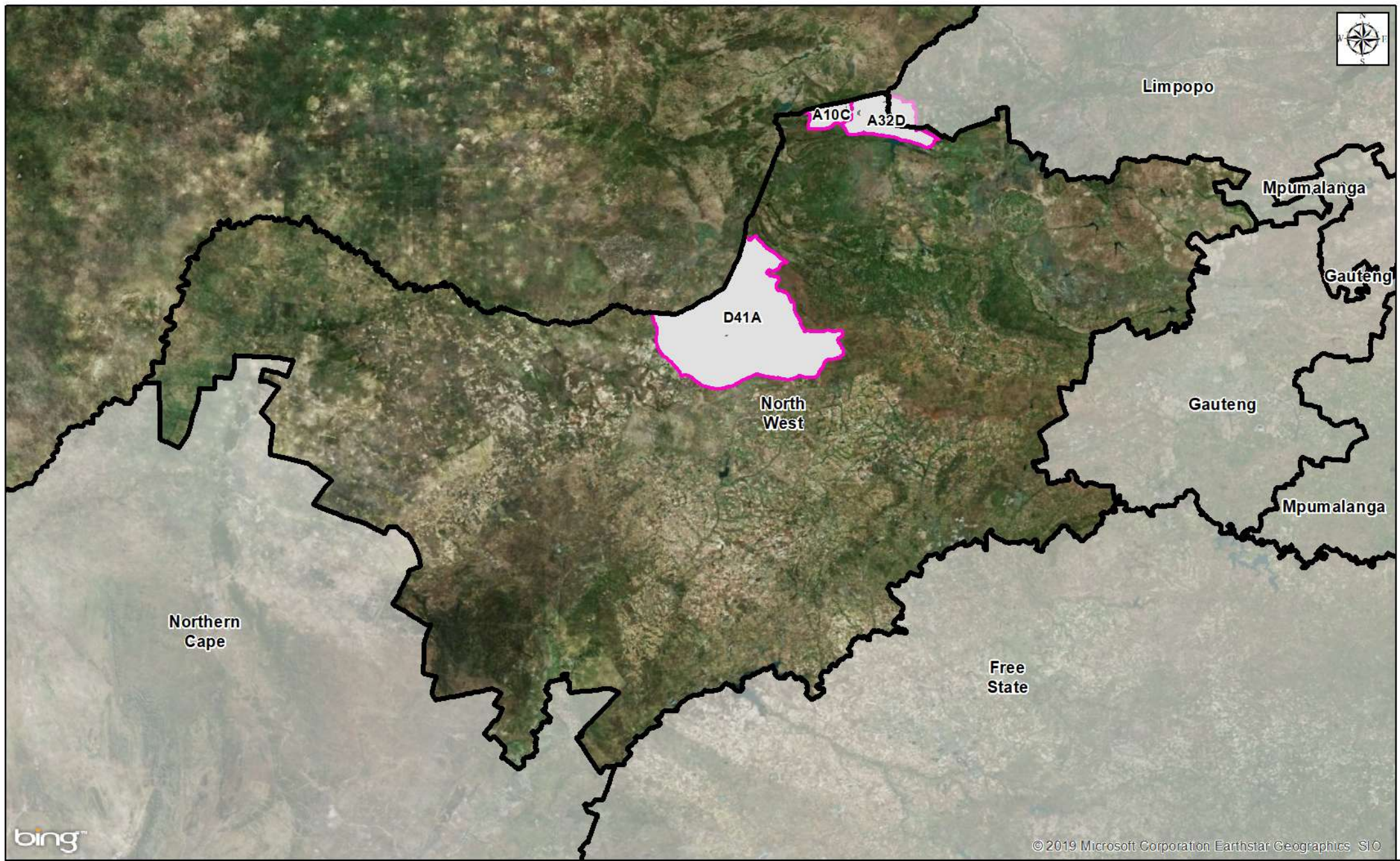


Appendix C

MAPS



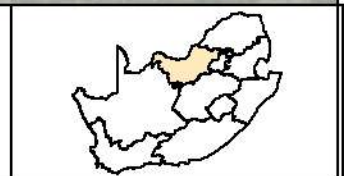
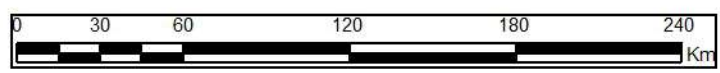
bing™

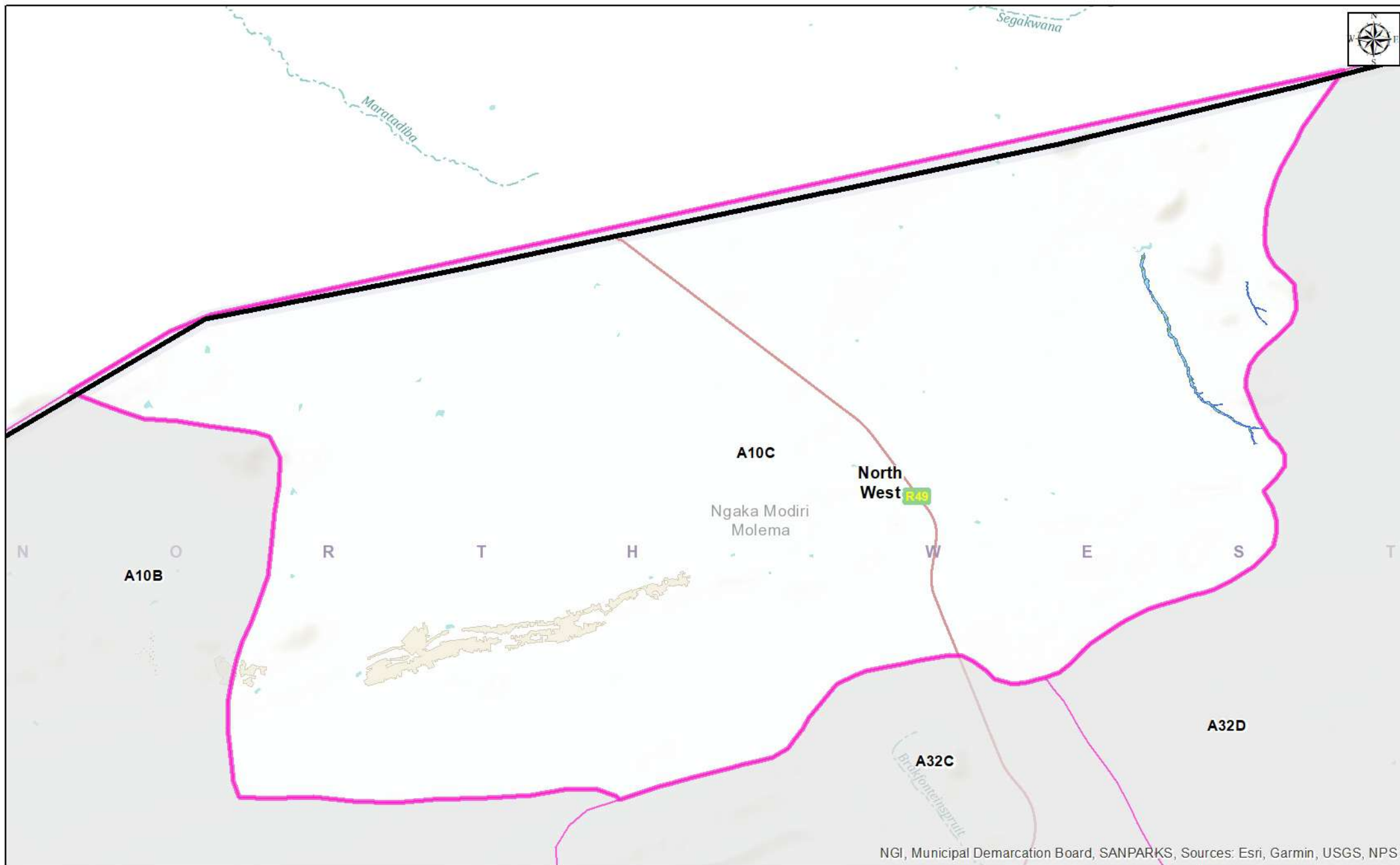
© 2019 Microsoft Corporation Earthstar Geographics, SIO

Legend

- Provincial Boundaries
- Quaternary Boundaries

North West



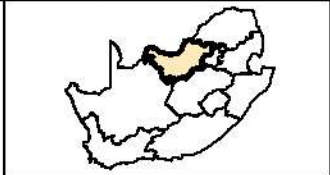


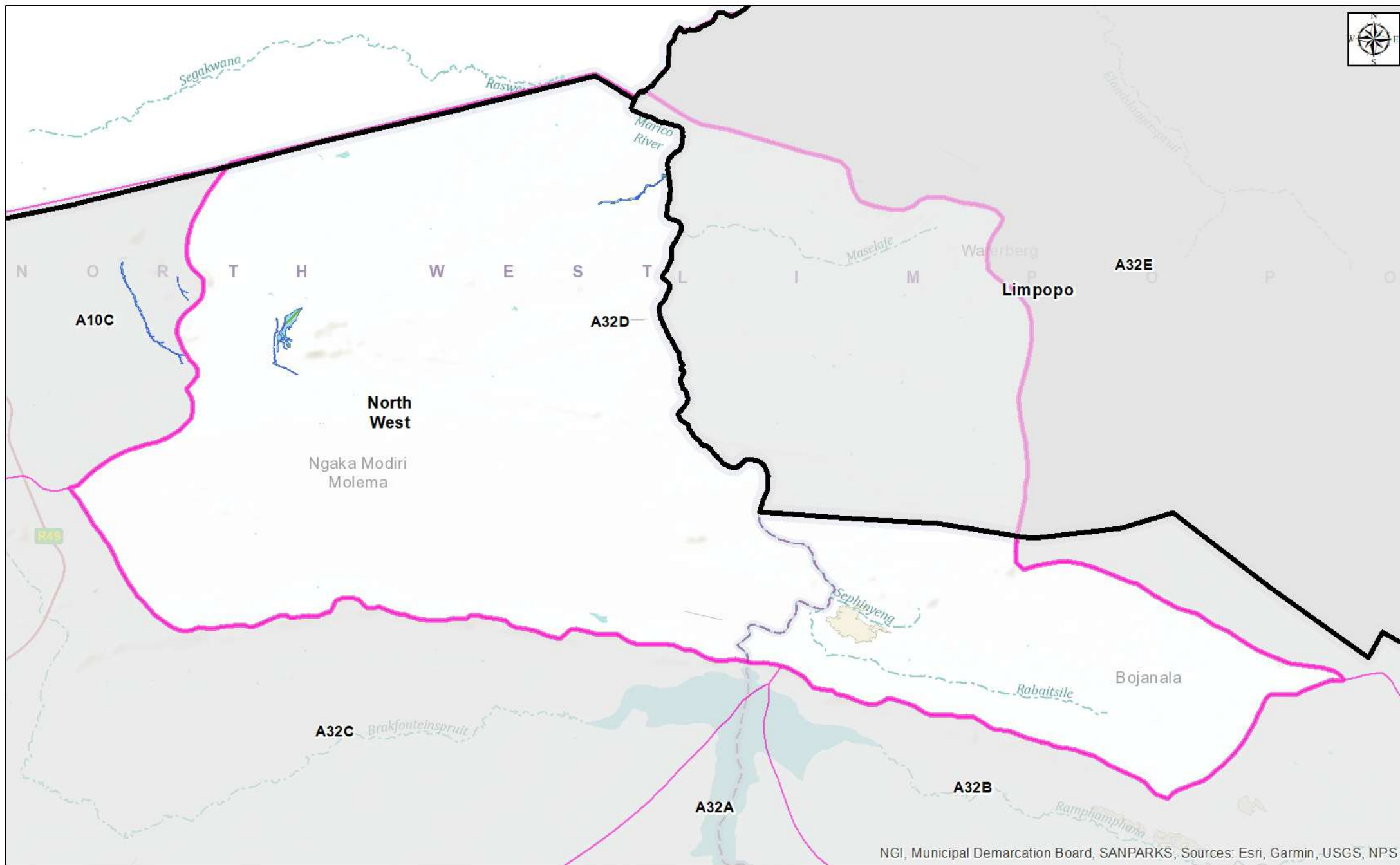
NGI, Municipal Demarcation Board, SANPARKS, Sources: Esri, Garmin, USGS, NPS

Legend

- Wetland Boundaries
- Relevant Quaternary

North West - A10C



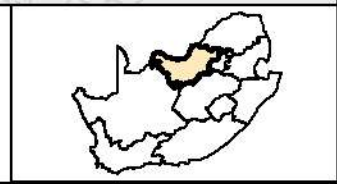
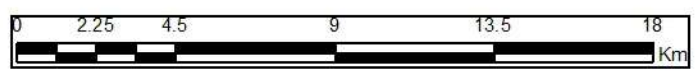


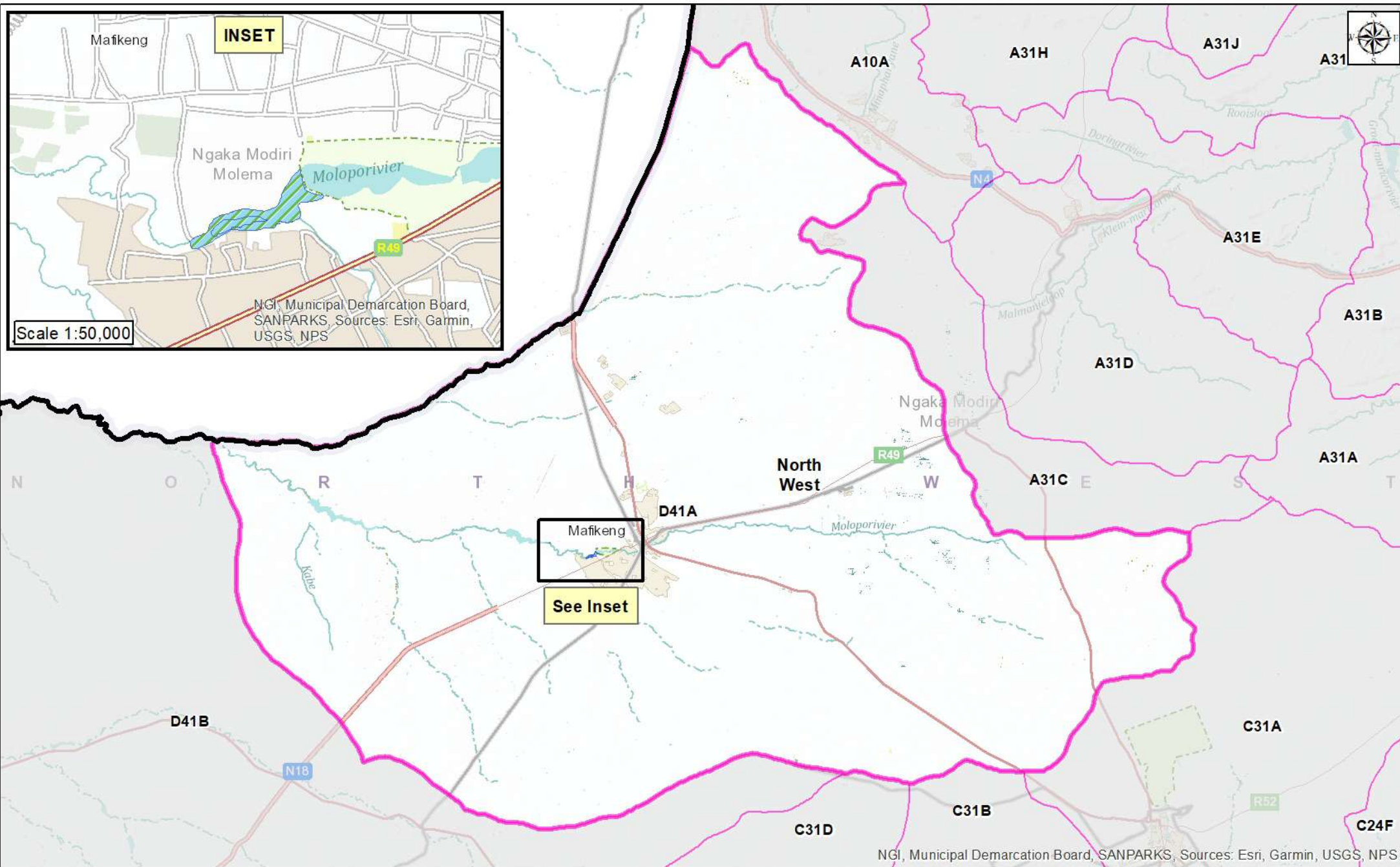
NGI, Municipal Demarcation Board, SANPARKS, Sources: Esri, Garmin, USGS, NPS

Legend

-  Wetland Boundaries
-  Relevant Quaternary

North West - A32D





Scale 1:50,000

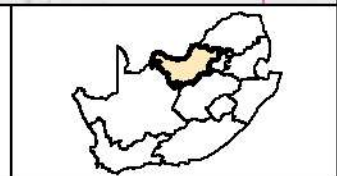
NGI, Municipal Demarcation Board, SANPARKS, Sources: Esri, Garmin, USGS, NPS

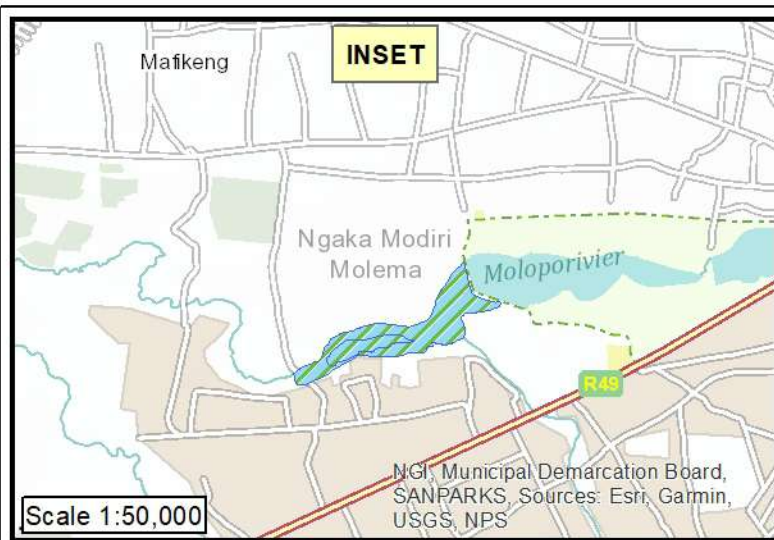
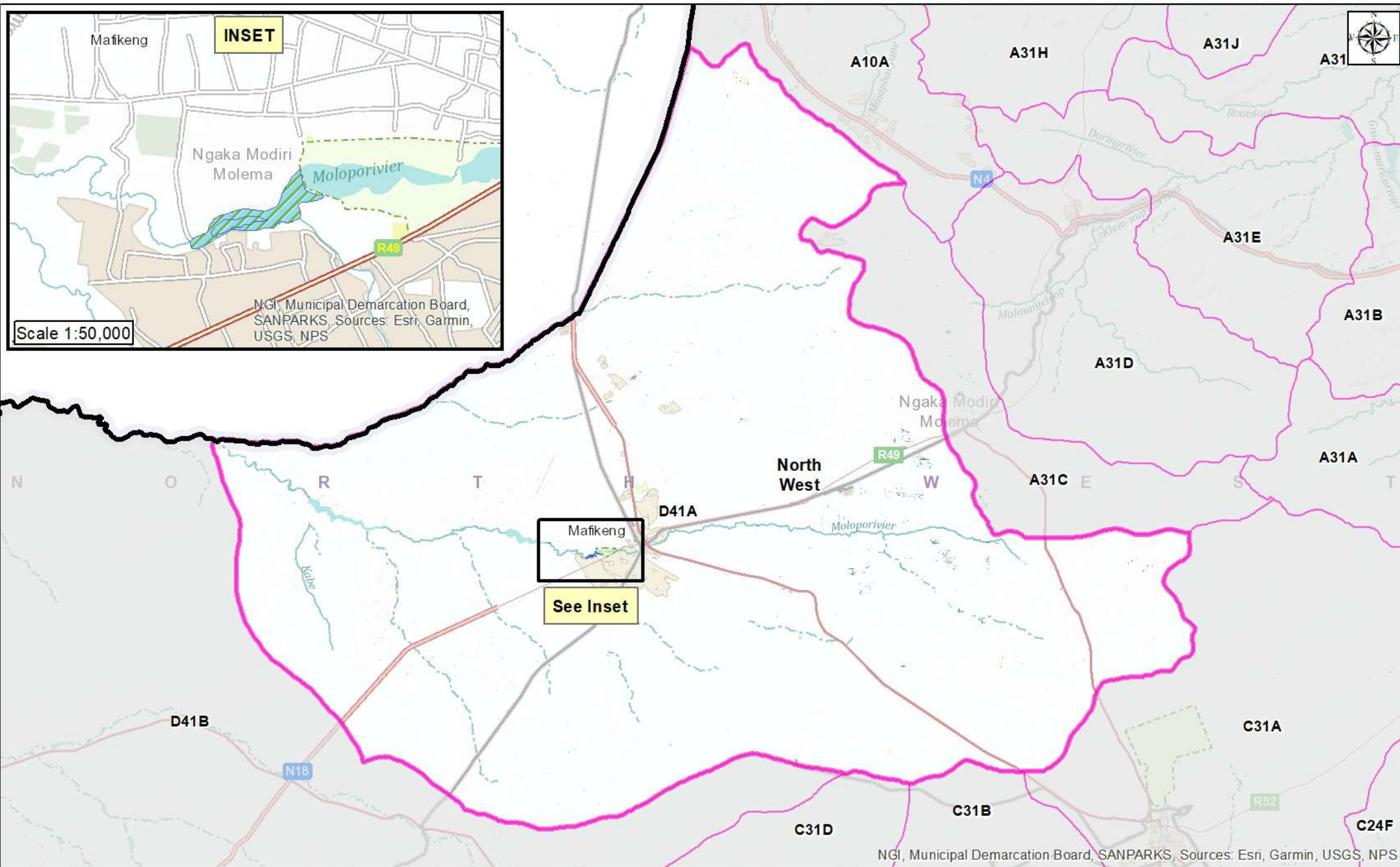
NGI, Municipal Demarcation Board, SANPARKS, Sources: Esri, Garmin, USGS, NPS

Legend

-  Wetland Boundaries
-  Relevant Quaternary

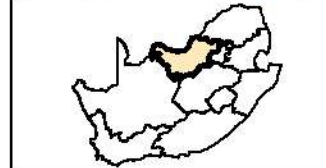
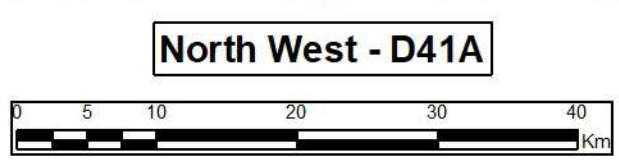
North West - D41A

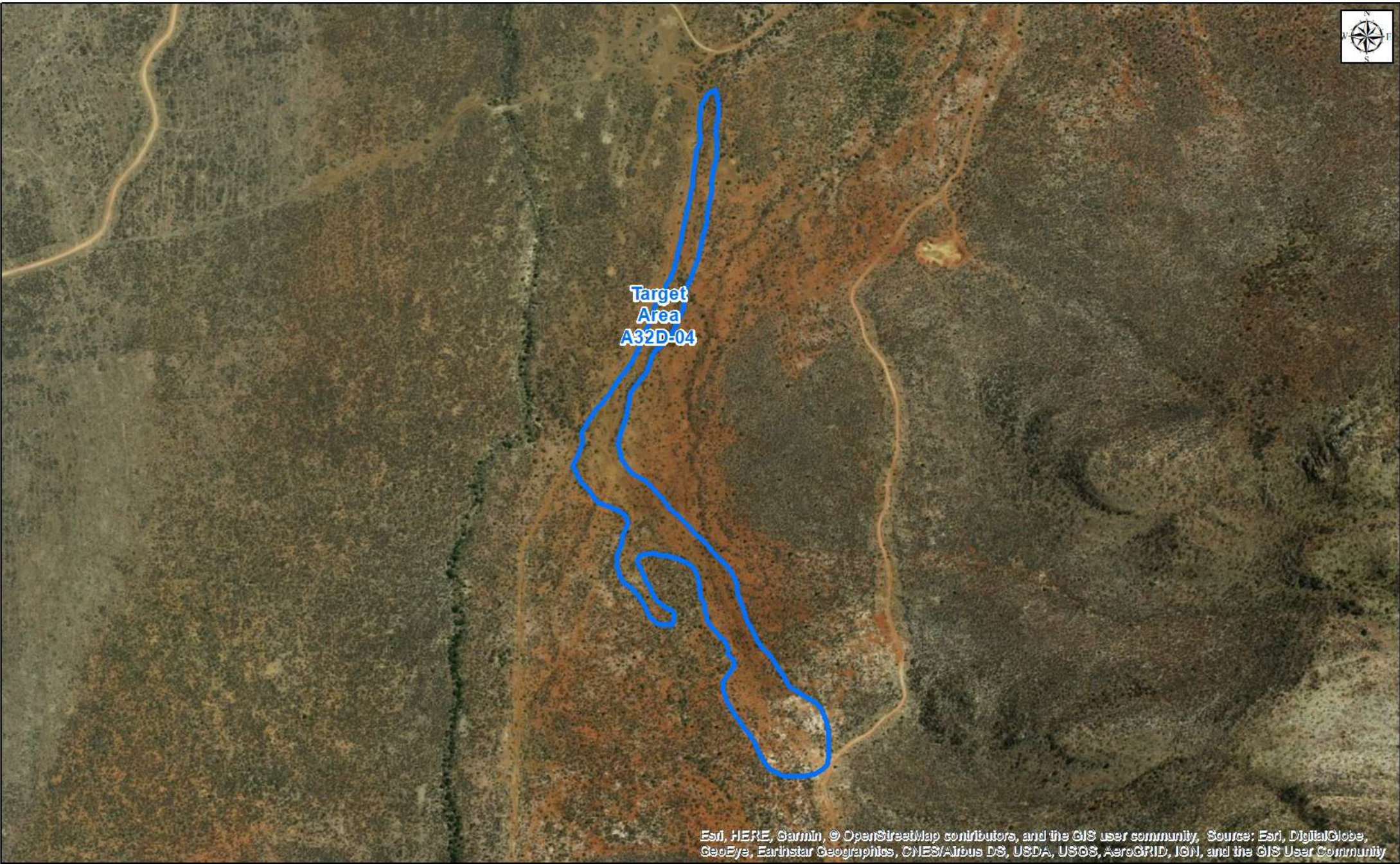




Legend

- Wetland Boundaries
- Relevant Quaternary



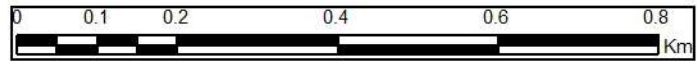


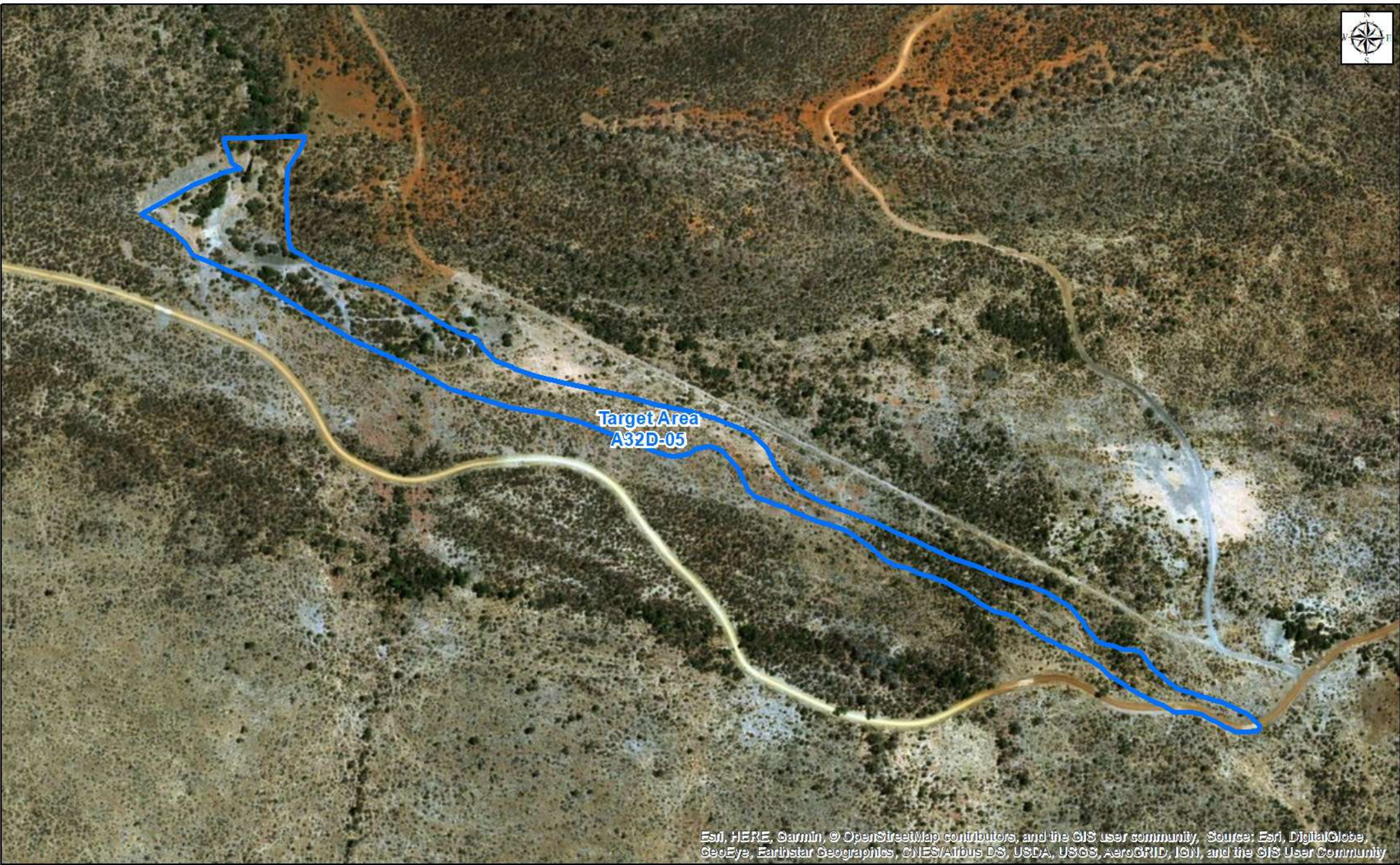
Esri, HERE, Garmin, © OpenStreetMap contributors, and the GIS user community, Source: Esri, DigitalGlobe, GeoEye, Earthstar Geographics, CNES/Airbus DS, USDA, USGS, AeroGRID, IGN, and the GIS User Community

Legend

-  Wetland Boundary
-  Relevant Quaternary

North West Target Area A32D-04





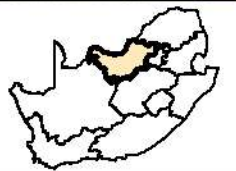
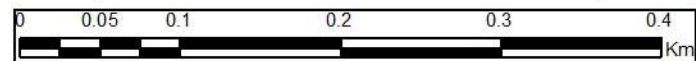
Target Area
A32D-05

Esri, HERE, Garmin, © OpenStreetMap contributors, and the GIS user community, Source: Esri, DigitalGlobe, GeoEye, Earthstar Geographics, CNES/Airbus DS, USDA, USGS, AeroGRID, IGN, and the GIS User Community

Legend

-  Wetland Boundary
-  Relevant Quaternary

North West Target Area A32D-05



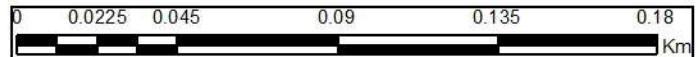


Esri, HERE, Garmin, © OpenStreetMap contributors, and the GIS user community, Source: Esri, DigitalGlobe, GeoEye, Earthstar Geographics, CNES/Airbus DS, USDA, USGS, AeroGRID, IGN, and the GIS User Community

Legend

-  Wetland Boundary
-  Relevant Quaternary

North West Target Area A32D-06





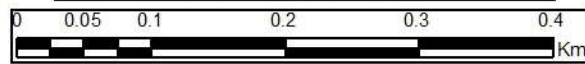
Target Area
A32D-07

Esri, HERE, Garmin, © OpenStreetMap contributors, and the GIS user community, Source: Esri, DigitalGlobe, GeoEye, Earthstar Geographics, CNES/Airbus DS, USDA, USGS, AeroGRID, IGN, and the GIS User Community

Legend

-  Wetland Boundary
-  Relevant Quaternary

North West Target Area A32D-07





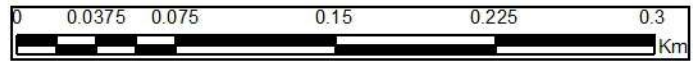
Target
Area
A32D-08

Esri, HERE, Garmin, © OpenStreetMap contributors, and the GIS user community, Source: Esri, DigitalGlobe, GeoEye, Earthstar Geographics, CNES/Airbus DS, USDA, USGS, AeroGRID, IGN, and the GIS User Community

Legend

-  Wetland Boundary
-  Relevant Quaternary

North West Target Area A32D-08





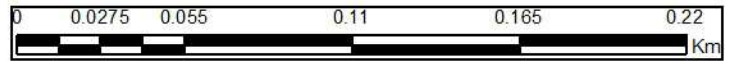
Target Area
D41A-03

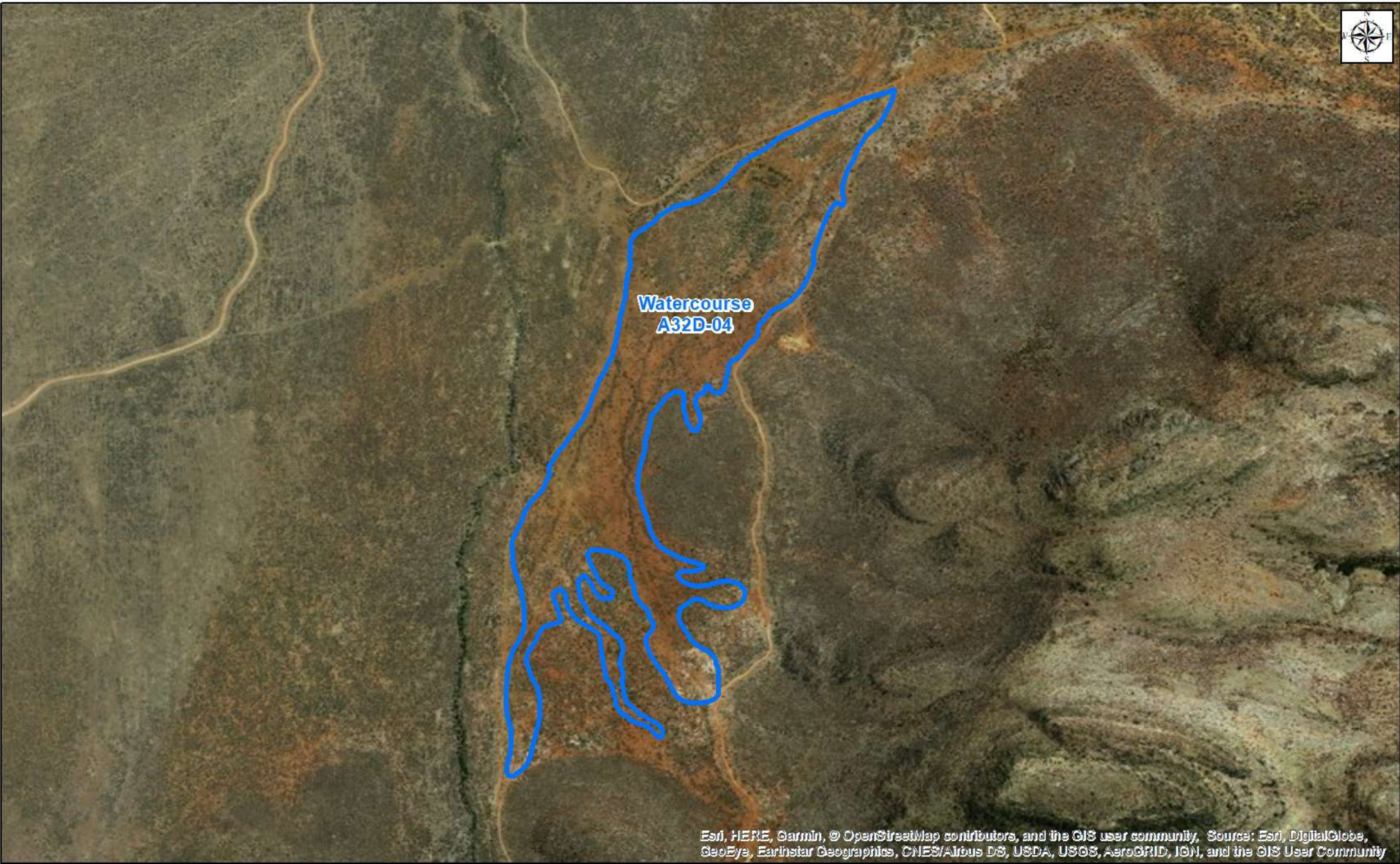
Esri, HERE, Garmin, © OpenStreetMap contributors, and the GIS user community, Source: Esri, DigitalGlobe, GeoEye, Earthstar Geographics, CNES/Airbus DS, USDA, USGS, AeroGRID, IGN, and the GIS User Community

Legend

-  Wetland Boundary
-  Relevant Quaternary

North West Target Area D41A-03





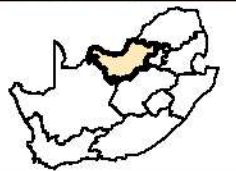
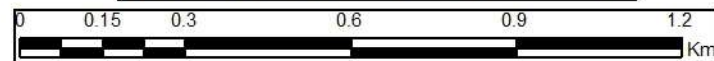
Watercourse
A32D-04

Esri, HERE, Garmin, © OpenStreetMap contributors, and the GIS user community, Source: Esri, DigitalGlobe, GeoEye, Earthstar Geographics, CNES/Airbus DS, USDA, USGS, AeroGRID, IGN, and the GIS User Community

Legend

-  Wetland Boundary
-  Relevant Quaternary

North West Watercourse A32D-04





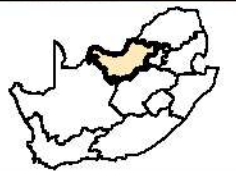
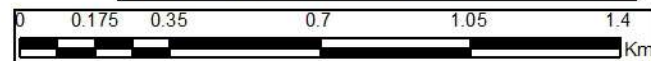
**Watercourse
A32D-05**

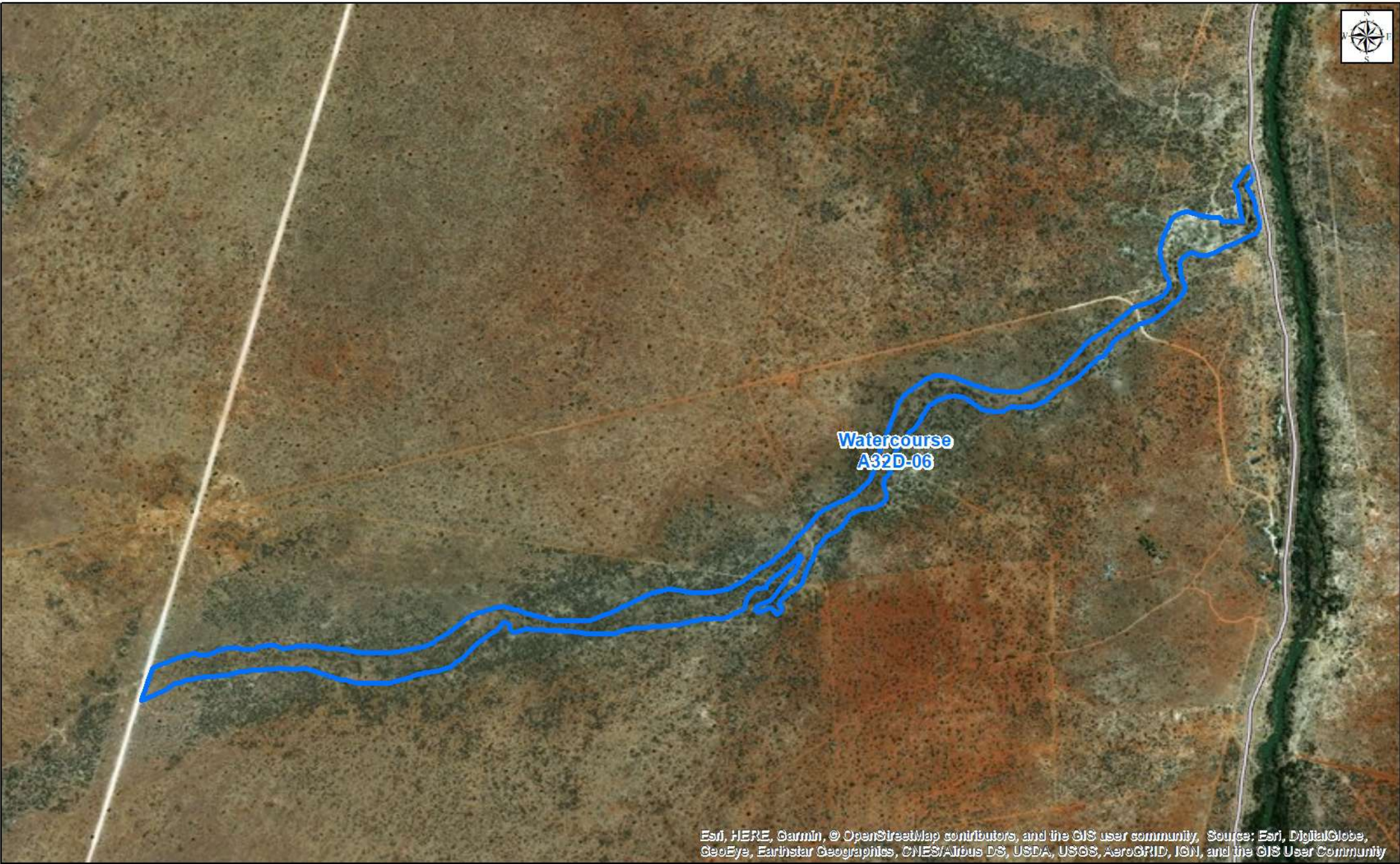
Esri, HERE, Garmin, © OpenStreetMap contributors, and the GIS user community, Source: Esri, DigitalGlobe, GeoEye, Earthstar Geographics, CNES/Airbus DS, USDA, USGS, AeroGRID, IGN, and the GIS User Community

Legend

-  Wetland Boundary
-  Relevant Quaternary

North West Watercourse A32D-05






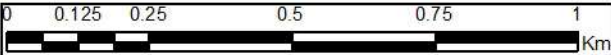
Watercourse
A32D-06

Esri, HERE, Garmin, © OpenStreetMap contributors, and the GIS user community, Source: Esri, DigitalGlobe, GeoEye, Earthstar Geographics, CNES/Airbus DS, USDA, USGS, AeroGRID, IGN, and the GIS User Community

Legend

-  Wetland Boundary
-  Relevant Quaternary

North West Watercourse A32D-06



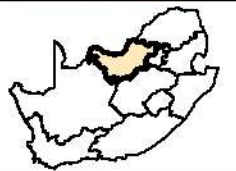
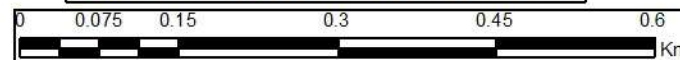


Esri, HERE, Garmin, © OpenStreetMap contributors, and the GIS user community, Source: Esri, DigitalGlobe, GeoEye, Earthstar Geographics, CNES/Airbus DS, USDA, USGS, AeroGRID, IGN, and the GIS User Community

Legend

-  Wetland Boundary
-  Relevant Quaternary

North West Watercourse A32D-07





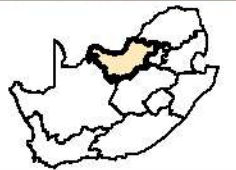
**Watercourse
A32D-08**

Esri, HERE, Garmin, © OpenStreetMap contributors, and the GIS user community, Source: Esri, DigitalGlobe, GeoEye, Earthstar Geographics, CNES/Airbus DS, USDA, USGS, AeroGRID, IGN, and the GIS User Community

Legend

-  Wetland Boundary
-  Relevant Quaternary

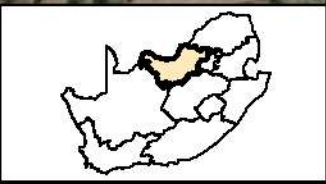
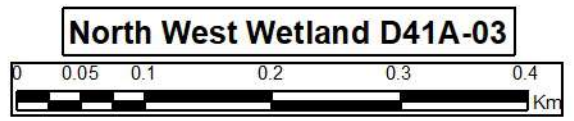
North West Watercourse A32D-08





Legend

-  Wetland Boundary
-  Relevant Quaternary





Target Area
A32D-04

Protected Areas

- Forest Nature Reserve
- Forest Wilderness Area
- Marine Protected Area
- Mountain Catchment Area
- National Park
- Nature Reserve
- Protected Environment
- Special Nature Reserve
- World Heritage Site

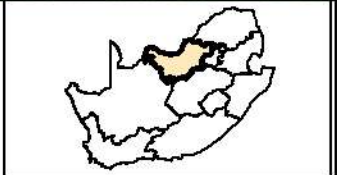
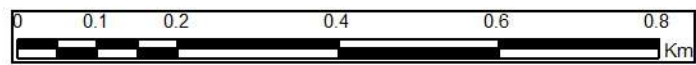
bing™

© 2019 Microsoft Corporation © 2019 DigitalGlobe © CNES (2019) Distribution Airbus DS

Critical Biodiversity Areas

CBA1	Degraded	ESA2
CBA2	ESA1	Protected
	Other	

North West Target Area A32D-04





Target Area A32D-05

Protected Areas

- Forest Nature Reserve
- Forest Wilderness Area
- Marine Protected Area
- Mountain Catchment Area
- National Park
- Nature Reserve
- Protected Environment
- Special Nature Reserve
- World Heritage Site

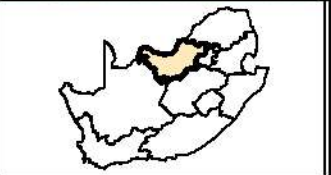
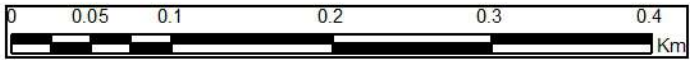
bing™

© 2019 Microsoft Corporation © 2019 DigitalGlobe © CNES (2019) Distribution Airbus DS

Critical Biodiversity Areas

CBA1	Degraded	ESA2
CBA2	ESA1	Protected
	Other	

North West Target Area A32D-05





Target Area
A32D-06

Protected Areas

- Forest Nature Reserve
- Forest Wilderness Area
- Marine Protected Area
- Mountain Catchment Area
- National Park
- Nature Reserve
- Protected Environment
- Special Nature Reserve
- World Heritage Site

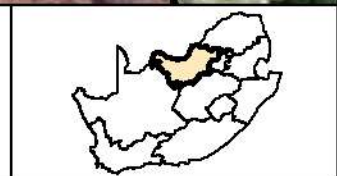
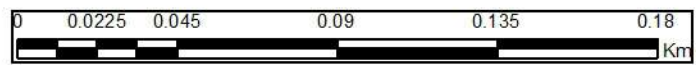
bing™

© 2019 Microsoft Corporation © 2019 DigitalGlobe © CNES (2019) Distribution Airbus DS

Critical Biodiversity Areas

 CBA1	 Degraded	 ESA2
 CBA2	 ESA1	 Protected
		 Other

North West Target Area A32D-06





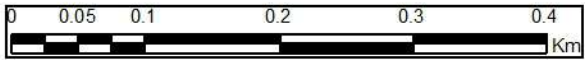
bing™

© 2019 Microsoft Corporation © 2019 DigitalGlobe © CNES (2019) Distribution Airbus DS

Critical Biodiversity Areas

CBA1	Degraded	ESA2
CBA2	ESA1	Protected
	Other	

North West Target Area A32D-07



Protected Areas

- Forest Nature Reserve
- Forest Wilderness Area
- Marine Protected Area
- Mountain Catchment Area
- National Park
- Nature Reserve
- Protected Environment
- Special Nature Reserve
- World Heritage Site





Protected Areas

- Forest Nature Reserve
- Forest Wilderness Area
- Marine Protected Area
- Mountain Catchment Area
- National Park
- Nature Reserve
- Protected Environment
- Special Nature Reserve
- World Heritage Site

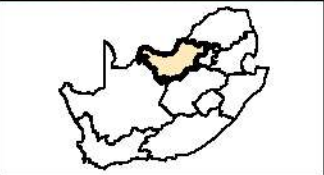
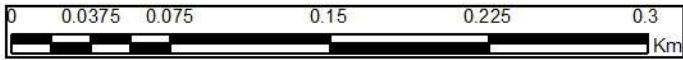
bing™

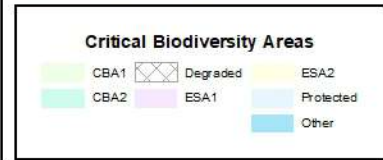
© 2019 Microsoft Corporation © 2019 DigitalGlobe © CNES (2019) Distribution Airbus DS

Critical Biodiversity Areas

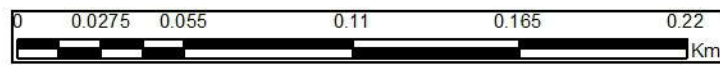
CBA1	Degraded	ESA2
CBA2	ESA1	Protected
	Other	

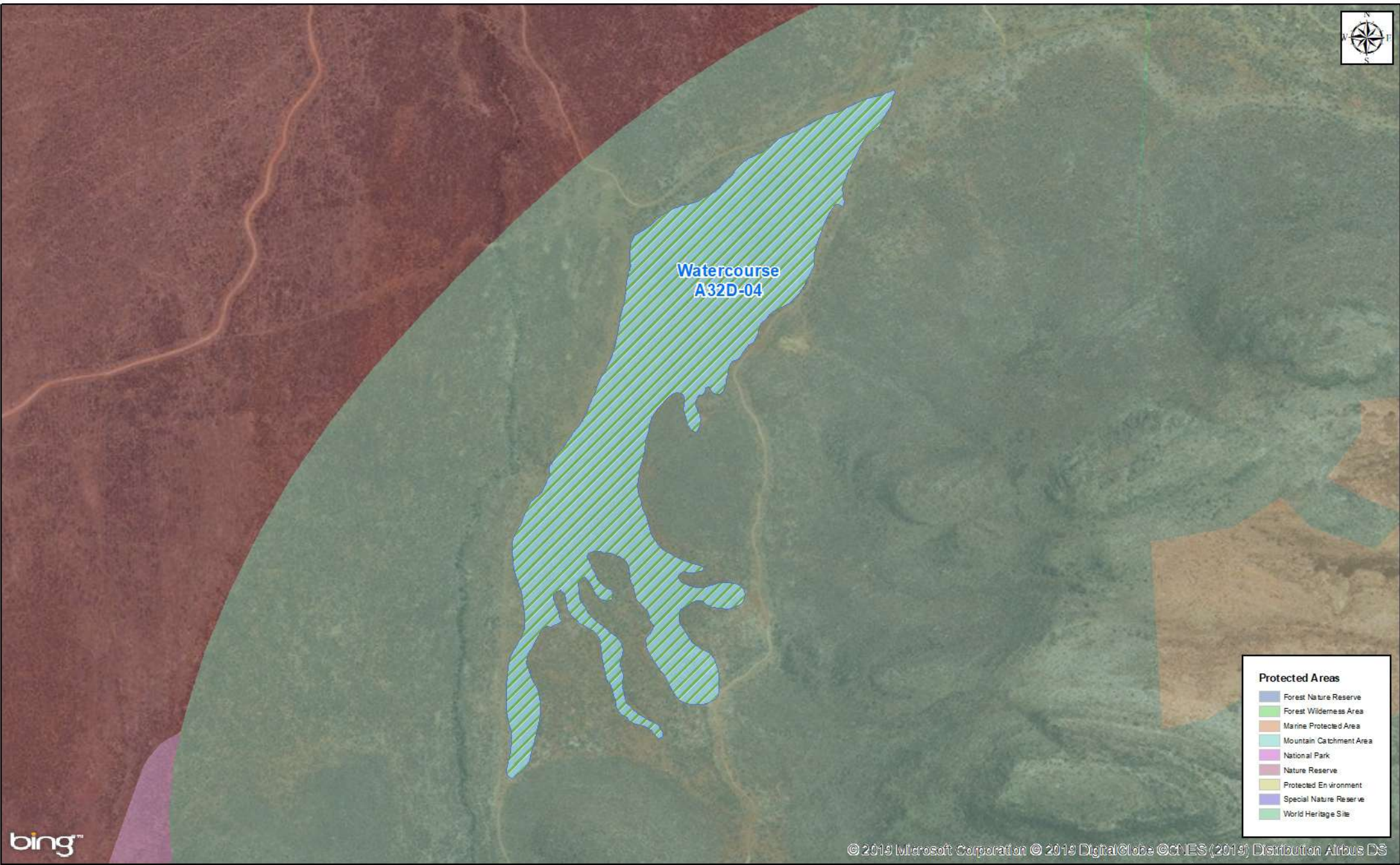
North West Target Area A32D-08





North West Target Area D41A-03





Watercourse
A32D-04

Protected Areas

- Forest Nature Reserve
- Forest Wilderness Area
- Marine Protected Area
- Mountain Catchment Area
- National Park
- Nature Reserve
- Protected Environment
- Special Nature Reserve
- World Heritage Site

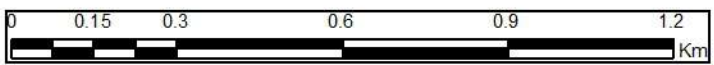
bing™

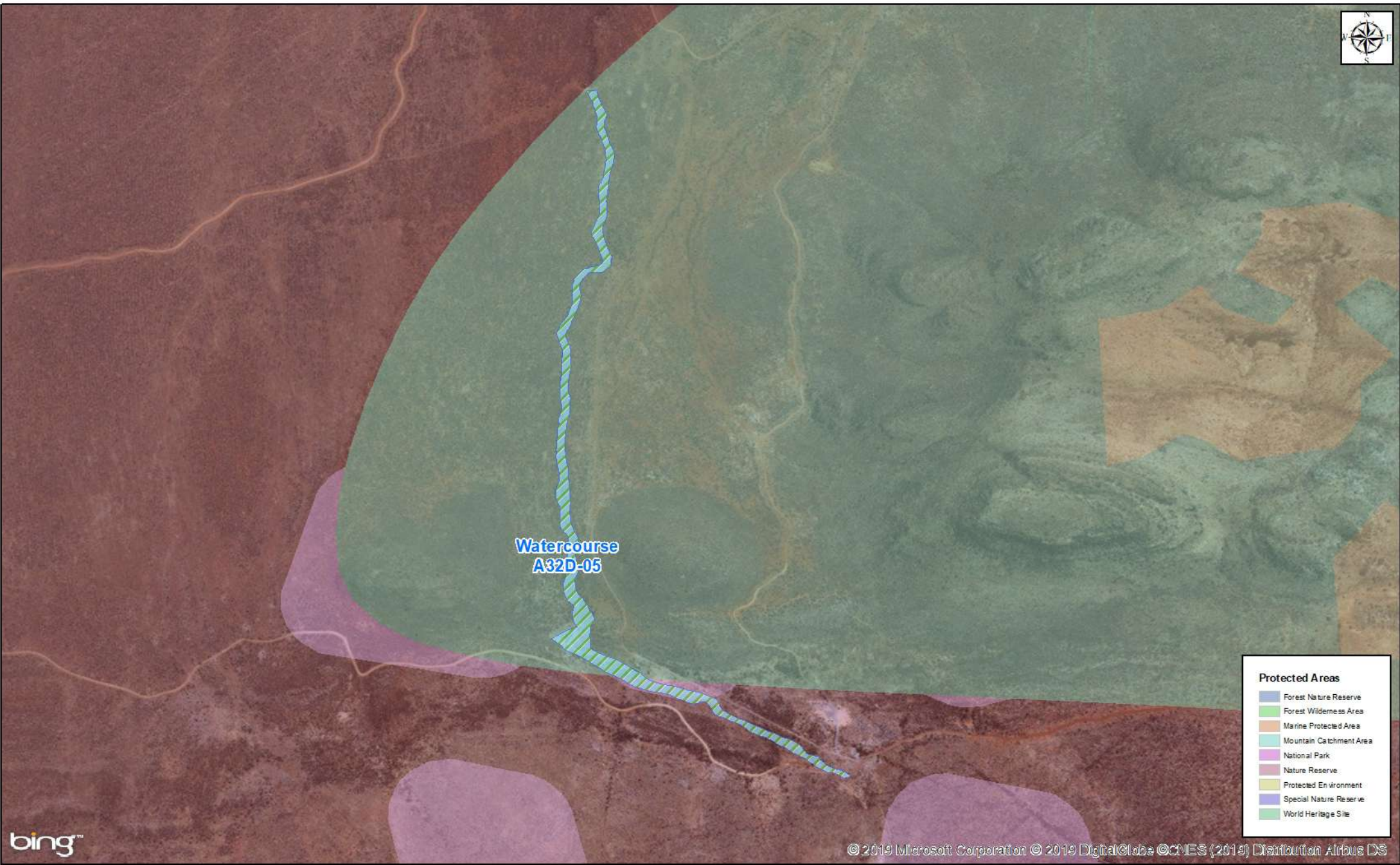
© 2019 Microsoft Corporation © 2019 DigitalGlobe © CNES (2019) Distribution Airbus DS

Critical Biodiversity Areas

CBA1	Degraded	ESA2
CBA2	ESA1	Protected
		Other

North West Watercourse A32D-04





Watercourse
A32D-05

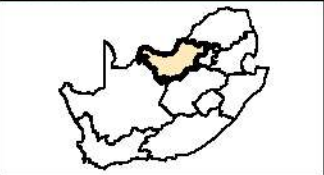
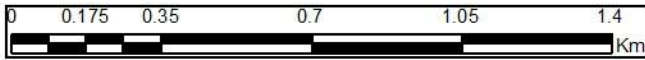
- Protected Areas**
- Forest Nature Reserve
 - Forest Wilderness Area
 - Marine Protected Area
 - Mountain Catchment Area
 - National Park
 - Nature Reserve
 - Protected Environment
 - Special Nature Reserve
 - World Heritage Site

bing™

© 2019 Microsoft Corporation © 2019 DigitalGlobe © CNES (2019) Distribution Airbus DS

- Critical Biodiversity Areas**
- CBA1
 - CBA2
 - Degraded
 - ESA1
 - ESA2
 - Protected
 - Other

North West Watercourse A32D-05





Watercourse
A32D-06

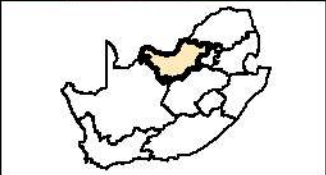
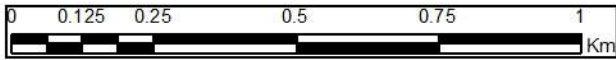
Protected Areas

- Forest Nature Reserve
- Forest Wilderness Area
- Marine Protected Area
- Mountain Catchment Area
- National Park
- Nature Reserve
- Protected Environment
- Special Nature Reserve
- World Heritage Site

Critical Biodiversity Areas

 CBA1	 Degraded	 ESA2
 CBA2	 ESA1	 Protected
		 Other

North West Watercourse A32D-06



bing™

© 2019 Microsoft Corporation © 2019 DigitalGlobe © CNES (2019) Distribution Airbus DS



Watercourse
A32D-07

Protected Areas

- Forest Nature Reserve
- Forest Wilderness Area
- Marine Protected Area
- Mountain Catchment Area
- National Park
- Nature Reserve
- Protected Environment
- Special Nature Reserve
- World Heritage Site

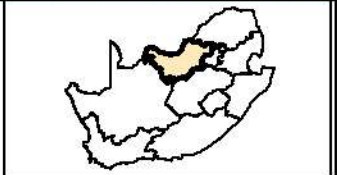
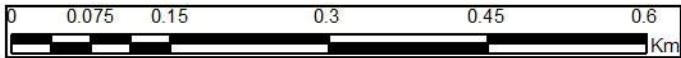
bing™

© 2019 Microsoft Corporation © 2019 DigitalGlobe © CNES (2019) Distribution Airbus DS

Critical Biodiversity Areas

CBA1	Degraded	ESA2
CBA2	ESA1	Protected
		Other

North West Watercourse A32D-07





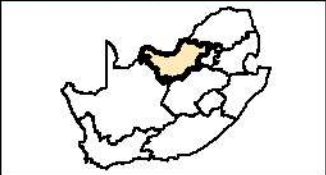
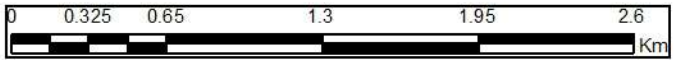
Protected Areas

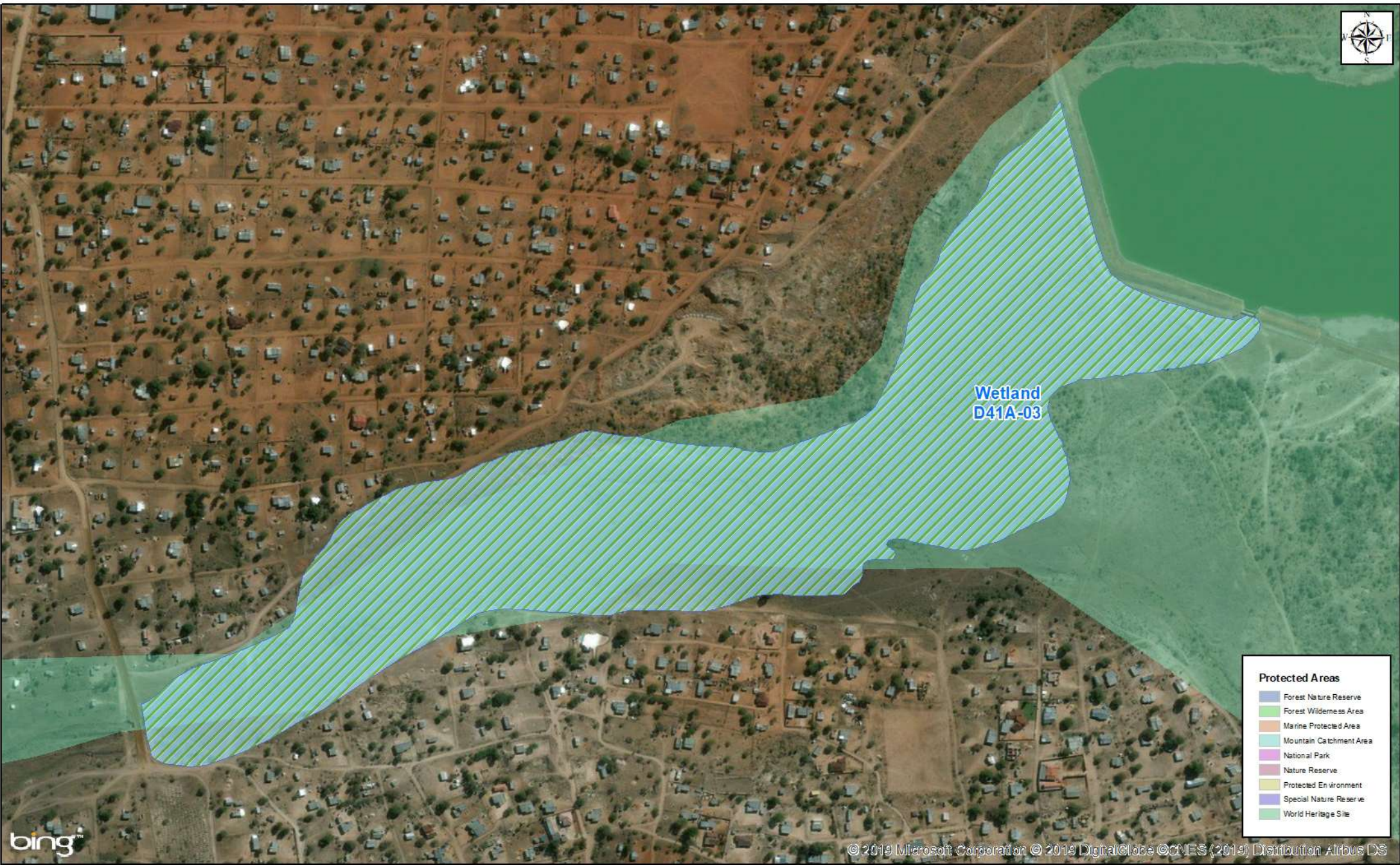
- Forest Nature Reserve
- Forest Wilderness Area
- Marine Protected Area
- Mountain Catchment Area
- National Park
- Nature Reserve
- Protected Environment
- Special Nature Reserve
- World Heritage Site

Critical Biodiversity Areas

CBA1	Degraded	ESA2
CBA2	ESA1	Protected
		Other

North West Watercourse A32D-08





North West Wetland D41A-03

