



**WOLF OVERHEAD POWERLINE NEAR
WOLWEFONTEIN, EASTERN CAPE
(DFFE Ref No.: 14/12/16/3/3/2/599/2)
ENVIRONMENTAL MANAGEMENT
PROGRAMME**

Wolf Wind Farm (RF) (Pty) Ltd

Submission date: 2022/03/25

Document number: 1001792

Revision: 5

Document control record

Document prepared by:

Zutari (Pty) Ltd
Reg No 1977/003711/07
Suite 201
2nd Floor
Bloemhof Building
65 York Street
George
South Africa
PO Box 509
George
6530
Docex: DX42

T +27 44 874 2165
F +27 44 873 5843
E george@zutari.com

Document Control						
Project name		WOLF WIND FARM NEAR WOLWEFONTEIN, EASTERN CAPE (DFFE Ref No.: 14/12/16/3/3/2/599/1): ENVIRONMENTAL MANAGEMENT PROGRAMME				
Document number		Project number		1001792		
Owner		Wolf Wind Farm (RF) (Pty) Ltd				
Owner contact		Magdalena Logan	Owner reference		m.logan@redrocket.energy	
Rev	Date	Revision details/status	Author	Reviewer	Verifier (if required)	Approver
1-3	June – December 2015	Original draft EMPr	Dirk Pretorius	Corlie Steyn	Patrick Killick	Andries van der Merwe
4	December 2021	Split draft EMPR into WEF and OHPL EMPS.	Genie de Waal	Patrick Killick	Patrick Killick	Patrick Killick
5	25 March 2022	Draft Final EMPr	Patrick Killick	Genie de Waal	Patrick Killick	Patrick Killick
Current revision		5				

Approval			
Author signature		Approver signature	
Name	Patrick Killick	Name	Charles Norman
Title	Senior consultant	Title	Senior Consultant

All rights reserved | The information contained herein is confidential and proprietary to Zutari and/or its business partners. It may include personal information of data subjects connected to Zutari and/or our business purpose. To safeguard the information and the competitive position of information owners, the content hereof shall not be used, disclosed, or otherwise processed for any purpose other than the purpose for which it was developed. Users can only rely on the accuracy of the final version of the Report. Processing and disclosure of information is subject to our [Privacy Notice](#) and users indemnify Zutari against the consequences of unauthorised use or disclosure. Any concerns may be addressed to the [Zutari Information Officer](#).

Table of Contents

1	INTRODUCTION TO MICROSITING AND LAYOUT EMPR FINALISATION	4
1.1	Summary of the project walkthrough and micrositing.....	7
2	CONCLUSION.....	12
	ANNEXURE A CURRICULUM VITAE OF ENVIRONMENTAL ASSESSMENT PRACTITIONERS.....	14
	ANNEXURE B ENVIRONMENTAL AUTHORISATIONS AND AMENDMENTS	15
	ANNEXURE B.1 Original EA (2015-09-14) 14/12/16/3/3/2/599	16
	ANNEXURE B.2 EA AM1 (2016-11-17) 14/12/16/3/3/2/599/AM1	17
	ANNEXURE B.3 EA AM3 (2017-09-14) 14/12/16/3/3/2/599/AM3	18
	ANNEXURE B.4 EA AM4 (2018-11-26) 14/12/16/3/3/2/599/AM4	19
	ANNEXURE B.5 EA AM5 (2020-09-22 14/12/16/3/3/2/599/AM5	20
	ANNEXURE B.6 EA AM6 (2022-02-02) 14/12/16/3/3/2/599/1/AM6	21
	ANNEXURE C APPROVED PUBLIC PARTICPATION PLAN	22
	ANNEXURE D SPECIALIST REPORTS INFORMING FINAL LAYOUT	23
	ANNEXURE D.1 Avifauna Micrositing Report.....	24
	ANNEXURE D.2 Terrestrial Ecology (Botanical and Fauna) Report	25
	ANNEXURE D.3 Freshwater Report	26
	ANNEXURE E SPECIALIST STATEMENT ON FINAL LAYOUT	27
	ANNEXURE E.1 Avifauna statement regarding the final layout.....	28
	ANNEXURE E.2 Terrestrial Ecology (Botanical and Fauna) statement regarding the final layout.....	29
	ANNEXURE E.3 Freshwater statement regarding the final layout	30
	ANNEXURE F GENERIC EMPR FOR THE DEVELOPMENT AND EXPANSION OF SUBSTATION INFRASTRUCTURE FOR THE TRANSMISSION AND DISTRIBUTION OF ELECTRICITY	31
	ANNEXURE G GENERIC EMPR FOR THE DEVELOPMENT AND EXPANSION FOR OVERHEAD ELECTRICITY TRANSMISSION AND DISTRIBUTION INFRASTRUCTURE	32

List of Tables

Table 1-2 Walkthrough and micrositing specialist reports	7
--	---

List of Figures

Figure 1-1 pre-walkthrough project layout	6
Figure 1-2 Final layout - key plan	8
Figure 1-3 Final layout - Map 1	9
Figure 1-4 Final layout - Map 2.....	10
Figure 1-5 Final layout - Map 3.....	11

1 Introduction to Micrositing and layout EMPR finalisation

This section provides the reader with the context and history for the project, including an overview of the various EA amendments and a description of approach used in producing this final EMPr and meeting the conditions set out in the EA.

The Applicant, Wolf Wind Farm (RF) (Pty) Ltd, has been authorised to construct a ≤90MW Wind Energy Facility (WEF) and Overhead Powerline (OHPL) referred to as the Wolf Wind Farm on the border of the Sundays River Valley Local Municipality and Ikwezi Local Municipality, situated approximately 5km north of Wolwefontein, 35km north-west of Kirkwood and 36km south-east of Jansenville, atop the Klein Winterhoek Mountain range in the Eastern Cape. A scoping and Environmental Impact Assessment process (S&EIA) was undertaken in accordance with the National Environmental Management Act (Act 107 of 1998) (NEMA) and the 2010 EIA Regulations. The project was authorised on the 14 September 2015 and has undergone several amendments. The most recent amendment split the Wind Farm and OHPL into separate EA's and this EMPr deals only with the OHPL. The original EA and all subsequent amendments are appended here in Annexure B. Figure 1-1 to follow provides the pre-walkthrough project layout.

On the 28th October 2021 the Minister of Mineral Resources and Energy, Mr Gwede Mantashe announced 25 Preferred Bidders selected under the Renewable Energy Independent Power Producer Procurement Programme (REIPPPP) Bid Window 5, of which the Wolf project was one. The Applicant is now required to fulfil various requirements to reach financial close and allow them, to enter into negotiations around a power purchase agreement and the construction of the project.

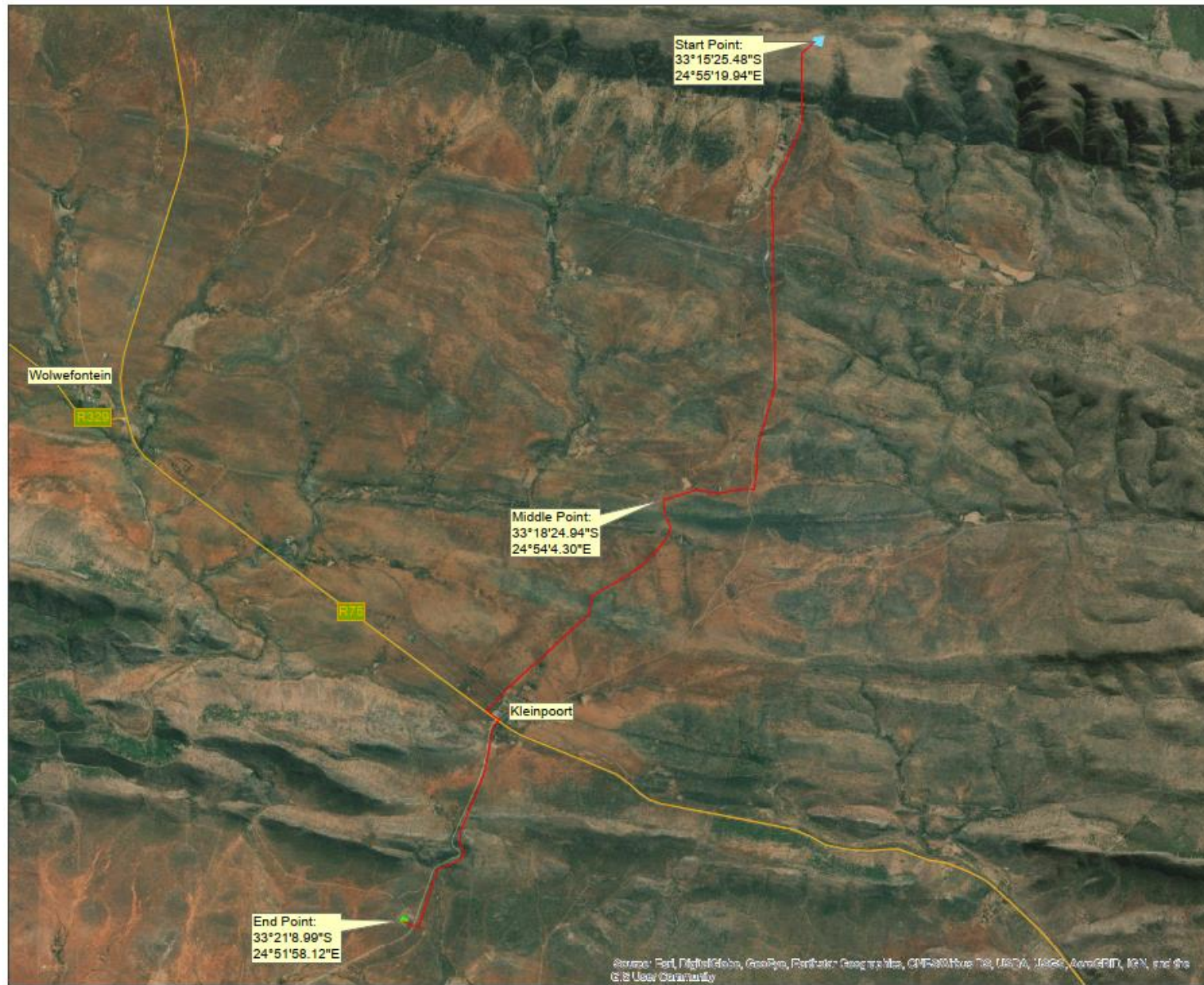
The draft Environmental Management Programme (EMPr) submitted together with final application for authorisation was not approved in the EA of June 2015. Condition 15 of the EA states that a final EMPr must be submitted the DFFE for approval prior to construction. The following additional requirements linked with this should also be completed as per of the process:

1. **Undertake a walkthrough and micrositing of the project layout** – a bird specialist Freshwater specialist and Botanical and Fauna specialist (Terrestrial Ecologist) must be commissioned to undertake a walkthrough and ground truth the pre-walkthrough OHPL and Shared Substation and make micrositing recommendations for the Applicant's consideration in the final Layout. The reports detailing their investigations and recommendation can be found in Annexure D.
2. **Develop the final layout plan** - following the walkthrough the Applicant revised the project layout with inputs from both technical and environmental teams. The layout to follow shows the location of the relevant project components. On completion of the final layout, these specialists were asked to review and approve the final layout and provide any additional mitigations measures that may be necessary. Their approvals can be found in statements presented in Annexure E. The final layouts for (a) shared substation and (b) OHPL is presented in the respective Generic EMPrs found in Annexure F and Annexure G.
3. **A sensitivity map** - all the relevant sensitivities areas and features identified by specialists in the original EIA and updated during the subsequent EA amendment process and also during the walkthrough and micrositing exercise are presented in the sensitivity maps provided in the Generic EMPr found in Annexure F and Annexure G.
4. **Updated Generic EMPr** – Government Notice 435 of 22 March 2019 (GN435/2019), all applications for environmental authorisation for substations and overhead electricity transmission and distribution infrastructure where listed activity 11 or 47 of listing notice 1 of 2014, as amended or activity 9 of Listing Notice 2 of 2014, as amended, together with any other listed or specified activities necessary for the

realisation of such facilities must use the generic Environmental Management Programme, contemplated in Regulations 19(4), 23(4) and Appendix 4 to the Environmental Impact Assessment Regulations, 2014, as amended. As these activities are within the similarly lists activities for the project, the Generic EMPr have be used. The draft Generic EMPr for the substation (See Annexure F) and transmission line infrastructure (See Annexure G) have been updated to reflect all changes arising from the above process. For ease of reference, new information, additions or changes draft generic EMPrs have been made in **red font** for ease of reference. The OHPL and a portion of the shared substation would be ceded to Eskom after construction. The Generic EMPr ensure that all Eskom infrastructure is managed under similar requirements / objectives.

It is important to note that the shared substation generic EMPr is identical to the shared substation generic EMPr which also appears in the Wolf WEF, and these will only begin to diverge once the construction is complete and the relevant portion of the substation is ceded to Eskom.

- 5. Public participation** – The ‘draft’ final EMPr and layout must be made available to the stakeholders for review and comment and a comments and responses report submitted with the final to DFFE. A Public Participation Plan has been submitted and approved by the DFFE and can be found in Annexure C.



ZUTARI
 IMPACT. ENGINEERED.



Legend

- 132kV Gridline Connection for the Wolf Wind Farm (±13km)
- Eskom Switching Station
- Existing Wolf Substation

Notes:
 Aerial Imagery: ESRI
 Eskom switching station less Wind Farm Substation.
 Date: 2021/11/17 Version: 0



Wolf OHPL Pre-walkthought project layout

Figure 1-1 | pre-walkthrough project layout

1.1 Summary of the project walkthrough and micrositings

In accordance with the conditions the EA the following specialists were commissioned to undertake and walkthrough, of the site project layout, ground truthing the layout and making recommendations regarding the final placement of the various components:

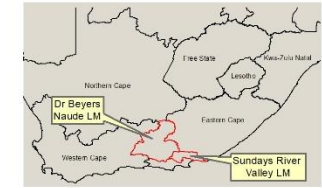
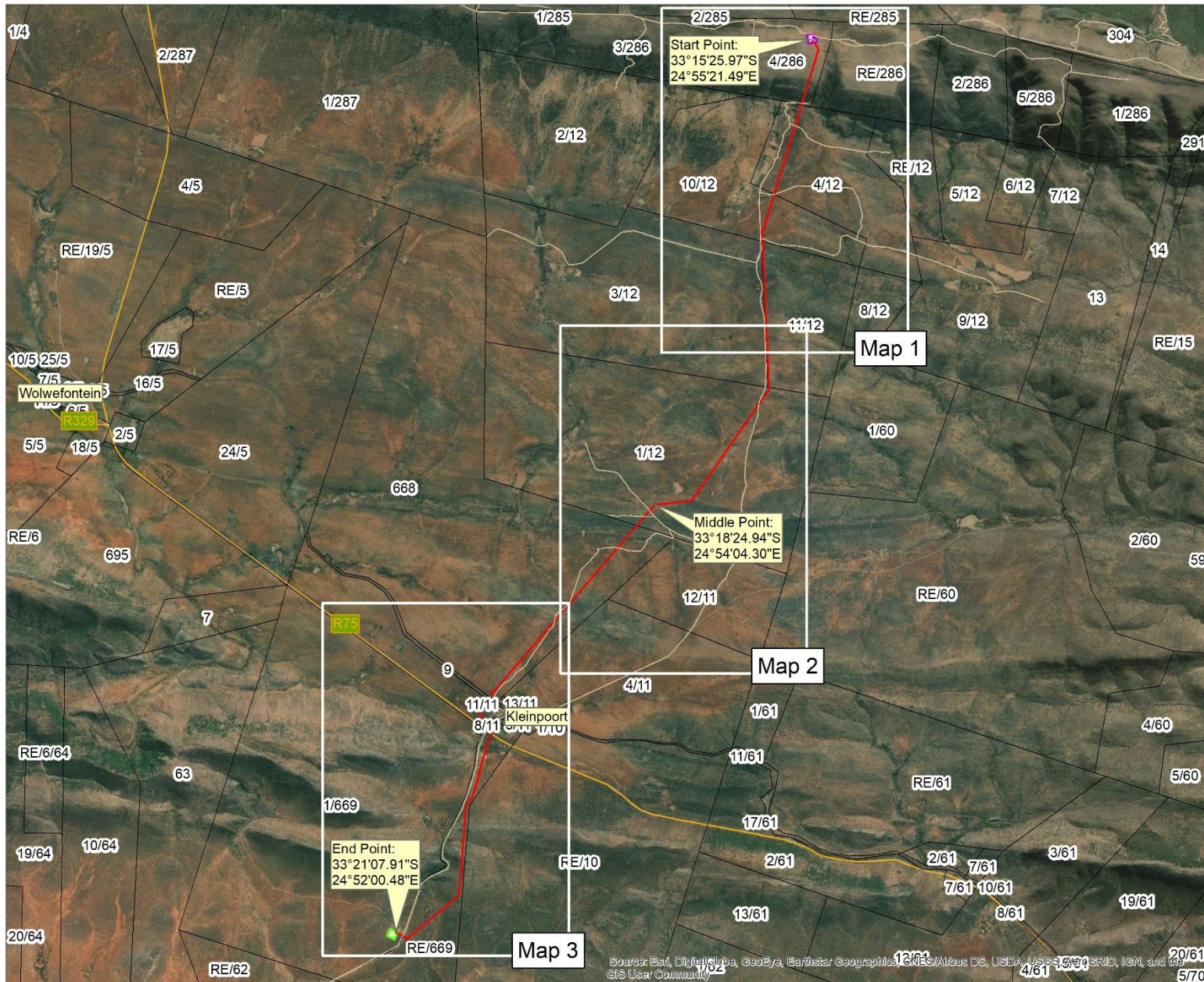
Table 1-1 | Walkthrough and micrositings specialist reports

Aspect	Specialist	Reference
Birds	Jon Smallie (Wildskies)	See Annexure E.1
Botanical and Fauna (Terrestrial ecology)	Dr Dave McDonald (Berg Wind Botanical Tours)	See Annexure E.2
Freshwater	R. Mathakutha (FEN Consulting (Pty) Ltd)	See Annexure E.3s

These specialists provided recommendations to the Applicant via the above reports to take under consideration while developing the final layout which best meets the environmental recommendations while remaining technically achievable and buildable and these layouts are provided in the Generic EMPr in Annexure F and Annexure G and in Figure 1-2 to Figure 1-5 to follow.

The final layouts were sent back to the relevant specialists for review and approval. They have provided a statement indicating their satisfaction with the final layout which can be found as follows, birds in Annexure E.1, terrestrial ecology in Annexure E.2 and freshwater in Annexure E.3.

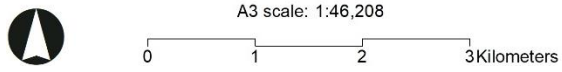
These final layouts and final generic EMPr will be made available for the public review and comment. And any comments and responses thereto will be submitted to DFFE for consideration is approving the layout and EMPr.



- Legend**
- 132kV Gridline Connection for the Wolf Wind Farm (±13km)
 - Wolf Shared Substation
 - Existing Wolf Substation
 - Existing Access Roads/Tracks

Notes:
Aerial Imagery: ESRI

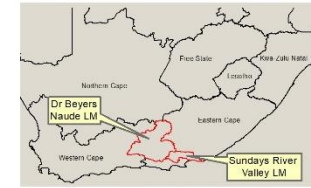
Date: 2022/03/23 Version: 0



Job No: 1001792 Map by: WL
Projection: WGS_1984_UTM_Zone_35S

**Wolf OHPL and Shared Substation
Layout Plan - Key**

Figure 1-2 | Final layout - key plan



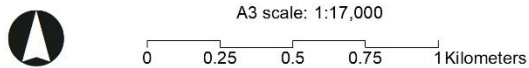
Legend

- 132kV Gridline Connection for the Wolf Wind Farm (±13km)
- Wolf Shared Substation
- Existing Access Roads/Tracks

Notes:
 Aerial Imagery: ESRI

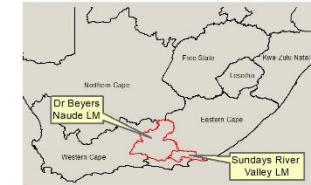
Date: 2022/03/23 Version: 0

**Wolf OHPL and Shared Substation
 Layout Plan - Map 1**



Job No: 1001792 Map by: WL
 Projection: WGS_1984_UTM_Zone_35S

Figure 1-3 | Final layout - Map 1



Legend

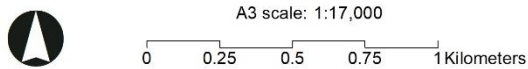
- 132kV Gridline Connection for the Wolf Wind Farm (±13km)
- Existing Access Roads/Tracks



Notes:
Aerial Imagery: ESRI

Date: 2022/03/23

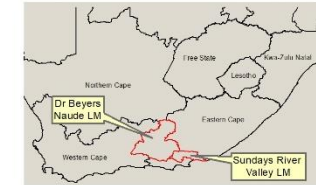
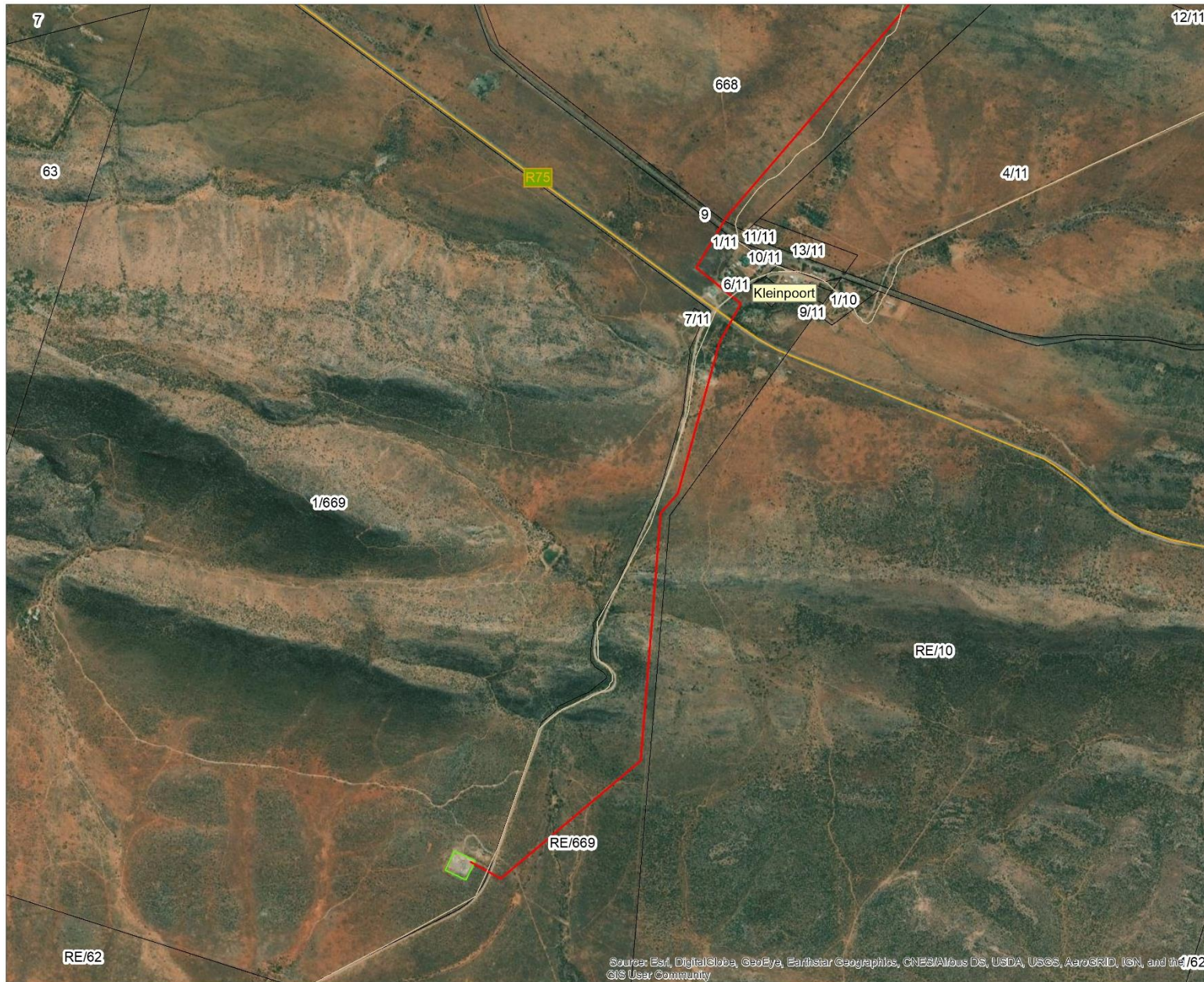
Version: 0



Job No: 1001792 Map by: WL
Projection: WGS_1984_UTM_Zone_35S

**Wolf OHPL and Shared Substation
Layout Plan - Map 2**

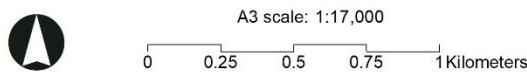
Figure 1-4 | Final layout - Map 2



- Legend**
- 132kV Gridline Connection for the Wolf Wind Farm (±13km)
 - Existing Wolf Substation
 - Existing Access Roads/Tracks

Notes:
 Aerial Imagery: ESRI
 No terrestrial ecology constraints

Date: 2022/03/23 Version: 0



Job No: 1001792 Map by: WL
 Projection: WGS_1984_UTM_Zone_35S

**Wolf OHPL and Shared Substation
 Sensitivities - Map 3**

Figure 1-5 | Final layout - Map 3

2 Conclusion

In conclusion it should be noted that the EMPr should be regarded as a living document and changes should be made to the EMPr as required by project evolution, while retaining the underlying principles and objectives on which the document is based.

The compilation of the EMPr has incorporated impacts and mitigation measures from the Environmental Impact Report, **specialist reports and all subsequent EA amendments and the micrositing and EMPr finalisation process** as well as incorporating principles of best practice in terms of environmental management. By identifying the potential impacts, mitigation measures, performance indicators, responsibilities, available resources, potential schedule, and verification responsibility, the EMPr has provided a platform on which both the construction phase and the operational phase EMPs can be founded. The EMPr has ensured that the individual EMPs will be able to incorporate mitigation measures based on the project in its entirety as opposed to phase-specific measures. The EMPr should be included in all tender documentation so that perspective services providers and Contractors are made aware of and able to price for compliance with the EMPr.

These EMPr, including the Shared substation and OHPL generic EMPRs, will be submitted to the DFFE following a 30-day public comment period. All comments and responses will be submitted to the DFFE for consideration in reaching a decision.