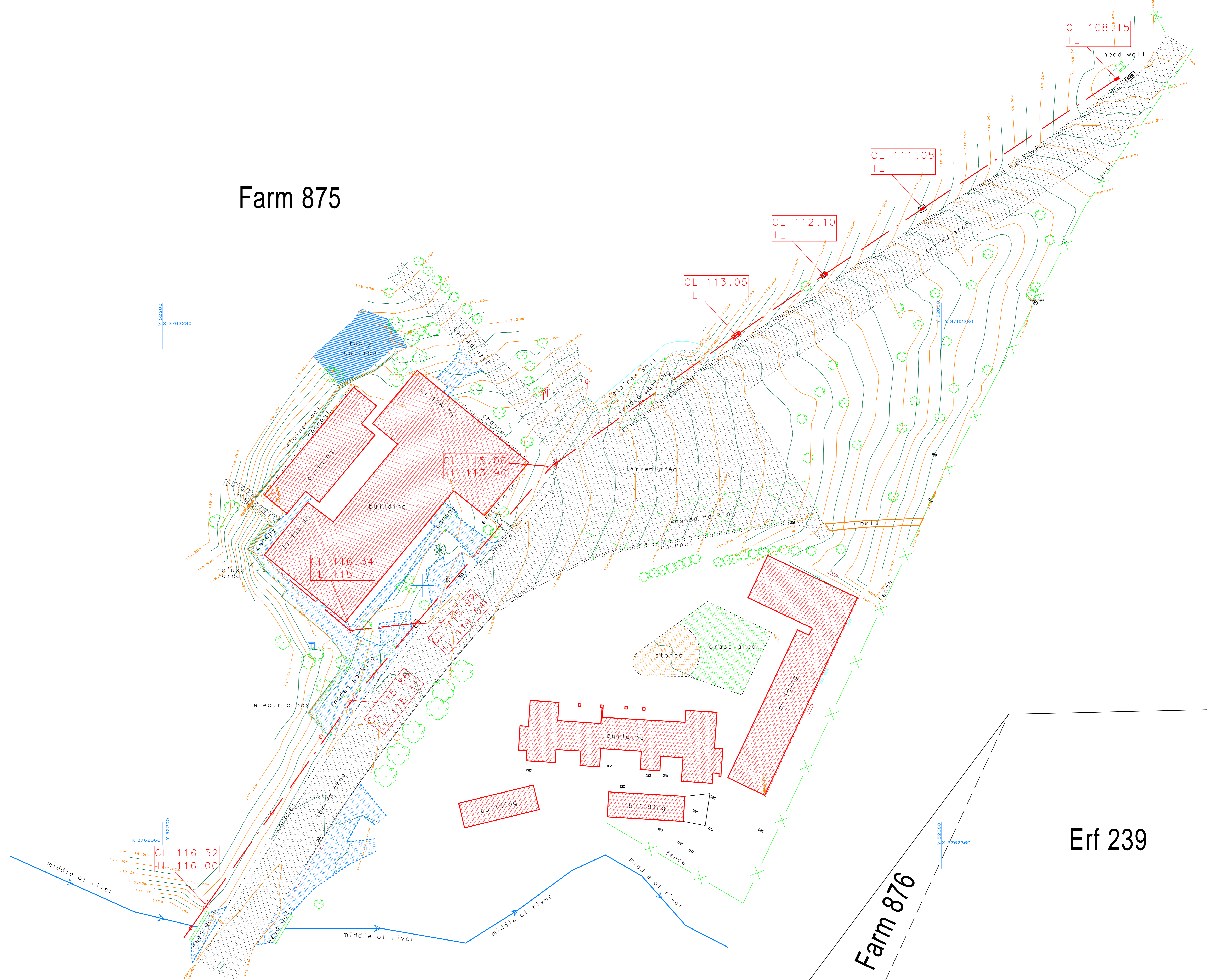
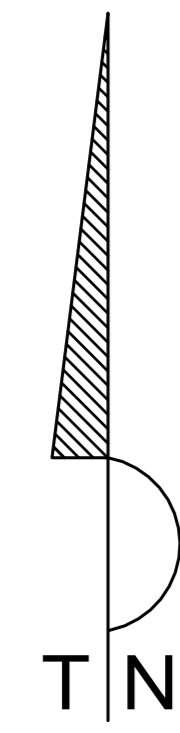


## Appendix C: Facility Illustrations

- Existing site layout (April 2014)
- Sketch designs (combined) for proposed parking and administration areas (September 2014)

# Farm 875



Erf 239

Farm 876

Amendments:		
No.	Date	Amendment

**Notes:**  
 1. Not all spot heights used to generate the contours are shown on this plan. These spot heights can be supplied in ASCII format.

Legend:	
	Edge of Top
	Top of kerb
	Fence
	Sewer line
	Stormwater
	Brickpaving area
	Compressor
	Draincover
	Sewer draincover
	Lamp Pole
	Aircon unit
	Fire Hydrant
	Grid catch pit
	Double grid catch pit

**Project:** TOPOGRAPHIC SURVEY  
 OVER FARM 875 (KIRSTENBOSCH)

**Client:** VMA ARCHITECTS (PTY) LTD

Arvind Bhawan  
 Professional Land Surveyors  
 Cadastral, Topographical and  
 Sectional Title Practitioners

Office No.102 Palace House, 1 Malta Road  
 Salt River 7925  
 Tel : (021) 447-7286 Fax : (021) 448-1099

SCALE 1/200  
 Date : 29/04/2014  
 Level Datum : M.S.L  
 Co-ord System : Wg 19  
 Contour Interval : 0,5m  
 File Ref.: CJ25A/A  
 Sheet 1 of 1 Sheet

**NOTES & SPECIFICATIONS**  
GENERAL

REVISION NOTES	
REV.	DESCRIPTION

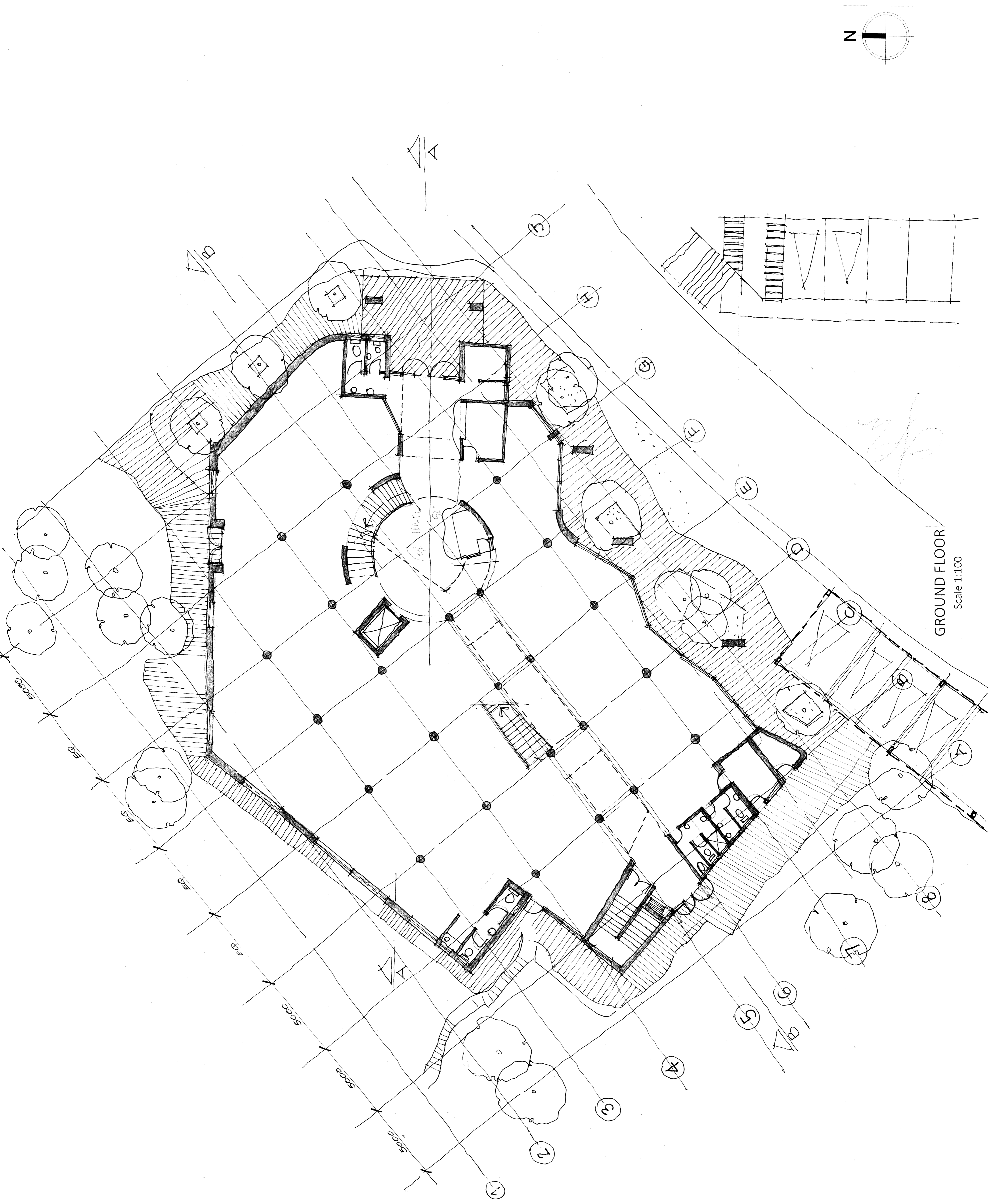
ARCHITECT .....  
OWNER .....

PROJECT TITLE  
**SANBI KIRSTENBOSCH,  
NEW ADMINISTRATION BUILDING,  
PARKING FACILITY AND REFURBISHMENTS  
OF FYNBOS LODGE**



**VMA**  
ARCHITECTS  
PRINCIPAL ARCHITECT: VERNON MATHEWS  
B.A.S. BARCH (UCT) M.I.A. - S.A.C.A.P. - PR.ARCH.782  
66 Long Street, 6th Floor, Cape Town  
E-MAIL: vmatom@vma.co.za  
FAX: 086 551 0156 TEL: 021 426 1950

DATE	AUGUST, 2014
DRAWING TITLE	GROUND FLOOR PLAN
BY	VM
PROJECT NO.	G 174 / 2013
DRAWING NO.	SK0001
SCALE	1:100 @ A1
REVISION	



**GROUND FLOOR**  
Scale 1:100

NOTES & SPECIFICATIONS  
GENERAL

REVISION NOTES

REV	DATE	BY	DESCRIPTION

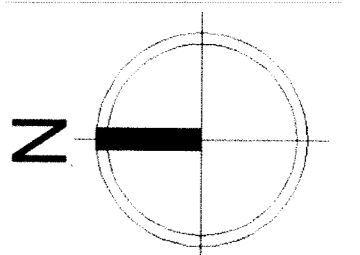
ARCHITECT .....  
OWNER .....

PROJECT TITLE  
SANBI KIRSTENBOSCH,  
NEW ADMINISTRATION BUILDING,  
PARKING FACILITY AND REFURBISHMENTS  
OF FYNBOS LODGE

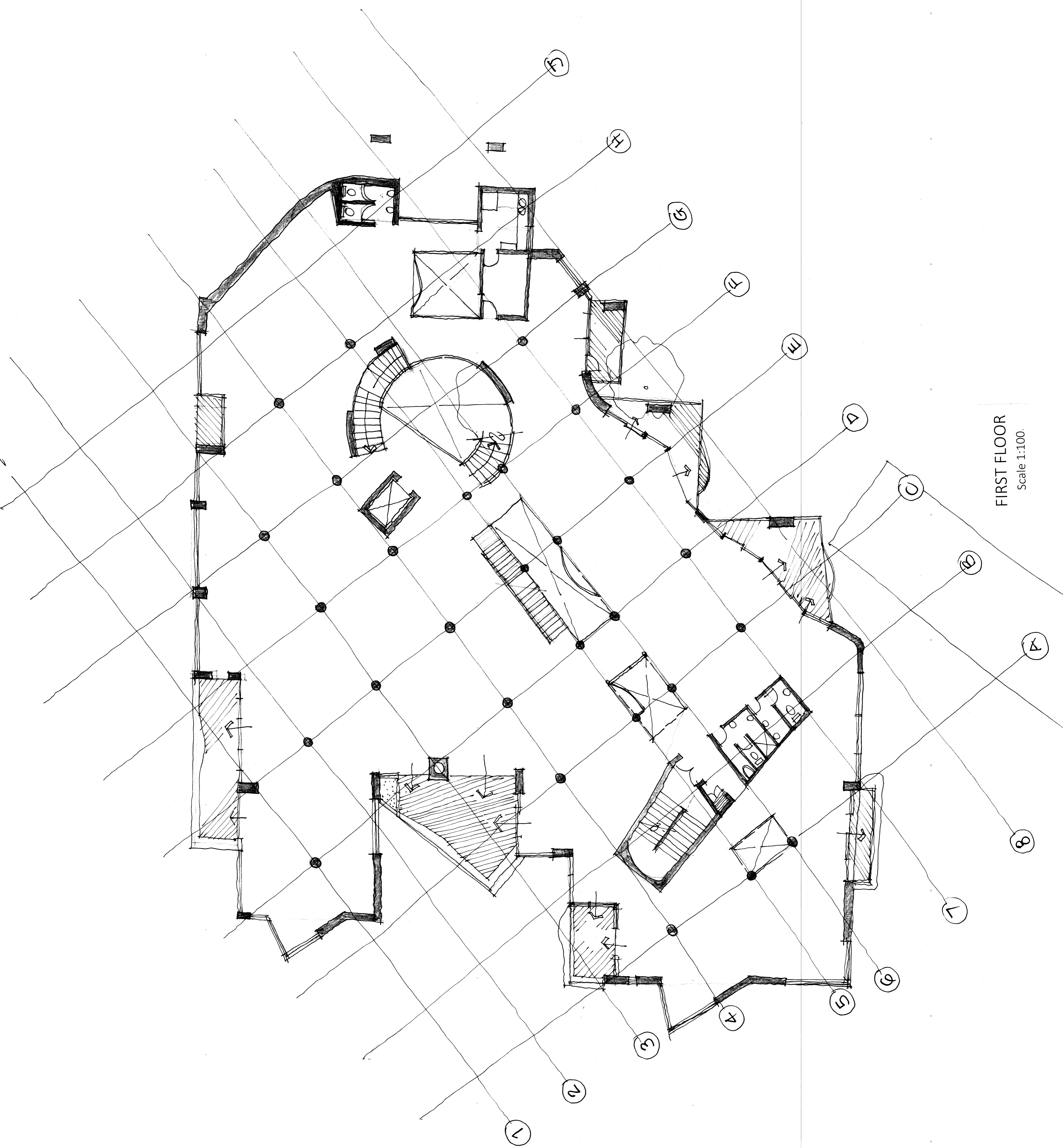


VMA  
ARCHITECTS  
PRINCIPAL ARCHITECT: VERNON MATHEWS  
8 AS BARCH (UCT) MILA - SACAP - PR ARCH 7762  
66 Long Street, 6th Floor, Cape Town  
Email: vernon@vma.co.za  
FAX: 085 951 0186 TEL: 021 426 1830

DATE	BY	SCALE	PROJECT NO.	REVISION
AUGUST 2014	VM	1:100 @ A1	SK0002	



FIRST FLOOR  
Scale 1:100.



NOTES & SPECIFICATIONS  
GENERAL

REVISION NOTES

REV	DATE	BY	DESCRIPTION

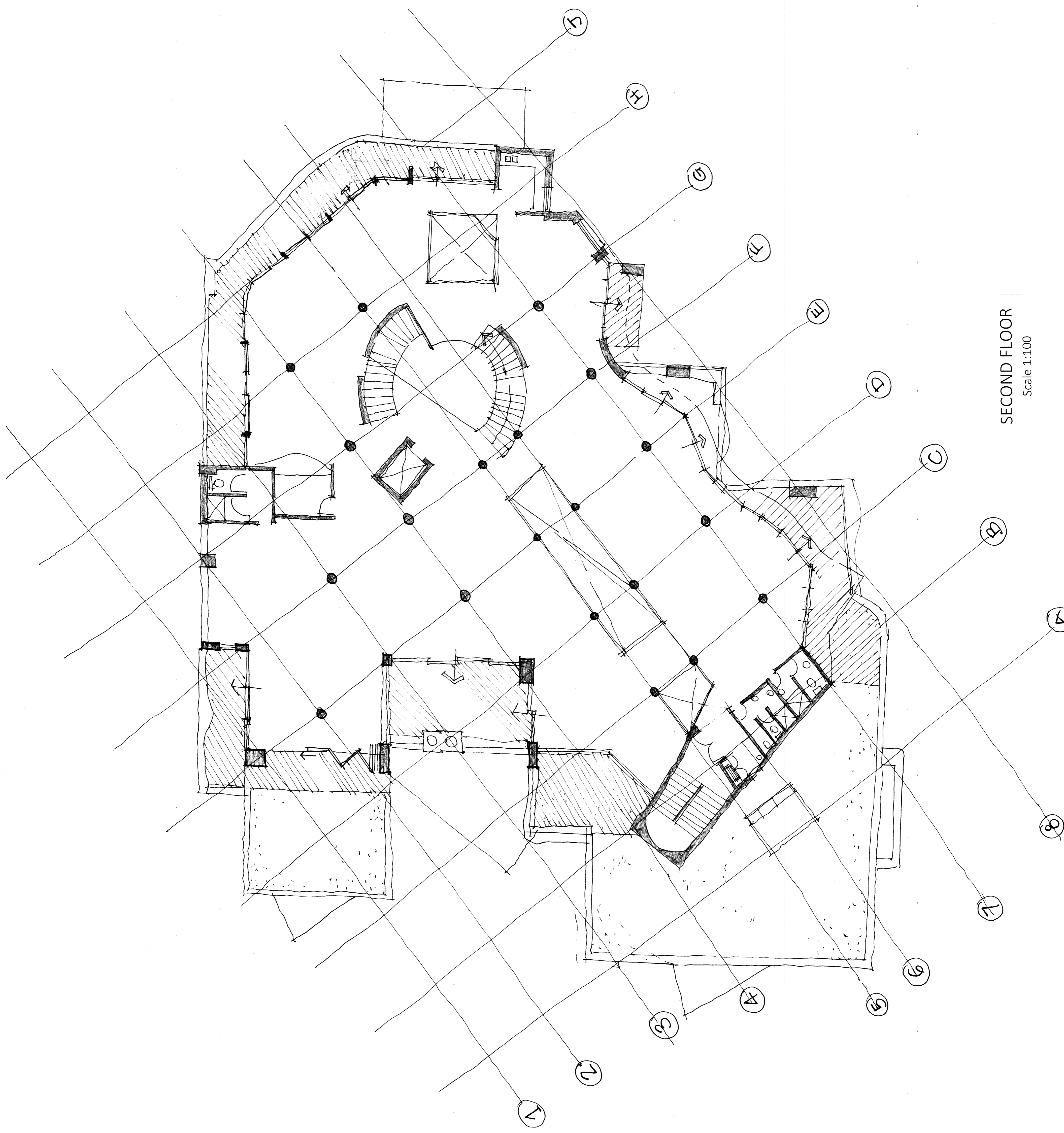
ARCHITECT .....  
OWNER .....

PROJECT TITLE  
SANBI KIRSTENBOSCH  
NEW ADMINISTRATION BUILDING  
PARKING FACILITY AND REFURBISHMENTS  
OF FYNBOS LODGE



VMA  
ARCHITECTS  
PRINCIPAL ARCHITECT: VERNON MATHEWS  
B.A.S. BARCH (UCT) M.I.A. - S.A.C.A.P. - PR.ARCH.7782  
66 Long Street, 6th Floor, Cape Town  
E-MAIL: vernon@m1994.com  
FAX: 086 551 0156, TEL: 021 426 1890

DRAWING TITLE	DATE
SECOND FLOOR PLAN	AUGUST, 2014
PROJECT NO.	BY
G174 / 2013	VM
REVISION	SCALE
	1:100 @ A1



SECOND FLOOR  
Scale 1:100

**NOTES & SPECIFICATIONS**  
GENERAL

**REVISION NOTES**

REV.	DATE	BY	DESCRIPTION

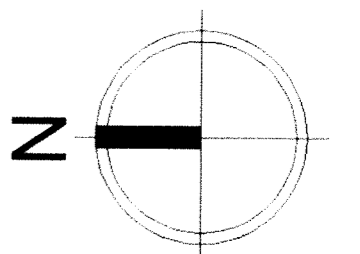
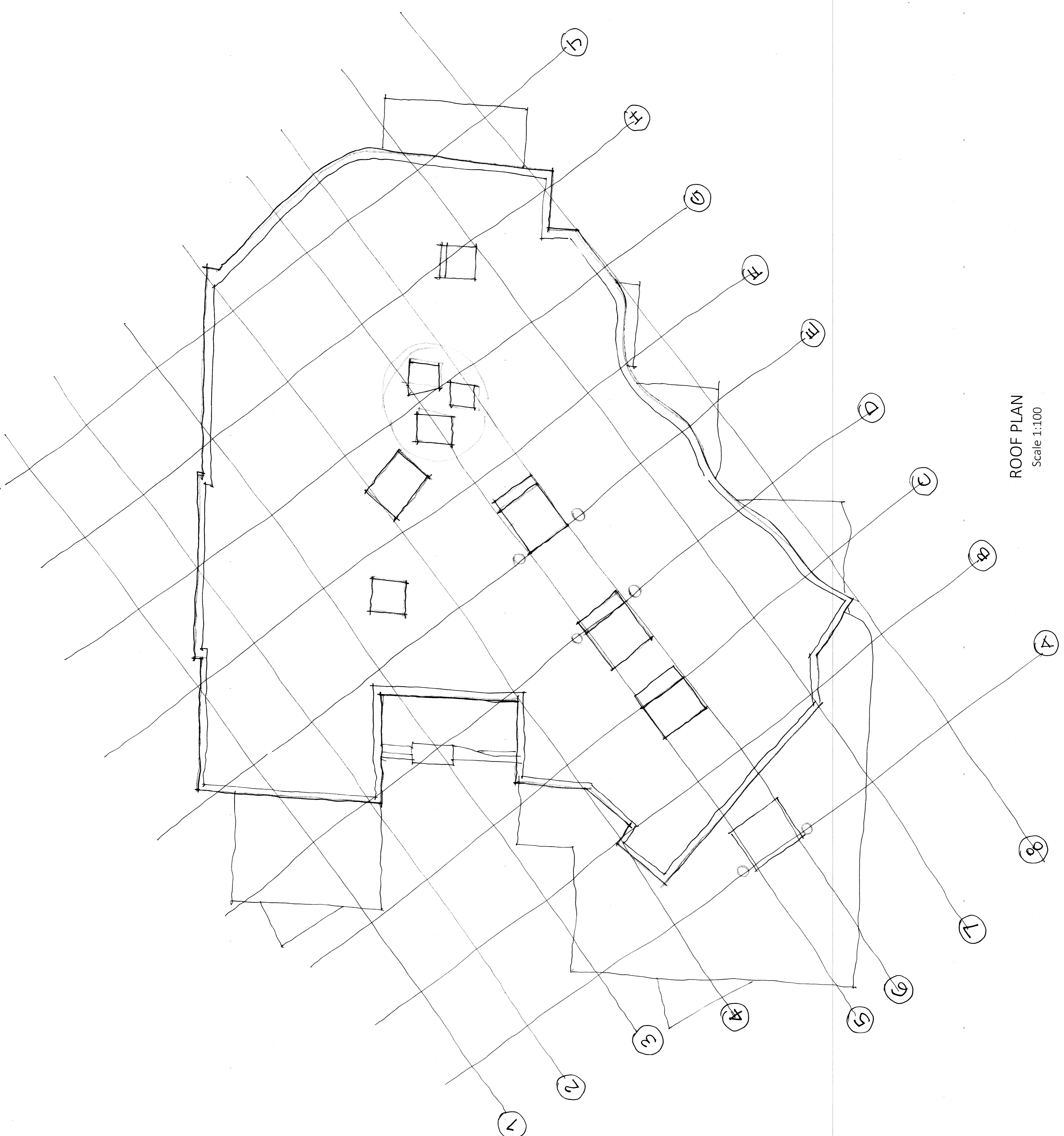
ARCHITECT .....  
OWNER .....

PROJECT TITLE  
**SANBI KIRSTENBOSCH  
NEW ADMINISTRATION BUILDING  
PARKING FACILITY AND REFURBISHMENTS  
OF PYNBOS LODGE**



**VMA**  
ARCHITECTS  
PRINCIPAL ARCHITECT: VERNON MATHEWS  
B.A.S. BAARCH (UCT) M.I.A. - S.A.C.P. - PR.Arch.7782  
66 Long Street, 6th Floor, Cape Town  
E-MAIL: vernon@vma1994.com  
FAX: 086 551 0156 TEL: 021 426 1930

DRAWING TITLE	DATE	BY
ROOF PLAN	AUGUST, 2014	VM
PROJECT NO.	DRAWING NO.	SCALE
GT14/2013	SK0004	1:100 @ A1
REVISION		



**ROOF PLAN**  
Scale 1:100

**REVISION NOTES**

REV.	DATE	BY	DESCRIPTION

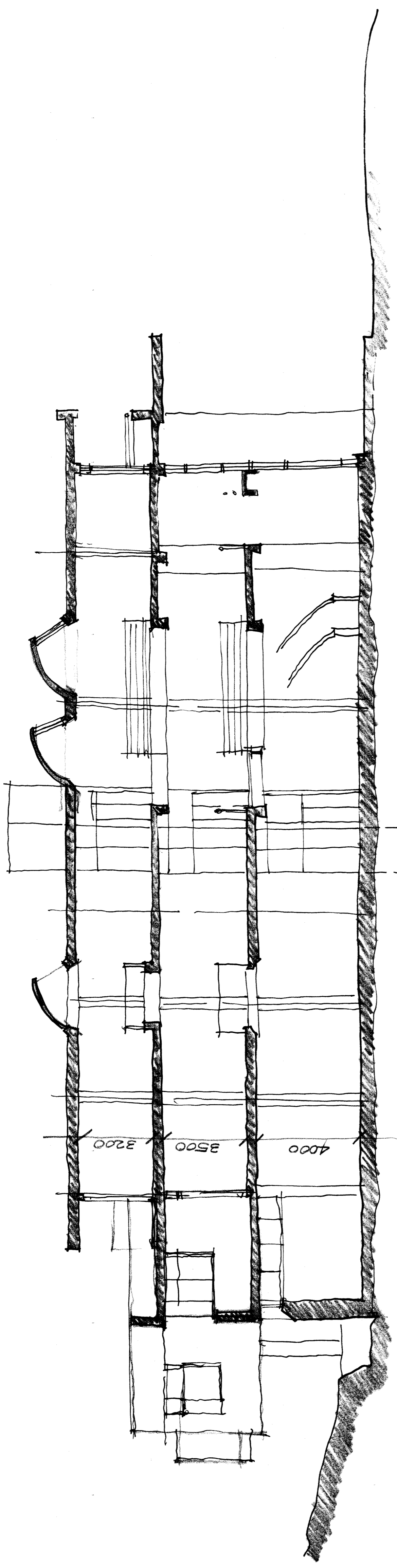
ARCHITECT .....  
OWNER .....

PROJECT TITLE  
**SANBI KIRSTENBOSCH,  
NEW ADMINISTRATION BUILDING,  
PARKING FACILITY AND REFURBISHMENTS  
OF FYNBOS LODGE**

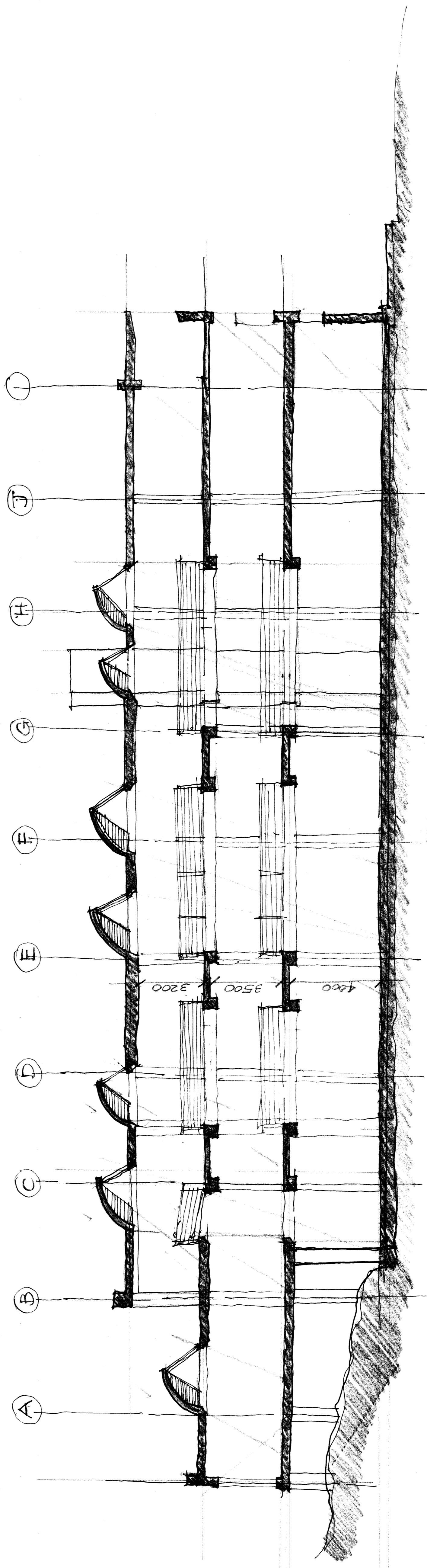


**VMA**  
ARCHITECTS  
PRINCIPAL ARCHITECT: VERNON WAREING  
BAS BARCH (UCT) M.A. ENCA (P) REGISTRAR  
66 Long Street 6th Floor, Cape Town  
E-MAIL: vma@vma.com  
FAX: 086 551 0156, TEL: 021 426 1930

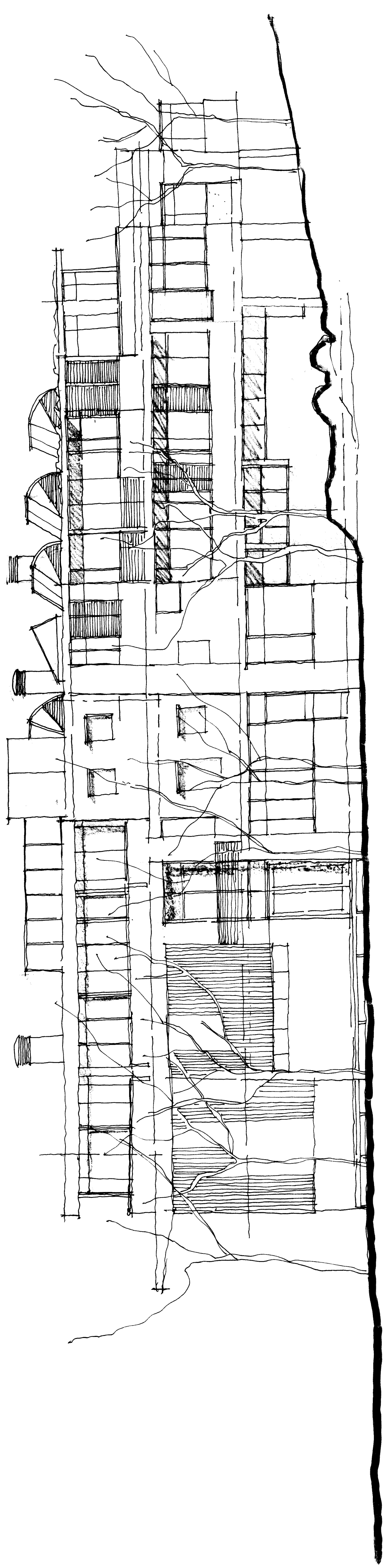
DRAWING TITLE: SECTION A - / SECTION B - B  
DATE: AUGUST 2014  
BY: VM  
PROJECT NO: G174 / 2013  
DRAWING NO: SK0005  
SCALE: 1:100 @ A1  
REVISION:



**SECTION A - A**  
Scale 1:100



**SECTION B - B**  
Scale 1:100



NORTH ELEVATION

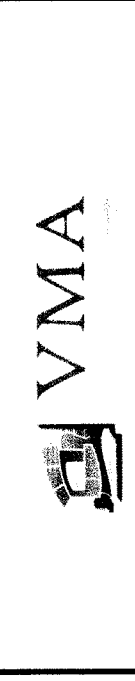
Scale 1:100

REVISION NOTES		
REV.	DATE.	DESCRIPTION

ARCHITECT .....

OWNER .....

PROJECT TITLE  
**SANBI KIRSTENBOSCH,  
 NEW ADMINISTRATION BUILDING,  
 PARKING FACILITY AND REFURBISHMENTS  
 OF FYNBOS LODGE**



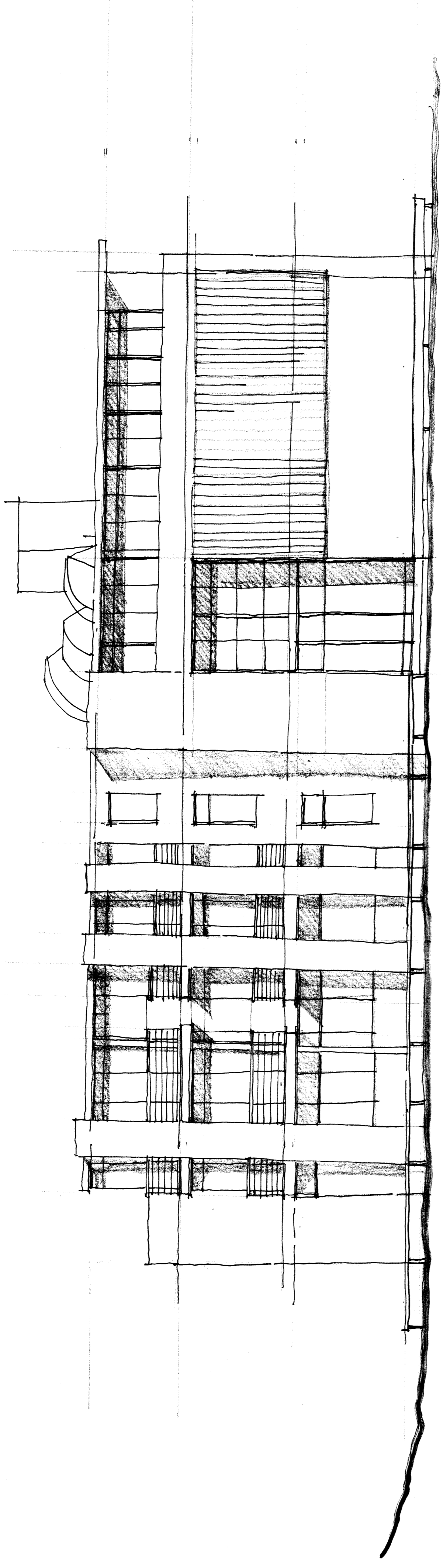
PRINCIPAL ARCHITECT: VERNON MATHEWS  
 B.A.S. BARCH (UCT) M.I.A. - S.A.C.A.P. - PR.ARCH.7782  
 66 Long Street, 6th Floor, Cape Town  
 E-MAIL: vernon@mm1984.com  
 FAX: 086 551 0156, TEL: 021 425 1930

DRAWING TITLE	DATE
NORTH ELEVATION	AUGUST, 2014
By	VM
PROJECT NO.	DRAWING NO.
G174 / 2013	SK0006
REVISION	SCALE

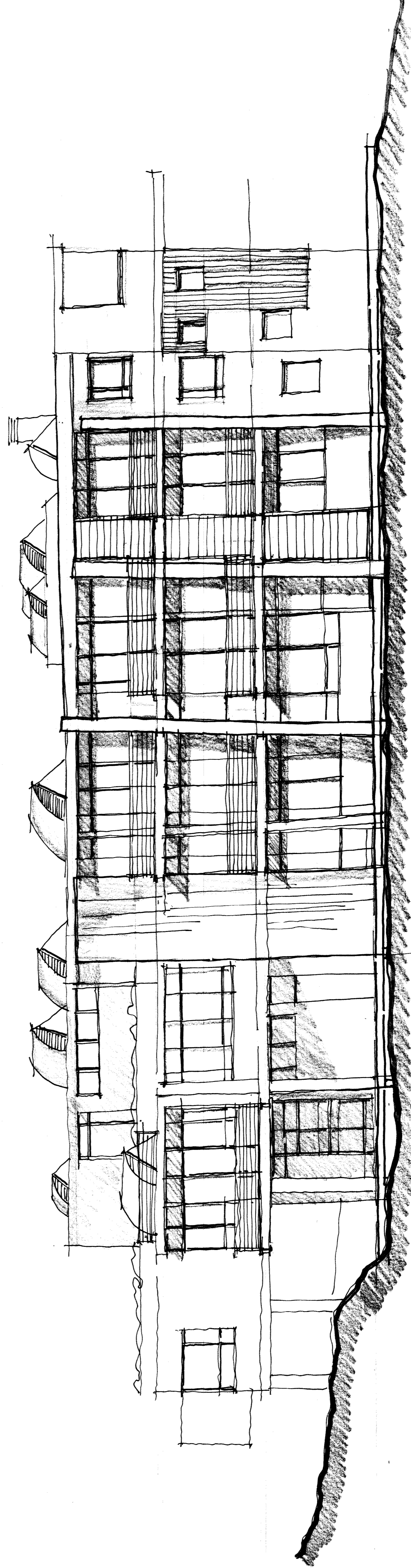


**NOTES & SPECIFICATIONS**

GENERAL



EAST ELEVATION  
Scale 1:100



SOUTH ELEVATION  
Scale 1:100

**REVISION NOTES**

REV.	DATE	BY	DESCRIPTION

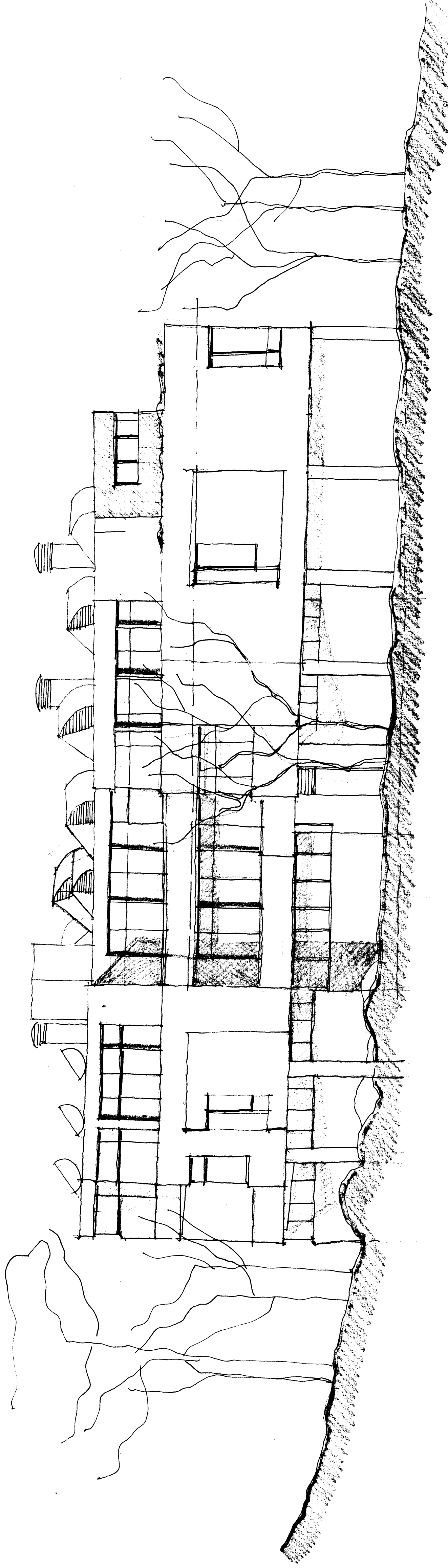
ARCHITECT  
OWNER

PROJECT TITLE  
**SANBI KRISTENBOSCH  
NEW ADMINISTRATION BUILDING  
PARKING FACILITY AND REFURBISHMENTS  
OF FYNBOS LODGE**



**VMA**  
ARCHITECTS  
PRINCIPAL ARCHITECT: VERNON MATHEWS  
B.A.S. BARCH (UCT) M.A. - S.A.C.A.P. - PR-ARCH-752  
66 Long Street, 6th Floor, Cape Town  
E-MAIL: vernon@vma1994.com  
FAX: 086 551 0156 TEL: 021 426 1930

DRAWING TITLE EAST ELEVATION / SOUTH ELEVATION	DATE AUGUST 2014
PROJECT NO. GT14 / 2013	DRAWING NO. SK0007
SCALE 1:100 @ A1	REVISION



WEST ELEVATION

Scale 1:100

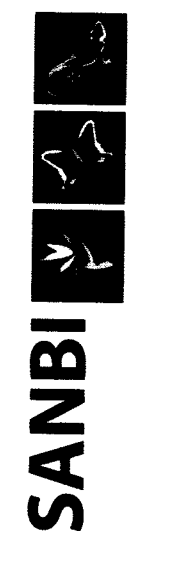
REVISION NOTES

REV.	DATE	BY	DESCRIPTION

ARCHITECT .....

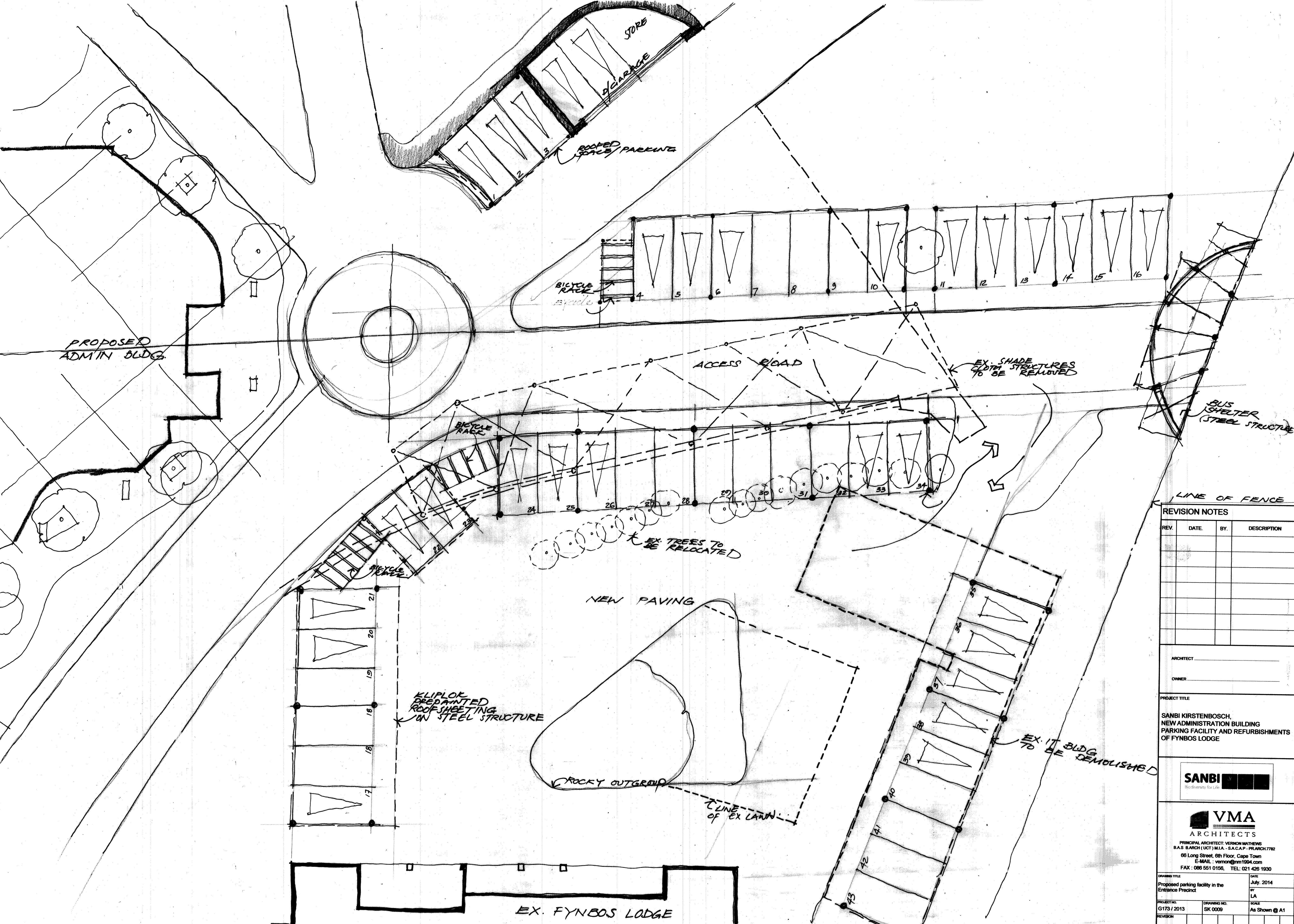
OWNER .....

PROJECT TITLE  
**SANBI KIRSTENBOSCH,  
 NEW ADMINISTRATION BUILDING,  
 PARKING FACILITY AND REFURBISHMENTS  
 OF FYNBOS LODGE**



**VMA**  
 VERNON MATHEWS ARCHITECTS  
 PRINCIPAL ARCHITECT, VERNON MATHEWS  
 B.A.S. BARCH (UCT) M.I.A. - S.A.C.A.P. - PR-ARCH.7782  
 66 Long Street, 6th Floor, Cape Town  
 E-MAIL : vernon@vma1994.com  
 FAX : 086 551 0156, TEL: 021 426 1930

DRAWING TITLE	DATE	BY	SCALE	REVISION
WEST ELEVATION	AUGUST, 2014	VM	1:100 @ A1	
PROJECT NO.	DRAWING NO.	SCALE		
G174 / 2013	SK0008	1:100 @ A1		



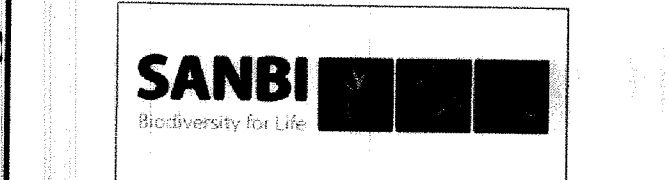
LINE OF FENCE

REVISION NOTES

REV.	DATE	BY.	DESCRIPTION

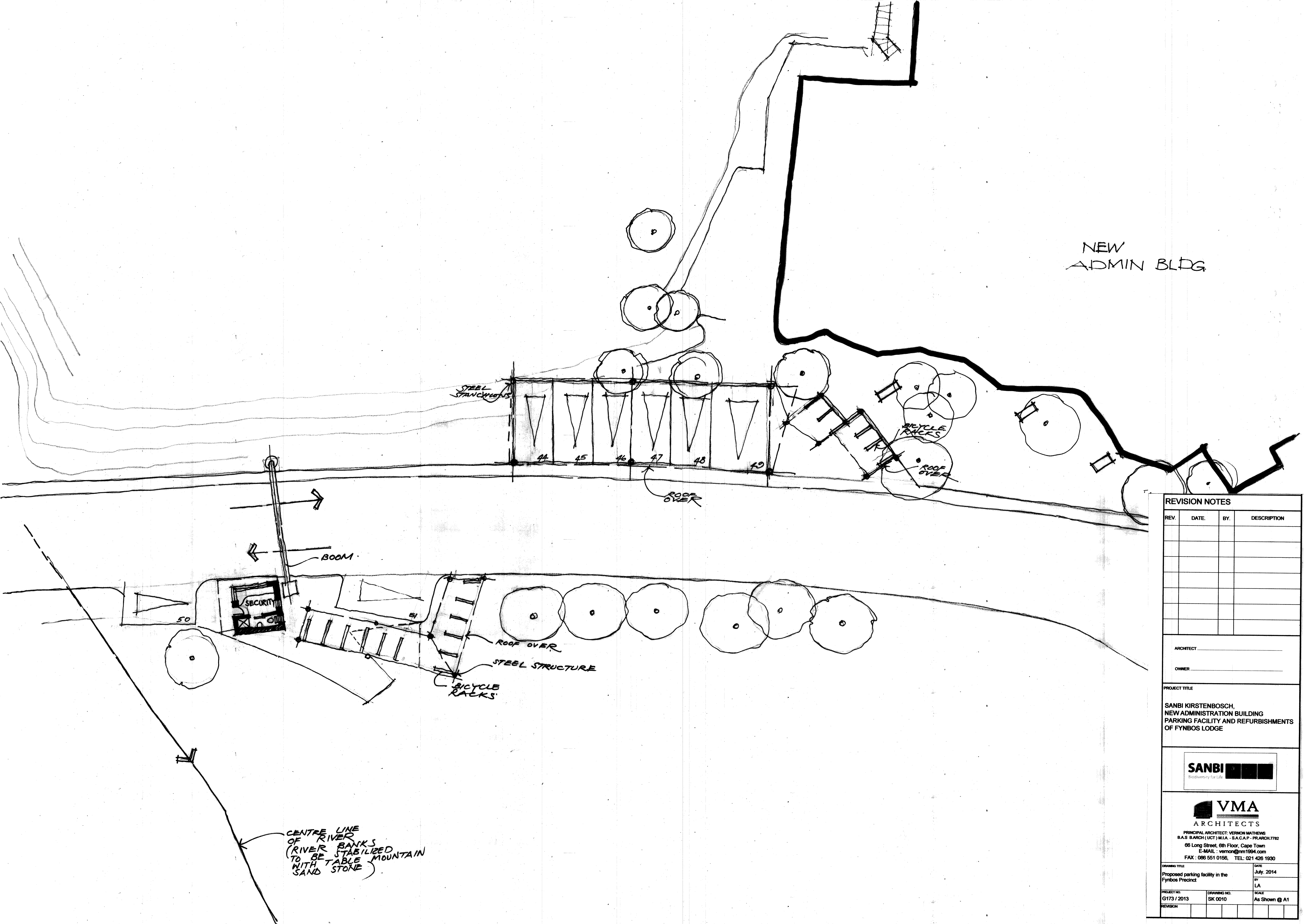
ARCHITECT \_\_\_\_\_  
 OWNER \_\_\_\_\_

PROJECT TITLE  
 SANBI KIRSTENBOSCH,  
 NEW ADMINISTRATION BUILDING  
 PARKING FACILITY AND REFRUBISHMENTS  
 OF FYNBOS LODGE



**VMA**  
 ARCHITECTS  
 PRINCIPAL ARCHITECT: VERNON MATHEWS  
 B.A.S. B.A.RCH (UCT) M.I.A. - S.A.C.A.P. - P.R.A.RCH.7782  
 86 Long Street, 8th Floor, Cape Town  
 E-MAIL: vernon@mm1994.com  
 FAX: 086 551 0156, TEL: 021 426 1930

DRAWING TITLE Proposed parking facility in the Entrance Precinct	DATE July, 2014
PROJECT NO. G173 / 2013	SCALE As Shown @ A1
DRAWING NO. SK 0009	REVISION



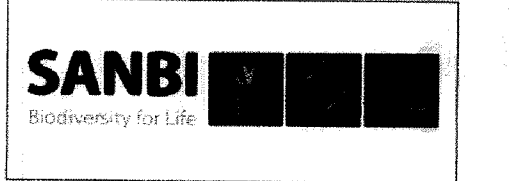
NEW ADMIN BLDG

REVISION NOTES

REV.	DATE	BY.	DESCRIPTION

ARCHITECT \_\_\_\_\_  
 OWNER \_\_\_\_\_

PROJECT TITLE  
**SANBI KIRSTENBOSCH,  
 NEW ADMINISTRATION BUILDING  
 PARKING FACILITY AND REFURBISHMENTS  
 OF FYNBOS LODGE**



**VMA**  
 ARCHITECTS  
 PRINCIPAL ARCHITECT: VERNON MATHEWS  
 B.A.S. BARCH (UCT) M.I.A. - S.A.C.A.P. - PR-ARCH 7782  
 86 Long Street, 8th Floor, Cape Town  
 E-MAIL: vermon@nm1994.com  
 FAX: 086 551 0156, TEL: 021 426 1930

DRAWING TITLE Proposed parking facility in the Fynbos Precinct		DATE July, 2014
PROJECT NO. G173 / 2013	DRAWING NO. SK 0010	SCALE As Shown @ A1
REVISION		

CENTRE LINE OF RIVER  
 (RIVER BANKS TO BE STABILIZED TO BE TABLE MOUNTAIN SAND STONE)