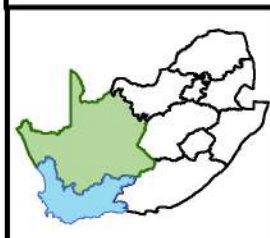


Legend

- Roads
- Rivers (NBA 2018)
- Provincial boundaries
- Project area**
 - Sutherland project area
 - Authorised Rietrug WEF
- REDZs**
 - Komsberg Wind
- Strategic Transmission corridor**
 - Central corridor
- Authorised Sutherland Facilities**
 - Authorised 132kV Acrux to Koring Gridline (DFFE Ref: 14/12/16/3/3/1/2077)
 - Authorised Sutherland 400kV powerlines (DFFE Ref: 14/12/16/3/3/1/2077)
 - Authorised Sutherland 500m Grid Corridor (DFFE Ref: 14/12/16/3/3/1/2077)
- Acrux Substation**
- Authorised on-site substation**
 - Authorised Switching Station (Eskom) (DFFE Ref: 14/12/16/3/3/1/2457)
 - Authorised 33kV/132kV Substation (IPP) (DFFE Ref: 14/12/16/3/3/1/2458)
 - Authorised 132kV powerline from the Acrux substation (Eskom, DFFE Ref: 14/12/16/3/3/2457)
- Proposed Sutherland "WEF" Facilities (DFFE Ref: 12/12/20/1782/2)**
 - WEF access road
 - Proposed internal access roads and underground cabling
 - Proposed turbine hardstands
 - Proposed turbine locations
 - WEF buildable areas
- Batching Plant**
 - Batching site
 - Batching site access road
 - Batching plant access point
- Koring MTS**
 - Proposed 400kV MTS site
 - Proposed road



Prepared for:
Nala Environmental Consulting Firm

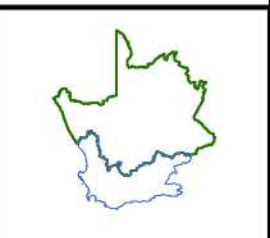
Prepared by:
Ecofluence Consulting

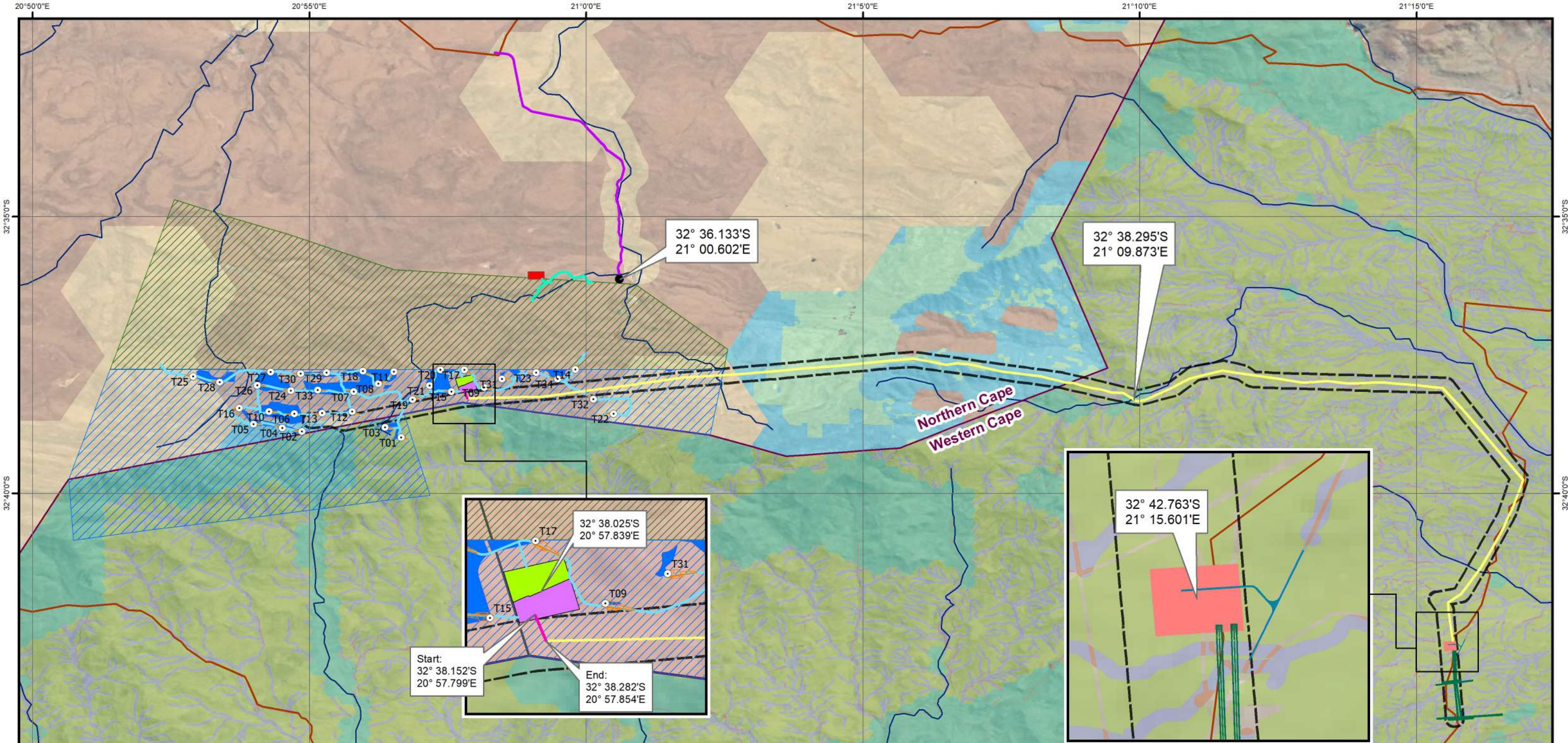
FINAL LAYOUT MAP OVERLAIN ON THE REDZ AND STRATEGIC TRANSMISSION CORRIDOR MAP

Proposed Sutherland Wind Energy Facilities, Grid and associated infrastructure.

Province	Northern Cape	Western Cape
District Municipality	Namakwa	Central Karoo
Local Municipality	Karoo Hoogland	Laingsburg

Coordinate System: GCS WGS 1984
Datum: WGS 1984
Units: Degree
Scale: 1:175 000
Date: December 2022





- Legend**
- Roads
 - Rivers (NBA 2018)
 - Provincial boundaries
 - Project area**
 - Sutherland project area
 - Authorised Rietrug WEF

- Authorised Sutherland Facilities**
- Authorised 132kV Acrux to Koring Gridline (DFFE Ref: 14/12/16/3/3/1/2077)
 - Authorised Sutherland 400kV powerlines (DFFE Ref: 14/12/16/3/3/1/2077)
 - Authorised Sutherland 500m Grid Corridor (DFFE Ref: 14/12/16/3/3/1/2077)
- Acrux Substation**
- Authorised on-site substation**
- Authorised Switching Station (Eskom) (DFFE Ref: 14/12/16/3/3/1/2457)
 - Authorised 33kV/132kV Substation (IPP) (DFFE Ref: 14/12/16/3/3/1/2458)
 - Authorised 132kV powerline from the Acrux substation (Eskom, DFFE Ref: 14/12/16/3/3/2457)

- Proposed Sutherland "WEF" Facilities (DFFE Ref: 12/12/20/1782/2)**
- WEF access road
 - Proposed internal access roads and underground cabling
 - Proposed turbine hardstands
 - Proposed turbine locations
 - WEF buildable areas

- Batching Plant**
- Batching site
 - Batching site access road
 - Batching plant access point
- Koring MTS**
- Proposed 400kV MTS site
 - Proposed road

- Northern Cape CBA Categories (2017)**
- CBA 1
 - CBA 2
 - ESA
 - ONA
- Western Cape CBA Categories Laingsburg BSP (2017)**
- CBA 1
 - ESA
 - ESA 2
 - ONA

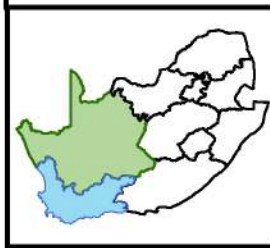
Start:
32° 38.152'S
20° 57.799'E

End:
32° 38.282'S
20° 57.854'E

32° 36.133'S
21° 00.602'E

32° 38.295'S
21° 09.873'E

32° 42.763'S
21° 15.601'E



Prepared for:
Nala Environmental Consulting Firm

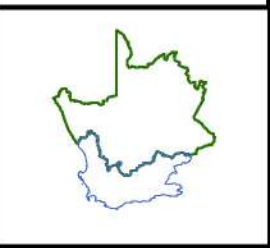
Prepared by:
Ecofluence Consulting

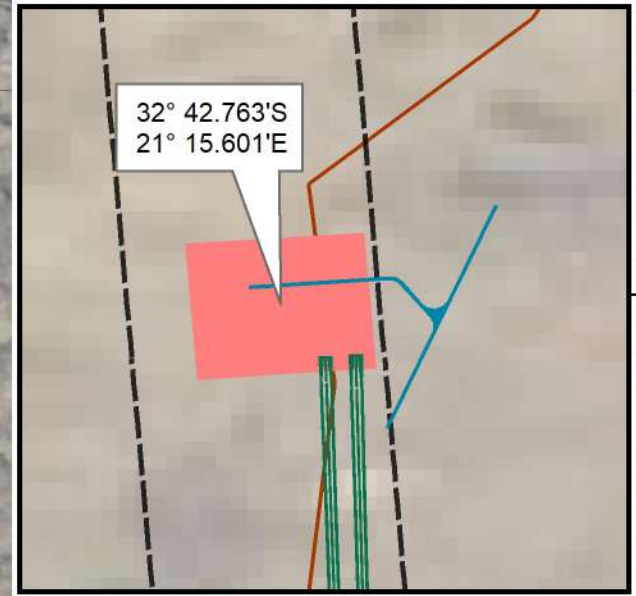
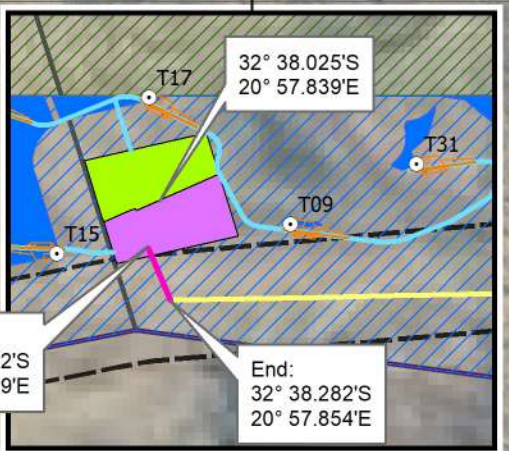
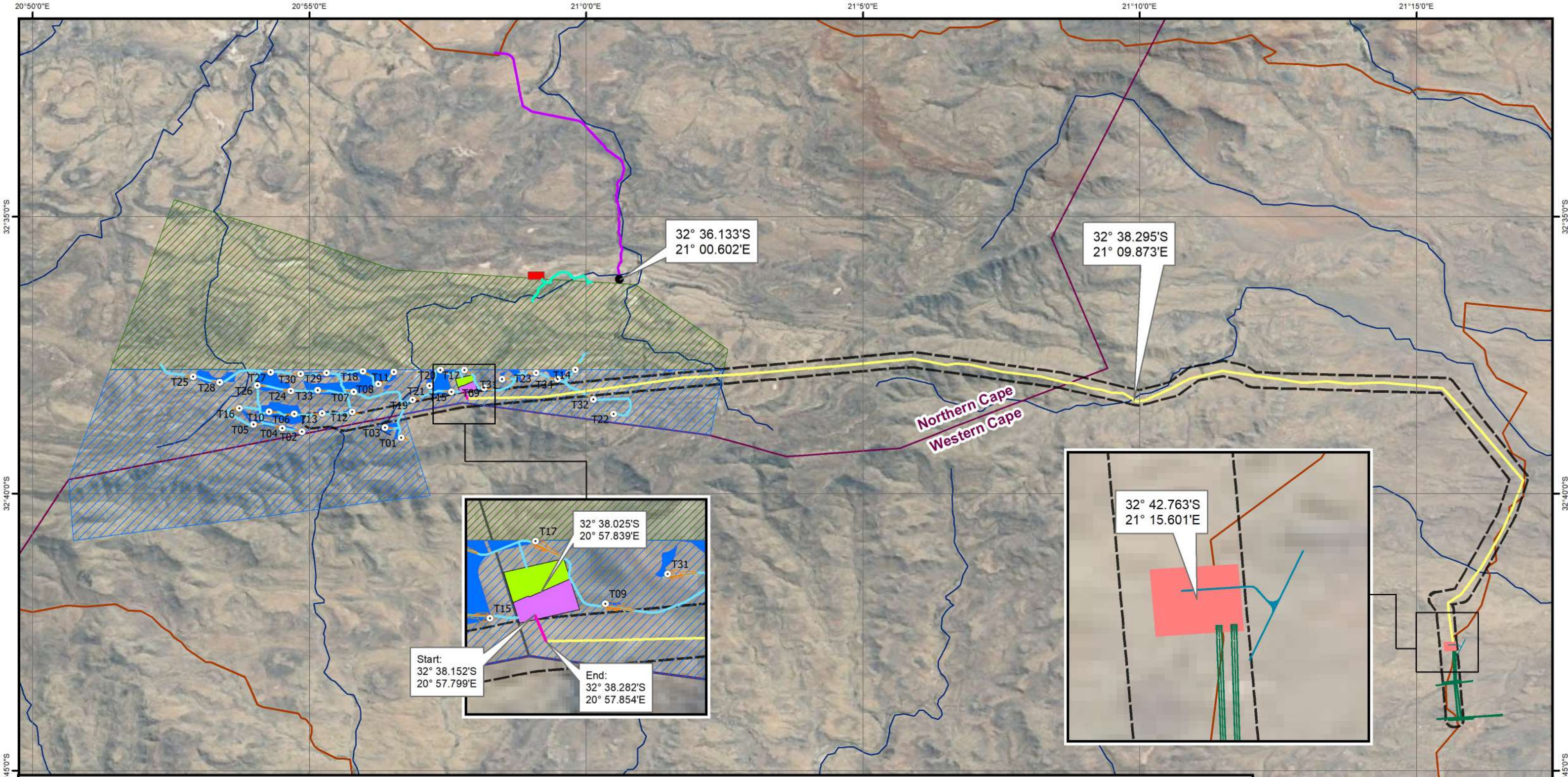
FINAL LAYOUT MAP OVERLAIN ON THE CRITICAL BIODIVERSITY AREAS MAP

Proposed Sutherland Wind Energy Facilities, Grid and associated infrastructure.

Province	Northern Cape	Western Cape
District Municipality	Namakwa	Central Karoo
Local Municipality	Karoo Hoogland	Laingsburg

Coordinate System: GCS WGS 1984
Datum: WGS 1984
Units: Degree
Scale: 1:125 000
Date: December 2022





Legend

- Roads
- Rivers (NBA 2018)
- Provincial boundaries

Project area

- Sutherland project area
- Authorised Rietrug WEF

Authorised Sutherland Facilities

- Authorised 132kV Acrux to Koring Gridline (DFFE Ref: 14/12/16/3/3/1/2077)
- Authorised Sutherland 400kV powerlines (DFFE Ref: 14/12/16/3/3/1/2077)
- Authorised Sutherland 500m Grid Corridor (DFFE Ref: 14/12/16/3/3/1/2077)

Acrux Substation

Authorised on-site substation

- Authorised Switching Station (Eskom) (DFFE Ref: 14/12/16/3/3/1/2457)
- Authorised 33kV/132kV Substation (IPP) (DFFE Ref: 14/12/16/3/3/1/2458)
- Authorised 132kV powerline from the Acrux substation (Eskom, DFFE Ref: 14/12/16/3/3/2457)

Proposed Sutherland "WEF" Facilities (DFFE Ref: 12/12/20/1782/2)

- WEF access road
- Proposed internal access roads and underground cabling
- Proposed turbine hardstands
- Proposed turbine locations
- WEF buildable areas

Batching Plant

- Batching site
- Batching site access road
- Batching plant access point

Koring MTS

- Proposed 400kV MTS site
- Proposed road



Prepared for:
Nala Environmental Consulting Firm

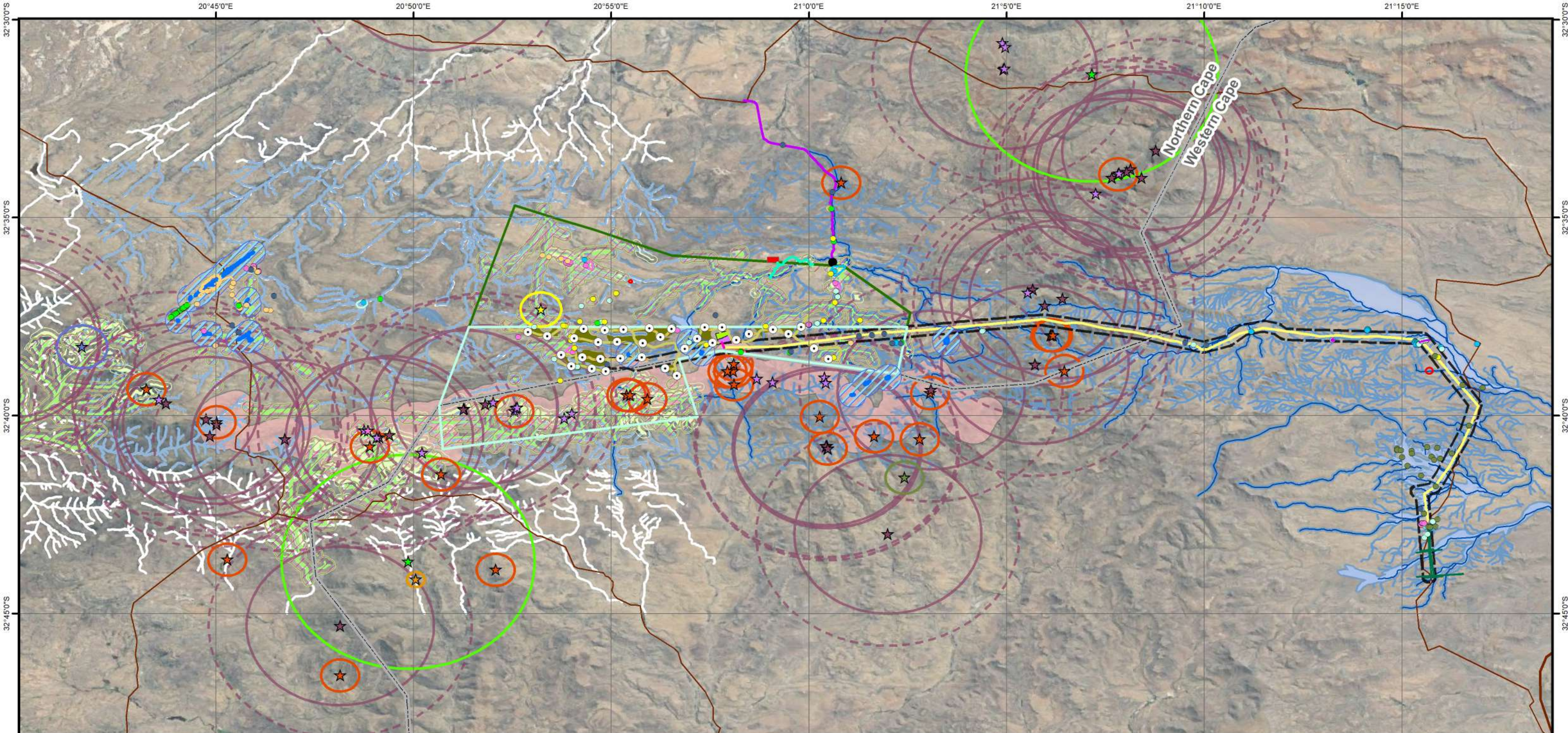
Prepared by:
Ecofluence Consulting

FINAL LAYOUT MAP
Proposed Sutherland Wind Energy Facilities, Grid and associated infrastructure.

Province	Northern Cape	Western Cape
District Municipality	Namakwa	Central Karoo
Local Municipality	Karoo Hoogland	Laingsburg

Coordinate System: GCS WGS 1984
Datum: WGS 1984
Units: Degree
Scale: 1:125 000
Date: December 2022





Legend

- Roads
- Provincial boundaries
- Project area**
 - Sutherland project area
 - Authorised Rietrug WEF
- Authorised Sutherland Facilities**
 - Authorised 132kV Acruz to Koring Gridline (DFFE Ref: 14/12/16/3/3/1/2077)
 - Authorised Sutherland 400kV powerlines (DFFE Ref: 14/12/16/3/3/1/2077)
 - Authorised Sutherland 500m Grid Corridor (DFFE Ref: 14/12/16/3/3/1/2077)
- Acruz Substation**
 - Authorised on-site substation
 - Authorised Switching Station (Eskom) (DFFE Ref: 14/12/16/3/3/1/2457)
 - Authorised 33kV/132kV Substation (IPP) (DFFE Ref: 14/12/16/3/3/1/2458)
 - Authorised 132kV powerline from the Acruz substation (Eskom, DFFE Ref: 14/12/16/3/3/2457)
- Proposed Sutherland "WEF" Facilities (DFFE Ref: 12/12/20/1782/2)**
 - WEF access road
 - Proposed internal access roads and underground cabling
 - Proposed turbine hardstands
 - Proposed turbine locations
 - WEF buildable areas
- Batching Plant**
 - Batching site
 - Batching site access road
 - Batching plant access point
- Koring MTS**
 - Proposed 400kV MTS site
 - Proposed road
- Specialist sensitivities**
 - Heritage sensitivity**
 - Palaeontology - No Go
 - Heritage sites**
 - Graded sites**
 - GPA
 - GPB
 - GPC
 - IIIA
 - IIIB
 - IIIC
 - NCW
 - IIIC / GPA-GPB
 - NCW - GPC
 - Graded heritage sites 50m buffers**
 - GPA - Stone wall
 - GPA
 - GPB
 - GPC
 - IIIA
 - IIIB
 - IIIC / GPA-GPB
 - IIIC
- Aquatic sensitivity**
 - Drainage lines**
 - High - turbine exclusion zones
 - High buffer (100m)
 - Medium - turbine exclusion zones
 - Medium buffer (50m)
 - Wetlands**
 - Wetlands buffer (50m)
 - Regulatory area (500m)
 - Bat sensitivity**
 - High
 - High buffer (200m)
 - Moderate
 - Moderate buffer (150m)
 - Turbine blade length buffer (100m)
- Avifaunal sensitivity**
 - Nests**
 - African Harrier Hawk
 - Black Harrier
 - Booted Eagle
 - Hamerkop
 - Jackal Buzzard
 - Martial Eagle
 - Pale Chanting Goshawk
 - Verreaux's Eagle
 - White-necked Raven
- Buffers**
 - African Harrier Hawk buffer (750m)
 - Black Harrier buffer - all infrastructure exclusion zone (800m)
 - Booted Eagle buffer (1km)
 - Jackal Buzzard buffer (750m)
 - Martial Eagle buffer (5km)
 - Pale Chanting Goshawk buffer (350m)
 - Verreaux's Eagle buffer (3.7km)
 - Verreaux's Eagle buffer - medium (5.2km)
 - Escarpment exclusion zone (660m)
 - Drainage turbine exclusion zone (200m)
 - Drainage turbine exclusion zone (50m)



Prepared for:
Nala Environmental Consulting Firm



Prepared by:
Ecofluence Consulting

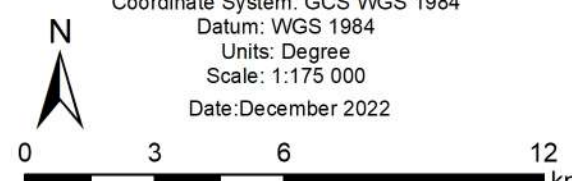


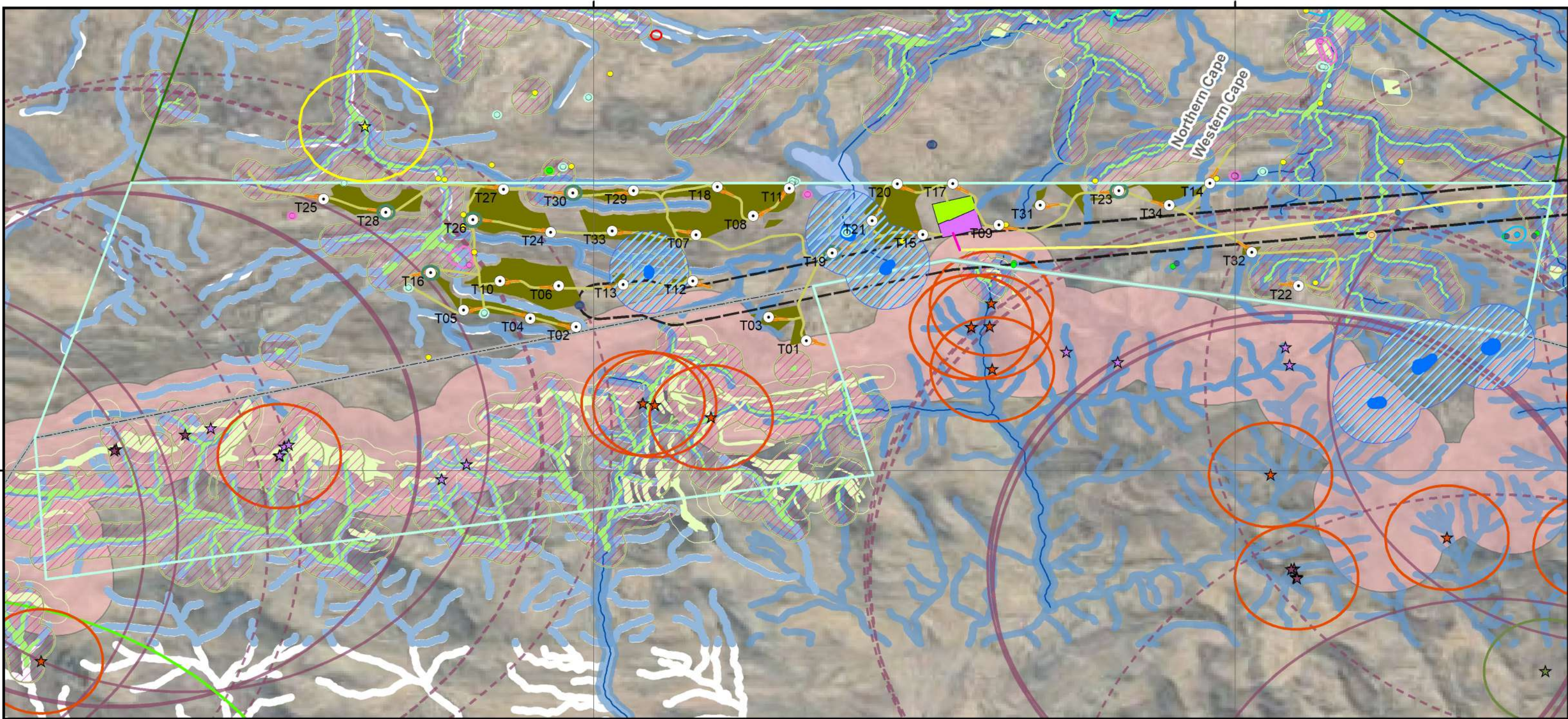
FINAL LAYOUT MAP OVERLAIN ON SPECIALIST SENSITIVITIES:

Proposed Sutherland Wind Energy Facilities, Grid and associated infrastructure.

Province	Northern Cape	Western Cape
District Municipality	Namakwa	Central Karoo
Local Municipality	Karoo Hoogland	Laingsburg

Coordinate System: GCS WGS 1984
Datum: WGS 1984
Units: Degree
Scale: 1:175 000
Date: December 2022

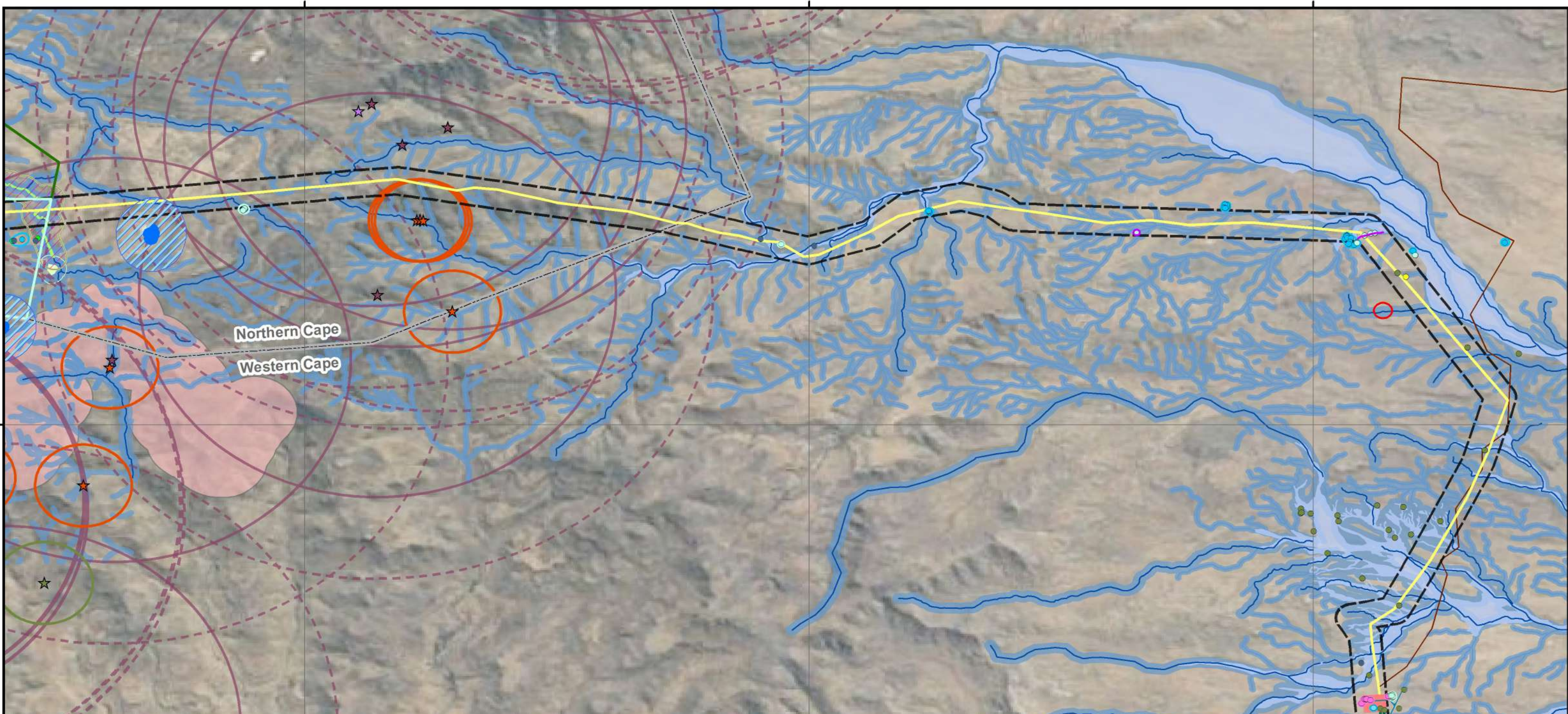


Legend

- Roads
- Provincial boundaries
- Project area**
 - Sutherland project area
 - Authorised Rietrug WEF
- Authorised Sutherland Facilities**
 - Authorised 132kV Acruz to Koring Gridline (DFFE Ref: 14/12/16/3/3/1/2077)
 - Authorised Sutherland 500m Grid Corridor (DFFE Ref: 14/12/16/3/3/1/2077)
- Acruz Substation**
 - Authorised on-site substation
 - Authorised Switching Station (Eskom) (DFFE Ref: 14/12/16/3/3/1/2457)
 - Authorised 33kV/132kV Substation (IPP) (DFFE Ref: 14/12/16/3/3/1/2458)
 - Authorised 132kV powerline from the Acruz substation (Eskom, DFFE Ref: 14/12/16/3/3/1/2457)
 - Proposed internal access roads and underground cabling
 - Proposed turbine hardstands
 - Proposed turbine locations
 - WEF buildable areas
 - Batching site access road
- Specialist sensitivities**
 - Heritage sensitivity**
 - Palaeontology - No Go
 - Heritage sites**
 - Graded sites**
 - GPA
 - GPB
 - GPC
 - IIIA
 - IIIC / GPA-GPB
 - NCW - GPC
 - Graded heritage sites 50m buffers**
 - GPA
 - GPB
 - GPC
 - IIIC / GPA-GPB
- Aquatic sensitivity**
 - Drainage lines**
 - High - turbine exclusion zones
 - High buffer (100m)
 - Medium - turbine exclusion zones
 - Medium buffer (50m)
 - Wetlands**
 - Wetlands buffer (50m)
 - Regulatory area (500m)
 - Bat sensitivity**
 - High
 - High buffer (200m)
 - Moderate
 - Moderate buffer (150m)
 - Turbine blade length buffer (100m)
- Avifaunal sensitivity**
 - Nests**
 - African Harrier Hawk
 - Black Harrier
 - Jackal Buzzard
 - Verreaux's Eagle
 - White-necked Raven
 - Avifaunal buffers**
 - African Harrier Hawk buffer (750m)
 - Black Harrier buffer - all infrastructure exclusion zone (800m)
 - Jackal Buzzard buffer (750m)
 - Martial Eagle buffer (5km)
 - Verreaux's Eagle buffer (3.7km)
 - Verreaux's Eagle buffer - medium (5.2km)
 - Escarpment exclusion zone (660m)
 - Drainage turbine exclusion zone (200m)
 - Drainage turbine exclusion zone (50m)

	Prepared for: Nala Environmental Consulting Firm 	Prepared by: Ecofluence Consulting 	FINAL LAYOUT MAP OVERLAIN ON SPECIALIST SENSITIVITIES: WEF section Proposed Sutherland Wind Energy Facilities, Grid and associated infrastructure.	<table border="1"> <tr> <th>Province</th> <td>Northern Cape</td> <td>Western Cape</td> </tr> <tr> <th>District Municipality</th> <td>Namakwa</td> <td>Central Karoo</td> </tr> <tr> <th>Local Municipality</th> <td>Karoo Hoogland</td> <td>Laingsburg</td> </tr> </table>	Province	Northern Cape	Western Cape	District Municipality	Namakwa	Central Karoo	Local Municipality	Karoo Hoogland	Laingsburg	<p>Coordinate System: GCS WGS 1984 Datum: WGS 1984 Units: Degree Scale: 1:55 000 Date: December 2022</p>	
	Province	Northern Cape	Western Cape												
District Municipality	Namakwa	Central Karoo													
Local Municipality	Karoo Hoogland	Laingsburg													



Legend

- Roads
- Provincial boundaries
- Project area**
 - Sutherland project area
 - Authorised Rietrug WEF
- Authorised Sutherland Facilities**
 - Authorised 132kV Acruz to Koring Gridline (DFFE Ref: 14/12/16/3/3/1/2077)
 - Authorised Sutherland 400kV powerlines (DFFE Ref: 14/12/16/3/3/1/2077)
 - Authorised Sutherland 500m Grid Corridor (DFFE Ref: 14/12/16/3/3/1/2077)
- Koring MTS**
 - Proposed 400kV MTS site
 - Proposed road
- Specialist sensitivities**
- Heritage sensitivity**
 - Palaeontology - No Go
- Graded sites**
 - GPB
 - GPC
 - IIIA
 - IIIB
 - IIIC
 - NCW
 - IIIC / GPA-GPB
 - NCW - GPC
- Graded heritage sites 50m buffers**
 - IIIB
 - IIIC
- Aquatic sensitivity**
- Drainage lines**
 - High - turbine exclusion zones
 - High buffer (100m)
 - Medium - turbine exclusion zones
 - Medium buffer (50m)
- Wetlands**
 - Wetlands buffer (50m)
 - Regulatory area (500m)
- Bat sensitivity**
 - High
 - High buffer (200m)
 - Moderate
 - Moderate buffer (150m)
- Avifaunal sensitivity**
- Nests**
 - African Harrier Hawk
 - Jackal Buzzard
 - Verreaux's Eagle
 - White-necked Raven
- Avifaunal buffers**
 - African Harrier Hawk buffer (750m)
 - Jackal Buzzard buffer (750m)
 - Verreaux's Eagle buffer (3.7km)
 - Verreaux's Eagle buffer - medium (5.2km)
 - Escarpment exclusion zone (660m)
 - Drainage turbine exclusion zone (200m)



Prepared for:
Nala Environmental Consulting Firm

Prepared by:
Ecofluence Consulting

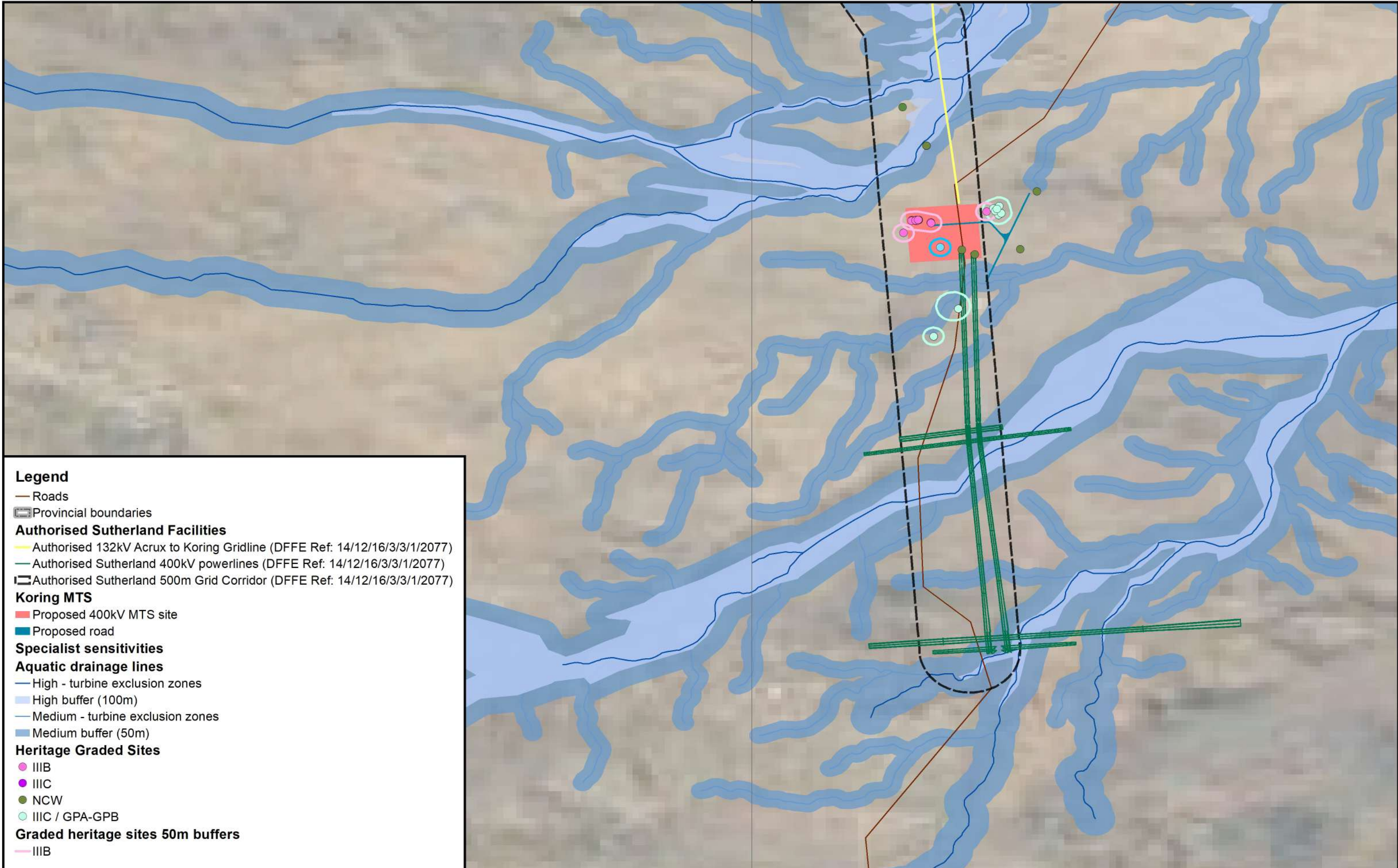
FINAL LAYOUT MAP OVERLAIN ON SPECIALIST SENSITIVITIES: Grid section

Proposed Sutherland Wind Energy Facilities, Grid and associated infrastructure.

Province	Northern Cape	Western Cape
District Municipality	Namakwa	Central Karoo
Local Municipality	Karoo Hoogland	Laingsburg

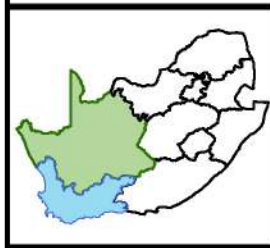
Coordinate System: GCS WGS 1984
Datum: WGS 1984
Units: Degree
Scale: 1:70 000
Date: December 2022





Legend

- Roads
- ▭ Provincial boundaries
- Authorised Sutherland Facilities**
- Authorised 132kV Acrux to Koring Gridline (DFFE Ref: 14/12/16/3/3/1/2077)
- Authorised Sutherland 400kV powerlines (DFFE Ref: 14/12/16/3/3/1/2077)
- ▭ Authorised Sutherland 500m Grid Corridor (DFFE Ref: 14/12/16/3/3/1/2077)
- Koring MTS**
- ▭ Proposed 400kV MTS site
- ▭ Proposed road
- Specialist sensitivities**
- Aquatic drainage lines**
- High - turbine exclusion zones
- ▭ High buffer (100m)
- Medium - turbine exclusion zones
- ▭ Medium buffer (50m)
- Heritage Graded Sites**
- IIIB
- IIIC
- NCW
- IIIC / GPA-GPB
- Graded heritage sites 50m buffers**
- IIIB



Prepared for:
Nala Environmental Consulting Firm

Prepared by:
Ecofluence Consulting

FINAL LAYOUT MAP OVERLAIN ON SPECIALIST SENSITIVITIES: Koring MTS

Proposed Sutherland Wind Energy Facilities, Grid and associated infrastructure.

Province	Northern Cape	Western Cape
District Municipality	Namakwa	Central Karoo
Local Municipality	Karoo Hoogland	Laingsburg

Coordinate System: GCS WGS 1984
Datum: WGS 1984
Units: Degree
Scale: 1:20 000
Date: December 2022

