

**Legend**

- Roads
- Rivers (NBA 2018)
- Provincial boundaries
- Project area**
  - Authorised Sutherland WEF
  - Rietrug Project Area
- REDZs**
  - Komsberg Wind
- Strategic Transmission corridor**
  - Central corridor

**Authorised Sutherland Facilities**

- Authorised 132kV Acrux to Koring Gridline (DFFE Ref: 14/12/16/3/3/1/2077)
- Authorised Sutherland 400kV powerlines (DFFE Ref: 14/12/16/3/3/1/2077)
- Authorised Sutherland 500m Grid Corridor (DFFE Ref: 14/12/16/3/3/1/2077)

**Acrux Substation**

**Authorised on-site substation**

- Authorised Switching Station (Eskom) (DFFE Ref: 14/12/16/3/3/1/2457)
- Authorised 33kV/132kV Substation (IPP) (DFFE Ref: 14/12/16/3/3/1/2458)
- Authorised 132kV powerline from the Acrux substation (Eskom, DFFE Ref: 14/12/16/3/3/2457)

**Proposed Rietrug WEF Facilities ( DFFE REF: 12/12/20/1782/1)**

- WEF access road
- Proposed turbine hardstand
- Proposed internal access roads and underground cabling
- Proposed turbine locations
- Rietrug buildable areas

**Batching Plant**

- Batching site
- Batching site access road
- Batching plant access point

**Koring MTS**

- Proposed 400kV MTS site
- Proposed road



Prepared for:  
Nala Environmental Consulting Firm

Prepared by:  
Ecofluence Consulting

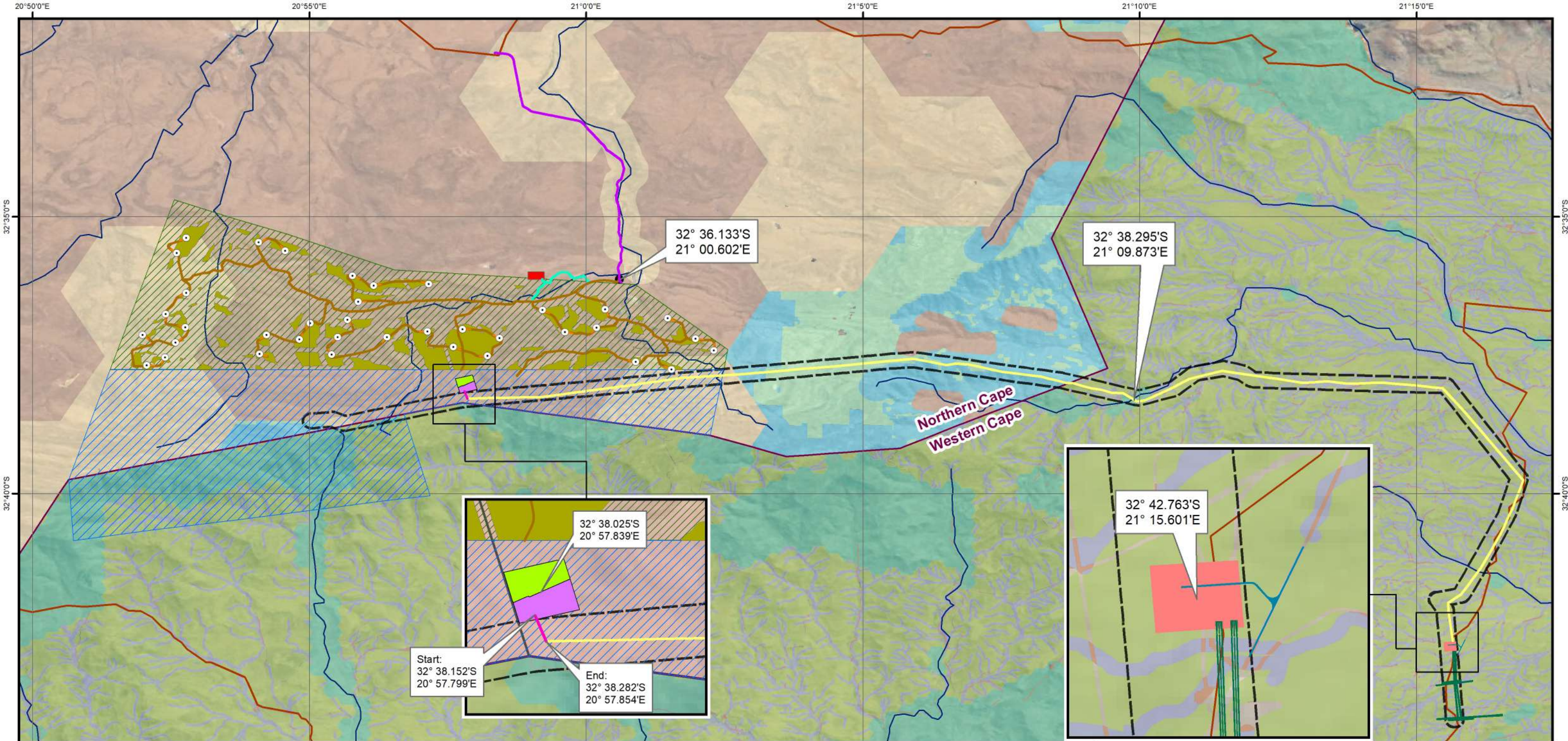
**FINAL LAYOUT MAP OVERLAIN ON THE REDZ AND STRATEGIC TRANSMISSION CORRIDOR MAP**

**Proposed Rietrug Wind Energy Facilities, Grid and associated infrastructure.**

Province	Northern Cape	Western Cape
District Municipality	Namakwa	Central Karoo
Local Municipality	Karoo Hoogland	Laingsburg

Coordinate System: GCS WGS 1984  
Datum: WGS 1984  
Units: Degree  
Scale: 1:175 000  
Date: December 2022





**Legend**

- Roads
- Rivers (NBA 2018)
- Provincial boundaries

**Project area**

- Authorised Sutherland WEF
- Rietrug Project Area

**Authorised Sutherland Facilities**

- Authorised 132kV Acrux to Koring Gridline (DFFE Ref: 14/12/16/3/3/1/2077)
- Authorised Sutherland 400kV powerlines (DFFE Ref: 14/12/16/3/3/1/2077)
- Authorised Sutherland 500m Grid Corridor (DFFE Ref: 14/12/16/3/3/1/2077)

**Acrux Substation**

- Authorised on-site substation
- Authorised Switching Station (Eskom) (DFFE Ref: 14/12/16/3/3/1/2457)
- Authorised 33kV/132kV Substation (IPP) (DFFE Ref: 14/12/16/3/3/1/2458)
- Authorised 132kV powerline from the Acrux substation (Eskom, DFFE Ref: 14/12/16/3/3/2457)

**Proposed Rietrug WEF Facilities (DFFE REF: 12/12/20/1782/1)**

- WEF access road
- Proposed turbine hardstand
- Proposed internal access roads and underground cabling
- Proposed turbine locations
- Rietrug buildable areas

**Batching Plant**

- Batching site
- Batching site access road
- Batching plant access point

**Koring MTS**

- Proposed 400kV MTS site
- Proposed road

**Northern Cape CBA Categories (2017)**

- CBA 1
- CBA 2
- ESA
- ONA

**Western Cape CBA Categories Laingsburg BSP (2017)**

- CBA 1
- ESA
- ESA 2
- ONA



Prepared for:  
Nala Environmental Consulting Firm

Prepared by:  
Ecofluence Consulting

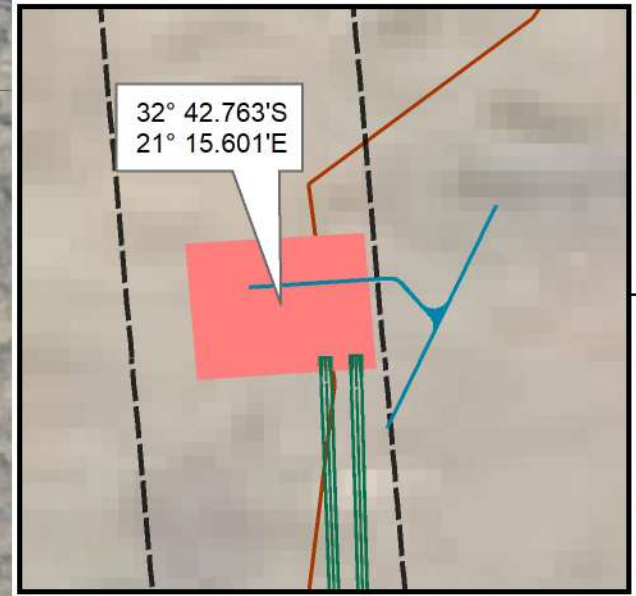
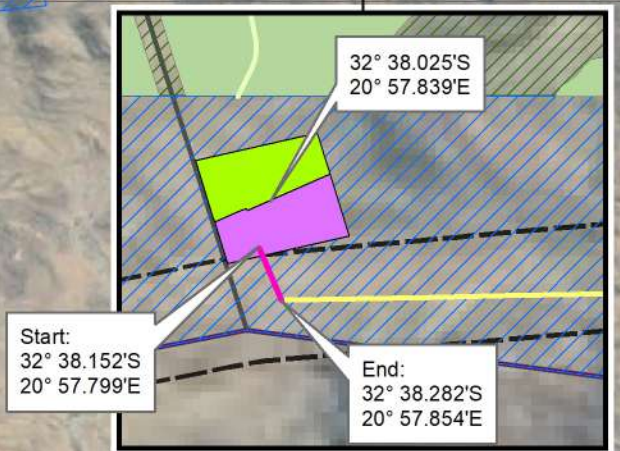
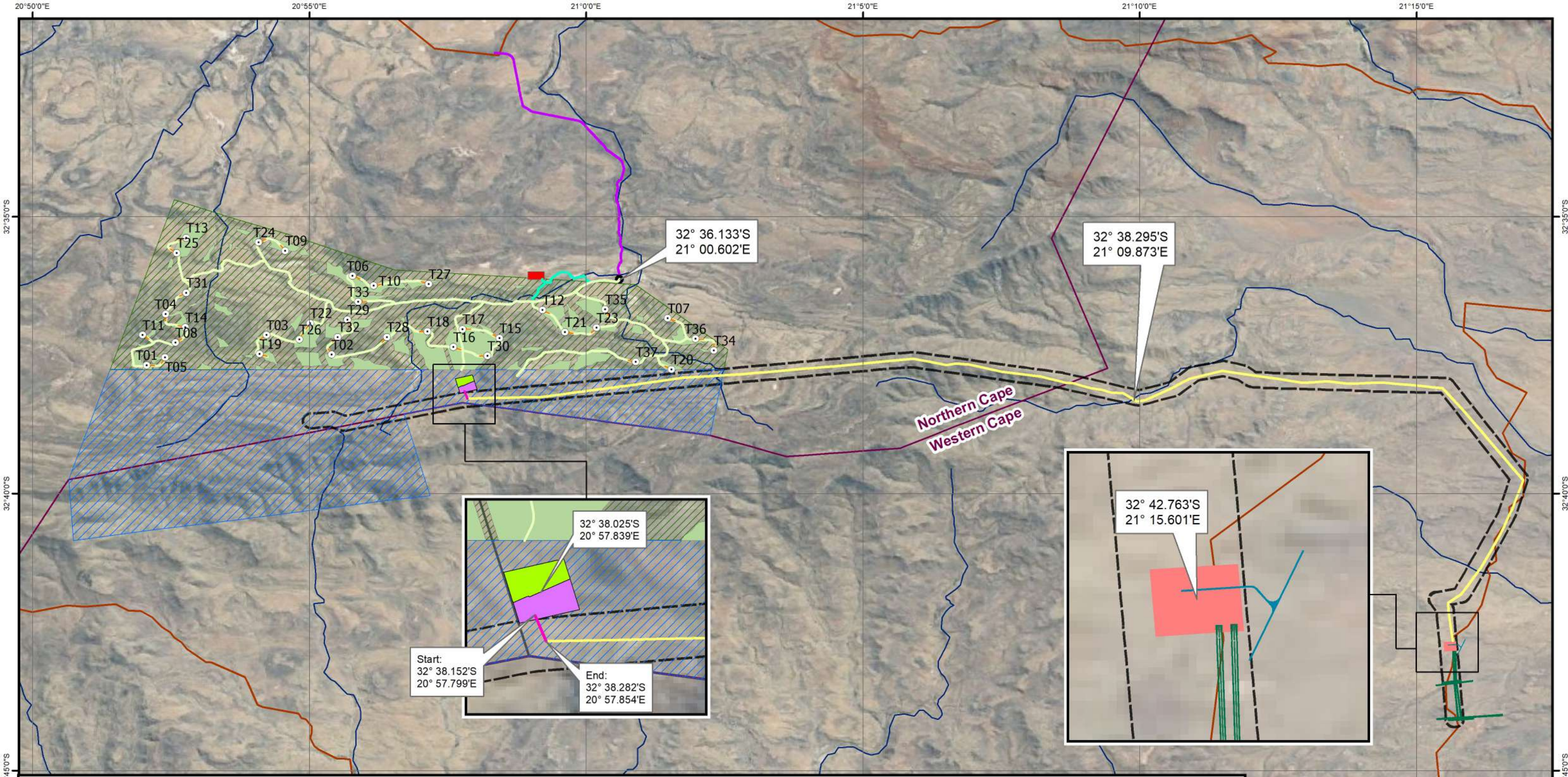
**FINAL LAYOUT MAP OVERLAIN ON THE CRITICAL BIODIVERSITY AREAS MAP**

**Proposed Rietrug Wind Energy Facilities, Grid and associated infrastructure.**

Province	Northern Cape	Western Cape
District Municipality	Namakwa	Central Karoo
Local Municipality	Karoo Hoogland	Laingsburg

Coordinate System: GCS WGS 1984  
Datum: WGS 1984  
Units: Degree  
Scale: 1:125 000  
Date: December 2022





**Legend**

- Roads
- Rivers (NBA 2018)
- Provincial boundaries

**Project area**

- Authorized Sutherland WEF
- Rietrug Project Area

**Authorized Sutherland Facilities**

- Authorized 132kV Acrux to Koring Gridline (DFFE Ref: 14/12/16/3/3/1/2077)
- Authorized Sutherland 400kV powerlines (DFFE Ref: 14/12/16/3/3/1/2077)
- Authorized Sutherland 500m Grid Corridor (DFFE Ref: 14/12/16/3/3/1/2077)

**Acrux Substation**

**Authorized on-site substation**

- Authorized Switching Station (Eskom) (DFFE Ref: 14/12/16/3/3/1/2457)
- Authorized 33kV/132kV Substation (IPP) (DFFE Ref: 14/12/16/3/3/1/2458)
- Authorized 132kV powerline from the Acrux substation (Eskom, DFFE Ref: 14/12/16/3/3/2457)

**Proposed Rietrug WEF Facilities ( DFFE REF: 12/12/20/1782/1)**

- WEF access road
- Proposed turbine hardstand
- Proposed internal access roads and underground cabling
- Proposed turbine locations
- Rietrug buildable areas

**Batching Plant**

- Batching site
- Batching site access road
- Batching plant access point

**Koring MTS**

- Proposed 400kV MTS site
- Proposed road



Prepared for:  
Nala Environmental Consulting Firm

Prepared by:  
Ecofluence Consulting

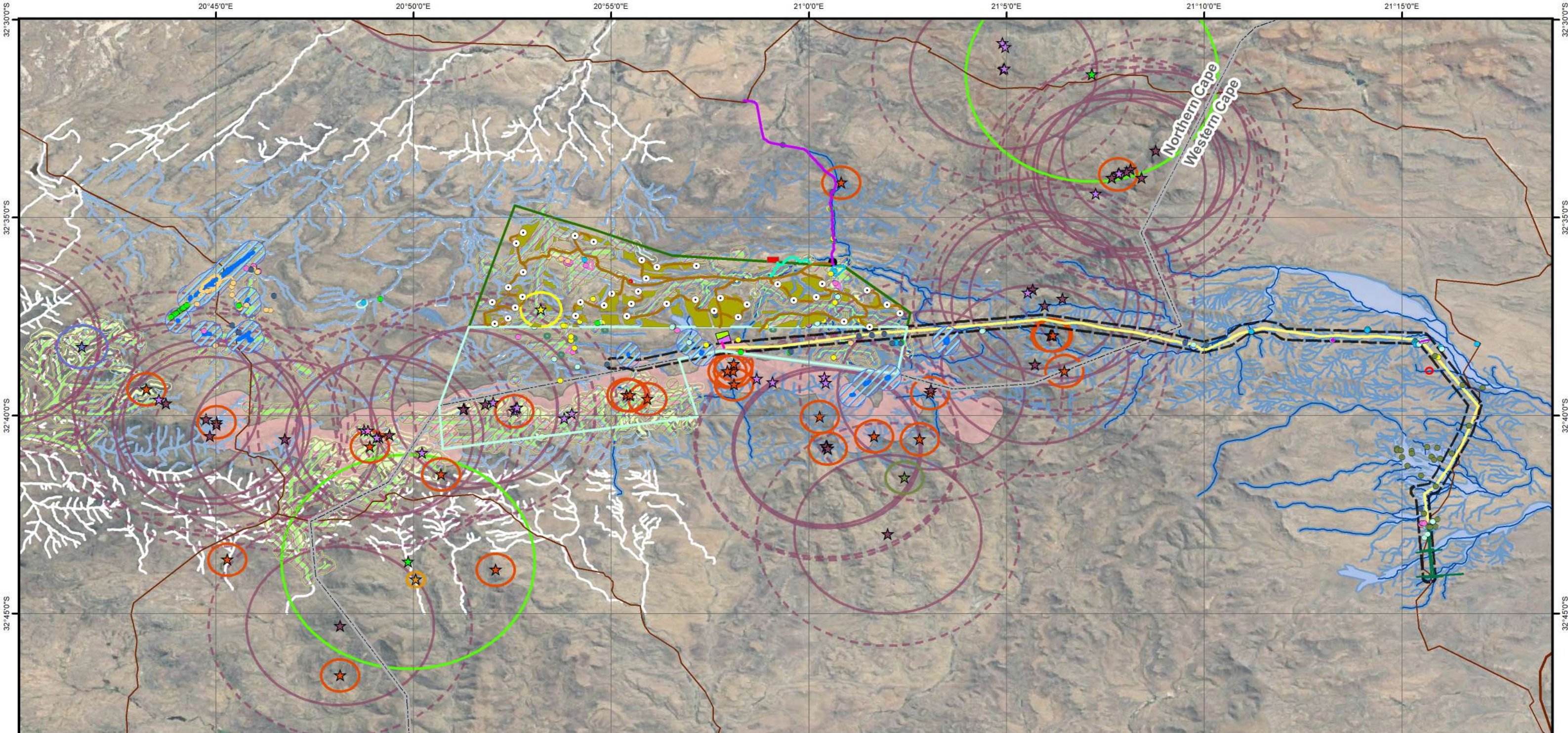
**FINAL LAYOUT MAP**

**Proposed Rietrug Wind Energy Facilities, Grid and associated infrastructure.**

<b>Province</b>	<b>Northern Cape</b>	<b>Western Cape</b>
District Municipality	Namakwa	Central Karoo
Local Municipality	Karoo Hoogland	Laingsburg

Coordinate System: GCS WGS 1984  
Datum: WGS 1984  
Units: Degree  
Scale: 1:125 000  
Date: December 2022





**Legend**

- Roads
- Provincial boundaries
- Project area**
  - Authorised Sutherland WEF
  - Rietrug Project Area
- Authorised Sutherland Facilities**
  - Authorised 132kV Acruz to Koring Gridline (DFFE Ref: 14/12/16/3/3/1/2077)
  - Authorised Sutherland 400kV powerlines (DFFE Ref: 14/12/16/3/3/1/2077)
  - Authorised Sutherland 500m Grid Corridor (DFFE Ref: 14/12/16/3/3/1/2077)
- Acruz Substation**
  - Authorised on-site substation
    - Authorised Switching Station (Eskom) (DFFE Ref: 14/12/16/3/3/1/2457)
    - Authorised 33kV/132kV Substation (IPP) (DFFE Ref: 14/12/16/3/3/1/2458)
    - Authorised 132kV powerline from the Acruz substation (Eskom, DFFE Ref: 14/12/16/3/3/2457)
- Proposed Rietrug WEF Facilities (DFFE REF: 12/12/20/1782/1)**
  - WEF access road
  - Proposed turbine hardstand
  - Proposed internal access roads and underground cabling
  - Proposed turbine locations
  - Rietrug buildable areas
- Batching Plant**
  - Batching site
  - Batching site access road
  - Batching plant access point
- Koring MTS**
  - Proposed 400kV MTS site
  - Proposed road
- Specialist sensitivities**
  - Heritage sensitivity**
    - Palaeontology - No Go
  - Heritage sites**
    - Graded sites**
      - GPA
      - GPB
      - GPC
      - IIIA
      - IIIB
      - IIIC
      - NCW
      - IIIC / GPA-GPB
      - NCW - GPA
    - Graded heritage sites 50m buffers**
      - GPA - Stone wall
      - GPA
      - GPB
      - GPC
      - IIIA
      - IIIB
      - IIIC / GPA-GPB
      - IIIC
  - Aquatic sensitivity**
    - Drainage lines**
      - High - turbine exclusion zones
      - High buffer (100m)
      - Medium - turbine exclusion zones
      - Medium buffer (50m)
    - Wetlands**
      - Wetlands buffer (50m)
      - Regulatory area (500m)
    - Bat sensitivity**
      - High
      - High buffer (200m)
      - Moderate
      - Moderate buffer (150m)
      - Turbine blade length buffer (100m)
  - Avifaunal sensitivity**
    - Nests**
      - African Harrier Hawk
      - Black Harrier
      - Booted Eagle
      - Hamerkop
      - Jackal Buzzard
      - Martial Eagle
      - Pale Chanting Goshawk
      - Verreaux's Eagle
      - White-necked Raven
    - Buffers**
      - African Harrier Hawk buffer (750m)
      - Black Harrier buffer - all infrastructure exclusion zone (800m)
      - Booted Eagle buffer (1km)
      - Jackal Buzzard buffer (750m)
      - Martial Eagle buffer (5km)
      - Pale Chanting Goshawk buffer (350m)
      - Verreaux's Eagle buffer (3.7km)
      - Verreaux's Eagle buffer - medium (5.2km)
      - Escarpment exclusion zone (660m)
      - Drainage turbine exclusion zone (200m)
      - Drainage turbine exclusion zone (50m)



Prepared for:  
Nala Environmental Consulting Firm

Prepared by:  
Ecofluence Consulting

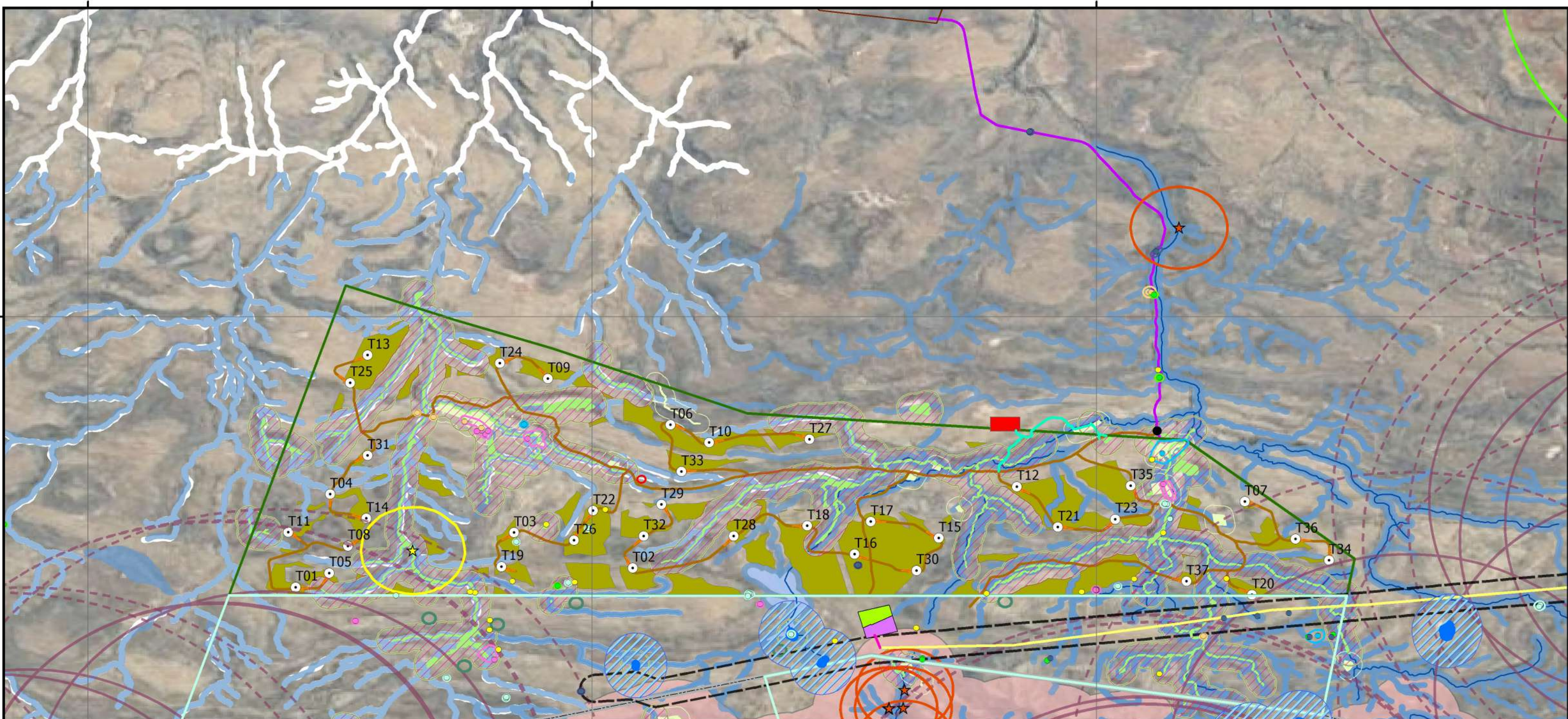
**FINAL LAYOUT MAP OVERLAIN ON SPECIALIST SENSITIVITIES:**

**Proposed Rietrug Wind Energy Facilities, Grid and associated infrastructure.**

Province	Northern Cape	Western Cape
District Municipality	Namakwa	Central Karoo
Local Municipality	Karoo Hoogland	Laingsburg

Coordinate System: GCS WGS 1984  
Datum: WGS 1984  
Units: Degree  
Scale: 1:175 000  
Date: December 2022

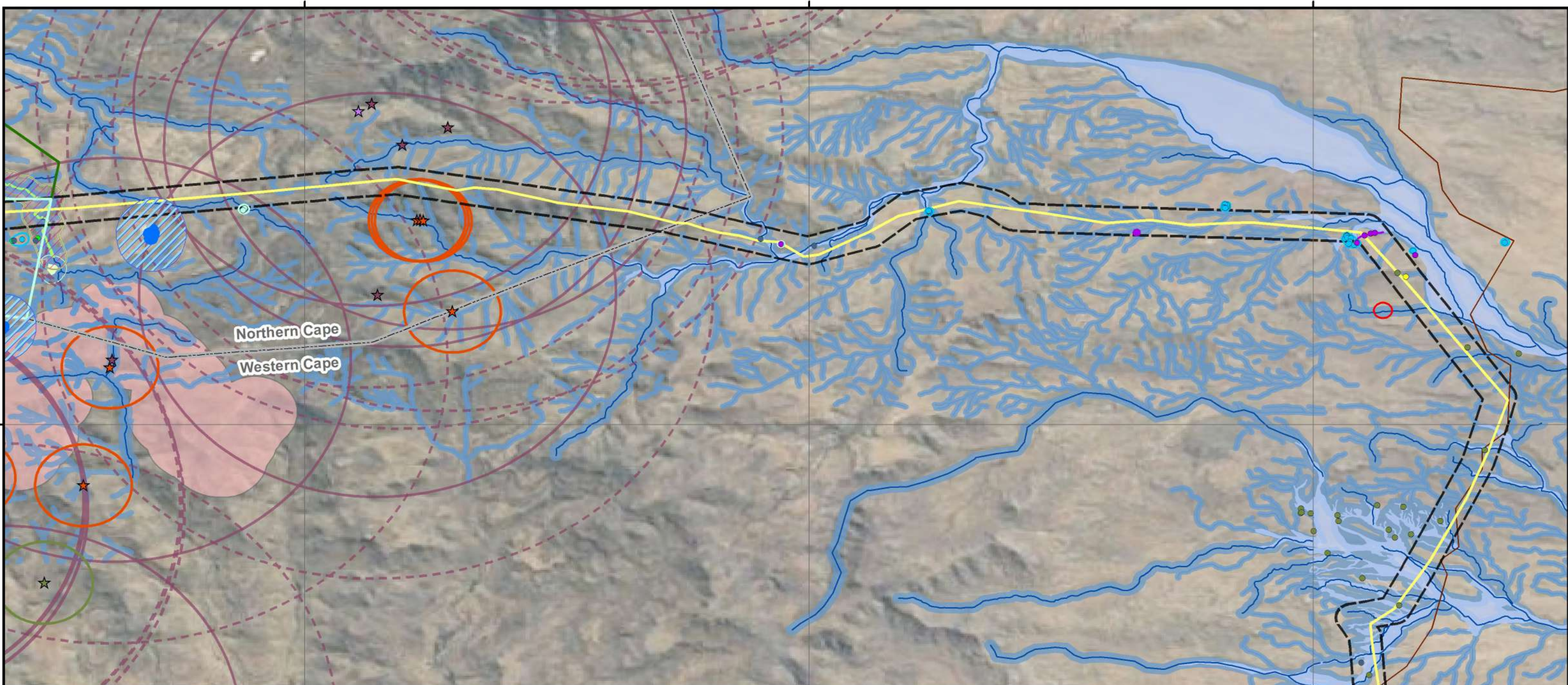




**Legend**

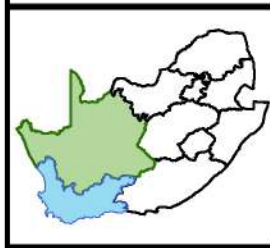
- Roads
- Project area**
  - Authorised Sutherland WEF
  - Rietrug Project Area
- Authorised Sutherland Facilities**
  - Authorised 132kV Acruz to Koring Gridline (DFFE Ref: 14/12/16/3/3/1/2077)
  - Authorised Sutherland 500m Grid Corridor (DFFE Ref: 14/12/16/3/3/1/2077)
- Acruz Substation**
  - Authorised on-site substation
    - Authorised Switching Station (Eskom) (DFFE Ref: 14/12/16/3/3/1/2457)
    - Authorised 33kV/132kV Substation (IPP) (DFFE Ref: 14/12/16/3/3/1/2458)
    - Authorised 132kV powerline from the Acruz substation (Eskom, DFFE Ref: 14/12/16/3/3/2457)
- Proposed Rietrug WEF Facilities (DFFE REF: 12/12/20/1782/1)**
  - WEF access road
  - Proposed turbine hardstand
  - Proposed internal access roads and underground cabling
  - Proposed turbine locations
  - Rietrug buildable areas
- Batching Plant**
  - Batching site
  - Batching site access road
  - Batching plant access point
- Specialist sensitivities**
  - Heritage sensitivity**
    - Palaeontology - No Go
  - Graded sites**
    - GPA
    - GPB
    - GPC
    - IIIA
    - IIIC / GPA-GPB
    - NCW - GPC
  - Graded heritage sites 50m buffers**
    - GPA
    - GPB
    - GPC
    - IIIA
    - IIIC / GPA-GPB
- Aquatic sensitivity**
  - Drainage lines**
    - High - turbine exclusion zones
    - High buffer (100m)
    - Medium - turbine exclusion zones
    - Medium buffer (50m)
  - Wetlands**
    - Wetlands buffer (50m)
    - Regulatory area (500m)
  - Bat sensitivity**
    - High
    - High buffer (200m)
    - Moderate
    - Moderate buffer (150m)
    - Turbine blade length buffer (100m)
- Avifaunal sensitivity**
  - Nests**
    - Black Harrier
    - Jackal Buzzard
    - Verreaux's Eagle
  - Avifaunal buffers**
    - African Harrier Hawk buffer (750m)
    - Black Harrier buffer - all infrastructure exclusion zone (800m)
    - Jackal Buzzard buffer (750m)
    - Martial Eagle buffer (5km)
    - Verreaux's Eagle buffer (3.7km)
    - Verreaux's Eagle buffer - medium (5.2km)
    - Escarpment exclusion zone (660m)
    - Drainage turbine exclusion zone (200m)
    - Drainage turbine exclusion zone (50m)

	<b>Prepared for:</b> Nala Environmental Consulting Firm 	<b>Prepared by:</b> Ecofluence Consulting 	<b>FINAL LAYOUT MAP OVERLAIN ON SPECIALIST SENSITIVITIES: WEF section</b>  <b>Proposed Rietrug Wind Energy Facilities, Grid and associated infrastructure.</b>	<table border="1"> <tr> <td><b>Province</b></td> <td>Northern Cape</td> <td>Western Cape</td> </tr> <tr> <td><b>District Municipality</b></td> <td>Namakwa</td> <td>Central Karoo</td> </tr> <tr> <td><b>Local Municipality</b></td> <td>Karoo Hoogland</td> <td>Laingsburg</td> </tr> </table>	<b>Province</b>	Northern Cape	Western Cape	<b>District Municipality</b>	Namakwa	Central Karoo	<b>Local Municipality</b>	Karoo Hoogland	Laingsburg	<p>Coordinate System: GCS WGS 1984          Datum: WGS 1984          Units: Degree          Scale: 1:70 000          Date: December 2022</p>	
	<b>Province</b>	Northern Cape	Western Cape												
<b>District Municipality</b>	Namakwa	Central Karoo													
<b>Local Municipality</b>	Karoo Hoogland	Laingsburg													



**Legend**

- Roads
- Provincial boundaries
- Project area**
  - Sutherland project area
  - Authorised Rietrug WEF
- Authorised Sutherland Facilities**
  - Authorised 132kV Acruz to Koring Gridline (DFFE Ref: 14/12/16/3/3/1/2077)
  - Authorised Sutherland 400kV powerlines (DFFE Ref: 14/12/16/3/3/1/2077)
  - Authorised Sutherland 500m Grid Corridor (DFFE Ref: 14/12/16/3/3/1/2077)
- Koring MTS**
  - Proposed 400kV MTS site
  - Proposed road
- Specialist sensitivities**
  - Heritage sensitivity**
    - Palaeontology - No Go
  - Graded sites**
    - GPB
    - GPC
    - IIIA
    - IIIB
    - IIIC
    - NCW
    - IIIC / GPA-GPB
    - NCW - GPC
  - Graded heritage sites 50m buffers**
    - IIIB
    - IIIC / GPA-GPB
    - IIIA
    - IIIC
- Aquatic sensitivity**
  - Drainage lines**
    - High - turbine exclusion zones
    - High buffer (100m)
    - Medium - turbine exclusion zones
    - Medium buffer (50m)
  - Wetlands**
    - Wetlands buffer (50m)
    - Regulatory area (500m)
  - Bat sensitivity**
    - High
    - High buffer (200m)
    - Moderate
    - Moderate buffer (150m)
- Avifaunal sensitivity**
  - Nests**
    - African Harrier Hawk
    - Jackal Buzzard
    - Verreaux's Eagle
    - White-necked Raven
  - Avifaunal buffers**
    - African Harrier Hawk buffer (750m)
    - Jackal Buzzard buffer (750m)
    - Verreaux's Eagle buffer (3.7km)
    - Verreaux's Eagle buffer - medium (5.2km)
    - Escarpment exclusion zone (660m)
    - Drainage turbine exclusion zone (200m)



Prepared for:  
Nala Environmental Consulting Firm

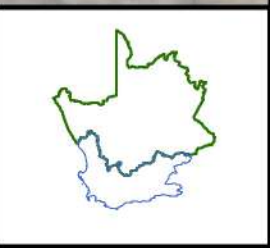
Prepared by:  
Ecofluence Consulting

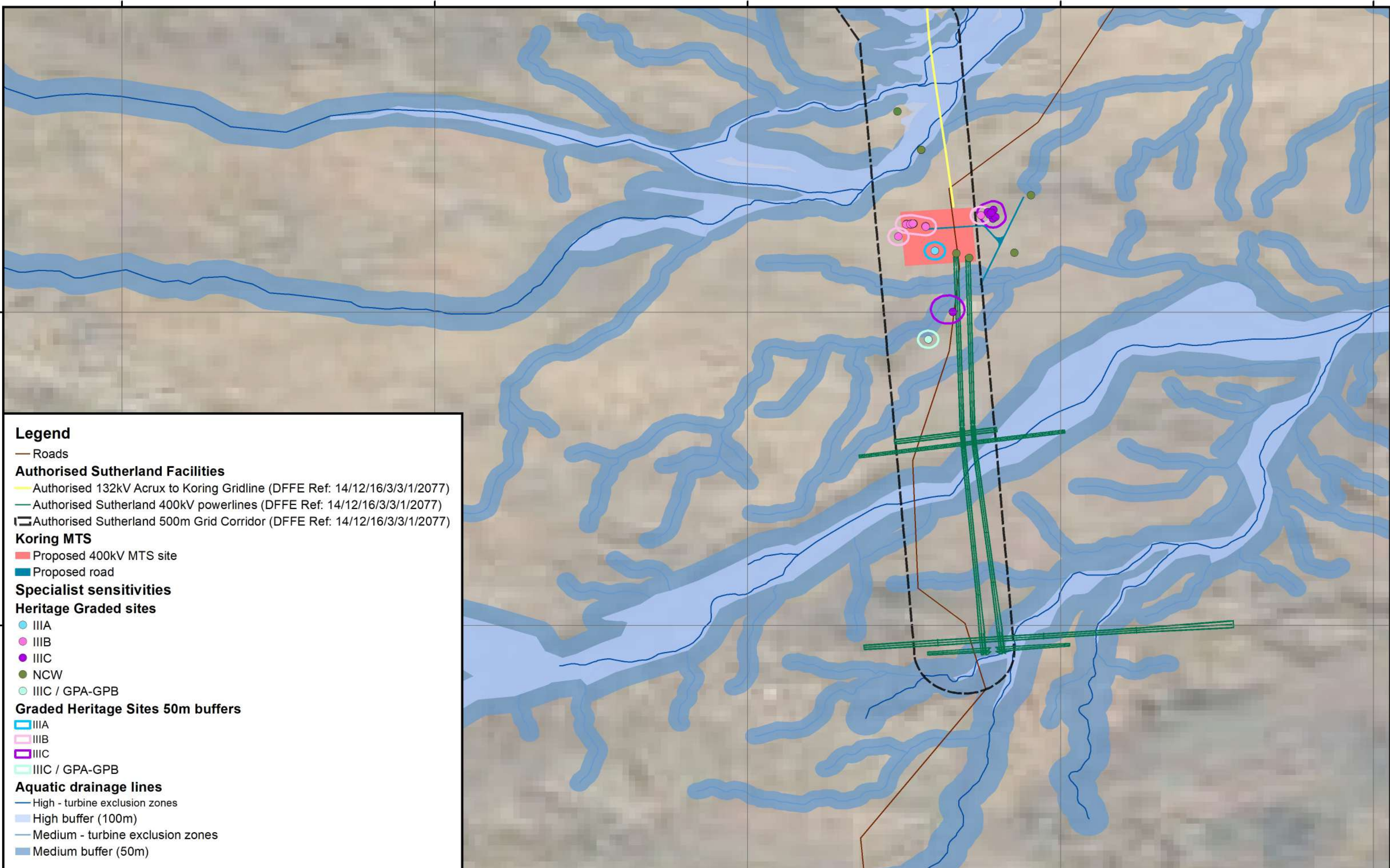
**FINAL LAYOUT MAP OVERLAIN ON SPECIALIST SENSITIVITIES: Grid section**

**Proposed Sutherland and Rietrug Wind Energy Facilities, Grid and associated infrastructure.**

Province	Northern Cape	Western Cape
District Municipality	Namakwa	Central Karoo
Local Municipality	Karoo Hoogland	Laingsburg

Coordinate System: GCS WGS 1984  
Datum: WGS 1984  
Units: Degree  
Scale: 1:70 000  
Date: December 2022





**Legend**

- Roads
- Authorised Sutherland Facilities**
  - Authorised 132kV AcruX to Koring Gridline (DFFE Ref: 14/12/16/3/3/1/2077)
  - Authorised Sutherland 400kV powerlines (DFFE Ref: 14/12/16/3/3/1/2077)
  - Authorised Sutherland 500m Grid Corridor (DFFE Ref: 14/12/16/3/3/1/2077)
- Koring MTS**
  - Proposed 400kV MTS site
  - Proposed road
- Specialist sensitivities**
- Heritage Graded sites**
  - IIIA
  - IIIB
  - IIIC
  - NCW
  - IIIC / GPA-GPB
- Graded Heritage Sites 50m buffers**
  - IIIA
  - IIIB
  - IIIC
  - IIIC / GPA-GPB
- Aquatic drainage lines**
  - High - turbine exclusion zones
  - High buffer (100m)
  - Medium - turbine exclusion zones
  - Medium buffer (50m)

	<p>Prepared for: Nala Environmental Consulting Firm</p>	<p>Prepared by: Ecofluence Consulting</p>	<p><b>FINAL LAYOUT MAP OVERLAIN ON SPECIALIST SENSITIVITIES: Koring MTS</b></p> <p><b>Proposed Sutherland and Rietrug Wind Energy Facilities, Grid and associated infrastructure.</b></p>	<table border="1"> <thead> <tr> <th>Province</th> <th>Northern Cape</th> <th>Western Cape</th> </tr> </thead> <tbody> <tr> <td>District Municipality</td> <td>Namakwa</td> <td>Central Karoo</td> </tr> <tr> <td>Local Municipality</td> <td>Karoo Hoogland</td> <td>Laingsburg</td> </tr> </tbody> </table>	Province	Northern Cape	Western Cape	District Municipality	Namakwa	Central Karoo	Local Municipality	Karoo Hoogland	Laingsburg	<p>Coordinate System: GCS WGS 1984 Datum: WGS 1984 Units: Degree Scale: 1:20 000 Date: December 2022</p>	
Province	Northern Cape	Western Cape													
District Municipality	Namakwa	Central Karoo													
Local Municipality	Karoo Hoogland	Laingsburg													