

- Farm Portions
- Existing Eskom Substation
- Substation Compound Option A
- Eskom Existing Transmission Lines
- Roads, Hardstands and Substations
- Grid Option C

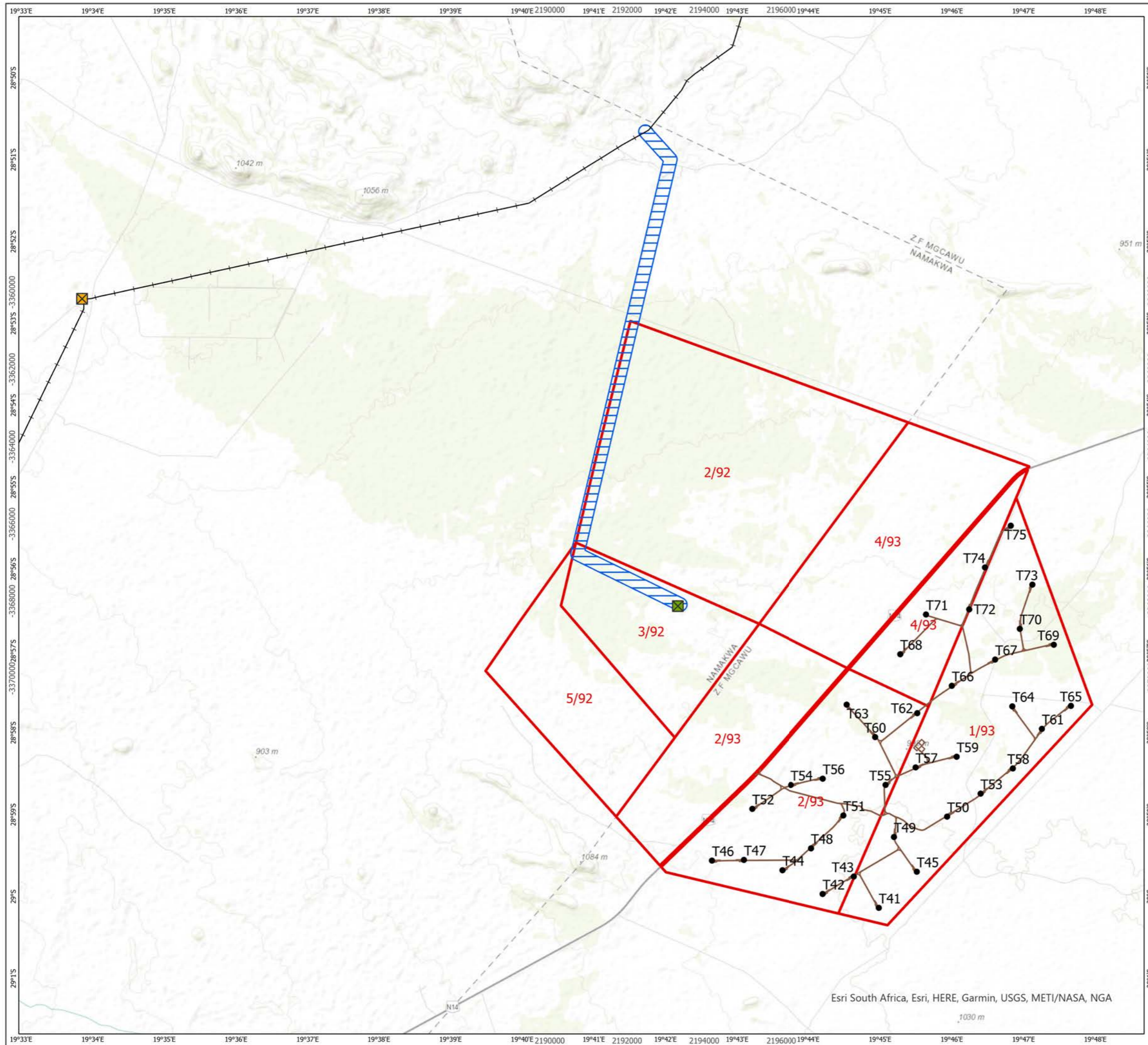


| | |
|-----------------|-------------------|
| Produced By: SC | Ref: 3944-GIS-026 |
| Checked By: AA | Date: 25/10/2021 |

Authorised Paulputs Layout
Figure 1

Paulputs North WEF
Amendment Report

Esri South Africa, Esri, HERE, Garmin, USGS, METI/NASA, NGA



- Farm Portions
- Turbine Layout
- Existing Eskom Substation
- Substation Compound Option A
- Existing Eskom Transmission Lines
- Roads, Hardstands and Substations
- Grid Option C

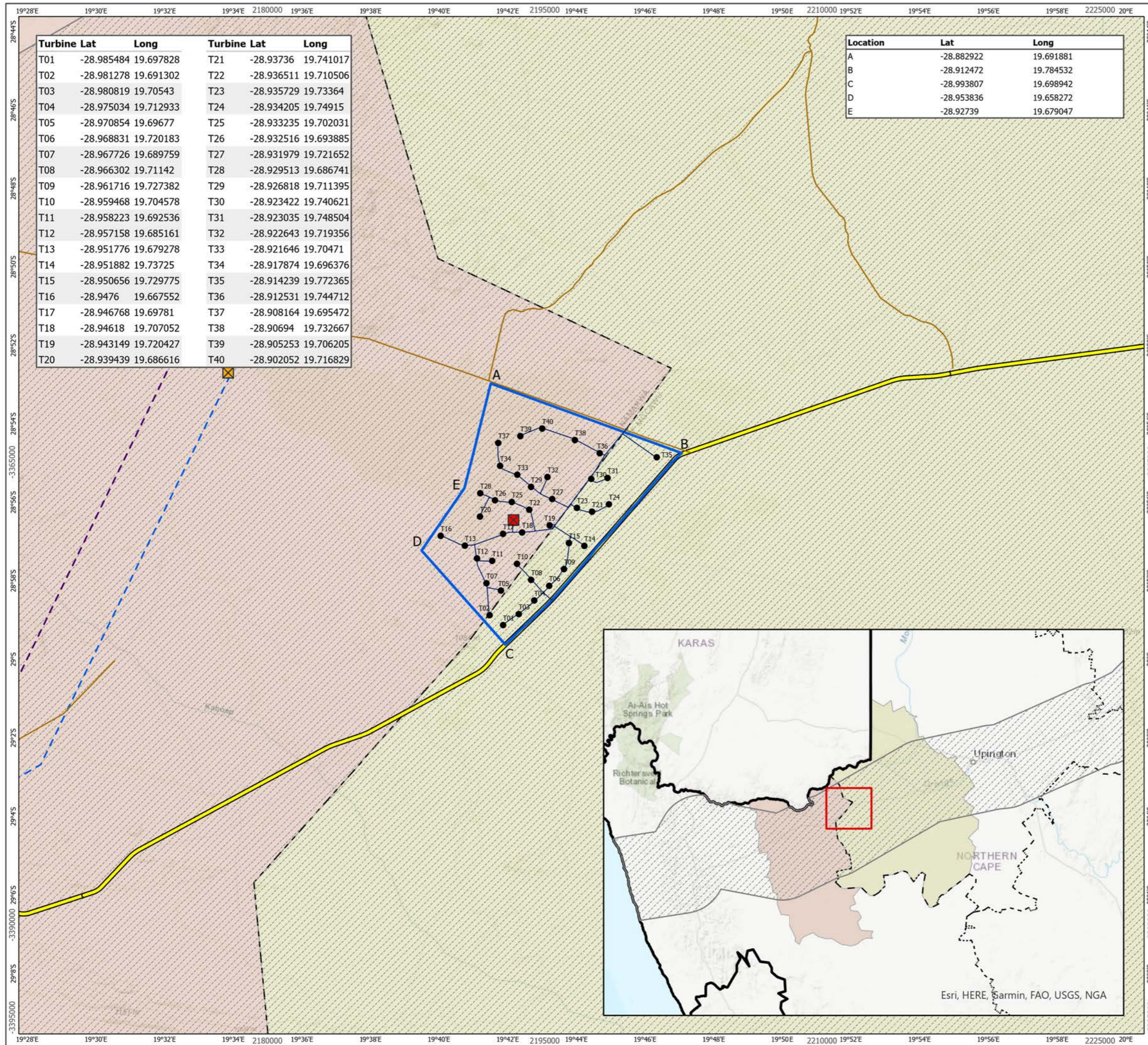


| | |
|-----------------|-------------------|
| Produced By: SC | Ref: 3944-GIS-020 |
| Checked By: AA | Date: 25/10/2021 |

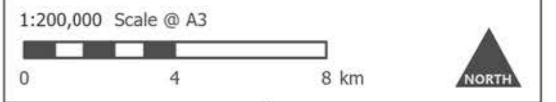
Authorised Paulputs Layout
Figure 1

**Paulputs South WEF
Amendment Report**

Esri South Africa, Esri, HERE, Garmin, USGS, METI/NASA, NGA



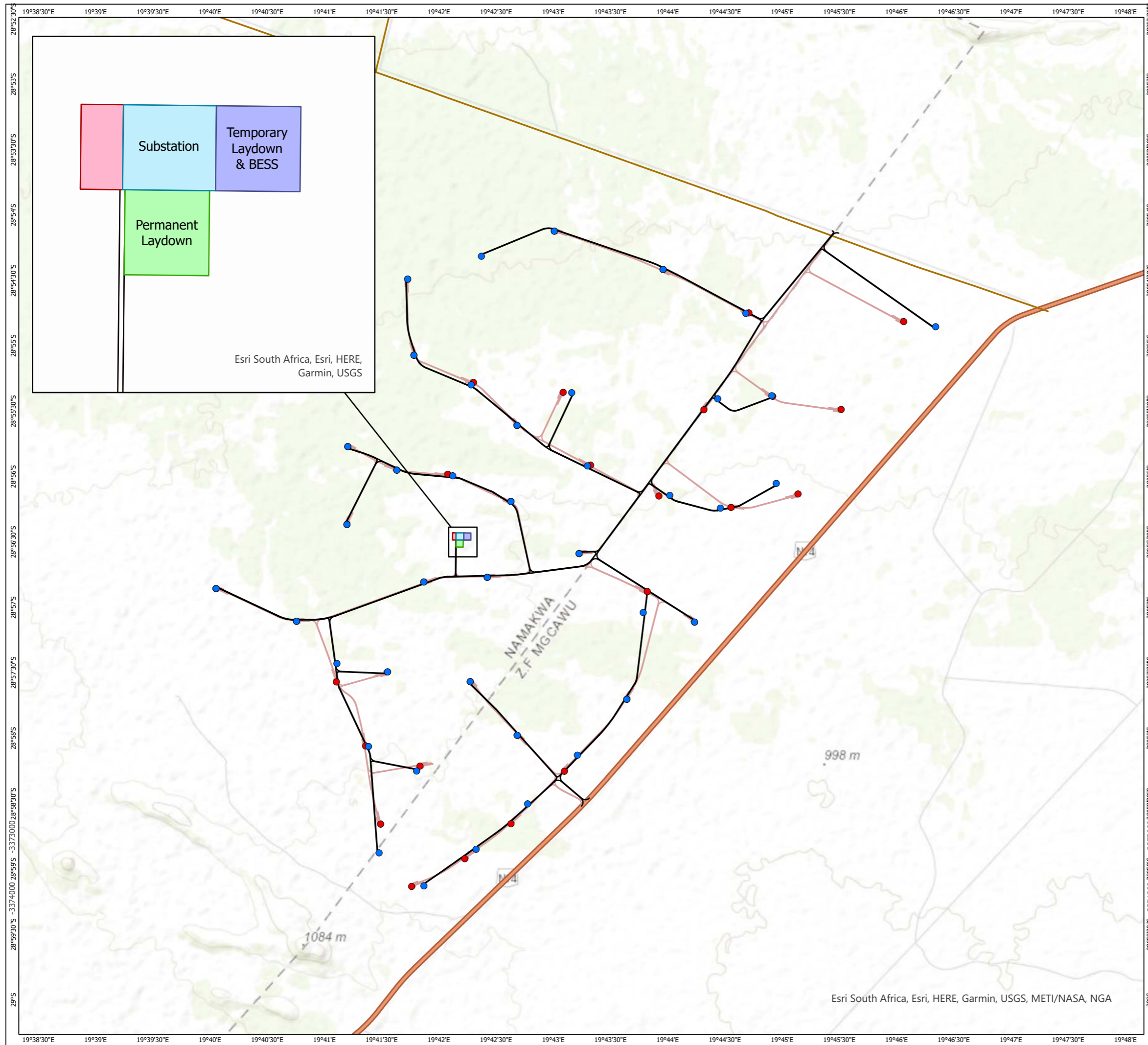
- Paulputs North WEF**
- Proposed Paulputs North WEF Site
 - Paulputs North WTG
 - Approved Substation and Laydown Yards
 - Paulputs North Internal Roads
- Eskom Infrastructure**
- Existing Eskom Substation
 - Aggeneis-Paulputs 2nd 220 kV line
 - Aggeneis-Paulputs 1st 220kV Line
 - Aggeneis-Paulputs 2nd 220 kV line
- Existing Roads**
- N14 Highway
 - R358
 - Unclassified Road
- Boundaries**
- Kai Garib
 - Khâi-Ma
 - Northern Corridor
 - Provincial
 - District Municipality



Produced By: SC Ref: 3944-GIS-027
 Checked By: AA Date: 25/10/2021

Proposed Amendment Locality
Figure 2

Paulputs North WEF
Amendment Report



- Paulputs North WTG
- Approved PWEF WTG
- Paulputs North Internal Roads
- Approved PWEF Hardstandings, Roads and Substation
- Office Laydown
- Permanent Laydown
- Substation
- Temporary Laydown & BESS
- N14 Highway
- R358
- Unclassified Road

1:60,000 Scale @ A3



Produced By: SC

Ref: 3944-GIS-028

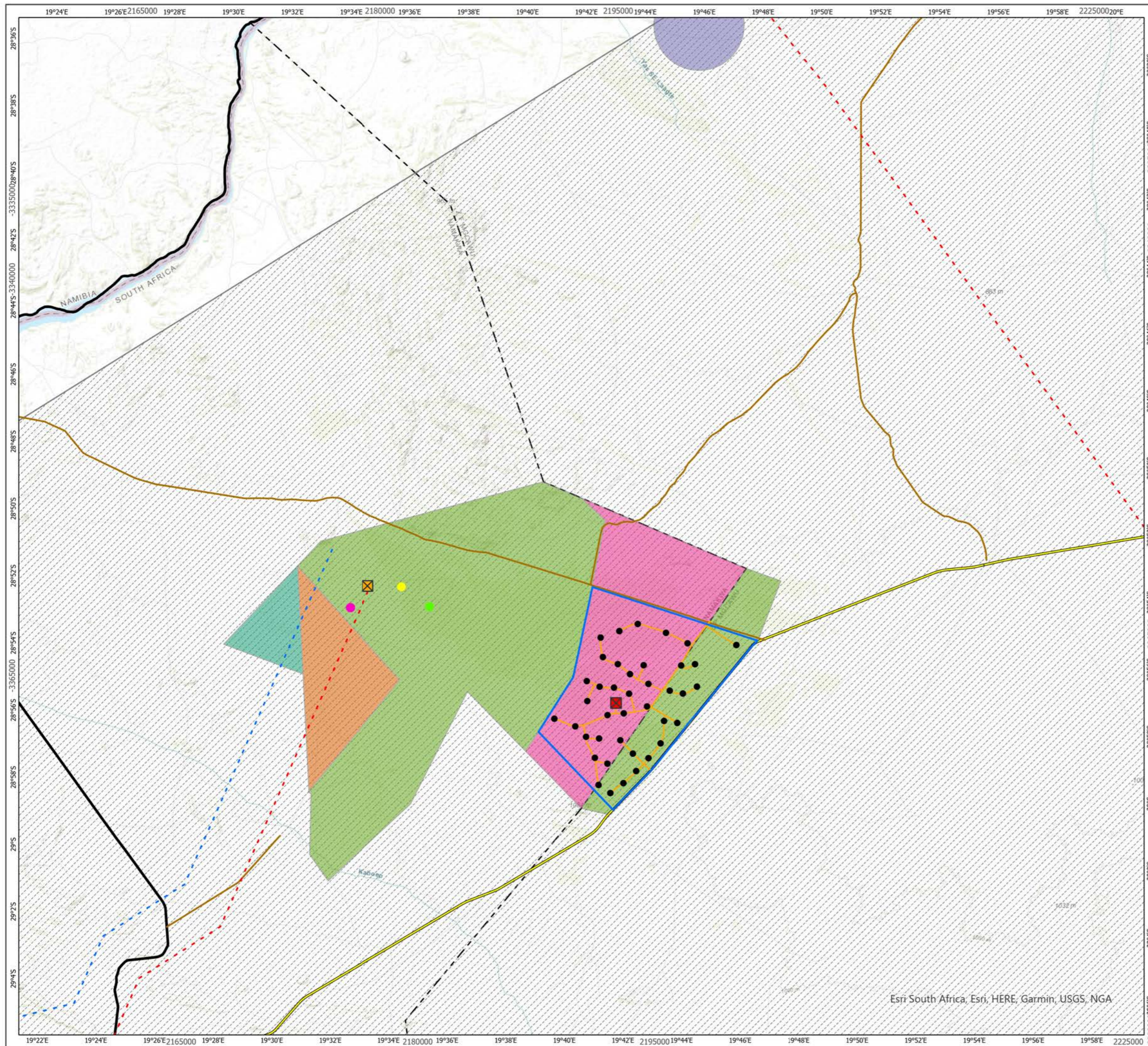
Checked By: AA

Date: 02/11/2021

Proposed Amendment Layout
Figure 3

Paulputs North WEF
Amendment Report

Esri South Africa, Esri, HERE, Garmin, USGS, METI/NASA, NGA



Paulputs North WEF

- Proposed Paulputs North WEF Site
- Paulputs North WTG
- Paulputs North Internal Roads
- Approved Substation and Laydown Yards

Existing Roads

- N14 Highway
- R358
- Unclassified Road

Eskom Infrastructure

- Existing Eskom Substation
- Existing Eskom Transmission Lines
- Planned Eskom Transmission Lines

Constructed REEA

- KaXu Solar One
- Konkoonsies 1 SEF
- Xina Solar One

Proposed REEA

- Proposed 100MW solar PV Paulputs PV1
- Proposed 100MW solar PV Paulputs PV2
- Proposed 75MW Khoi-Sun Solar
- Proposed Solar Project
- Proposed 300 MW Paulputs WEF

Boundaries

- Northern Corridor
- Northern Cape Province
- District Municipality

1:204,471 Scale @ A3



Produced By: SC

Ref: 3944-GIS-029

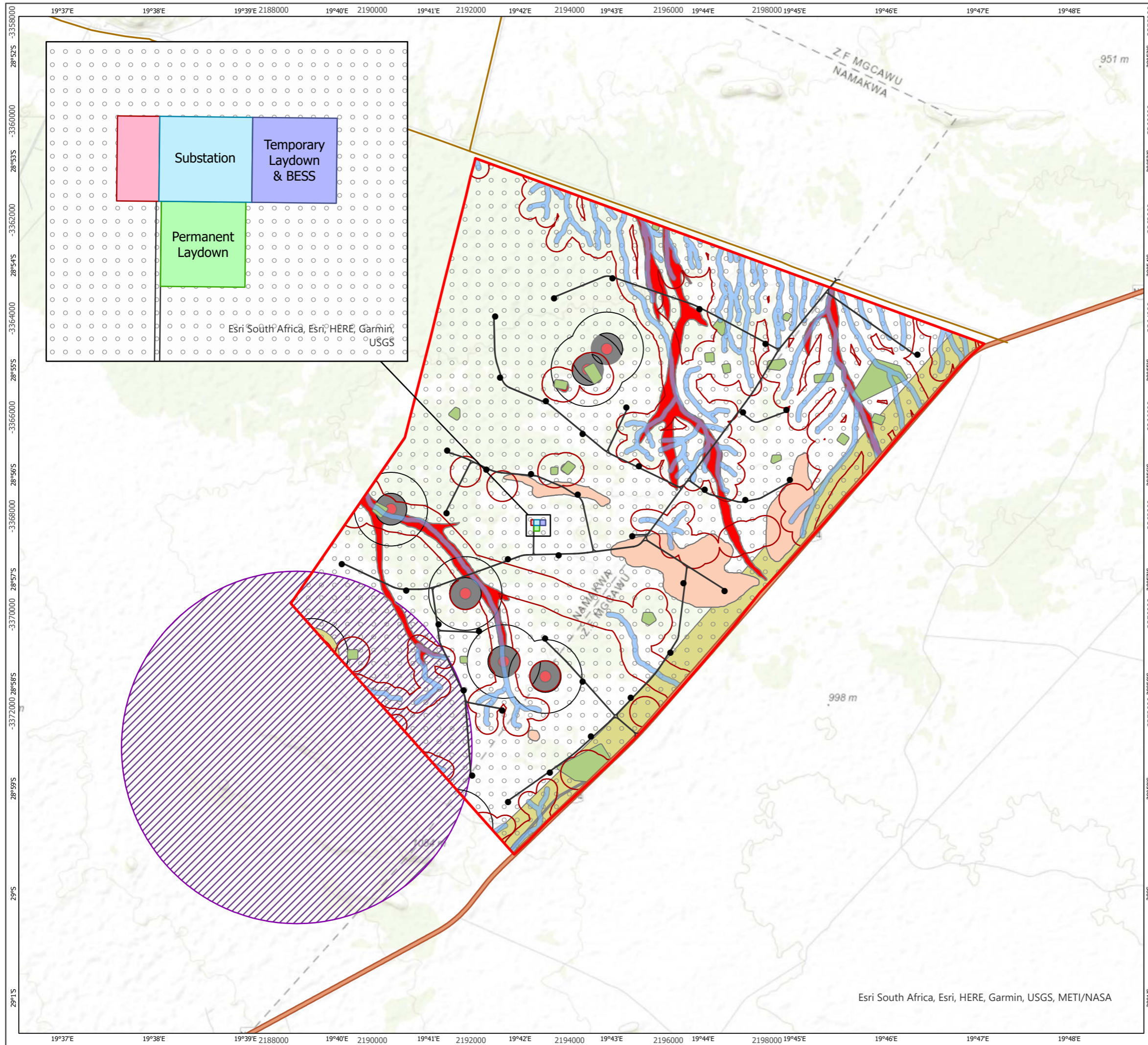
Checked By: AA

Date: 25/10/2021

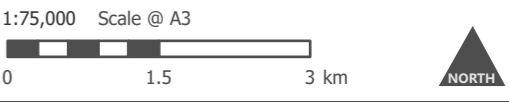
Renewable Energy Developments within 35 km
Figure 4

Paulputs North WEF Amendment Report

Esri South Africa, Esri, HERE, Garmin, USGS, NGA

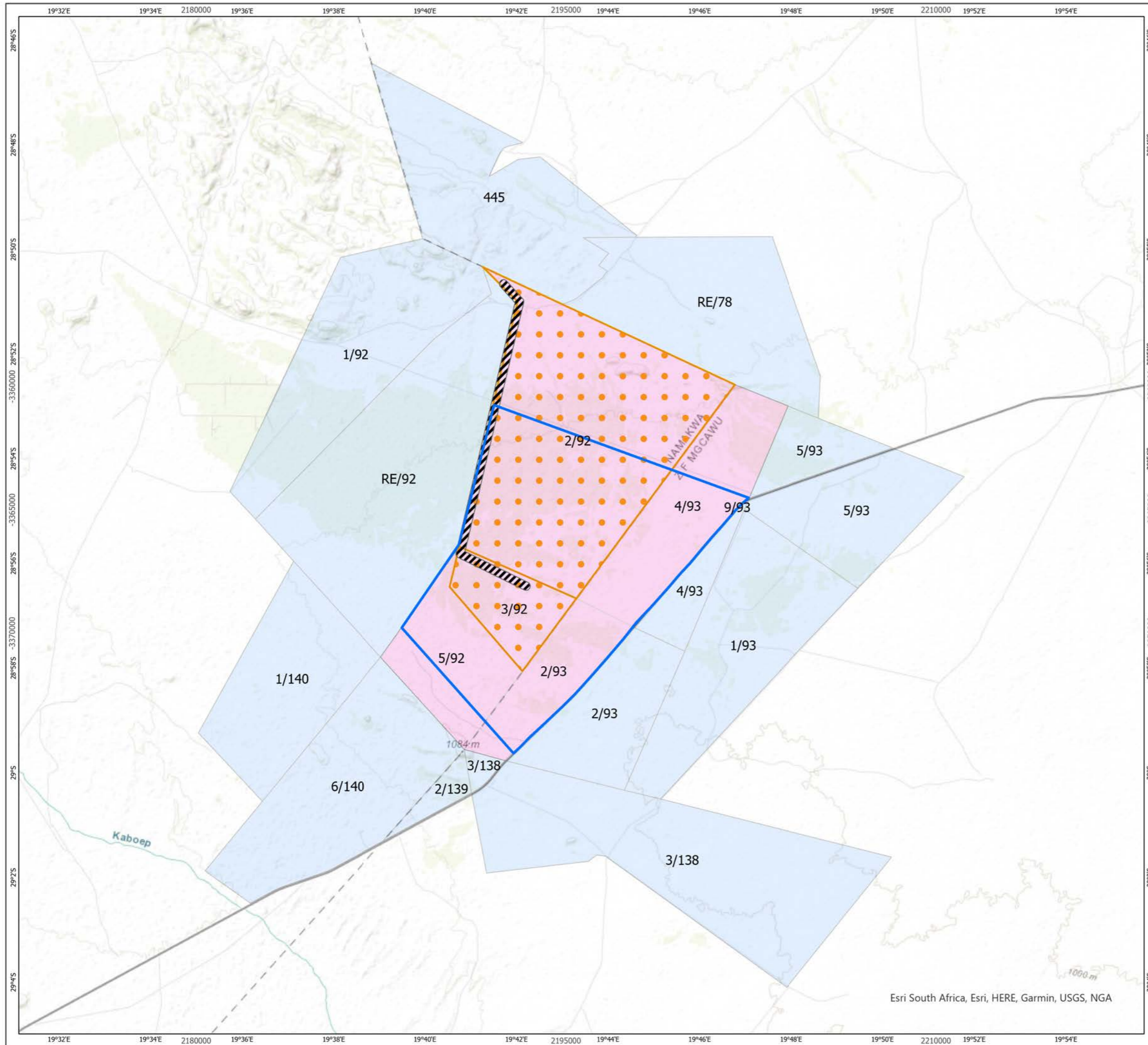


- Paulputs North WEF**
- Paulputs North WEF Site
 - Amended WTG Layout
 - Amended Internal Roads
 - Office Laydown
 - Permanent Laydown
 - Substation
 - Temporary Laydown & BESS
- Eskom Infrastructure**
- Eskom Paulputs Substation
 - Existing Eskom Transmission Lines
 - Planned Eskom Transmission Lines
 - N14 Highway
 - R358
 - Unclassified Road
- Paulputs North Site Sensitivity**
- Drainage Buffer 45m
 - Bat Buffer 110m Blade
 - Heritage Sensitivity Medium
 - Noise Sensitivity High
 - Noise Sensitivity Medium
 - Noise - No Go
 - Ecological Sensitivity High
 - Ecological Sensitivity Low
 - Ecological Sensitivity Medium
 - Visual Sensitivity High
 - Avifauna Buffer 110m Blade



| | |
|-----------------|-------------------|
| Produced By: SC | Ref: 3944-GIS-030 |
| Checked By: AA | Date: 02/11/2021 |

Environmental Sensitivity Map
Figure 5



- Paulputs North WEF Site
- Approved Paulputs WEF Corridor
- Directly Affected Landowners WEF
- Directly Affected Landowners Grid
- Indirectly Affected Landowners



| | |
|-----------------|-------------------|
| Produced By: SC | Ref: 3944-GIS-031 |
| Checked By: AA | Date: 25/10/2021 |

Landowners Map
Figure 6

**Paulputs North WEF
Amendment Report**

Esri South Africa, Esri, HERE, Garmin, USGS, NGA