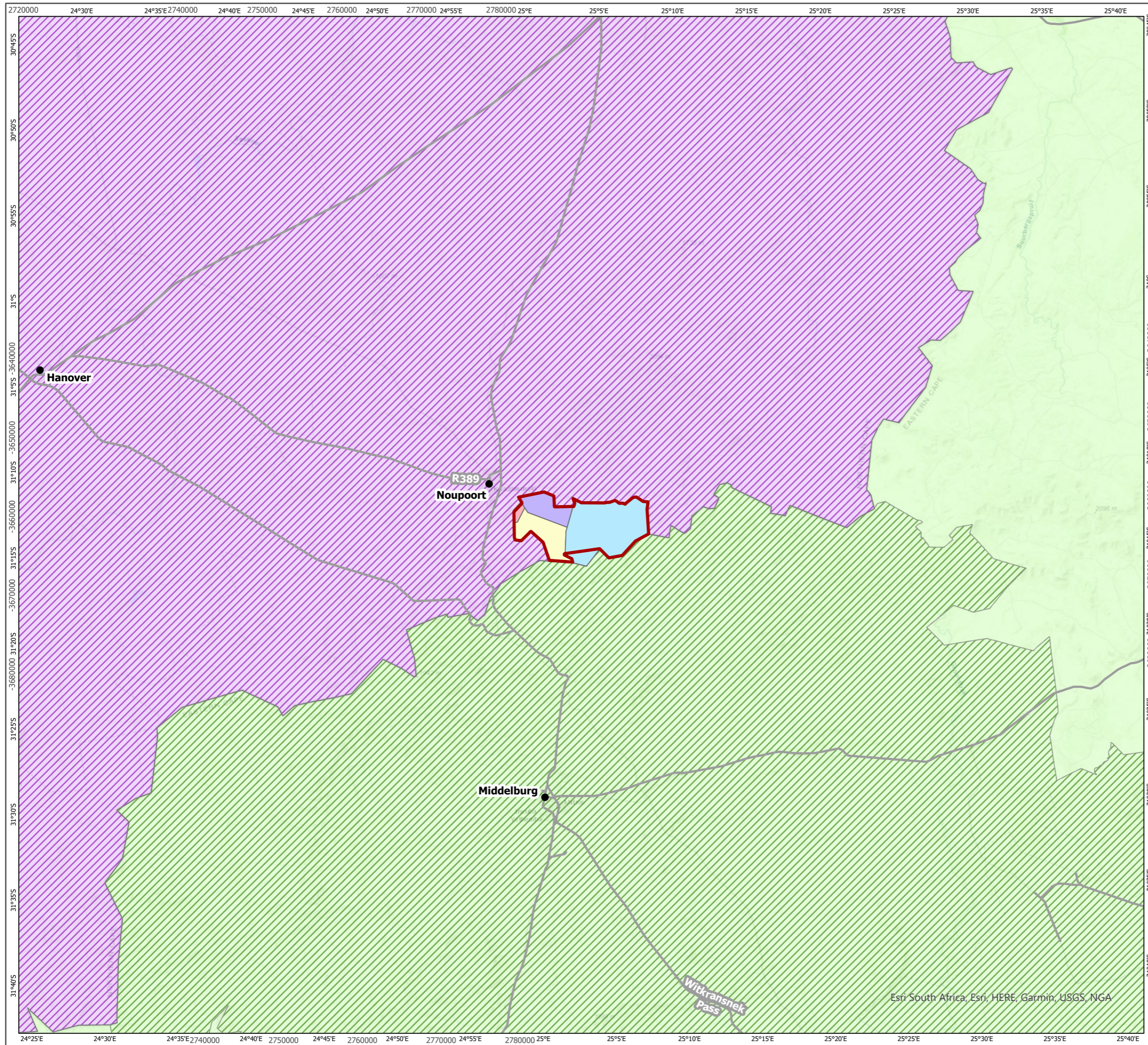


APPENDIX A: FIGURES



San Kraal Site Boundary

Farm Portions

- 15/182 - Umsobomvu Municipality - Hartebeeshoek
- 3/182 - Umsobomvu Municipality - Hartebeeshoek
- 46/182 - Umsobomvu Municipality - Hartebeeshoek
- RE/181 - Taljaard - Holbrook

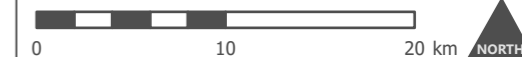
Provinces

- Eastern Cape
- Northern Cape

District Municipalities

- Chris Hani
- Pixley ka Seme

1:400,000 Scale @ A3

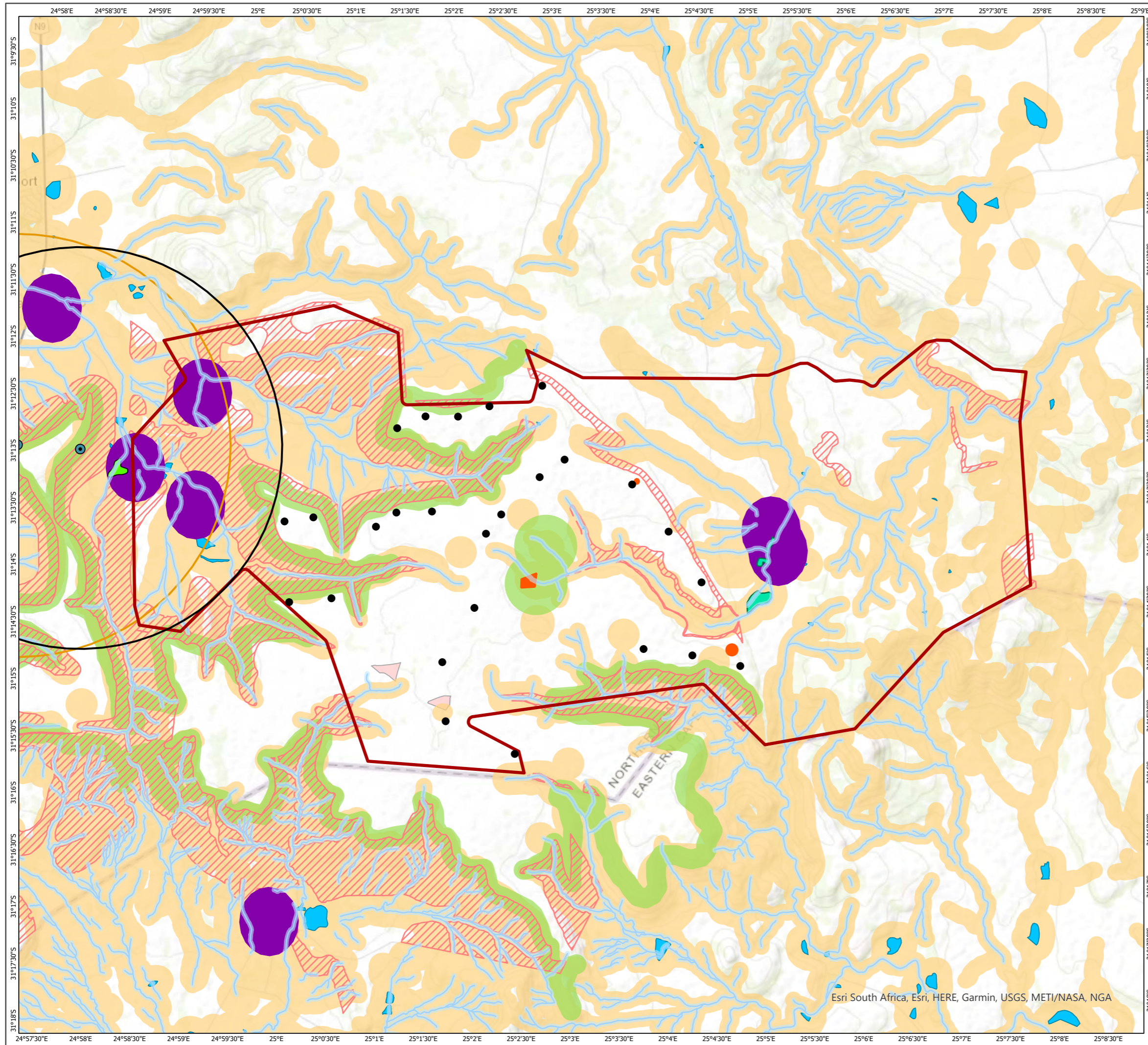


Produced By: SW	Ref: 3329-REP-050
Checked By: SC	Date: 08/02/2022

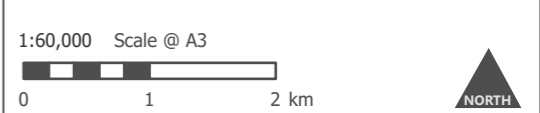
Site Location
Figure 1

San Kraal WEF
Final EMPr

Esri South Africa, Esri, HERE, Garmin, USGS, NGA



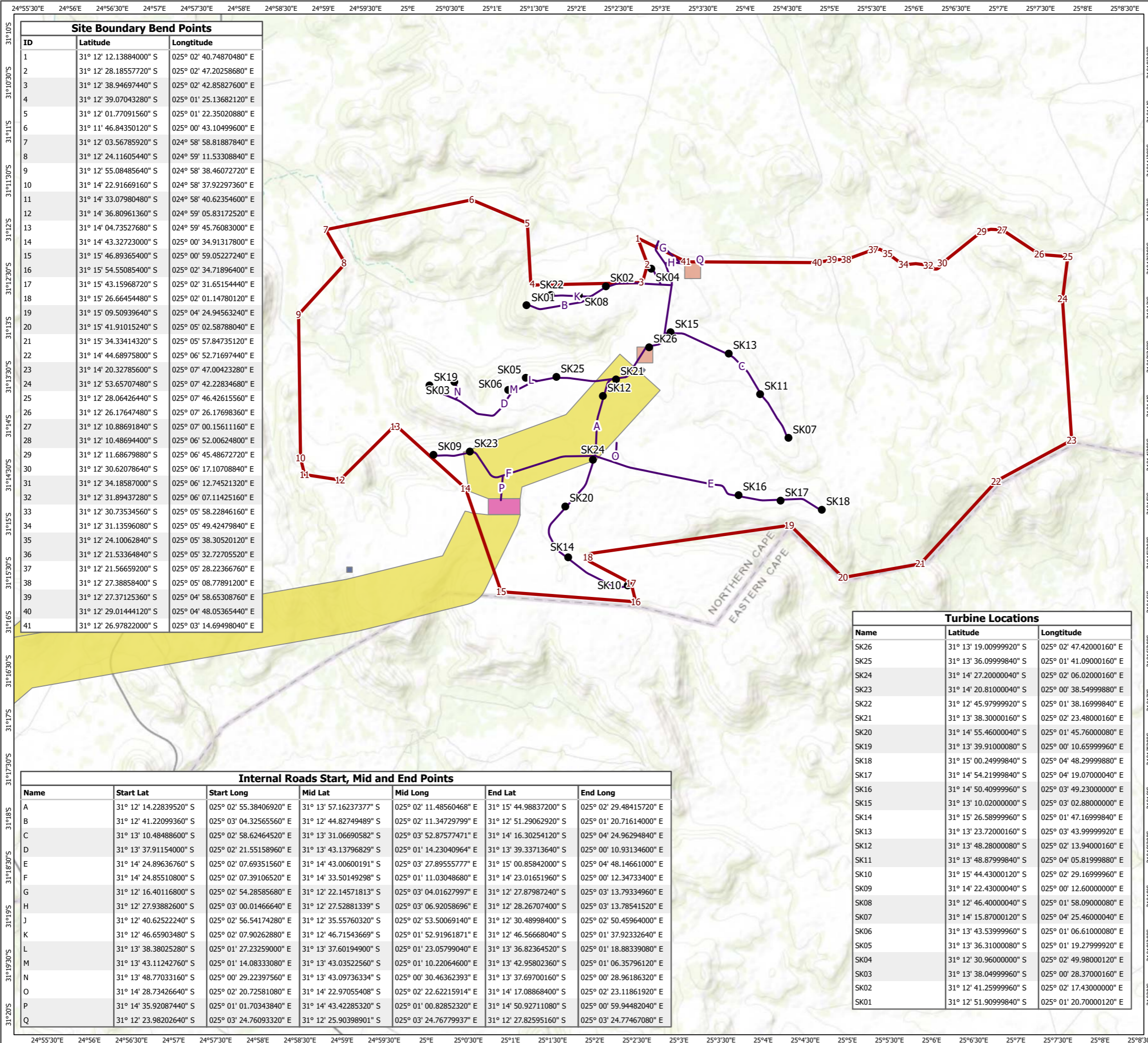
- San Kraal Site Boundary
- Turbine Locations
- No-Go Areas (Very High Sensitivity)
- Watercourse 32m buffer
- VE Nest Site
- Cultural Heritage No-Go Area
- No turbines but other infrastructure permitted
- Water Courses
- Waterbodies and wetlands
- 3.4 km buffer of VE Nest Site
- 500m Noise Buffers
- Hartebeesthoek Geology
- Ecology High Sensitivity Areas
- Bat no go areas for Turbines
- Avifaunal Sensitivity
- Visual Sensitivity Areas (Turbines and other infrastructure permitted)
- Medium-High
- 3.2 km buffer of VE Nest - construction subject to proactive mitigation



Produced By: SW	Ref: 3329-REP-051
Checked By: SW	Date: 08/02/2022

Environmental Sensitivity Map
Figure 2

San Kraal WEF
Final EMP



Site Boundary Bend Points		
ID	Latitude	Longitude
1	31° 12' 12.13884000" S	025° 02' 40.74870480" E
2	31° 12' 28.18557720" S	025° 02' 47.20258680" E
3	31° 12' 38.94697440" S	025° 02' 42.85827600" E
4	31° 12' 39.07043280" S	025° 01' 25.13682120" E
5	31° 12' 01.77091560" S	025° 01' 22.35020880" E
6	31° 11' 46.84350120" S	025° 00' 43.10499600" E
7	31° 12' 03.56785920" S	024° 58' 58.81887840" E
8	31° 12' 24.11605440" S	024° 59' 11.53308840" E
9	31° 12' 55.08485640" S	024° 58' 38.46072720" E
10	31° 14' 22.91669160" S	024° 58' 37.92297360" E
11	31° 14' 33.07980480" S	024° 58' 40.62354600" E
12	31° 14' 36.80961360" S	024° 59' 05.83172520" E
13	31° 14' 04.73527680" S	024° 59' 45.76083000" E
14	31° 14' 43.32723000" S	025° 00' 34.91317800" E
15	31° 15' 46.89365400" S	025° 00' 59.05227240" E
16	31° 15' 54.55085400" S	025° 02' 34.71896400" E
17	31° 15' 43.15968720" S	025° 02' 31.65154440" E
18	31° 15' 26.66454480" S	025° 02' 01.14780120" E
19	31° 15' 09.50939640" S	025° 04' 24.94563240" E
20	31° 15' 41.91015240" S	025° 05' 02.58788040" E
21	31° 15' 34.33414320" S	025° 05' 57.84735120" E
22	31° 14' 44.68975800" S	025° 06' 52.71697440" E
23	31° 14' 20.32785600" S	025° 07' 47.00423280" E
24	31° 12' 53.65707480" S	025° 07' 42.22834680" E
25	31° 12' 28.06426440" S	025° 07' 46.42615560" E
26	31° 12' 26.17647480" S	025° 07' 26.17698360" E
27	31° 12' 10.88691840" S	025° 07' 00.15611160" E
28	31° 12' 10.48694400" S	025° 06' 52.00624800" E
29	31° 12' 11.68679880" S	025° 06' 45.48672720" E
30	31° 12' 30.62078640" S	025° 06' 17.10708840" E
31	31° 12' 34.18587000" S	025° 06' 12.74521320" E
32	31° 12' 31.89437280" S	025° 06' 07.11425160" E
33	31° 12' 30.73534560" S	025° 05' 58.22846160" E
34	31° 12' 31.13596080" S	025° 05' 49.42479840" E
35	31° 12' 24.10062840" S	025° 05' 38.30520120" E
36	31° 12' 21.53364840" S	025° 05' 32.72705520" E
37	31° 12' 21.56659200" S	025° 05' 28.22366760" E
38	31° 12' 27.38858400" S	025° 05' 08.77891200" E
39	31° 12' 27.37125360" S	025° 04' 58.65308760" E
40	31° 12' 29.01444120" S	025° 04' 48.05365440" E
41	31° 12' 26.97822000" S	025° 03' 14.69498040" E

Internal Roads Start, Mid and End Points						
Name	Start Lat	Start Long	Mid Lat	Mid Long	End Lat	End Long
A	31° 12' 14.22839520" S	025° 02' 55.38406920" E	31° 13' 57.16237377" S	025° 02' 11.48560468" E	31° 15' 44.98837200" S	025° 02' 29.48415720" E
B	31° 12' 41.22099360" S	025° 03' 04.32565560" E	31° 12' 44.82749489" S	025° 02' 11.34729799" E	31° 12' 51.29062920" S	025° 01' 20.71614000" E
C	31° 13' 10.48488600" S	025° 02' 58.62464520" E	31° 13' 31.06690582" S	025° 03' 52.87577471" E	31° 14' 16.30254120" S	025° 04' 24.96294840" E
D	31° 13' 37.91154000" S	025° 02' 21.55158960" E	31° 13' 43.13796829" S	025° 01' 14.23040964" E	31° 13' 39.33713640" S	025° 00' 10.93134600" E
E	31° 14' 24.89636760" S	025° 02' 07.69351560" E	31° 14' 43.00600191" S	025° 03' 27.89555777" E	31° 15' 00.85842000" S	025° 04' 48.14661000" E
F	31° 14' 24.85510800" S	025° 02' 07.39106520" E	31° 14' 33.50149298" S	025° 01' 11.03048680" E	31° 14' 23.01651960" S	025° 00' 12.34733400" E
G	31° 12' 16.40116800" S	025° 02' 54.28585680" E	31° 12' 22.14571813" S	025° 03' 04.01627997" E	31° 12' 27.87987240" S	025° 03' 13.79334960" E
H	31° 12' 27.93882600" S	025° 03' 00.01466640" E	31° 12' 27.52881339" S	025° 03' 06.92058696" E	31° 12' 28.26707400" S	025° 03' 13.78541520" E
J	31° 12' 40.62522240" S	025° 02' 56.54174280" E	31° 12' 35.55760320" S	025° 02' 53.50069140" E	31° 12' 30.48998400" S	025° 02' 50.45964000" E
K	31° 12' 46.65903480" S	025° 02' 07.90262880" E	31° 12' 46.71543669" S	025° 01' 52.91961871" E	31° 12' 46.56668040" S	025° 01' 37.92332640" E
L	31° 13' 38.38025280" S	025° 01' 27.23259000" E	31° 13' 37.60194900" S	025° 01' 23.05799040" E	31° 13' 36.82364520" S	025° 01' 18.88339080" E
M	31° 13' 43.11242760" S	025° 01' 14.08333080" E	31° 13' 43.03522560" S	025° 01' 10.22064600" E	31° 13' 42.95802360" S	025° 01' 06.35796120" E
N	31° 13' 48.77033160" S	025° 00' 29.22397334" S	31° 13' 43.09736334" S	025° 00' 30.46362393" E	31° 13' 37.69700160" S	025° 00' 28.96186320" E
O	31° 14' 28.73426640" S	025° 02' 20.72581080" E	31° 14' 22.97055408" S	025° 02' 22.62215914" E	31° 14' 17.08868400" S	025° 02' 23.11861920" E
P	31° 14' 35.92087440" S	025° 01' 01.70343840" E	31° 14' 43.42285320" S	025° 01' 00.82852320" E	31° 14' 50.92711080" S	025° 00' 59.94482040" E
Q	31° 12' 23.98202640" S	025° 03' 24.76093320" E	31° 12' 25.90398901" S	025° 03' 24.76779937" E	31° 12' 27.82595160" S	025° 03' 24.77467080" E

Turbine Locations		
Name	Latitude	Longitude
SK26	31° 13' 19.00999920" S	025° 02' 47.42000160" E
SK25	31° 13' 36.09999840" S	025° 01' 41.09000160" E
SK24	31° 14' 27.20000040" S	025° 02' 06.02000160" E
SK23	31° 14' 20.81000040" S	025° 00' 38.54999880" E
SK22	31° 12' 45.97999920" S	025° 01' 38.16999840" E
SK21	31° 13' 38.30000160" S	025° 02' 23.48000160" E
SK20	31° 14' 55.46000040" S	025° 01' 45.76000080" E
SK19	31° 13' 39.91000080" S	025° 00' 10.65999960" E
SK18	31° 15' 00.24999840" S	025° 04' 48.29999880" E
SK17	31° 14' 54.21999840" S	025° 04' 19.07000040" E
SK16	31° 14' 50.40999960" S	025° 03' 49.23000000" E
SK15	31° 13' 10.02000000" S	025° 03' 02.88000000" E
SK14	31° 15' 26.58999960" S	025° 01' 47.16999840" E
SK13	31° 13' 23.72000160" S	025° 03' 43.99999920" E
SK12	31° 13' 48.28000080" S	025° 02' 13.94000160" E
SK11	31° 13' 48.87999840" S	025° 04' 05.81999880" E
SK10	31° 15' 44.43000120" S	025° 02' 29.16999960" E
SK09	31° 14' 22.43000040" S	025° 00' 12.60000000" E
SK08	31° 12' 46.40000040" S	025° 01' 58.09000080" E
SK07	31° 14' 15.87000120" S	025° 04' 25.46000040" E
SK06	31° 13' 43.53999960" S	025° 01' 06.61000080" E
SK05	31° 13' 36.31000080" S	025° 01' 19.27999920" E
SK04	31° 12' 30.96000000" S	025° 02' 49.98000120" E
SK03	31° 13' 38.04999960" S	025° 00' 28.37000160" E
SK02	31° 12' 41.25999960" S	025° 02' 17.43000000" E
SK01	31° 12' 51.90999840" S	025° 01' 20.70000120" E

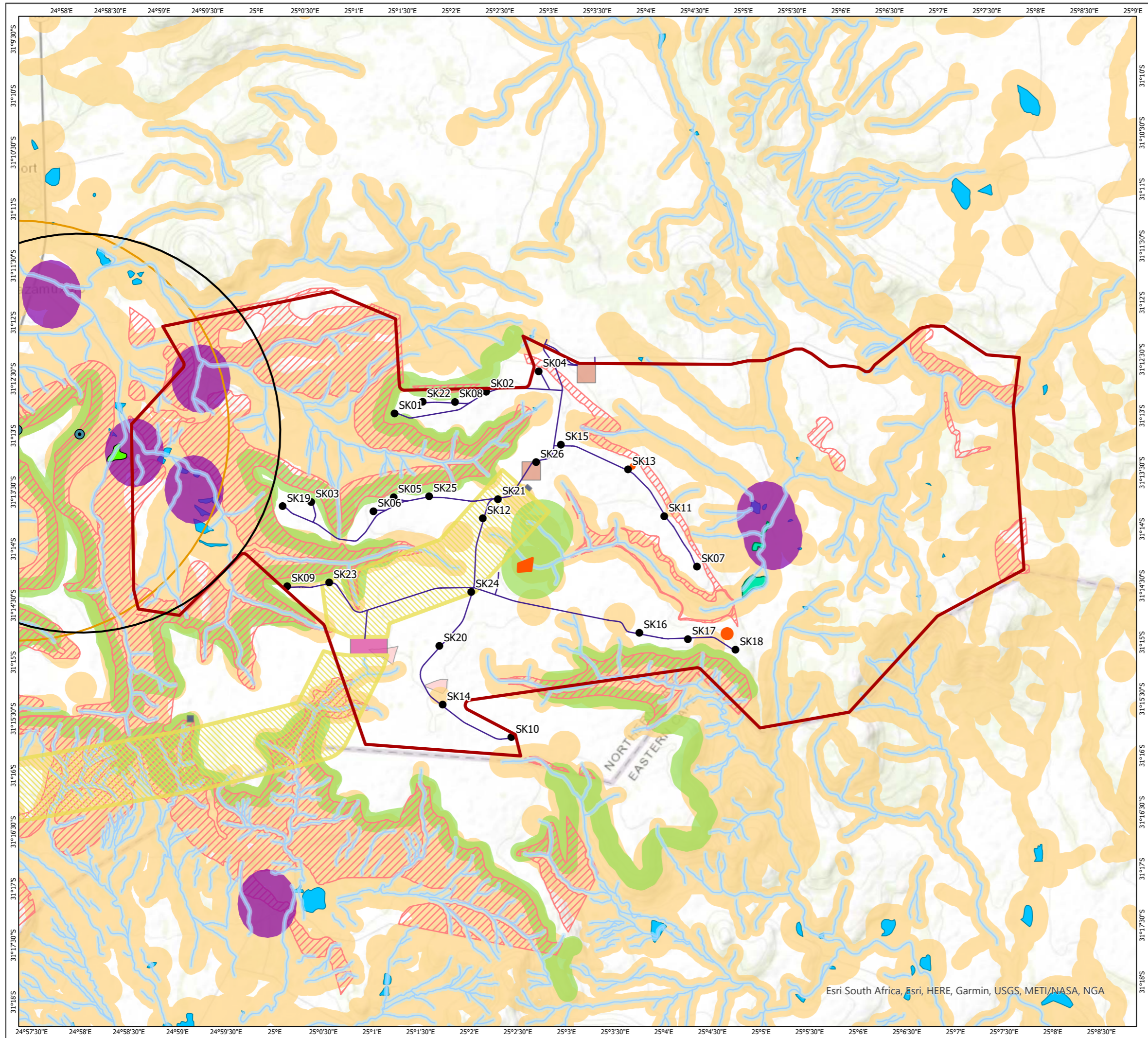
- San Kraal Site Boundary
- Approved infrastructure
 - Batching Plant and Lay Down Area
 - Authorised San Kraal Corridor
 - Substation and OMS Area
 - Switching Station
 - Turbine Locations
 - Internal Roads



Produced By: SW Ref: 3329-REP-052
 Checked By: Date: 08/02/2022

Final Site Layout Plan
 Figure 3

San Kraal WEF
Final EMPr



- San Kraal Site Boundary
- Approved infrastructure**
- Batching Plant and Lay Down Area
- Dual Turn in Option A
- Dual Turn in Option B
- Dual Turn in Option C
- MTS Substation (Hydra D)
- Authorised San Kraal Corridor
- Substation and OMS Area
- Switching Station
- Turbine Locations
- Internal Roads
- No-Go Areas (Very High Sensitivity)**
- Watercourse 32m buffer
- VE Nest Site
- Cultural Heritage No-Go Area
- No turbines but other infrastructure permitted**
- Water Courses
- Waterbodies and wetlands
- 3.4 km buffer of VE Nest Site
- 500m Noise Buffers
- Hartebeesthoek Geology
- Ecology High Sensitivity Areas
- Bat no go areas for Turbines
- Avifaunal Sensitivity
- Visual Sensitivity Areas (Turbines and other infrastructure permitted)**
- Medium-High
- 3.2 km buffer of VE Nest - construction subject to pro-active mitigation



Produced By: SW	Ref: 3329-REP-054
Checked By: SW	Date: 08/02/2022

**Final Layout overlain on
Environmental Sensitivity Map
Figure 4**

**San Kraal WEF
Final EMPr**

Esri South Africa, Esri, HERE, Garmin, USGS, METI/NASA, NGA