

**SCREENING REPORT FOR AN ENVIRONMENTAL AUTHORIZATION AS
REQUIRED BY THE 2014 EIA REGULATIONS – PROPOSED DEVELOPMENT
FOOTPRINT ENVIRONMENTAL SENSITIVITY**

EIA Reference number: New Sand Mining Permit

Project name: Donkerspruit Sand

Project title: Jannelsepan 39 Sand MP

Date screening report generated: 30/06/2023 10:11:33

Applicant: Jacobus Wouter van Zyl

Compiler: N.J van Zyl (EAP)

Compiler signature:
.....

Application Category: Mining|Mining Permit

Table of Contents

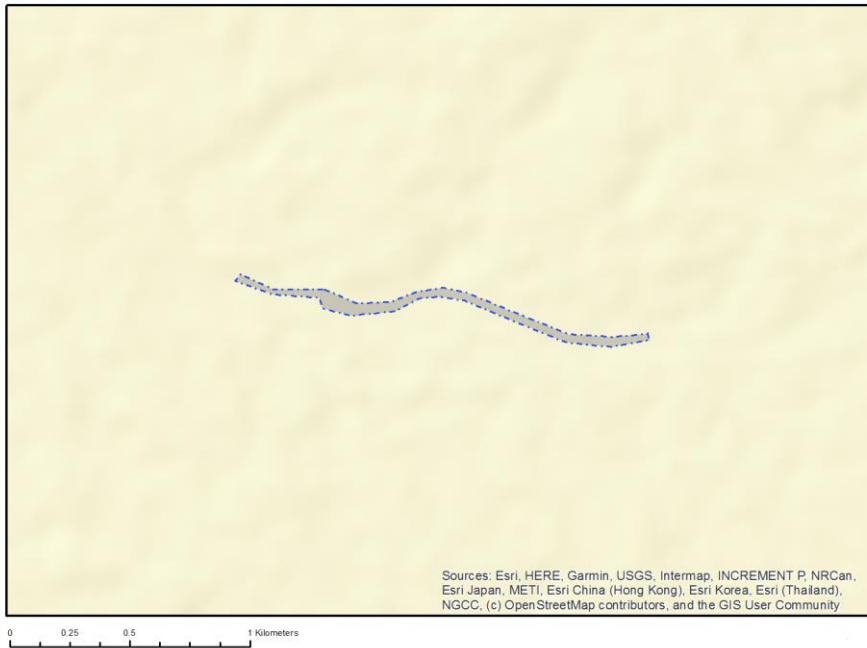
- Proposed Project Location 3
 - Orientation map 1: General location 3
- Map of proposed site and relevant area(s) 4
 - Cadastral details of the proposed site 4
 - Wind and Solar developments with an approved Environmental Authorisation or applications under consideration within 30 km of the proposed area 5
 - Environmental Management Frameworks relevant to the application 6
- Environmental screening results and assessment outcomes 6
 - Relevant development incentives, restrictions, exclusions or prohibitions 7
 - Proposed Development Area Environmental Sensitivity 7
 - Specialist assessments identified 7
- Results of the environmental sensitivity of the proposed area 9
 - MAP OF RELATIVE AGRICULTURE THEME SENSITIVITY 9
 - MAP OF RELATIVE ANIMAL SPECIES THEME SENSITIVITY 10
 - MAP OF RELATIVE AQUATIC BIODIVERSITY THEME SENSITIVITY 11
 - MAP OF RELATIVE ARCHAEOLOGICAL AND CULTURAL HERITAGE THEME SENSITIVITY 12
 - MAP OF RELATIVE CIVIL AVIATION THEME SENSITIVITY 13
 - MAP OF RELATIVE DEFENCE THEME SENSITIVITY 14
 - MAP OF RELATIVE PALEONTOLOGY THEME SENSITIVITY 15
 - MAP OF RELATIVE PLANT SPECIES THEME SENSITIVITY 16
 - MAP OF RELATIVE TERRESTRIAL BIODIVERSITY THEME SENSITIVITY 17

Proposed Project Location

Orientation map 1: General location



Map of proposed site and relevant area(s)



Cadastral details of the proposed site

Property details:

No	Farm Name	Farm/ Erf No	Portion	Latitude	Longitude	Property Type
1	JANNELSEPAN	39	0	28°35'59.55S	21°17'16.2E	Farm
2	JANNELSEPAN	39	0	28°35'58.67S	21°17'18.22E	Farm Portion

Development footprint¹ vertices:

Footprint	Latitude	Longitude
1	28°33'38.79S	21°14'57.19E
1	28°33'38.06S	21°14'57.94E
1	28°33'39.81S	21°15'2.33E
1	28°33'39.86S	21°15'9.21E
1	28°33'41.44S	21°15'13.56E
1	28°33'41.27S	21°15'18.27E
1	28°33'40.07S	21°15'21.69E
1	28°33'39.6S	21°15'25.17E
1	28°33'40.26S	21°15'28.45E
1	28°33'42.26S	21°15'34.04E
1	28°33'45.12S	21°15'42.12E
1	28°33'45.49S	21°15'47.71E
1	28°33'45.06S	21°15'52.85E
1	28°33'45.82S	21°15'53.17E

¹ “development footprint”, means the area within the site on which the development will take place and includes all ancillary developments for example roads, power lines, boundary walls, paving etc. which require vegetation clearance or which will be disturbed and for which the application has been submitted.

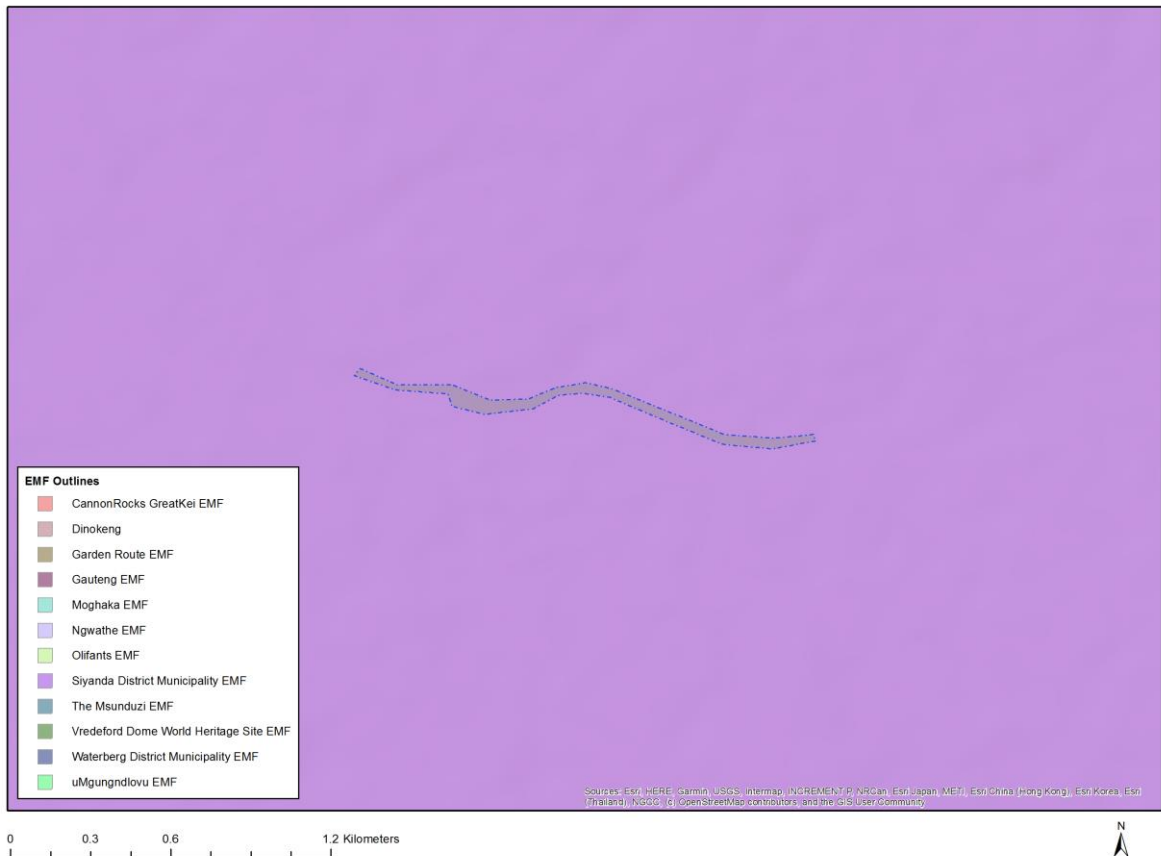
1	28°33'46.64S	21°15'48.07E
1	28°33'46.1S	21°15'41.85E
1	28°33'43.08S	21°15'33.48E
1	28°33'41.11S	21°15'28.15E
1	28°33'40.7S	21°15'25.04E
1	28°33'40.94S	21°15'21.98E
1	28°33'42.38S	21°15'18.86E
1	28°33'42.95S	21°15'13.12E
1	28°33'42.05S	21°15'9E
1	28°33'40.76S	21°15'8.51E
1	28°33'40.34S	21°15'2.26E
1	28°33'38.79S	21°14'57.19E

Wind and Solar developments with an approved Environmental Authorisation or applications under consideration within 30 km of the proposed area

No	EIA Reference No	Classification	Status of application	Distance from proposed area (km)
1	12/12/20/2230	Solar PV	Approved	23.7
2	14/12/16/3/3/2/821	Solar PV	Approved	8.8
3	14/12/16/3/3/1/2208	Solar PV	Approved	23.7
4	14/12/16/3/3/2/1107	Solar PV	Approved	12.6
5	14/12/16/3/3/1/2209	Solar PV	Approved	23.7
6	14/12/16/3/3/2/295	Solar CSP	Approved	25.4
7	14/12/16/3/3/2/656	Solar CSP	Approved	17.5
8	14/12/16/3/3/3/82	Solar CSP	Approved	29.7
9	14/12/16/3/3/2/1108	Solar PV	Approved	12.6
10	12/12/20/1831/2	Solar CSP	Approved	17.5
11	14/12/16/3/3/2/297	Solar CSP	Approved	22
12	14/12/16/3/3/1/2206	Solar PV	Approved	23.7
13	14/12/16/3/3/2/299	Solar CSP	Approved	29.4
14	14/12/16/3/3/2/291	Solar PV	Approved	22
15	14/12/16/3/3/1/2210	Solar PV	Approved	23.7
16	14/12/16/3/3/2/298	Solar CSP	Approved	22
17	14/12/16/3/3/1/2207	Solar PV	Approved	23.7
18	12/12/20/1831	Solar CSP	Approved	17.5
19	14/12/16/3/3/2/294	Solar CSP	Approved	29.4
20	12/12/20/1831/3	Solar PV	Approved	17.5
21	12/12/20/2146	Solar PV	Approved	17.3
22	14/12/16/3/3/1/2205	Solar PV	Approved	23.7
23	14/12/16/3/3/2/657	Solar CSP	Approved	17.5
24	14/12/16/3/3/2/1106	Solar PV	Approved	23.1
25	14/12/16/3/3/2/293	Solar CSP	Approved	26
26	14/12/16/3/3/2/862	Solar CSP	Approved	22
27	14/12/16/3/3/2/905	Solar CSP	Approved	24.2
28	14/12/16/3/3/2/816	Solar PV	Approved	20.4
29	14/12/16/3/3/2/815	Solar PV	Approved	20.4
30	14/12/16/3/3/1/2231	Solar PV	Approved	15.6
31	14/12/16/3/3/2/866	Solar CSP	Approved	22
32	14/12/16/3/3/2/296	Solar CSP	Approved	22
33	14/12/16/3/3/2/1105	Solar PV	Approved	23.1
34	12/12/20/1831/1	Solar CSP	Approved	17.5
35	12/12/20/2056	Solar CSP	Approved	17.6
36	14/12/16/3/3/2/289	Solar PV	Approved	22
37	14/12/16/3/3/2/290	Solar PV	Approved	22
38	12/12/20/2169	Solar PV	Approved	20.1

39	12/12/20/777	Solar CSP	Approved	17.1
40	14/12/16/3/3/2/292	Solar PV	Approved	22
41	14/12/16/3/3/1/2111	Solar PV	Approved	16.9
42	14/12/16/3/3/1/2075	Solar PV	Approved	12.7
43	14/12/16/3/3/2/904	Solar CSP	Approved	24.2

Environmental Management Frameworks relevant to the application



Environmental Management Framework	LINK
Siyanda District Municipality EMF	https://screening.environment.gov.za/ScreeningDownloads/EMF/SIYANDA_EMF_REPORT_2008.doc

Environmental screening results and assessment outcomes

The following sections contain a summary of any development incentives, restrictions, exclusions or prohibitions that apply to the proposed development footprint as well as the most environmental sensitive features on the footprint based on the footprint sensitivity screening results for the application classification that was selected. The application classification selected for this report is:

Mining | Mining Permit.

Relevant development incentives, restrictions, exclusions or prohibitions

The following development incentives, restrictions, exclusions or prohibitions and their implications that apply to this footprint are indicated below.

Incentive, restriction or prohibition	Implication
Strategic Transmission Corridor-Northern corridor	https://screening.environment.gov.za/ScreeningDownloads/DevelopmentZones/Combined_EGI.pdf
Renewable energy development zones 7-Upington	https://screening.environment.gov.za/ScreeningDownloads/DevelopmentZones/Combined_REDZ.pdf

Proposed Development Area Environmental Sensitivity

The following summary of the development footprint environmental sensitivities is identified. Only the highest environmental sensitivity is indicated. The footprint environmental sensitivities for the proposed development footprint as identified, are indicative only and must be verified on site by a suitably qualified person before the specialist assessments identified below can be confirmed.

Theme	Very High sensitivity	High sensitivity	Medium sensitivity	Low sensitivity
Agriculture Theme				X
Animal Species Theme		X		
Aquatic Biodiversity Theme	X			
Archaeological and Cultural Heritage Theme				X
Civil Aviation Theme				X
Defence Theme			X	
Paleontology Theme			X	
Plant Species Theme				X
Terrestrial Biodiversity Theme	X			

Specialist assessments identified

Based on the selected classification, and the known impacts associated with the proposed development, the following list of specialist assessments have been identified for inclusion in the assessment report. It is the responsibility of the EAP to confirm this list and to motivate in the assessment report, the reason for not including any of the identified specialist study including the provision of photographic evidence of the footprint situation.

No	Specialist assessment	Assessment Protocol
1	Agricultural Impact Assessment	https://screening.environment.gov.za/ScreeningDownloads/AssessmentProtocols/Gazetted_General_Agriculture_Assessment_Protocols.pdf
2	Archaeological and Cultural Heritage Impact Assessment	https://screening.environment.gov.za/ScreeningDownloads/AssessmentProtocols/Gazetted_General_Requirement_Assessment_Protocols.pdf
3	Palaeontology Impact Assessment	https://screening.environment.gov.za/ScreeningDownloads/AssessmentProtocols/Gazetted_General_Requirement_Assessment_Protocols.pdf

		rotocols.pdf
4	Terrestrial Biodiversity Impact Assessment	https://screening.environment.gov.za/ScreeningDownloads/AssessmentProtocols/Gazetted Terrestrial Biodiversity Assessment Protocols.pdf
5	Aquatic Biodiversity Impact Assessment	https://screening.environment.gov.za/ScreeningDownloads/AssessmentProtocols/Gazetted Aquatic Biodiversity Assessment Protocols.pdf
6	Hydrology Assessment	https://screening.environment.gov.za/ScreeningDownloads/AssessmentProtocols/Gazetted General Requirement Assessment Protocols.pdf
7	Noise Impact Assessment	https://screening.environment.gov.za/ScreeningDownloads/AssessmentProtocols/Gazetted Noise Impacts Assessment Protocol.pdf
8	Radioactivity Impact Assessment	https://screening.environment.gov.za/ScreeningDownloads/AssessmentProtocols/Gazetted General Requirement Assessment Protocols.pdf
9	Traffic Impact Assessment	https://screening.environment.gov.za/ScreeningDownloads/AssessmentProtocols/Gazetted General Requirement Assessment Protocols.pdf
10	Geotechnical Assessment	https://screening.environment.gov.za/ScreeningDownloads/AssessmentProtocols/Gazetted General Requirement Assessment Protocols.pdf
11	Socio-Economic Assessment	https://screening.environment.gov.za/ScreeningDownloads/AssessmentProtocols/Gazetted General Requirement Assessment Protocols.pdf
12	Plant Species Assessment	https://screening.environment.gov.za/ScreeningDownloads/AssessmentProtocols/Gazetted Plant Species Assessment Protocols.pdf
13	Animal Species Assessment	https://screening.environment.gov.za/ScreeningDownloads/AssessmentProtocols/Gazetted Animal Species Assessment Protocols.pdf

Results of the environmental sensitivity of the proposed area.

The following section represents the results of the screening for environmental sensitivity of the proposed footprint for relevant environmental themes associated with the project classification. It is the duty of the EAP to ensure that the environmental themes provided by the screening tool are comprehensive and complete for the project. Refer to the disclaimer.

MAP OF RELATIVE AGRICULTURE THEME SENSITIVITY

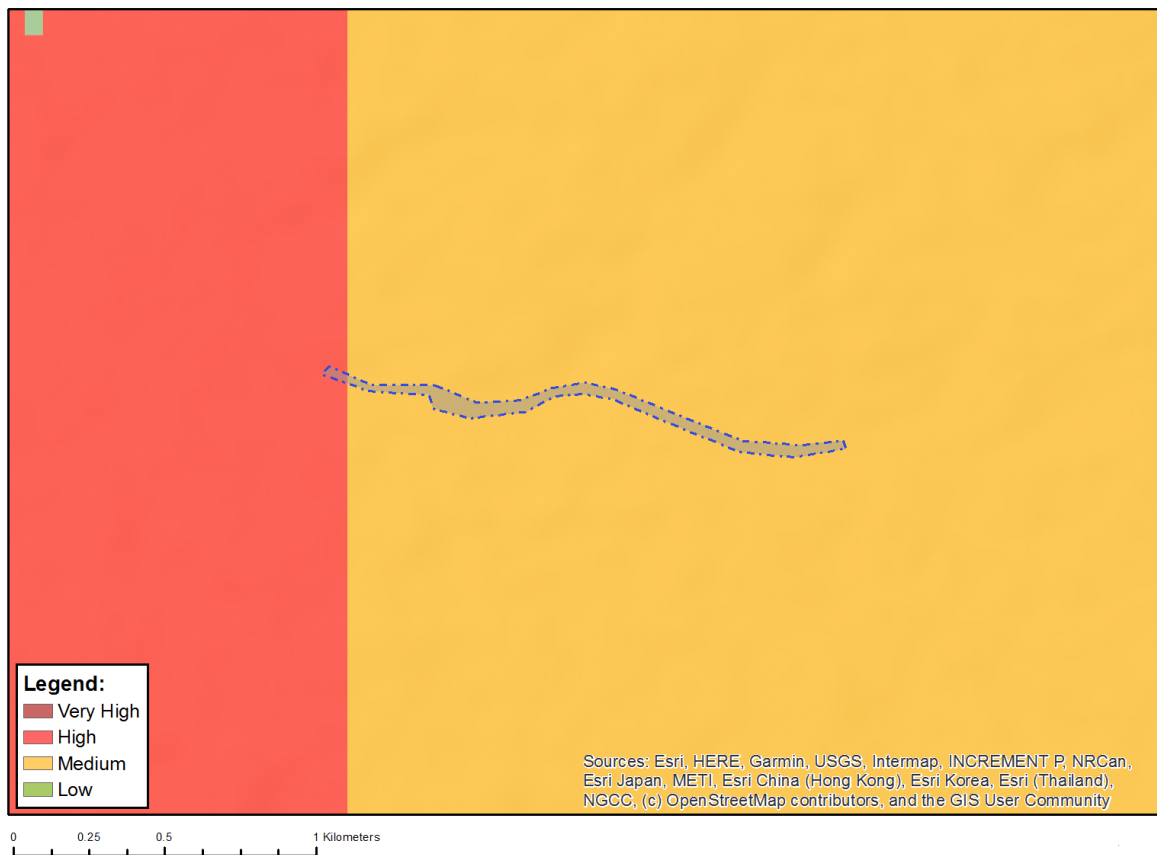


Very High sensitivity	High sensitivity	Medium sensitivity	Low sensitivity
			X

Sensitivity Features:

Sensitivity	Feature(s)
Low	Land capability;01. Very low/02. Very low/03. Low-Very low/04. Low-Very low/05. Low

MAP OF RELATIVE ANIMAL SPECIES THEME SENSITIVITY



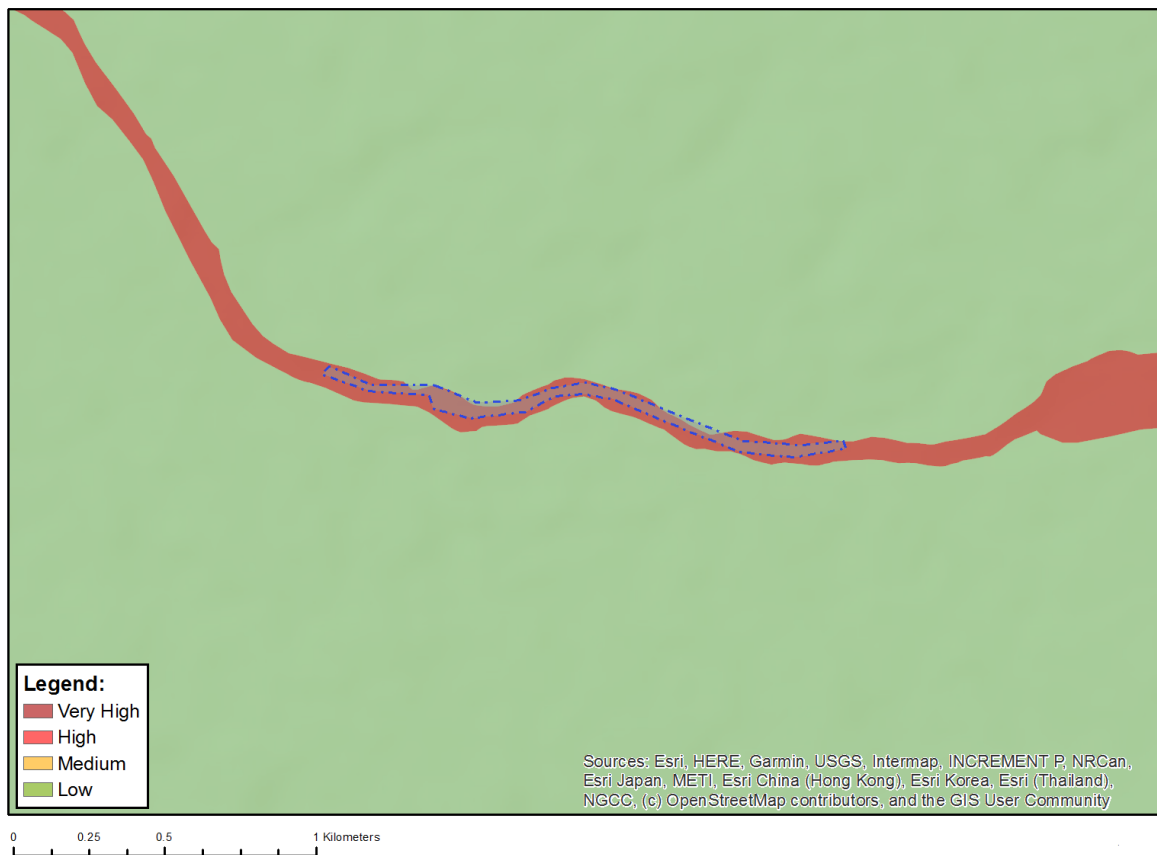
Where only a sensitive plant unique number or sensitive animal unique number is provided in the screening report and an assessment is required, the environmental assessment practitioner (EAP) or specialist is required to email SANBI at eiadatarequests@sanbi.org.za listing all sensitive species with their unique identifiers for which information is required. The name has been withheld as the species may be prone to illegal harvesting and must be protected. SANBI will release the actual species name after the details of the EAP or specialist have been documented.

Very High sensitivity	High sensitivity	Medium sensitivity	Low sensitivity
	X		

Sensitivity Features:

Sensitivity	Feature(s)
High	Aves-Neotis ludwigii
Medium	Aves-Neotis ludwigii

MAP OF RELATIVE AQUATIC BIODIVERSITY THEME SENSITIVITY



Very High sensitivity	High sensitivity	Medium sensitivity	Low sensitivity
X			

Sensitivity Features:

Sensitivity	Feature(s)
Low	Low sensitivity
Very High	Rivers_AB
Very High	Wetlands_(River)

MAP OF RELATIVE ARCHAEOLOGICAL AND CULTURAL HERITAGE THEME SENSITIVITY



Very High sensitivity	High sensitivity	Medium sensitivity	Low sensitivity
			X

Sensitivity Features:

Sensitivity	Feature(s)
Low	Low sensitivity

MAP OF RELATIVE CIVIL AVIATION THEME SENSITIVITY

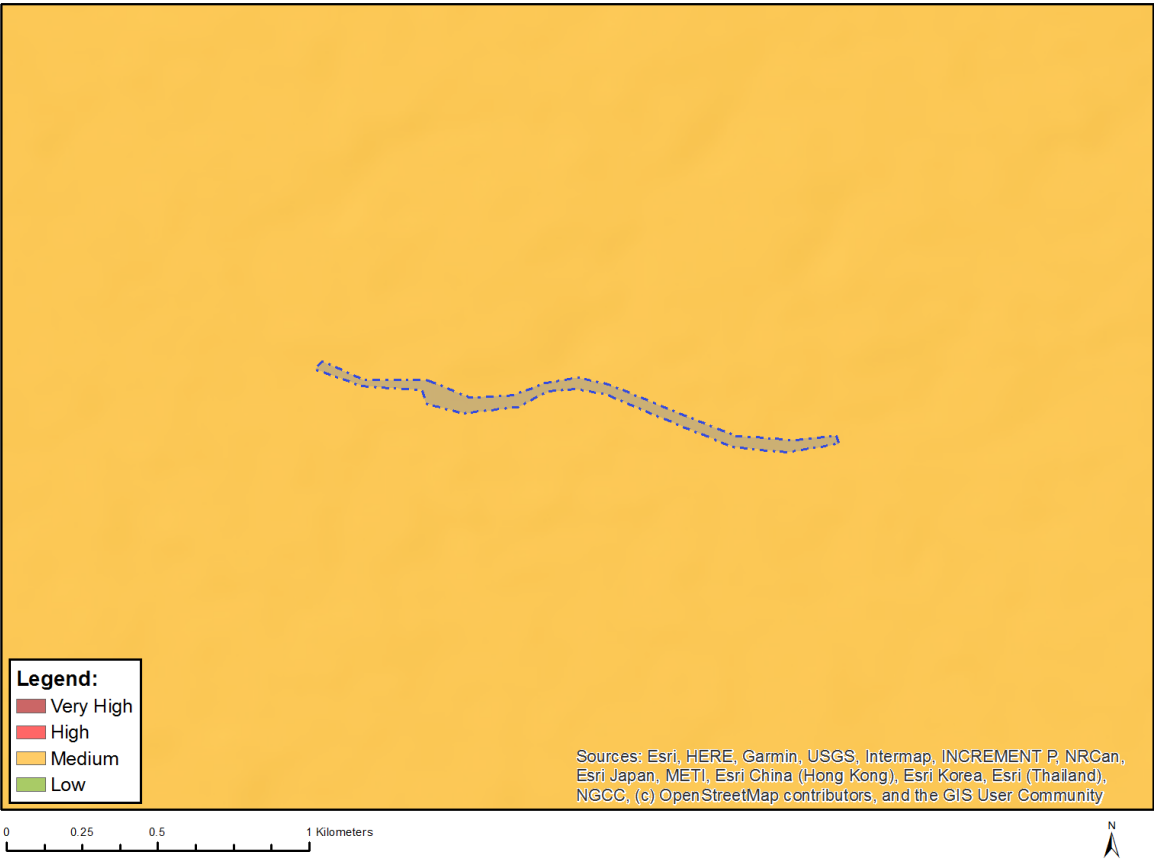


Very High sensitivity	High sensitivity	Medium sensitivity	Low sensitivity
			X

Sensitivity Features:

Sensitivity	Feature(s)
Low	Low sensitivity

MAP OF RELATIVE DEFENCE THEME SENSITIVITY

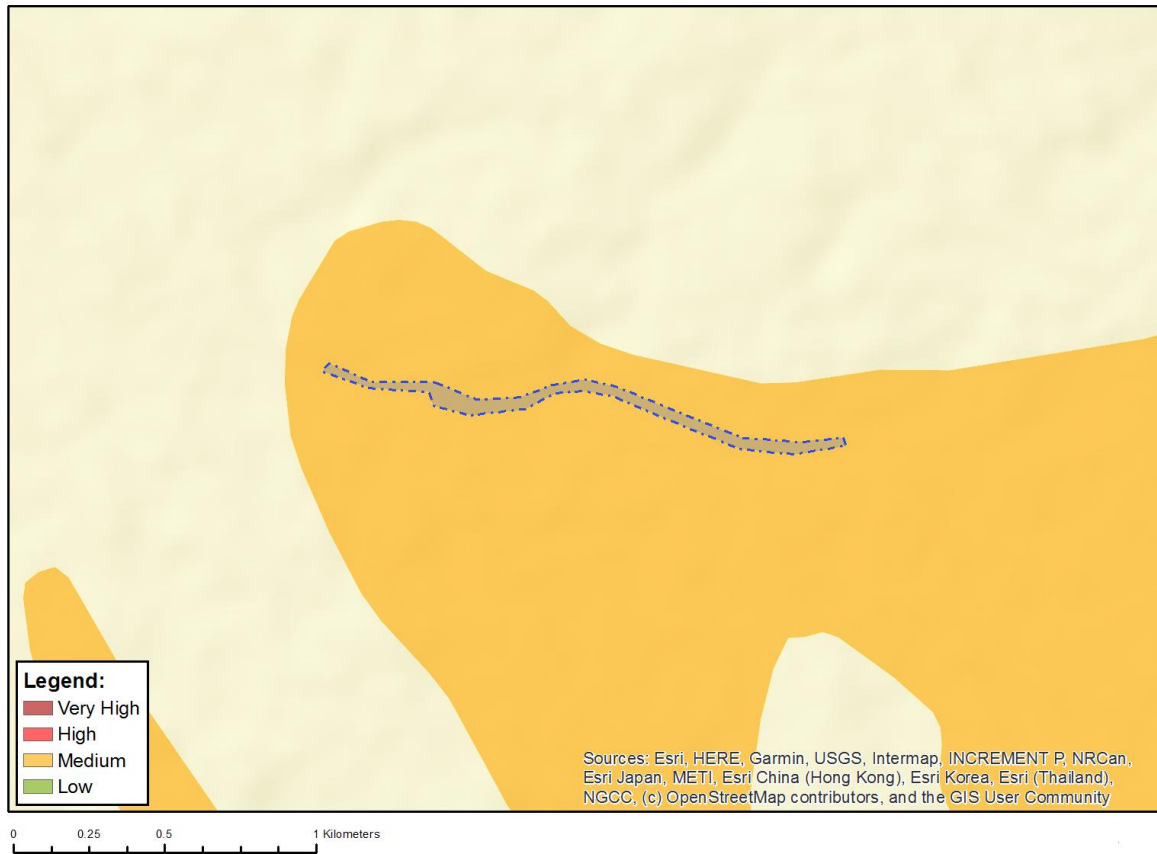


Very High sensitivity	High sensitivity	Medium sensitivity	Low sensitivity
		X	

Sensitivity Features:

Sensitivity	Feature(s)
Medium	Military and Defence Site

MAP OF RELATIVE PALEONTOLOGY THEME SENSITIVITY

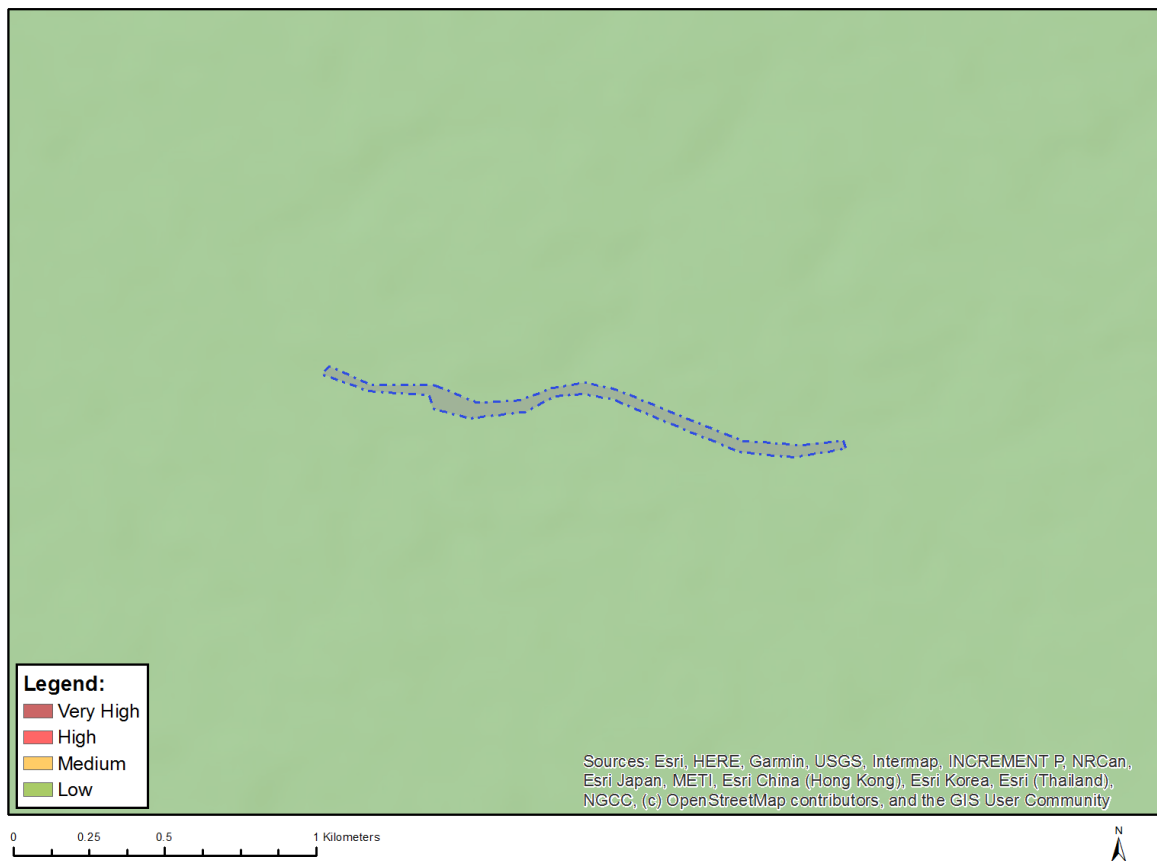


Very High sensitivity	High sensitivity	Medium sensitivity	Low sensitivity
		X	

Sensitivity Features:

Sensitivity	Feature(s)
Medium	Features with a Medium paleontological sensitivity

MAP OF RELATIVE PLANT SPECIES THEME SENSITIVITY



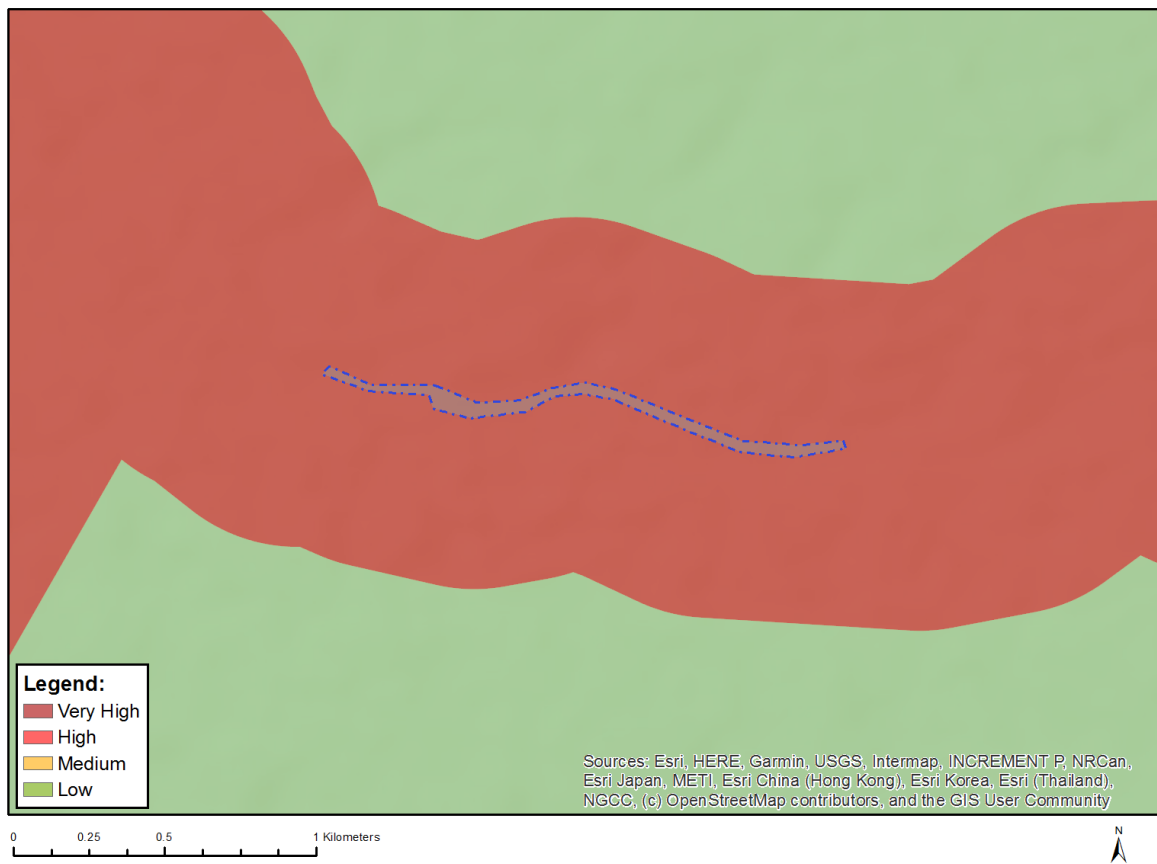
Where only a sensitive plant unique number or sensitive animal unique number is provided in the screening report and an assessment is required, the environmental assessment practitioner (EAP) or specialist is required to email SANBI at eiadatarequests@sanbi.org.za listing all sensitive species with their unique identifiers for which information is required. The name has been withheld as the species may be prone to illegal harvesting and must be protected. SANBI will release the actual species name after the details of the EAP or specialist have been documented.

Very High sensitivity	High sensitivity	Medium sensitivity	Low sensitivity
			X

Sensitivity Features:

Sensitivity	Feature(s)
Low	Low Sensitivity

MAP OF RELATIVE TERRESTRIAL BIODIVERSITY THEME SENSITIVITY



Very High sensitivity	High sensitivity	Medium sensitivity	Low sensitivity
X			

Sensitivity Features:

Sensitivity	Feature(s)
Very High	ESA