

**SCREENING REPORT FOR AN ENVIRONMENTAL AUTHORIZATION AS
REQUIRED BY THE 2014 EIA REGULATIONS – PROPOSED DEVELOPMENT
FOOTPRINT ENVIRONMENTAL SENSITIVITY**

EIA Reference number: New WC PR

Project name: Cons 10 Inland WC

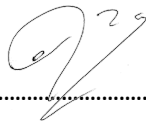
Project title: Cons 10 Inland

Date screening report generated: 19/12/2022 11:40:36

Applicant: Richwill Diamonds (Pty) Ltd

Compiler: NJ van Zyl (EAP)

Compiler signature:



Application Category: Mining|Prospecting rights

Table of Contents

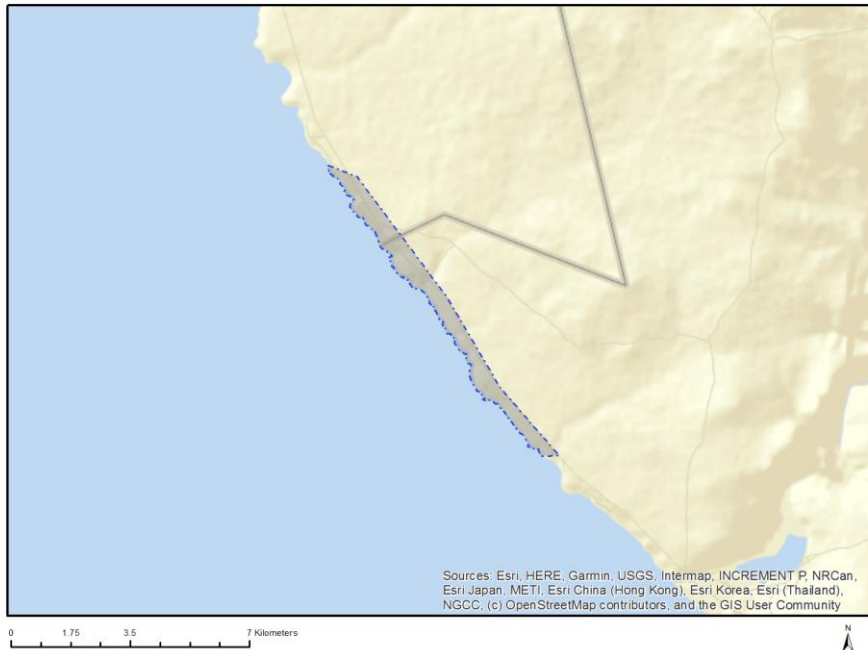
Proposed Project Location	3
Orientation map 1: General location	3
Map of proposed site and relevant area(s)	4
Cadastral details of the proposed site	4
Wind and Solar developments with an approved Environmental Authorisation or applications under consideration within 30 km of the proposed area	10
Environmental Management Frameworks relevant to the application	10
Environmental screening results and assessment outcomes	10
Relevant development incentives, restrictions, exclusions or prohibitions	10
Map indicating proposed development footprint within applicable development incentive, restriction, exclusion or prohibition zones	11
Proposed Development Area Environmental Sensitivity	11
Specialist assessments identified	12
Results of the environmental sensitivity of the proposed area	14
MAP OF RELATIVE AGRICULTURE THEME SENSITIVITY	14
MAP OF RELATIVE ANIMAL SPECIES THEME SENSITIVITY	15
MAP OF RELATIVE AQUATIC BIODIVERSITY THEME SENSITIVITY	16
MAP OF RELATIVE ARCHAEOLOGICAL AND CULTURAL HERITAGE THEME SENSITIVITY	17
MAP OF RELATIVE CIVIL AVIATION THEME SENSITIVITY	18
MAP OF RELATIVE DEFENCE THEME SENSITIVITY	19
MAP OF RELATIVE PALEONTOLOGY THEME SENSITIVITY	20
MAP OF RELATIVE PLANT SPECIES THEME SENSITIVITY	21
MAP OF RELATIVE TERRESTRIAL BIODIVERSITY THEME SENSITIVITY	22

Proposed Project Location

Orientation map 1: General location



Map of proposed site and relevant area(s)



Cadastral details of the proposed site

Property details:

No	Farm Name	Farm/ Erf No	Portion	Latitude	Longitude	Property Type
1	KAROETJIES KOP	150	0	31°11'55.8S	17°50'2.06E	Farm
2	TITIES BAAI	560	0	31°6'56.19S	17°46'1.84E	Farm
3	KLEIN KOGEL FONTEIN	561	0	31°8'25.97S	17°48'10.72E	Farm
4	KLEIN KOGEL FONTEIN	561	0	31°8'25.97S	17°48'10.72E	Farm Portion
5	KAROETJIES KOP	150	0	31°11'55.53S	17°50'6.07E	Farm Portion
6	KAROETJIES KOP	150	1	31°11'56.26S	17°47'43.15E	Farm Portion
7	TITIES BAAI	560	0	31°7'28.94S	17°46'19.61E	Farm Portion

Development footprint¹ vertices:

Footprint	Latitude	Longitude
1	31°12'54.47S	17°48'51.08E
1	31°12'54.11S	17°48'43.13E
1	31°12'53.71S	17°48'42.27E
1	31°12'52.63S	17°48'41.58E
1	31°12'51.87S	17°48'41.65E
1	31°12'50.94S	17°48'40.93E

¹ “development footprint”, means the area within the site on which the development will take place and includes all ancillary developments for example roads, power lines, boundary walls, paving etc. which require vegetation clearance or which will be disturbed and for which the application has been submitted.

1	31°12'49.36S	17°48'40.86E
1	31°12'49.18S	17°48'40.97E
1	31°12'48.92S	17°48'40.72E
1	31°12'48.92S	17°48'39.6E
1	31°12'49.21S	17°48'38.74E
1	31°12'48.67S	17°48'37.55E
1	31°12'48.35S	17°48'37.04E
1	31°12'48.32S	17°48'36.72E
1	31°12'48.42S	17°48'34.92E
1	31°12'48.38S	17°48'33.3E
1	31°12'47.73S	17°48'32.79E
1	31°12'47.27S	17°48'32.33E
1	31°12'47.02S	17°48'32.11E
1	31°12'46.83S	17°48'30.89E
1	31°12'46.05S	17°48'30.39E
1	31°12'45.58S	17°48'30.86E
1	31°12'44.28S	17°48'30.96E
1	31°12'43.49S	17°48'30.2E
1	31°12'42.69S	17°48'29.77E
1	31°12'42.12S	17°48'29.23E
1	31°12'40.32S	17°48'28.33E
1	31°12'38.98S	17°48'27.72E
1	31°12'38.3S	17°48'27.36E
1	31°12'37.91S	17°48'26.82E
1	31°12'37.23S	17°48'26.28E
1	31°12'36.65S	17°48'25.23E
1	31°12'36.18S	17°48'24.95E
1	31°12'36.33S	17°48'23.72E
1	31°12'35.5S	17°48'22.61E
1	31°12'34.88S	17°48'23.08E
1	31°12'34.09S	17°48'22.14E
1	31°12'33.55S	17°48'21.45E
1	31°12'32.58S	17°48'20.34E
1	31°12'31.86S	17°48'19.55E
1	31°12'31.29S	17°48'19.11E
1	31°12'30.99S	17°48'18.9E
1	31°12'30.92S	17°48'18.07E
1	31°12'29.77S	17°48'17.1E
1	31°12'29.41S	17°48'17.31E
1	31°12'28.77S	17°48'16.7E
1	31°12'27.97S	17°48'15.98E
1	31°12'27.18S	17°48'15.48E
1	31°12'26.03S	17°48'14.69E
1	31°12'25.09S	17°48'13.97E
1	31°12'24.8S	17°48'13.83E
1	31°12'23.94S	17°48'12.31E
1	31°12'23.73S	17°48'12.24E
1	31°12'23.15S	17°48'11.37E
1	31°12'22.83S	17°48'11.09E
1	31°12'22.72S	17°48'10.87E
1	31°12'21.89S	17°48'10.12E
1	31°12'20.38S	17°48'9.32E
1	31°12'20.23S	17°48'9.51E
1	31°12'18.43S	17°48'8.24E
1	31°12'18.36S	17°48'8.28E
1	31°12'17.82S	17°48'7.7E
1	31°12'17.1S	17°48'8.02E
1	31°12'16.71S	17°48'7.45E
1	31°12'16.52S	17°48'7.06E
1	31°12'16.41S	17°48'5.44E

1	31°12'14.62S	17°48'4.14E
1	31°12'13.5S	17°48'2.99E
1	31°12'11.77S	17°48'2.13E
1	31°12'12.06S	17°48'1.26E
1	31°12'12.09S	17°48'0.07E
1	31°12'11.7S	17°47'58.67E
1	31°12'10.77S	17°47'57.91E
1	31°12'10.26S	17°47'57.12E
1	31°12'9.97S	17°47'56.91E
1	31°12'9.87S	17°47'55.47E
1	31°12'9.4S	17°47'54.81E
1	31°12'9.22S	17°47'54.13E
1	31°12'8.93S	17°47'53.34E
1	31°12'9.43S	17°47'52.62E
1	31°12'10.15S	17°47'51.32E
1	31°12'9.18S	17°47'49.34E
1	31°12'8S	17°47'49.2E
1	31°12'8.24S	17°47'47.86E
1	31°12'6.41S	17°47'47.47E
1	31°12'5.83S	17°47'47.69E
1	31°12'5.4S	17°47'46.57E
1	31°12'4.42S	17°47'46.54E
1	31°12'2.8S	17°47'46.03E
1	31°12'2.45S	17°47'45.24E
1	31°12'2.2S	17°47'44.81E
1	31°12'2.23S	17°47'43.91E
1	31°12'1.84S	17°47'42.87E
1	31°12'1.08S	17°47'41.89E
1	31°12'0.15S	17°47'41.89E
1	31°11'59.89S	17°47'41.39E
1	31°11'58.88S	17°47'40.99E
1	31°11'56.36S	17°47'38.98E
1	31°11'55.22S	17°47'37.1E
1	31°11'53.91S	17°47'36.31E
1	31°11'52.91S	17°47'36.93E
1	31°11'52.41S	17°47'36.02E
1	31°11'50.31S	17°47'35.56E
1	31°11'49.3S	17°47'35.26E
1	31°11'48.52S	17°47'35.23E
1	31°11'46.97S	17°47'35.05E
1	31°11'45.96S	17°47'35.02E
1	31°11'44.95S	17°47'35.13E
1	31°11'44.02S	17°47'35.34E
1	31°11'42.4S	17°47'35.81E
1	31°11'41.75S	17°47'36.64E
1	31°11'40.85S	17°47'36.45E
1	31°11'40.2S	17°47'36.93E
1	31°11'39.69S	17°47'36.06E
1	31°11'39.16S	17°47'35.59E
1	31°11'39.09S	17°47'35.09E
1	31°11'39.12S	17°47'34.12E
1	31°11'38.65S	17°47'33.54E
1	31°11'38.01S	17°47'32.21E
1	31°11'36.97S	17°47'31.84E
1	31°11'36.13S	17°47'31.81E
1	31°11'34.8S	17°47'31.95E
1	31°11'34.23S	17°47'31.63E
1	31°11'33.51S	17°47'31.74E
1	31°11'32.82S	17°47'31.49E
1	31°11'31.42S	17°47'32.03E

1	31°11'31.49S	17°47'31.49E
1	31°11'31.27S	17°47'30.33E
1	31°11'30.52S	17°47'29.18E
1	31°11'30.31S	17°47'29.11E
1	31°11'29.72S	17°47'25.95E
1	31°11'28.29S	17°47'25.84E
1	31°11'27.32S	17°47'24.36E
1	31°11'27.17S	17°47'24.07E
1	31°11'24.72S	17°47'22.53E
1	31°11'22.48S	17°47'21.15E
1	31°11'20.54S	17°47'20.83E
1	31°11'19.11S	17°47'21.94E
1	31°11'18.82S	17°47'21.73E
1	31°11'18.67S	17°47'20.47E
1	31°11'17.85S	17°47'19.75E
1	31°11'17.52S	17°47'19.46E
1	31°11'17.41S	17°47'19.21E
1	31°11'17.2S	17°47'18.09E
1	31°11'16.15S	17°47'17.23E
1	31°11'15.5S	17°47'17.67E
1	31°11'15.14S	17°47'17.12E
1	31°11'14.81S	17°47'16.94E
1	31°11'15.08S	17°47'15.72E
1	31°11'14.81S	17°47'13.63E
1	31°11'13.52S	17°47'12.98E
1	31°11'12.87S	17°47'12.77E
1	31°11'12.66S	17°47'12.16E
1	31°11'10.89S	17°47'12.48E
1	31°11'10.61S	17°47'11.62E
1	31°11'9.96S	17°47'10.57E
1	31°11'9.16S	17°47'9.56E
1	31°11'7.22S	17°47'9.85E
1	31°11'6.75S	17°47'9.56E
1	31°11'5.57S	17°47'9.82E
1	31°11'4.81S	17°47'10.11E
1	31°11'4.63S	17°47'9.56E
1	31°11'4.67S	17°47'8.02E
1	31°11'3.81S	17°47'7.22E
1	31°11'2.62S	17°47'6.47E
1	31°11'2S	17°47'6.4E
1	31°11'0.78S	17°47'4.85E
1	31°11'0.02S	17°47'5.17E
1	31°10'59.41S	17°47'4.85E
1	31°10'58.65S	17°47'4.06E
1	31°10'58.01S	17°47'3.91E
1	31°10'57.22S	17°47'3.52E
1	31°10'56.39S	17°47'2.76E
1	31°10'55.92S	17°47'1.54E
1	31°10'54.66S	17°47'0.71E
1	31°10'53.03S	17°47'1.36E
1	31°10'52.72S	17°47'1.68E
1	31°10'51.92S	17°47'1.65E
1	31°10'51.5S	17°47'1.21E
1	31°10'51.35S	17°46'59.19E
1	31°10'51.13S	17°46'58.33E
1	31°10'49.94S	17°46'56.96E
1	31°10'48.79S	17°46'56.96E
1	31°10'48.51S	17°46'56.06E
1	31°10'46.7S	17°46'55.74E
1	31°10'45.58S	17°46'55.6E

1	31°10'45.08S	17°46'55.27E
1	31°10'44.07S	17°46'54.41E
1	31°10'43.11S	17°46'53.08E
1	31°10'41.31S	17°46'51.85E
1	31°10'38.21S	17°46'47.24E
1	31°10'37.99S	17°46'45.84E
1	31°10'38.32S	17°46'45.41E
1	31°10'38.64S	17°46'44.51E
1	31°10'38.57S	17°46'42.6E
1	31°10'37.88S	17°46'42.17E
1	31°10'37.81S	17°46'41.09E
1	31°10'36.7S	17°46'40.48E
1	31°10'36.3S	17°46'39.83E
1	31°10'34.03S	17°46'38.17E
1	31°10'33.06S	17°46'38.97E
1	31°10'32.88S	17°46'39E
1	31°10'32.44S	17°46'38.17E
1	31°10'31.36S	17°46'37.67E
1	31°10'30.9S	17°46'37.67E
1	31°10'31.23S	17°46'35.55E
1	31°10'30.68S	17°46'35.4E
1	31°10'30.65S	17°46'33.96E
1	31°10'29.83S	17°46'33.89E
1	31°10'29.89S	17°46'33.06E
1	31°10'28.73S	17°46'32.41E
1	31°10'28.96S	17°46'31.87E
1	31°10'28.1S	17°46'28.7E
1	31°10'27.09S	17°46'27.16E
1	31°10'26.19S	17°46'26.83E
1	31°10'24.89S	17°46'25.61E
1	31°10'22.98S	17°46'23.88E
1	31°10'22.77S	17°46'24.02E
1	31°10'22.4S	17°46'23.23E
1	31°10'21.07S	17°46'23.52E
1	31°10'20.78S	17°46'23.27E
1	31°10'20.17S	17°46'21.29E
1	31°10'18.98S	17°46'21.32E
1	31°10'18.59S	17°46'21.39E
1	31°10'17.4S	17°46'20.78E
1	31°10'17.01S	17°46'20.28E
1	31°10'14.81S	17°46'18.87E
1	31°10'12.5S	17°46'19.27E
1	31°10'11.6S	17°46'21.25E
1	31°10'11.46S	17°46'21.36E
1	31°10'10.13S	17°46'19.81E
1	31°10'10.24S	17°46'18.66E
1	31°10'9.19S	17°46'17.8E
1	31°10'8.58S	17°46'17.04E
1	31°10'7.47S	17°46'17.25E
1	31°10'6.78S	17°46'14.8E
1	31°10'6.1S	17°46'13.55E
1	31°10'5.85S	17°46'12.25E
1	31°10'5.34S	17°46'11.6E
1	31°10'4.73S	17°46'11.42E
1	31°10'3.86S	17°46'10.56E
1	31°10'3.04S	17°46'9.58E
1	31°10'2.03S	17°46'9.45E
1	31°10'1.7S	17°46'9.15E
1	31°10'1.13S	17°46'8.9E
1	31°10'0.44S	17°46'8.72E

1	31°10'0.09S	17°46'8.55E
1	31°9'59.37S	17°46'8.29E
1	31°9'59.26S	17°46'7.68E
1	31°9'57.7S	17°46'7.07E
1	31°9'56.77S	17°46'7.11E
1	31°9'55.84S	17°46'7E
1	31°9'55.12S	17°46'6.75E
1	31°9'53.71S	17°46'6.32E
1	31°9'53.28S	17°46'5.92E
1	31°9'52.2S	17°46'5.52E
1	31°9'52.24S	17°46'4.94E
1	31°9'51.74S	17°46'3.36E
1	31°9'50.36S	17°46'2.53E
1	31°9'49.68S	17°46'1.92E
1	31°9'48.35S	17°46'0.77E
1	31°9'47.56S	17°45'59.18E
1	31°9'47.16S	17°45'58.72E
1	31°9'47.01S	17°45'58.17E
1	31°9'47.09S	17°45'57.06E
1	31°9'45.79S	17°45'56.16E
1	31°9'44.86S	17°45'55.73E
1	31°9'44.53S	17°45'55.69E
1	31°9'44.06S	17°45'54.54E
1	31°9'42.15S	17°45'53.82E
1	31°9'41.18S	17°45'54.75E
1	31°9'40.9S	17°45'54.18E
1	31°9'40.61S	17°45'54.04E
1	31°9'41.36S	17°45'53.43E
1	31°9'41.33S	17°45'52.49E
1	31°9'40.68S	17°45'51.22E
1	31°9'39.78S	17°45'50.01E
1	31°9'39.63S	17°45'48.64E
1	31°9'38.59S	17°45'48.6E
1	31°9'38.31S	17°45'48.06E
1	31°9'37.01S	17°45'47.48E
1	31°9'36.18S	17°45'46.66E
1	31°9'35.21S	17°45'44.93E
1	31°9'35.02S	17°45'44.35E
1	31°9'34.49S	17°45'43.45E
1	31°9'33.73S	17°45'43.06E
1	31°9'33.19S	17°45'42.95E
1	31°9'32.39S	17°45'42.34E
1	31°9'31.35S	17°45'41.69E
1	31°9'30.09S	17°45'41.94E
1	31°9'29.05S	17°45'42.23E
1	31°9'28.33S	17°45'42.95E
1	31°9'26.5S	17°45'44.03E
1	31°9'25.89S	17°45'45.07E
1	31°9'25.74S	17°45'44.86E
1	31°9'24.66S	17°45'44.1E
1	31°9'23.69S	17°45'43.95E
1	31°9'23.4S	17°45'43.13E
1	31°9'23.18S	17°45'42.04E
1	31°9'22.86S	17°45'40.14E
1	31°9'22.14S	17°45'38.95E
1	31°9'19.44S	17°45'36.15E
1	31°9'17.64S	17°45'37.15E
1	31°9'17.14S	17°45'36.87E
1	31°9'16.77S	17°45'35.82E
1	31°9'15.7S	17°45'34.35E

1	31°9'14.62S	17°45'34.09E
1	31°9'14.36S	17°45'33.69E
1	31°9'12.92S	17°45'32.33E
1	31°9'10.91S	17°45'32.04E
1	31°9'9.57S	17°45'31.17E
1	31°9'9.03S	17°45'30.53E
1	31°9'8.49S	17°45'29.31E
1	31°9'8.28S	17°45'27.93E
1	31°9'7.81S	17°45'26.39E
1	31°9'6.51S	17°45'25.81E
1	31°9'6.12S	17°45'25.6E
1	31°9'5.76S	17°45'24.48E
1	31°9'4.78S	17°45'23.08E
1	31°9'3.1S	17°45'22.57E
1	31°9'2.56S	17°45'22.79E
1	31°9'2.56S	17°45'21.6E
1	31°9'1.22S	17°45'20.48E
1	31°8'59.6S	17°45'20.85E
1	31°8'58.49S	17°45'21.46E
1	31°8'57.91S	17°45'20.59E
1	31°9'7.48S	17°45'48.95E
1	31°10'44.77S	17°47'13.75E
1	31°11'58.46S	17°48'4.18E
1	31°12'54.22S	17°49'0.69E
1	31°12'54.47S	17°48'51.08E

Wind and Solar developments with an approved Environmental Authorisation or applications under consideration within 30 km of the proposed area

No nearby wind or solar developments found.

Environmental Management Frameworks relevant to the application

No intersections with EMF areas found.

Environmental screening results and assessment outcomes

The following sections contain a summary of any development incentives, restrictions, exclusions or prohibitions that apply to the proposed development footprint as well as the most environmental sensitive features on the footprint based on the footprint sensitivity screening results for the application classification that was selected. The application classification selected for this report is:

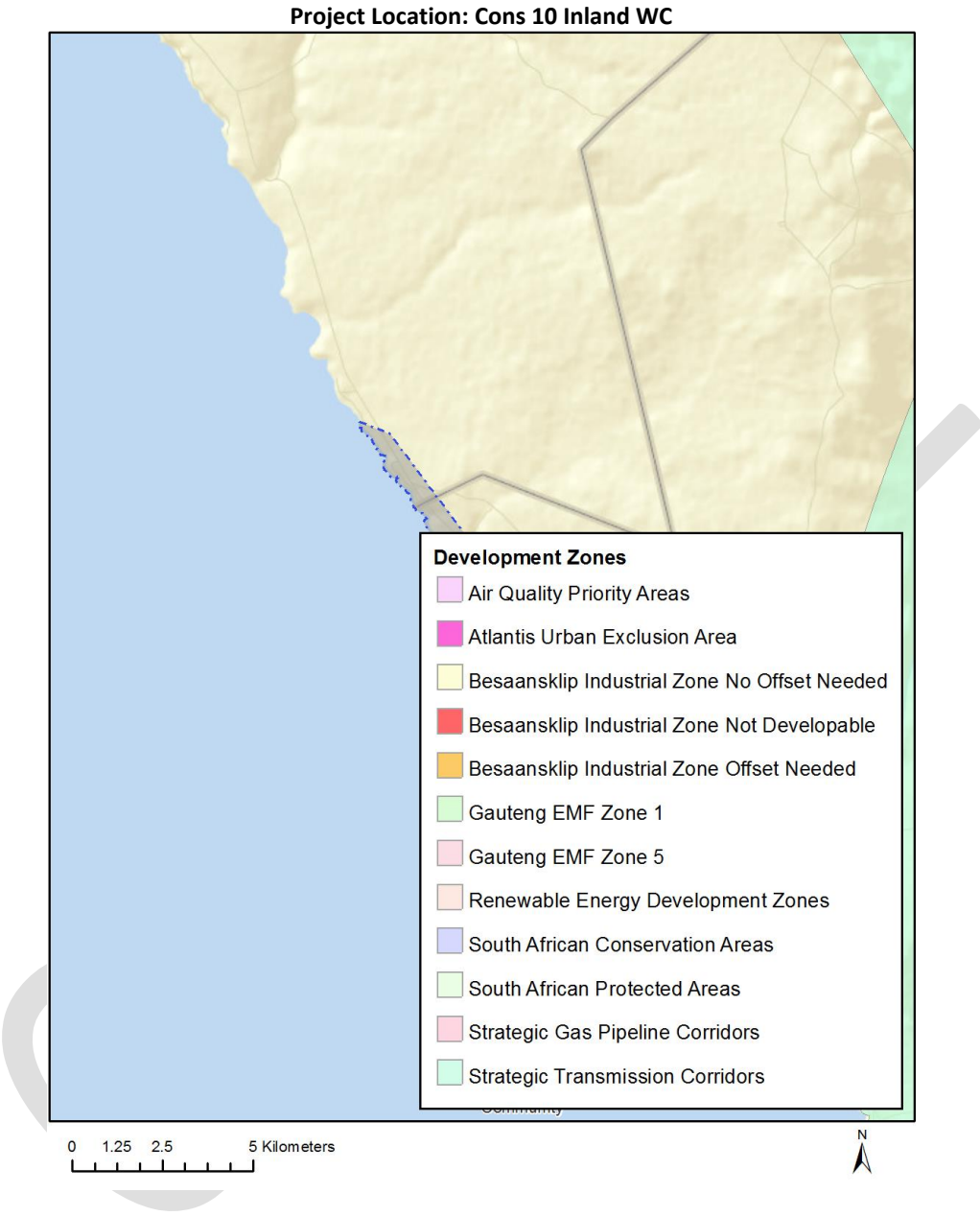
Mining | Prospecting rights.

Relevant development incentives, restrictions, exclusions or prohibitions

The following development incentives, restrictions, exclusions or prohibitions and their implications that apply to this footprint are indicated below.

No intersection with any development zones found.

Map indicating proposed development footprint within applicable development incentive, restriction, exclusion or prohibition zones



Proposed Development Area Environmental Sensitivity

The following summary of the development footprint environmental sensitivities is identified. Only the highest environmental sensitivity is indicated. The footprint environmental sensitivities for the proposed development footprint as identified, are indicative only and must be verified on site by a suitably qualified person before the specialist assessments identified below can be confirmed.

Theme	Very High sensitivity	High sensitivity	Medium sensitivity	Low sensitivity
Agriculture Theme			X	
Animal Species Theme		X		

Aquatic Biodiversity Theme	X			
Archaeological and Cultural Heritage Theme	X			
Civil Aviation Theme				X
Defence Theme				X
Paleontology Theme	X			
Plant Species Theme			X	
Terrestrial Biodiversity Theme	X			

Specialist assessments identified

Based on the selected classification, and the environmental sensitivities of the proposed development footprint, the following list of specialist assessments have been identified for inclusion in the assessment report. It is the responsibility of the EAP to confirm this list and to motivate in the assessment report, the reason for not including any of the identified specialist study including the provision of photographic evidence of the footprint situation.

No	Specialist assessment	Assessment Protocol
1	Agricultural Impact Assessment	https://screening.environment.gov.za/ScreeningDownloads/AssessmentProtocols/Gazetted_General_Agriculture_Assessment_Protocols.pdf
2	Archaeological and Cultural Heritage Impact Assessment	https://screening.environment.gov.za/ScreeningDownloads/AssessmentProtocols/Gazetted_General_Requirement_Assessment_Protocols.pdf
3	Palaeontology Impact Assessment	https://screening.environment.gov.za/ScreeningDownloads/AssessmentProtocols/Gazetted_General_Requirement_Assessment_Protocols.pdf
4	Terrestrial Biodiversity Impact Assessment	https://screening.environment.gov.za/ScreeningDownloads/AssessmentProtocols/Gazetted_Terrestrial_Biodiversity_Assessment_Protocols.pdf
5	Aquatic Biodiversity Impact Assessment	https://screening.environment.gov.za/ScreeningDownloads/AssessmentProtocols/Gazetted_Aquatic_Biodiversity_Assessment_Protocols.pdf
6	Noise Impact Assessment	https://screening.environment.gov.za/ScreeningDownloads/AssessmentProtocols/Gazetted_Noise_Impacts_Assessment_Protocol.pdf

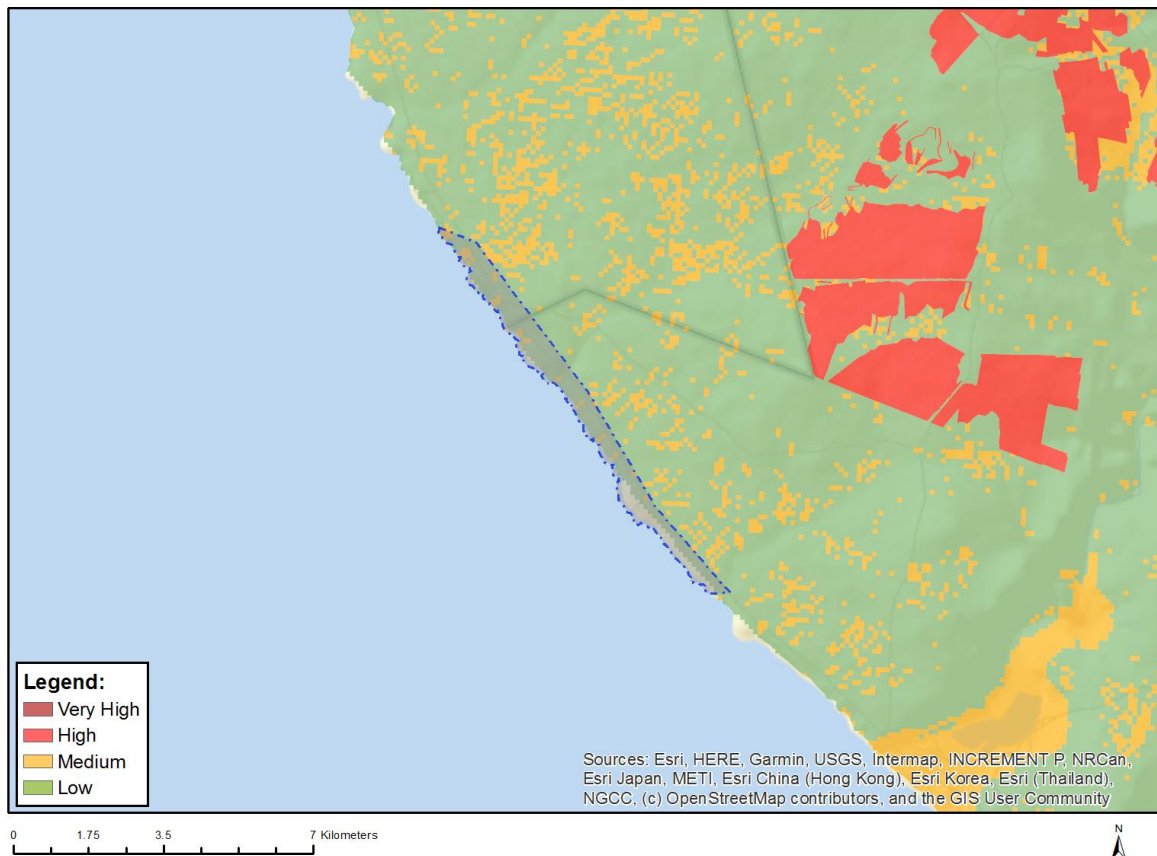
	ment	
7	Radioactivity Impact Assessment	https://screening.environment.gov.za/ScreeningDownloads/AssessmentProtocols/Gazetted_General_Requirement_Assessment_Protocols.pdf
8	Plant Species Assessment	https://screening.environment.gov.za/ScreeningDownloads/AssessmentProtocols/Gazetted_Plant_Species_Assessment_Protocols.pdf
9	Animal Species Assessment	https://screening.environment.gov.za/ScreeningDownloads/AssessmentProtocols/Gazetted_Animal_Species_Assessment_Protocols.pdf

OFFICIAL

Results of the environmental sensitivity of the proposed area.

The following section represents the results of the screening for environmental sensitivity of the proposed footprint for relevant environmental themes associated with the project classification. It is the duty of the EAP to ensure that the environmental themes provided by the screening tool are comprehensive and complete for the project. Refer to the disclaimer.

MAP OF RELATIVE AGRICULTURE THEME SENSITIVITY

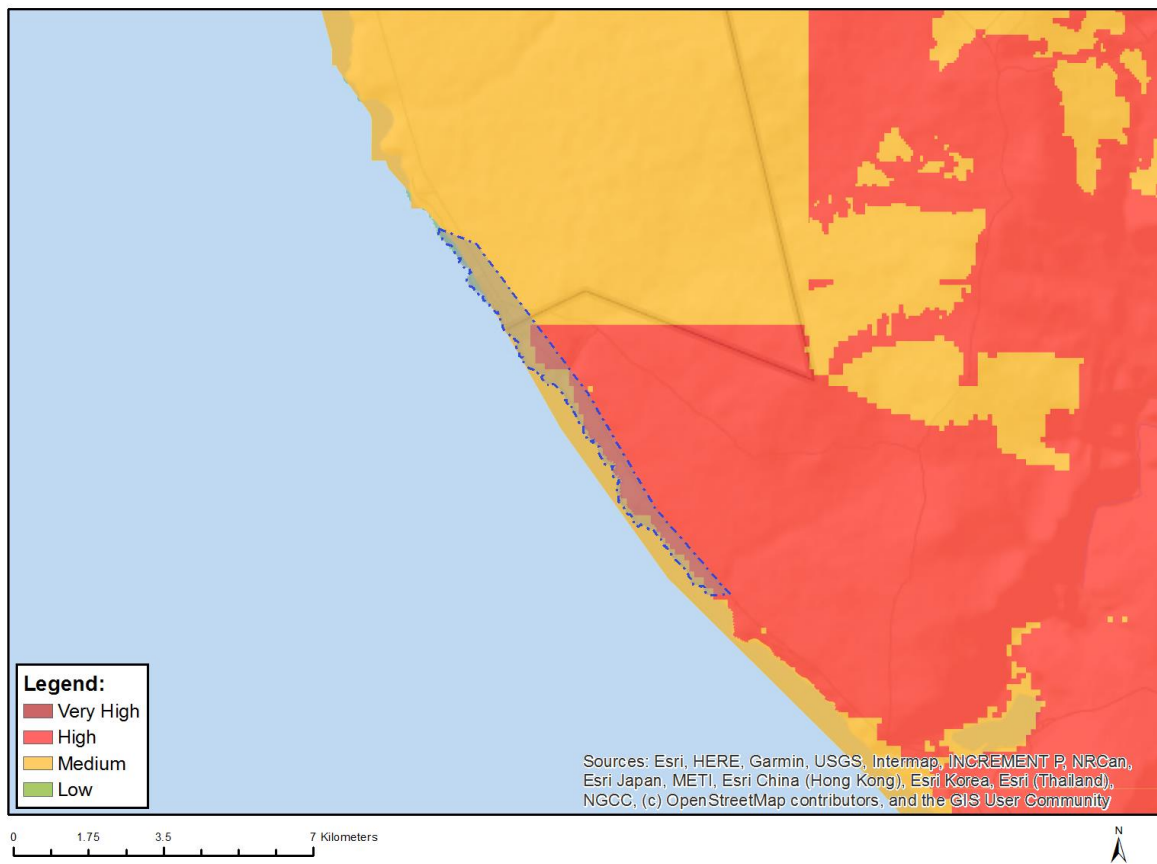


Very High sensitivity	High sensitivity	Medium sensitivity	Low sensitivity
		X	

Sensitivity Features:

Sensitivity	Feature(s)
Low	Land capability;01. Very low/02. Very low/03. Low-Very low/04. Low-Very low/05. Low
Medium	Land capability;06. Low-Moderate/07. Low-Moderate/08. Moderate

MAP OF RELATIVE ANIMAL SPECIES THEME SENSITIVITY



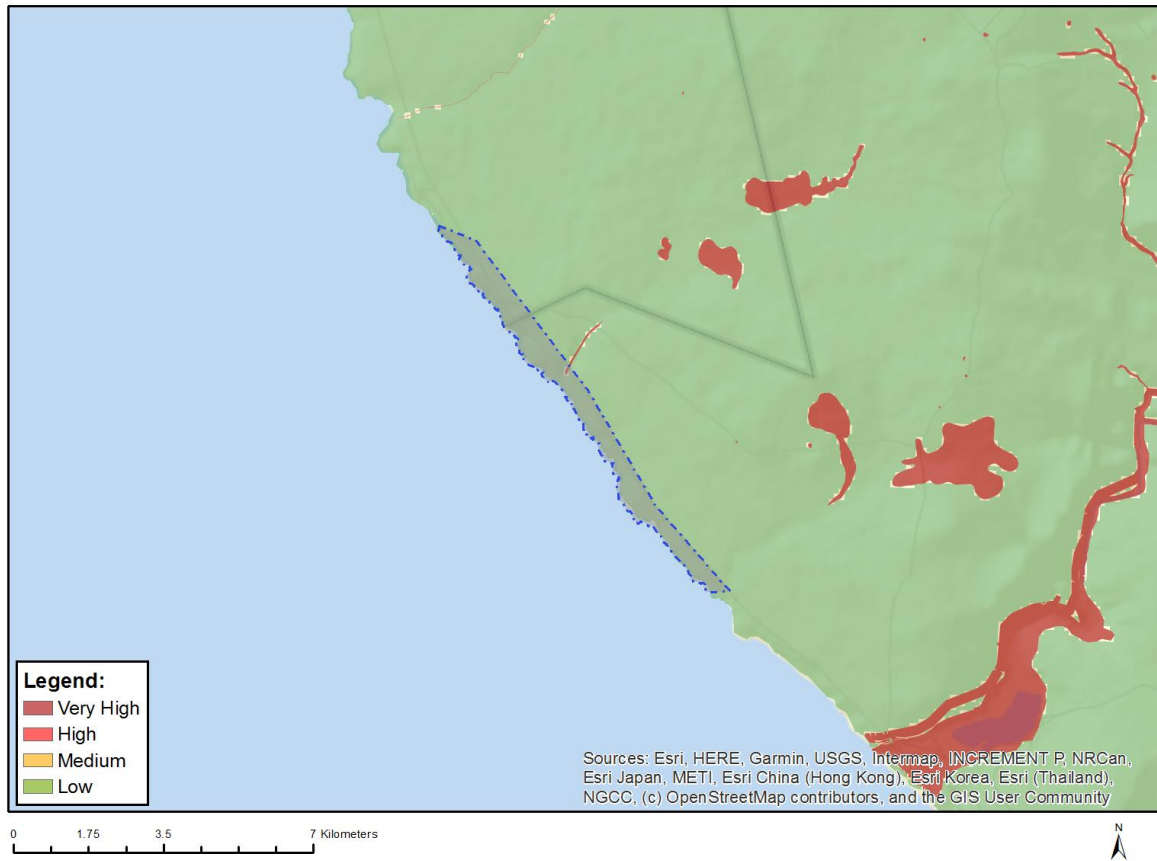
Where only a sensitive plant unique number or sensitive animal unique number is provided in the screening report and an assessment is required, the environmental assessment practitioner (EAP) or specialist is required to email SANBI at eiadatarequests@sanbi.org.za listing all sensitive species with their unique identifiers for which information is required. The name has been withheld as the species may be prone to illegal harvesting and must be protected. SANBI will release the actual species name after the details of the EAP or specialist have been documented.

Very High sensitivity	High sensitivity	Medium sensitivity	Low sensitivity
	X		

Sensitivity Features:

Sensitivity	Feature(s)
High	Aves-Afrotis afra
Low	Subject to confirmation
Medium	Aves-Afrotis afra
Medium	Aves-Circus maurus
Medium	Sensitive species 32
Medium	Invertebrate-Brinckiella mauerbergerorum

MAP OF RELATIVE AQUATIC BIODIVERSITY THEME SENSITIVITY

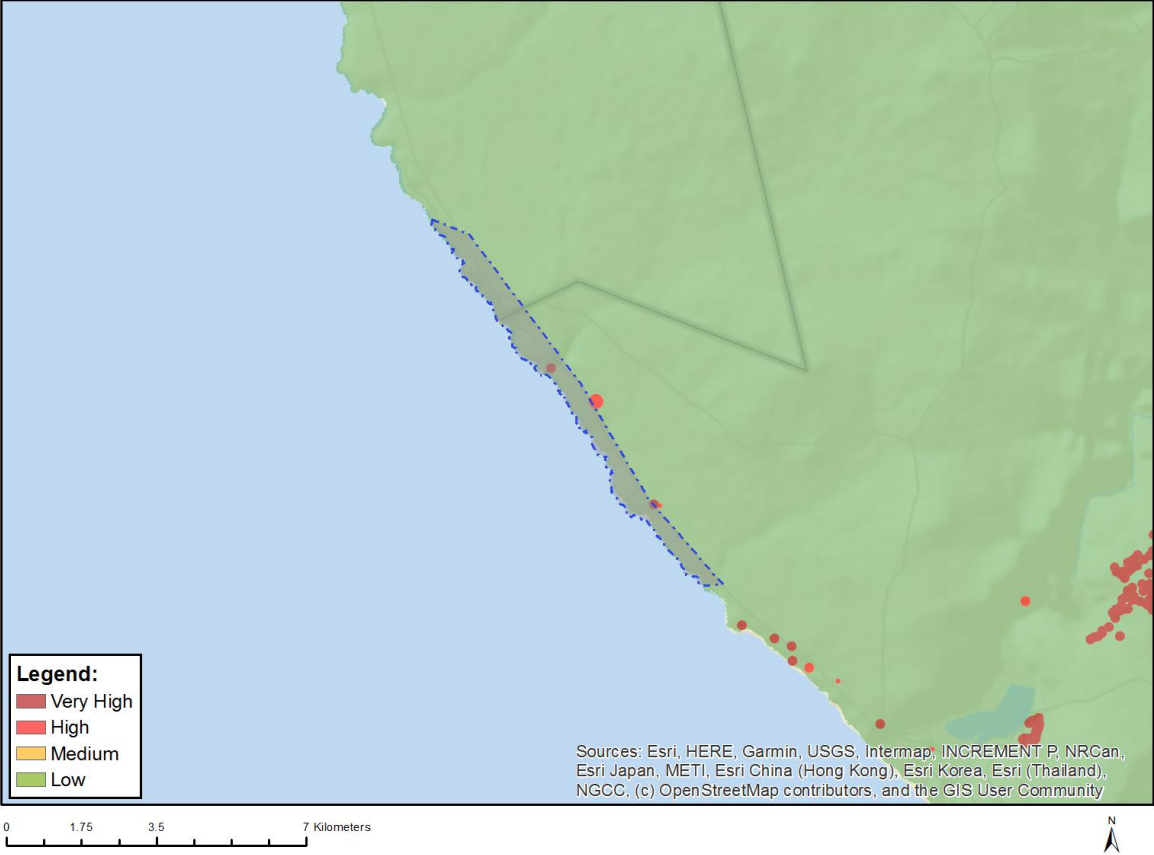


Very High sensitivity	High sensitivity	Medium sensitivity	Low sensitivity
X			

Sensitivity Features:

Sensitivity	Feature(s)
Low	Low sensitivity
Very High	Wetlands and Estuaries

MAP OF RELATIVE ARCHAEOLOGICAL AND CULTURAL HERITAGE THEME SENSITIVITY

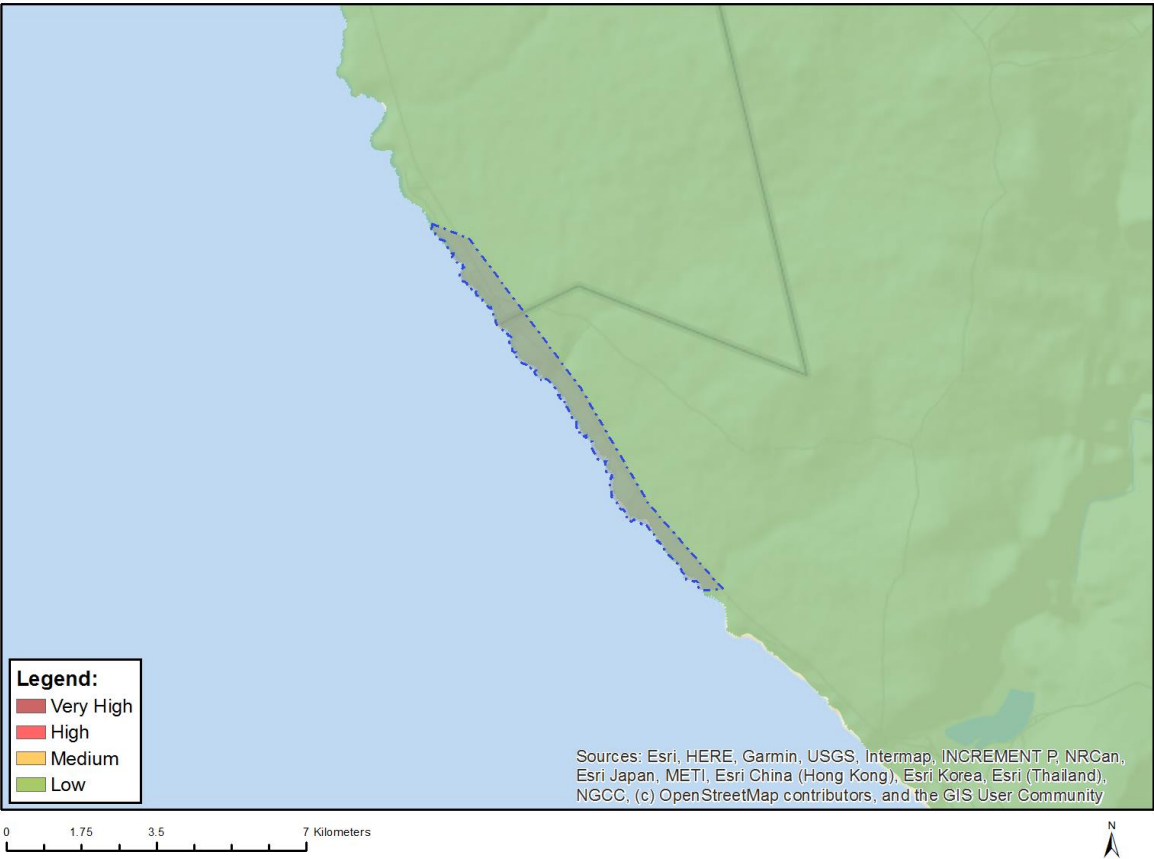


Very High sensitivity	High sensitivity	Medium sensitivity	Low sensitivity
X			

Sensitivity Features:

Sensitivity	Feature(s)
High	Within 150m of a Grade IIIa Heritage site
High	Within 100m of a Grade IIIb Heritage site
Low	Low sensitivity
Very High	Within 100m of an Ungraded Heritage site

MAP OF RELATIVE CIVIL AVIATION THEME SENSITIVITY

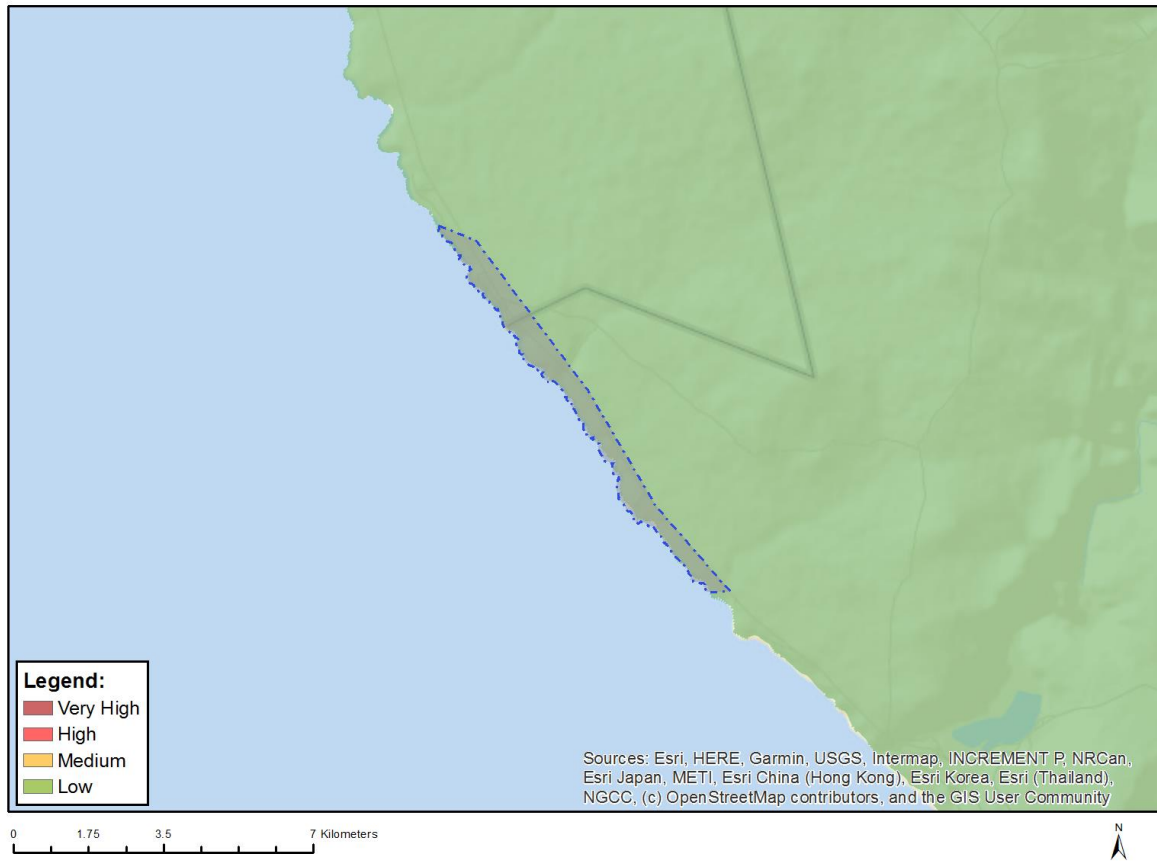


Very High sensitivity	High sensitivity	Medium sensitivity	Low sensitivity
			X

Sensitivity Features:

Sensitivity	Feature(s)
Low	Low sensitivity

MAP OF RELATIVE DEFENCE THEME SENSITIVITY

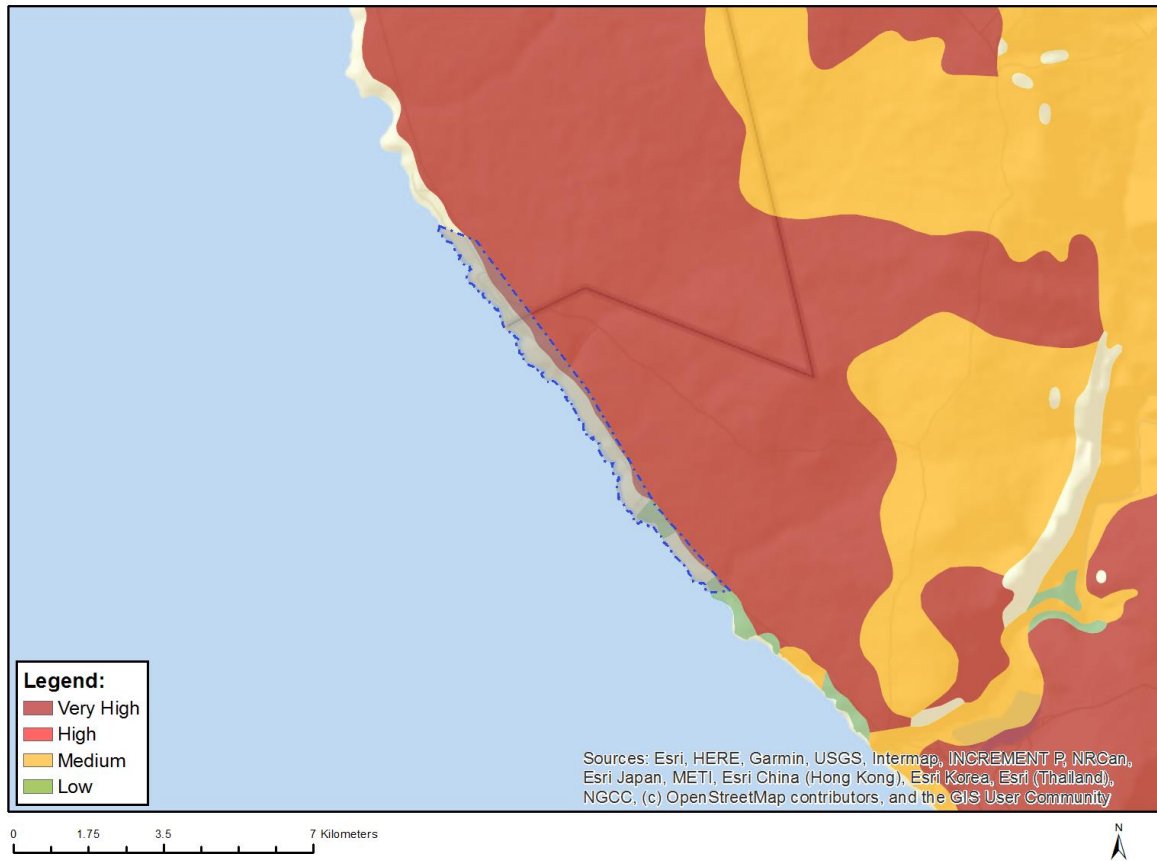


Very High sensitivity	High sensitivity	Medium sensitivity	Low sensitivity
			X

Sensitivity Features:

Sensitivity	Feature(s)
Low	Low Sensitivity

MAP OF RELATIVE PALEONTOLOGY THEME SENSITIVITY

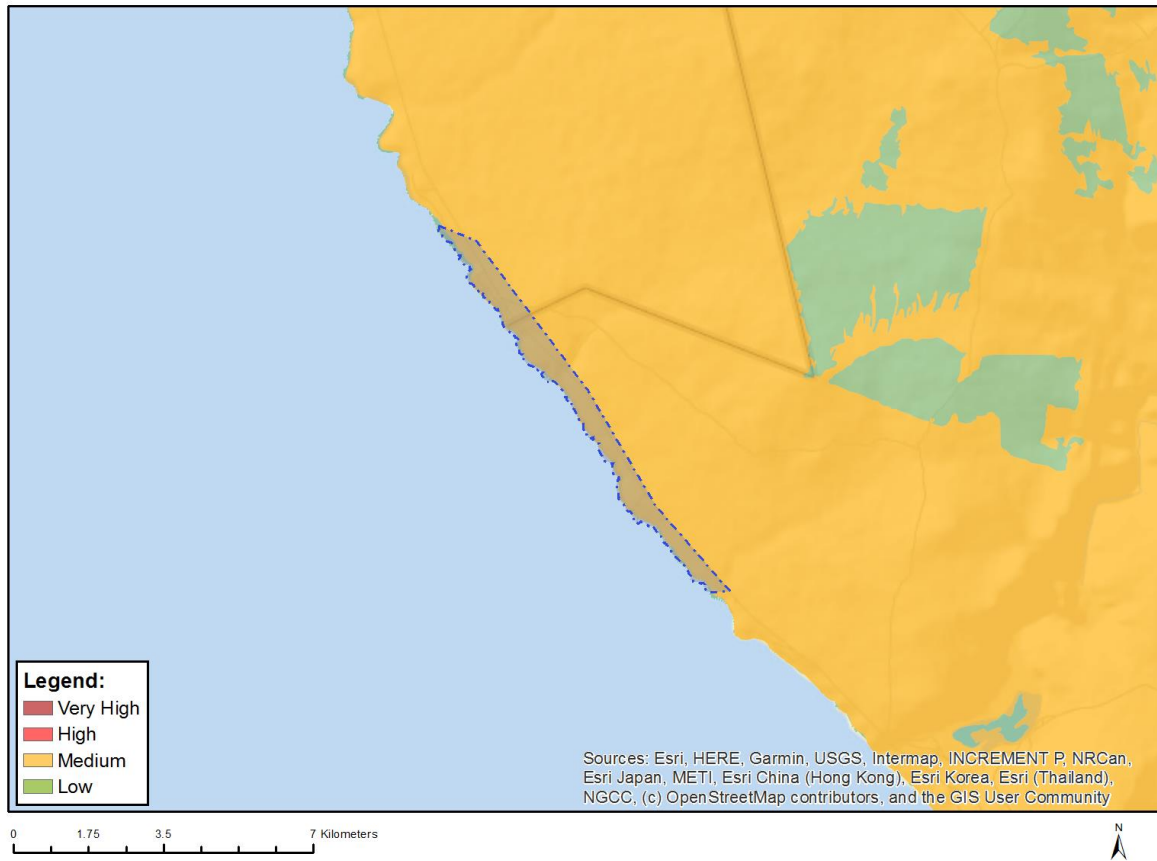


Very High sensitivity	High sensitivity	Medium sensitivity	Low sensitivity
X			

Sensitivity Features:

Sensitivity	Feature(s)
Low	Features with a Low paleontological sensitivity
Very High	Features with a Very High paleontological sensitivity

MAP OF RELATIVE PLANT SPECIES THEME SENSITIVITY



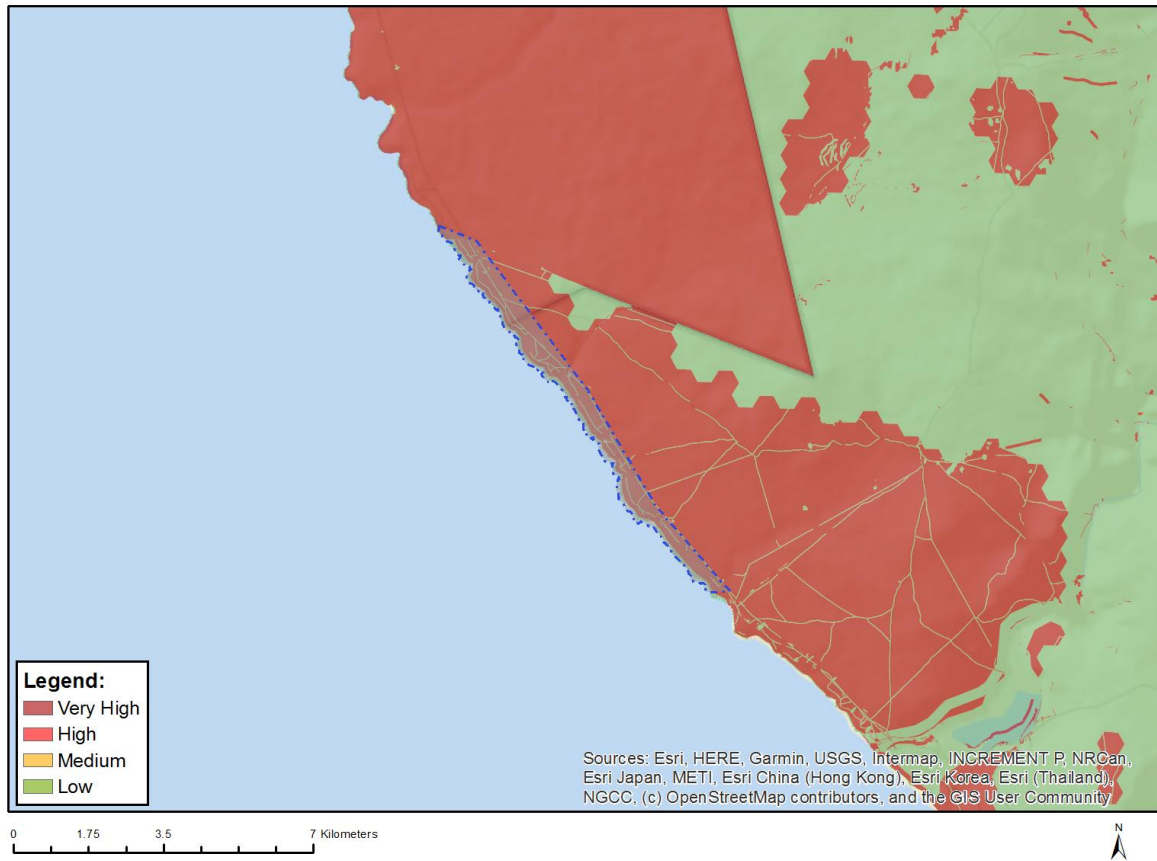
Where only a sensitive plant unique number or sensitive animal unique number is provided in the screening report and an assessment is required, the environmental assessment practitioner (EAP) or specialist is required to email SANBI at eiadatarequests@sanbi.org.za listing all sensitive species with their unique identifiers for which information is required. The name has been withheld as the species may be prone to illegal harvesting and must be protected. SANBI will release the actual species name after the details of the EAP or specialist have been documented.

Very High sensitivity	High sensitivity	Medium sensitivity	Low sensitivity
		X	

Sensitivity Features:

Sensitivity	Feature(s)
Low	Low Sensitivity
Medium	Manulea cinerea
Medium	Tetragonia pillansii
Medium	Leucoptera nodosa
Medium	Oncosiphon schlechteri
Medium	Sensitive species 1156
Medium	Argyrobium velutinum
Medium	Aspalathus obtusata
Medium	Helichrysum dunense
Medium	Muraltia obovata

MAP OF RELATIVE TERRESTRIAL BIODIVERSITY THEME SENSITIVITY



Very High sensitivity	High sensitivity	Medium sensitivity	Low sensitivity
X			

Sensitivity Features:

Sensitivity	Feature(s)
Low	Low Sensitivity
Very High	Critical biodiversity area 1
Very High	Ecological support area 1
Very High	Ecological support area 2
Very High	Critical biodiversity area 2