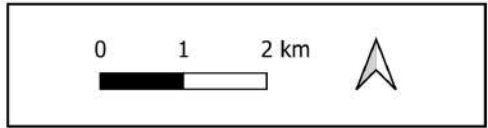
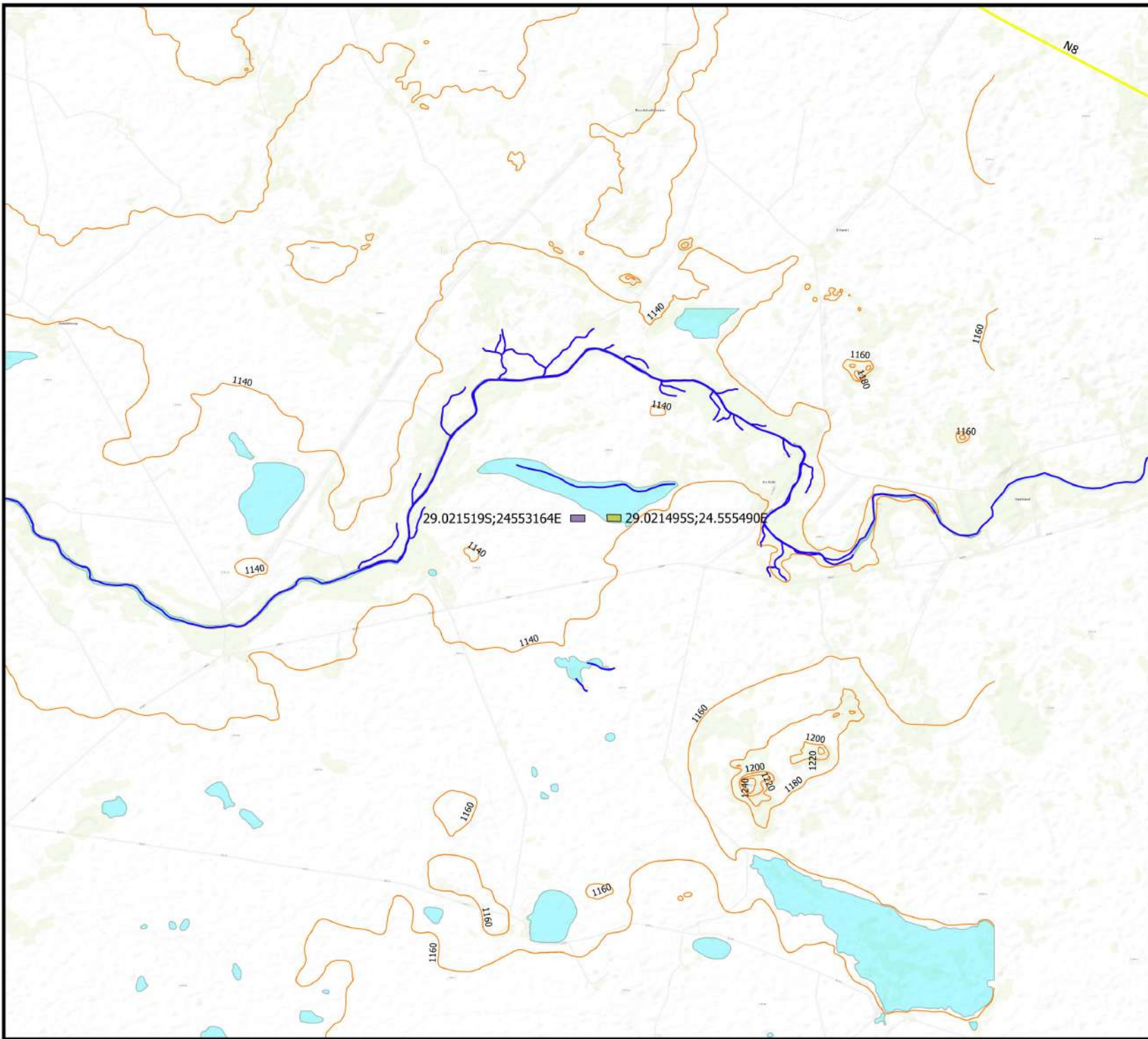


Pulida BESS Aerial Locality Map

- Legend**
- Roads
 - Modder Rivier
 - N8 National Road
 - Waterbodies
 - Alternative 1
 - Alternative 2 (Preferred)



Scale: 1:50000
 Datum: WGS 84
 Date Created: May 2022
 Created by: Luke Saunders
 Contact: lukes@ncc-group.co.za



Pulida BESS Topographical Map

Legend

- Contour Lines
- Modder Rivier
- N8 National Road
- Waterbodies
- Alternative 1
- Alternative 2 (Preferred)



Scale: 1:50000
Datum: WGS 84
Date Created: May 2022
Created by: Luke Saunders
Contact: lukes@ncc-group.co.za

Pulida BESS Opportunities and Constraints Map: Connection to the existing PV substation

Legend

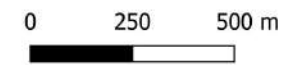
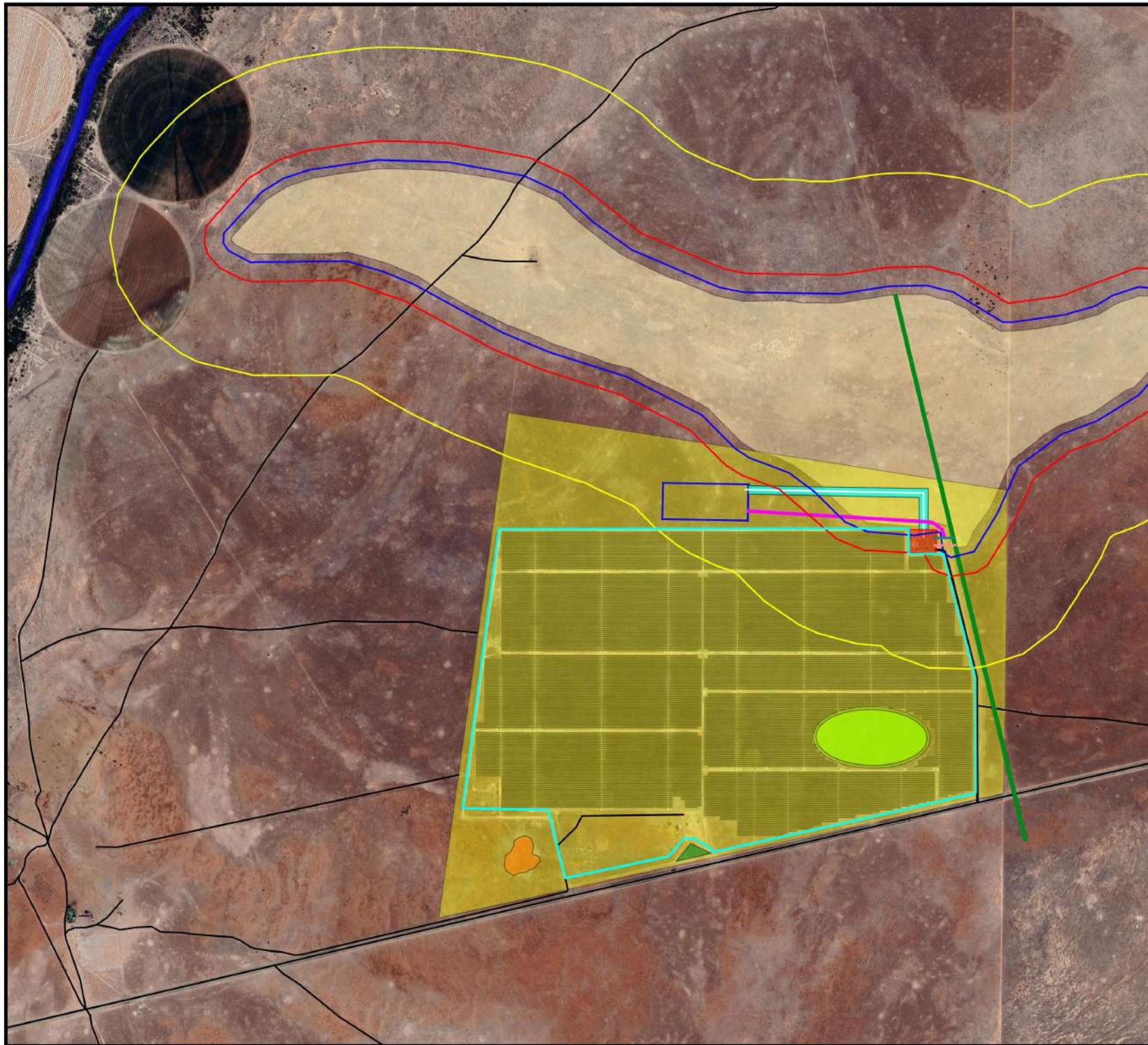
- Low Ecological Sensitivity Level
- Medium Ecological Sensitivity Level
- High Ecological Sensitivity Level
- Modder rivier
- Heritage Site
- Dry Watercourse
- 32m buffer
- 100m buffer
- 500m Buffer

Existing Infrastructure

- Existing Loop-In
- Existing Loop-Out
- Existing Roads
- Existing Servitude Line
- Existing PV Facility
- Existing Substation

Proposed Infrastructure

- New Access Road
- Proposed Line
- Proposed Line Servitude
- BESS and Substation



Scale: 1:15000
Datum: WGS 84
Date Created: August 2022
Created by: Luke Saunders
Contact: lukes@ncc-group.co.za

Pulida BESS Opportunities and Constraints Map: Connection to the existing loop-in and Loop Out lines

Legend

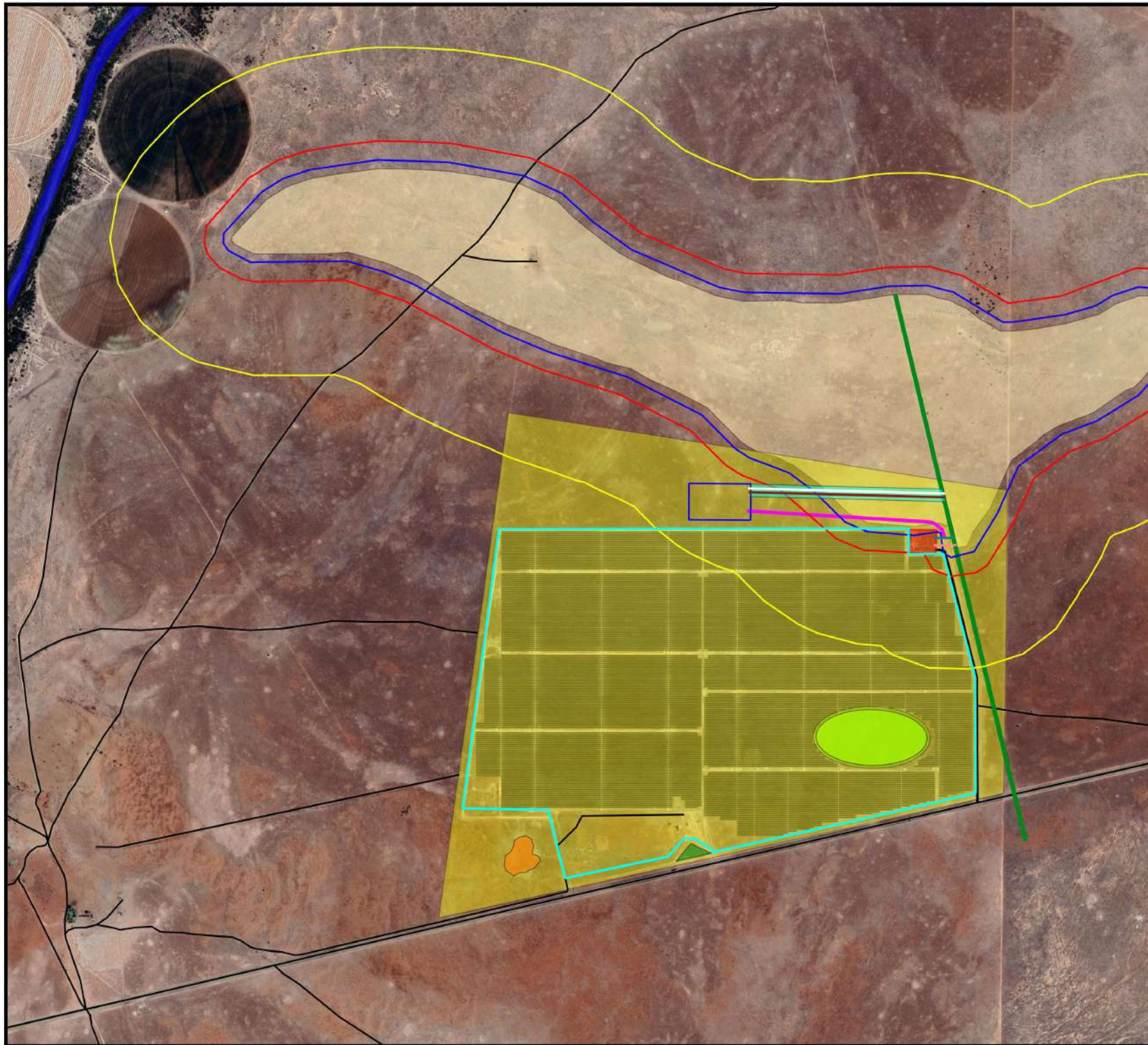
- Low Ecological Sensitivity Level
- Medium Ecological Sensitivity Level
- High Ecological Sensitivity Level
- Modder rivier
- Heritage Site
- Dry Watercourse
- 32m buffer
- 100m buffer
- 500m Buffer

Existing Infrastructure

- Existing Loop-In
- Existing Loop-Out
- Existing Roads
- Existing Servitude Line
- Existing PV Facility
- Existing Substation

Proposed Infrastructure

- New Access Road
- Proposed Loop-In
- Proposed Loop-Out
- Proposed Line Servitude
- BESS and Substation



0 250 500 m



Scale: 1:15000

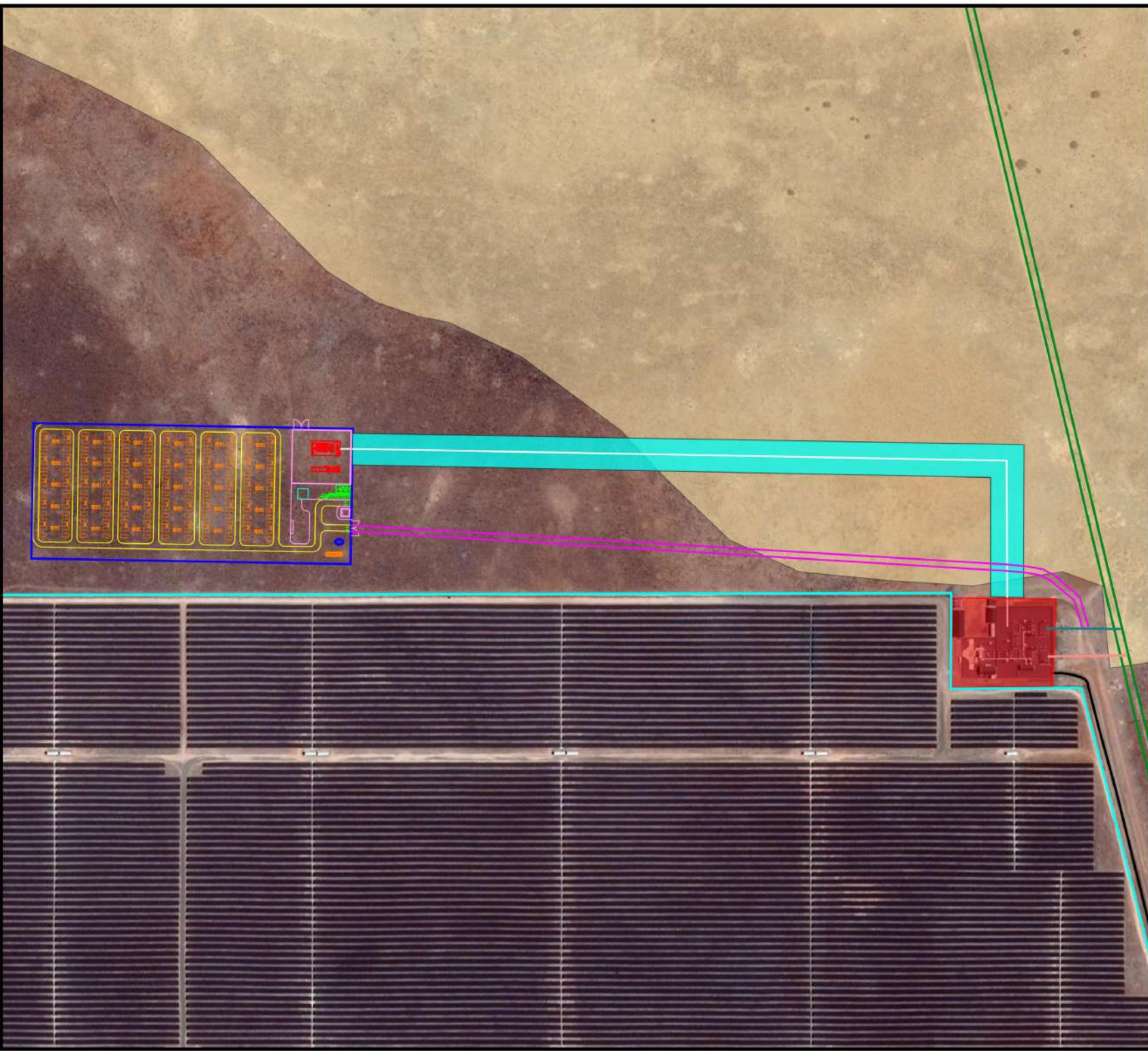
Datum: WGS 84

Date Created: August 2022

Created by: Luke Saunders

Contact: lukes@ncc-group.co.za

Pulida BESS Site Development Plan
Map: Connection to the existing PV substation



Legend

Existing Infrastructure

- Existing Loop-In
- Existing Loop-Out
- Existing Road
- Existing Servitude Line
- Existing Substation

Proposed Infrastructure

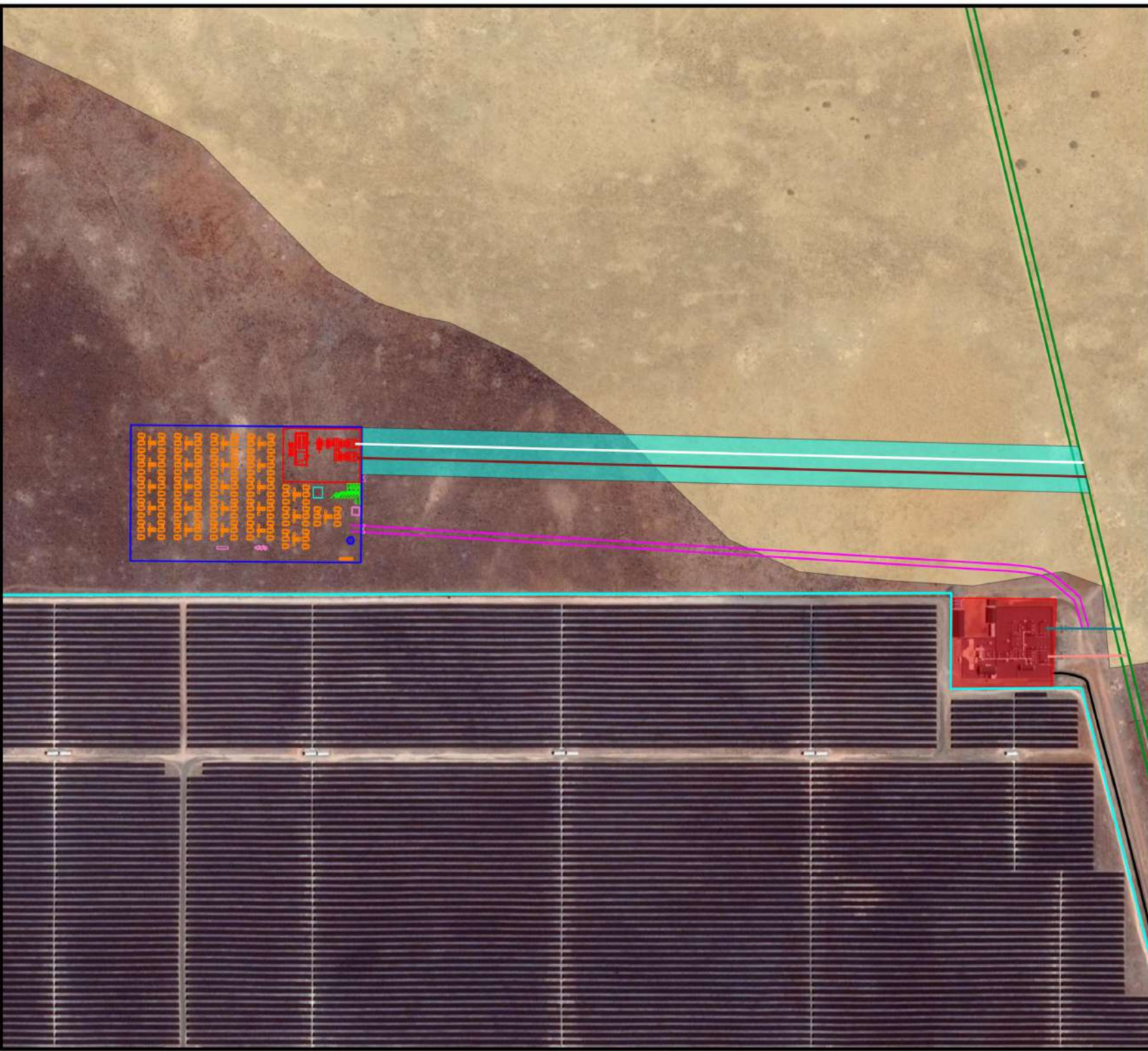
- Battery Energy Storage
- Fence and Boundary
- Laydown Area
- New Access Road
- Operations & Maintenance Building
- Substation
- Internal Road Edges
- Proposed Loop-In
- Proposed Loop-Out
- Dry Watercourse
- Proposed Line Servitude
- Warehouse Container
- Water Tank

ncc

0 100 200 m

Scale: 1:4000
Datum: WGS 84
Date Created: August 2022
Created by: Luke Saunders
Contact: lukes@ncc-group.co.za

Pulida BESS Site Development Plan
Map: Connection to the existing
loop-in and Loop Out lines



Legend

Existing Infrastructure

- Existing Loop-In
- Existing Loop-Out
- Existing Road
- Existing Servitude Line
- Existing Substation

Proposed Infrastructure

- Battery Energy Storage
- Fence and Boundary
- Laydown Area
- New Access Road
- Operations & Maintenance Building
- Substation
- Proposed Loop-In
- Proposed Loop-Out
- Dry Watercourse
- Proposed Line Servitude
- Warehouse Container
- Water Tank

0 100 200 m

Scale: 1:4000
Datum: WGS 84
Date Created: August 2022
Created by: Luke Saunders
Contact: lukes@ncc-group.co.za

Pulida BESS Biodiversity Map

Legend

- Modder Rivier
 - Alternative 1
 - Alternative 2 (Preferred)
- Biodiversity Types
- Ecological Support Area one
 - Ecological Support Area two
 - Other Natural Area



0 1 2 km



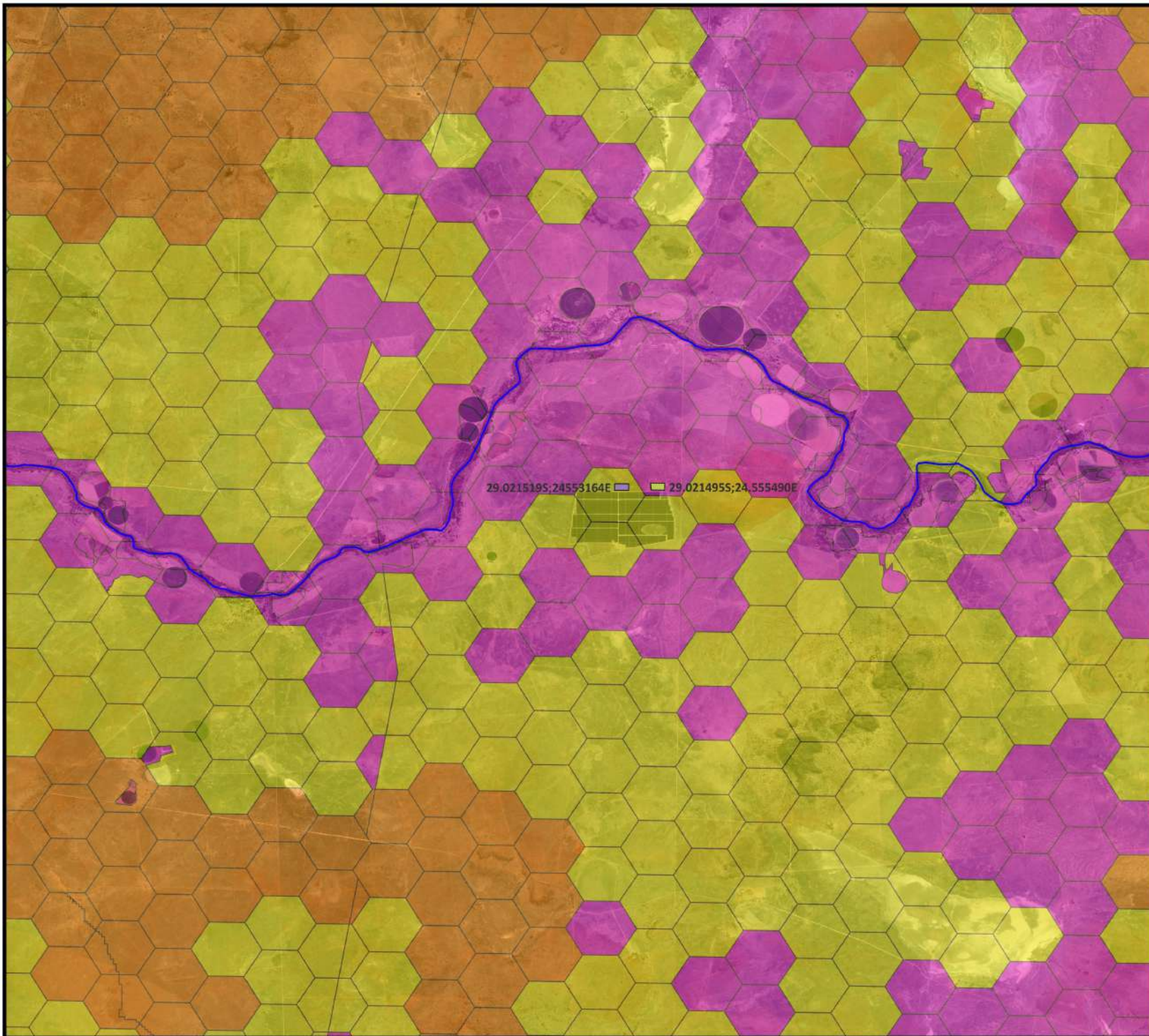
Scale: 1:50000

Datum: WGS 84

Date Created: May 2022

Created by: Luke Saunders

Contact: lukes@ncc-group.co.za



Pulida BESS Freshwater Map

Legend

- Rivers
- Alternative 1
- Alternative 2 (Preferred)
- Dam
- Dry Water Course
- Flood Bank Area
- Non-perennial pan
- Perennial River
- Vlei



Scale: 1:50000
Datum: WGS 84
Date Created: May 2022
Created by: Luke Saunders
Contact: lukes@ncc-group.co.za






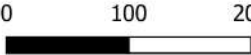
Pulida BESS Vegetation Map

Legend

- Alternative 1
- Alternative 2 (Preferred)

Vegetation Type

- Northern Upper Karoo



Scale: 1:5000
Datum: WGS 84
Date Created: May 2022
Created by: Luke Saunders
Contact: lukes@ncc-group.co.za

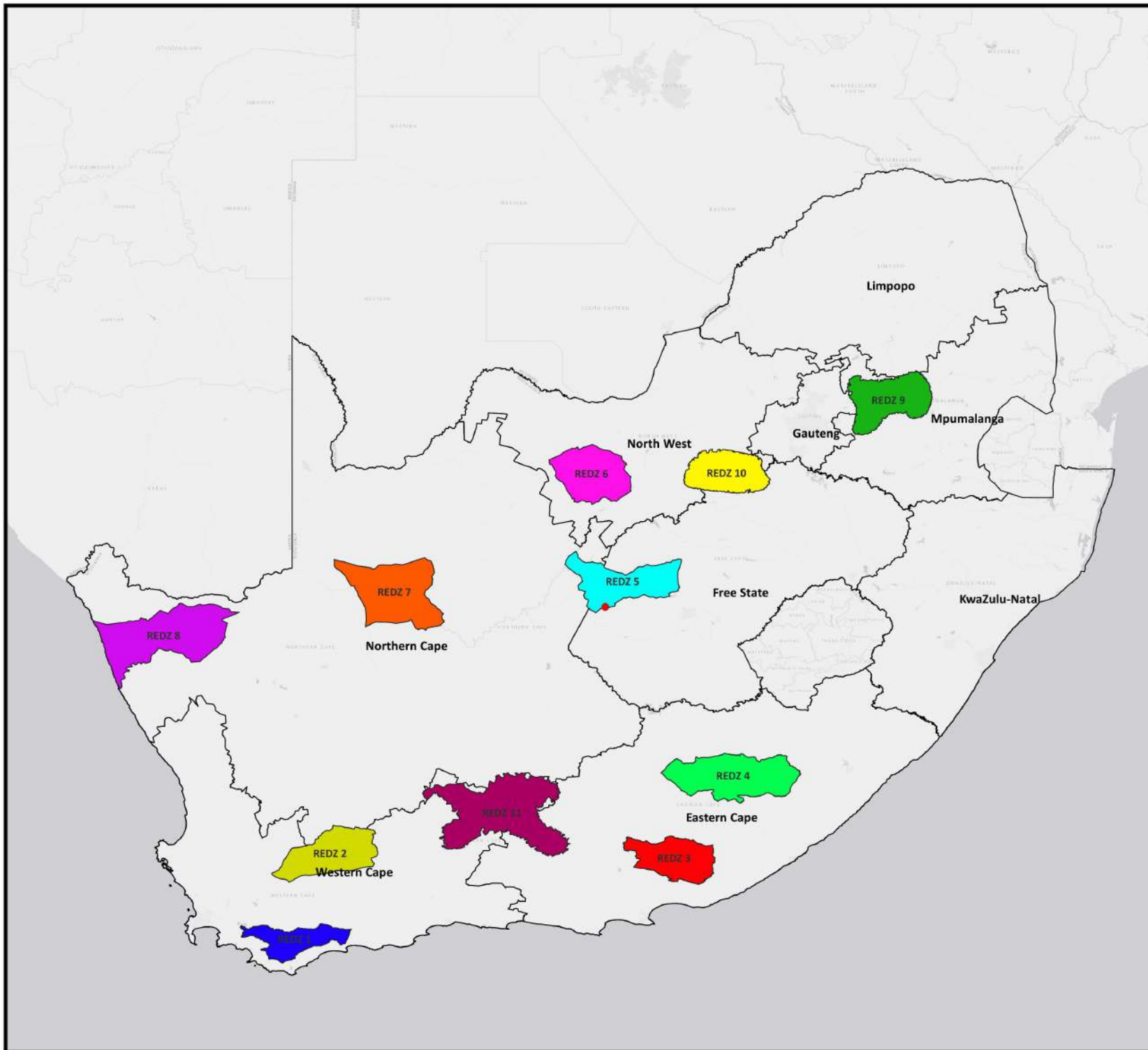
Pulida BESS RED Zone Map

Legend

● Pulida BESS Site

RED Zones

- REDZ 1 - Overberg Wind
- REDZ 2 - Komsberg Wind
- REDZ 3 - Cookhouse Wind
- REDZ 4 - Stormberg Wind
- REDZ 5 - Kimberley Solar
- REDZ 6 - Vryburg Solar
- REDZ 7 - Upington Solar
- REDZ 8 - Springbok Wind
- REDZ 9 - Emalahleni
- REDZ 10 - Klerksdorp
- REDZ 11 - Beaufort West



0 100 200 km

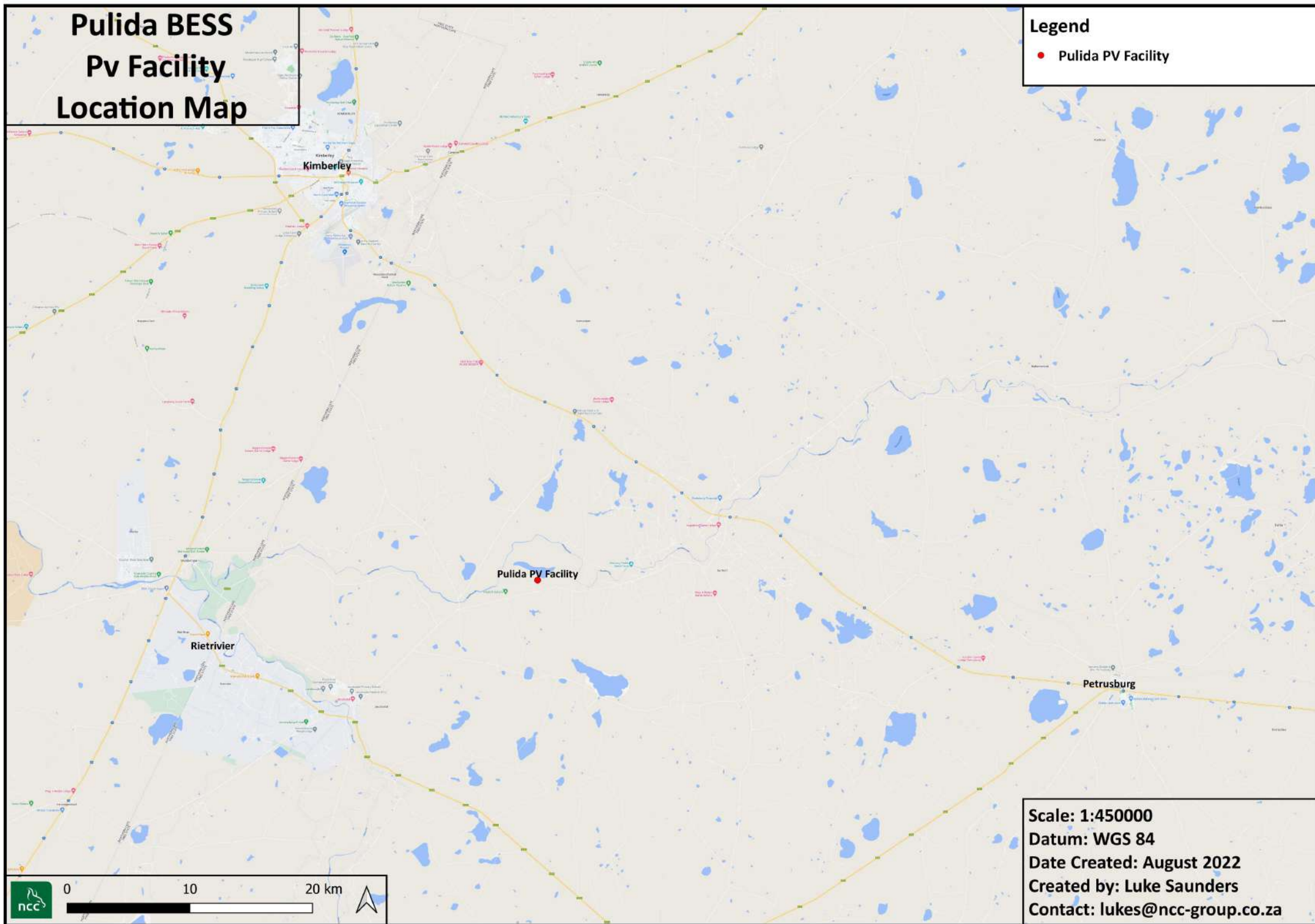


Scale: 1:4500000
Datum: WGS 84
Date Created: May 2022
Created by: Luke Saunders
Contact: lukes@ncc-group.co.za

Pulida BESS Pv Facility Location Map

Legend

- Pulida PV Facility



Pulida PV Facility

Rietrivier

Kimberley

Petrusburg

Scale: 1:450000

Datum: WGS 84

Date Created: August 2022

Created by: Luke Saunders

Contact: lukes@ncc-group.co.za



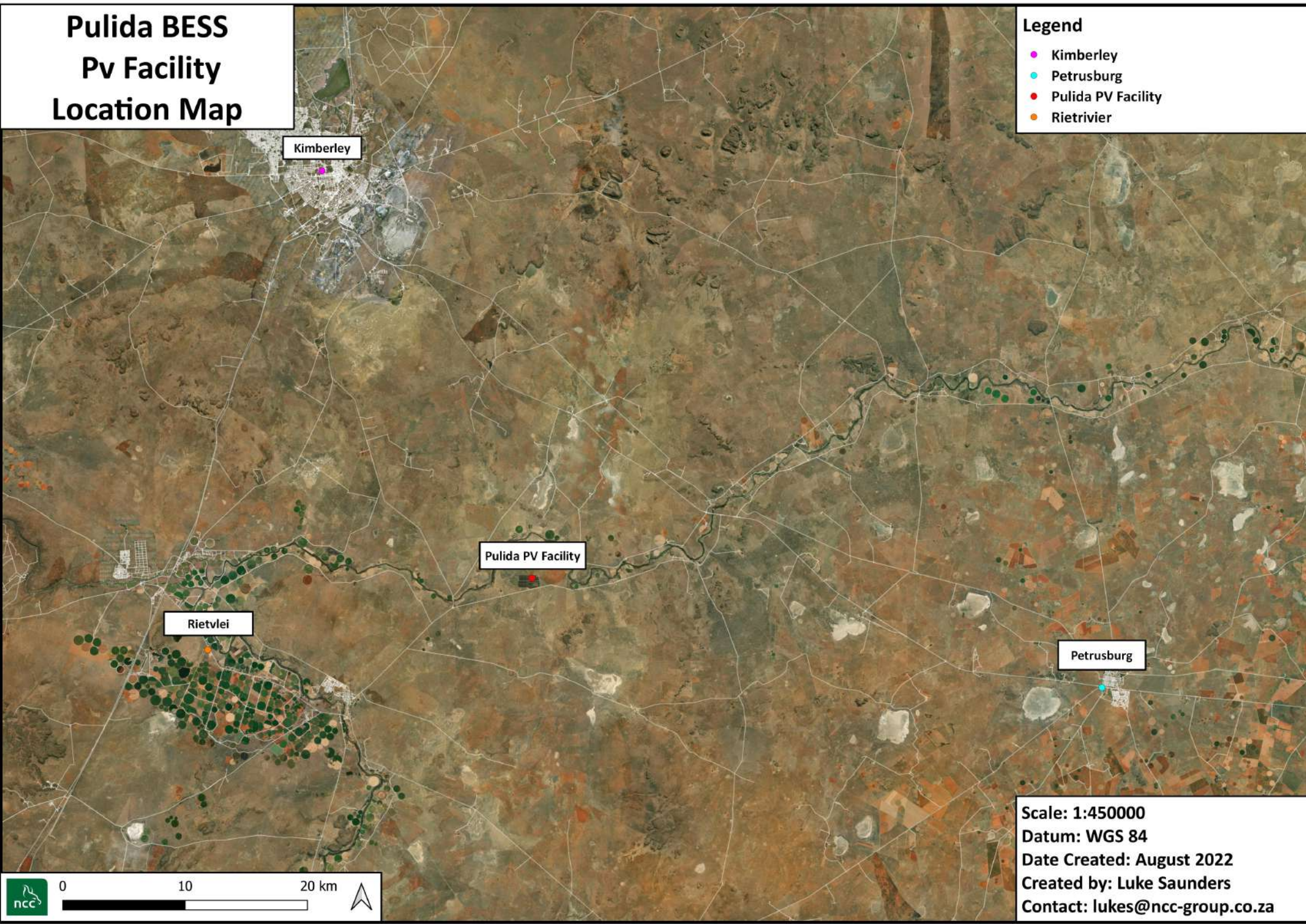
0 10 20 km



Pulida BESS Pv Facility Location Map

Legend

- Kimberley
- Petrusburg
- Pulida PV Facility
- Rietrivier

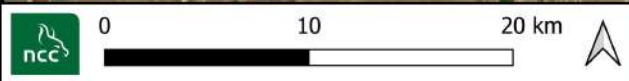


Kimberley

Pulida PV Facility

Rietvlei

Petrusburg



Scale: 1:450000
Datum: WGS 84
Date Created: August 2022
Created by: Luke Saunders
Contact: lukes@ncc-group.co.za