

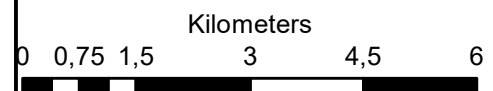
**Dyasonsklip 5 Solar PV  
Farm 454 Dyasonsklip  
Upington**

**Legend**

- Farm\_454
- DK 5 Footprint
- DK 5 Grid connections
- Access Roads
- Grid\_Corridor\_Properties
- ARTERIAL ROUTE
- MAIN ROAD
- NATIONAL ROUTE
- Perennial River

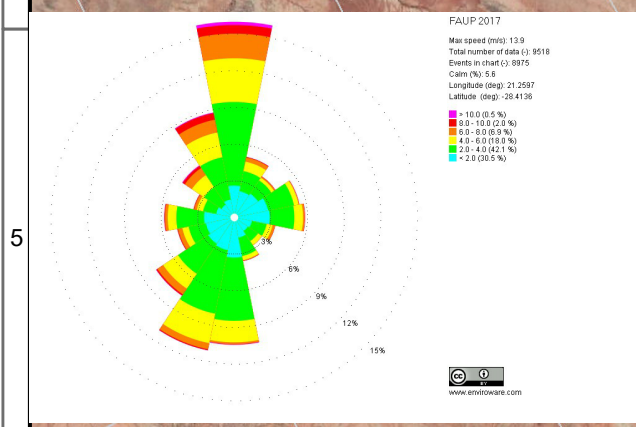
**Notes**

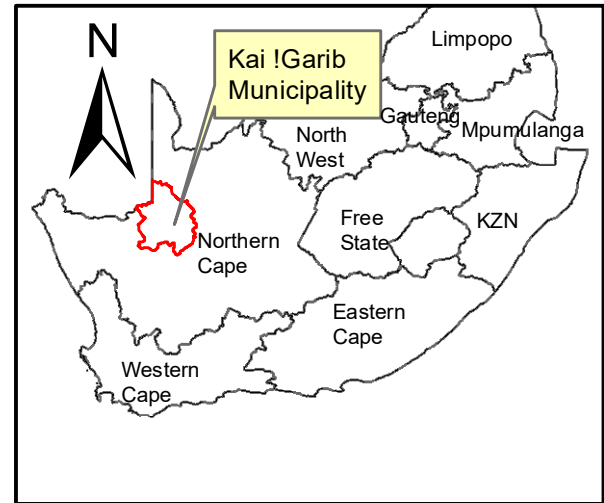
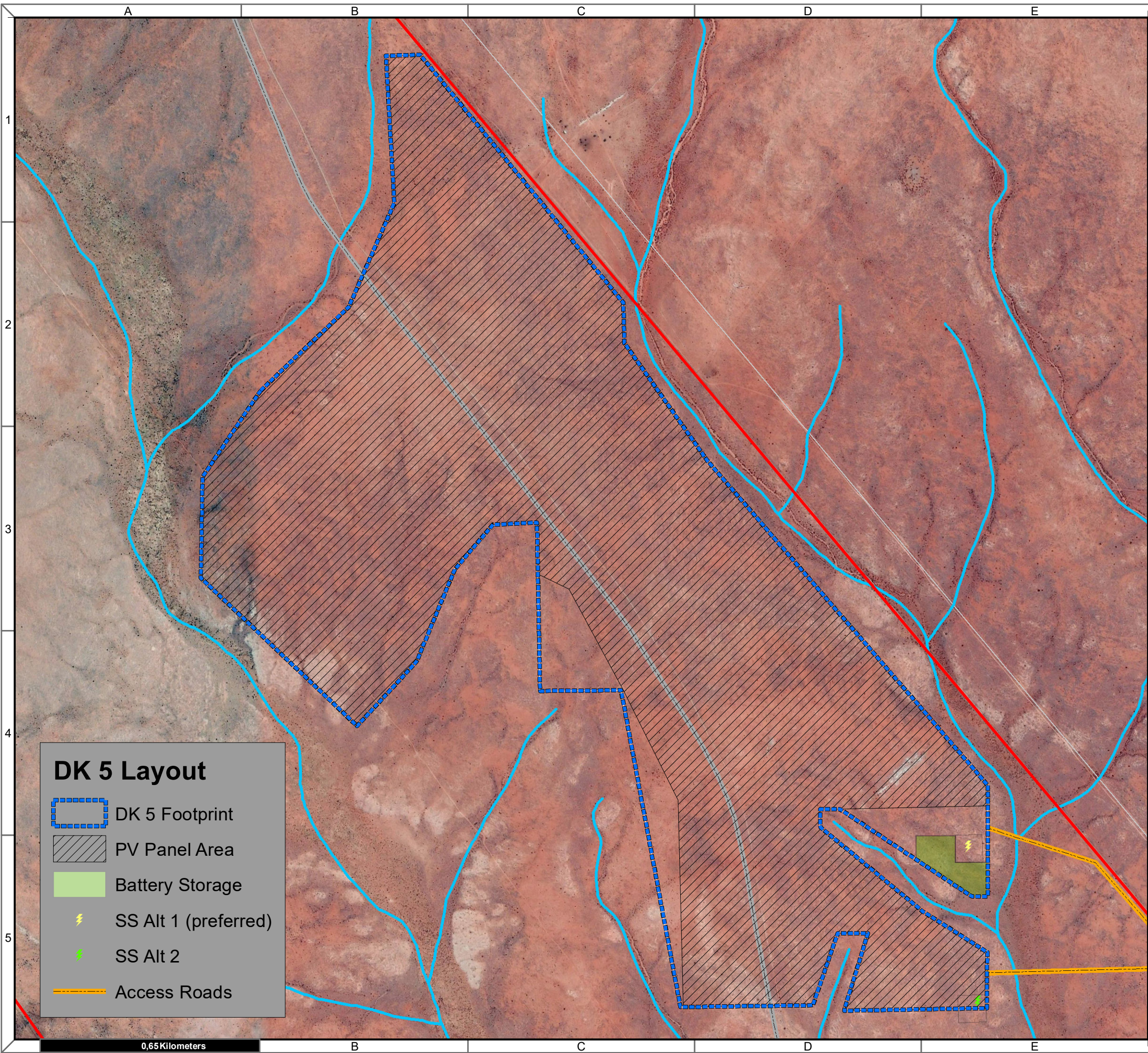
- Map Scale is 1: 100 000 when printed on A3
- Aerial image courtesy of Google Earth Pro 2020
- Imagery date February 2019
- Wind data courtesy of Metar 2017
- Nearest Metar station is Upington Airport (FAUP) approx. 30kms ENE



Map Drawn By:	Date	Reference
Melissa Mackay	2020/05/25	KAI633





**Cape Environmental Assessment Practitioners (Pty) Ltd**  
 Telephone: +27 44 874 0365  
 Facsimile: +27 44 874 0432  
 Web: www.cape-eaprac.co.za  
 17 Progress St  
 PO Box 2070  
 George 6530





**Dyasonsklip 5 Solar PV  
Farm 454 Dyasonsklip  
Upington**

**Legend**

-  Farm\_454
-  OTHER ACCESS
-  Perennial Rivers
-  Non-Perennial Rivers

**Notes**

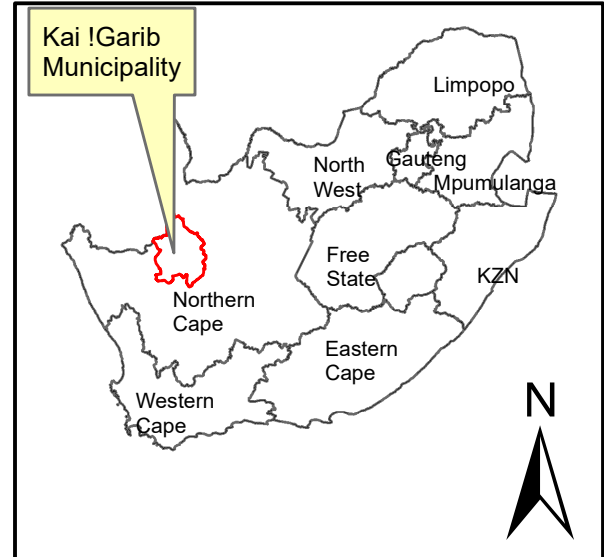
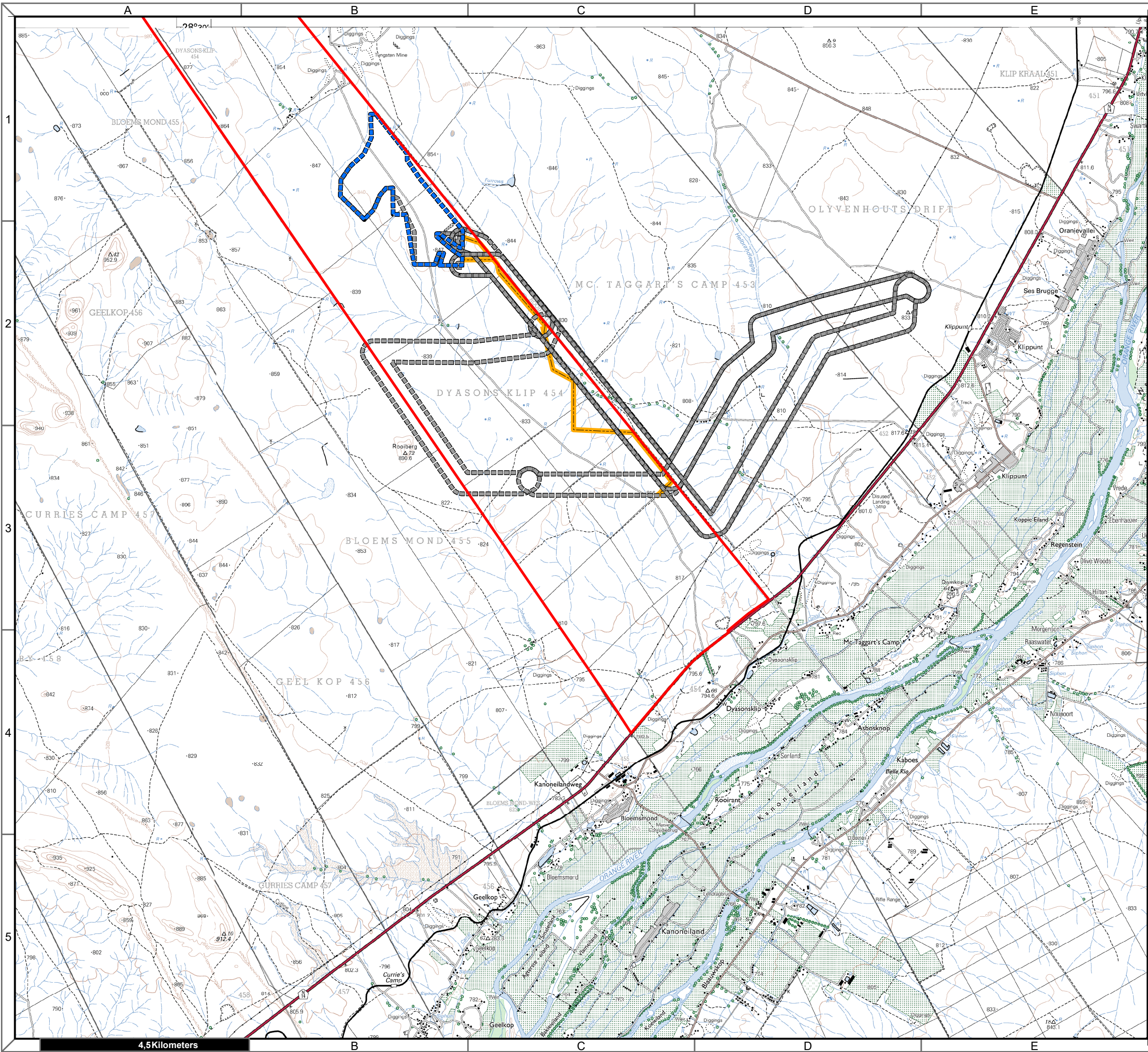
- Map Scale is 1: 11 000 when printed on A3
- Aerial image courtesy of Google Earth Pro 2020
- Imagery date February 2019

Kilometers

0   0,1   0,2   0,4   0,6   0,8





Map Drawn By:	Date	Reference
Melissa Mackay	2020/05/25	KAI633

**Cape Environmental Assessment Practitioners (Pty) Ltd**  
 Reg. No. 2008/004627/07  
 Telephone: +27 44 874 0365  
 Facsimile: +27 44 874 0432  
 Web: www.cape-eaprac.co.za  
 17 Progress St  
 PO Box 2070  
 George 6530

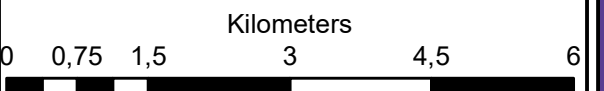


**Dyasonsklip 5 Solar PV  
Farm 454 Dyasonsklip  
Upington**

**Legend**

-  Farm\_454
-  DK 5 Footprint
-  DK 5 Grid connections
-  Access Roads

**Notes**  
 - Map Scale is 1: 80 000 when printed on A3  
 - Topographical data courtesy of Surveyor General  
 - Imagery date 2009

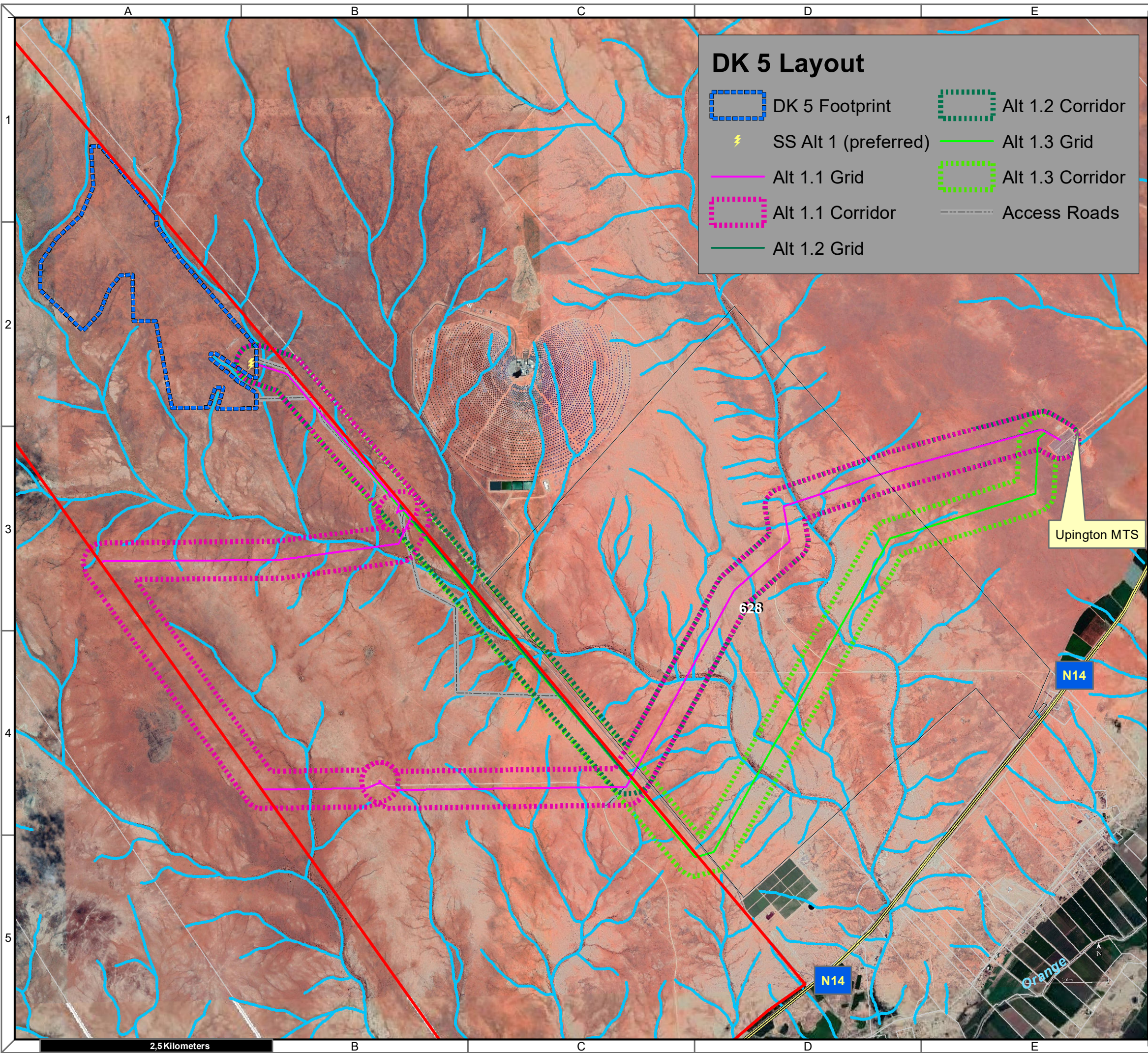


Map Drawn By:	Date	Reference
Melissa Mackay	2020/05/25	KAI632

**Cape Environmental Assessment Practitioners (Pty) Ltd**  
 Telephone: +27 44 874 0365  
 Facsimile: +27 44 874 0432  
 Web: www.cape-eaprac.co.za  
 17 Progress St  
 PO Box 2070  
 George 6530

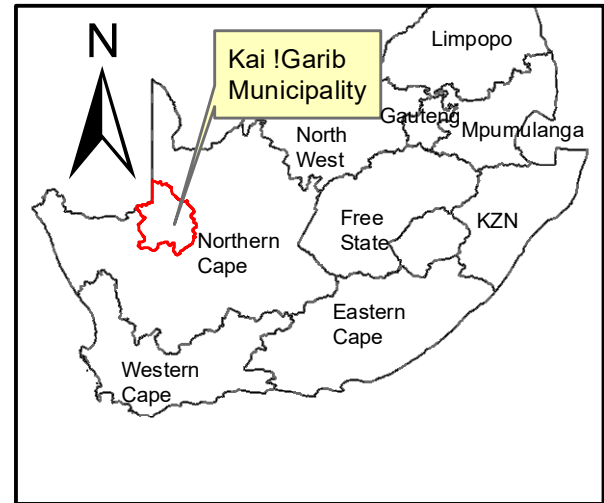
**1:50 000 TOPOGRAPHICAL PLANS**

4,5 Kilometers



### DK 5 Layout

	DK 5 Footprint		Alt 1.2 Corridor
	SS Alt 1 (preferred)		Alt 1.3 Grid
	Alt 1.1 Grid		Alt 1.3 Corridor
	Alt 1.1 Corridor		Access Roads
	Alt 1.2 Grid		



**Dyasonsklip 5 Solar PV  
Farm 454 Dyasonsklip  
Upington**

### Legend

	Farm_454
	Grid_Corridor_Properties
	ARTERIAL ROUTE
	MAIN ROAD
	NATIONAL ROUTE
	Perennial Rivers
	Non-Perennial Rivers

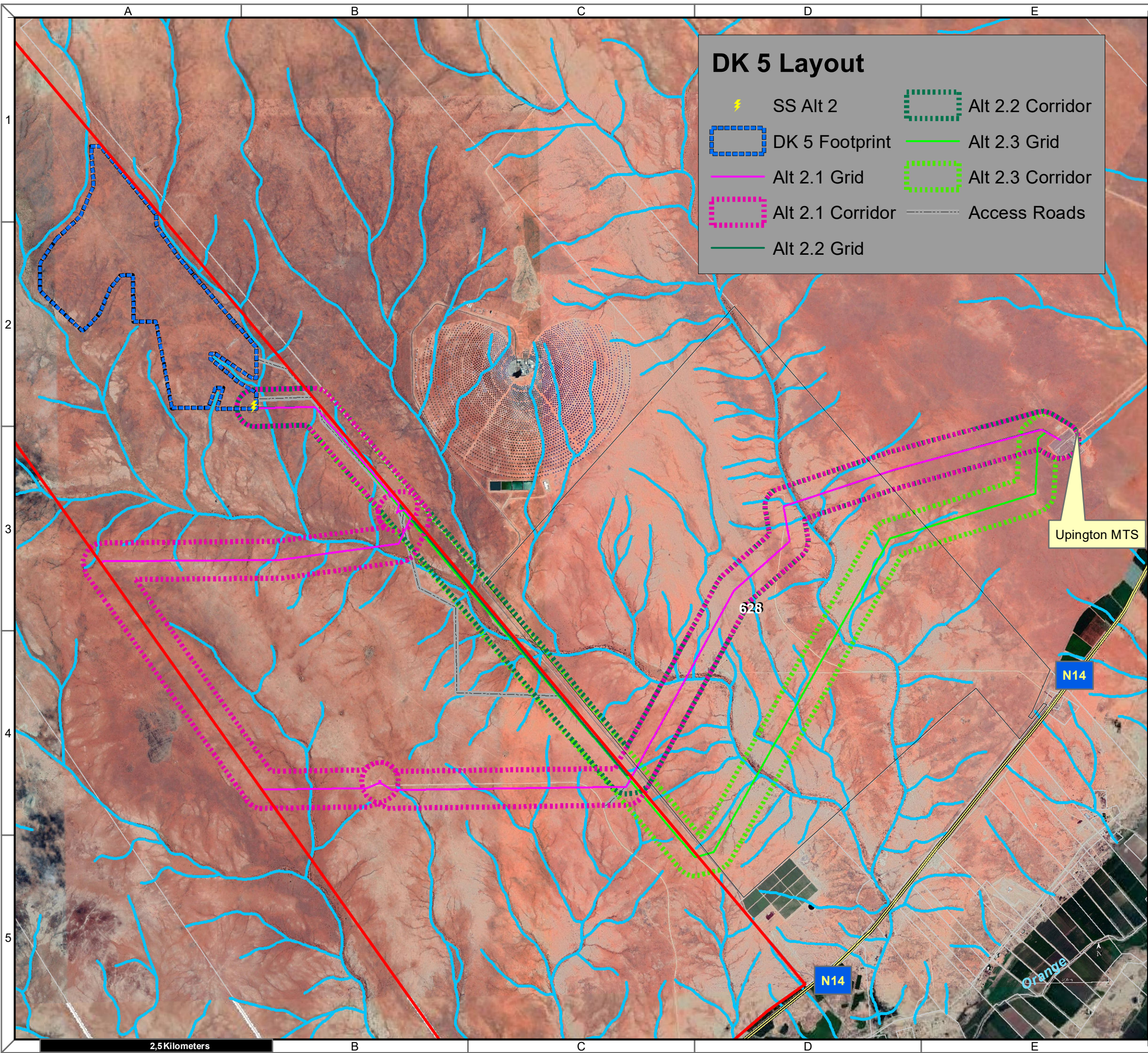
### Notes

- Map Scale is 1: 40 000 when printed on A3
- Aerial image courtesy of Google Earth Pro 2020
- Imagery date February 2019
- Alternative 1 Grid connections are proposed for Substation 1 (preferred option)

Map Drawn By:	Date	Reference
Melissa Mackay	2020/05/25	KAI633

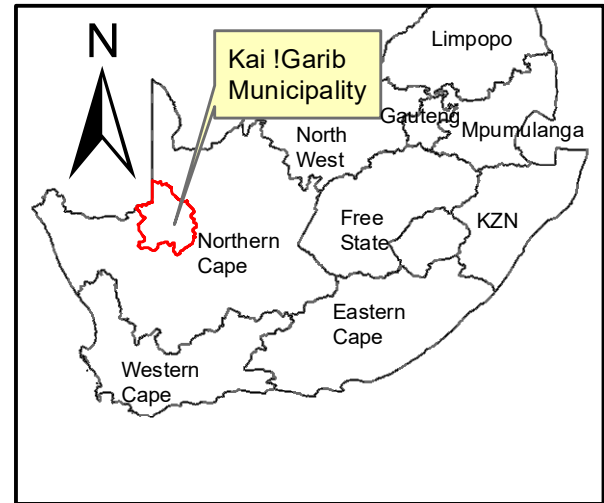
**Cape Environmental Assessment Practitioners (Pty) Ltd**  
 Reg. No. 2008/004627/07  
 Telephone: +27 44 874 0365  
 Facsimile: +27 44 874 0432  
 Web: www.cape-eaprac.co.za  
 17 Progress St  
 PO Box 2070  
 George 6530

**AREA LOCATION PLANS WITH ALTERNATIVE 1 GRID CONNECTIONS**



### DK 5 Layout

	SS Alt 2		Alt 2.2 Corridor
	DK 5 Footprint		Alt 2.3 Grid
	Alt 2.1 Grid		Alt 2.3 Corridor
	Alt 2.1 Corridor		Access Roads
	Alt 2.2 Grid		



**Dyasonsklip 5 Solar PV  
Farm 454 Dyasonsklip  
Upington**

### Legend

	Farm_454
	Grid_Corridor_Properties
	ARTERIAL ROUTE
	MAIN ROAD
	NATIONAL ROUTE
	Perennial Rivers
	Non-Perennial Rivers

### Notes

- Map Scale is 1: 40 000 when printed on A3
- Aerial image courtesy of Google Earth Pro 2020
- Imagery date February 2019
- Alternative 21 Grid connections are proposed for Substation 2

Kilometers  
0 0,375 0,75 1,5 2,25 3

Map Drawn By:	Date	Reference
Melissa Mackay	2020/05/25	KAI633

**Cape Environmental Assessment Practitioners (Pty) Ltd**  
 Reg. No. 2008/004627/07  
 Telephone: +27 44 874 0365  
 Facsimile: +27 44 874 0432  
 Web: www.cape-eaprac.co.za  
 17 Progress St  
 PO Box 2070  
 George 6530

**AREA LOCATION PLANS WITH ALTERNATIVE 2 GRID CONNECTIONS**