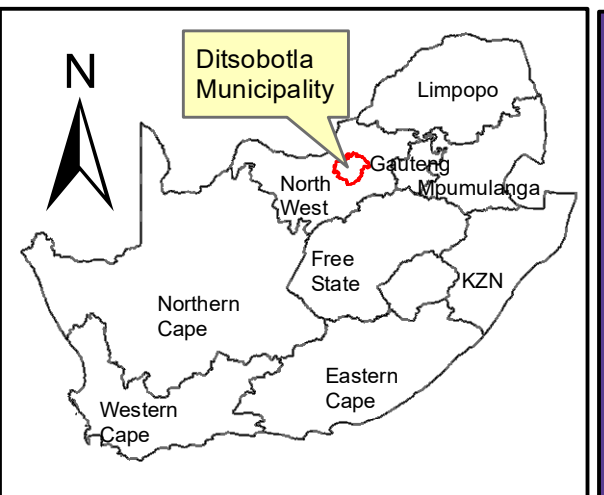


Layout

- Access Road

Hillardia PV

- Hillardia PV
- 100m MV Corridor



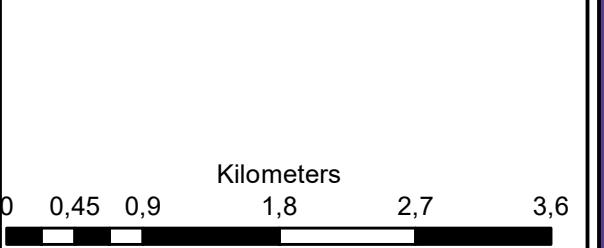
**Hillardia PV
Houthaalboomen North
Portions 2, 3 & 4 of Farm 31
Lichtenburg**

Legend

- Portion_2_of_Farm_31
- Portion_3_of_Farm_31
- Portion_4_of_Farm_31
- MAIN ROAD
- OTHER ACCESS
- Perennial Rivers
- Non-Perennial Rivers

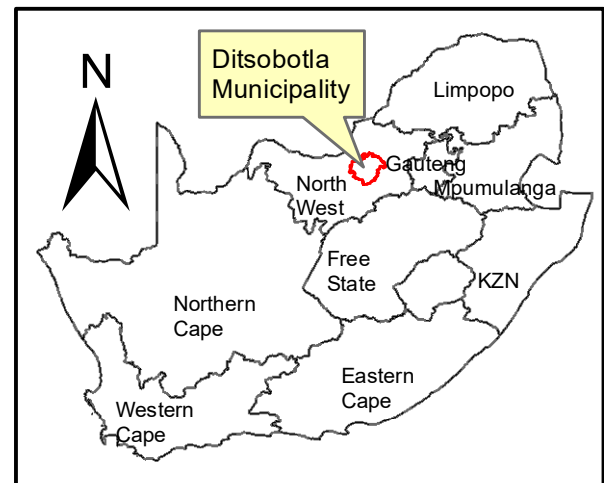
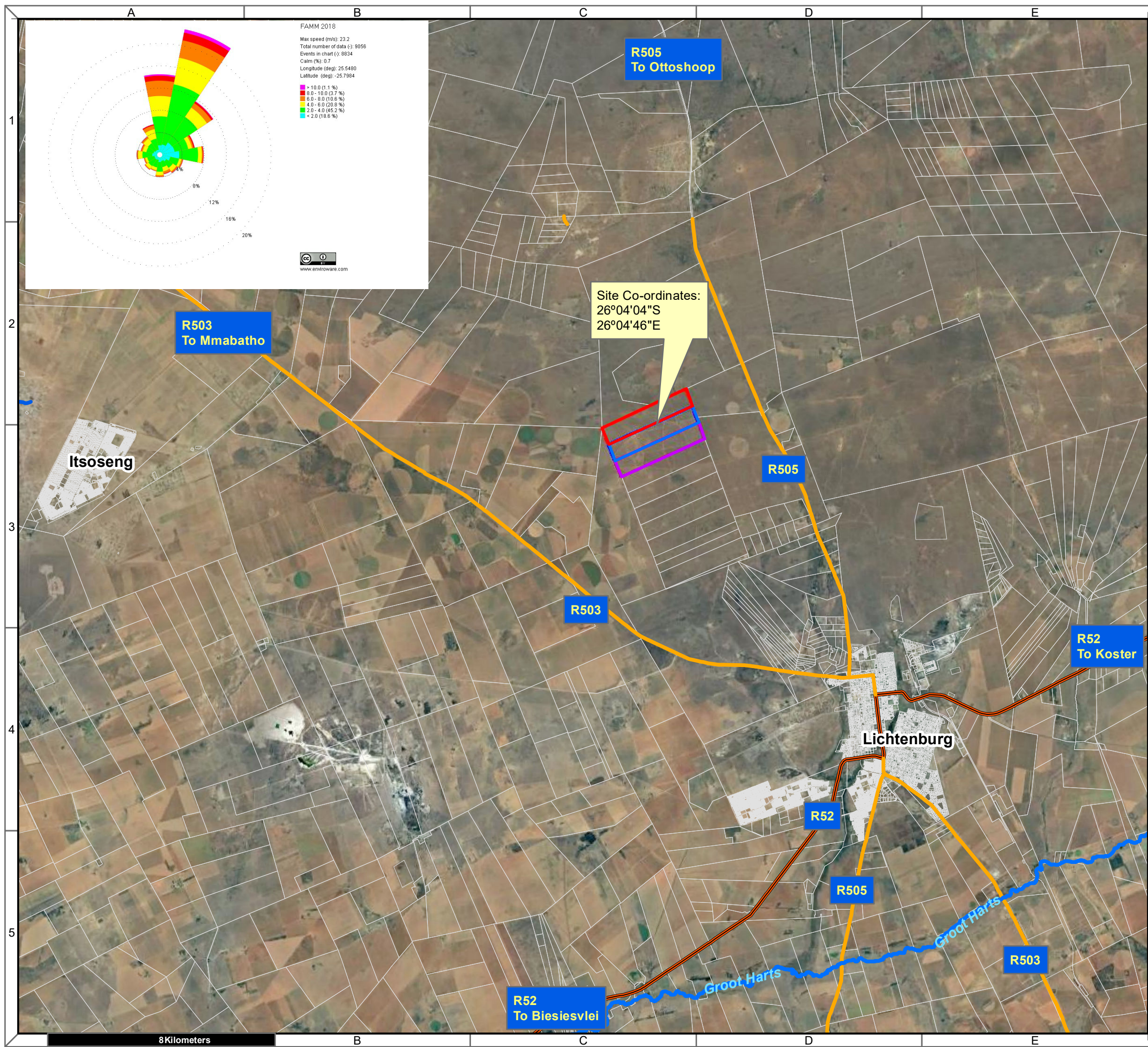
Notes

- Map Scale is 1: 50 000 when printed on A3
- Aerial image courtesy of Google Earth Pro 2022
- Imagery date May 2021



Map Drawn By:	Date	Reference
Melissa Mackay	2022/03/02	DIT724

Cape Environmental Assessment Practitioners (Pty) Ltd
 Telephone: +27 44 874 0365
 Facsimile: +27 44 874 0432
 Web: www.cape-eaprac.co.za
 17 Progress St
 PO Box 2070
 George 6530



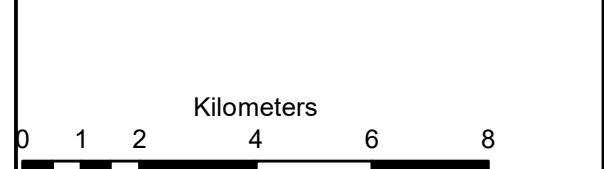
**Houthaalboomen North
Portions 2, 3 & 4 of Farm 31
Lichtenburg**

Legend

- Portion_2_of_Farm_31
- Portion_3_of_Farm_31
- Portion_4_of_Farm_31
- Perennial Rivers
- ARTERIAL ROUTE
- NATIONAL ROUTE
- MAIN ROAD

Notes

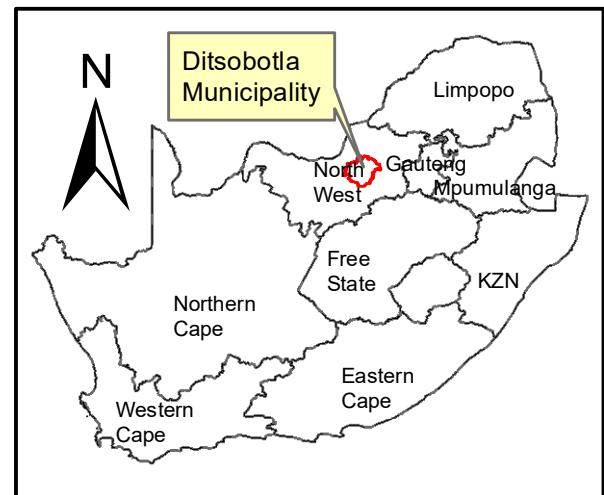
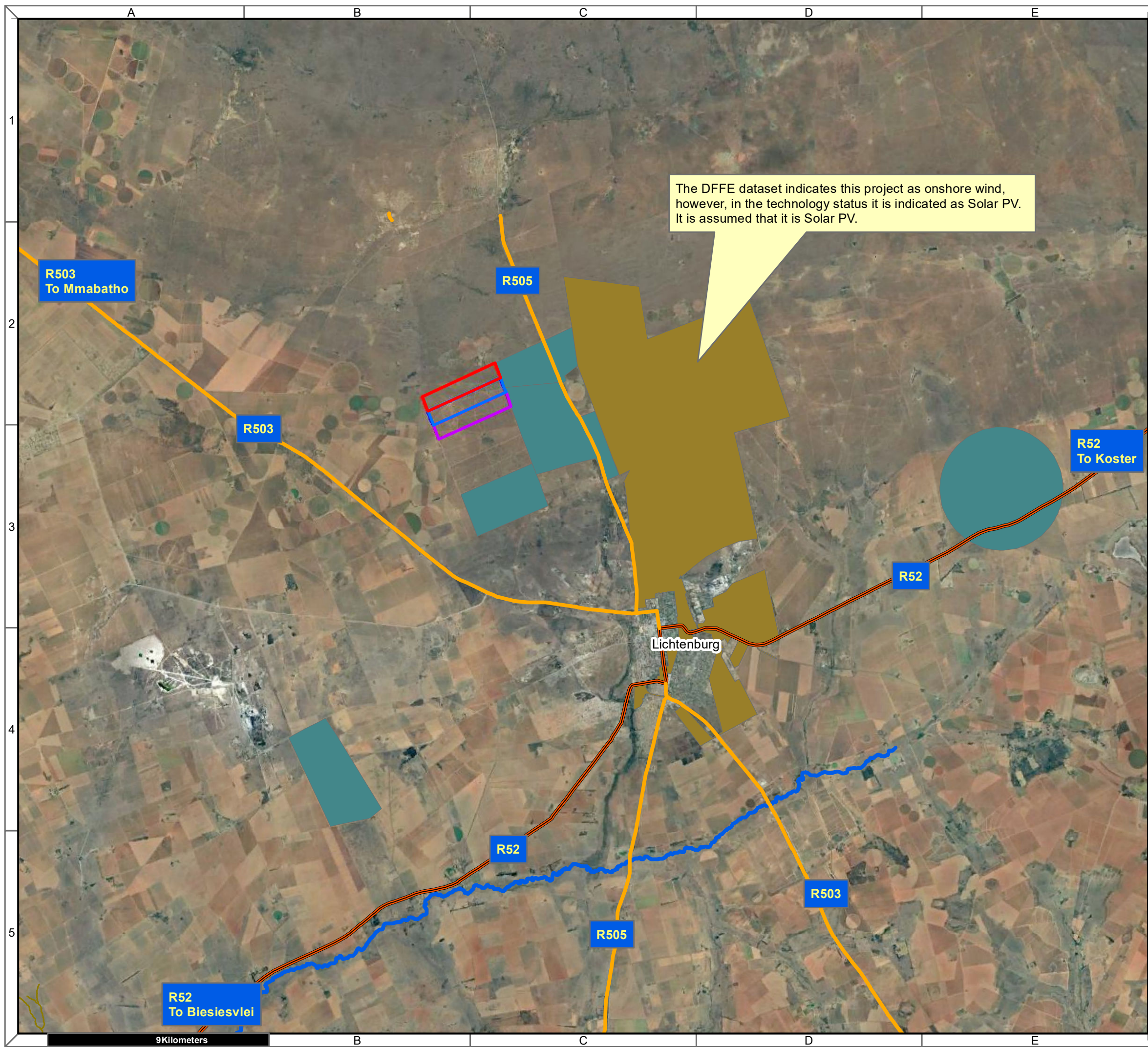
- Map Scale is 1: 130 000 when printed on A3
- Aerial image courtesy of Google Earth Pro 2022
- Imagery date May 2021
- Wind data courtesy of Metar 2018
- Nearest Metar station is Mmabatho Airport (FAMM) approx. 59kms on heading 299.95 degrees



Map Drawn By:	Date	Reference
Melissa Mackay	2022/03/01	DIT724

Cape Environmental Assessment Practitioners (Pty) Ltd
 Telephone: +27 44 874 0365
 Facsimile: +27 44 874 0432
 Web: www.cape-eaprac.co.za

17 Progress St
 PO Box 2070
 George 6530



**Houthaalboomen North
Portions 2, 3 & 4 of Farm 31
Lichtenburg**

Legend

- Portion_2_of_Farm_31
- Portion_3_of_Farm_31
- Portion_4_of_Farm_31
- ARTERIAL ROUTE
- MAIN ROAD
- Perennial Rivers
- Onshore Wind
- Solar PV

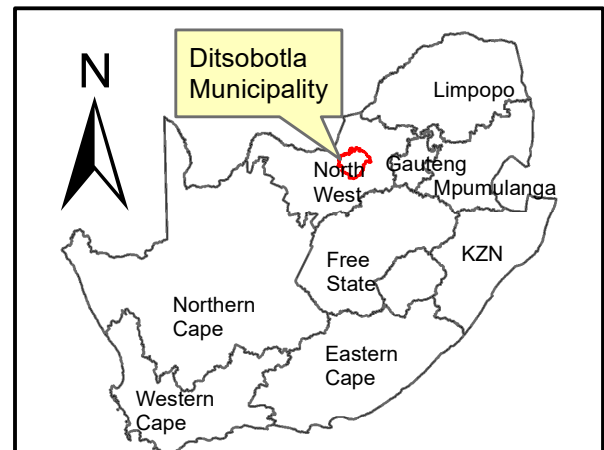
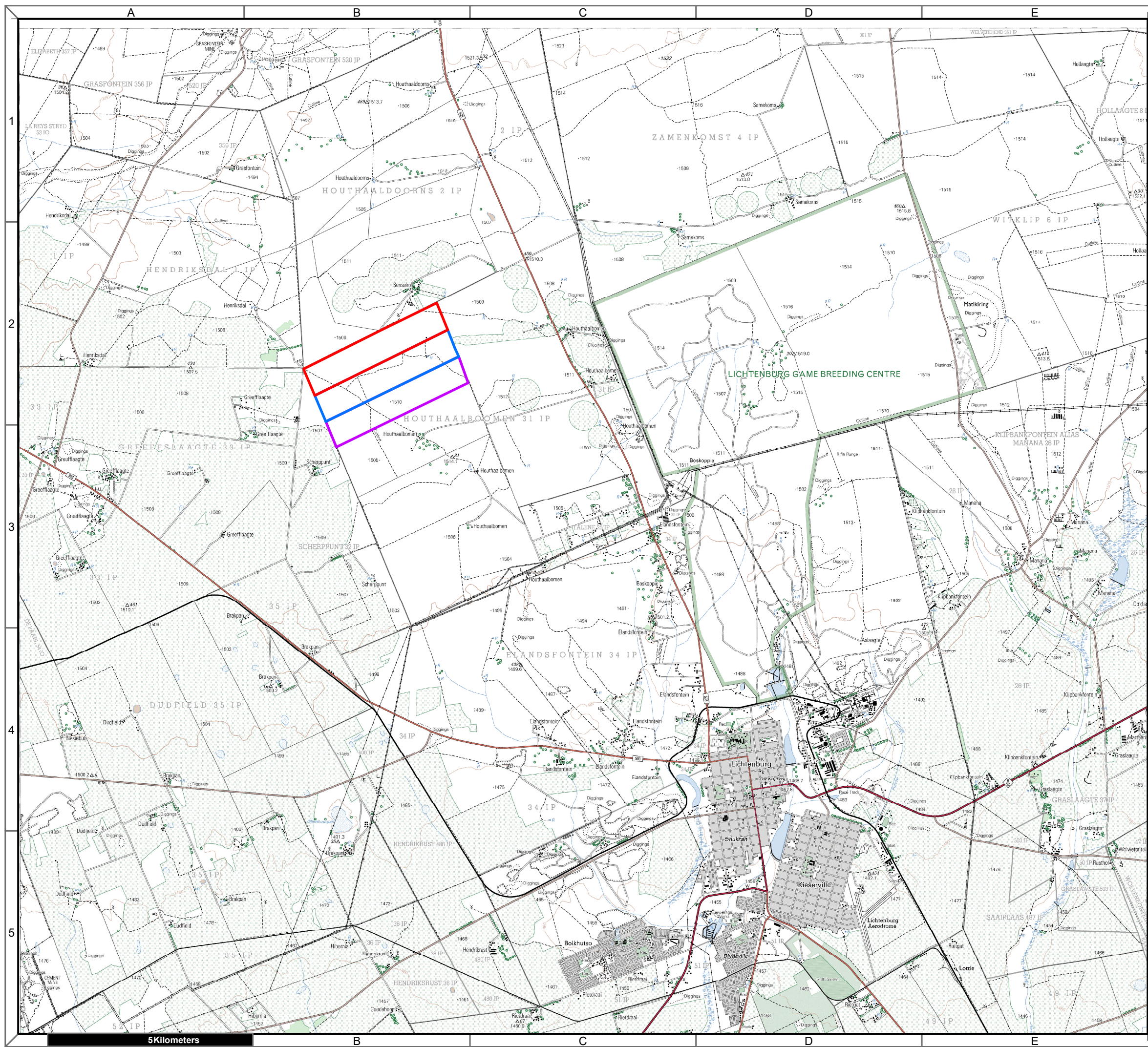
Notes

- Map Scale is 1: 150 000 when printed on A3
- Aerial image courtesy of Google Earth Pro 2022
- Imagery date May 2021
- Application data courtesy of DFFE EGIS

Kilometers

Map Drawn By:	Date	Reference
Melissa Mackay	2022/03/02	DIT724

Cape Environmental Assessment Practitioners (Pty) Ltd
 Reg. No. 2008/004627/07
 Telephone: +27 44 874 0365
 Facsimile: +27 44 874 0432
 Web: www.cape-eaprac.co.za
 17 Progress St
 PO Box 2070
 George 6530

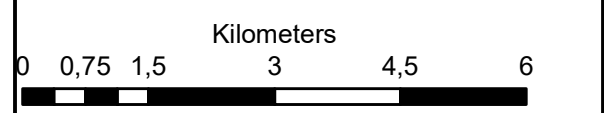


Houthaalboomen North Portions 2, 3 & 4 of Farm 31 Lichtenburg

- Legend**
- Portion_2_of_Farm_31
 - Portion_3_of_Farm_31
 - Portion_4_of_Farm_31

Notes

- Map Scale is 1: 90 000 when printed on A3
- Topographical data courtesy of Surveyor General
- Imagery date 2006



Map Drawn By:	Date	Reference
Melissa Mackay	2022/03/02	DIT724

Cape Environmental Assessment Practitioners (Pty) Ltd
 Telephone: +27 44 874 0365
 Facsimile: +27 44 874 0432
 Web: www.cape-eaprac.co.za

17 Progress St
 PO Box 2070
 George 6530

1:50 000 TOPOGRAPHICAL PLANS

5 Kilometers