

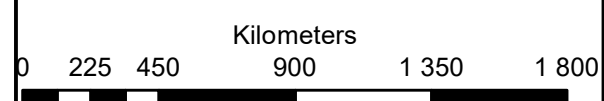
Roan PV 1
Farm 337 Renosterfontein
Hartbeesfontein

Legend

- Roan PV Site
- Grid Corridor
- Roan 1 Access Road
- Roan 1 PV
- Perennial Rivers
- Non-Perennial Rivers
- SECONDARY ROAD
- OTHER ACCESS

Notes

- Map Scale is 1: 30 000 when printed on A3
- Aerial image courtesy of Google Earth Pro 2021
- Imagery date April 2021



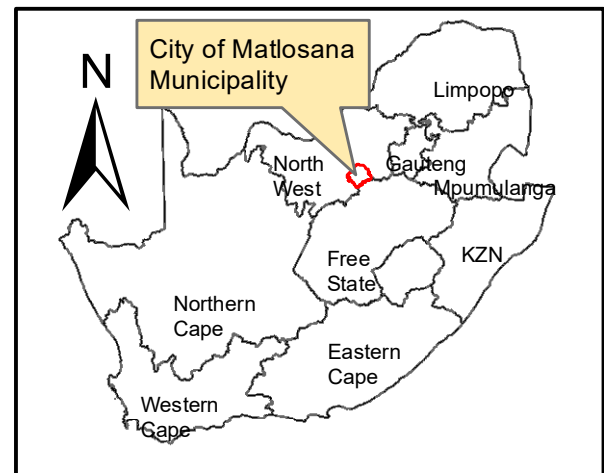
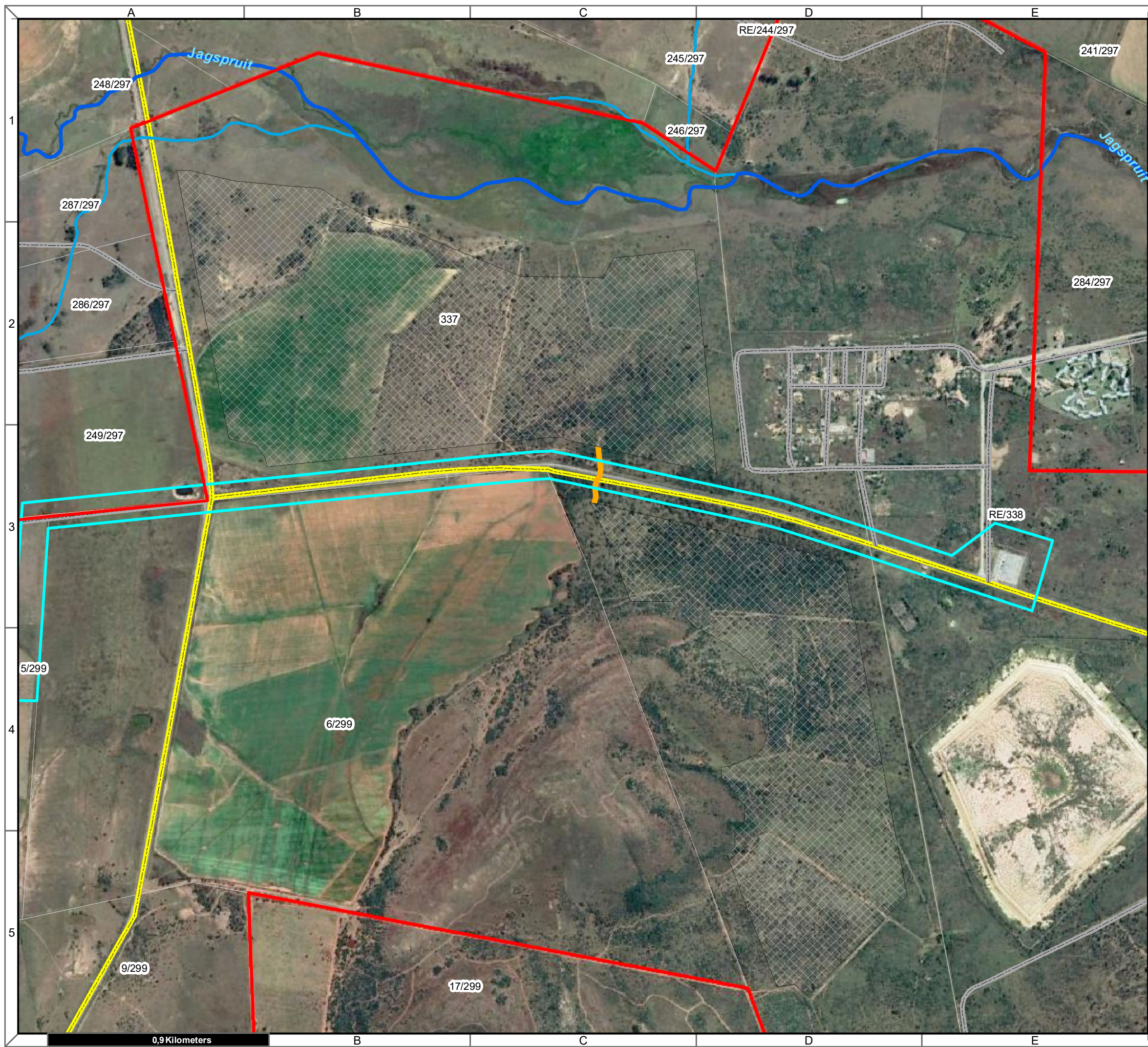
Map Drawn By:	Date	Reference
Melissa Mackay	2022/04/14	CML715

Cape Environmental Assessment Practitioners (Pty) Ltd
 Reg. No. 2008/004627/07

Telephone: +27 44 874 0365
 Facsimile: +27 44 874 0432
 Web: www.cape-eaprac.co.za

17 Progress St
 PO Box 2070
 George 6530

AREA LOCATION PLAN



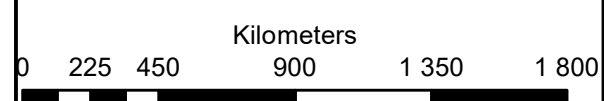
Roan PV 1
Farm 337 Renosterfontein
Hartbeesfontein

Legend

- Roan PV Site
- Grid Corridor
- Roan 1 Access Road
- Roan 1 PV
- Perennial Rivers
- Non-Perennial Rivers
- SECONDARY ROAD
- OTHER ACCESS

Notes

- Map Scale is 1: 15 000 when printed on A3
- Aerial image courtesy of Google Earth Pro 2021
- Imagery date April 2021

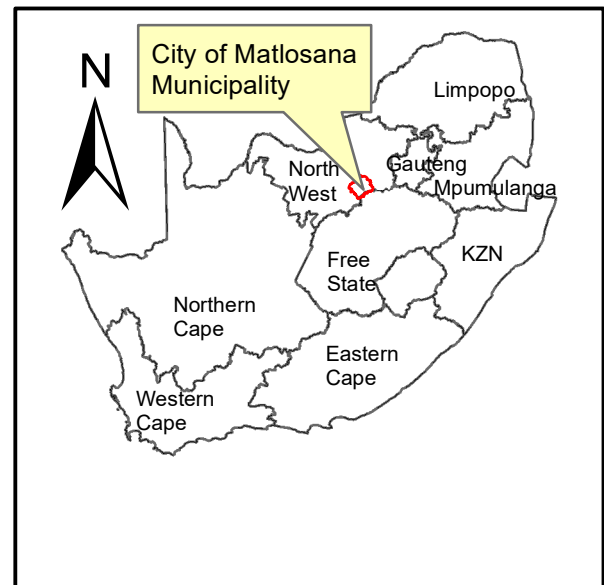
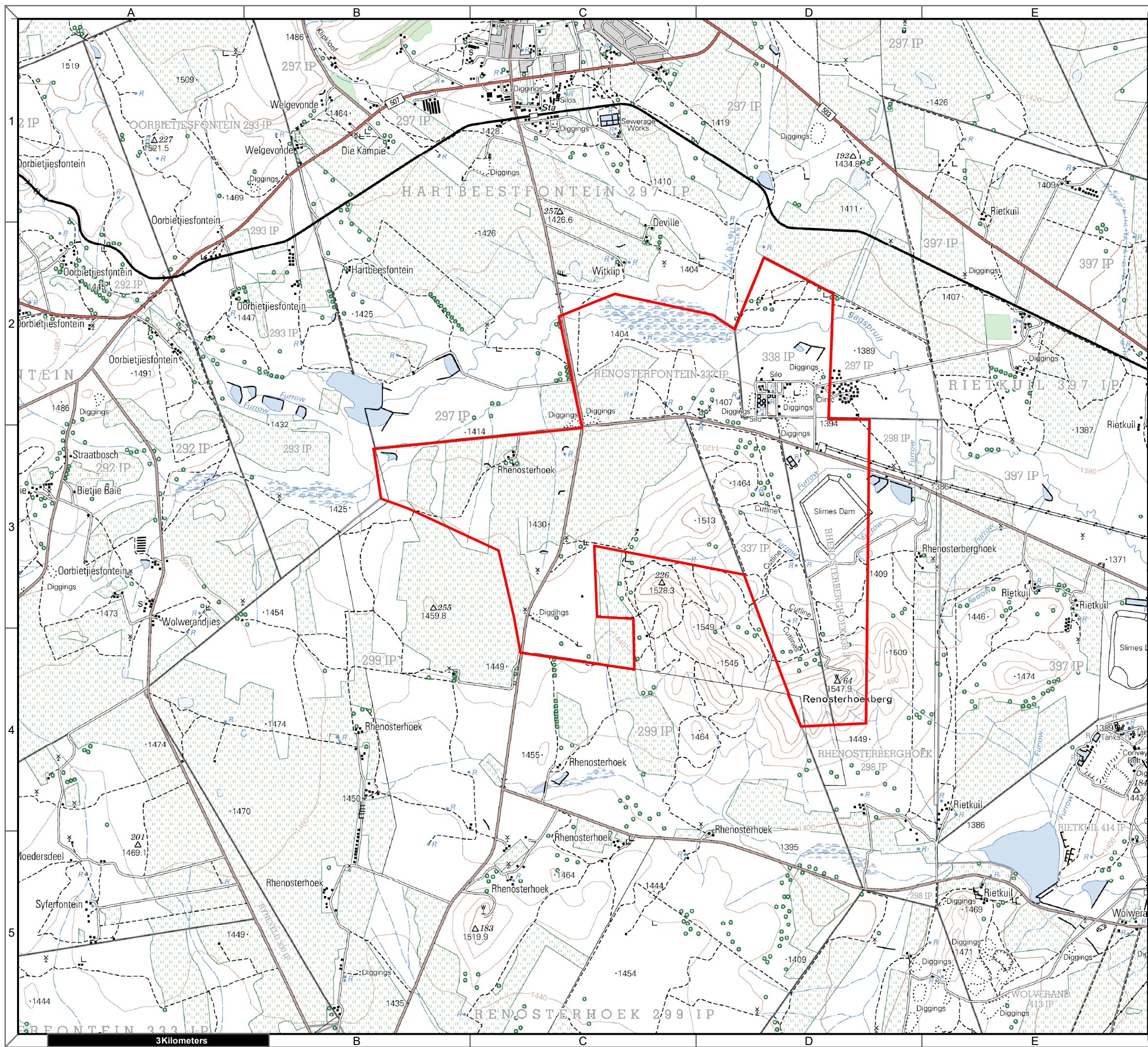


Map Drawn By:	Date	Reference
Melissa Mackay	2022/04/14	CML715

Cape Environmental Assessment Practitioners (Pty) Ltd
 Reg. No. 2008/004627/07

Telephone: +27 44 874 0365
 Facsimile: +27 44 874 0432
 Web: www.cape-eaprac.co.za

17 Progress St
 PO Box 2070
 George 6530



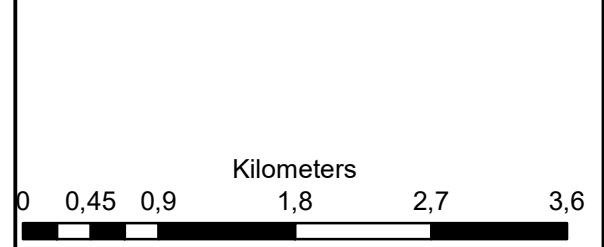
Roan PV Cluster Hartbeesfontein

Legend

Roan PV Site

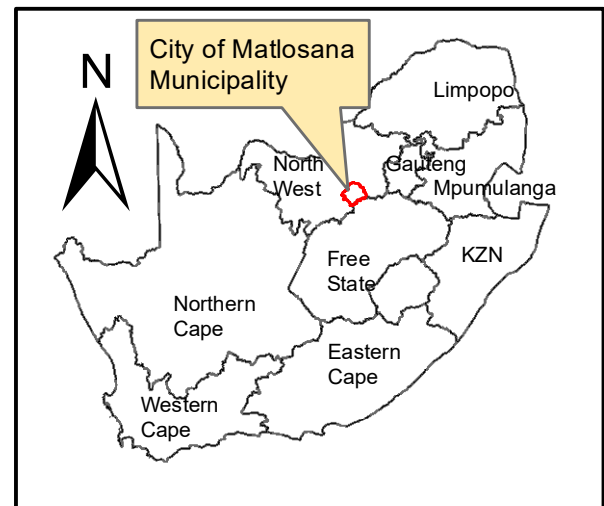
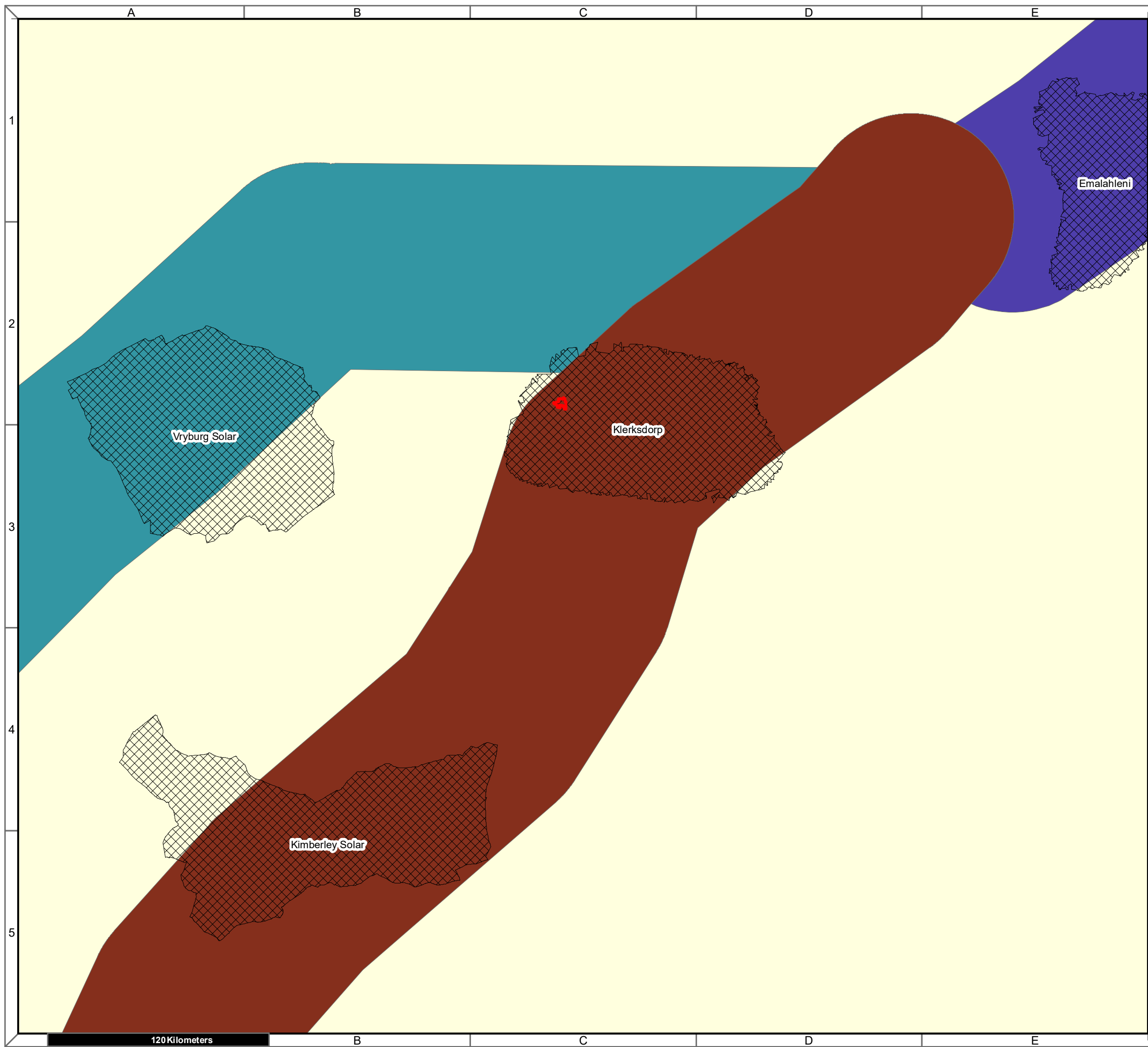
Notes

- Map Scale is 1: 50 000 when printed on A3
- Topographical data courtesy of Surveyor General
- Imagery date 2006



Map Drawn By:	Date	Reference
Melissa Mackay	2021/12/02	CML715

1:50 000 TOPOGRAPHICAL PLANS



**Roan PV Cluster
Hartbeesfontein**

Legend

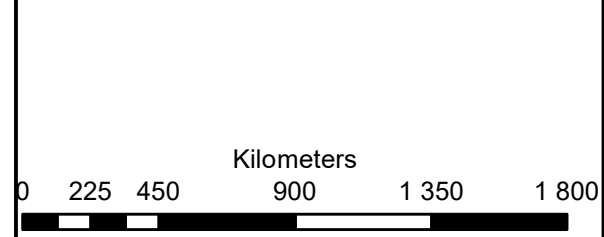
- Roan PV Site

Corridor

- Central corridor
- International corridor
- Northern corridor

Notes

- Map Scale is 1: 2 000 000 when printed on A3
- REDZ data courtesy of DFFE EGIS 2021

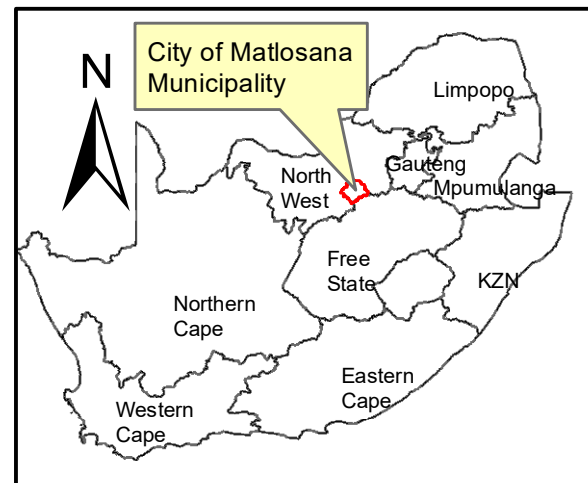
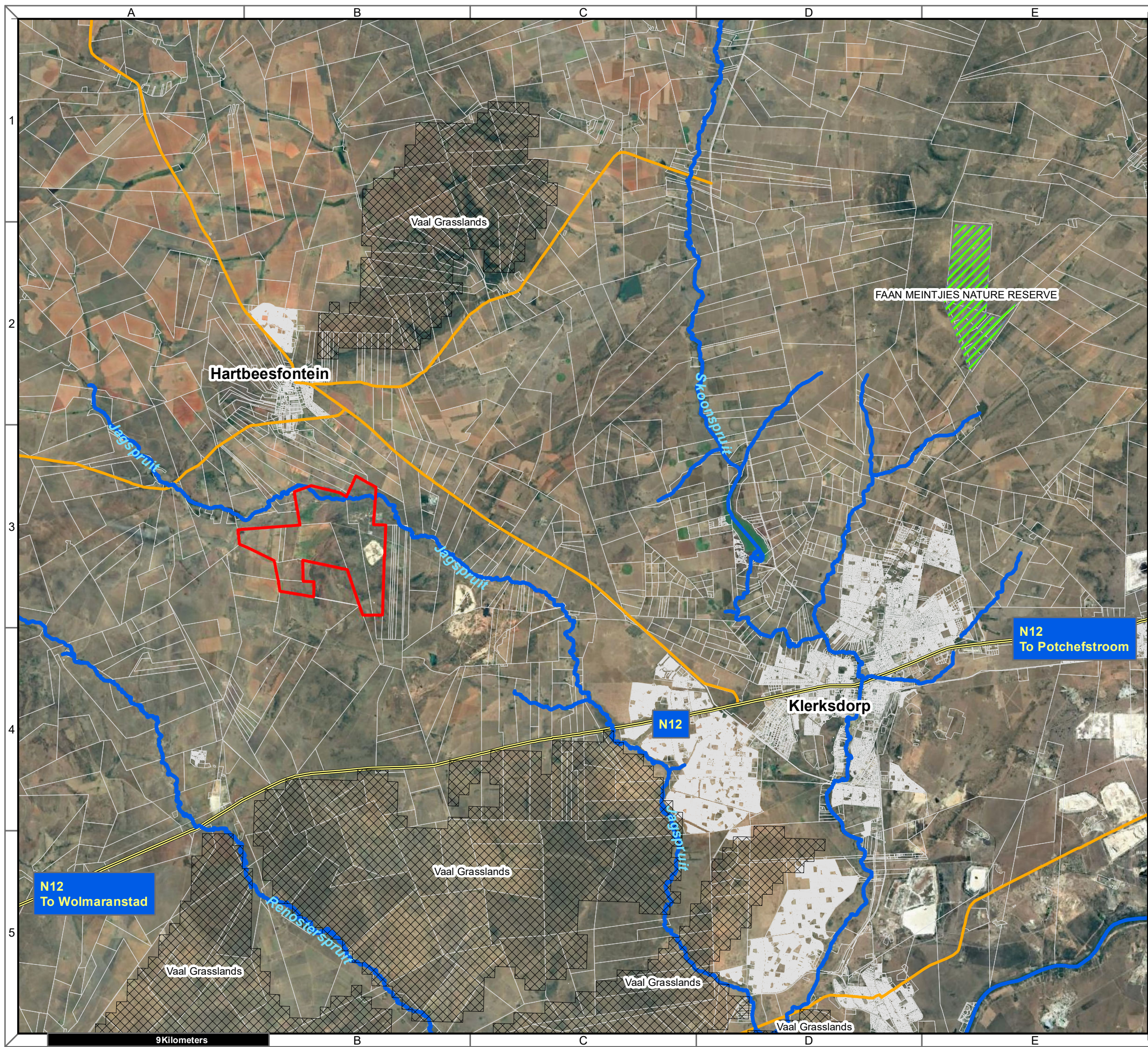


Map Drawn By:	Date	Reference
Melissa Mackay	2021/12/02	CML715

Cape Environmental Assessment Practitioners (Pty) Ltd
 Reg. No. 2008/004627/07


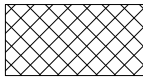

Telephone: +27 44 874 0365
 Facsimile: +27 44 874 0432
 Web: www.cape-eaprac.co.za

17 Progress St
 PO Box 2070
 George 6530



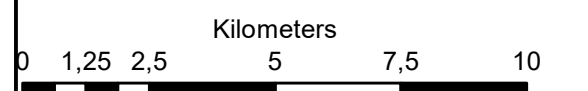
**Roan PV Cluster
Hartbeesfontein**

Legend

-  Roan PV Site
-  Formal_Protected_Areas
-  NPAES Focus Areas
-  Perennial Rivers
-  NATIONAL ROUTE
-  MAIN ROAD

Notes

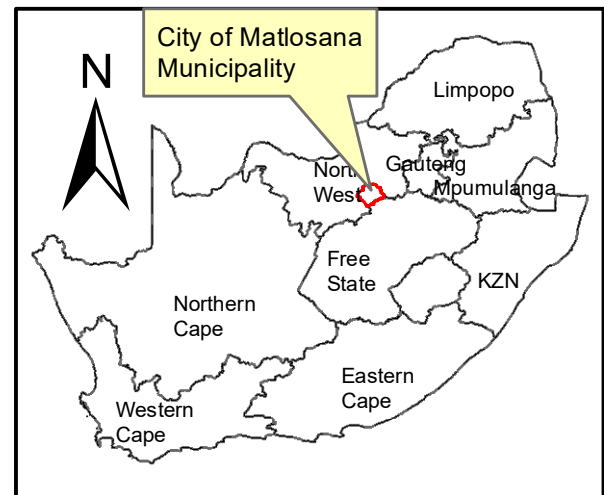
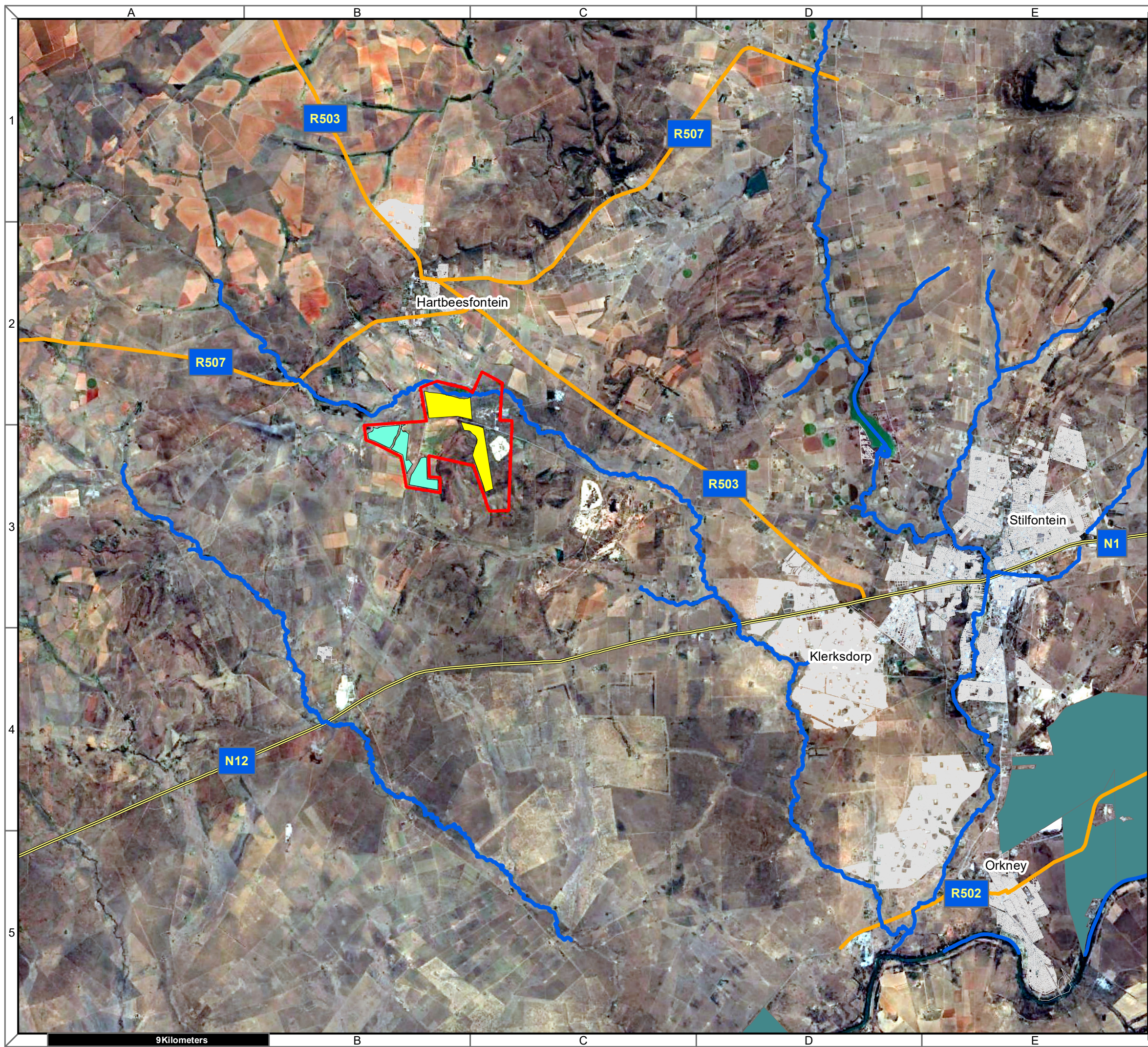
- Map Scale is 1: 150 000 when printed on A3
- Aerial image courtesy of Google Earth Pro 2021
- Imagery date April 2021
- NPAES (2010) data courtesy of SANBI BGIS



Map Drawn By:	Date	Reference
Melissa Mackay	2021/12/13	CML715

Cape Environmental Assessment Practitioners (Pty) Ltd
 Telephone: +27 44 874 0365
 Facsimile: +27 44 874 0432
 Web: www.cape-eaprac.co.za
 17 Progress St
 PO Box 2070
 George 6530

9Kilometers



Roan PV Cluster Hartbeesfontein

Legend

- Roan PV 1
- Roan PV 2
- Roan PV Site
- Perennial Rivers
- NATIONAL ROUTE
- MAIN ROAD
- Onshore Wind
- Solar PV

Notes

- Map Scale is 1: 150 000 when printed on A3
- Aerial image courtesy of Google Earth Pro 2021
- Imagery date June 2021
- Application data courtesy of DFFE EGIS

Kilometers

Map Drawn By:	Date	Reference
Melissa Mackay	2022/01/19	CML715

Cape Environmental Assessment Practitioners (Pty) Ltd
 Reg. No. 2008/004627/07
 Telephone: +27 44 874 0365
 Facsimile: +27 44 874 0432
 Web: www.cape-eaprac.co.za
 17 Progress St
 PO Box 2070
 George 6530