

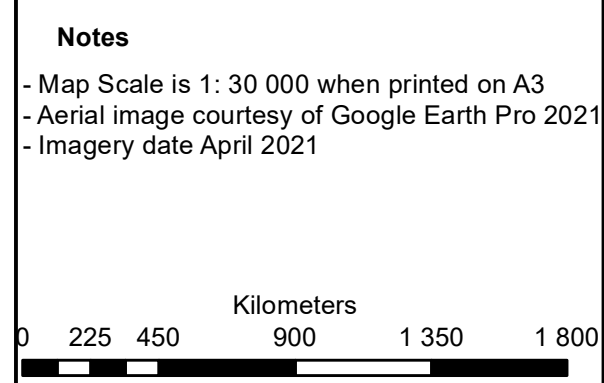
**Roan PV 2**  
**Portions 4, 5, 9 & 16 of Farm 299**  
**Hartbeesfontein**

**Legend**

- Roan PV Site
- Grid Corridor
- Roan PV 2 Access
- Roan PV 2
- Perennial Rivers
- Non-Perennial Rivers
- SECONDARY ROAD
- OTHER ACCESS

**Notes**

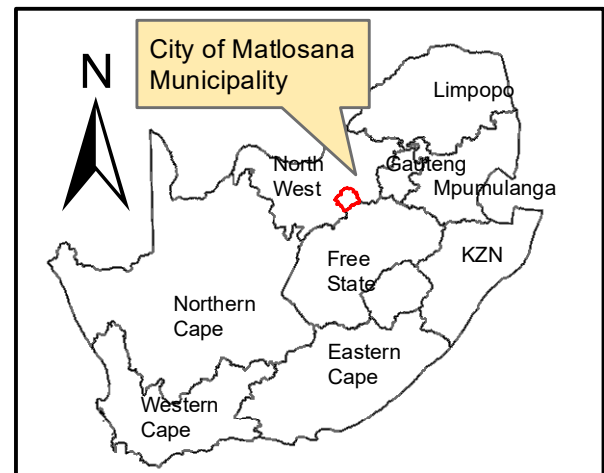
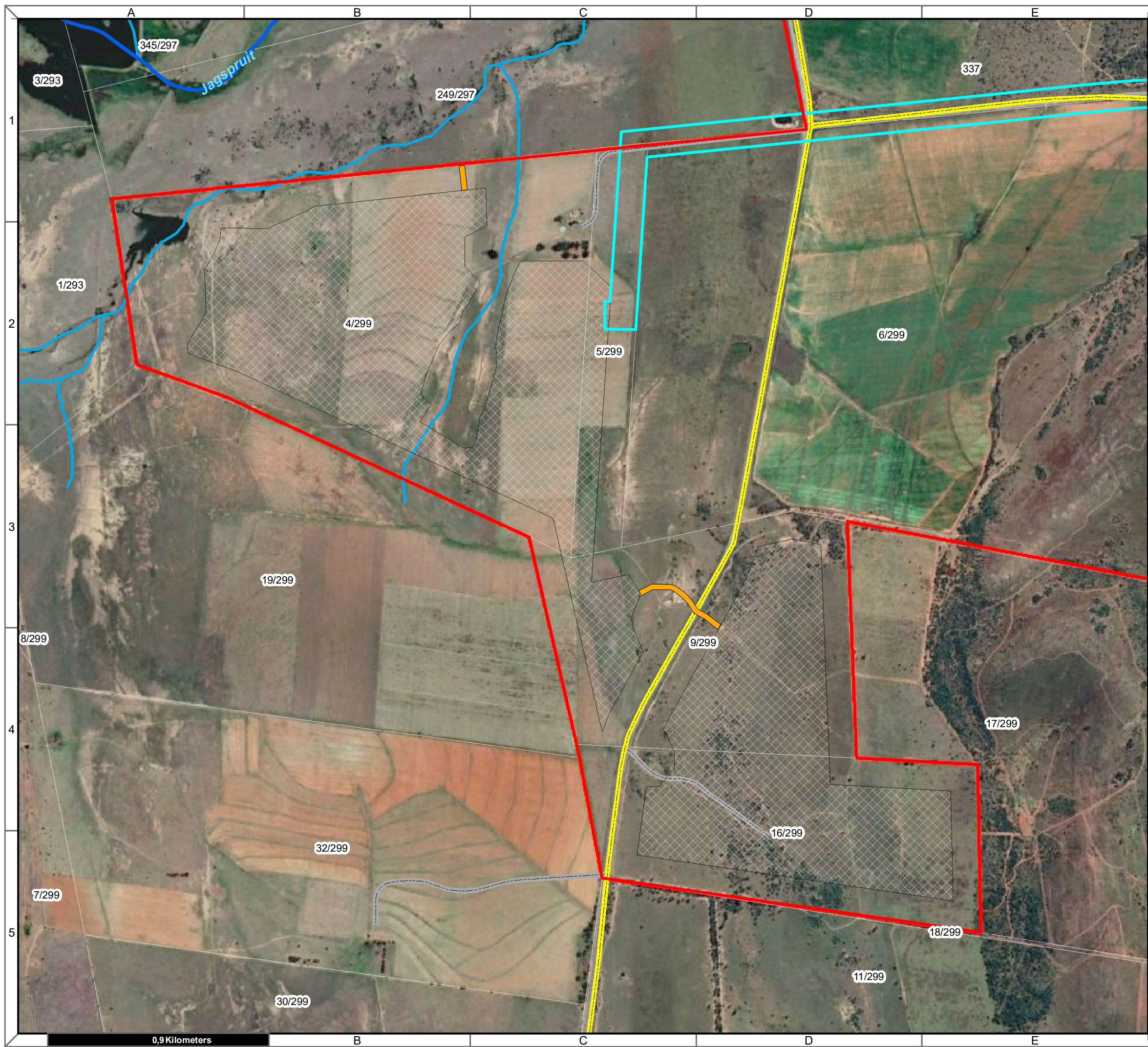
- Map Scale is 1: 30 000 when printed on A3
- Aerial image courtesy of Google Earth Pro 2021
- Imagery date April 2021



Map Drawn By:	Date	Reference
Melissa Mackay	2022/04/14	CML715

**Cape Environmental Assessment Practitioners (Pty) Ltd**  
 Reg. No. 2008/004627/07  
 Telephone: +27 44 874 0365  
 Facsimile: +27 44 874 0432  
 Web: www.cape-eaprac.co.za  
 17 Progress St  
 PO Box 2070  
 George 6530

**AREA LOCATION PLAN**



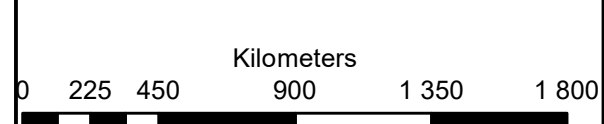
**Roan PV 2**  
**Portions 4, 5, 9 & 16 of Farm 299**  
**Hartbeesfontein**

**Legend**

- Roan PV Site
- Grid Corridor
- Roan PV 2 Access
- Roan PV 2
- Perennial Rivers
- Non-Perennial Rivers
- SECONDARY ROAD
- OTHER ACCESS

**Notes**

- Map Scale is 1: 30 000 when printed on A3
- Aerial image courtesy of Google Earth Pro 2021
- Imagery date April 2021



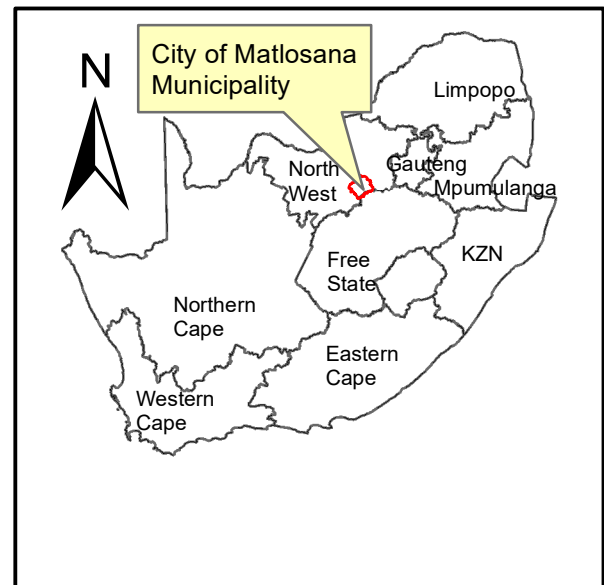
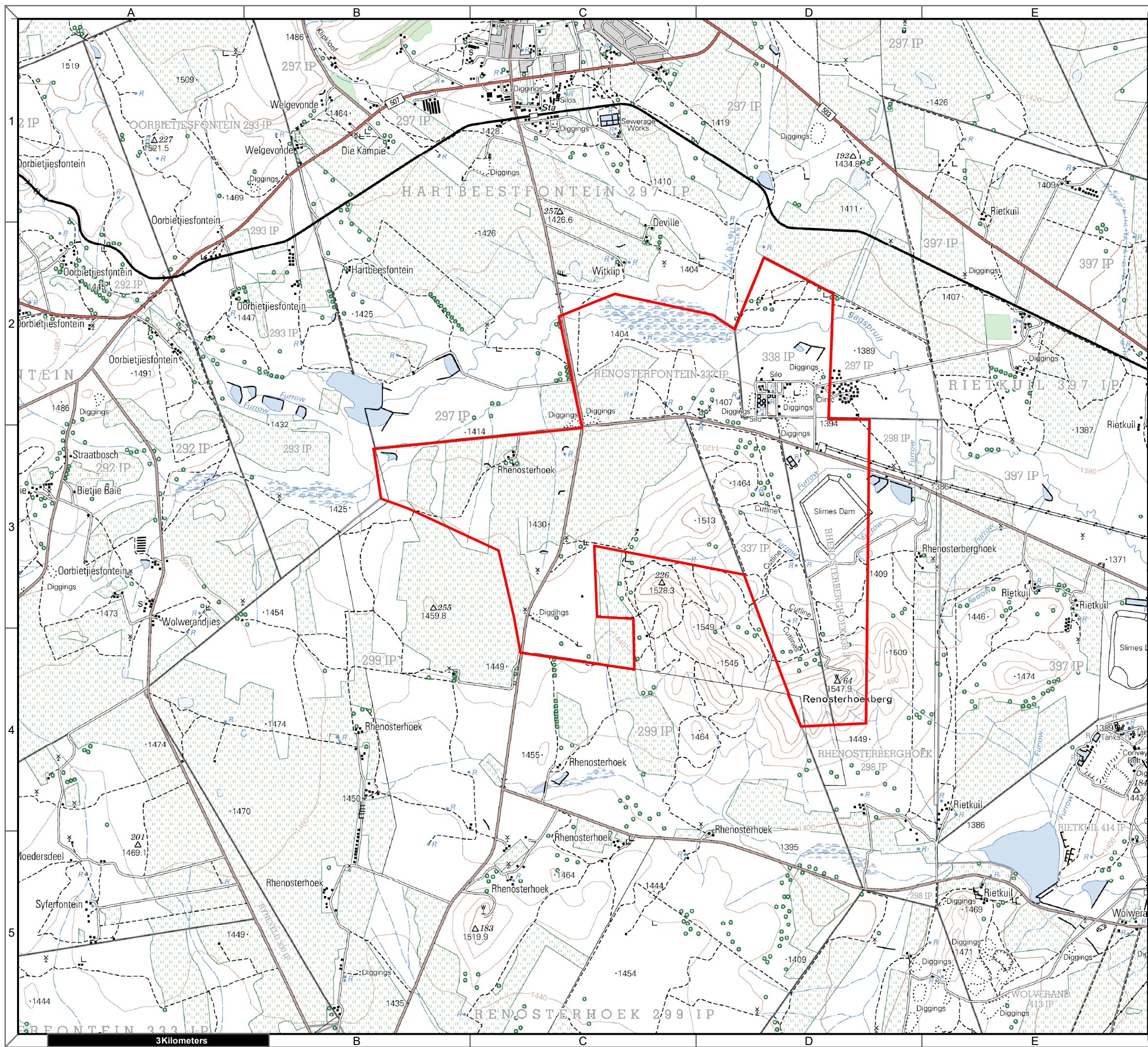
Map Drawn By:	Date	Reference
Melissa Mackay	2022/04/14	CML715

**Cape Environmental Assessment Practitioners (Pty) Ltd**  
 Reg. No. 2008/004627/07

Telephone: +27 44 874 0365  
 Facsimile: +27 44 874 0432  
 Web: www.cape-eaprac.co.za

17 Progress St  
 PO Box 2070  
 George 6530

**SITE LOCATION PLAN**



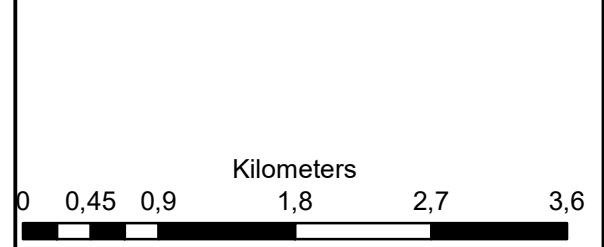
## Roan PV Cluster Hartbeesfontein

### Legend

Roan PV Site

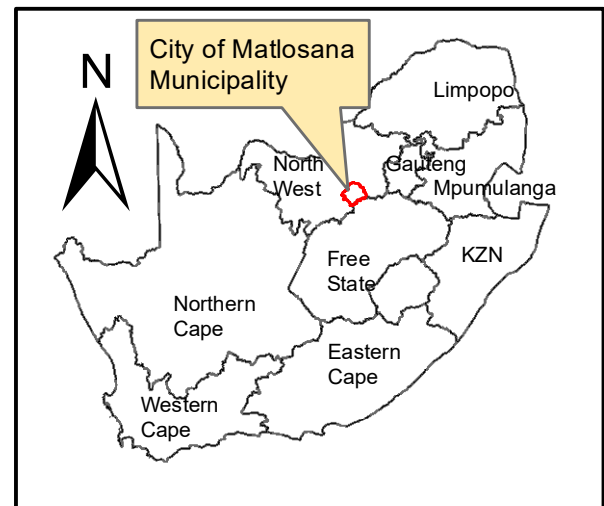
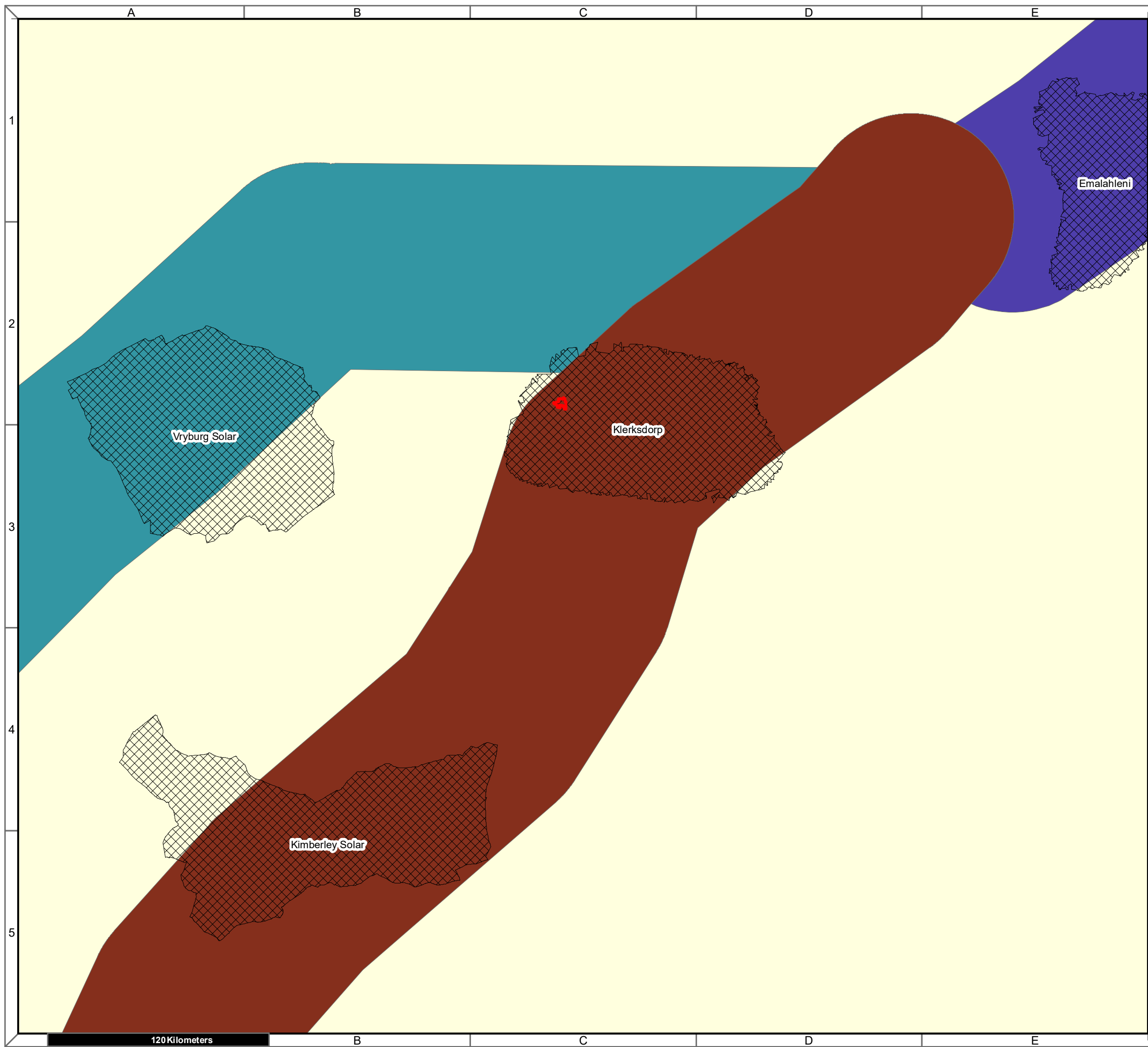
**Notes**

- Map Scale is 1: 50 000 when printed on A3
- Topographical data courtesy of Surveyor General
- Imagery date 2006



Map Drawn By:	Date	Reference
Melissa Mackay	2021/12/02	CML715

1:50 000 TOPOGRAPHICAL PLANS



**Roan PV Cluster  
Hartbeesfontein**

**Legend**

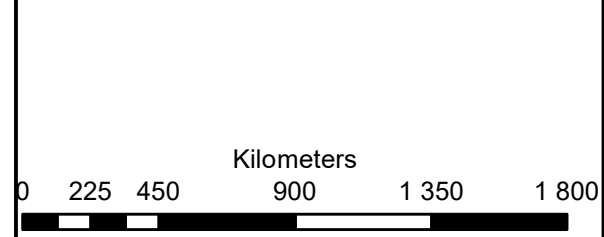
- Roan PV Site

**Corridor**

- Central corridor
- International corridor
- Northern corridor

**Notes**

- Map Scale is 1: 2 000 000 when printed on A3
- REDZ data courtesy of DFFE EGIS 2021

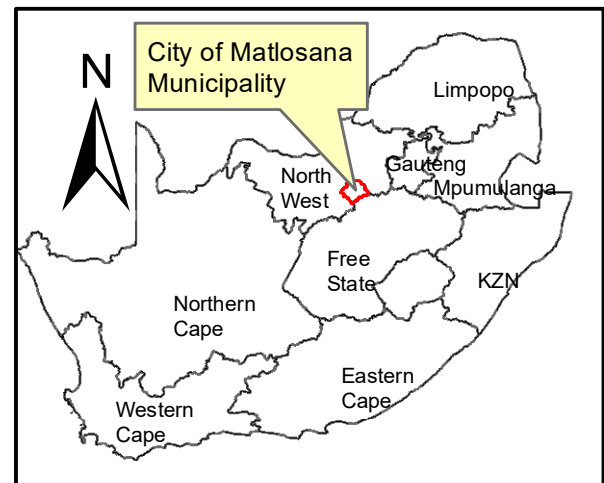
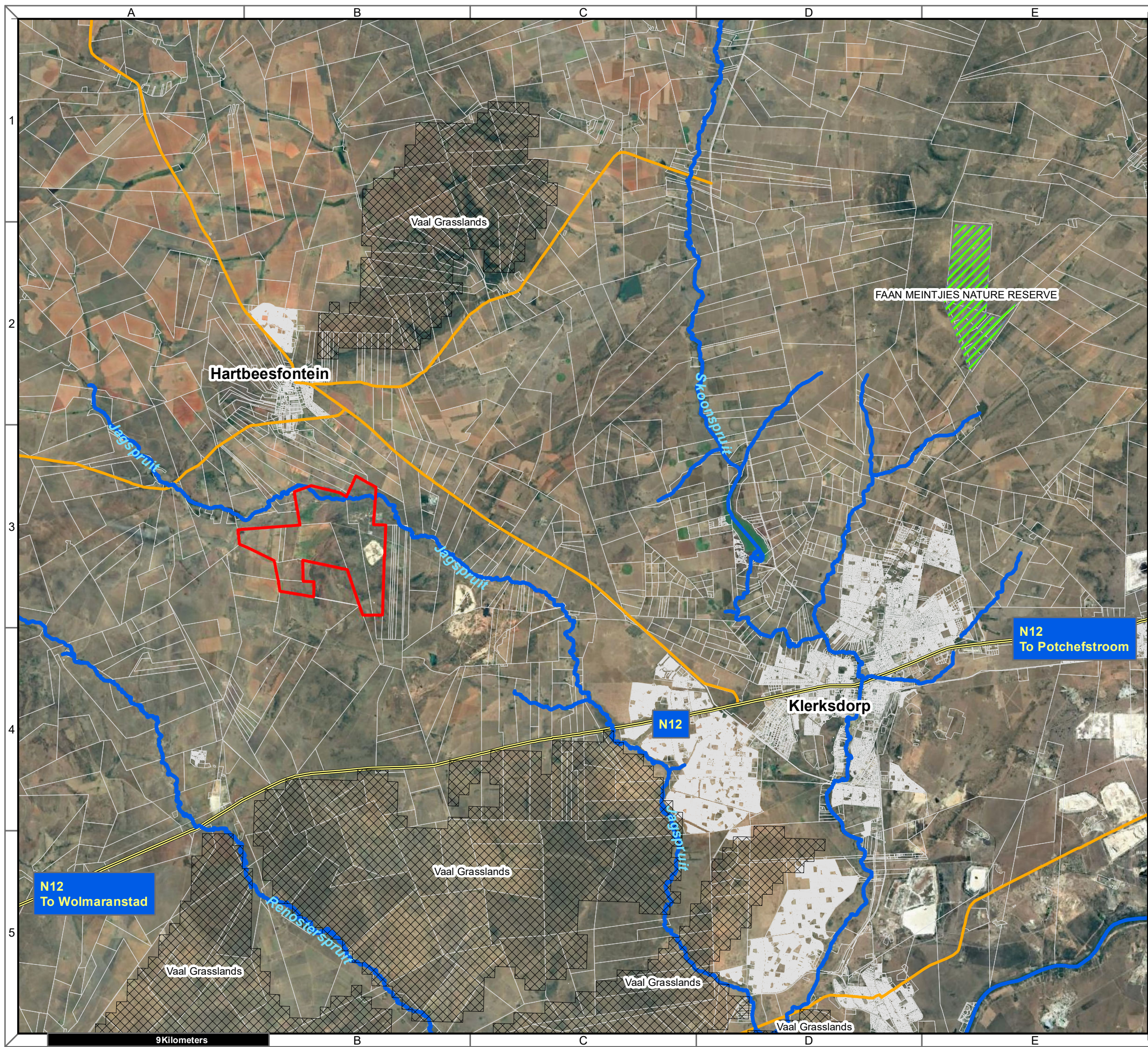


Map Drawn By:	Date	Reference
Melissa Mackay	2021/12/02	CML715

**Cape Environmental Assessment Practitioners (Pty) Ltd**  
 Reg. No. 2008/004627/07

Telephone: +27 44 874 0365  
 Facsimile: +27 44 874 0432  
 Web: www.cape-eaprac.co.za

17 Progress St  
 PO Box 2070  
 George 6530



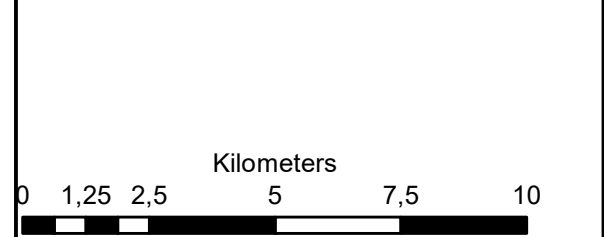
**Roan PV Cluster  
Hartbeesfontein**

**Legend**

- Roan PV Site
- Formal\_Protected\_Areas
- NPAES Focus Areas
- Perennial Rivers
- NATIONAL ROUTE
- MAIN ROAD

**Notes**

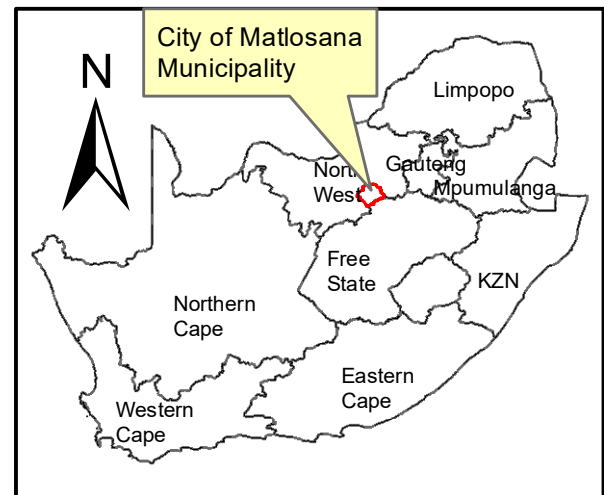
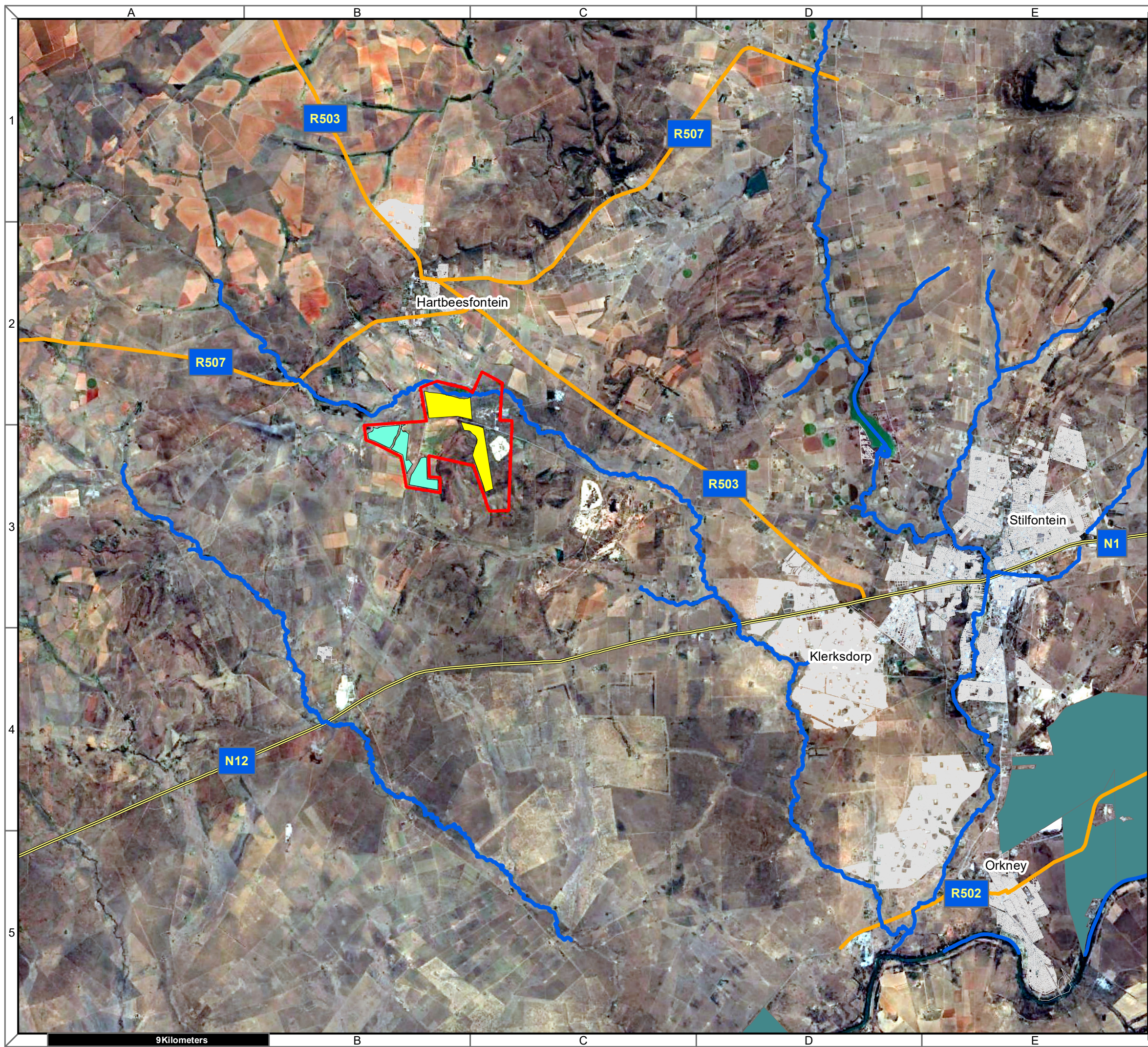
- Map Scale is 1: 150 000 when printed on A3
- Aerial image courtesy of Google Earth Pro 2021
- Imagery date April 2021
- NPAES (2010) data courtesy of SANBI BGIS



Map Drawn By:	Date	Reference
Melissa Mackay	2021/12/13	CML715

**Cape Environmental Assessment Practitioners (Pty) Ltd**  
 Reg. No. 2008/004627/07  
 Telephone: +27 44 874 0365  
 Facsimile: +27 44 874 0432  
 Web: www.cape-eaprac.co.za  
 17 Progress St  
 PO Box 2070  
 George 6530

9Kilometers



**Roan PV Cluster  
Hartbeesfontein**

**Legend**

- Roan PV 1
- Roan PV 2
- Roan PV Site
- Perennial Rivers
- NATIONAL ROUTE
- MAIN ROAD
- Onshore Wind
- Solar PV

**Notes**

- Map Scale is 1: 150 000 when printed on A3
- Aerial image courtesy of Google Earth Pro 2021
- Imagery date June 2021
- Application data courtesy of DFFE EGIS

Kilometers

Map Drawn By:	Date	Reference
Melissa Mackay	2022/01/19	CML715

**Cape Environmental Assessment Practitioners (Pty) Ltd**  
 Reg. No. 2008/004627/07

Telephone: +27 44 874 0365  
 Facsimile: +27 44 874 0432  
 Web: www.cape-eaprac.co.za

17 Progress St  
 PO Box 2070  
 George 6530