

### Elandsfontein PV Portions 7 of Farm 34 Elandsfontein

#### Legend

- Portion\_7\_of\_34
- ARTERIAL ROUTE
- MAIN ROAD
- Perennial Rivers
- Onshore Wind
- Solar PV

**Notes**

- Map Scale is 1: 150 000 when printed on A3
- Aerial image courtesy of Google Earth Pro 2022
- Imagery date May 2021
- Application data courtesy of DFFE EGIS

Kilometers

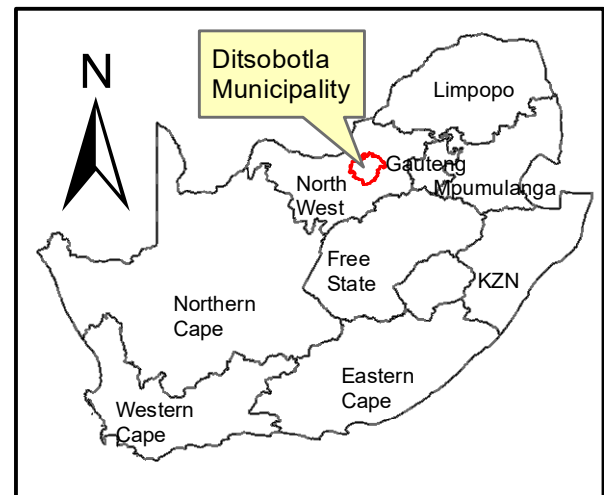
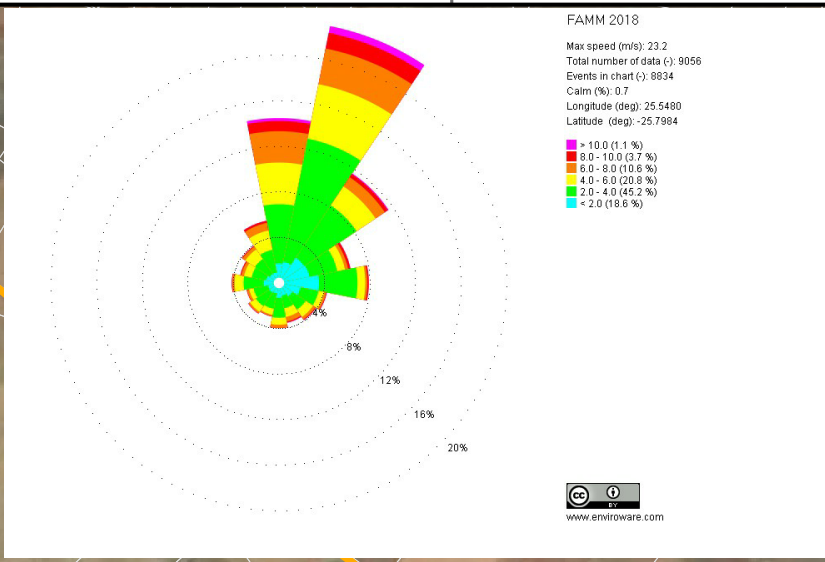
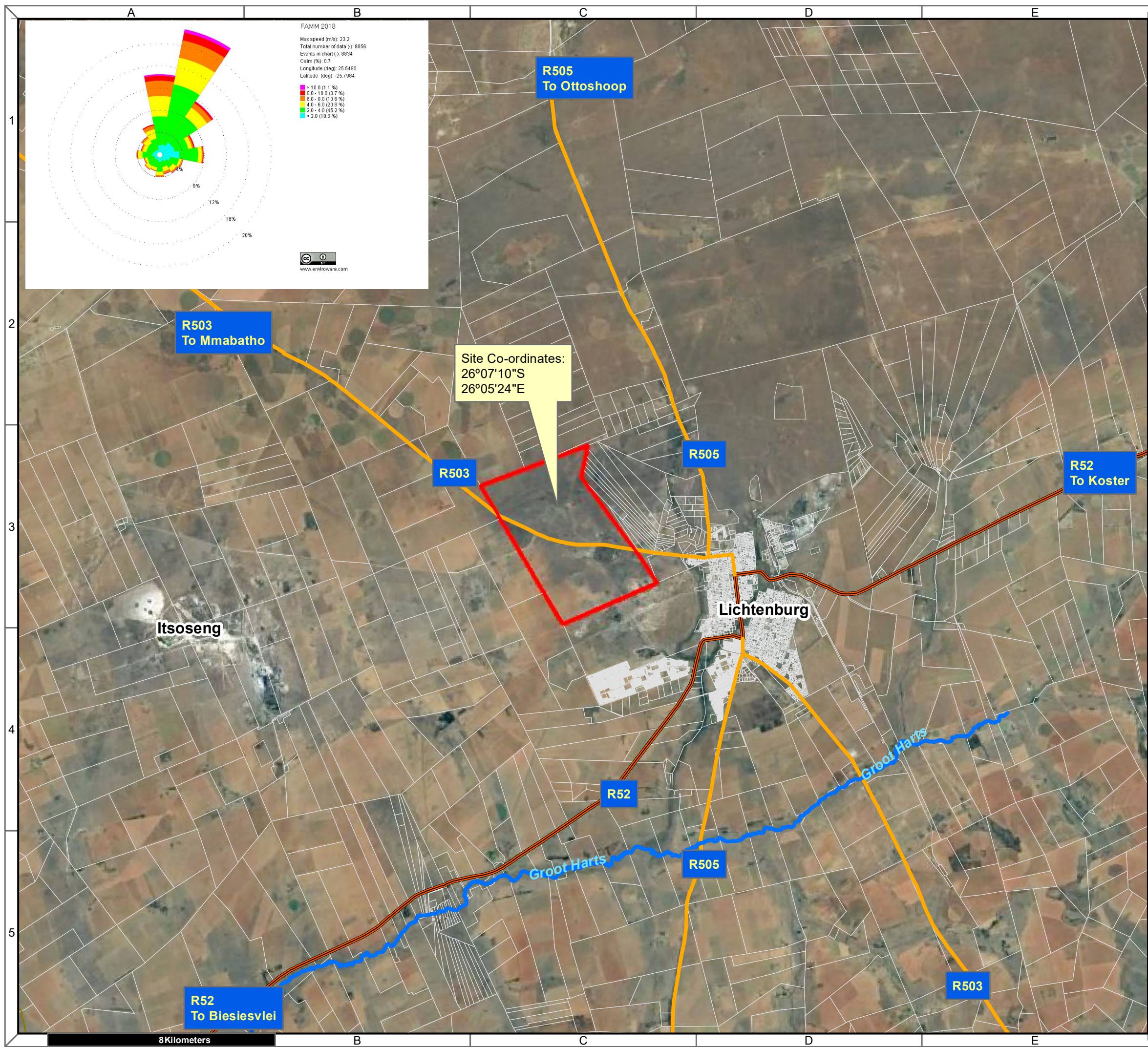
0 1,25 2,5 5 7,5 10

Map Drawn By:	Date	Reference
Melissa Mackay	2022/03/22	DIT725

**Cape Environmental Assessment Practitioners (Pty) Ltd**  
 Reg. No. 2008/004627/07

Telephone: +27 44 874 0365  
 Facsimile: +27 44 874 0432  
 Web: www.cape-eaprac.co.za

17 Progress St  
 PO Box 2070  
 George 6530



**Elandsfontein PV  
Portions 7 of Farm 34  
Elandsfontein**

**Legend**

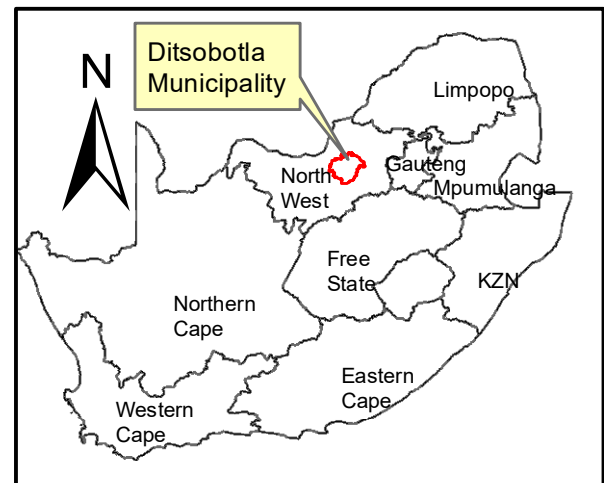
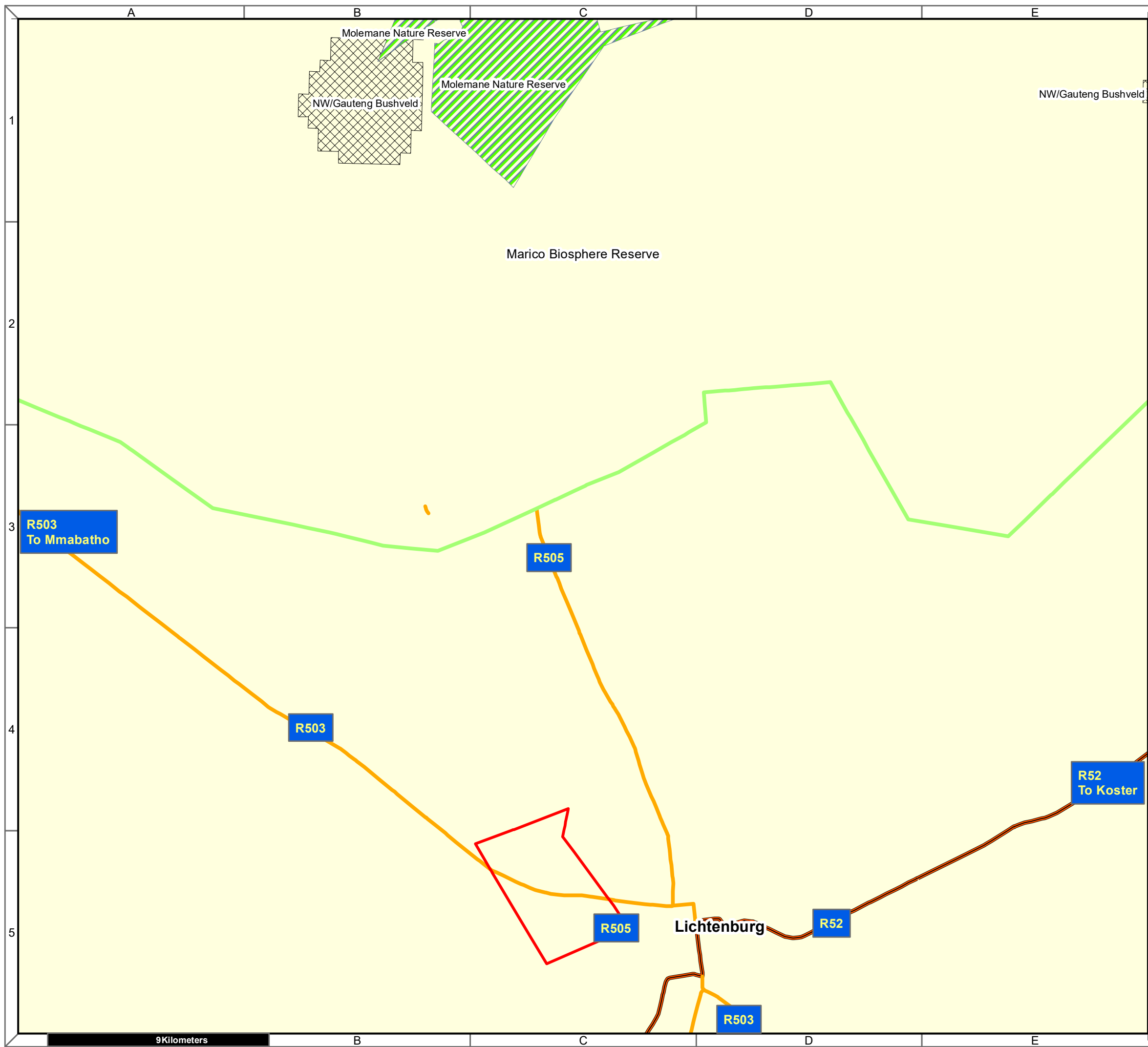
- Portion\_7\_of\_34
- Perennial Rivers
- ARTERIAL ROUTE
- NATIONAL ROUTE
- MAIN ROAD

**Notes**

- Map Scale is 1: 130 000 when printed on A3
- Aerial image courtesy of Google Earth Pro 2022
- Imagery date September 2021
- Wind data courtesy of Metar 2018
- Nearest Metar station is Mmabatho Airport (FAMM) approx. 65kms on heading 302.99 degrees

Kilometers  
0 1 2 4 6 8

Map Drawn By:	Date	Reference
Melissa Mackay	2022/03/22	DIT725



**Elandsfontein PV  
Portions 7 of Farm 34  
Elandsfontein**

**Legend**

- Portion\_7\_of\_34
- Formal\_Protected\_Areas
- NPAES Focus Areas
- SACAD\_OR\_2021\_Q1
- Perennial Rivers
- ARTERIAL ROUTE
- MAIN ROAD

**Notes**

- Map Scale is 1: 150 000 when printed on A3
- Aerial image courtesy of Google Earth Pro 2022
- Imagery date May 2021
- NPAES (2010) data courtesy of SANBI BGIS

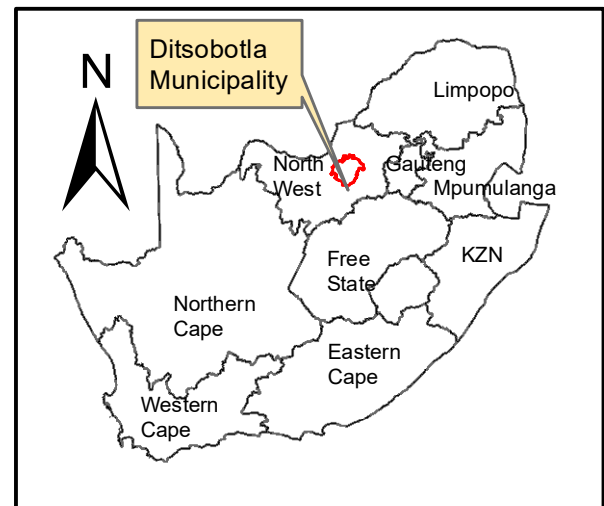
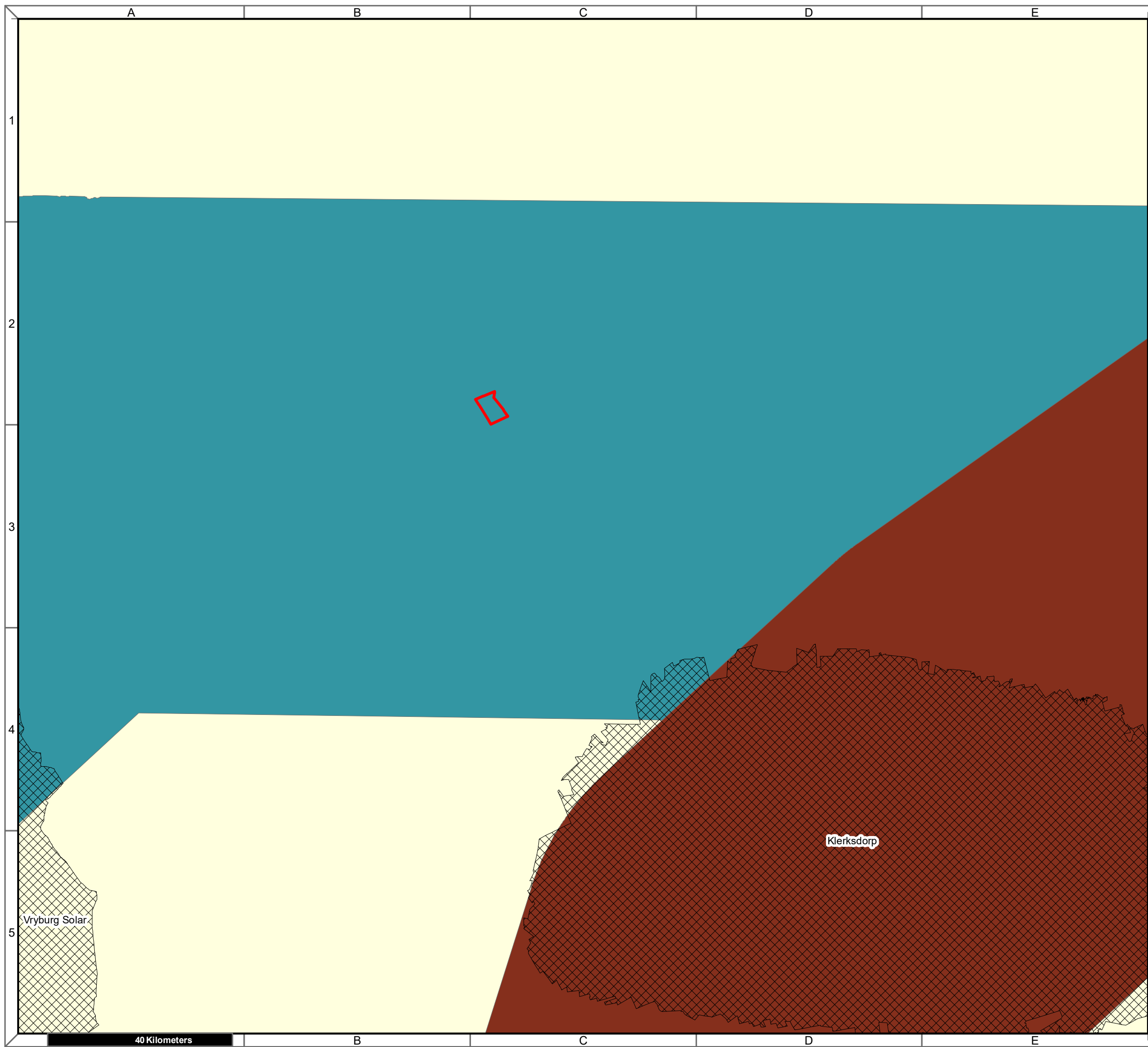
Kilometers

Map Drawn By:	Date	Reference
Melissa Mackay	2022/03/22	DIT725

**Cape Environmental Assessment Practitioners (Pty) Ltd**  
 Reg. No. 2008/004627/07


Telephone: +27 44 874 0365  
 Facsimile: +27 44 874 0432  
 Web: www.cape-eaprac.co.za

17 Progress St  
 PO Box 2070  
 George 6530





**Elandsfontein PV  
Portions 7 of Farm 34  
Elandsfontein**

**Legend**

 Portion\_7\_of\_34

**Corridor**

 Central corridor

 Northern corridor

**Notes**

- Map Scale is 1: 8 00 000 when printed on A3
- REDZ data courtesy of DFFE EGIS 2021

Kilometers

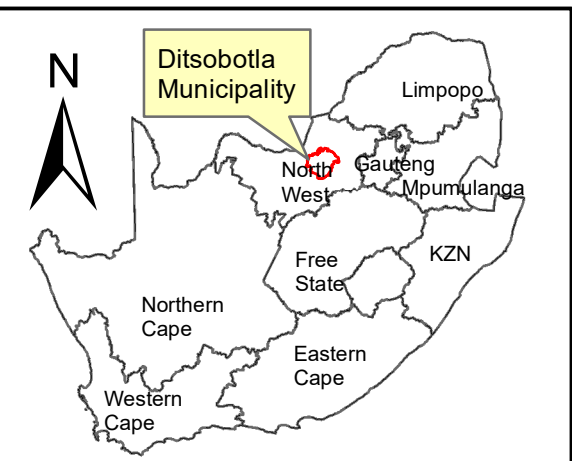
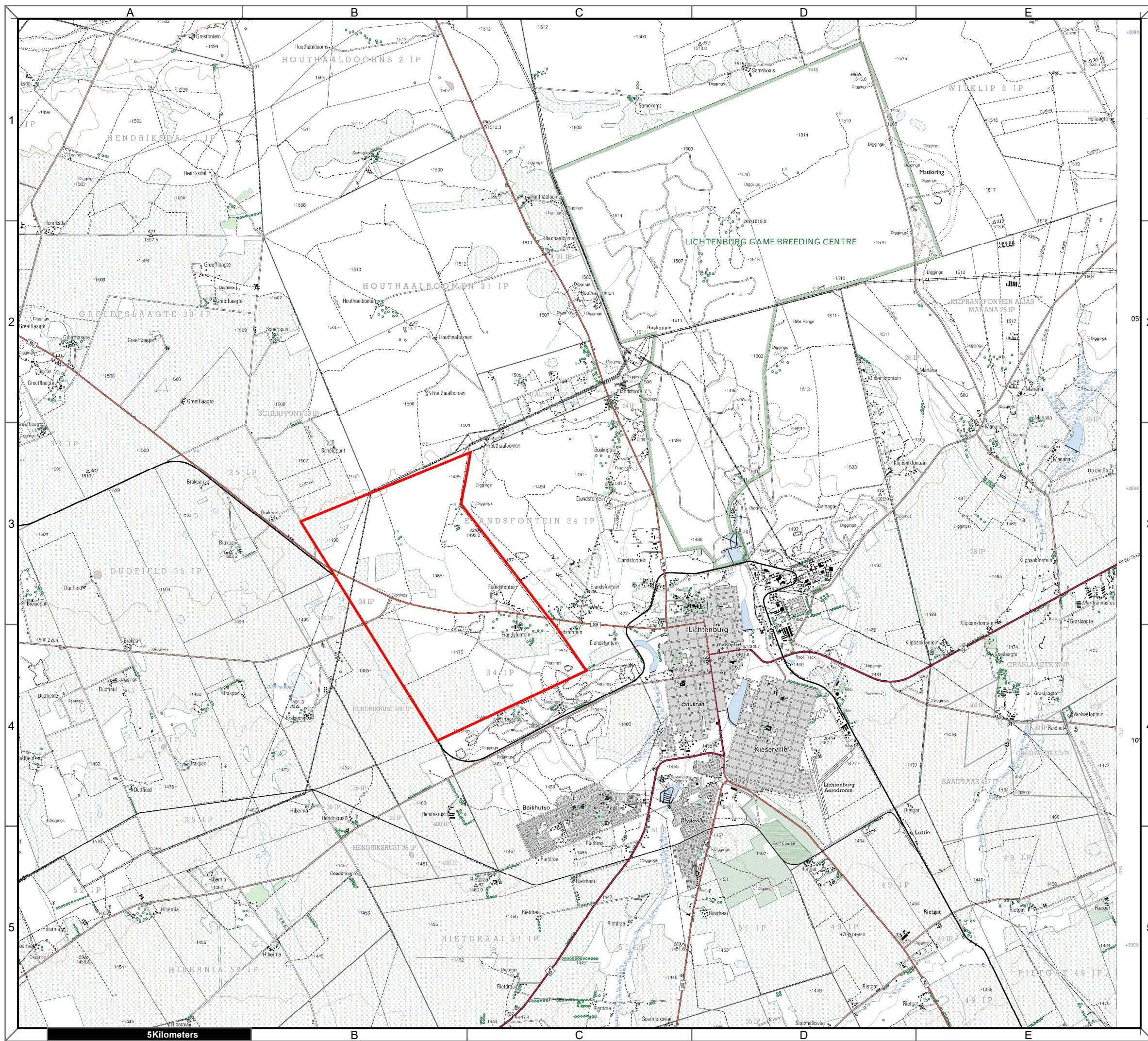
0 225 450 900 1 350 1 800

Map Drawn By:	Date	Reference
Melissa Mackay	2022/03/22	DIT725

 **Cape Environmental Assessment Practitioners (Pty) Ltd**  
Reg. No. 2008/004627/07

Telephone: +27 44 874 0365  
 Facsimile: +27 44 874 0432  
 Web: www.cape-eaprac.co.za

17 Progress St  
 PO Box 2070  
 George 6530



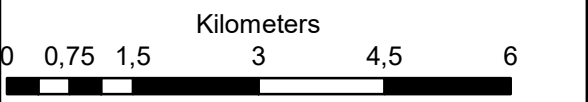
**Elandsfontein PV  
Portions 7 of Farm 34  
Elandsfontein**

**Legend**

Portion\_7\_of\_34

**Notes**

- Map Scale is 1: 90 000 when printed on A3
- Topographical data courtesy of Surveyor General
- Imagery date 2006

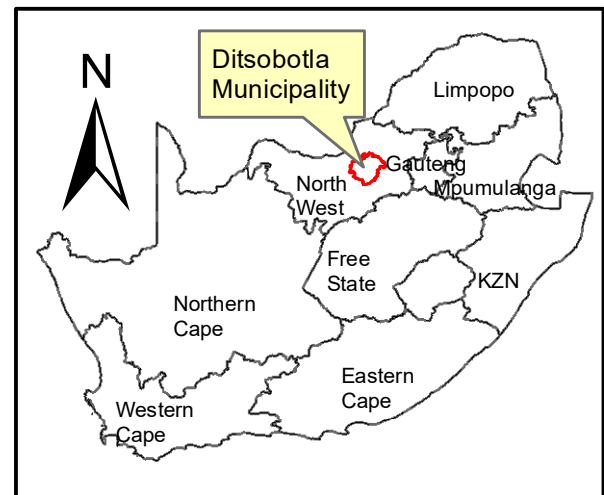
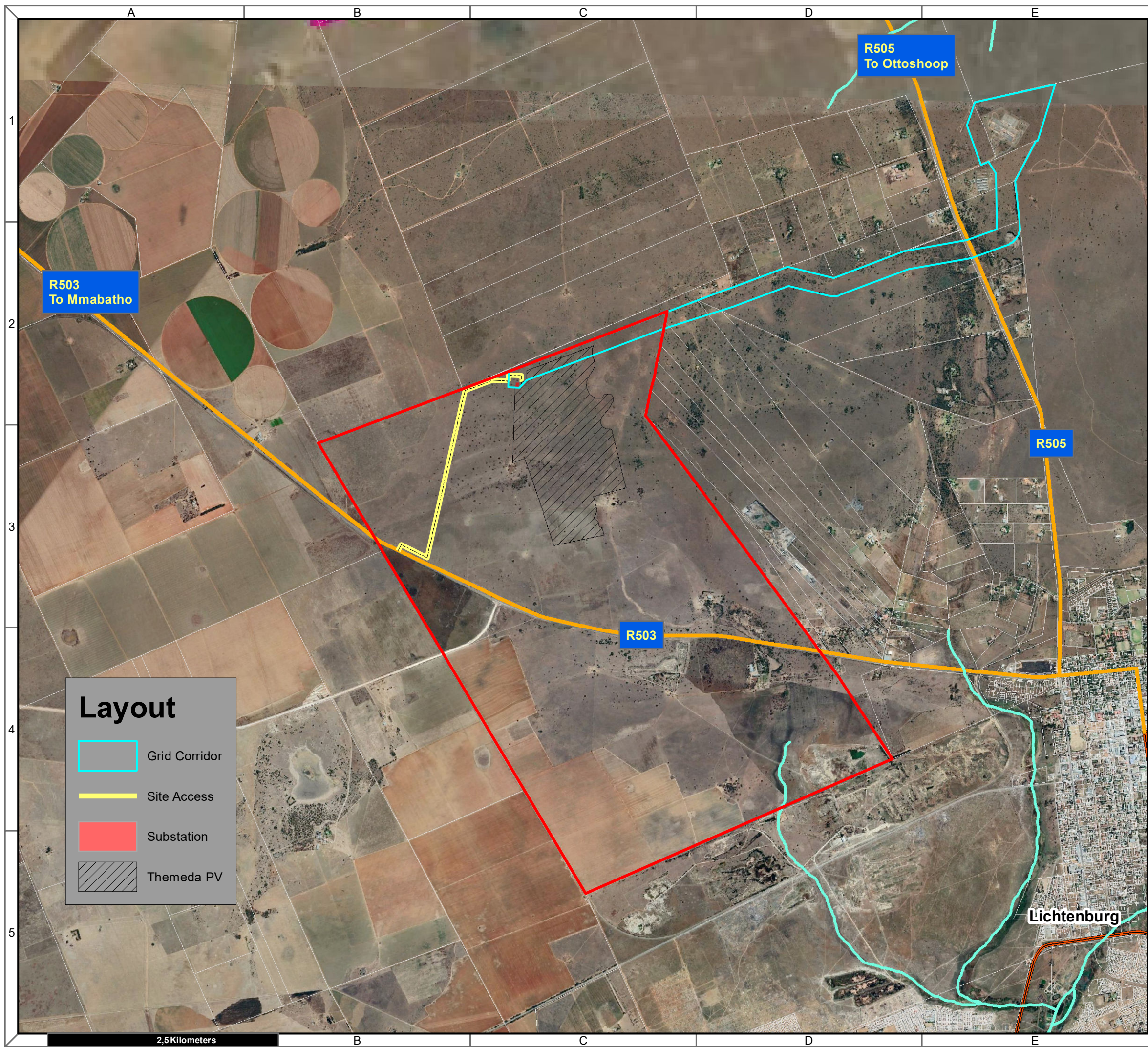


Map Drawn By:	Date	Reference
Melissa Mackay	2022/03/22	DIT725

**Cape Environmental Assessment Practitioners (Pty) Ltd**  
 Telephone: +27 44 874 0365  
 Facsimile: +27 44 874 0432  
 Web: www.cape-eaprac.co.za

17 Progress St  
 PO Box 2070  
 George 6530

**1:50 000 TOPOGRAPHICAL PLANS**



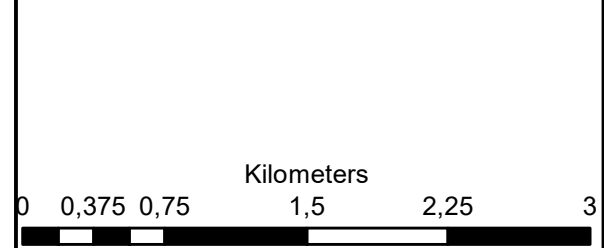
**Aristida PV  
Portions 7 of Farm 34  
Elandsfontein**

**Legend**

- Portion\_7\_of\_34
- Perennial Rivers
- Non-Perennial Rivers
- ARTERIAL ROUTE
- MAIN ROAD

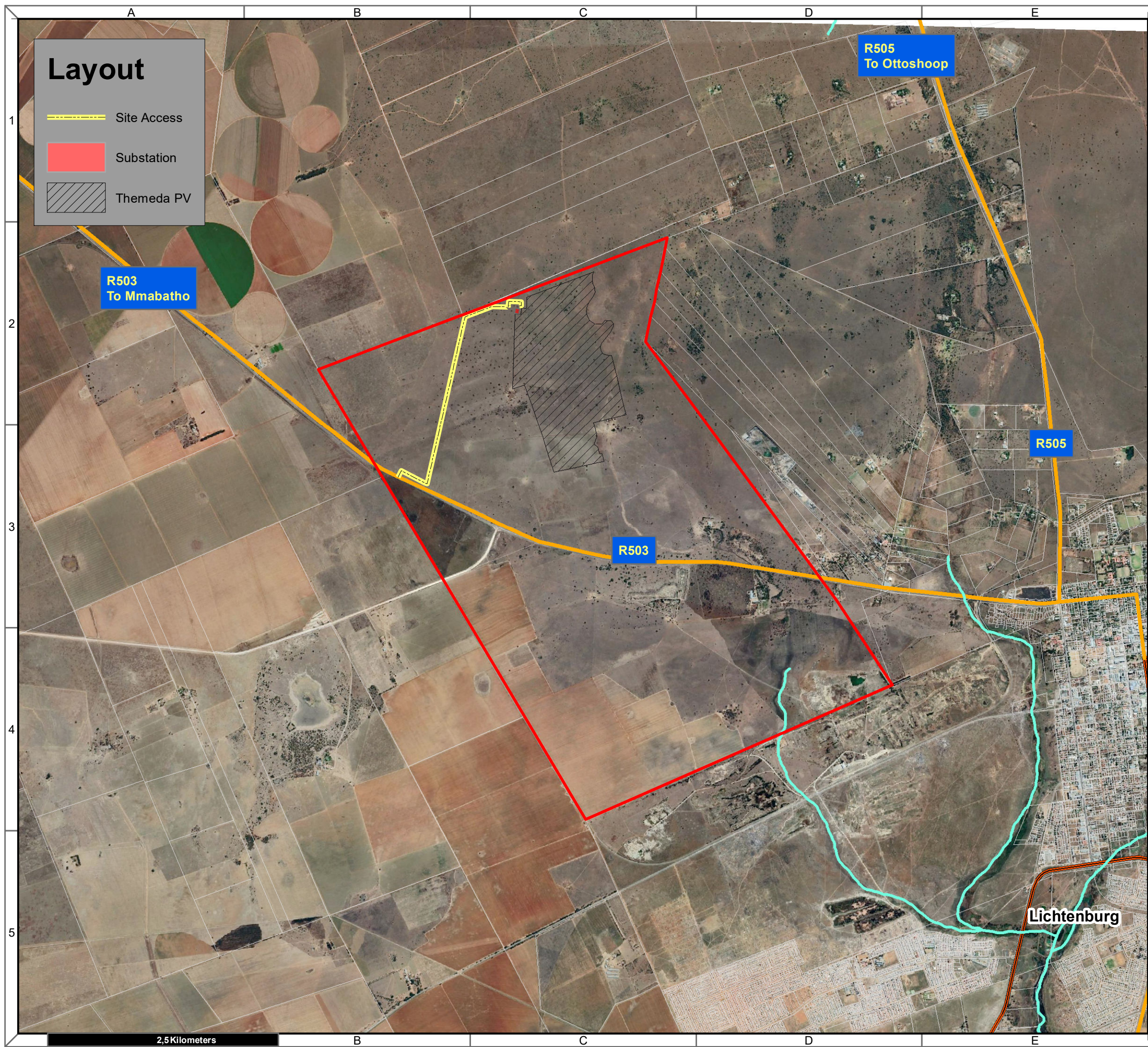
**Notes**

- Map Scale is 1: 40 000 when printed on A3
- Aerial image courtesy of Google Earth Pro 2022
- Imagery date September 2021



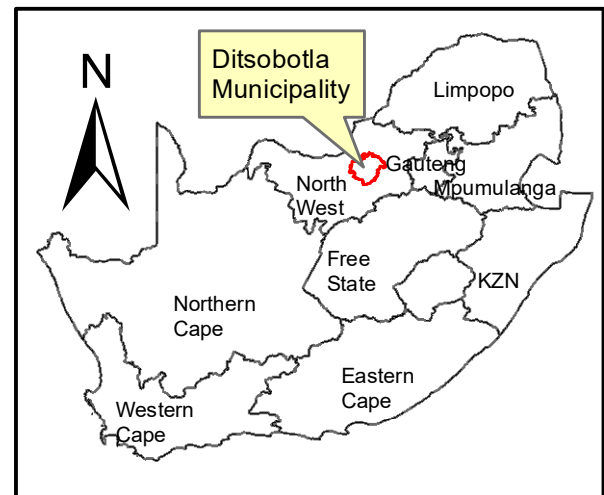
Map Drawn By:	Date	Reference
Melissa Mackay	2022/08/13	DIT725

**Cape Environmental Assessment Practitioners (Pty) Ltd**  
 Telephone: +27 44 874 0365  
 Facsimile: +27 44 874 0432  
 Web: www.cape-eaprac.co.za  
 17 Progress St  
 PO Box 2070  
 George 6530



### Layout

- Site Access
- Substation
- Themeda PV



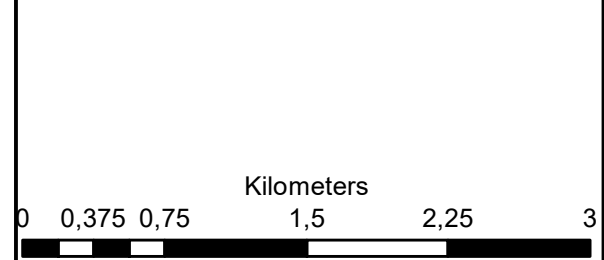
## Aristida PV Portions 7 of Farm 34 Elandsfontein

### Legend

- Portion\_7\_of\_34
- Perennial Rivers
- Non-Perennial Rivers
- ARTERIAL ROUTE
- MAIN ROAD

**Notes**

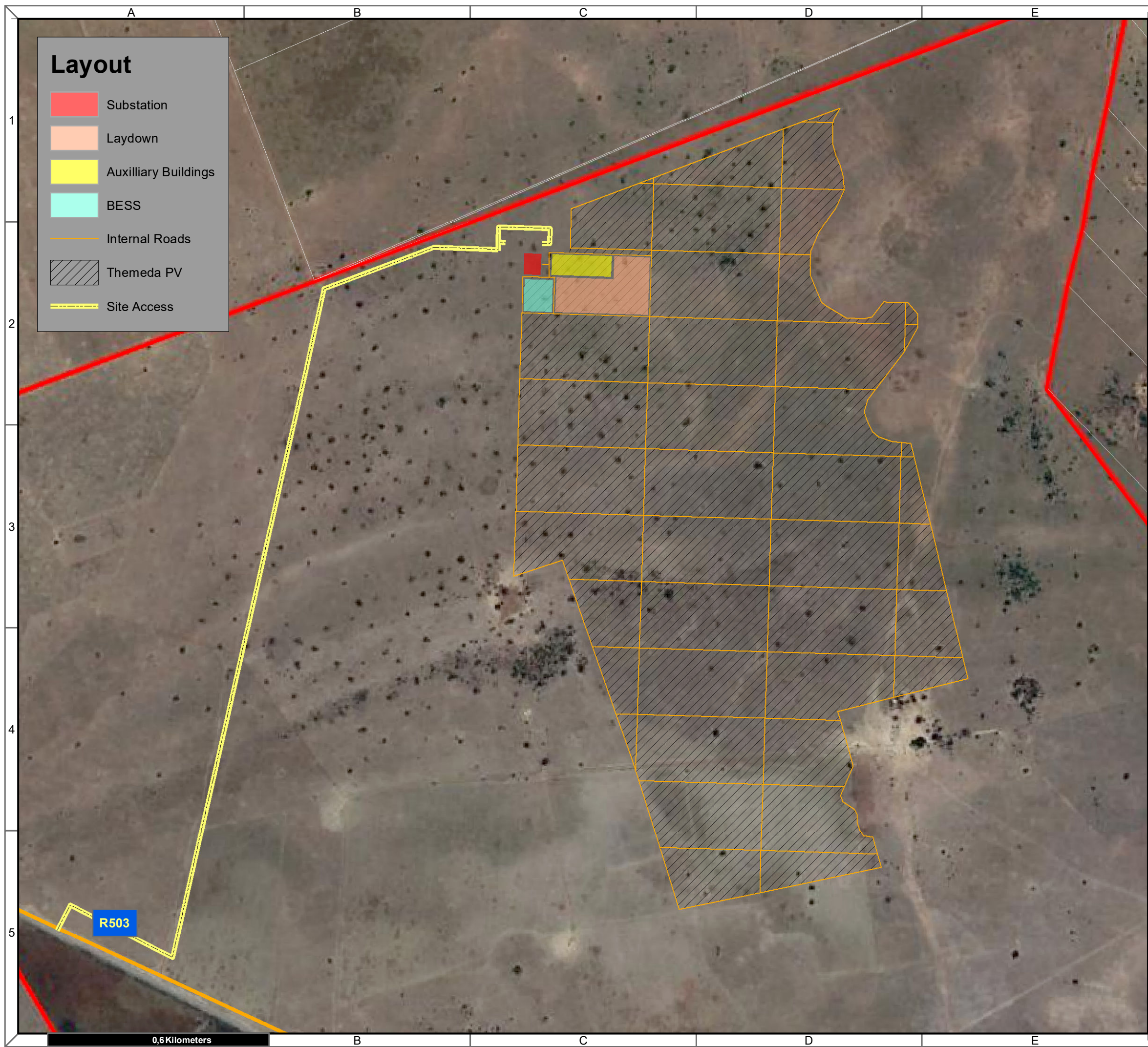
- Map Scale is 1: 40 000 when printed on A3
- Aerial image courtesy of Google Earth Pro 2022
- Imagery date September 2021



Map Drawn By:	Date	Reference
Melissa Mackay	2022/08/13	DIT725

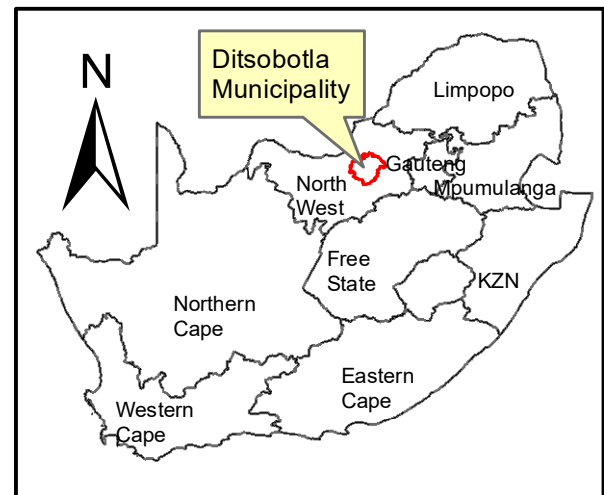
Cape Environmental Assessment Practitioners (Pty) Ltd  
 Reg. No. 2008/004627/07  
 Telephone: +27 44 874 0365  
 Facsimile: +27 44 874 0432  
 Web: www.cape-eaprac.co.za

17 Progress St  
 PO Box 2070  
 George 6530



### Layout

- Substation
- Laydown
- Auxilliary Buildings
- BESS
- Internal Roads
- Themeda PV
- Site Access



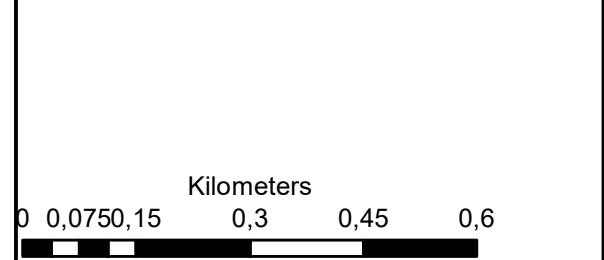
## Themeda PV Portions 7 of Farm 34 Elandsfontein

### Legend

- Portion\_7\_of\_34
- Perennial Rivers
- Non-Perennial Rivers
- MAIN ROAD
- OTHER ACCESS

**Notes**

- Map Scale is 1: 10 000 when printed on A3
- Aerial image courtesy of Google Earth Pro 2022
- Imagery date September 2021



**Cape Environmental Assessment Practitioners (Pty) Ltd**  
 Reg. No. 2008/004627/07

Telephone: +27 44 874 0365  
 Facsimile: +27 44 874 0432  
 Web: www.cape-eaprac.co.za

17 Progress St  
 PO Box 2070  
 George 6530