

Hotazel Solar 2 Remaining Extent of Farm York A 279

Legend

- H2_Grid_Corridor
- Remaining Extent of 279
- Remaining Extent of 280
- Portion 3 of 279
- Portion 11 of 279
- H2_Site boundary
- MAIN ROAD
- Railway Lines

Notes

- Map Scale is 1: 80 000 when printed on A3
- Aerial image courtesy of Google Earth Pro 2020
- Imagery date May 2015
- Wind data courtesy of Metar 2017
- Nearest Metar station is Upington (FAUP) approx. 210kms south west

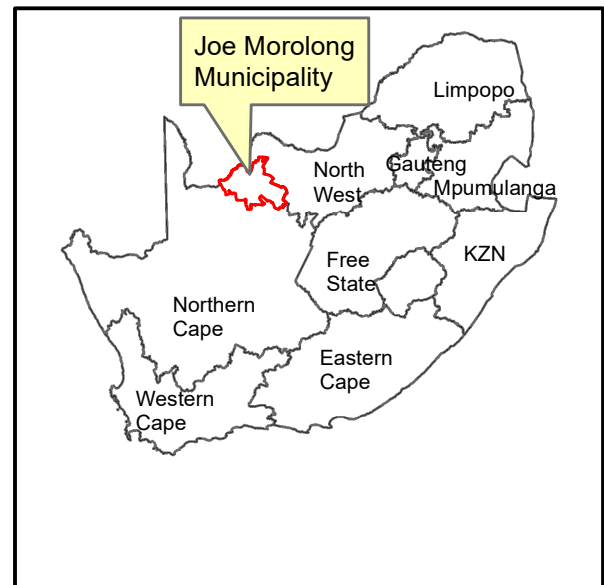
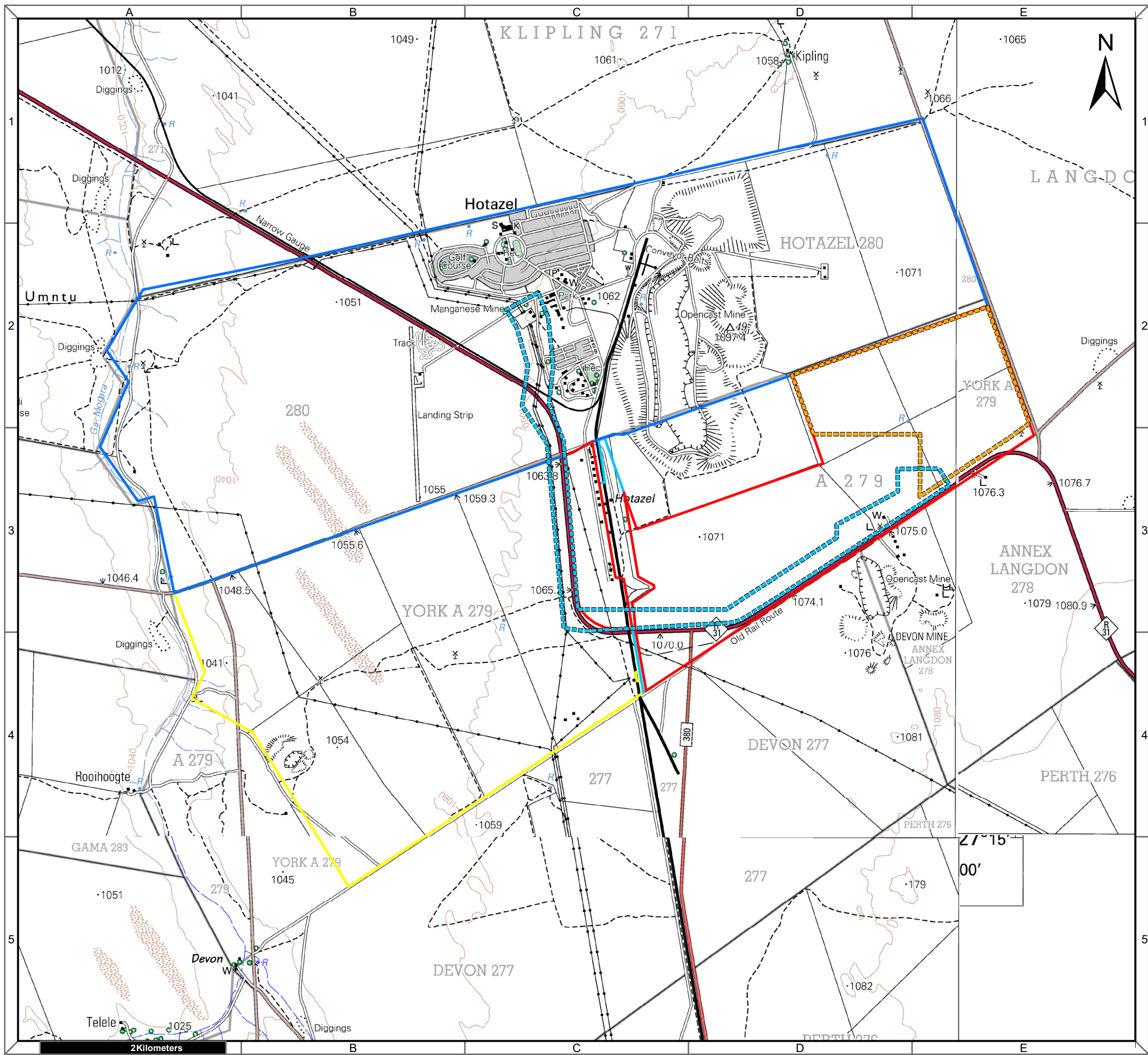
Kilometers

Map Drawn By:	Date	Reference
Melissa Mackay	2020/06/24	JMO637

Cape Environmental Assessment Practitioners (Pty) Ltd
 Reg. No. 2008/004627/07







Telephone: +27 44 874 0365
 Facsimile: +27 44 874 0432
 Web: www.cape-eaprac.co.za

17 Progress St
 PO Box 2070
 George 6530



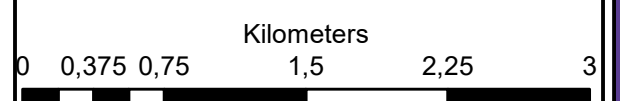
Hotazel Solar 2 Remaining Extent of Farm York A 279

Legend

-  H2_Grid_Corridor
-  H2_Site boundary
-  Remaining Extent of 279
-  Remaining Extent of 280
-  Portion 3 of 279
-  Portion 11 of 279

Notes

- Map Scale is 1: 40 000 when printed on A3
- Topographical data courtesy of Surveyor General
- Imagery date 2010 and 2013



Map Drawn By:	Date	Reference
Melissa Mackay	2020/06/24	JMO637

 Cape Environmental Assessment Practitioners (Pty) Ltd
Reg. No. 2008/004627/07
Telephone: +27 44 874 0365
Facsimile: +27 44 874 0432
Web: www.cape-eaprac.co.za
17 Progress St
PO Box 2070
George 6530

1:50 000 TOPOGRAPHICAL PLANS