

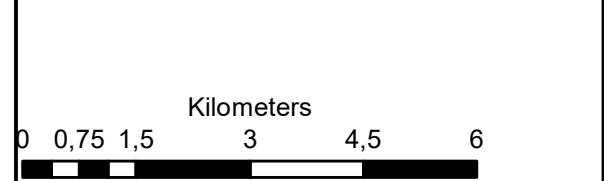
Postmasburg Solar PV Energy Facility2 Remaining Extent of Farm 436

Legend

- Remaining_Extent_Farm_436
- Approved Footprint
- BESS
- Perennial River
- NATIONAL ROUTE
- MAIN ROAD

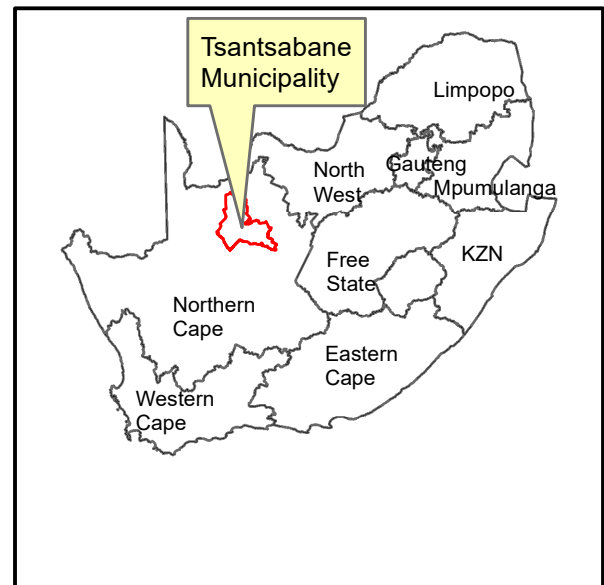
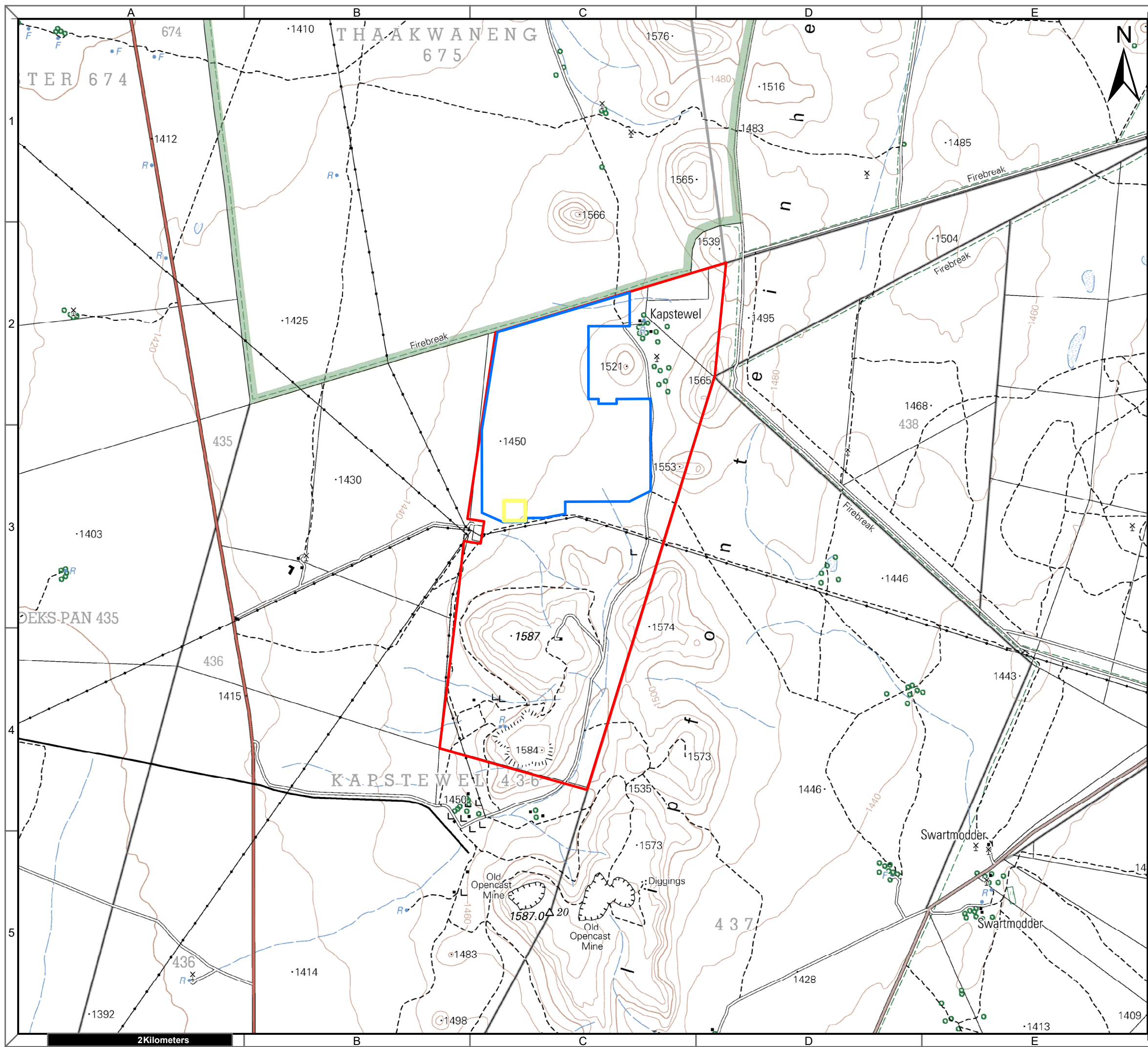
Notes

- Map Scale is 1: 100 000 when printed on A3
- Aerial image courtesy of Google Earth Pro 2020
- Imagery date March 2019
- Wind data courtesy of Metar 2017
- Nearest Metar station is Kimberley Airport (FAKM) approx. 176kms west



Map Drawn By:	Date	Reference
Melissa Mackay	2020/09/22	TSA309

Cape Environmental Assessment Practitioners (Pty) Ltd
 Reg. No. 2008/004627/07
 Telephone: +27 44 874 0365
 Facsimile: +27 44 874 0432
 Web: www.cape-eaprac.co.za
 17 Progress St
 PO Box 2070
 George 6530



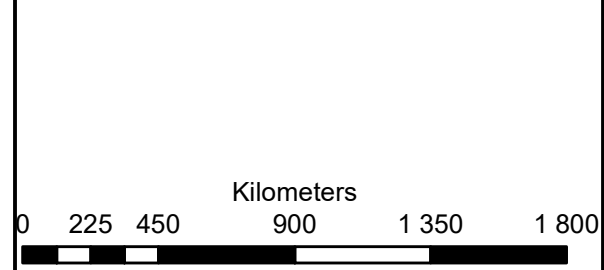
Postmasburg Solar PV Energy Facility2 Remaining Extent of Farm 436

Legend

- Remaining_Extent_Farm_436
- BESS
- Approved Footprint

Notes

- Map Scale is 1: 40 000 when printed on A3
- Topographical data courtesy of Surveyor General
- Imagery date 2009

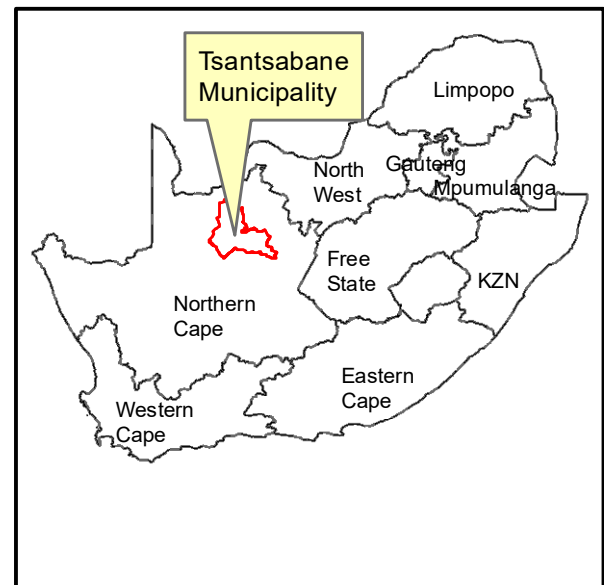
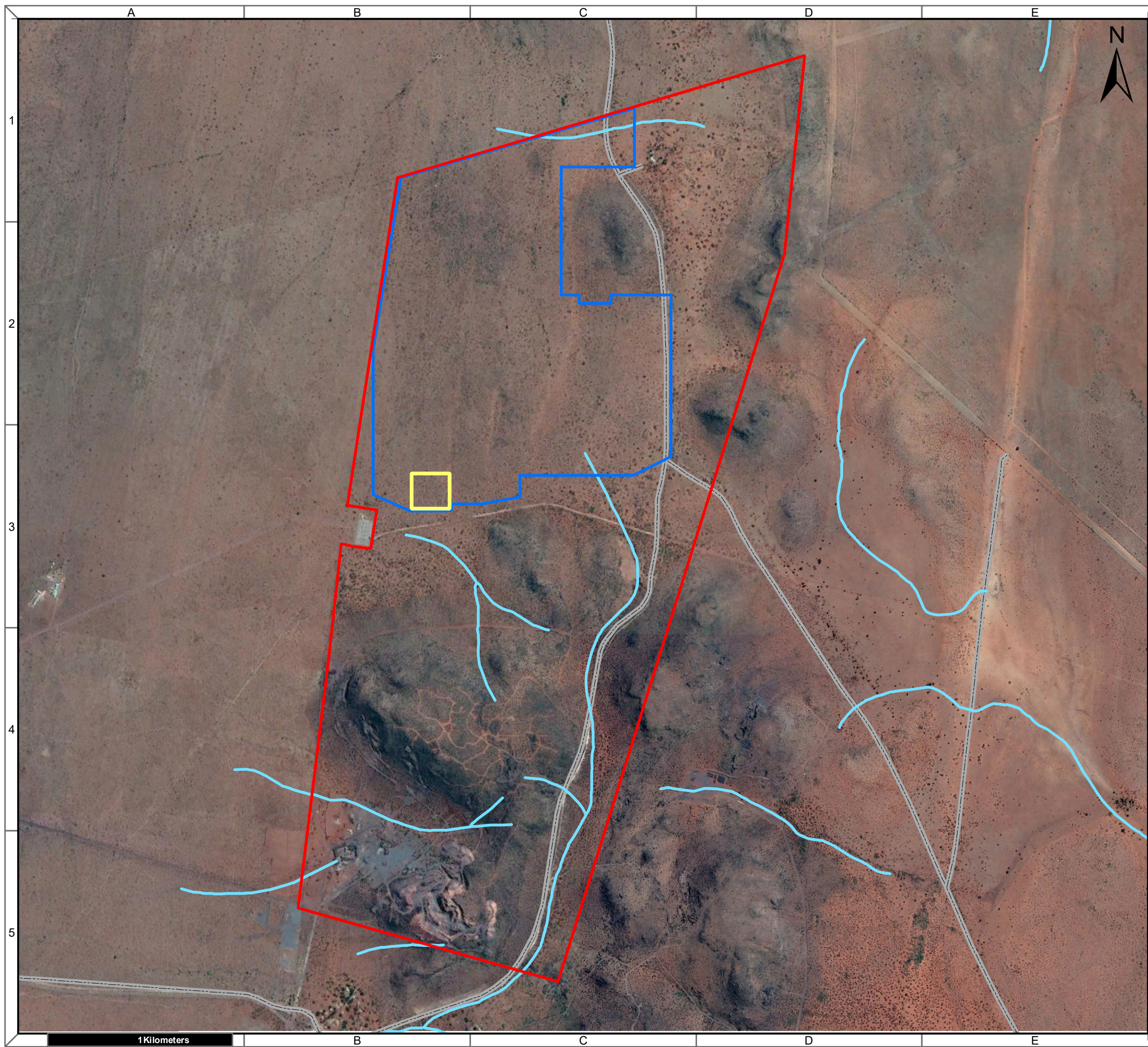


Map Drawn By:	Date	Reference
Melissa Mackay	2020/09/22	TSA309

Cape Environmental Assessment Practitioners (Pty) Ltd
 Telephone: +27 44 874 0365
 Facsimile: +27 44 874 0432
 Web: www.cape-eaprac.co.za

17 Progress St
 PO Box 2070
 George 6530

1:50 000 TOPOGRAPHICAL PLANS



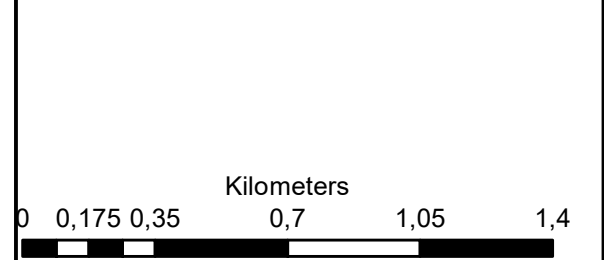
Postmasburg Solar PV Energy Facility2 Remaining Extent of Farm 436

Legend

- Remaining_Extent_Farm_436
- BESS
- Approved Footprint
- Perennial River
- Non Perennial River
- OTHER ACCESS

Notes

- Map Scale is 1: 20 000 when printed on A3
- Aerial image courtesy of Google Earth Pro 2020
- Imagery date March 2019



Map Drawn By:	Date	Reference
Melissa Mackay	2020/09/22	TSA309

Cape Environmental Assessment Practitioners (Pty) Ltd
Reg. No. 2008/004627/07

Telephone: +27 44 874 0365
 Facsimile: +27 44 874 0432
 Web: www.cape-eaprac.co.za

17 Progress St
 PO Box 2070
 George 6530

1Kilometers