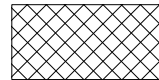



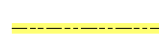



Doornhoek PV 2
Portion 18 of Farm Doornhoek 372
Klerksdorp

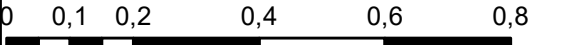
Legend

-  Doornhoek PV 2
-  Portion_18_of_372
-  Perennial Rivers
-  OTHER ACCESS
-  SECONDARY ROAD
-  POWER LINE SINGLE

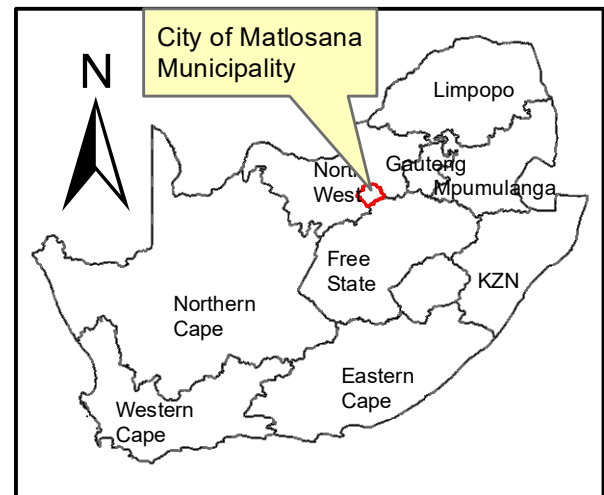
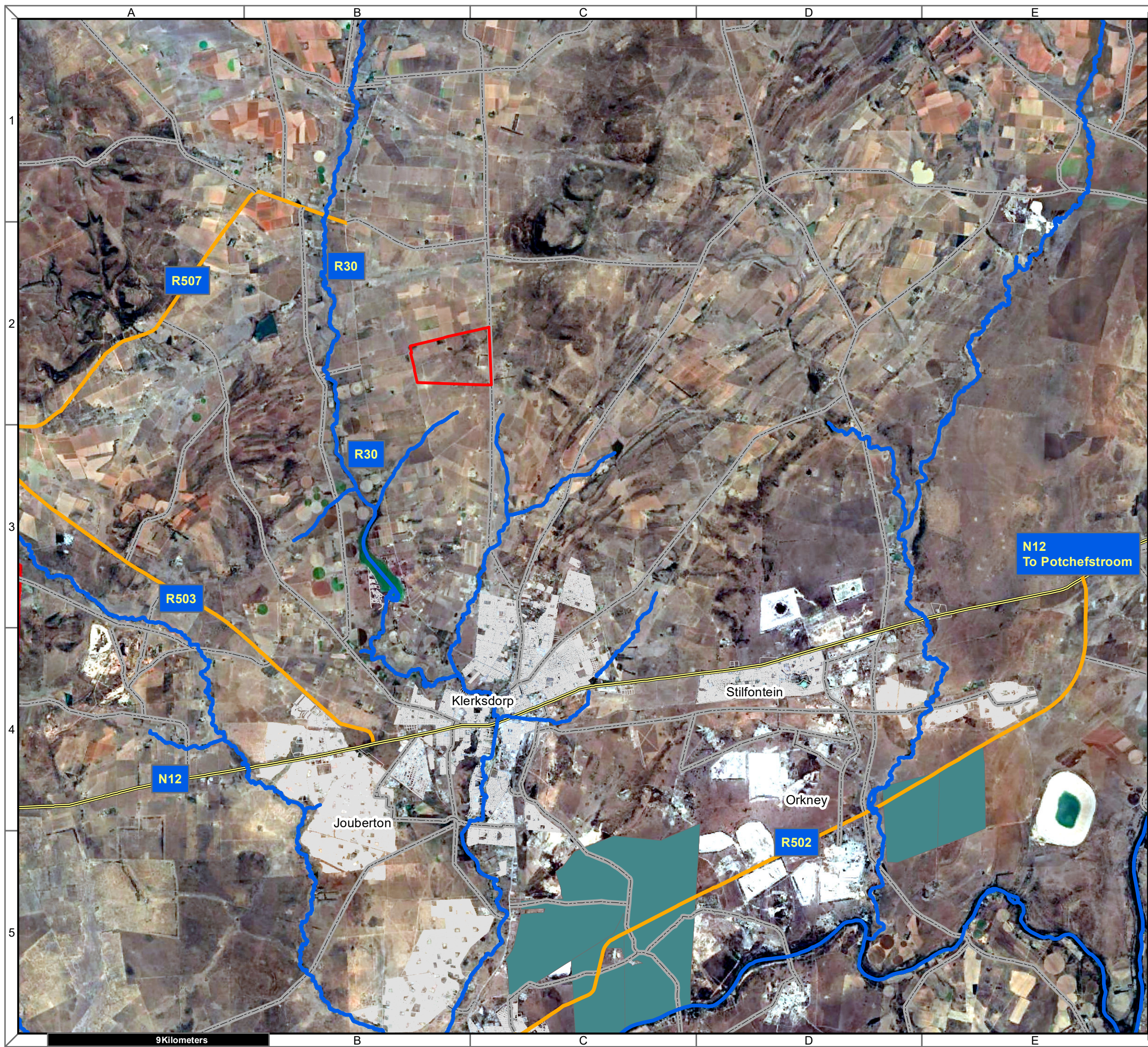
Notes

- Map Scale is 1: 12 000 when printed on A3
- Aerial image courtesy of Google Earth Pro 2022
- Imagery date June 2021

Kilometers



Map Drawn By:	Date	Reference
Melissa Mackay	2022/04/20	CML734



**Doornhoek PV Cluster
Portion 18 of Farm Doornhoek 372
Klerksdorp**

Legend

- Portion_18_of_372
- Perennial Rivers
- NATIONAL ROUTE
- MAIN ROAD
- SECONDARY ROAD
- Onshore Wind
- Solar PV

Notes

- Map Scale is 1: 150 000 when printed on A3
- Aerial image courtesy of Google Earth Pro 2021
- Imagery date June 2021
- Application data courtesy of DFFE EGIS

Kilometers

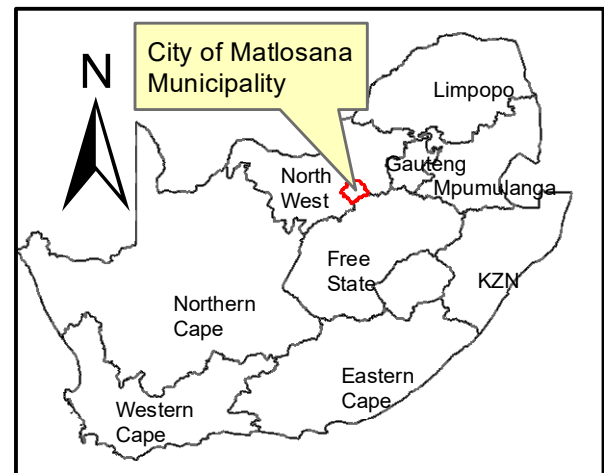
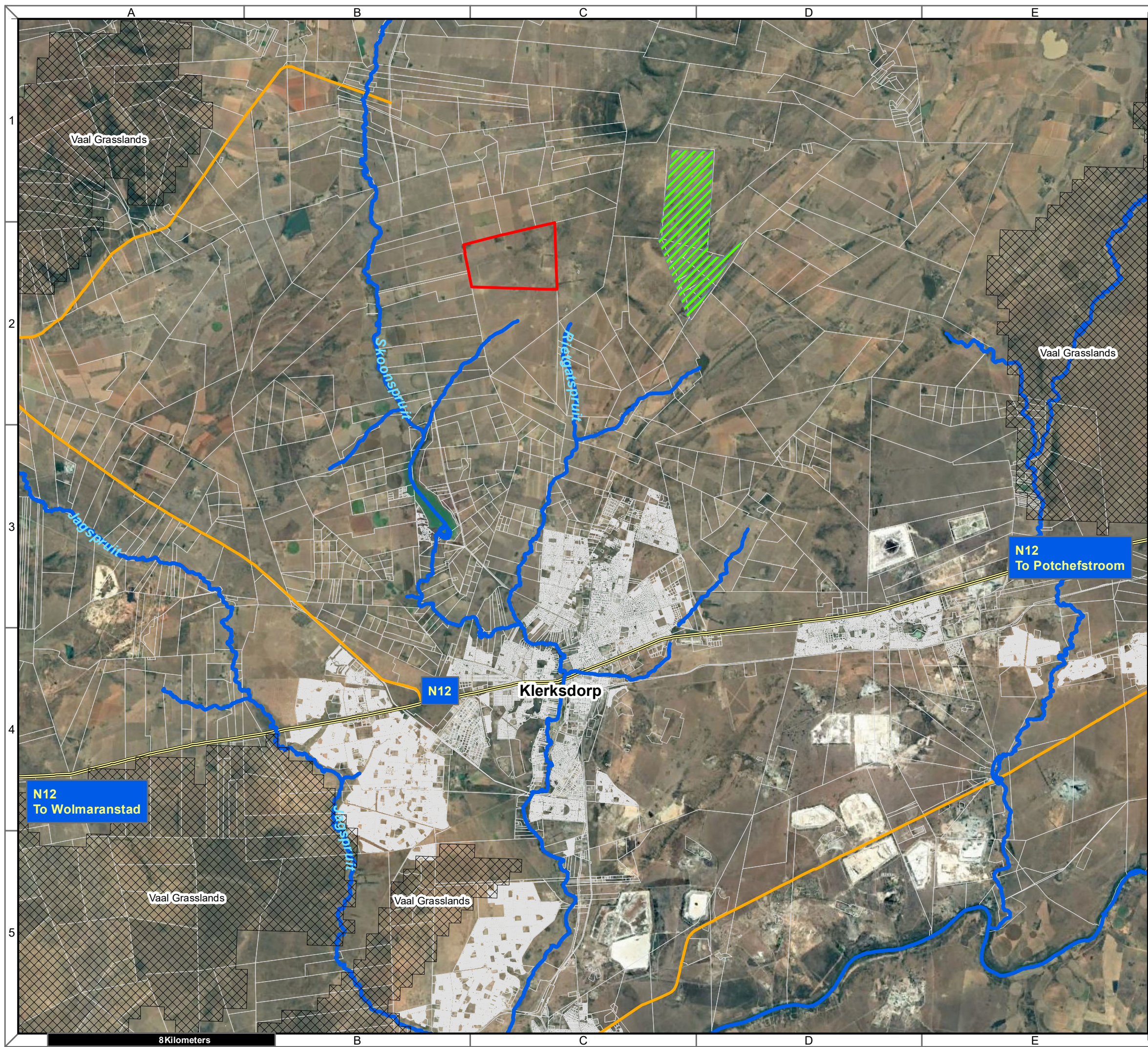
0 1,25 2,5 5 7,5 10

Map Drawn By:	Date	Reference
Melissa Mackay	2022/04/20	CML734

Cape Environmental Assessment Practitioners (Pty) Ltd
 Telephone: +27 44 874 0365
 Facsimile: +27 44 874 0432
 Web: www.cape-eaprac.co.za



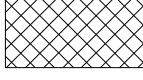



17 Progress St
 PO Box 2070
 George 6530

CUMULATIVE APPLICATIONS FOR RENEWABLE ENERGY



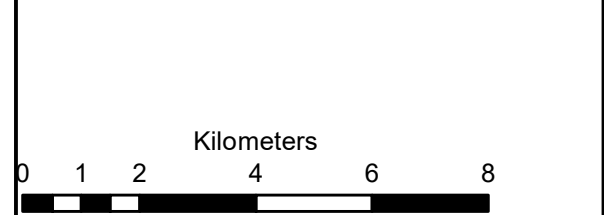
**Doornhoek PV Cluster
Portion 18 of Farm Doornhoek 372
Klerksdorp**

Legend

-  Portion_18_of_372
-  Formal_Protected_Areas
-  NPAES Focus Areas
-  Perennial Rivers
-  NATIONAL ROUTE
-  MAIN ROAD

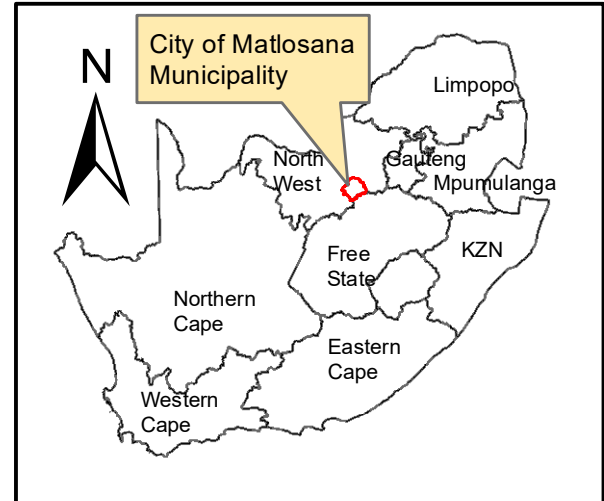
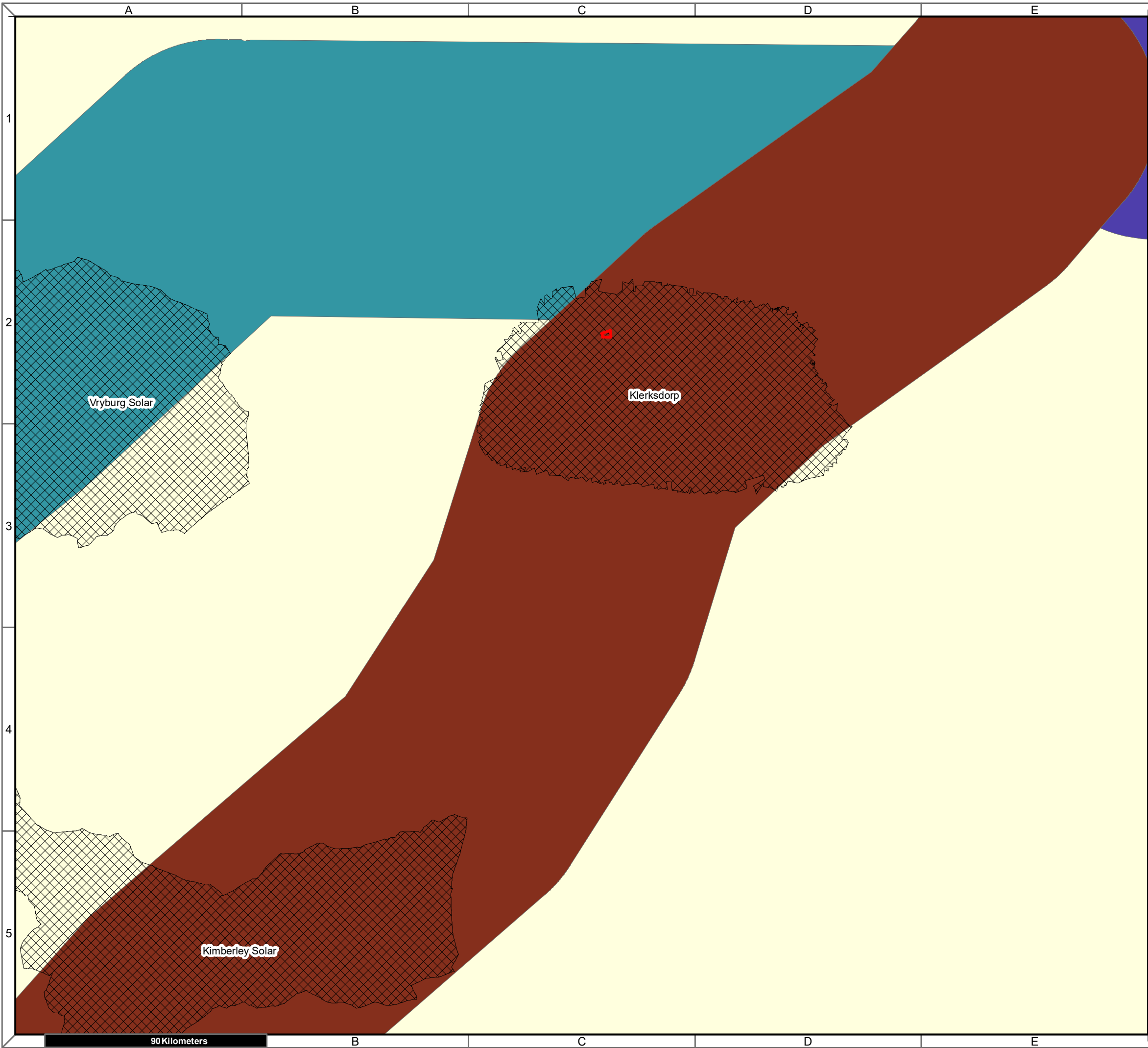
Notes

- Map Scale is 1: 130 000 when printed on A3
- Aerial image courtesy of Google Earth Pro 2021
- Imagery date Junel 2021
- NPAES (2010) data courtesy of SANBI BGIS
- SAPAD Q4 data courtesy of DFFE EGIS



Map Drawn By:	Date	Reference
Melissa Mackay	2022/05/04	CML734

Cape Environmental Assessment Practitioners (Pty) Ltd
 Reg. No. 2008/004627/07
 Telephone: +27 44 874 0365
 Facsimile: +27 44 874 0432
 Web: www.cape-eaprac.co.za
 17 Progress St
 PO Box 2070
 George 6530



**Doornhoek PV Cluster
Portion 18 of Farm Doornhoek 372
Klerksdorp**

Legend

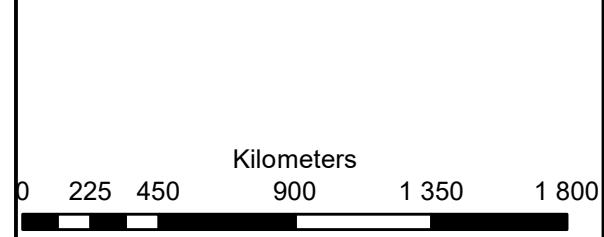
- Portion_18_of_372

Corridor

- Central corridor
- International corridor
- Northern corridor

Notes

- Map Scale is 1: 1 500 000 when printed on A3
- REDZ data courtesy of DFFE EGIS 2021

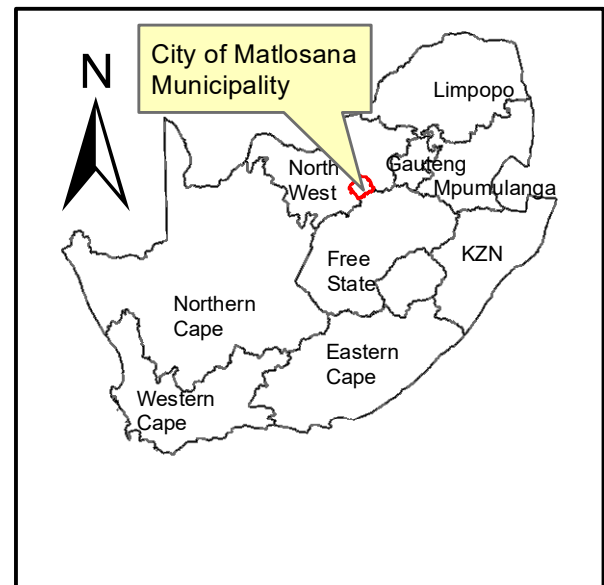
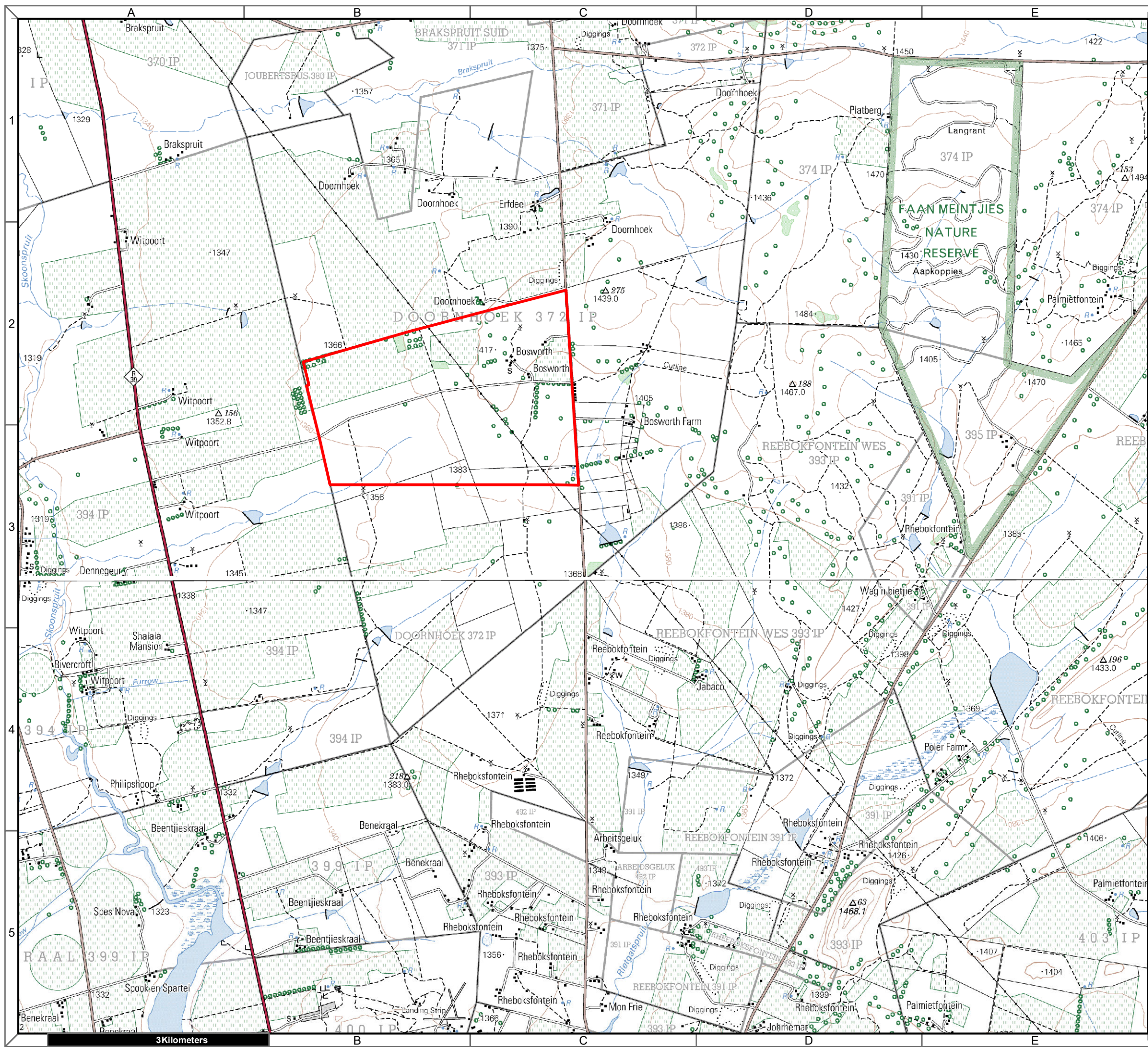


Cape Environmental Assessment Practitioners (Pty) Ltd
Reg. No. 2008/004627/07

Telephone: +27 44 874 0365
 Facsimile: +27 44 874 0432
 Web: www.cape-eaprac.co.za


17 Progress St
 PO Box 2070
 George 6530

90 Kilometers



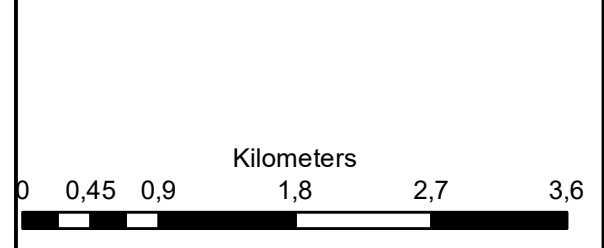
**Doornhoek PV Cluster
Portion 18 of Farm Doornhoek 372
Klerksdorp**

Legend

 Portion_18_of_372

Notes

- Map Scale is 1: 50 000 when printed on A3
- Topographical data courtesy of Surveyor General
- Imagery date 2006



Map Drawn By:	Date	Reference
Melissa Mackay	2022/04/20	CML734

Cape Environmental Assessment Practitioners (Pty) Ltd
 Telephone: +27 44 874 0365
 Facsimile: +27 44 874 0432
 Web: www.cape-eaprac.co.za
 17 Progress St
 PO Box 2070
 George 6530

1:50 000 TOPOGRAPHICAL PLANS