

Renewable energy development zone (REDZ) map

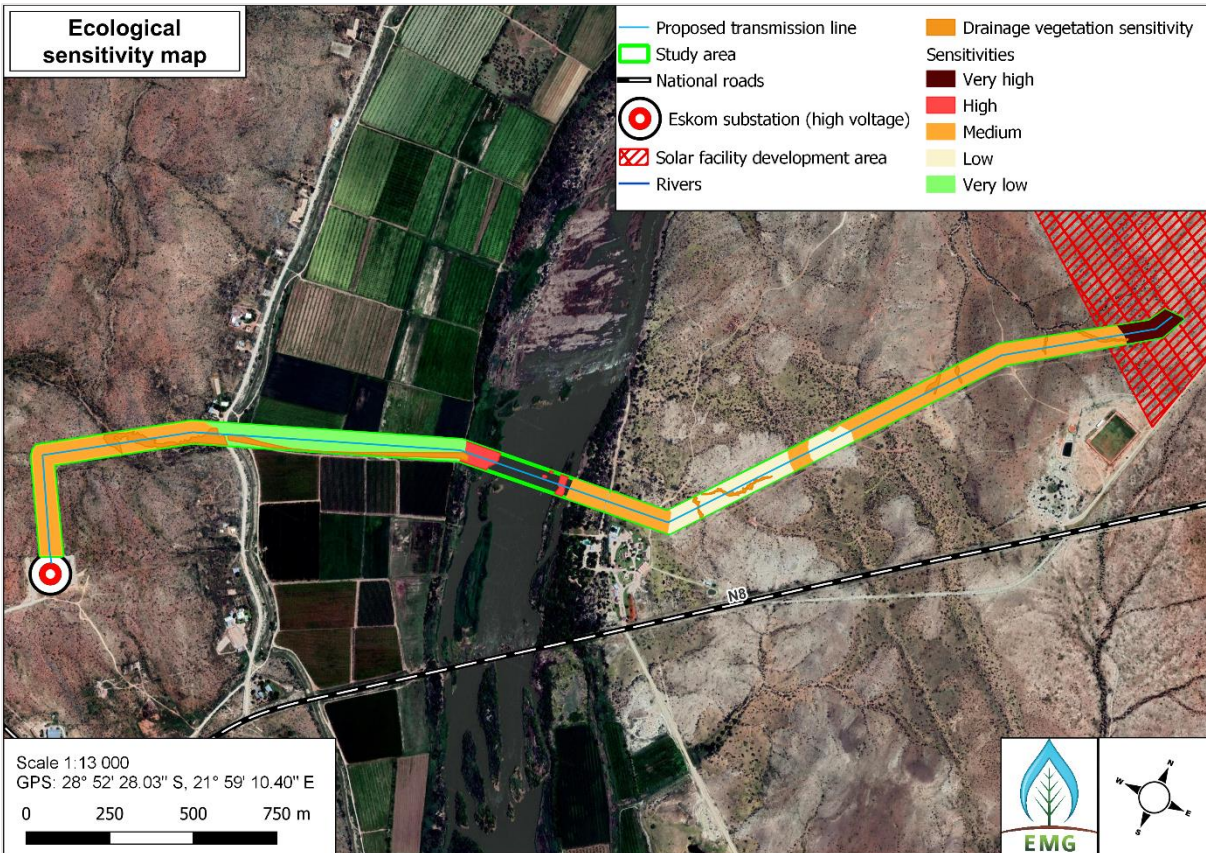


Scale 1:60 000
 GPS: 28° 52' 13.54" S, 21° 59' 36.17" E
 0 1 2 km

- Proposed transmission line
- Eskom substation (high voltage)
- REDZs
- Cities and towns
- Solar facility development area
- National roads
- Rivers



Ecological sensitivity map



Scale 1:13 000
 GPS: 28° 52' 28.03" S, 21° 59' 10.40" E
 0 250 500 750 m

- Proposed transmission line
- Study area
- National roads
- Eskom substation (high voltage)
- ▨ Solar facility development area
- Rivers
- Drainage vegetation sensitivity
- Sensitivities
- Very high
- High
- Medium
- Low
- Very low



Geology Map

