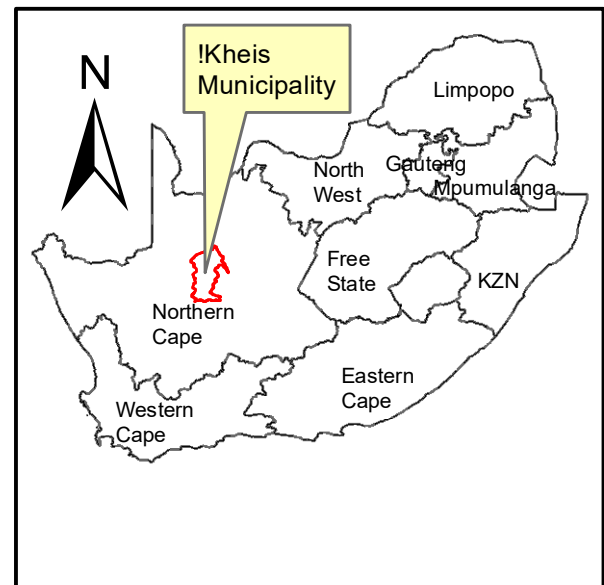


Kenhardt Access Road

- ⋯ Option A
- Option B
- Option C



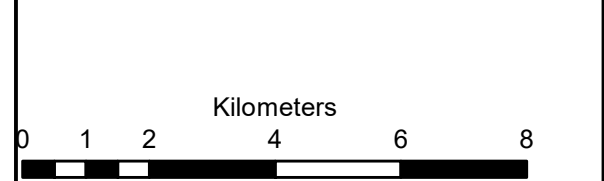
Kenhardt Access Road Remaining Extent of Onder Rugzeer Farm 168

Legend

- Remainder Farm 168
- ARTERIAL ROUTE
- MAIN ROAD
- SECONDARY ROAD
- OTHER ACCESS

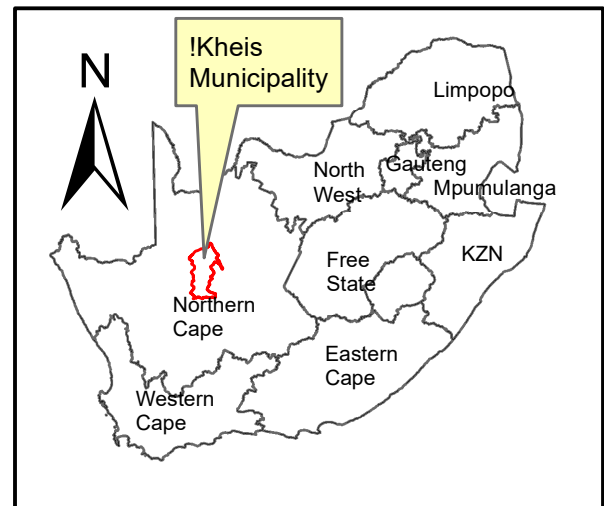
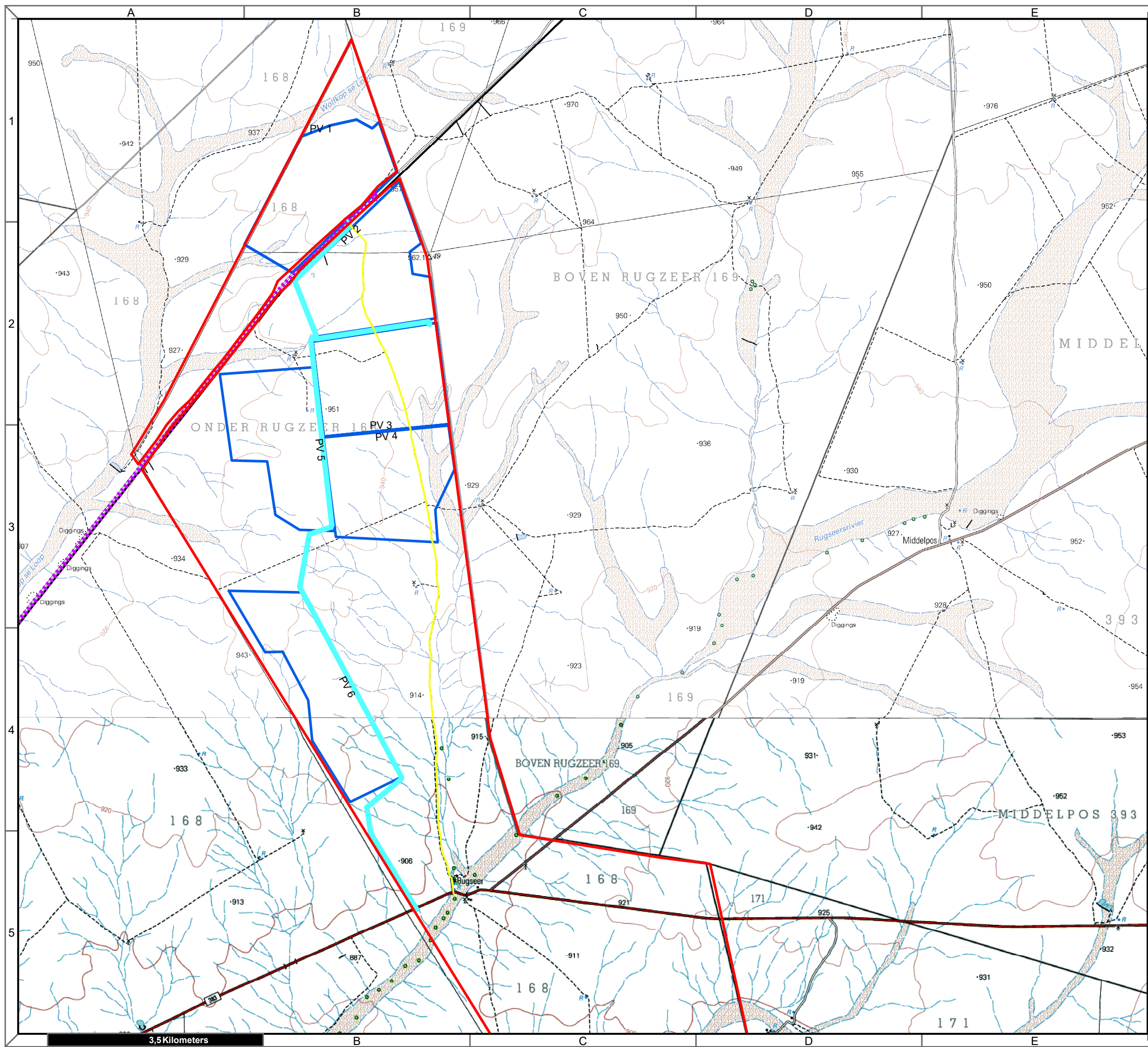
Notes

- Map Scale is 1: 120 000 when printed on A3
- Aerial image courtesy of Google Earth Pro 2020
- Imagery date February 2019
- Wind data courtesy of Metar 2017
- Nearest Metar station is Upington Airport (FAUP) approx. 42kms north



Map Drawn By:	Date	Reference
Melissa Mackay	2020/12/03	KAI663b

Cape Environmental Assessment Practitioners (Pty) Ltd
 Reg. No. 2008/004627/07
 Telephone: +27 44 874 0365
 Facsimile: +27 44 874 0432
 Web: www.cape-eaprac.co.za
 17 Progress St
 PO Box 2070
 George 6530



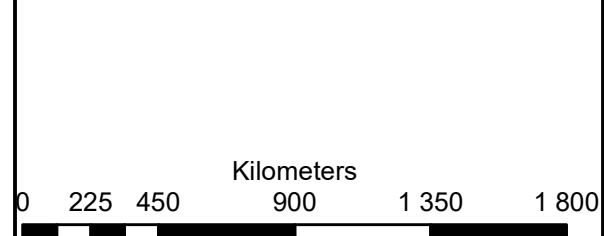
Kenhardt Access Road Remaining Extent of Onder Rugzeer Farm 168

Legend

- Remainder Farm 168
- Option A
- Option B
- Option C

Notes

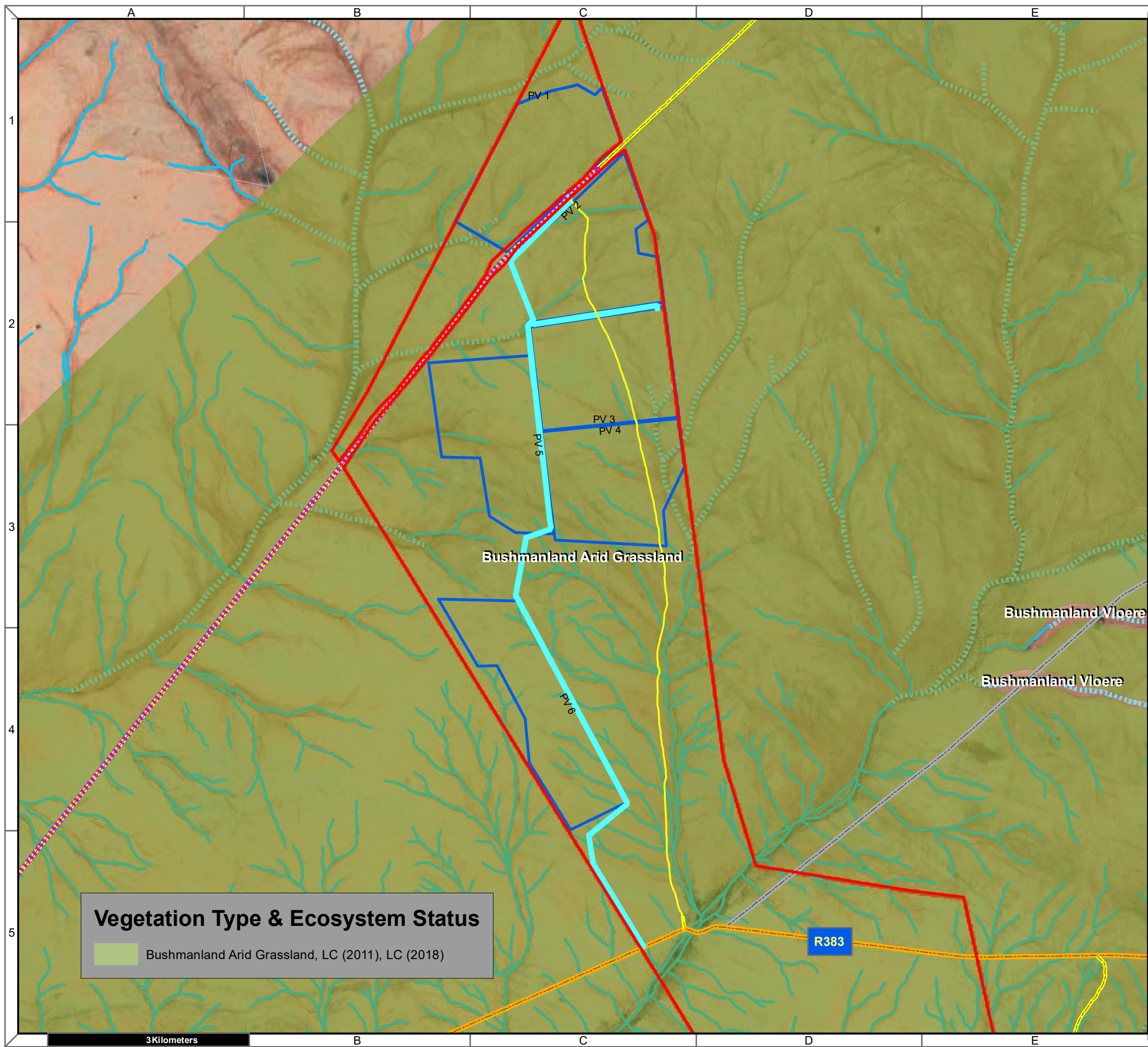
- Map Scale is 1: 60 000 when printed on A3
- Topographical data courtesy of Surveyor General
- Imagery date 2011



Map Drawn By:	Date	Reference
Melissa Mackay	2020/12/03	KAI663b

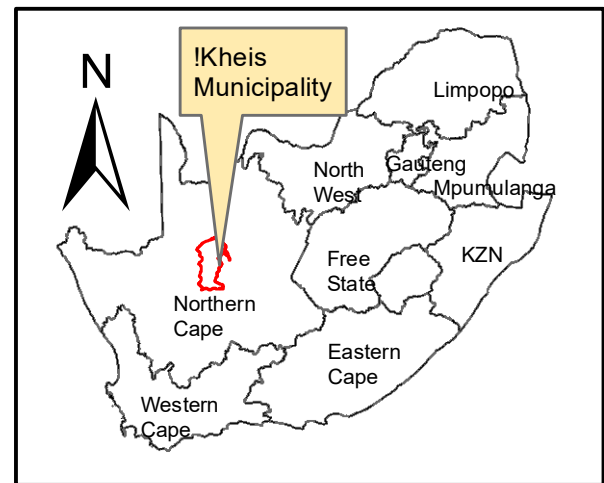
Cape Environmental Assessment Practitioners (Pty) Ltd
 Telephone: +27 44 874 0365
 Facsimile: +27 44 874 0432
 Web: www.cape-eaprac.co.za
 17 Progress St
 PO Box 2070
 George 6530

1:50 000 TOPOGRAPHICAL PLANS



Vegetation Type & Ecosystem Status

Bushmanland Arid Grassland, LC (2011), LC (2018)



**Kenhardt Access Road
Remaining Extent of Onder
Rugzeer Farm 168**

Legend

- Remainder Farm 168
- Option B
- Option A
- Option C
- MAIN ROAD
- OTHER ACCESS
- SECONDARY ROAD
- Non Perennial River
- Dry Watercourse

Notes

- Map Scale is 1: 55 000 when printed on A3
- Aerial image courtesy of Google Earth Pro 2020
- Imagery date February 2019
- Biodiversity data courtesy of SANBI BGIS 2020
- 2018 Threat Status Assessment (Skowno, A et al August 2019)
- LC (Least Concern), VU (Vulnerable), EN (Endangered), CR (Critically Endangered)

Kilometers

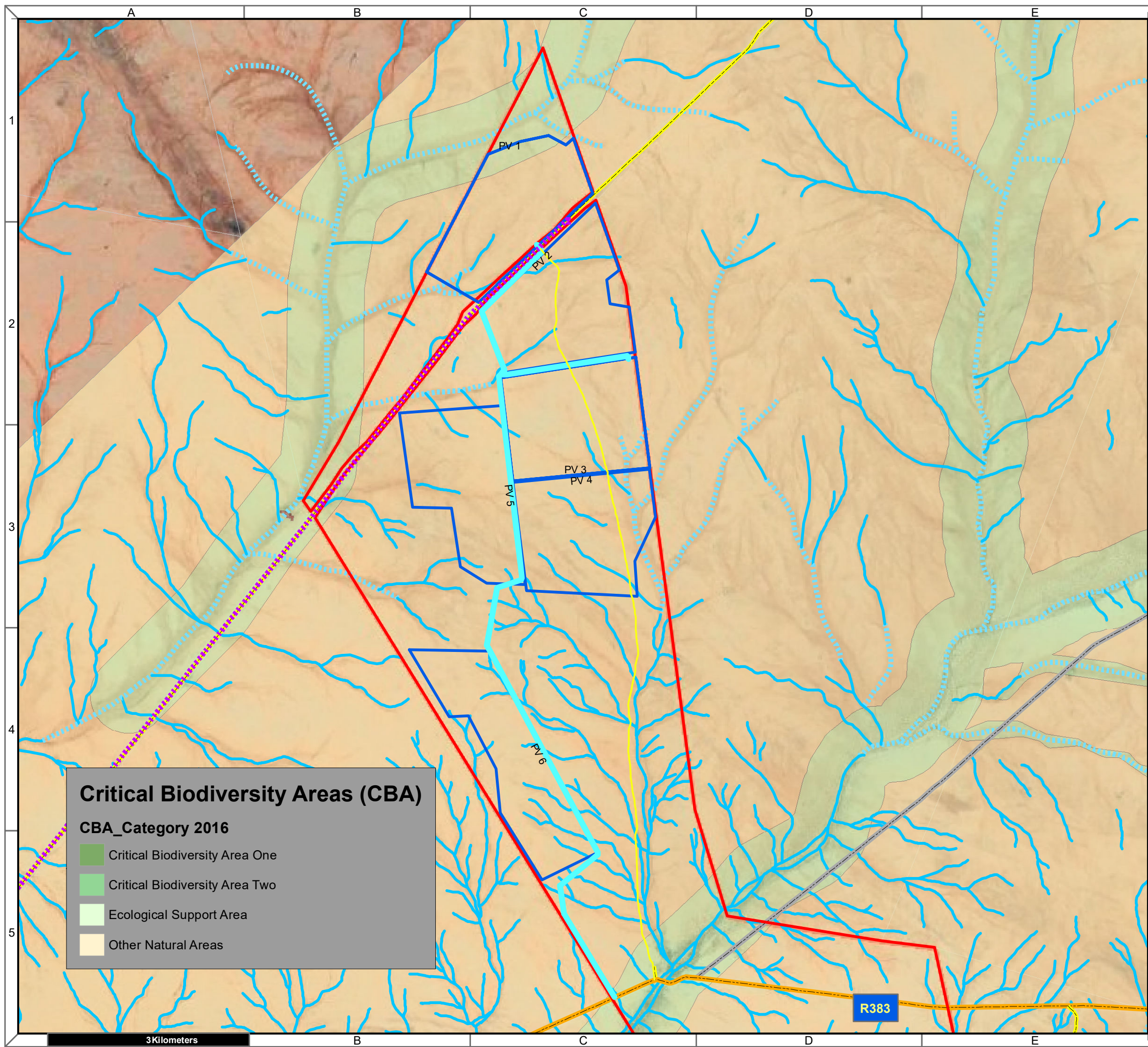
0 225 450 900 1 350 1 800

Map Drawn By:	Date	Reference
Melissa Mackay	2020/12/08	KAI663b

Cape Environmental Assessment Practitioners (Pty) Ltd
Reg. No. 2008/004627/07

Telephone: +27 44 874 0365 17 Progress St
 Facsimile: +27 44 874 0432 PO Box 2070
 Web: www.cape-eaprac.co.za George 6530

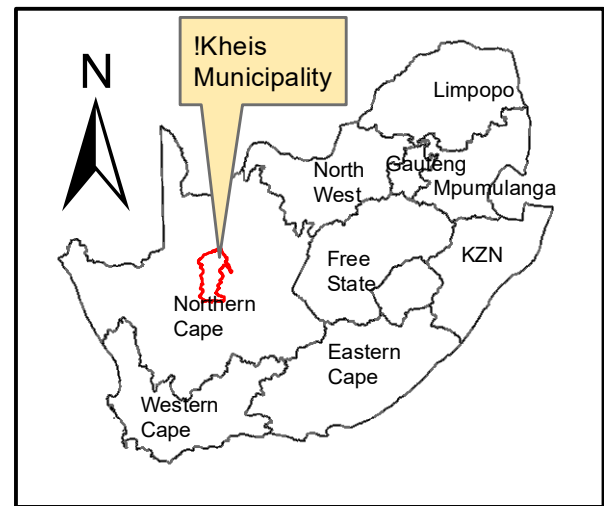
VEGETATION TYPE & ECOSYSTEM STATUS



Critical Biodiversity Areas (CBA)

CBA_Category 2016

- Critical Biodiversity Area One
- Critical Biodiversity Area Two
- Ecological Support Area
- Other Natural Areas



**Kenhardt Access Road
Remaining Extent of Onder
Rugzeer Farm 168**

Legend

- Remainder Farm 168
- Option A
- Option B
- Option C
- MAIN ROAD
- OTHER ACCESS
- SECONDARY ROAD
- Non Perennial River
- Dry Watercourse

Notes

- Map Scale is 1: 55 000 when printed on A3
- Aerial image courtesy of Google Earth Pro 2020
- Imagery date February 2019
- Biodiversity data courtesy of SANBI BGIS 2020
- Northern Cape CBA 2016

Kilometers

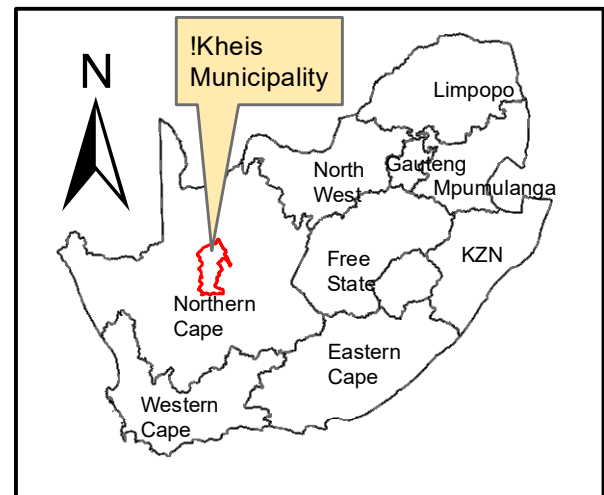
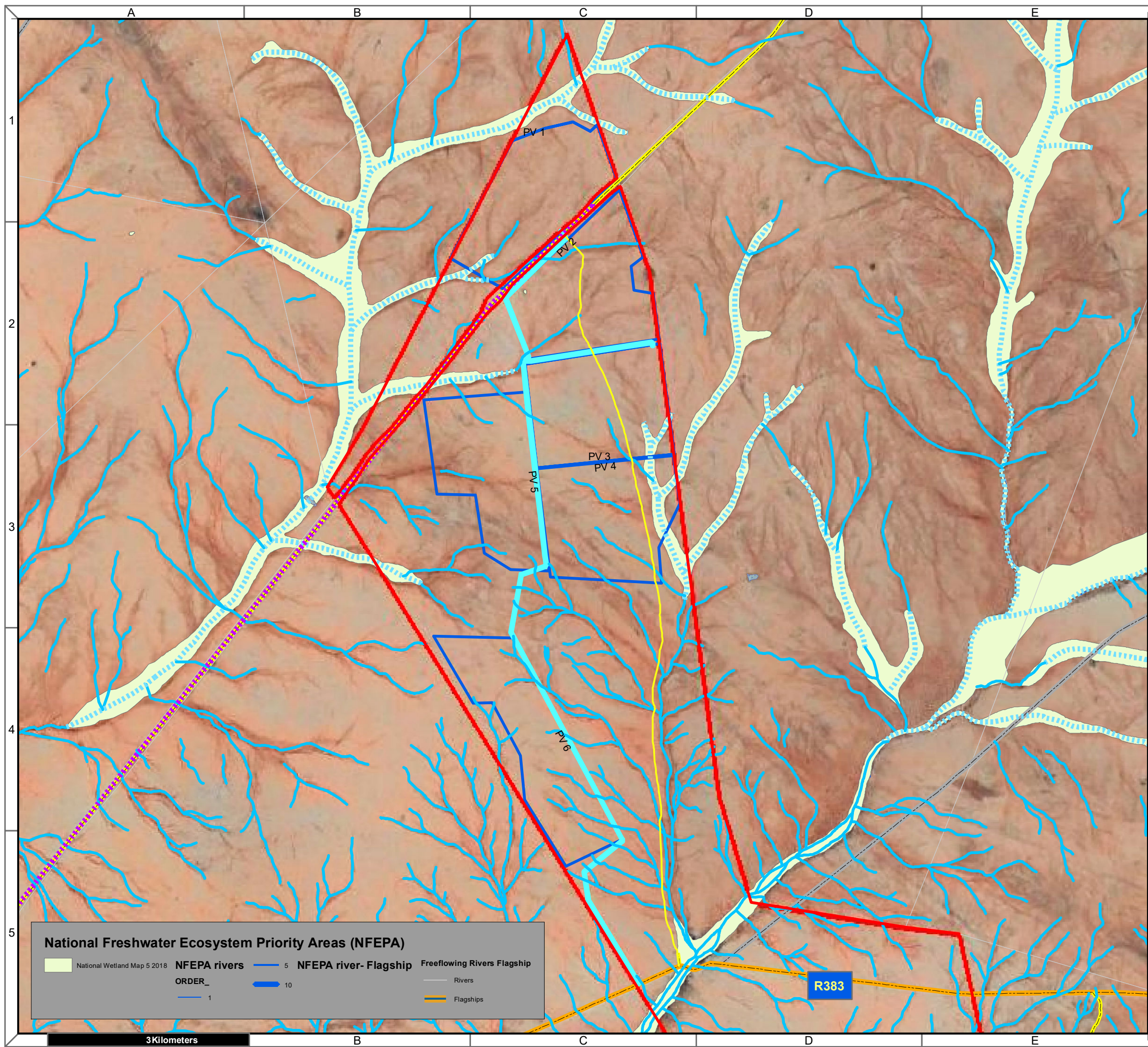
0 225 450 900 1 350 1 800

Map Drawn By:	Date	Reference
Melissa Mackay	2020/12/08	KAI663b

Cape Environmental Assessment Practitioners (Pty) Ltd
 Telephone: +27 44 874 0365
 Facsimile: +27 44 874 0432
 Web: www.cape-eaprac.co.za

17 Progress St
 PO Box 2070
 George 6530

CRITICAL BIODIVERSITY AREAS



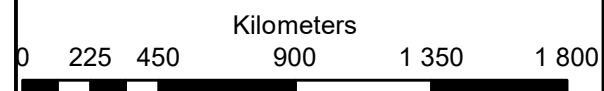
Kenhardt Access Road Remaining Extent of Onder Rugzeer Farm 168

Legend

- Remainder Farm 168
- Option B
- Option A
- Non Perennial River
- Dry Watercourse
- Option C
- MAIN ROAD
- OTHER ACCESS
- SECONDARY ROAD

Notes

- Map Scale is 1: 55 000 when printed on A3
- Aerial image courtesy of Google Earth Pro 2020
- Imagery date February 2019
- Biodiversity data courtesy of SANBI BGIS 2020



Map Drawn By:	Date	Reference
Melissa Mackay	2020/12/08	KAI663b

National Freshwater Ecosystem Priority Areas (NFEPA)

 National Wetland Map 5 2018	NFEPA rivers	 5	NFEPA river- Flagship	 10	Freeflowing Rivers Flagship
	ORDER_	 1			 Rivers
					 Flagships

Cape Environmental Assessment Practitioners (Pty) Ltd
 Reg. No. 2008/004627/07
 Telephone: +27 44 874 0365
 Facsimile: +27 44 874 0432
 Web: www.cape-eaprac.co.za
 17 Progress St
 PO Box 2070
 George 6530

NATIONAL FRESHWATER ECOSYSTEM PRIORITY AREAS (NFEPA)