

Appendix A:

Mapping and Photographs

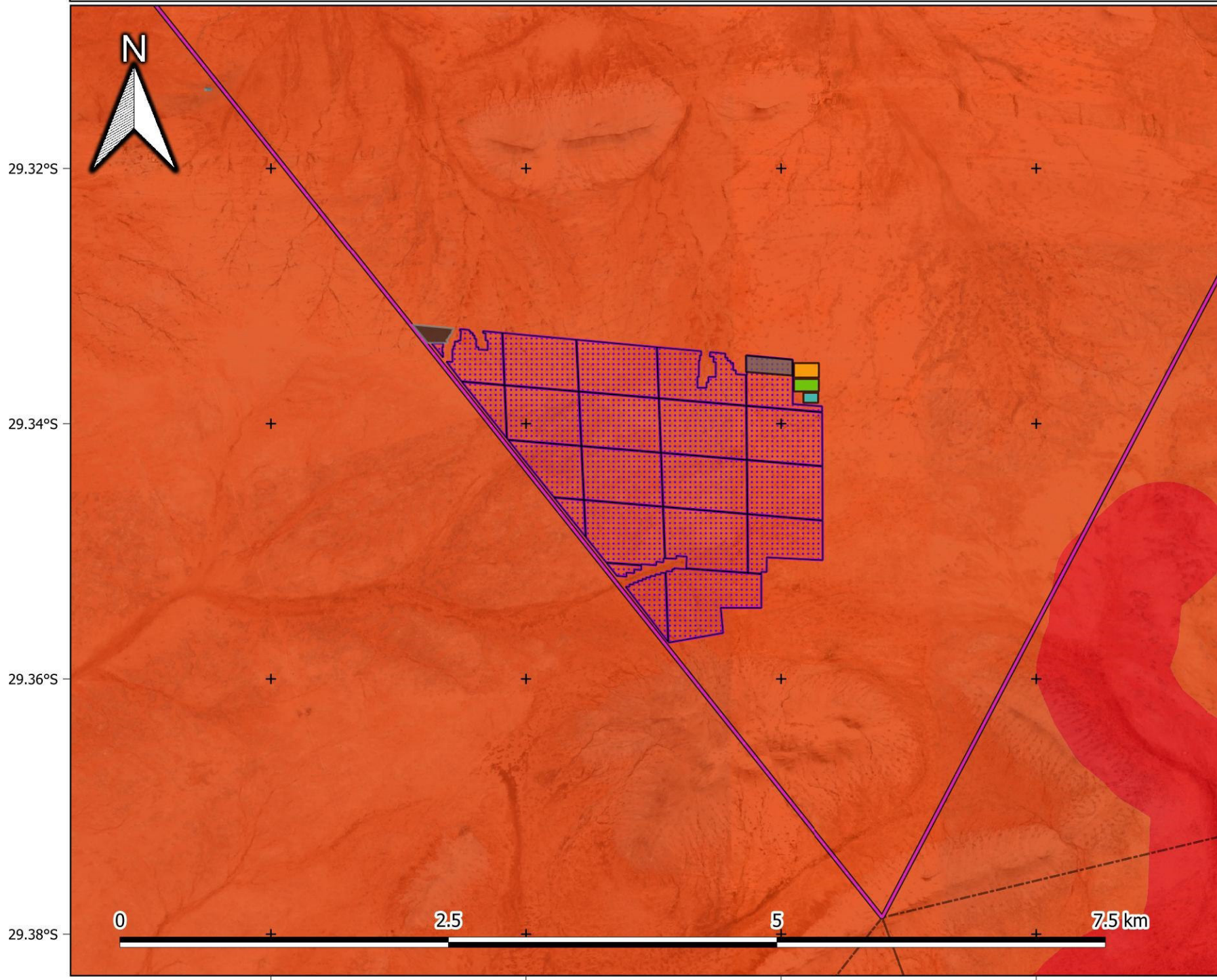


Appendix A1:

Mapping



De Rust: Solar PV1 - Critical Biodiversity Areas



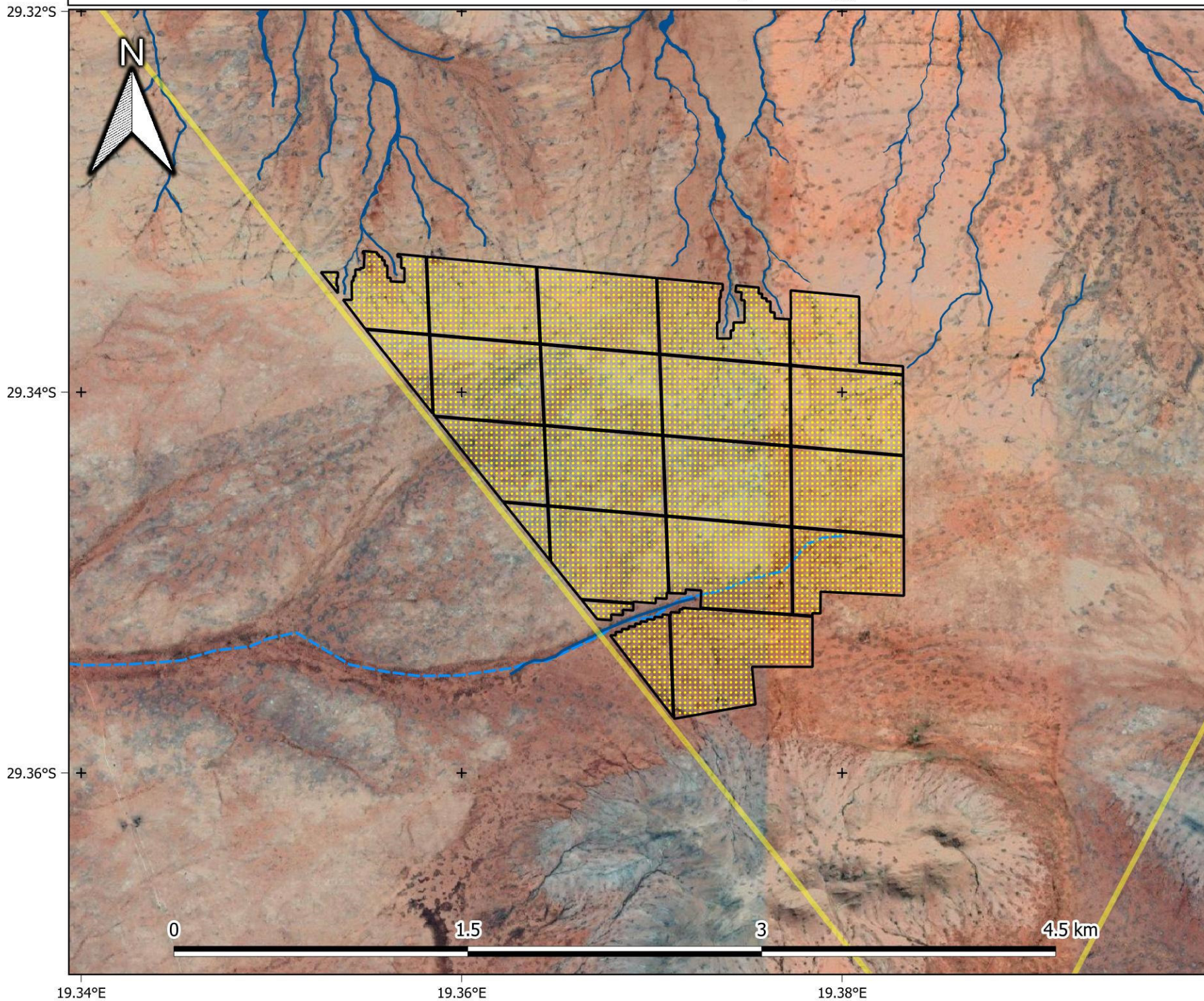
Legend

- Farm portion
- Proposed infrastructure**
 - Solar PV area (alternative 1)
 - BESS
 - O&M building
 - OSS
 - Accommodation
 - Temp. laydown
- Critical Biodiversity Areas (NC 2018)**
 - CBA 1
 - CBA 2
 - ESA
 - ONA

1:30 000



De Rust: Solar PV1 - Hydrology



Legend

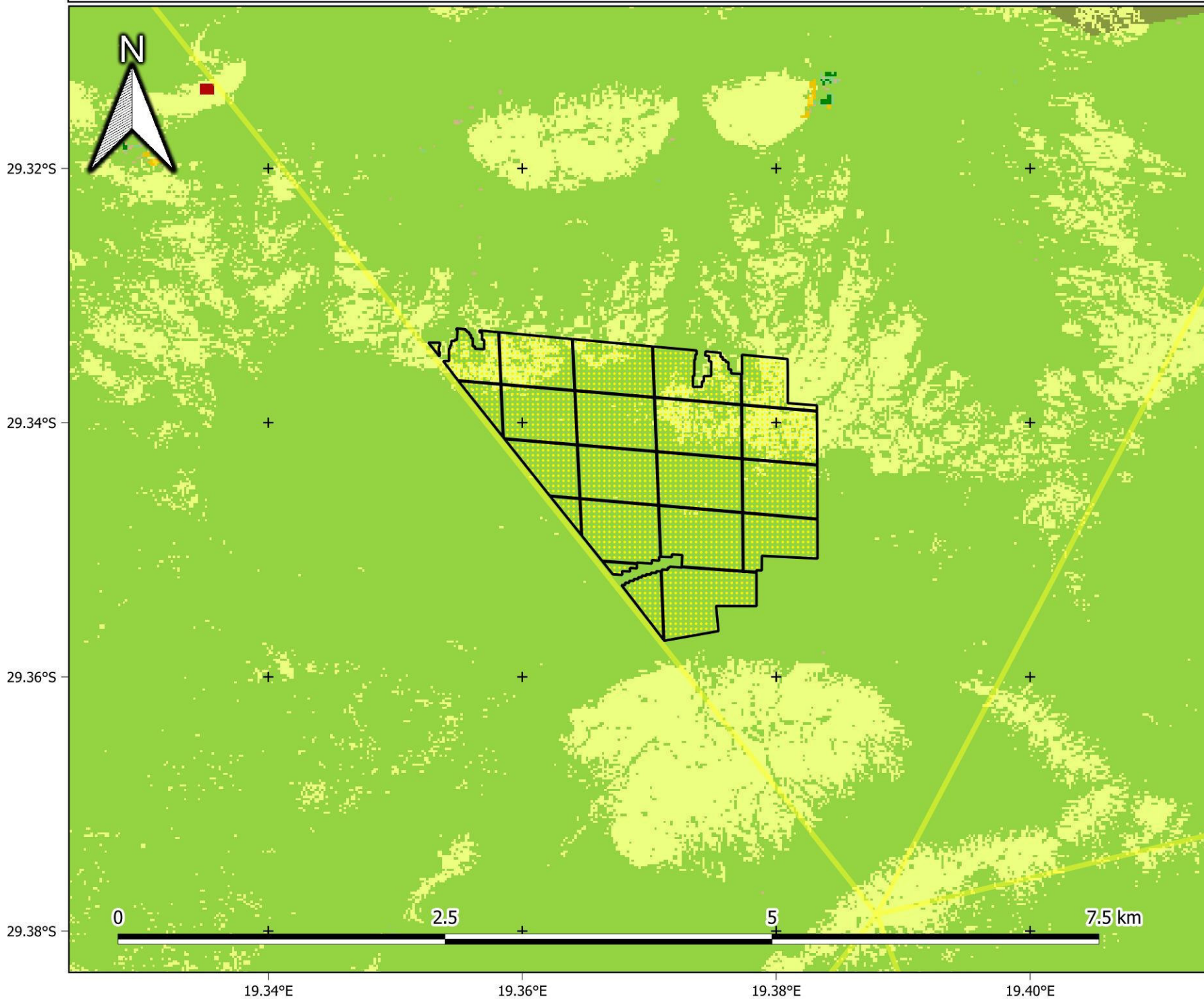
- Solar PV area
- Farm portions
- Aquatic ecologist's delineations**
 - Watercourses
- NFEPA (2012)**
 - Rivers
 - Wetlands

1:20 000

Provincial Context



De Rust: Solar PV1 - Land Cover



Legend

Solar PV area

Farm portions

National Land Cover (SA NLC 2018)

Low Shrubland (other regions)

Low Shrubland (Succulent Karoo)

Low Shrubland (Nama Karoo)

Dry Pans

Bare Riverbed Material

Bare Ground

Roads and Rail

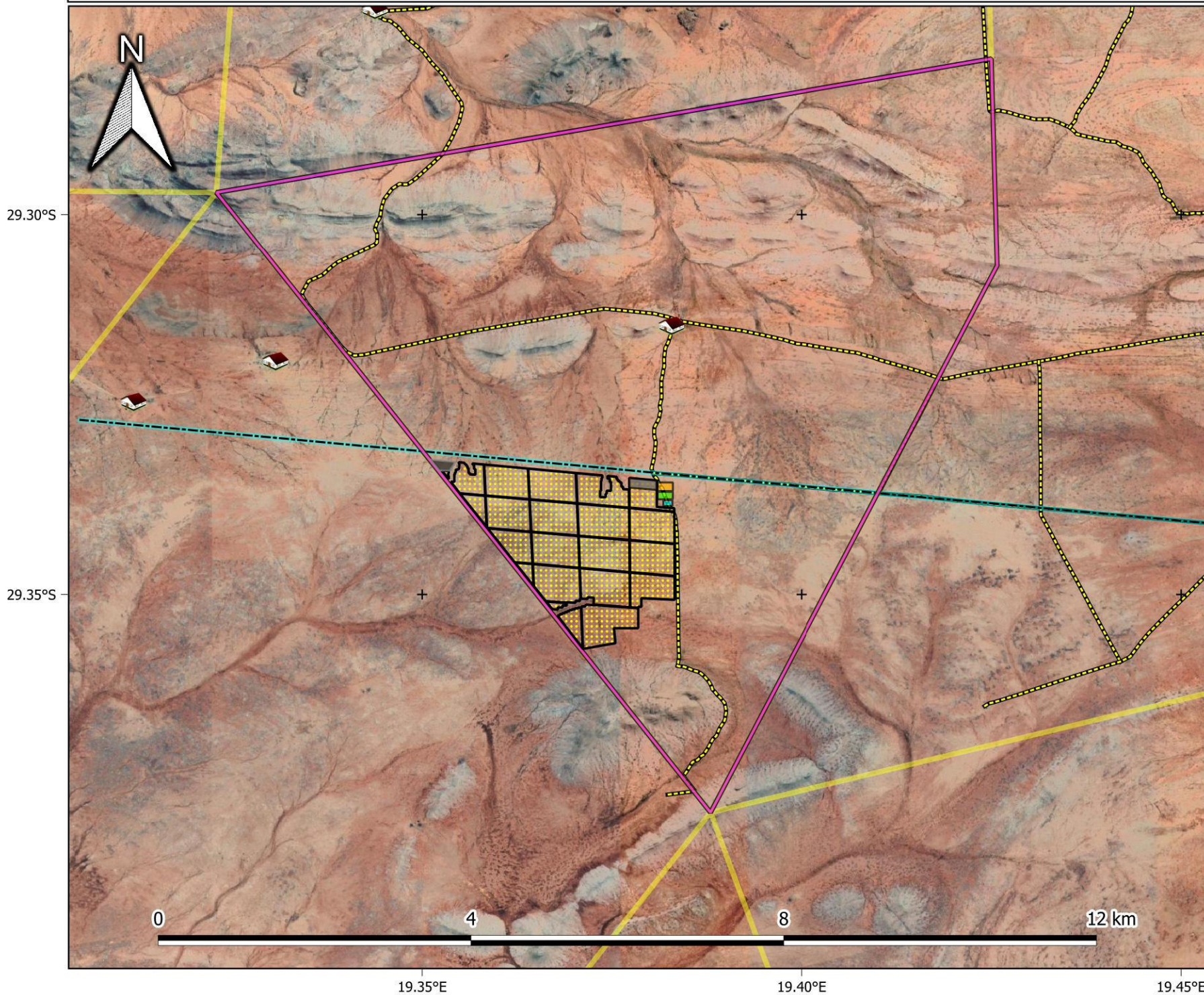
Mines

1:30 000

Provincial Context



De Rust: Solar PV1 - Layout



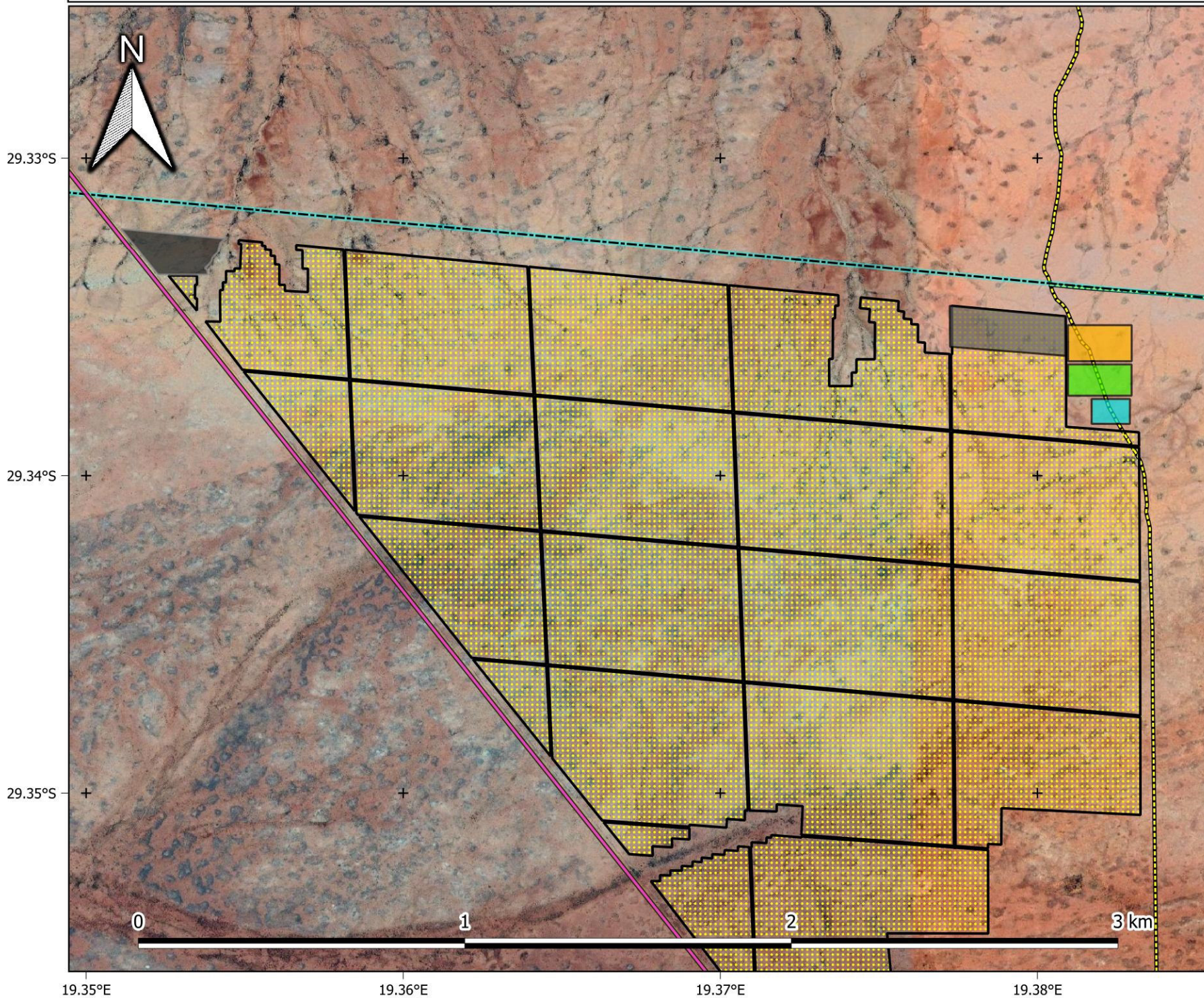
Legend

- Farm portion
 - Parent farms
 - Existing infrastructure**
 - Farm houses
 - OH powerlines
 - Roads
 - Proposed infrastructure**
 - Solar PV area (alternative 1)
 - BESS
 - O&M building
 - OSS
 - Accommodation
 - Temp. laydown
- 1:50 000

Provincial Context



De Rust: Solar PV1 - Layout



Legend

- Farm portion
- Parent farms

Existing infrastructure

- Farm houses
- OH powerlines
- Roads

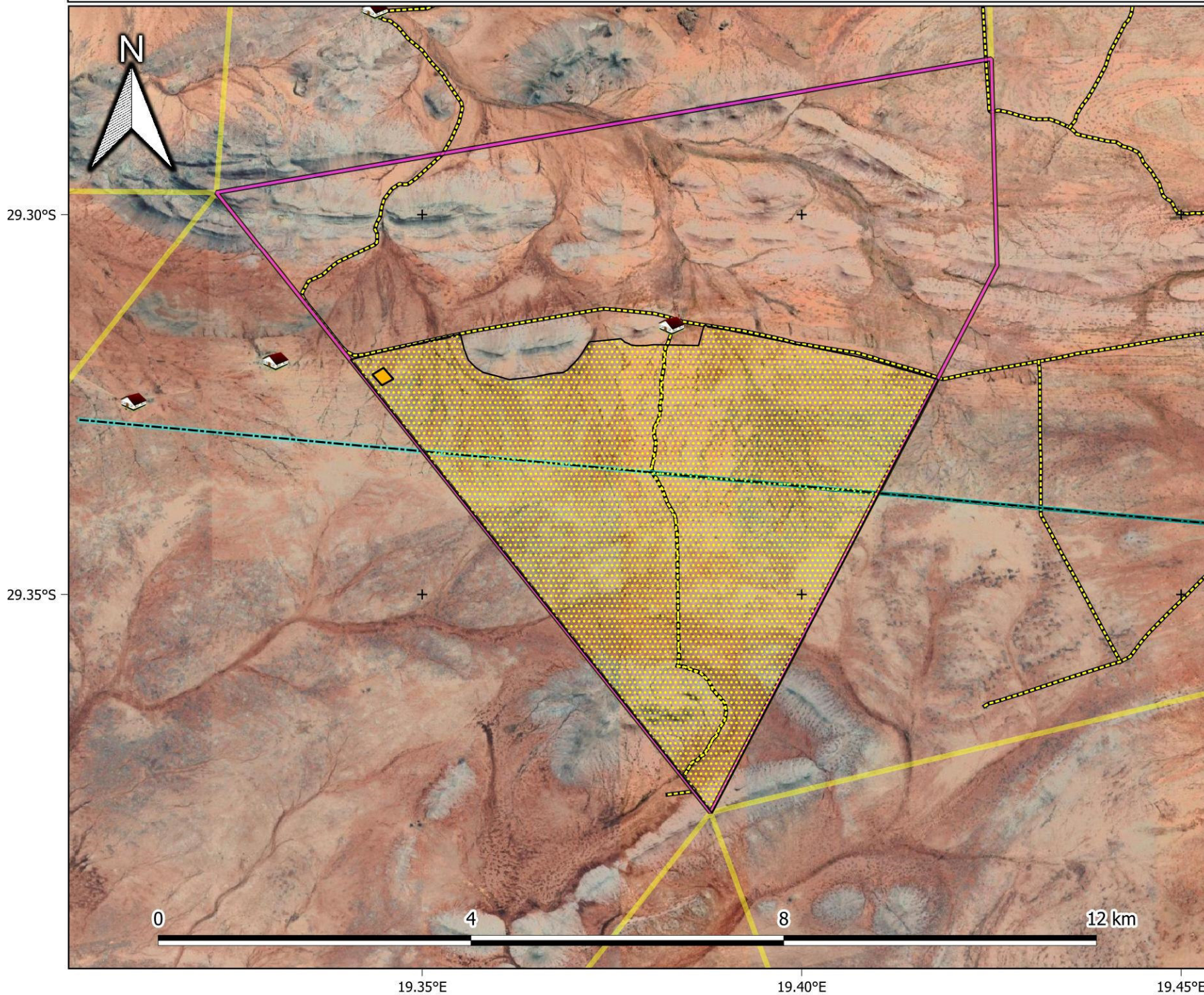
Proposed infrastructure

- Solar PV area (alternative 1)
 - BESS
 - O&M building
 - OSS
 - Accommodation
 - Temp. laydown
- 1:12 000

Provincial Context



De Rust: Solar PV - Layout (Alternative 2)

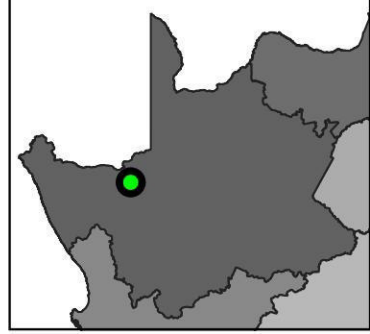


Legend

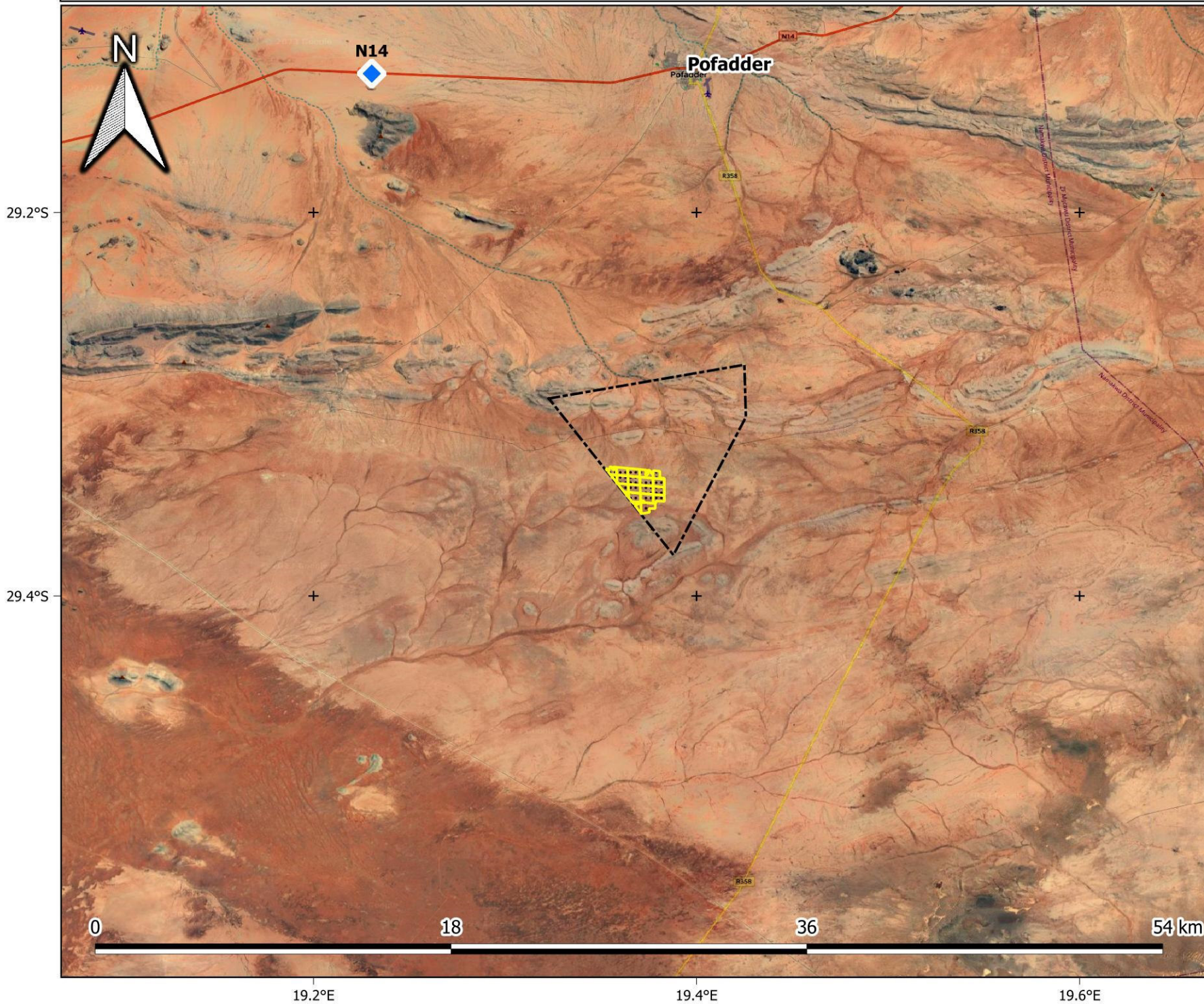
- Farm portion
- Parent farms
- Existing infrastructure**
 - Farm houses
 - OH powerlines
 - Roads
- Proposed infrastructure**
 - Solar PV area (alternative 2)
 - OSS

1:50 000

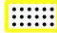

Provincial Context



De Rust: Solar PV1 - Aerial

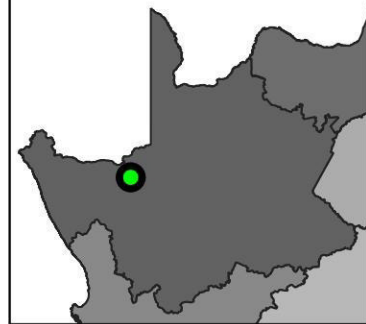


Legend

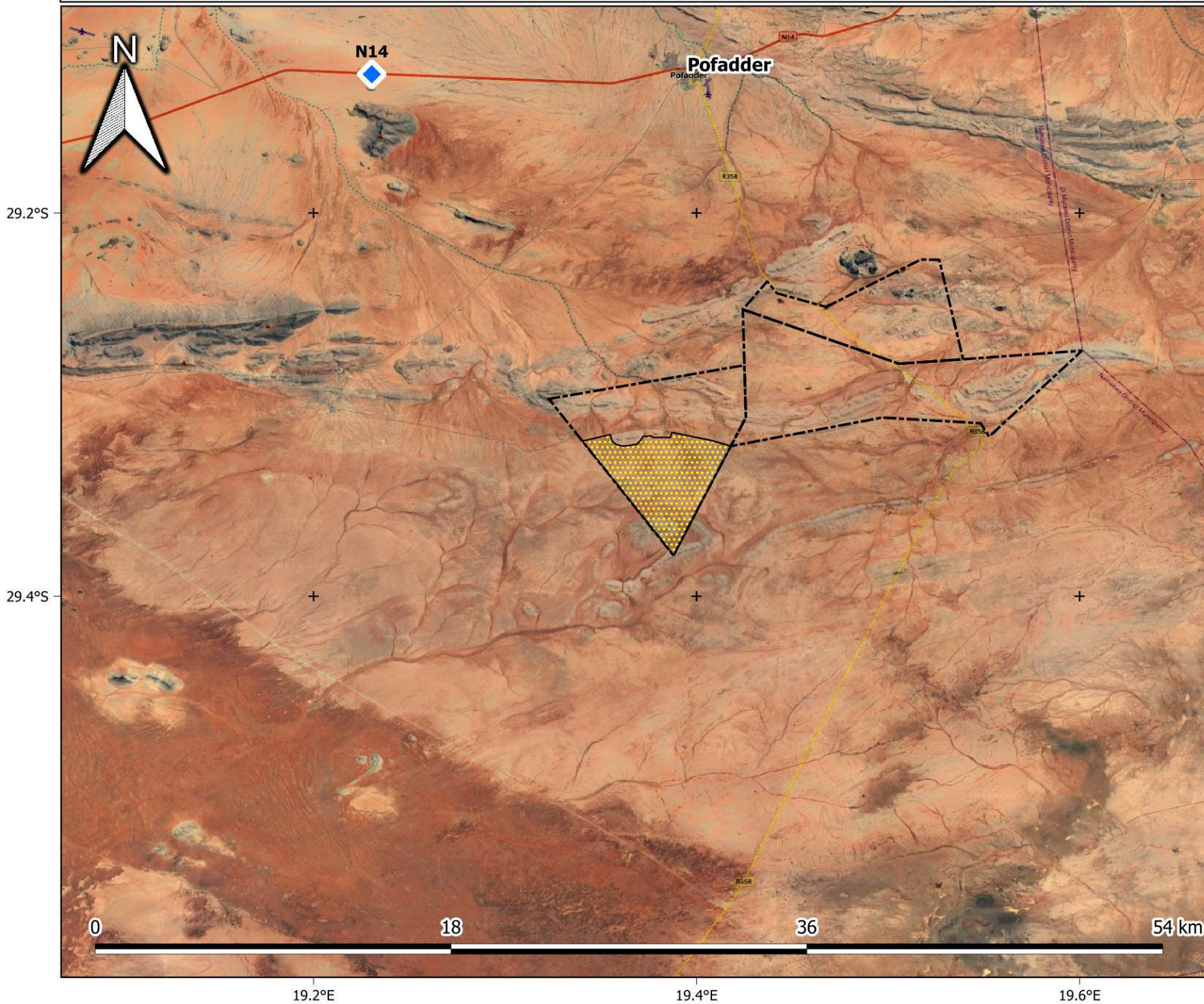
-  Solar PV1 area
-  Farm portion

1:200 000



Provincial Context



De Rust: Solar PV - Alternative Aerial (Location)



Legend

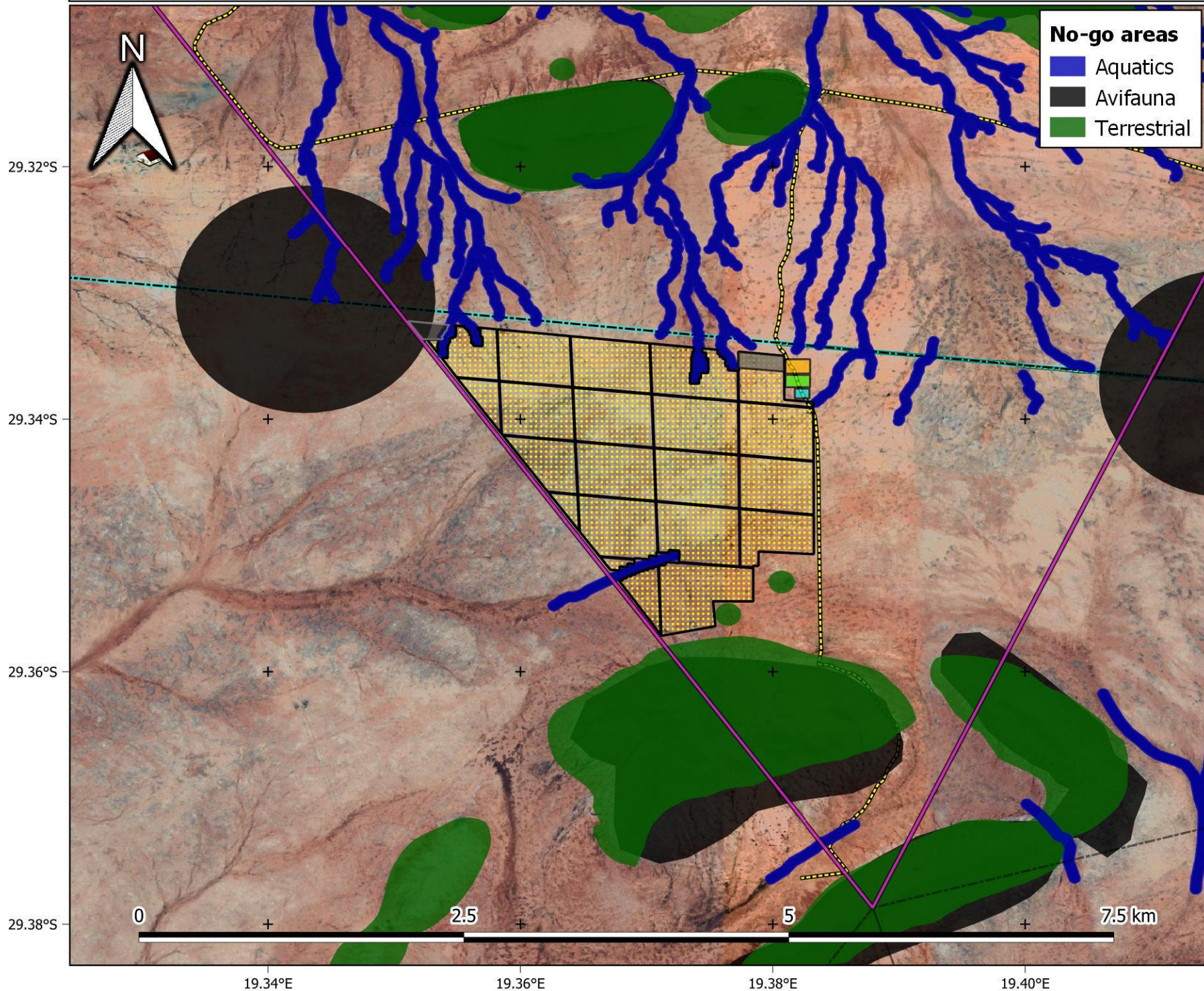
-  Solar PV area
-  Farm portion

1:200 000

Provincial Context



De Rust: Solar PV1 - No-Go Areas



No-go areas

- Aquatics
- Avifauna
- Terrestrial

Legend

Farm portion

Existing infrastructure

- Farm houses
- OH powerlines
- Roads

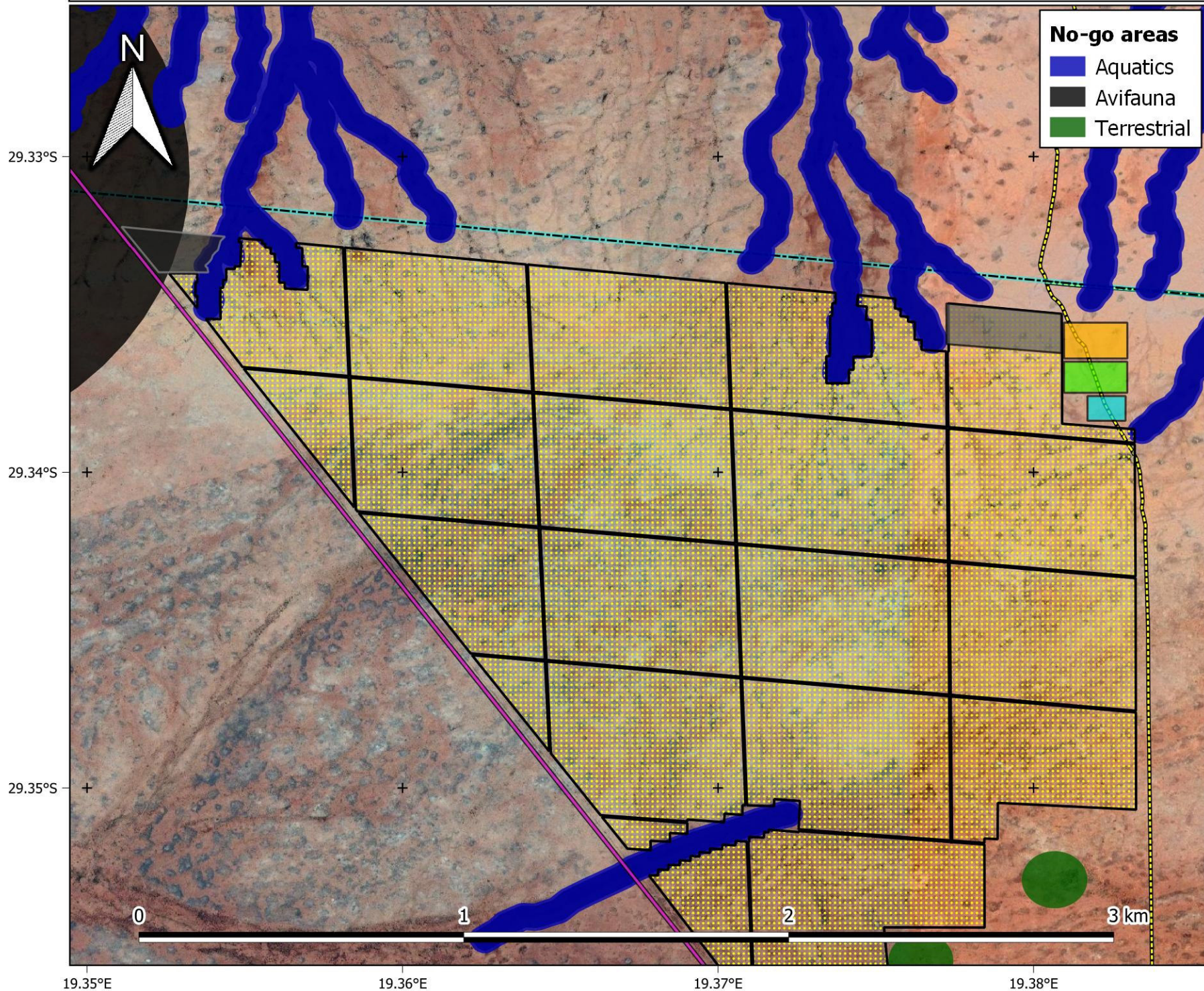
Proposed infrastructure

- Solar PV area (alternative 1)
- BESS
- O&M building
- OSS
- Accommodation
- Temp. laydown

1:30 000



De Rust: Solar PV1 - No-Go Areas



No-go areas

- Aquatics
- Avifauna
- Terrestrial

Legend

- Farm portion

Existing infrastructure

- Farm houses
- - - OH powerlines
- - - Roads

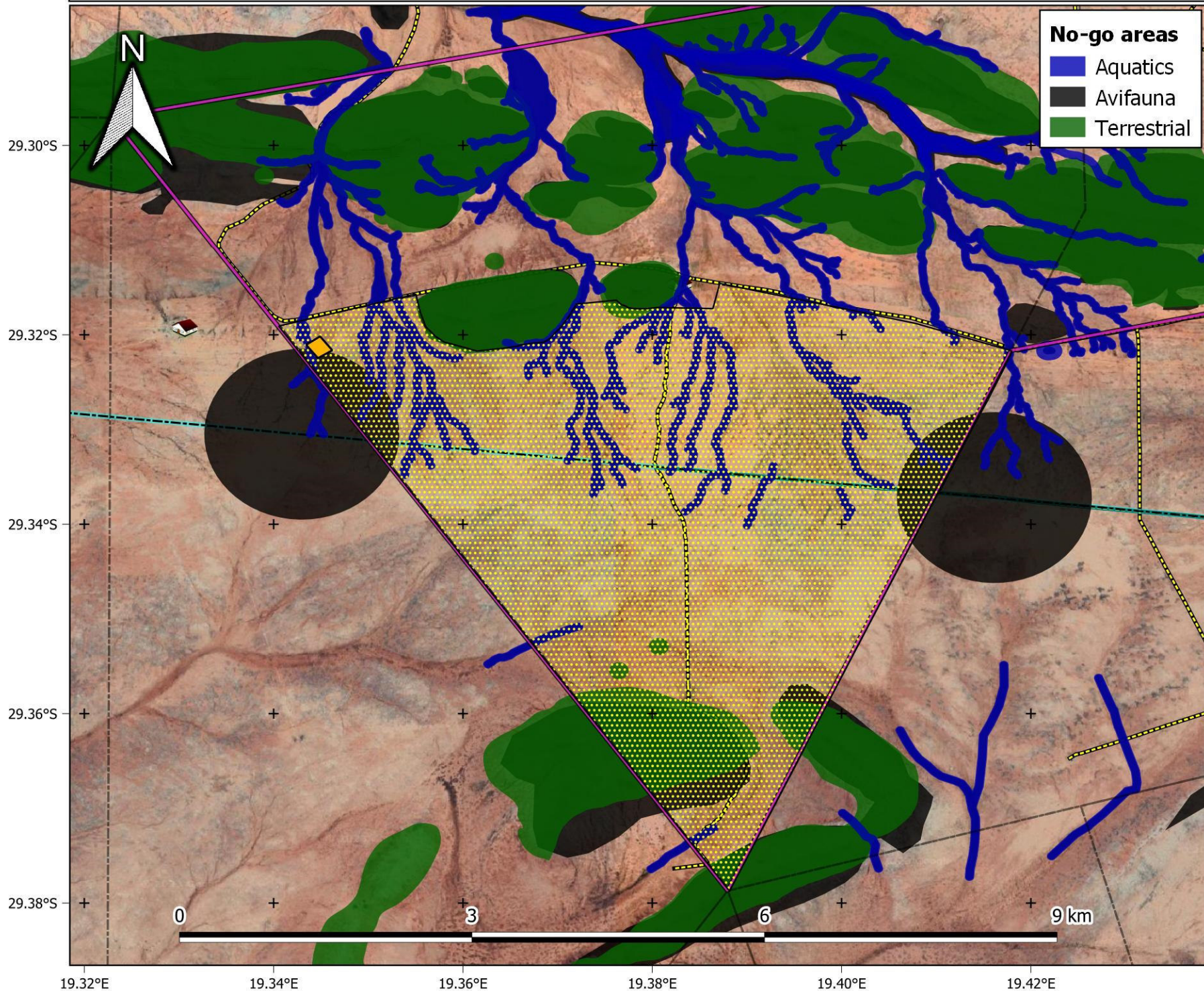
Proposed infrastructure

- Solar PV area (alternative 1)
- BESS
- O&M building
- OSS
- Accommodation
- Temp. laydown

1:12 000



De Rust: Solar PV - No-Go Areas (Alternative Layout)



No-go areas

- Aquatics
- Avifauna
- Terrestrial

Legend

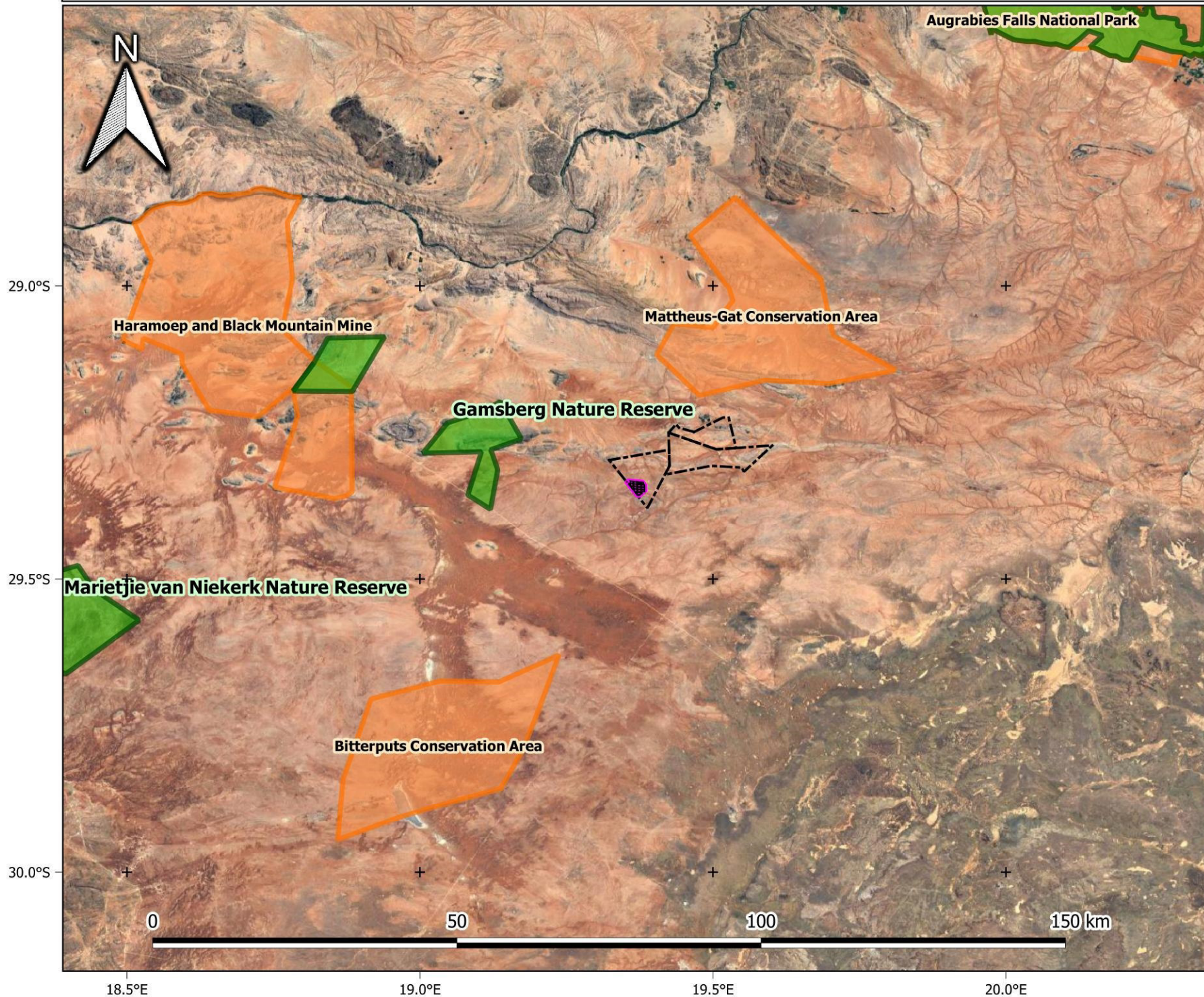
- Farm portion
- Existing infrastructure**
 - Farm houses
 - OH powerlines
 - Roads
- Proposed infrastructure**
 - Solar PV area (alternative 2)
 - OSS

1:40 000

Provincial Context

EnviroINSIGHT
environmental impact assessments

De Rust: Solar PV1 - Protected Areas and Important Bird Areas

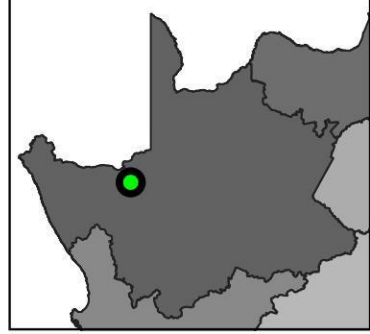


Legend

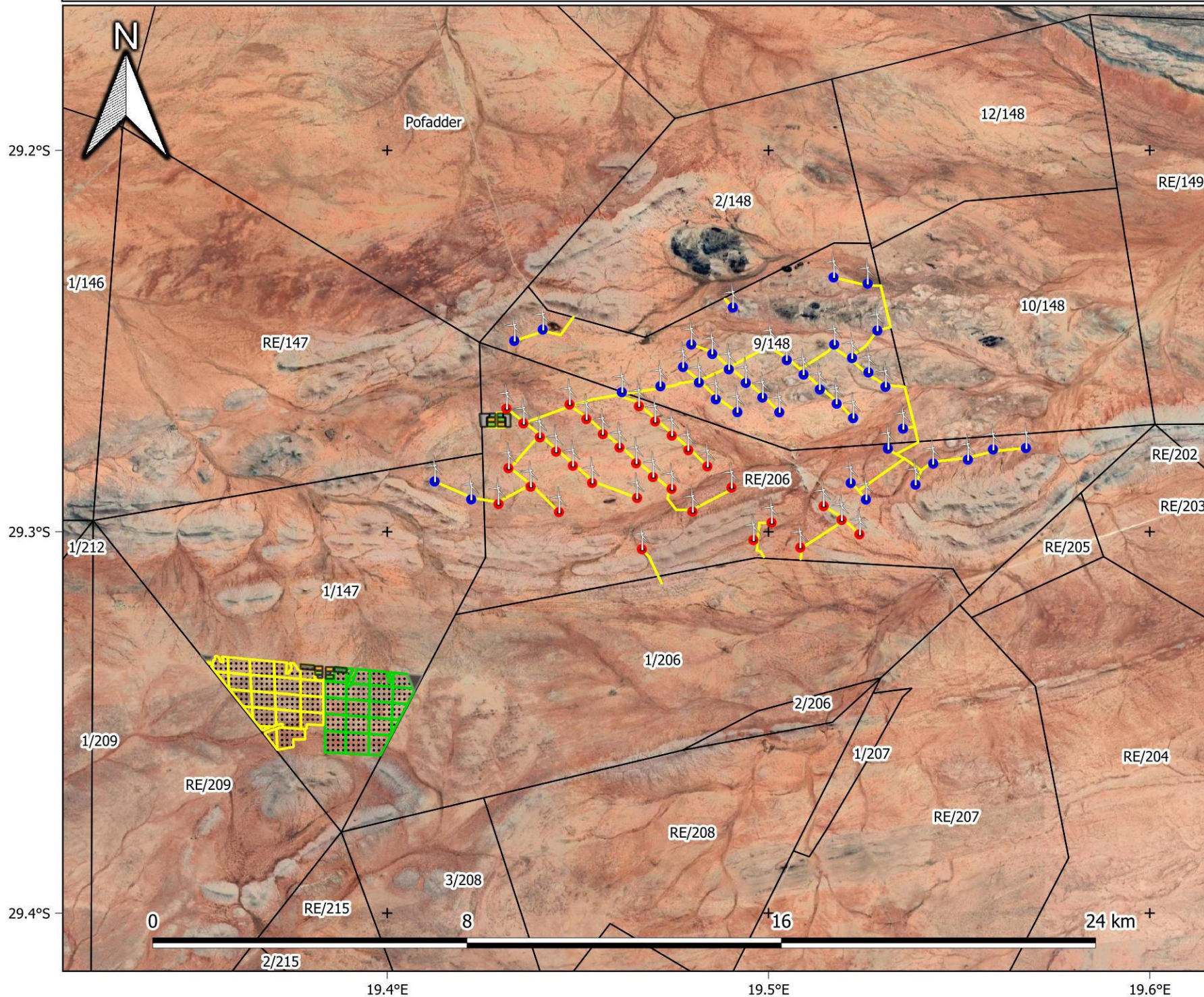
- Farm portions
- IBAs (2015)

1:650 000

Provincial Context



De Rust: Combined Projects and Farm Portions (Alternative 1)



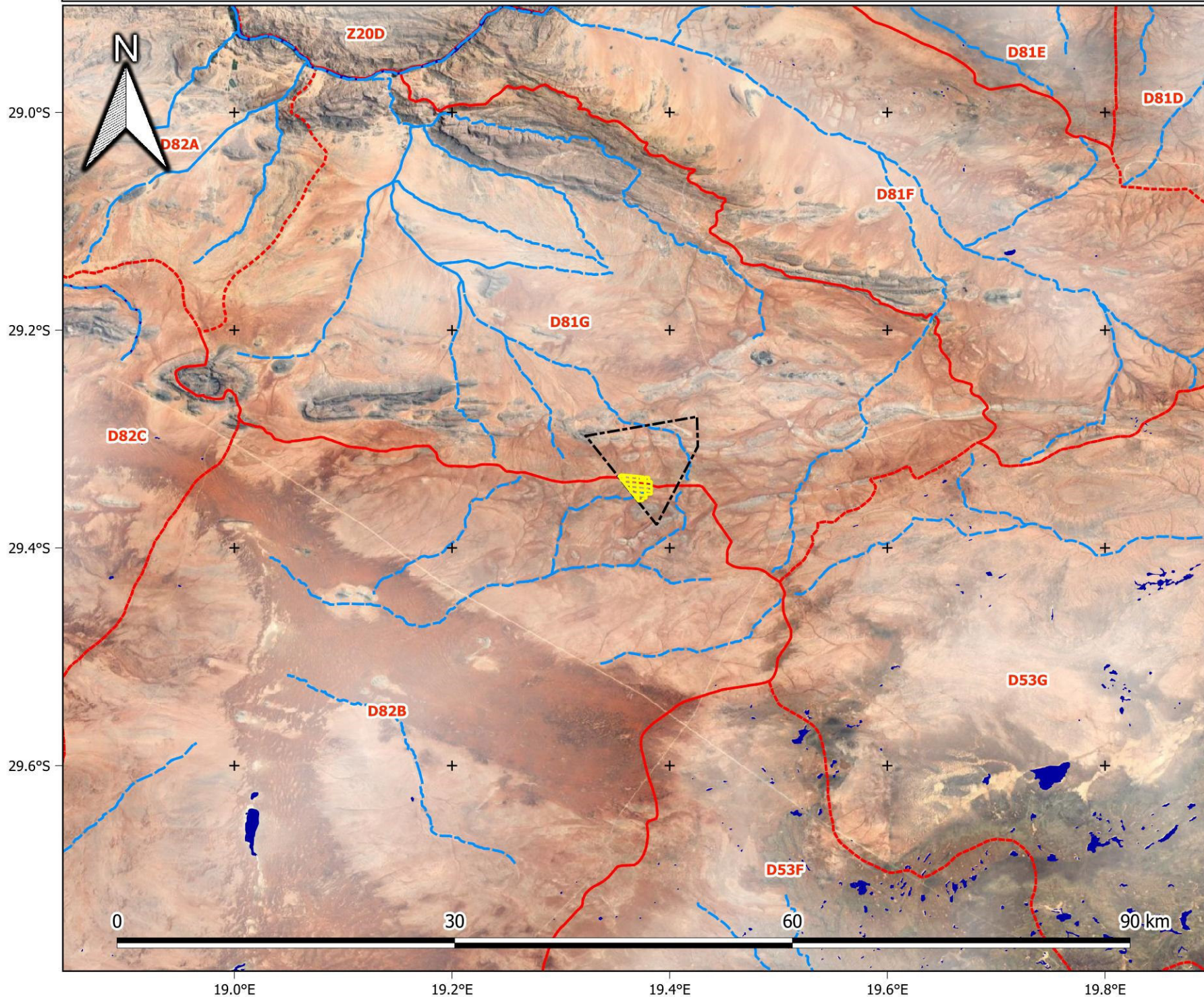
Legend

- North WEF turbines
- South WEF turbines
- Solar PV1
- Solar PV2
- Farm portions
- Accommodation
- Temp. laydown
- Laydown
- BESS
- O&M Building
- OSS 1
- Roads

1:100 000

Provincial Context

De Rust: Solar PV1 - NFEPA and Quaternary Catchments



Legend

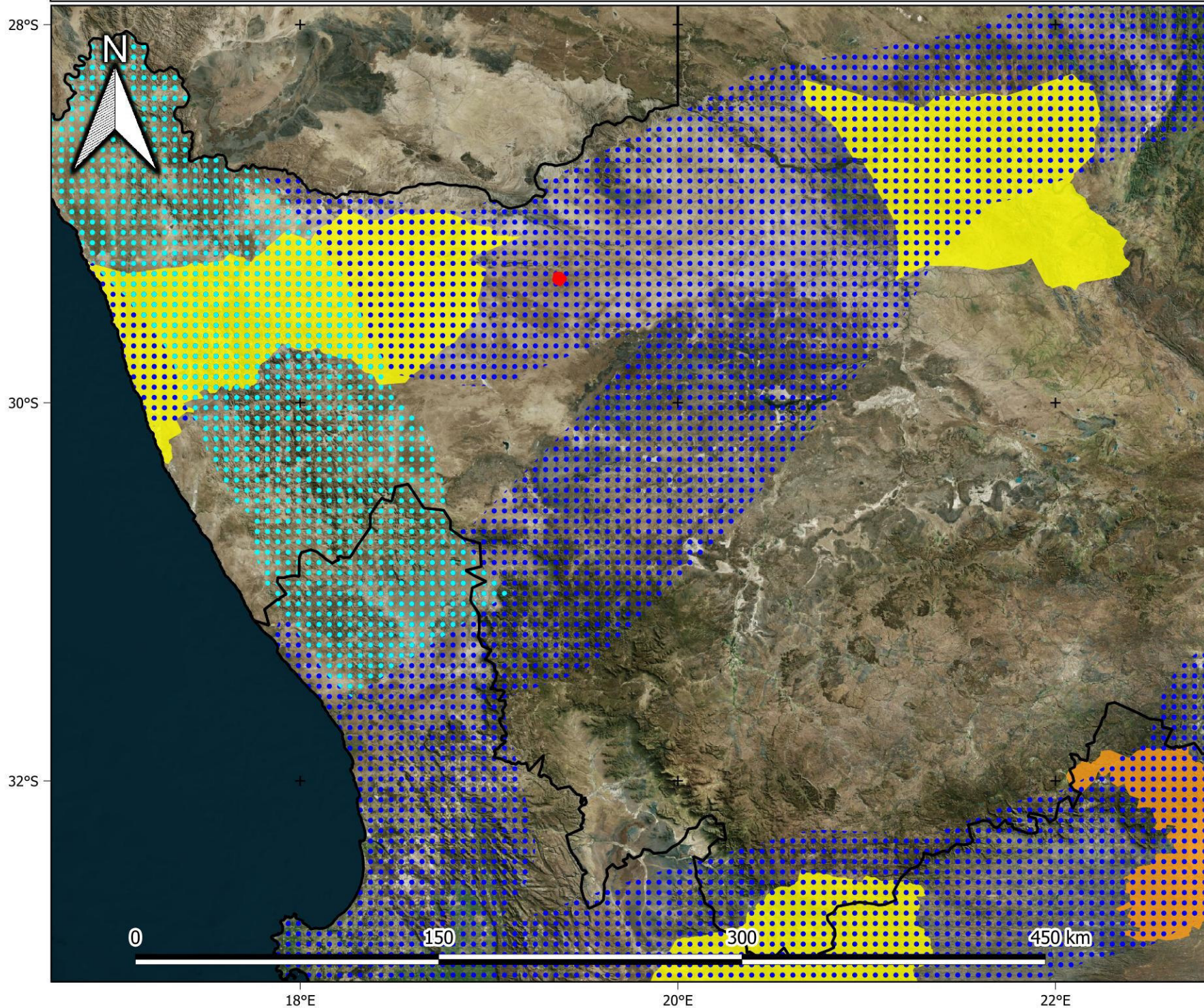
- Solar boundary
- Farm portion
- NFEPA rivers
- NFEPA wetlands
- Quaternary catchments

1:350 000

Provincial Context

A map of South Africa showing the provincial boundaries. A green dot is placed in the Western Cape province to indicate the location of the De Rust project area.

De Rust: Solar PV1 - REDZ and Energy Corridor

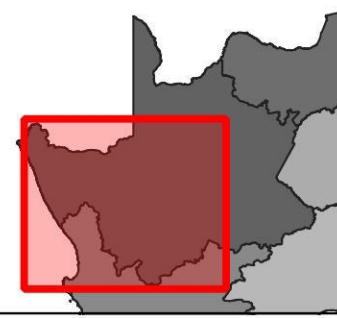


Legend

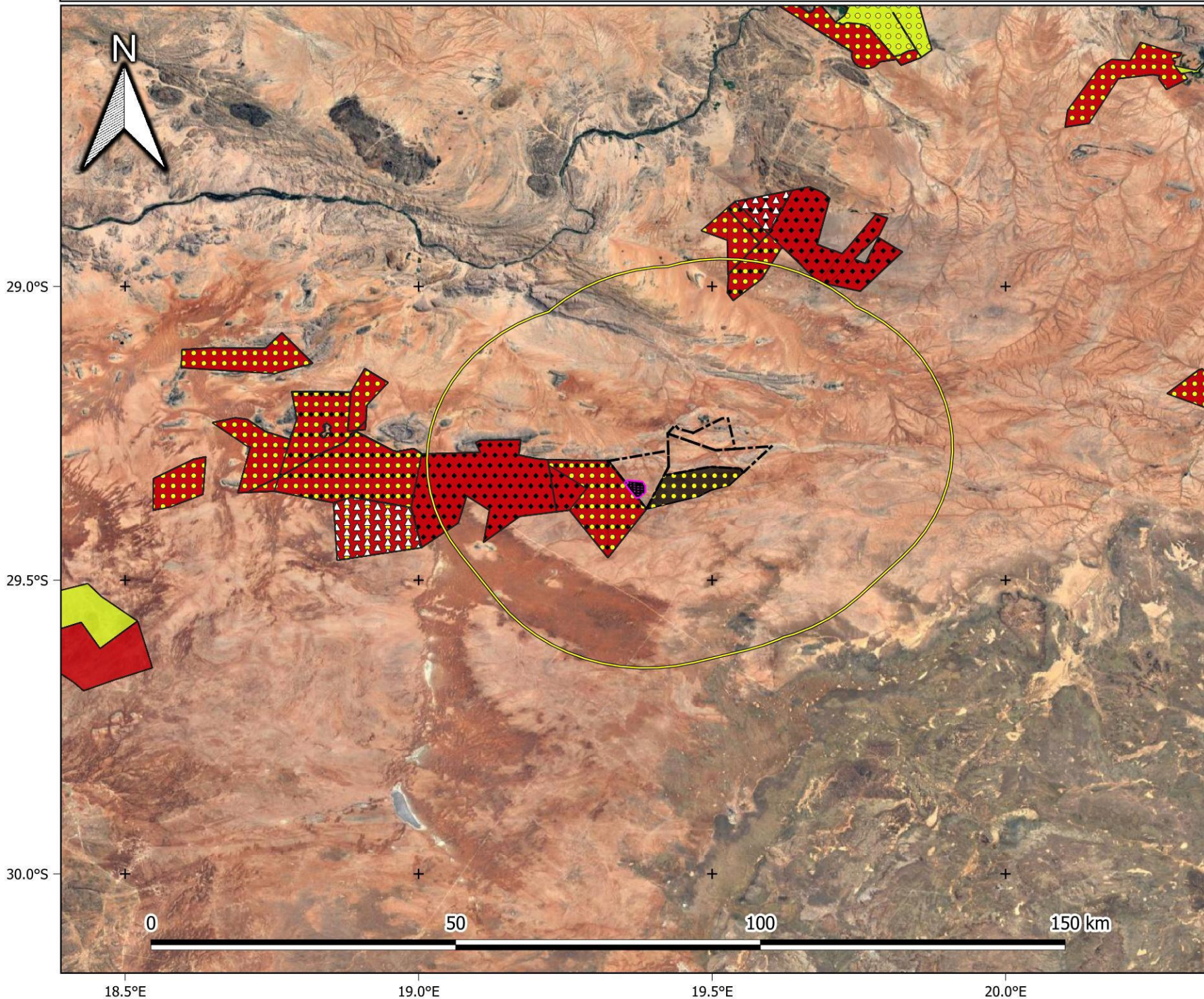
- Solar PV area
- Provinces
- Strategic transmission corridor
- Expanded transmission corridor
- REDZs phase 2
- REDZs phase 1

1:2 000 000

Provincial Context



De Rust: Solar PV1 - Renewable energy developments in proximity



Legend

- Proposed solar area
- Farm portions
- Farm portion 30km buffer

Technology (REEA 2022 Q3)

- CSP
- PV
- Wind

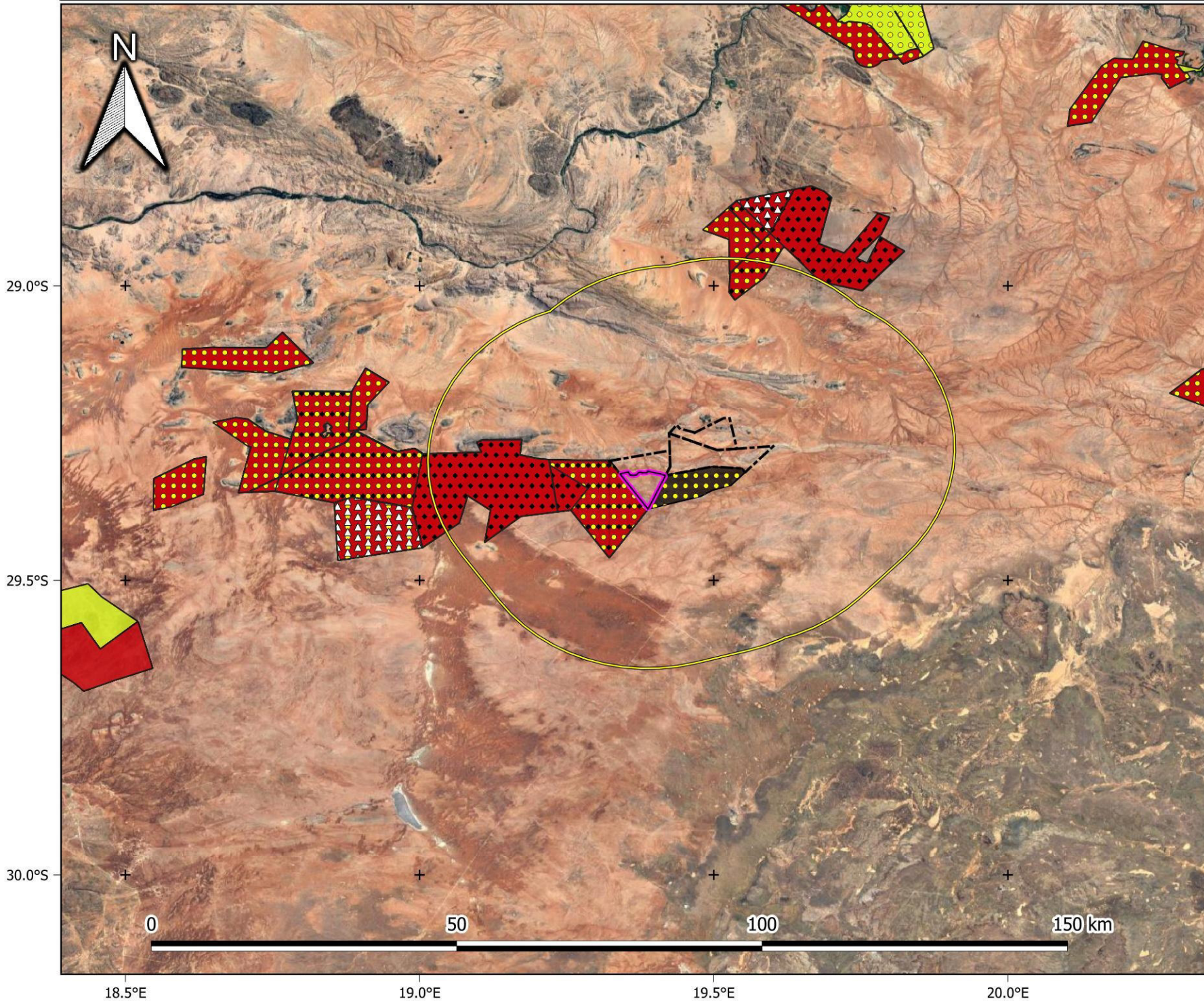
Status (REEA 2022 Q3)

- Approved
- In process
- Houmoed WEF (pre-application)

1:650 000



De Rust: Solar PV - Renewable energy developments in proximity (Alternative)



Legend

- Solar PV Area
- Farm portions
- Farm portion 30km buffer

Technology (REEA 2022 Q3)

- CSP
- PV
- Wind

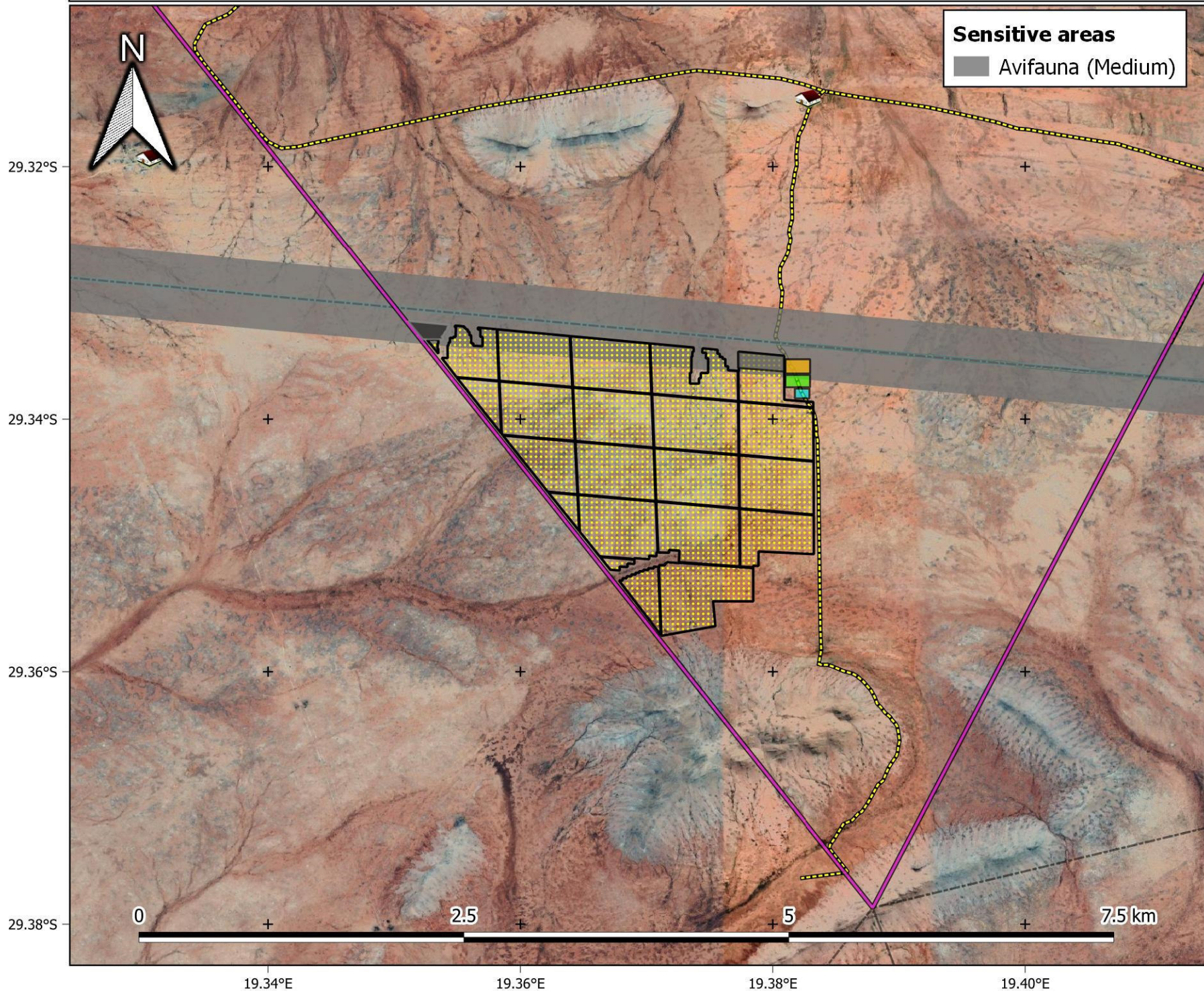
Status (REEA 2022 Q3)

- Approved
- In process
- Houmoed WEF (pre-application)

1:650 000



De Rust: Solar PV1 - Habitat Sensitivity



Sensitive areas
 Avifauna (Medium)

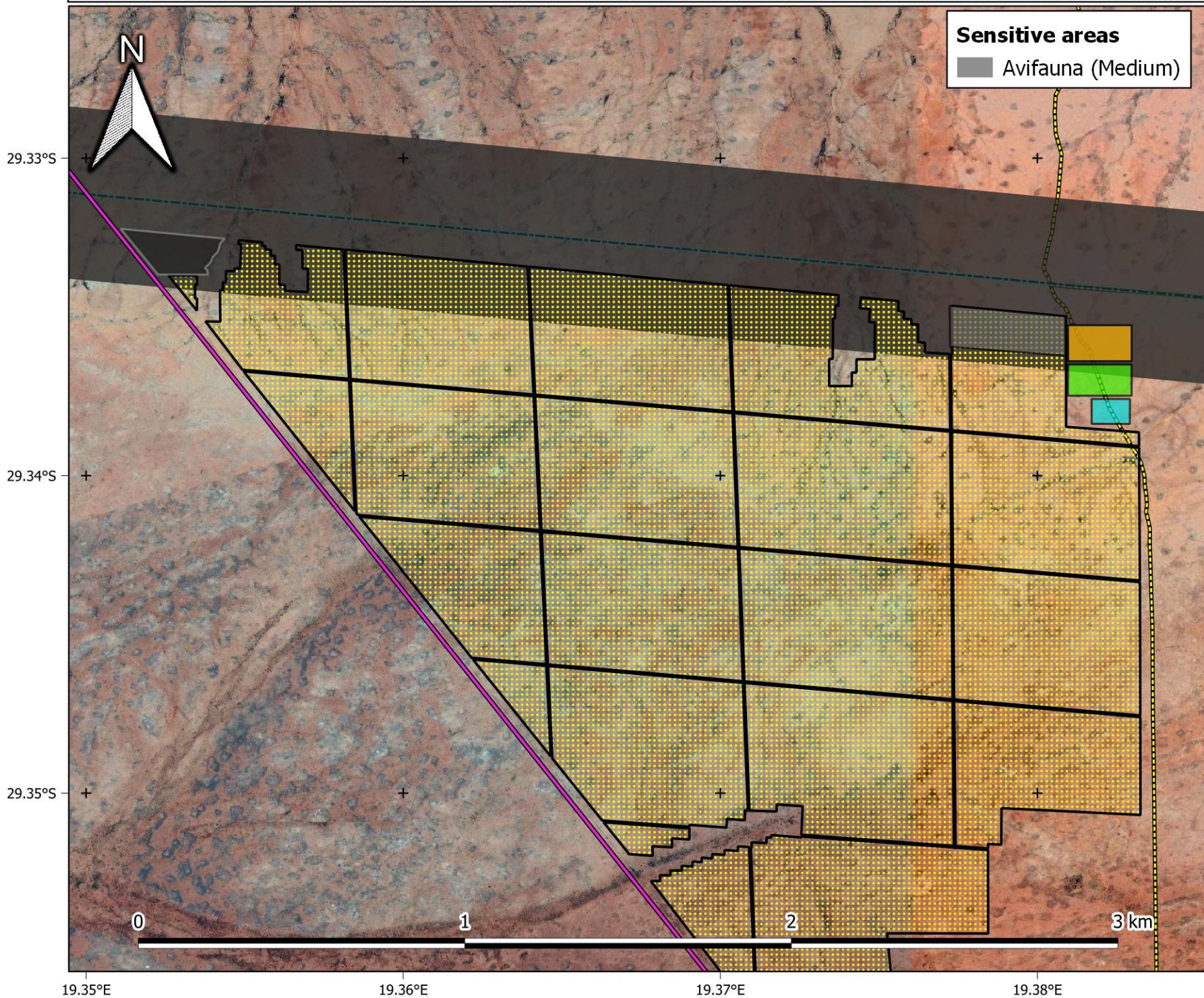
Legend

- Farm portion
- Existing infrastructure**
 - Farm houses
 - OH powerlines
 - Roads
- Proposed infrastructure**
 - Solar PV area (alternative 1)
 - BESS
 - O&M building
 - OSS
 - Accommodation
 - Temp. laydown

1:30 000



De Rust: Solar PV1 - Habitat Sensitivity



Legend

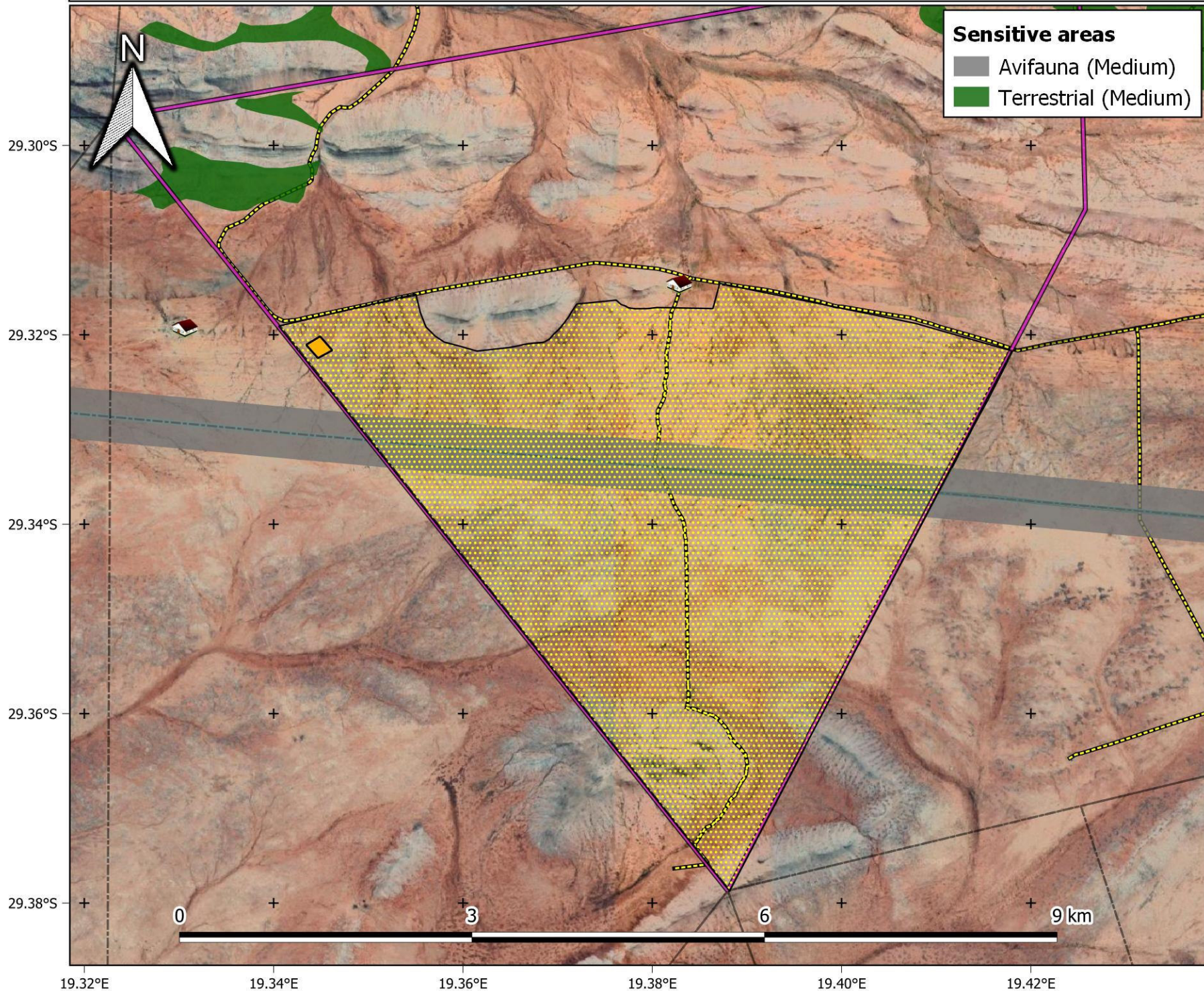
- Farm portion
- Existing infrastructure**
 - Farm houses
 - OH powerlines
 - Roads
- Proposed infrastructure**
 - Solar PV area (alternative 1)
 - BESS
 - O&M building
 - OSS
 - Accommodation
 - Temp. laydown

1:12 000

Provincial Context



De Rust: Solar PV - Habitat Sensitivity (Alternative Layout)

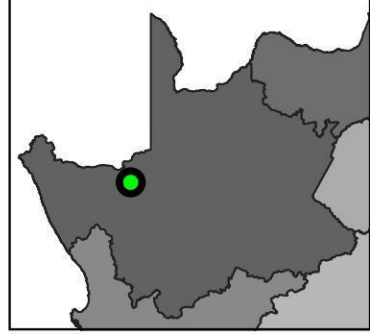


Legend

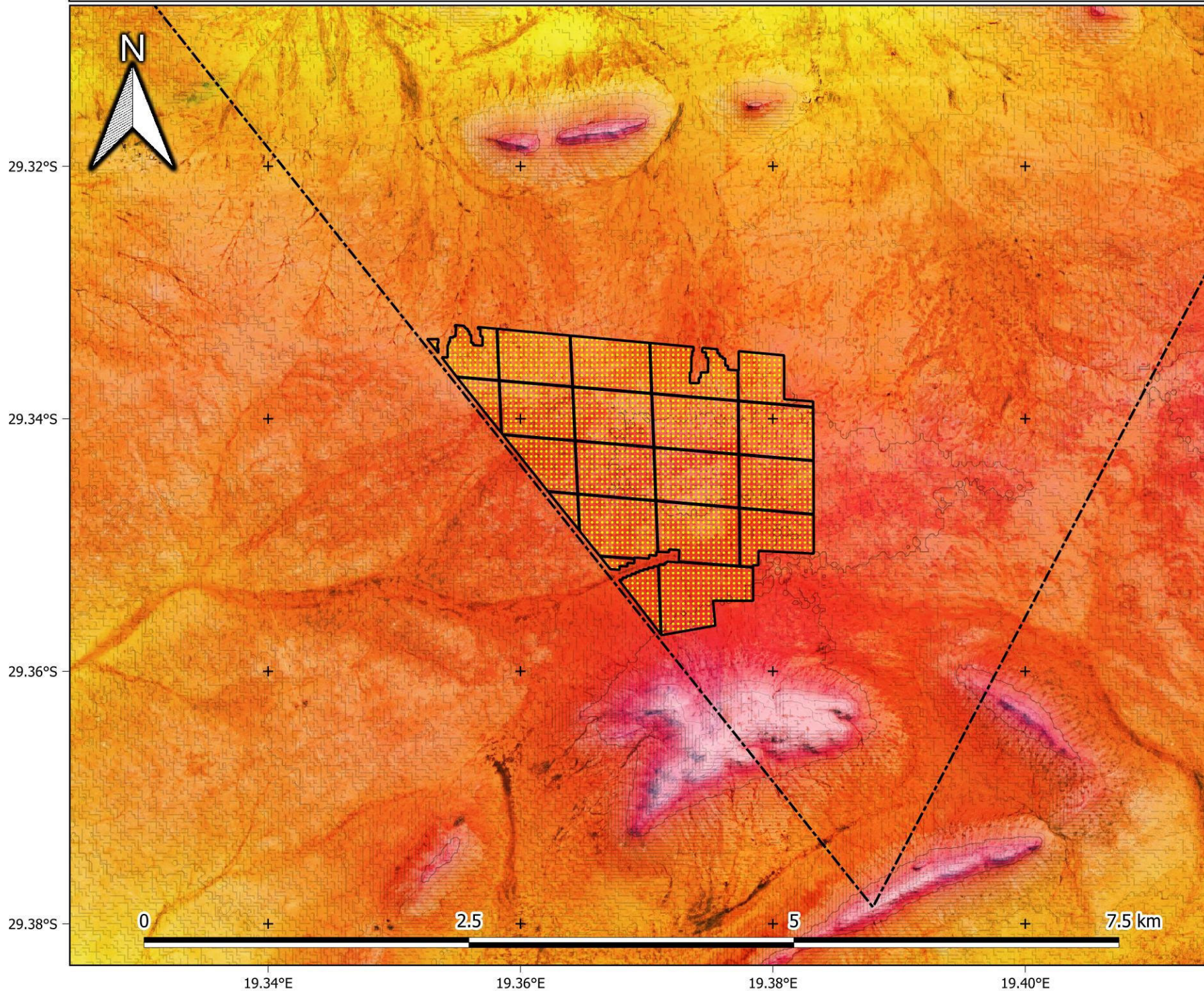
- Farm portion
- Farm portions
- Existing infrastructure**
 - Farm houses
 - OH powerlines
 - Roads
- Proposed infrastructure**
 - Solar PV area (alternative 2)
 - OSS

1:40 000

Provincial Context



De Rust: Solar PV1 - Topography



Legend

- Solar PV area
- Farm portion

Farm portions

Contours

- 10 m
- 50 m

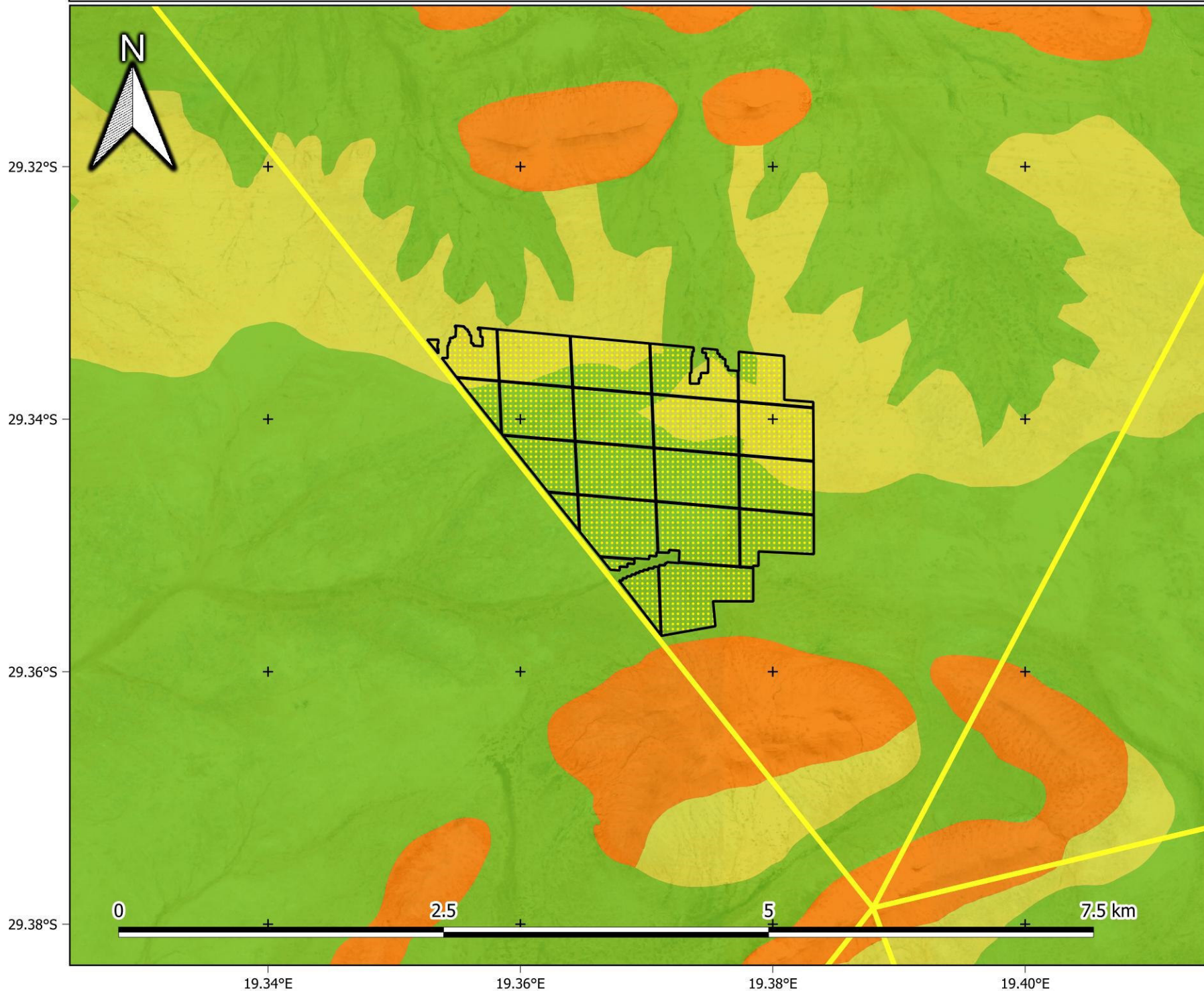
Elevation (masl)

- 950
- 1000
- 1022
- 1046
- 1077
- 1111
- 1130

1:30 000



De Rust: Solar PV1 - Vegetation

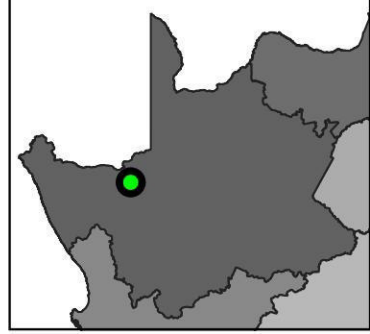


Legend

- Solar PV area
- Farm portions
- VegMap (2018)**
 - Aggeneys Gravel Vygieveld
 - Bushmanland Arid Grassland
 - Bushmanland Inselberg Shrubland

1:30 000

Provincial Context



Appendix A2:

Photographs



De Rust Solar PV1 and PV 2





