

# Appendix A:

## Mapping and Photographs

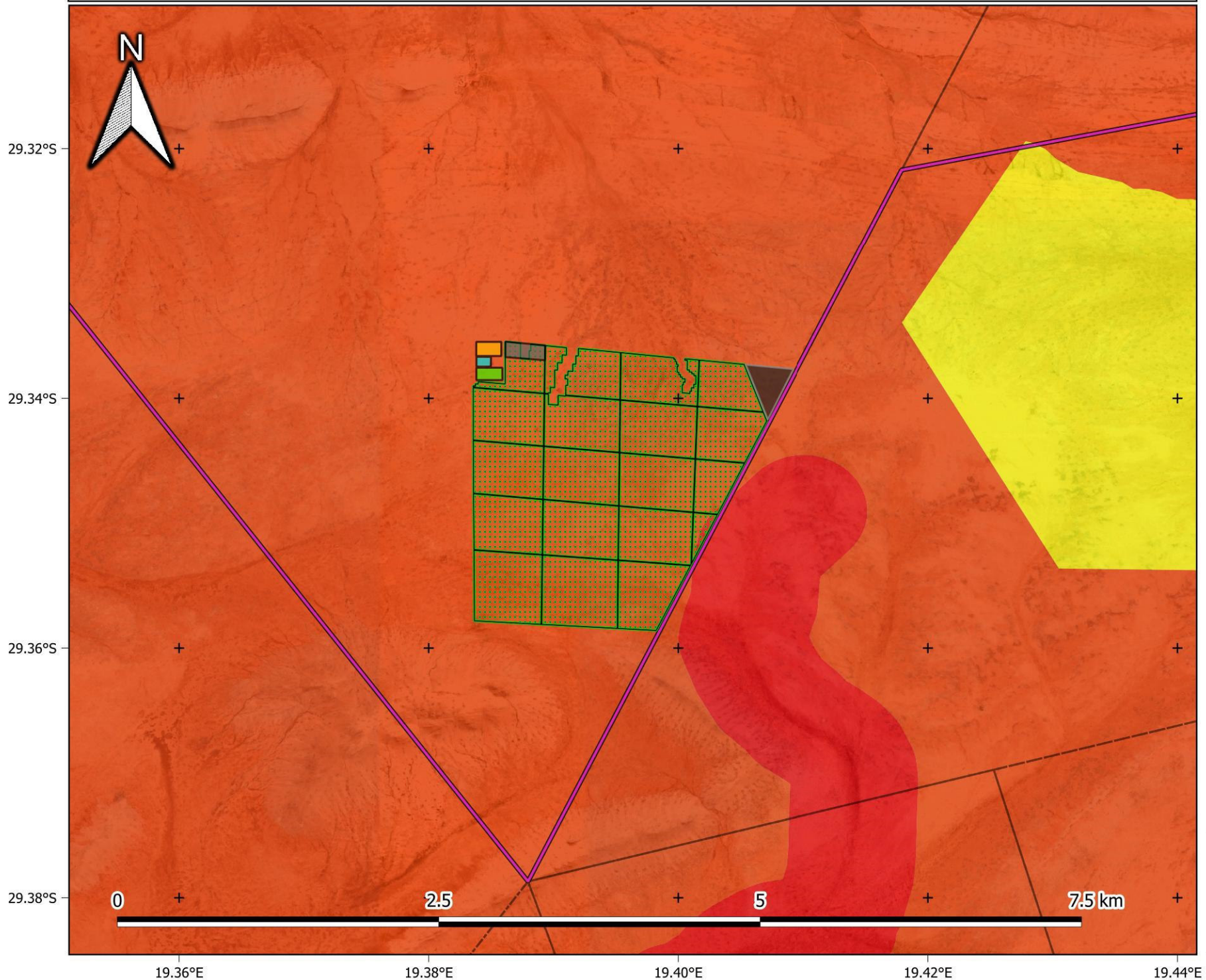


# Appendix A1:

## Mapping



# De Rust: Solar PV2 - Critical Biodiversity Areas



### Legend

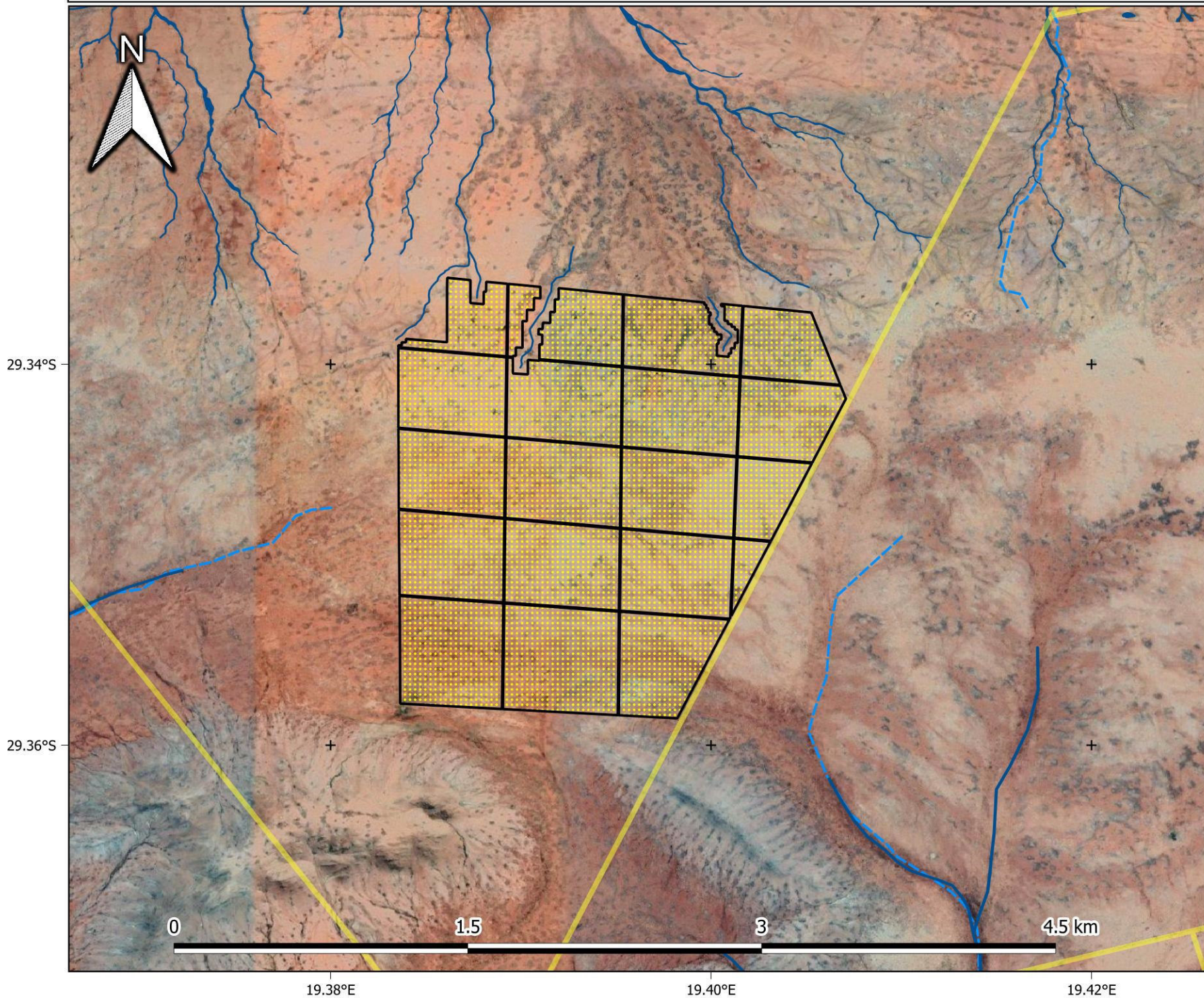
- Farm portion
- Proposed infrastructure**
  - Solar PV area (alternative 1)
  - BESS
  - O&M building
  - OSS
  - Accommodation
  - Temp. laydown
- Critical Biodiversity Areas (NC 2018)**
  - CBA 1
  - CBA 2
  - ESA
  - ONA

1:30 000





# De Rust: Solar PV2 - Hydrology



## Legend

Solar PV area

Farm portions

### Aquatic ecologist's delineations

Watercourses

### NFEPA (2012)

Rivers

Wetlands

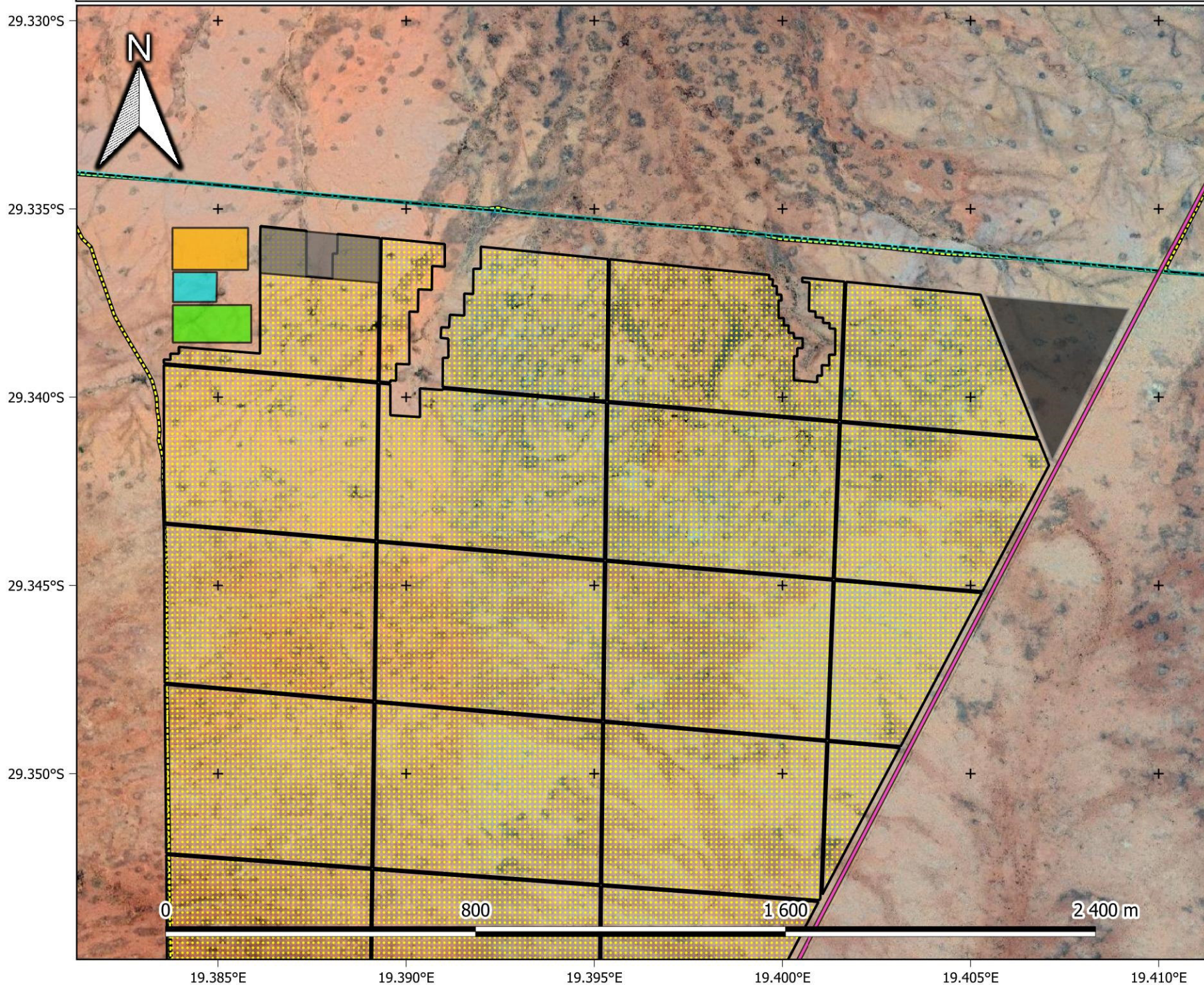
1:20 000

## Provincial Context





# De Rust: Solar PV2 - Layout



### Legend

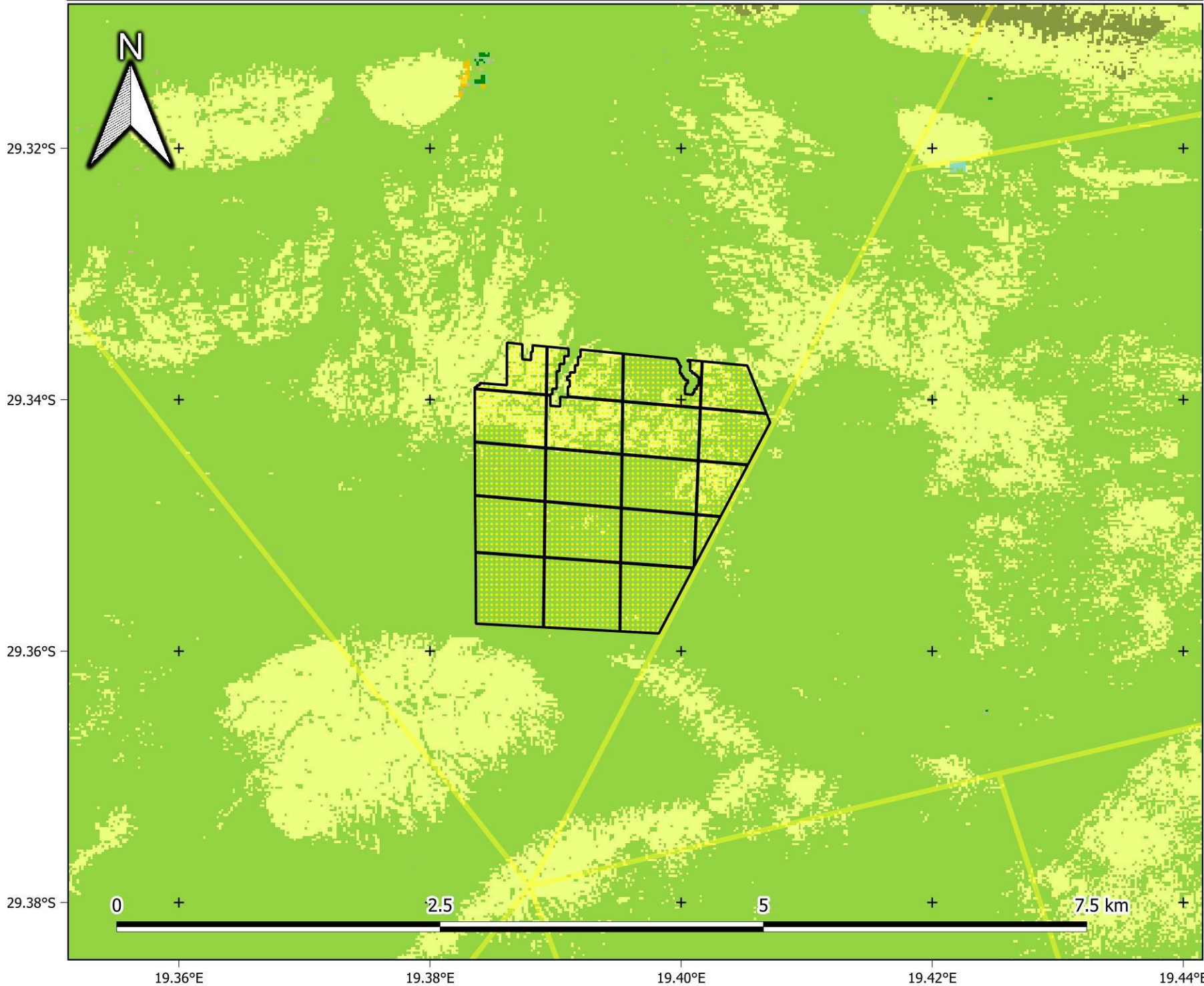
- Farm portion
- Parent farms
- Existing infrastructure**
  - Farm houses
  - OH powerlines
  - Roads
- Proposed infrastructure**
  - Solar PV area (alternative 1)
  - BESS
  - O&M building
  - OSS
  - Accommodation
  - Temp. laydown

1:10 000





# De Rust: Solar PV2 - Land Cover



## Legend

Solar PV area

Farm portions

### National Land Cover (SA NLC 2018)

Low Shrubland (other regions)

Low Shrubland (Succulent Karoo)

Low Shrubland (Nama Karoo)

Dry Pans

Bare Riverbed Material

Bare Ground

Roads and Rail

Mines

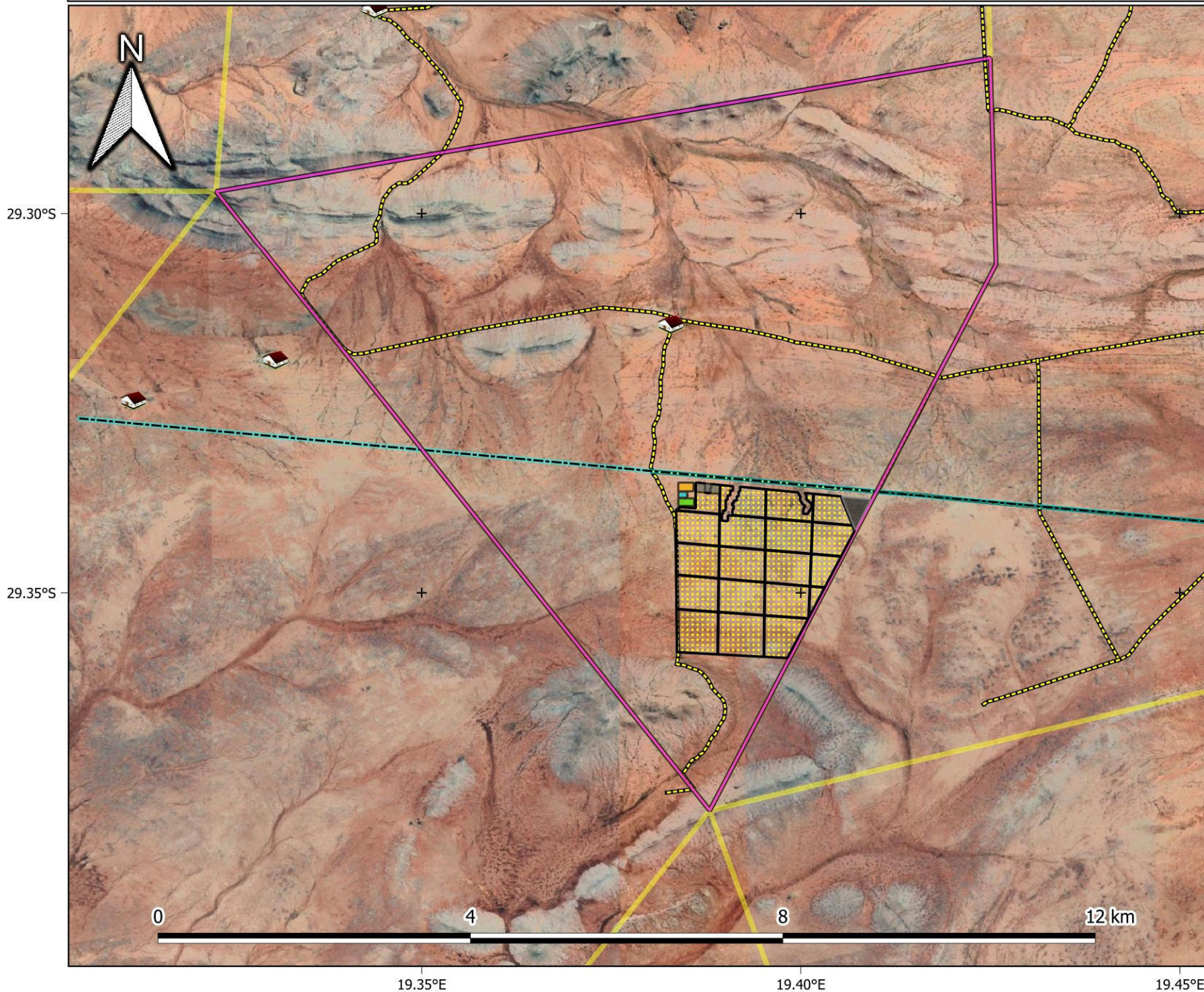
1:30 000

## Provincial Context





# De Rust: Solar PV2 - Layout



**Legend**

- Farm portion
- Parent farms

**Existing infrastructure**

- Farm houses
- OH powerlines
- Roads

**Proposed infrastructure**

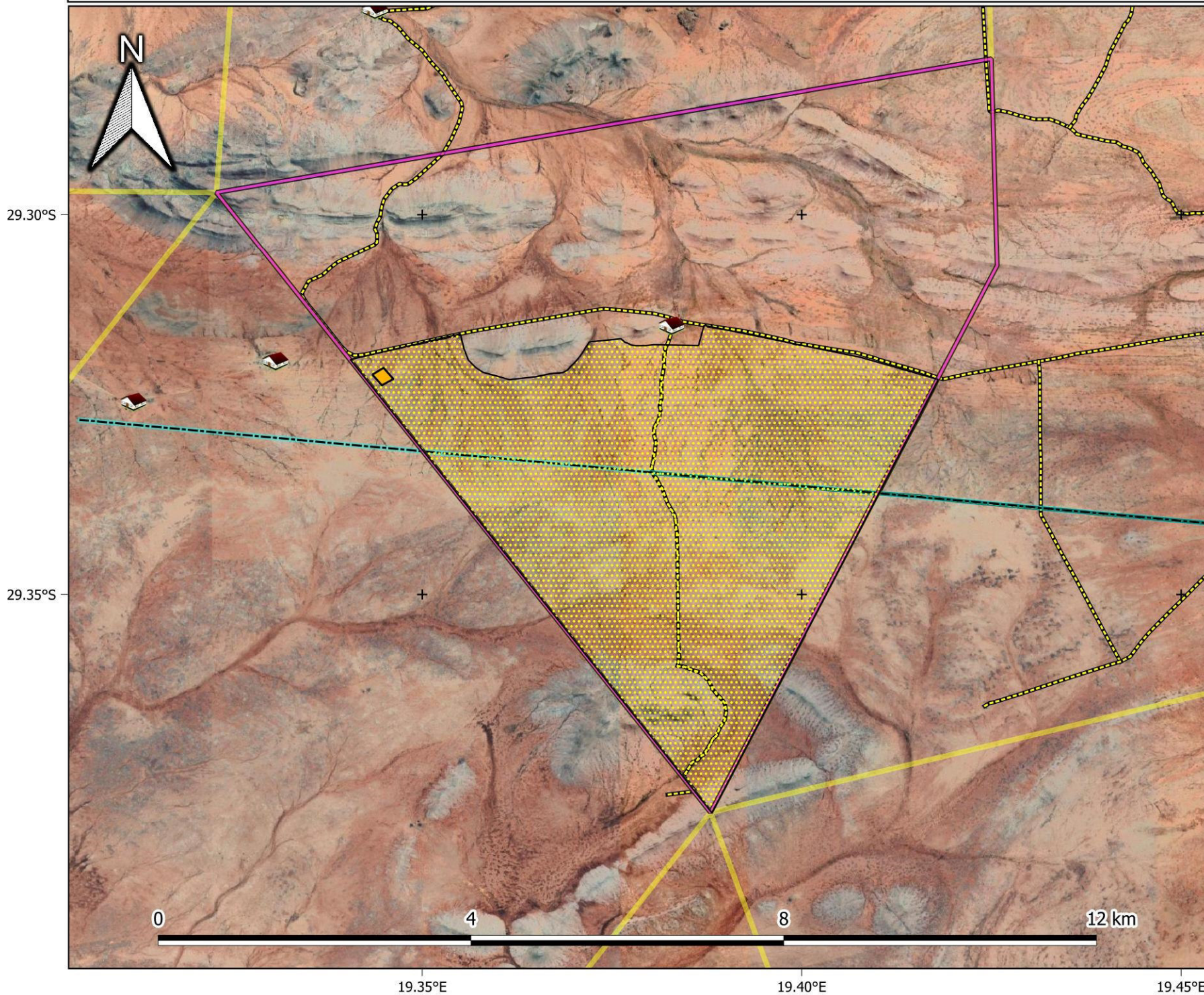
- Solar PV area (alternative 1)
- BESS
- O&M building
- OSS
- Accommodation
- Temp. laydown

1:50 000





# De Rust: Solar PV - Layout (Alternative 2)

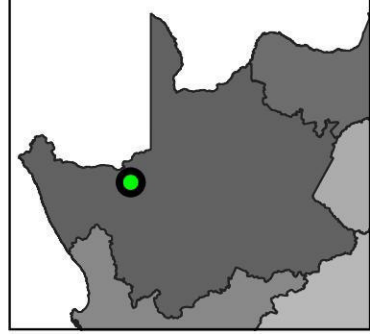


## Legend

- Farm portion
- Parent farms
- Existing infrastructure**
  - Farm houses
  - OH powerlines
  - Roads
- Proposed infrastructure**
  - Solar PV area (alternative 2)
  - OSS

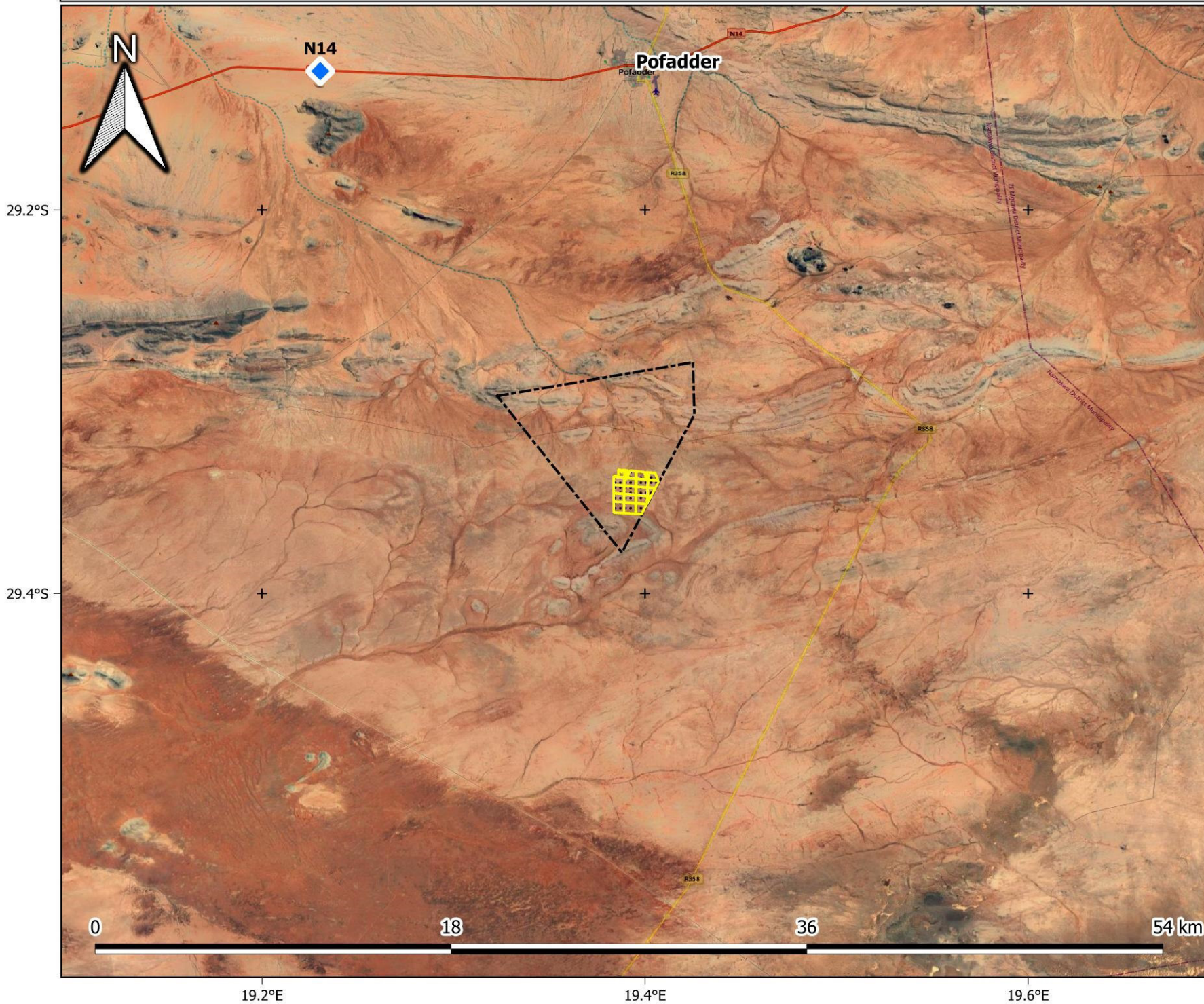
1:50 000

## Provincial Context







# De Rust: Solar PV2 - Aerial



## Legend

-  Solar PV2 area
-  Farm portion

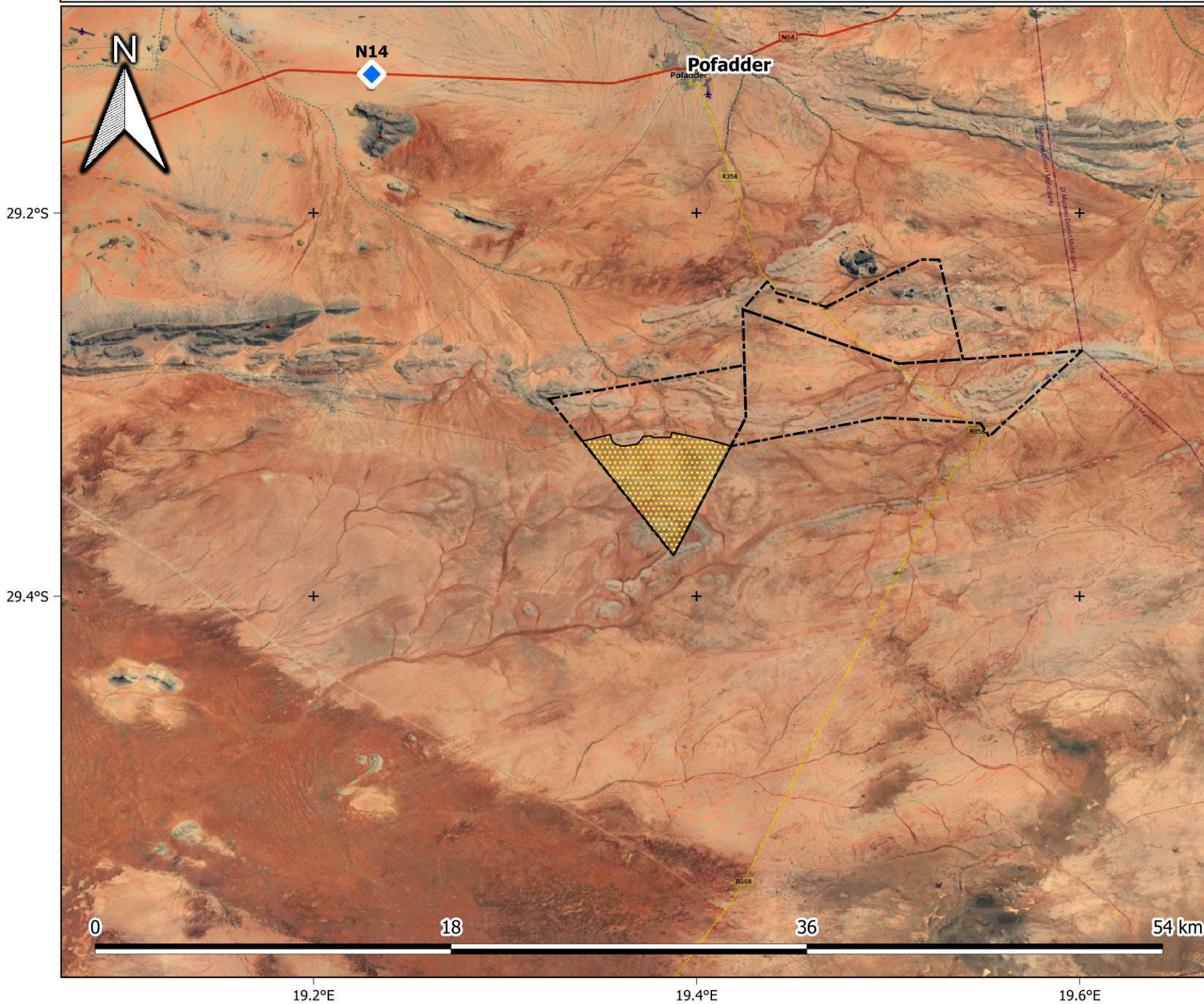
1:200 000

## Provincial Context







# De Rust: Solar PV - Alternative Aerial (Location)



## Legend

-  Solar PV area
-  Farm portion

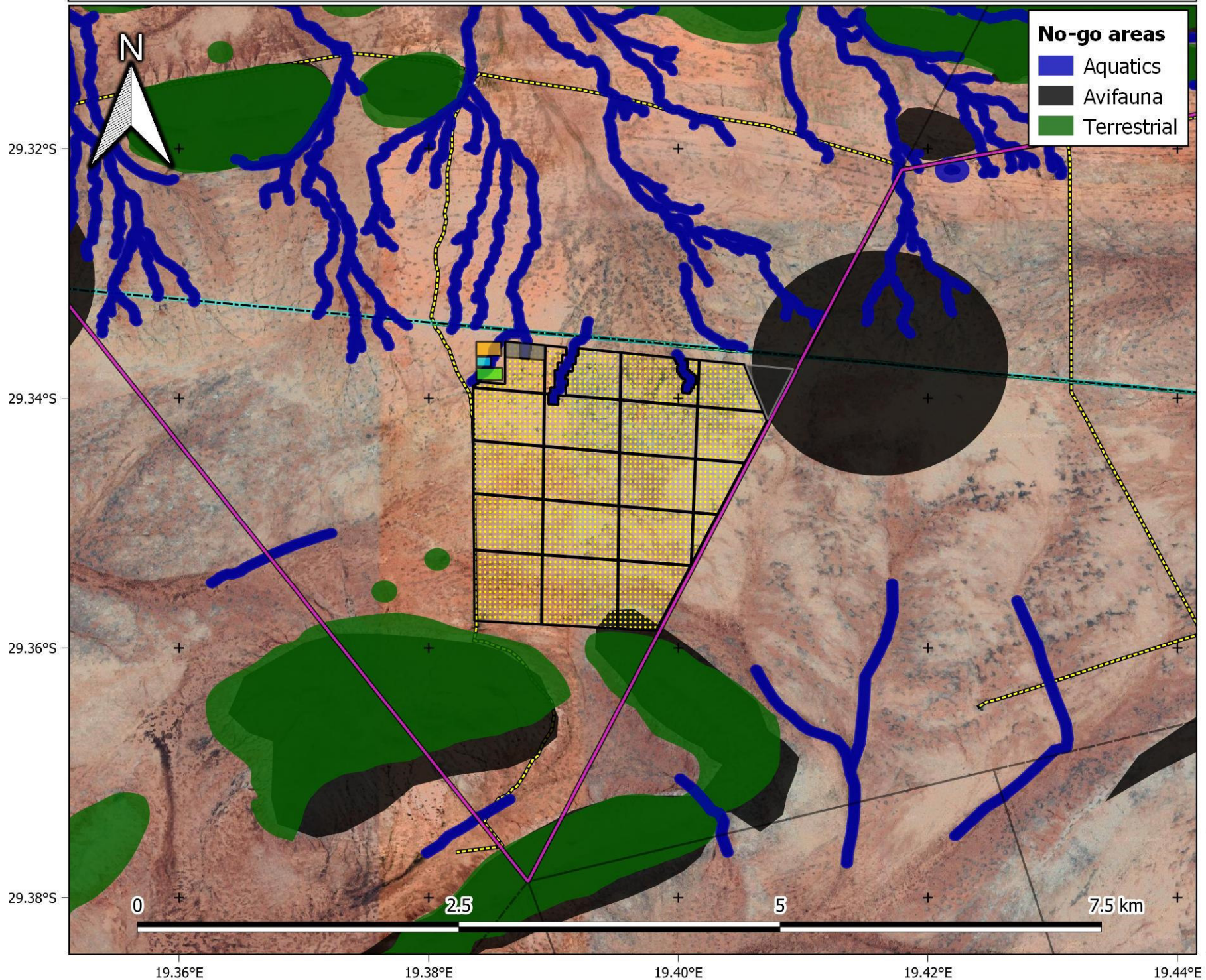
1:200 000

## Provincial Context





# De Rust: Solar PV2 - No-Go Areas



**No-go areas**

- Aquatics
- Avifauna
- Terrestrial

**Legend**

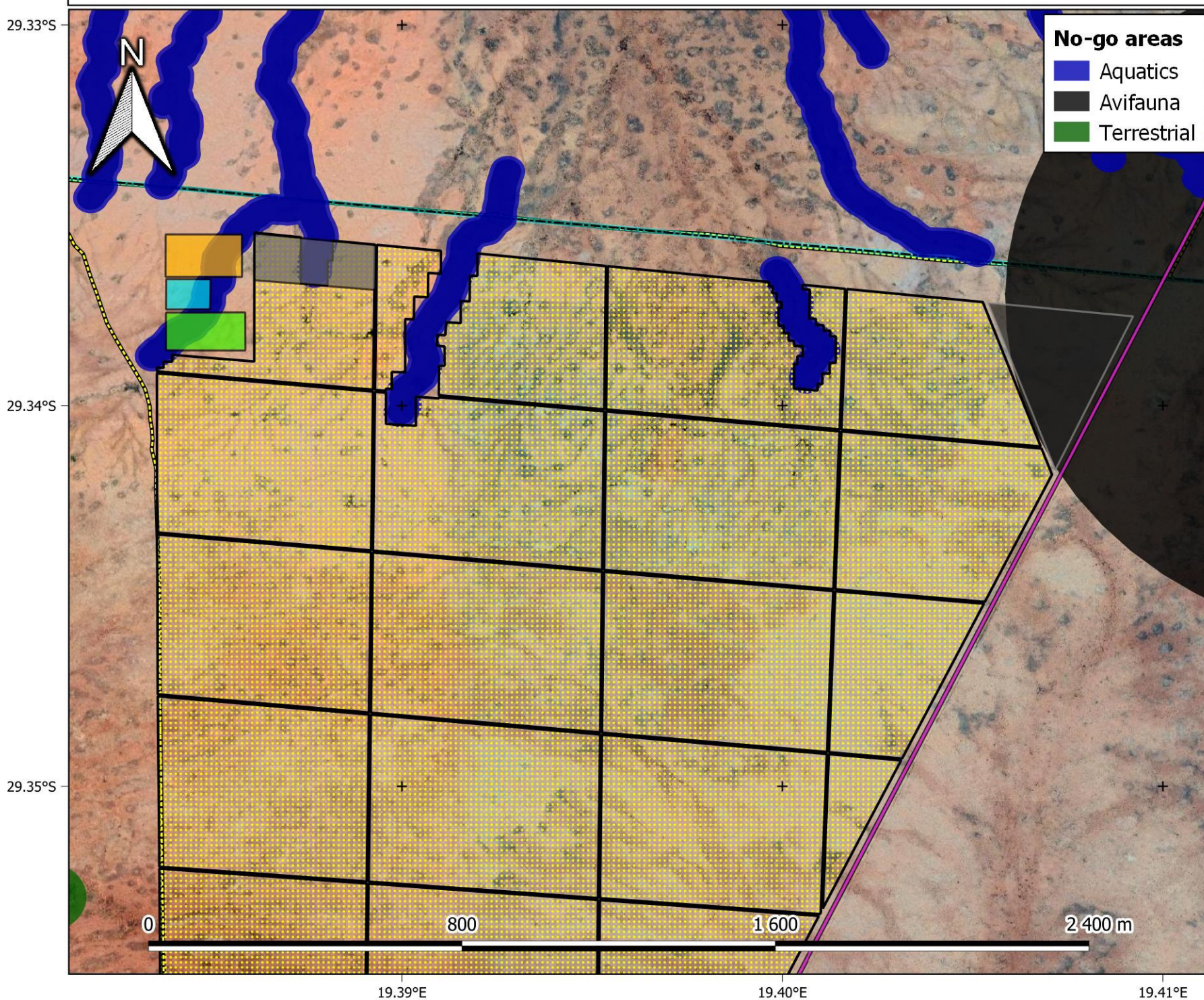
- Farm portion
- Existing infrastructure**
  - Farm houses
  - OH powerlines
  - Roads
- Proposed infrastructure**
  - Solar PV area (alternative 1)
  - BESS
  - O&M building
  - OSS
  - Accommodation
  - Temp. laydown

1:30 000





# De Rust: Solar PV2 - No-Go Areas



**No-go areas**

- Aquatics
- Avifauna
- Terrestrial

**Legend**

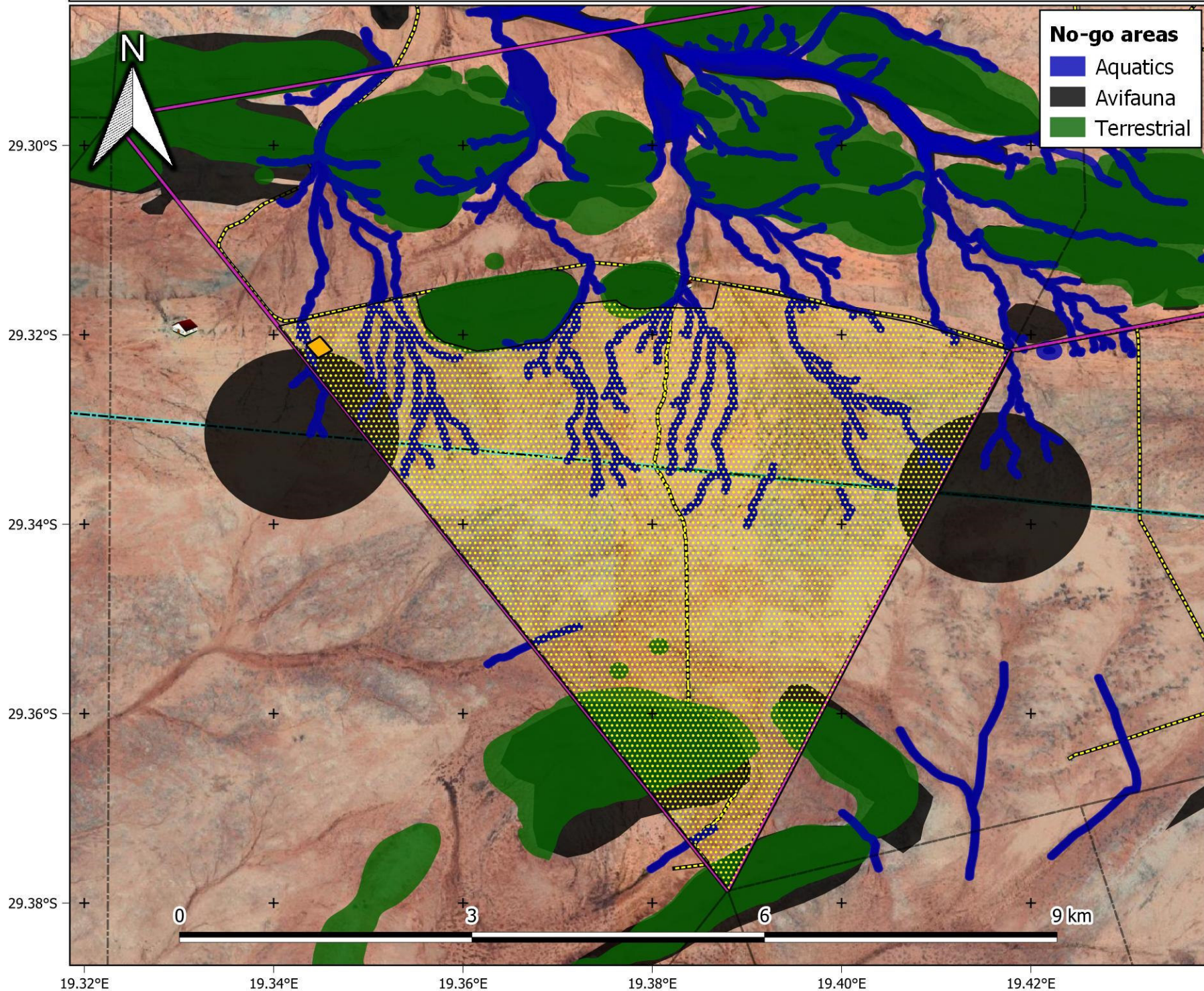
- Farm portion
- Existing infrastructure**
  - Farm houses
  - OH powerlines
  - Roads
- Proposed infrastructure**
  - Solar PV area (alternative 1)
  - BESS
  - O&M building
  - OSS
  - Accommodation
  - Temp. laydown

1:10 000





# De Rust: Solar PV - No-Go Areas (Alternative Layout)



**No-go areas**

- Aquatics
- Avifauna
- Terrestrial

**Legend**

Farm portion

**Existing infrastructure**

- Farm houses
- OH powerlines
- Roads

**Proposed infrastructure**

- Solar PV area (alternative 2)
- OSS

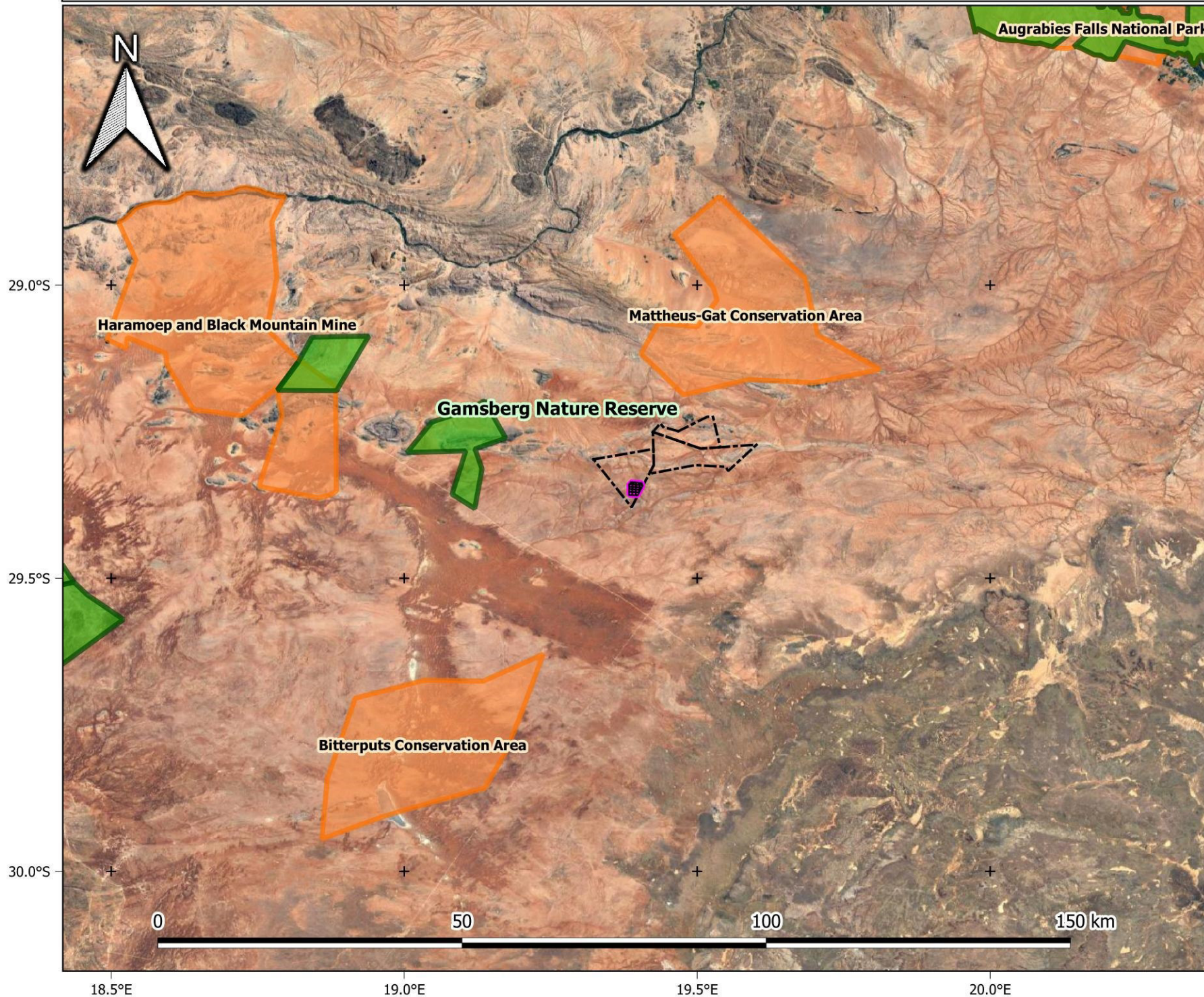
1:40 000

**Provincial Context**

**EnviroINSIGHT**  
environmental impact assessments



# De Rust: Solar PV2 - Protected Areas and Important Bird Areas

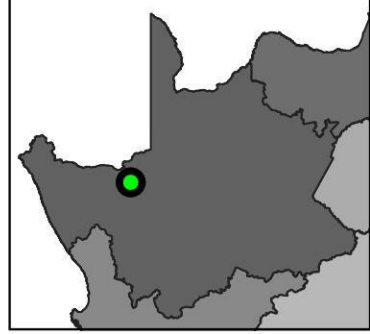


## Legend

- Farm portions
- IBAs (2015)

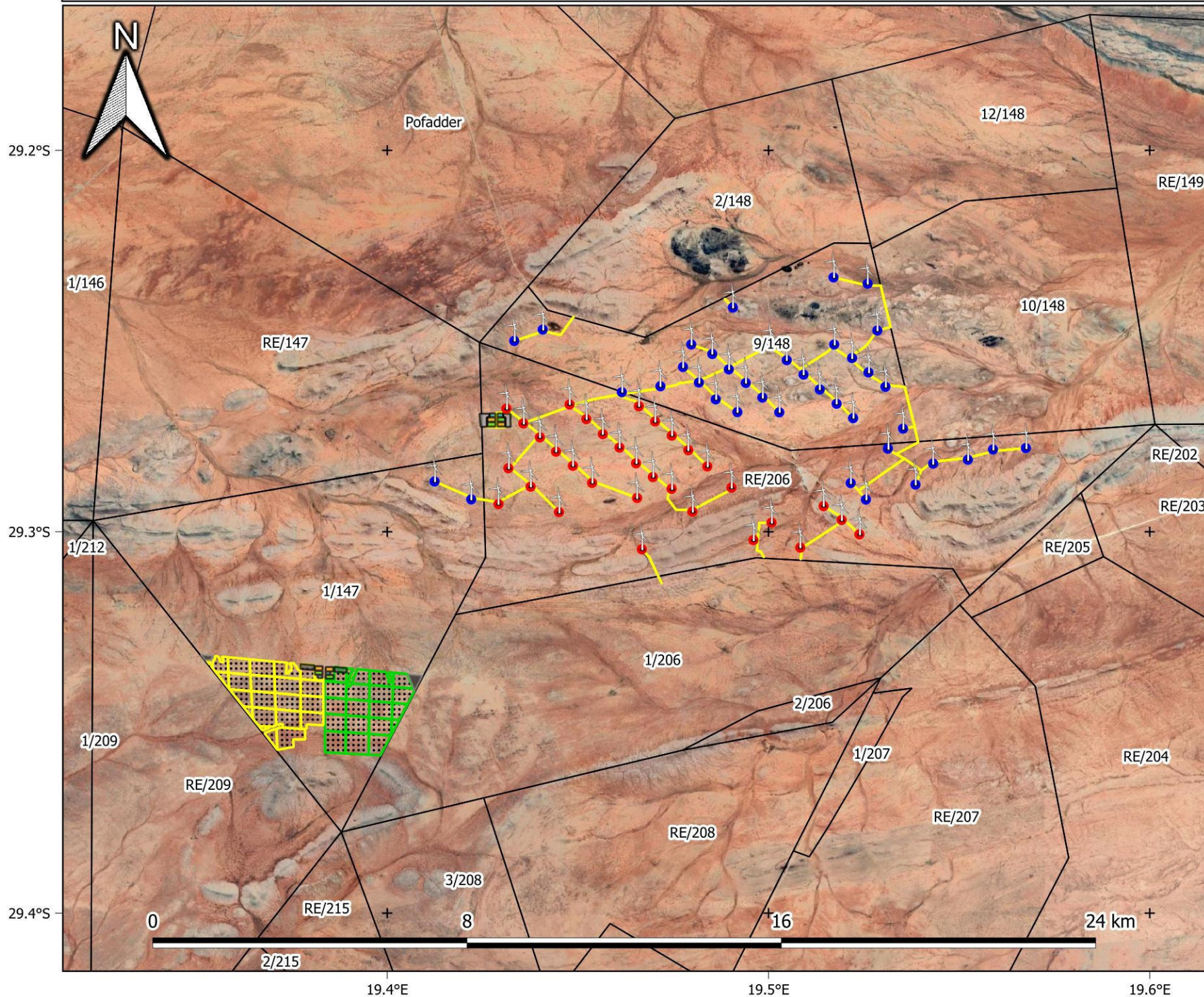
1:650 000

## Provincial Context





# De Rust: Combined Projects and Farm Portions (Alternative 1)



### Legend

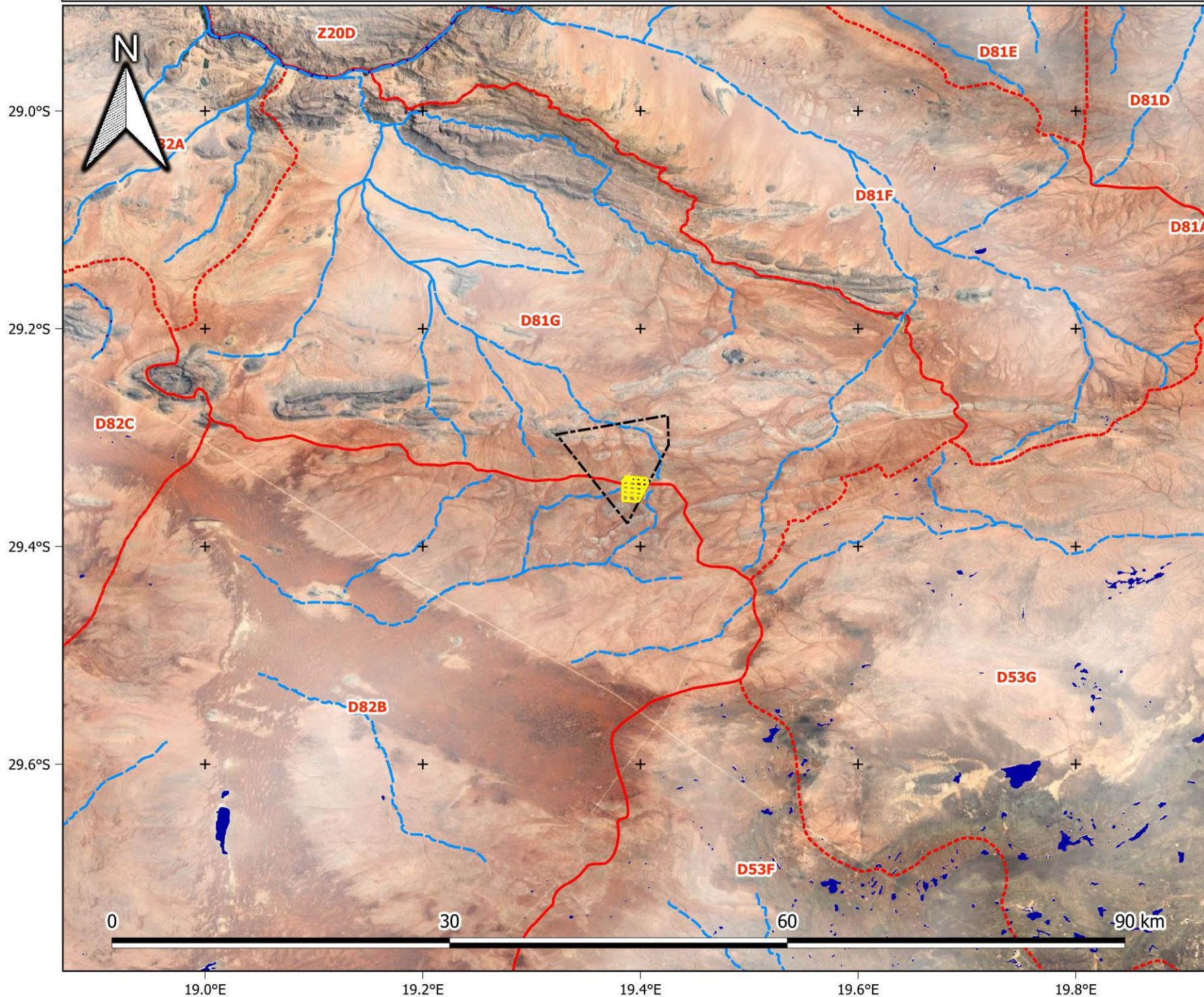
- North WEF turbines
- South WEF turbines
- Solar PV1
- Solar PV2
- Farm portions
- Accommodation
- Temp. laydown
- Laydown
- BESS
- O&M Building
- OSS 1
- Roads

1:100 000

### Provincial Context



# De Rust: Solar PV2 - NFEPA and Quaternary Catchments

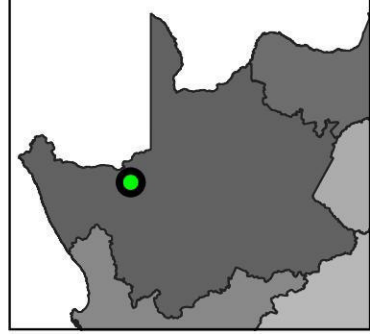


## Legend

- Solar boundary
- Farm portion
- NFEPA rivers
- NFEPA wetlands
- Quaternary catchments

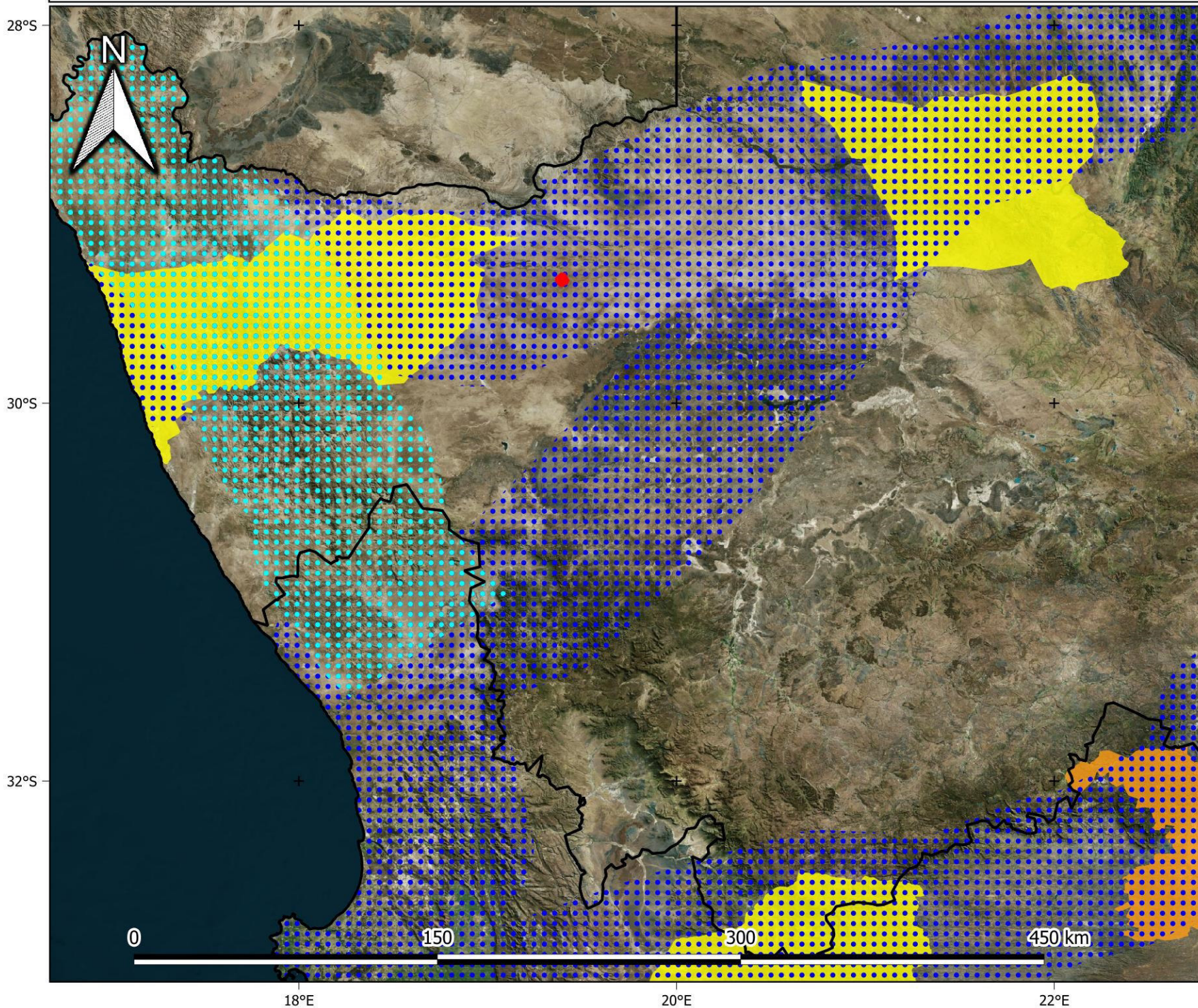
1:350 000

## Provincial Context





# De Rust: Solar PV2 - REDZ and Energy Corridor

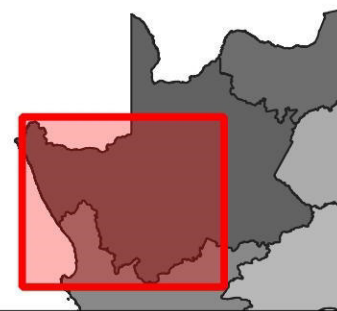


## Legend

- Solar PV area
- Provinces
- Strategic transmission corridor
- Expanded transmission corridor
- REDZs phase 2
- REDZs phase 1

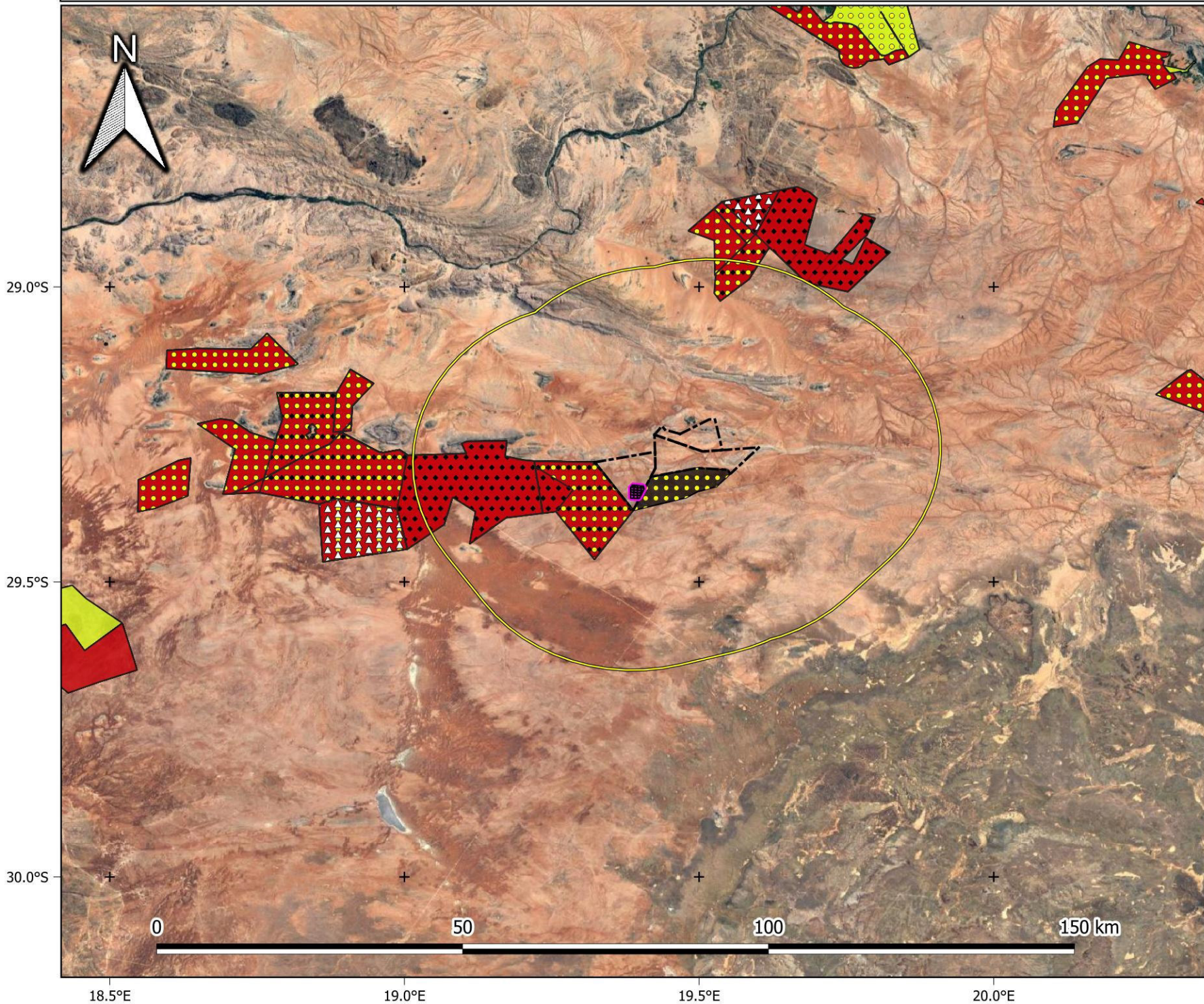
1:2 000 000

## Provincial Context





# De Rust: Solar PV2 - Renewable energy developments in proximity



## Legend

- Proposed solar area
- Farm portions
- Farm portion 30km buffer

## Technology (REEA 2022 Q3)

- CSP
- PV
- Wind

## Status (REEA 2022 Q3)

- Approved
- In process
- Houmoed WEF (pre-application)

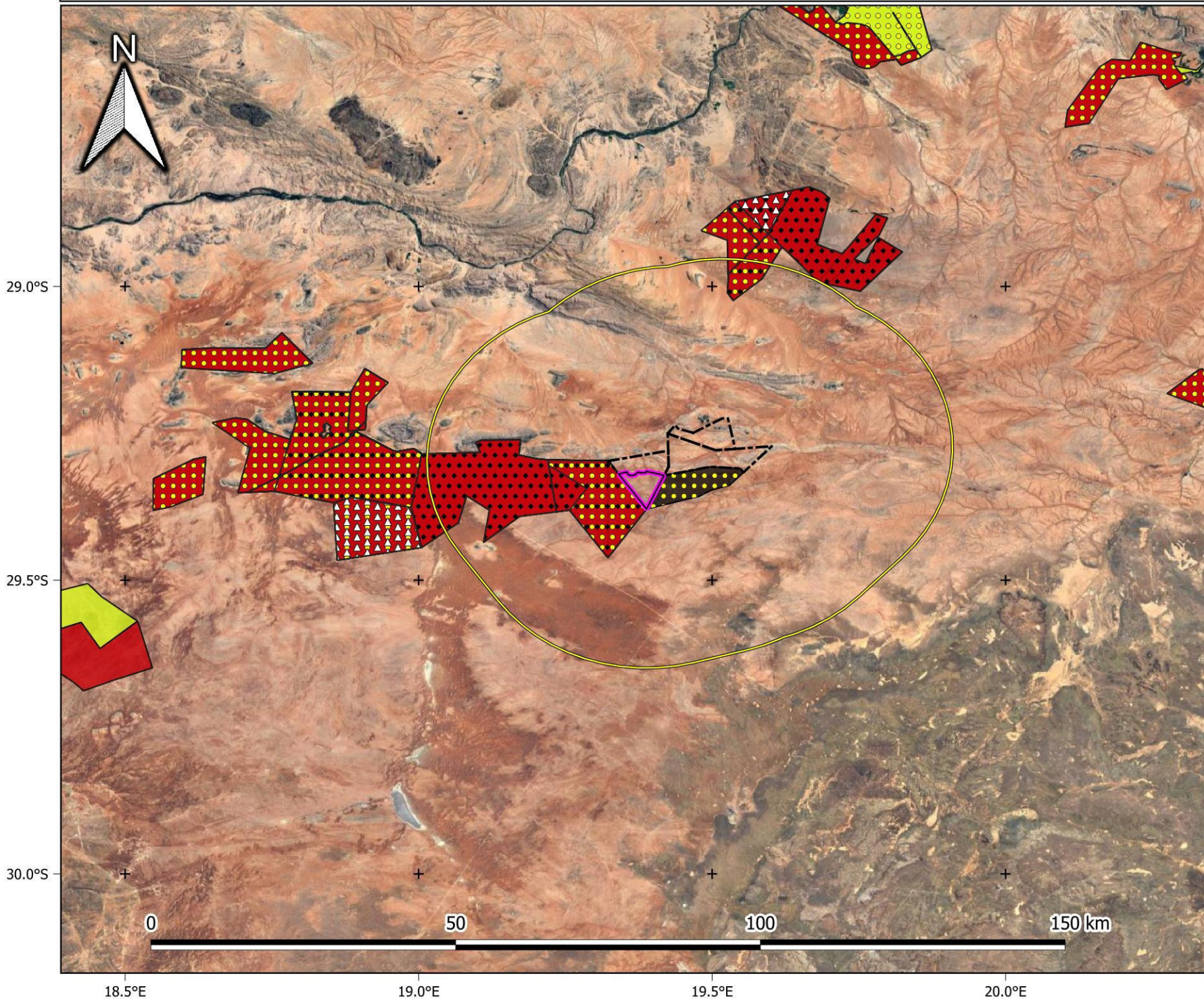
1:650 000

## Provincial Context





# De Rust: Solar PV - Renewable energy developments in proximity (Alternative)



### Legend

- Solar PV Area
- Farm portions
- Farm portion 30km buffer

### Technology (REEA 2022 Q3)

- CSP
- PV
- Wind

### Status (REEA 2022 Q3)

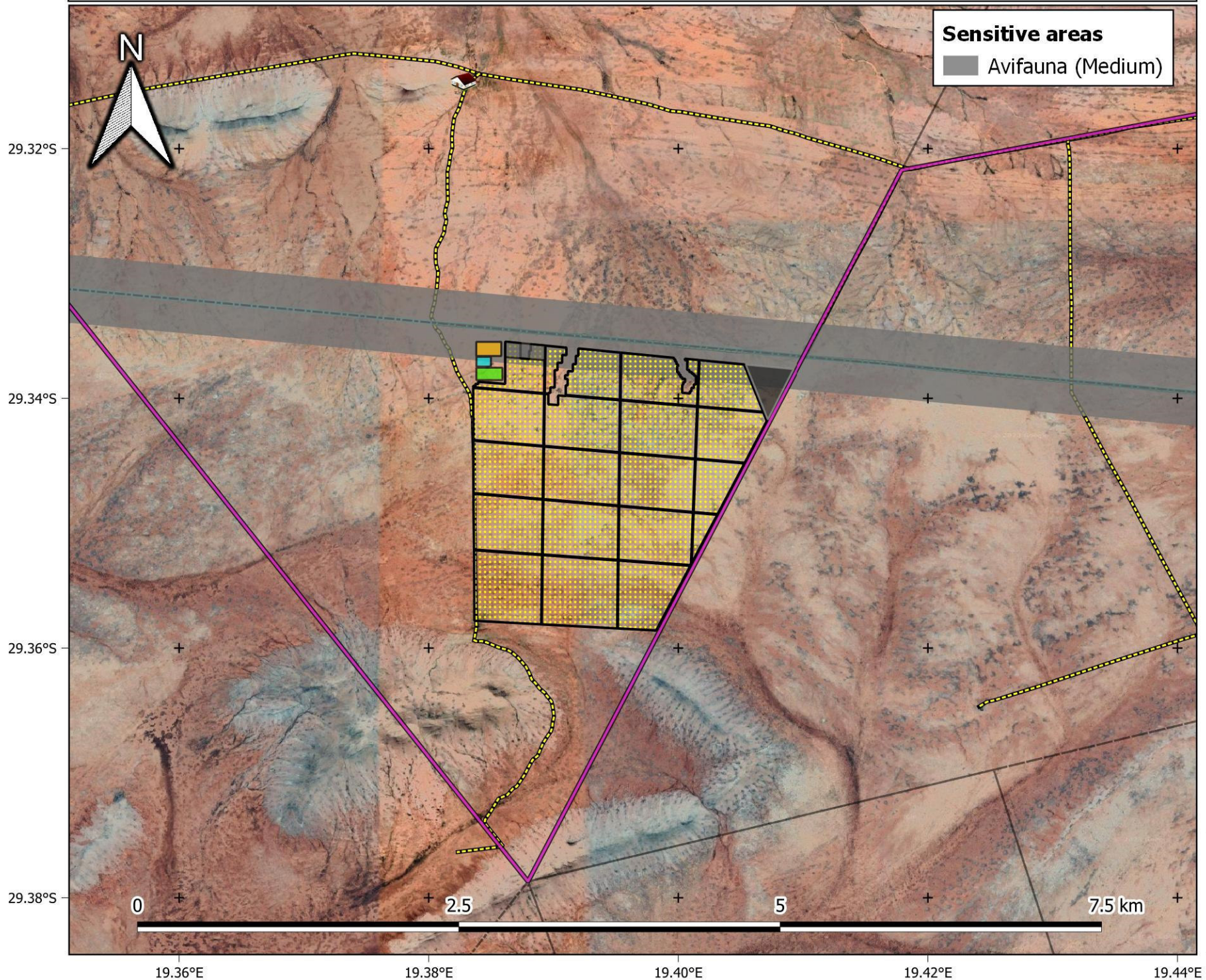
- Approved
- In process
- Houmoed WEF (pre-application)

1:650 000





# De Rust: Solar PV2 - Habitat Sensitivity



### Legend

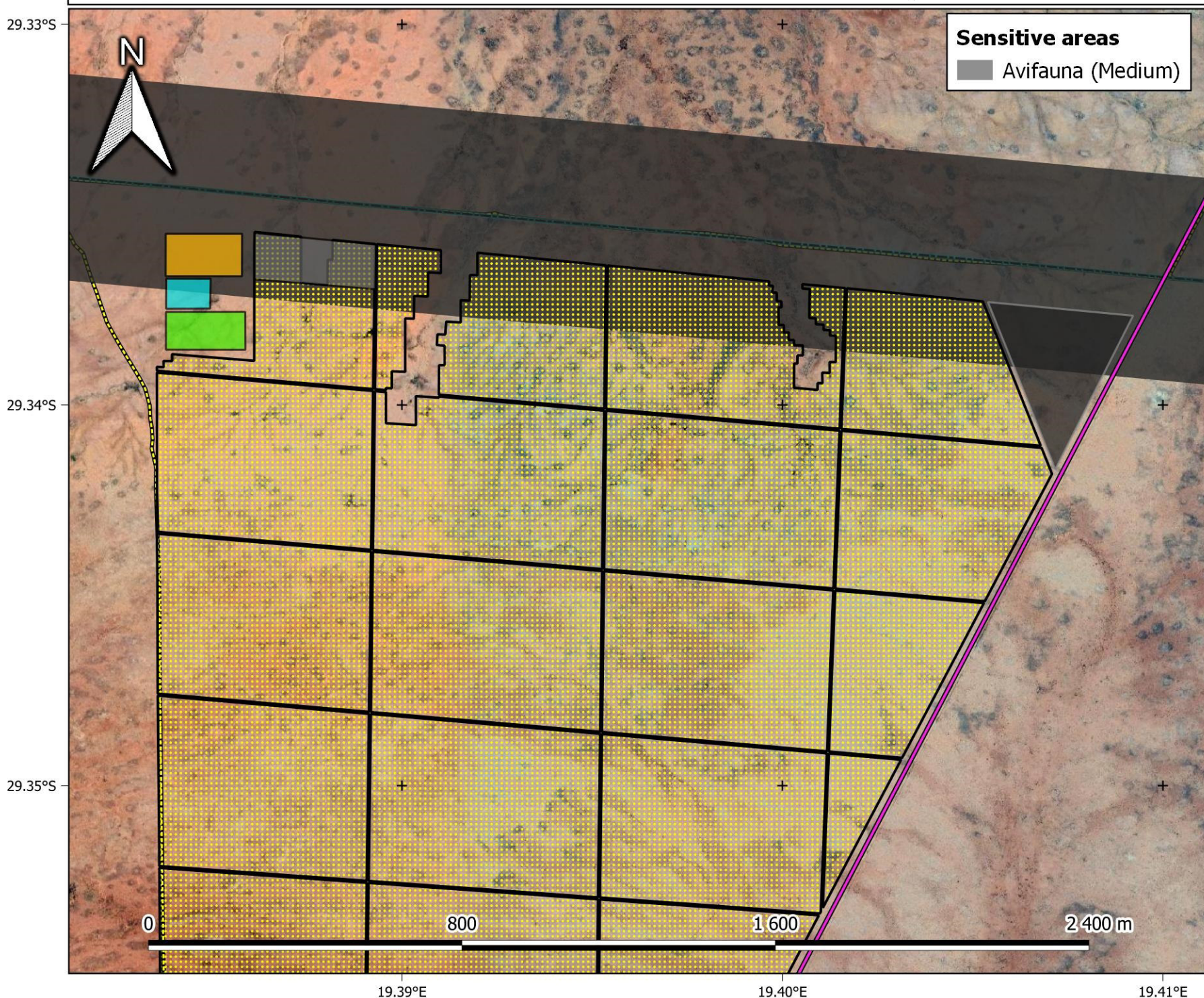
- Farm portion**
  - Farm houses
- Existing infrastructure**
  - OH powerlines
  - Roads
- Proposed infrastructure**
  - Solar PV area (alternative 1)
  - BESS
  - O&M building
  - OSS
  - Accommodation
  - Temp. laydown

1:30 000





# De Rust: Solar PV2 - Habitat Sensitivity



**Sensitive areas**

- Avifauna (Medium)

**Legend**

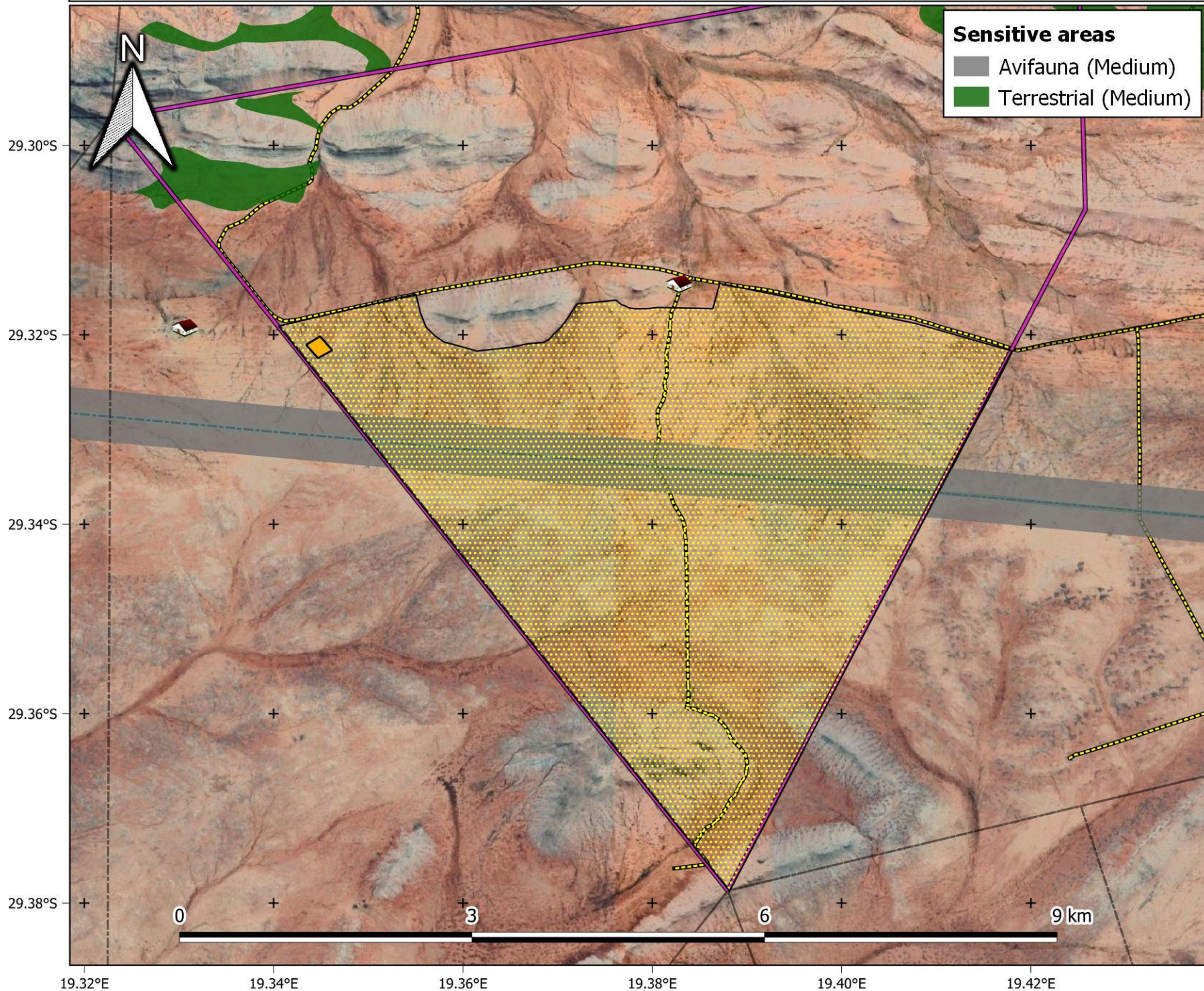
- Farm portions
- Existing infrastructure**
  - Farm houses
  - OH powerlines
  - Roads
- Proposed infrastructure**
  - Solar PV area (alternative 1)
  - BESS
  - O&M building
  - OSS
  - Accommodation
  - Temp. laydown

1:10 000

**Provincial Context**



# De Rust: Solar PV - Habitat Sensitivity (Alternative Layout)



**Sensitive areas**

- Avifauna (Medium)
- Terrestrial (Medium)

**Legend**

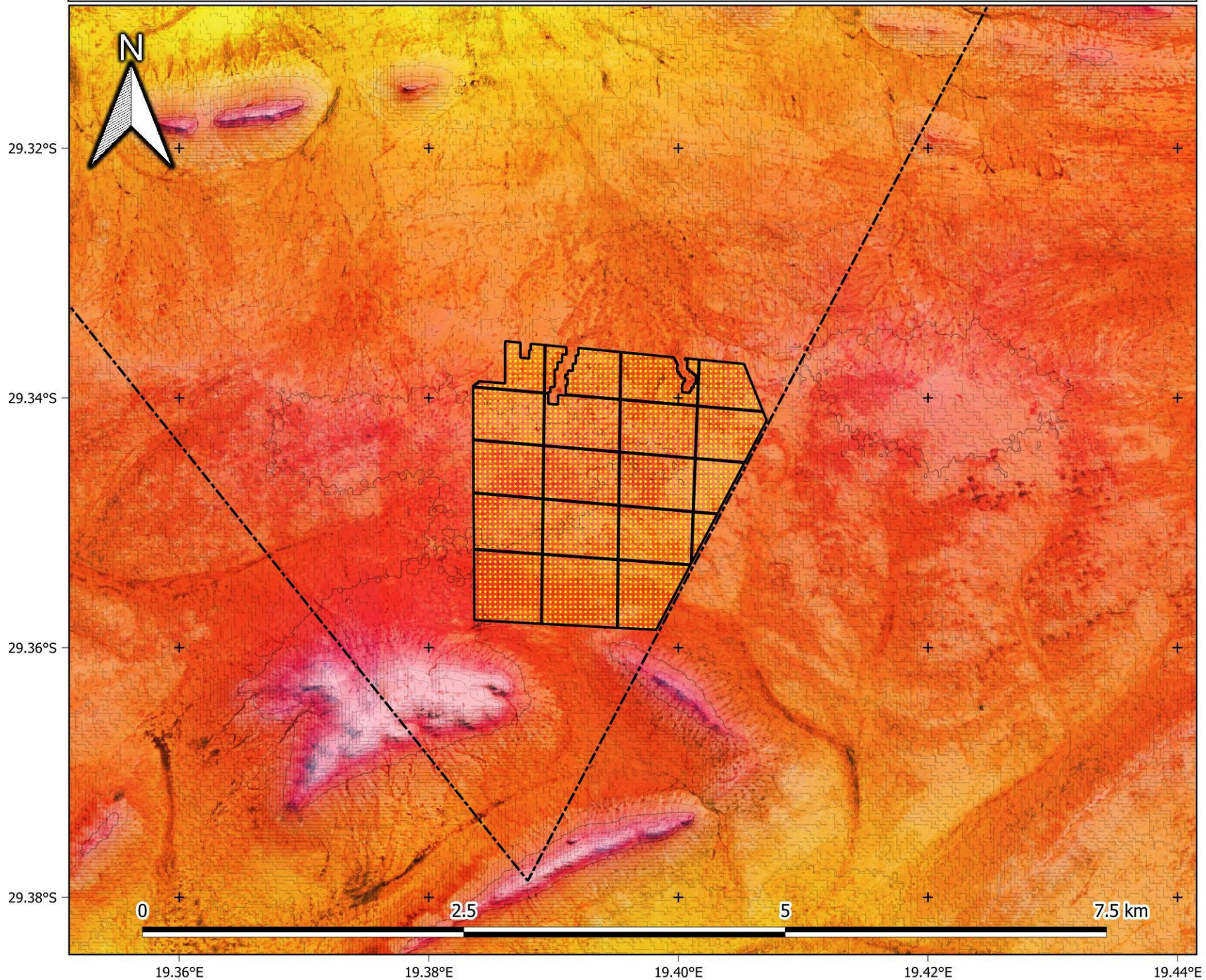
- Farm portion
- Farm portions
- Existing infrastructure**
  - Farm houses
  - OH powerlines
  - Roads
- Proposed infrastructure**
  - Solar PV area (alternative 2)
  - OSS

1:40 000

**Provincial Context**



# De Rust: Solar PV2 - Topography



### Legend

- Solar PV area
- Farm portion

#### Farm portions

#### Contours

- 10 m
- 50 m

#### Elevation (masl)

- 950
- 1000
- 1022
- 1046
- 1077
- 1111
- 1130

1:30 000

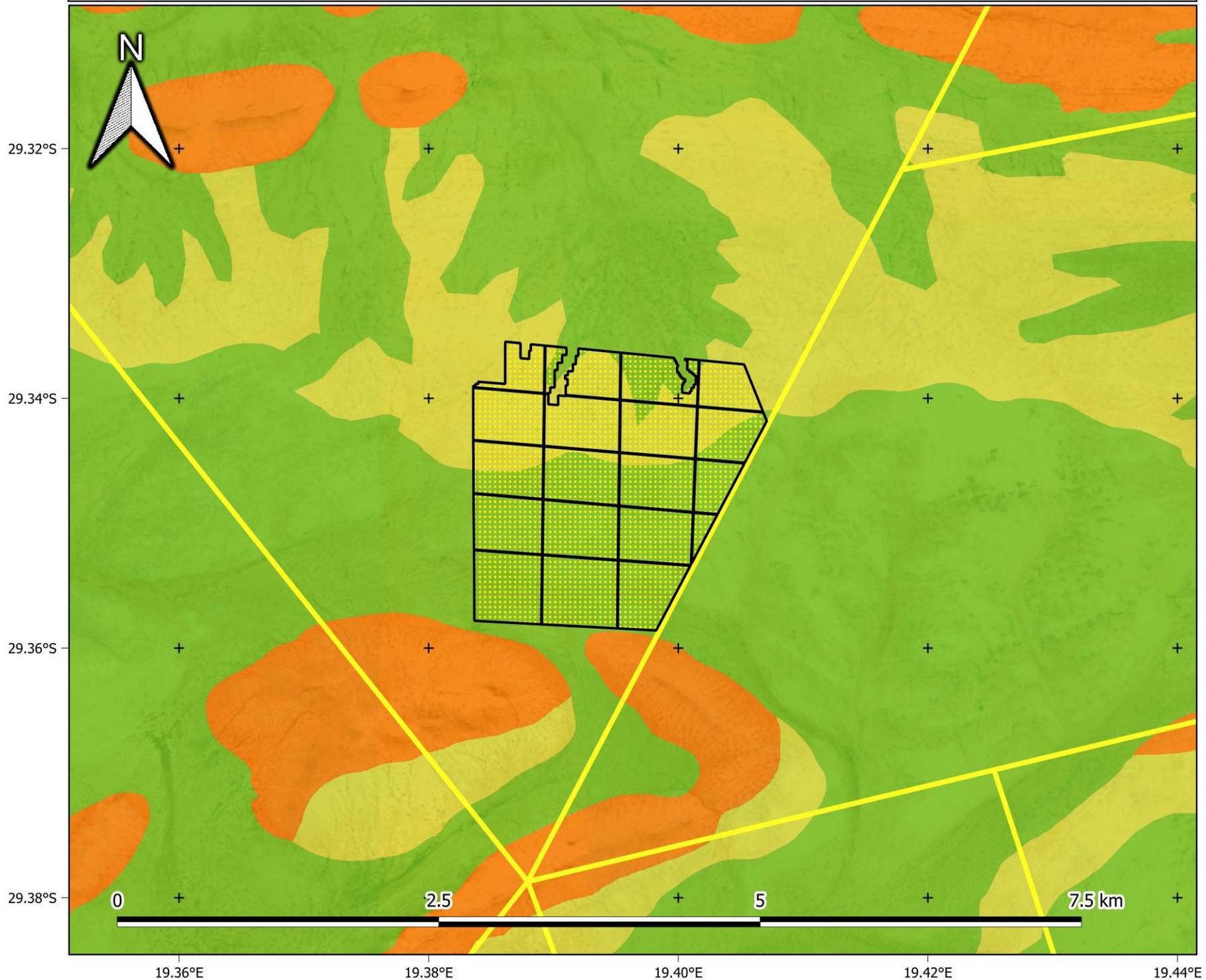
### Provincial Context

The map shows the outline of South Africa with its provincial boundaries. A green dot is placed in the western part of the country, indicating the location of De Rust in the Western Cape province.

The logo for EnviroINSIGHT, featuring the word "Enviro" in green and "INSIGHT" in blue, with "environmental impact assessments" written in smaller green text below.



# De Rust: Solar PV2 - Vegetation



### Legend

- Solar PV area
- Farm portions

### VegMap (2018)

- Aggeneys Gravel Vygieveld
- Bushmanland Arid Grassland
- Bushmanland Inselberg Shrubland

1:30 000

### Provincial Context



# Appendix A2:

## Photographs





## De Rust Solar PV1 and PV 2









