











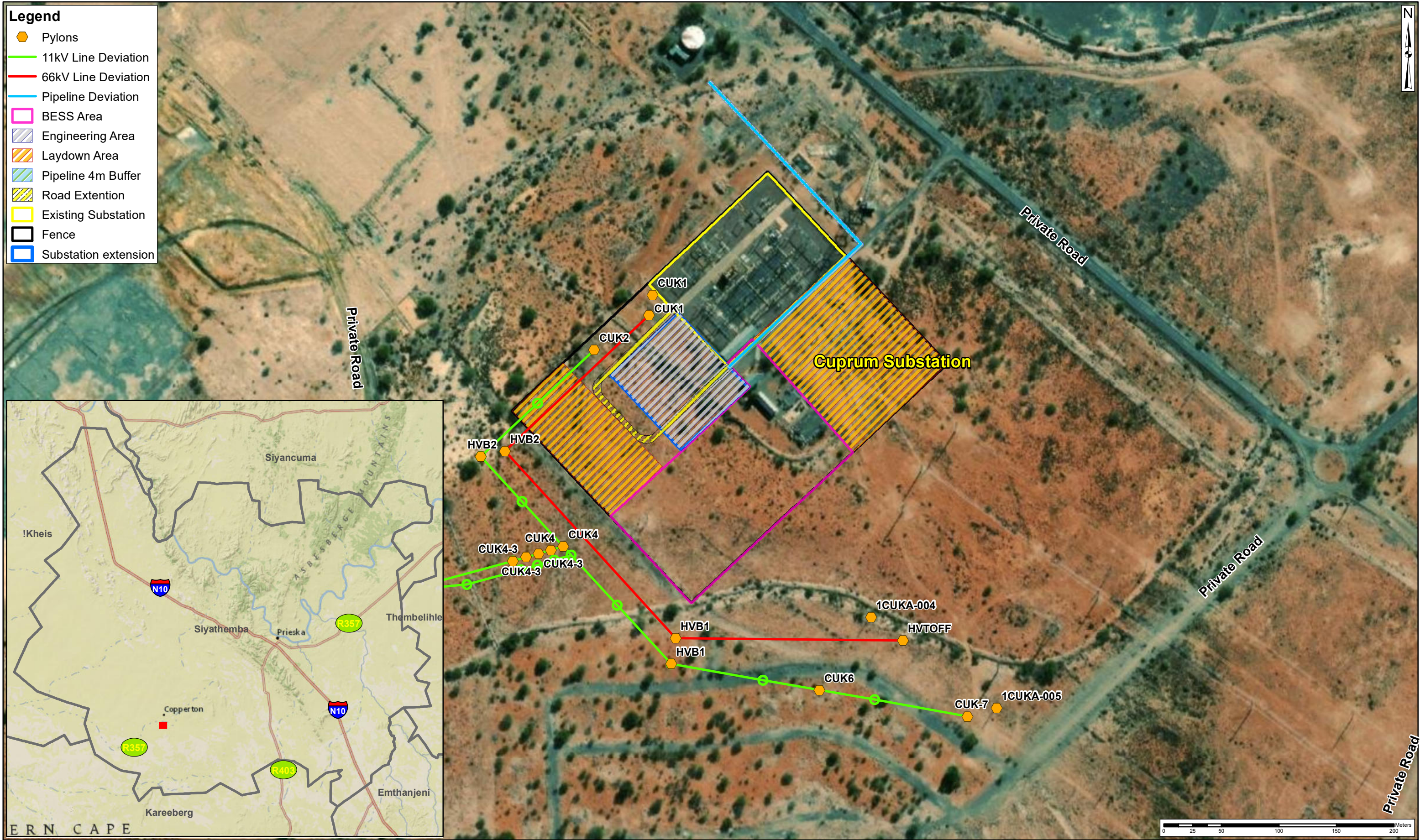


Legend

-  Pylons
-  11kV Line Deviation
-  66kV Line Deviation
-  Pipeline Deviation
-  BESS Area
-  Engineering Area
-  Laydown Area
-  Pipeline 4m Buffer
-  Road Extension
-  Existing Substation
-  Fence
-  Substation extension



Project Title:	Eskom Battery Energy Storage System (BESS): Basic Assessment	Scale 1:3 000 <small>(When page size is: A3 landscape)</small>	Figure 1
	Siyathemaba Local Municipality, Northern Cape Province	Projection: Transverse Mercator Datum: Hartbeesthoek 1994 Central Meridian: 23.0	Sources: Source: Esri, Maxar, GeoEye, Earthstar Geographics, CNES/Airbus DS, USDA, USGS, AeroGRID, IGN, and the GIS User Community Esri, HERE, Garmin, (c) OpenStreetMap contributors National Geographic, Esri, Garmin, HERE, UNEP-WCMC, USGS, NASA, ESA, METI, NRCAN, GEBCO, NOAA, increment P Corp.
Map Title:	Locality Map	Compiled By: GA Maree	
<small>Whilst every care has been taken in compiling the information on this map, AECOM cannot accept responsibility for any inaccuracies.</small>		Approved By: D Govender	
<small>© Copyright</small>		Date Saved: 2022/11/15	
		Project Number: 60657237	
		Map Ref: LocalityPlan4.mxd	
		Revision: 00	
<small>L:\Legacy\GISData\7_Projects\60657237_EskomBESS_Prieska\mxd\LocalityPlan4.mxd</small>			

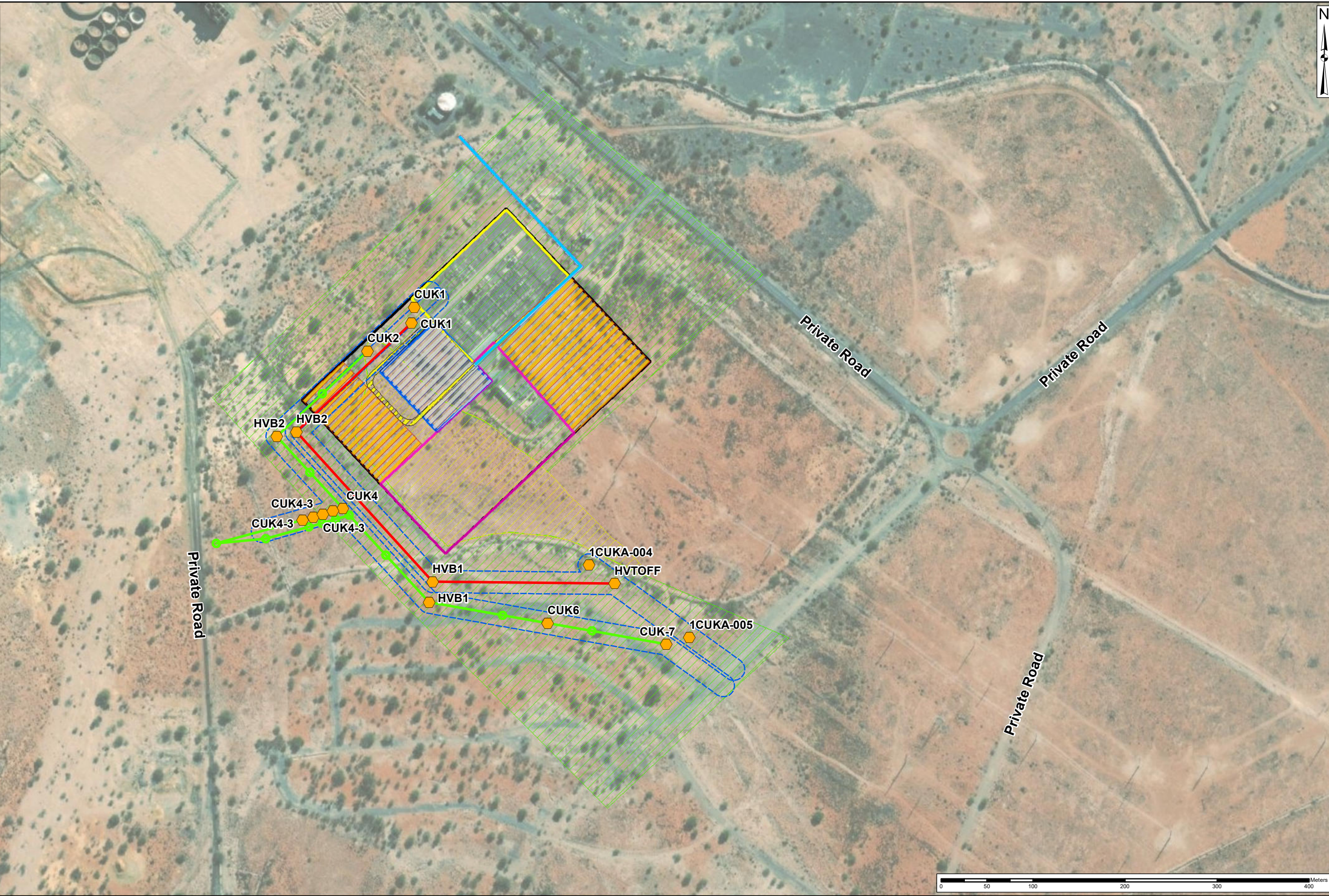


Legend

- Pylons
- 11kV Line Deviation
- 66kV Line Deviation
- Pipeline Deviation
- Powerlines Buffer 12m
- BESS Area
- Engineering Area
- Laydown Area
- Pipeline 4m Buffer
- Road Extension
- Existing Substation
- Fence
- Substation extension

Combined Sensitivity

- Medium-low
- Low



Project Title:	Eskom Battery Energy Storage System (BESS): Basic Assessment	Scale 1:4 000 <small>(When page size is: A3 landscape)</small>	Figure 2
Map Title:	Layout Map	Projection: Transverse Mercator Datum: Hartbeesthoek 1994 Central Meridian: 23.0 Compiled By: GA Maree	Sources: Source: Esri, Maxar, GeoEye, Earthstar Geographics, CNES/Airbus DS, USDA, USGS, AeroGRID, IGN, and the GIS User Community
<small>Whilst every care has been taken in compiling the information on this map, AECOM cannot accept responsibility for any inaccuracies.</small>		GIS QC By: Approved By: D Govender Date Saved: 2021/11/18 Project Number: 60657237 Map Ref: LayoutMap2.mxd Revision: 00	
<small>© Copyright</small>		<small>L:\Legacy\GISData\7_Projects\60657237_EskomBESS_Prieska\mxd\LayoutMap2.mxd</small>	



Legend

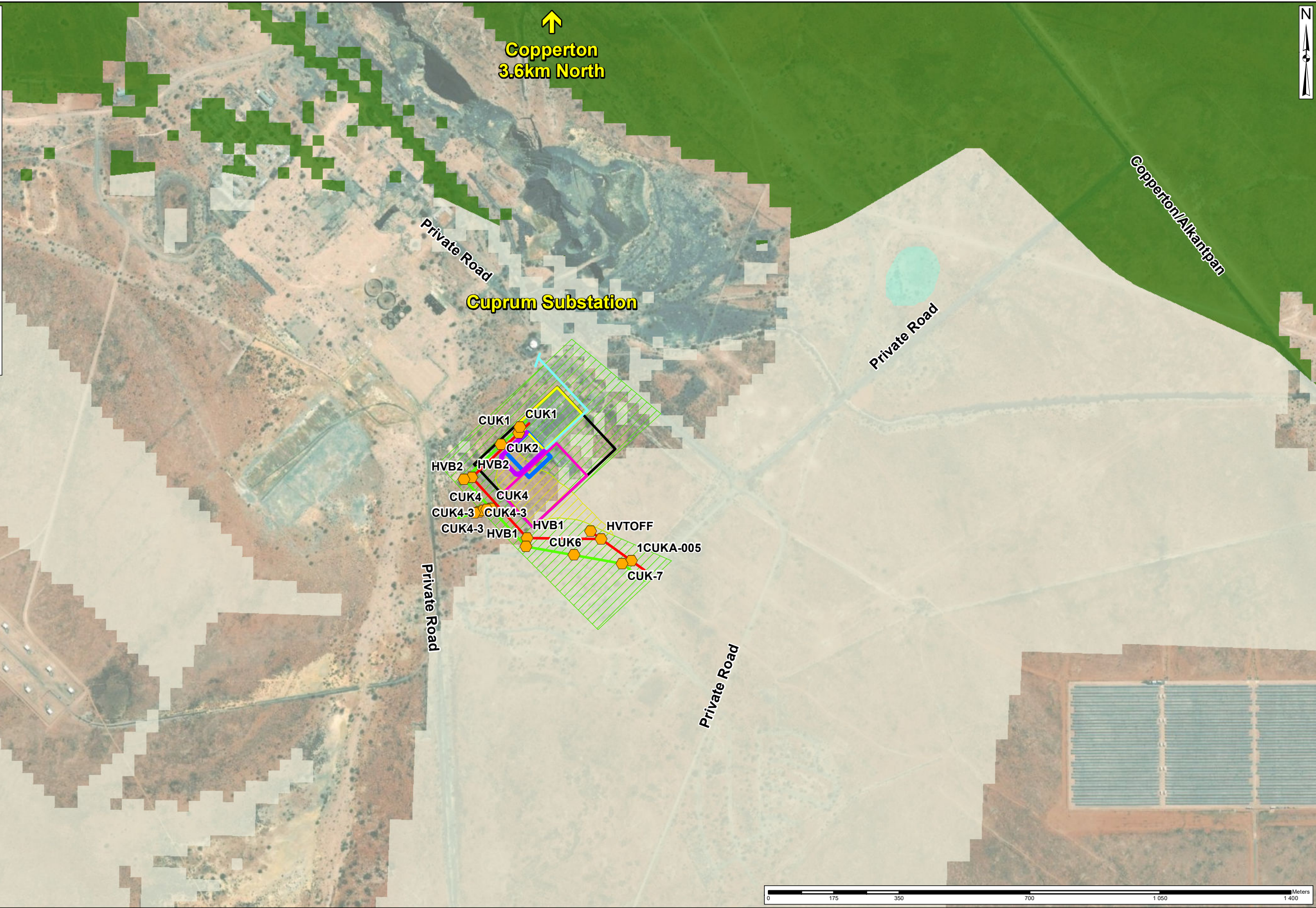
- Pylons
- 11 kV overhead powerline
- 66 kV overhead powerline
- Pipeline
- Road Upgrade
- BESS Area
- Existing Substation
- Fence
- Substation extension

Combined Sensitivity

- Medium-low
- Low

Northern Cape CBA Map

- Critical Biodiversity Area One
- Ecological Support Area
- Other Natural Areas



Project Title:	Eskom Battery Energy Storage System (BESS): Basic Assessment	Scale 1:10 000 <small>(When page size is: A3 landscape)</small>	Figure 2
Map Title:	Composite Sensitivity Map	Projection: Transverse Mercator Datum: Hartbeesthoek 1994 Central Meridian: 23.0 Compiled By: GA Maree	Sources: Source: Esri, Maxar, GeoEye, Earthstar Geographics, CNES/Airbus DS, USDA, USGS, AeroGRID, IGN, and the GIS User Community National Geographic, Esri, Garmin, HERE, UNEP-WCMC, USGS, NASA, ESA, METI, NRCAN, GEBCO, NOAA, increment P Corp.
<small>Whilst every care has been taken in compiling the information on this map, AECOM cannot accept responsibility for any inaccuracies.</small>		GIS QC By: Date Saved: 2021-11-19 Project Number: 60657237 Map Ref: Sensitivity.mxd Revision: 00	
AECOM		<small>L:\Legacy\GISData\7_Projects\60657237_EskomBESS_Prieska\mxd\Sensitivity.mxd</small>	