

FIGURE LIST

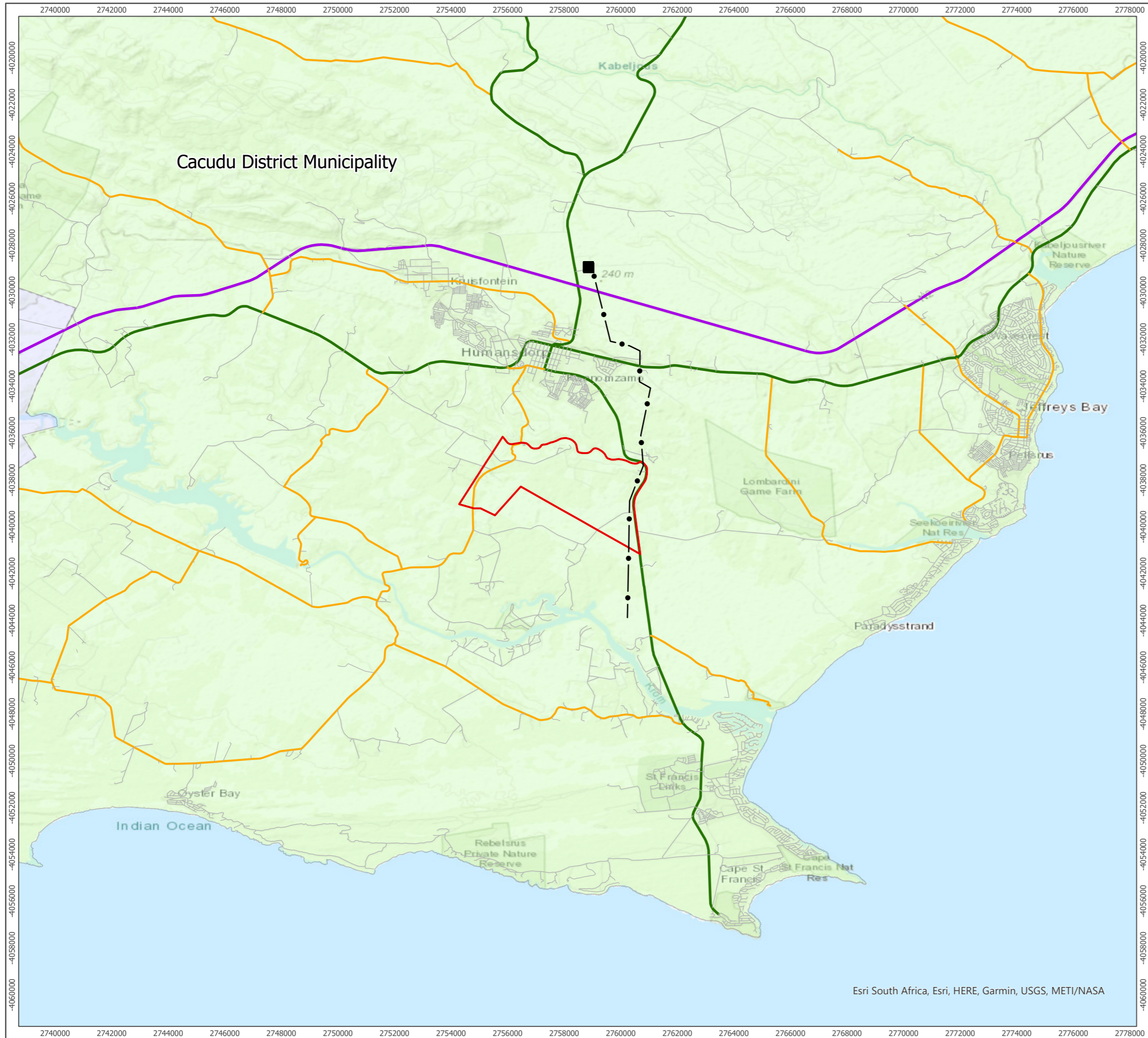
Figure 1 - Site Locality Map

Figure 2 - Site Development Plan

Figure 3 - Geographic Co-ordinates

Figure 4 - Environmental Sensitivity Map

Figure 5 - Cumulative Assessment Map



- Existing Eskom Melkhoutbosch Substation
- Existing Melkhout/St Francis Bay 2 66 kV Overhead Line
- ▭ Banna ba Pifhu Site Boundary
- Local Municipalities**
- ▭ Kougas Local Municipality
- ▭ Kou-Kamma Local Municipality
- Existing Public Roads**
- ▬ National Road
- ▬ Main Road
- ▬ Secondary Road
- ▬ Minor Road



Produced By: AD	Ref: 3109-REP-XXX
Checked By: SC	Date: 19/05/2022

Site Locality Map
Figure 1

Banna Ba Pifhu
Part II Amendment

Esri South Africa, Esri, HERE, Garmin, USGS, METI/NASA



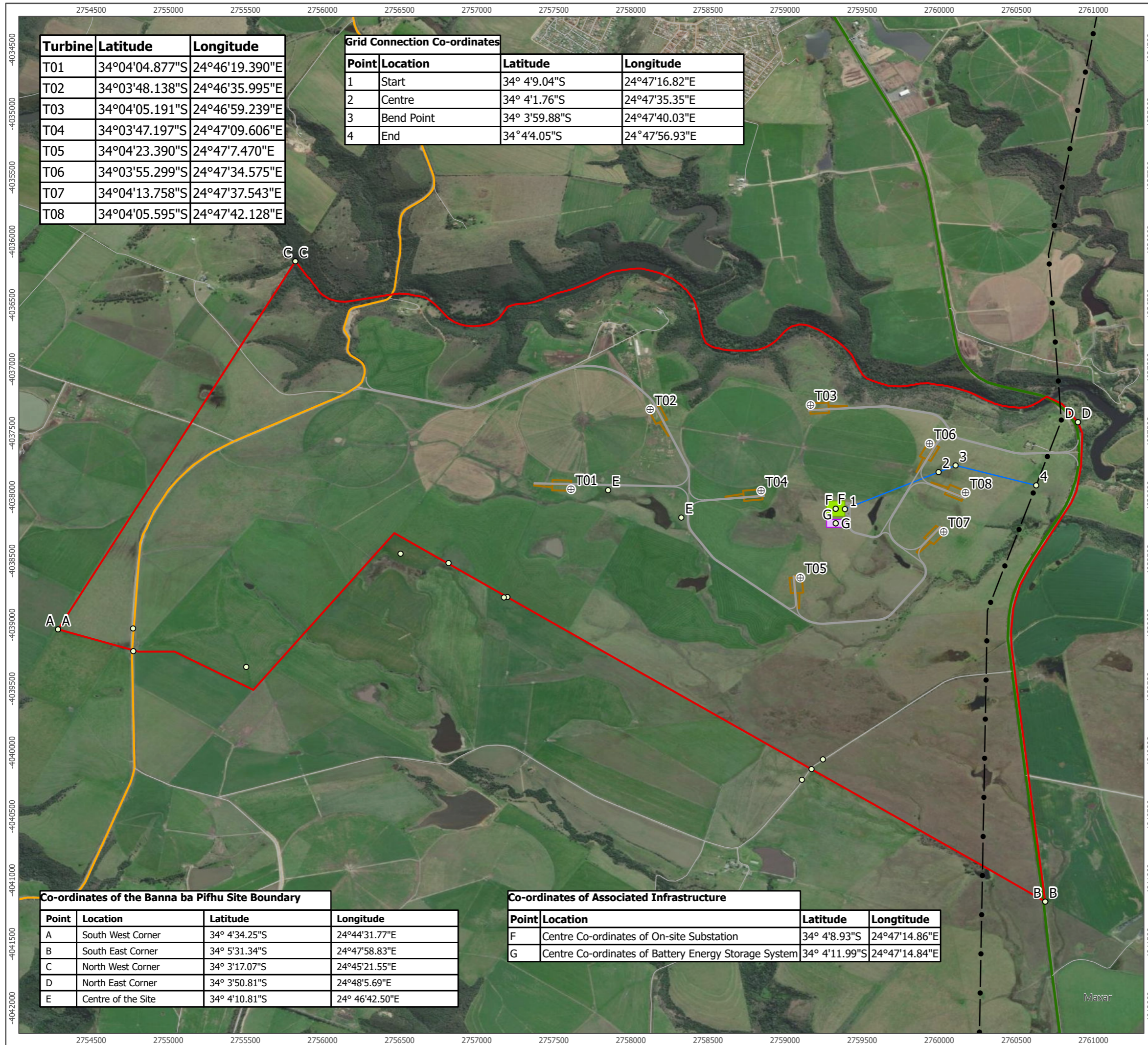
- Existing Melkhout/St Francis Bay 2 66 kV Overhead Line
- ▭ Banna ba Pifhu Site Boundary
- Banna ba Pifhu WEF**
- ⊕ Amended Turbine Locations
- ▭ On-Site Substation
- ▭ Battery Energy Storage System
- Crane Hardstanding
- Access Tracks
- Banna ba Pifhu Grid Connection**
- Grid Connection
- Existing Public Roads**
- Main Road
- Secondary Road
- Minor Road



Produced By: AD	Ref: 3109-REP-003
Checked By: SC	Date: 01/06/2022

Site Development Plan
Figure 2

Banna Ba Pifhu
Part II Amendment



Turbine	Latitude	Longitude
T01	34°04'04.877"S	24°46'19.390"E
T02	34°03'48.138"S	24°46'35.995"E
T03	34°04'05.191"S	24°46'59.239"E
T04	34°03'47.197"S	24°47'09.606"E
T05	34°04'23.390"S	24°47'7.470"E
T06	34°03'55.299"S	24°47'34.575"E
T07	34°04'13.758"S	24°47'37.543"E
T08	34°04'05.595"S	24°47'42.128"E

Grid Connection Co-ordinates			
Point	Location	Latitude	Longitude
1	Start	34° 4'9.04"S	24°47'16.82"E
2	Centre	34° 4'1.76"S	24°47'35.35"E
3	Bend Point	34° 3'59.88"S	24°47'40.03"E
4	End	34° 4'4.05"S	24° 47'56.93"E

Co-ordinates of the Banna ba Pifhu Site Boundary			
Point	Location	Latitude	Longitude
A	South West Corner	34° 4'34.25"S	24°44'31.77"E
B	South East Corner	34° 5'31.34"S	24°47'58.83"E
C	North West Corner	34° 3'17.07"S	24°45'21.55"E
D	North East Corner	34° 3'50.81"S	24°48'5.69"E
E	Centre of the Site	34° 4'10.81"S	24° 46'42.50"E

Co-ordinates of Associated Infrastructure			
Point	Location	Latitude	Longitude
F	Centre Co-ordinates of On-site Substation	34° 4'8.93"S	24°47'14.86"E
G	Centre Co-ordinates of Battery Energy Storage System	34° 4'11.99"S	24°47'14.84"E



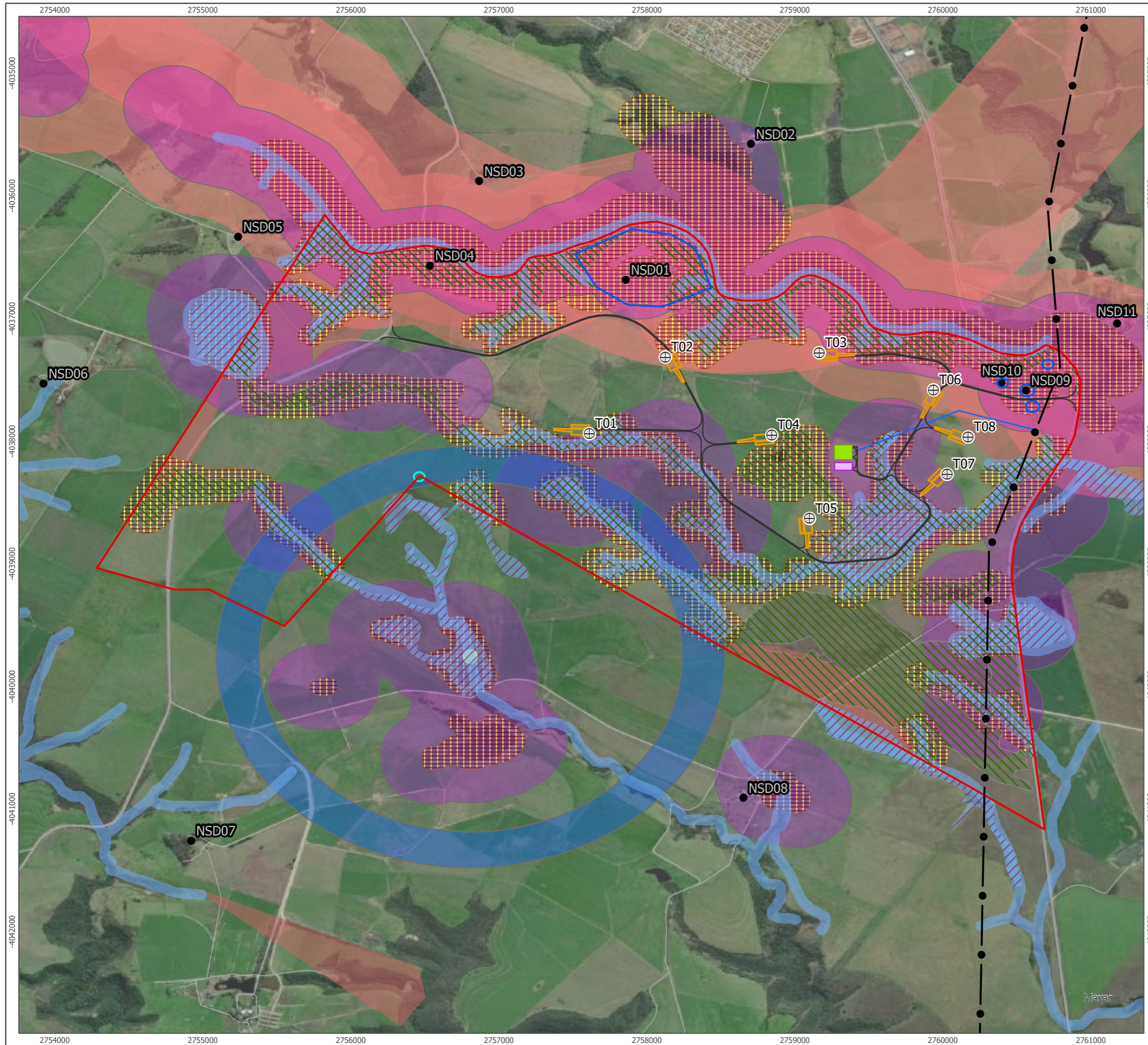
- Existing Melkhout/St Francis Bay 2 66 kV Overhead Line
- Banna ba Pifhu Site Boundary
- Banna ba Pifhu WEF**
- On-Site Substation
- Battery Energy Storage System
- Access Tracks
- Crane Hardstanding
- Grid Connection**
- Banna ba Pifhu Grid Connection**
- Existing Public Roads
- Existing Public Roads**
- Secondary Road
- Minor Road



Produced By: AD	Ref: 3109-REP-004-2
Checked By: SC	Date: 6/7/2022

Site Development Co-ordinates
Figure 3

Banna Ba Pifhu
Part II Amendment



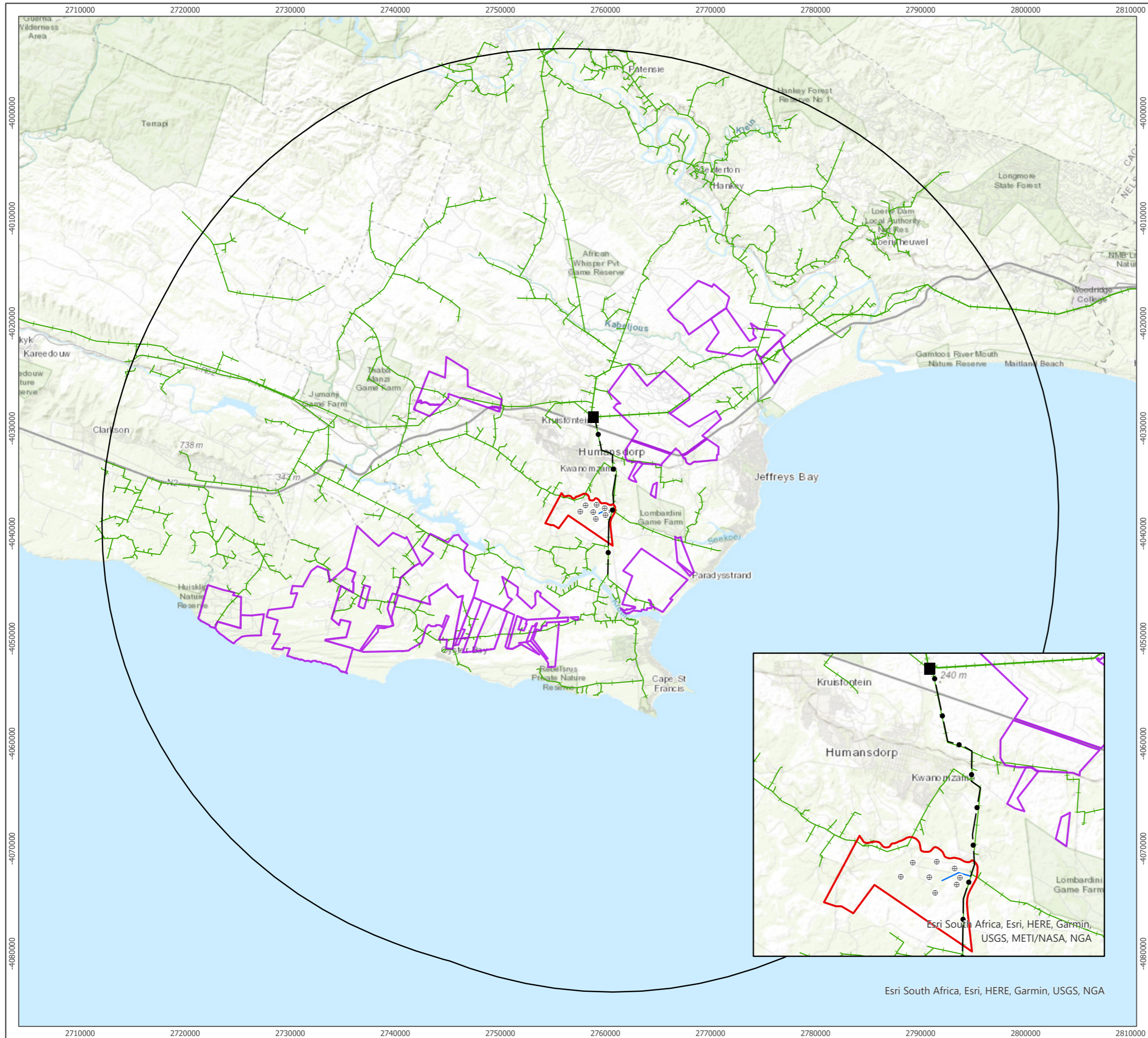
- Existing Melkhout/St Francis Bay 2 66 kV Overhead Line
- NSD Locations
- Existing Public Roads
- ▭ Banna ba Pifhu Site Boundary
- Banna ba Pifhu WEF**
- ⊕ Amended Turbine Locations
- On-Site Substation
- Battery Energy Storage System
- Crane Hardstanding
- Access Tracks
- Banna ba Pifhu Grid Connection**
- Grid Connection
- Environmental WTG No-Go Sensitivities (other infrastructure permitted)**
- ▨ High Sensitivity Riparian and Wetland Features
- High Aquatic Sensitivity
- ▨ High Ecological Sensitivity
- Avifauna Sensitivities**
- Blue Crane Roost Site
- No-Go Turbines 1.4 km buffer
- Bat Sensitivities**
- Bat Sensitivity 281m buffer(Additional)
- ▨ Bat Sensitivity (Original)
- ▨ Bat Sensitivity incl. 110 m Blade(Original)
- Environmental Sensitivities (WTG and Infrastructure Permitted)**
- Towns 2 km Buffer
- River 500 m Buffer
- Farms 500 - 1000 m Buffer
- Medium Heritage Sensitivities
- Low Heritage Sensitivities



Produced By: AD	Ref: 3109-REP-005
Checked By: SC	Date: 01/06/2022

Environmental Sensitivities
Figure 4

Banna Ba Pifhu
Part II Amendment



- Existing Eskom Melkhoutbosch Substation
- Existing Melkhout/St Francis Bay 2 66 kV Overhead Line
- ▭ Banna ba Pifhu Site Boundary
- 35 km Search Area
- ▭ Renewable Energy Projects within 35 km
- Existing Power Lines within 35 km
- Banna ba Pifhu WEF**
- ⊕ Amended Turbine Locations
- Banna ba Pifhu Grid Connection**
- Grid Connection

1:350,000 Scale @ A3
 0 7 13 km
 NORTH

Produced By: AD	Ref: 3109-REP-006
Checked By: SC	Date: 01/06/2022

Cumulative Assessment
 Figure 5

Banna Ba Pifhu
Part II Amendment