

Appendix A:

Preliminary Mapping and Photographs

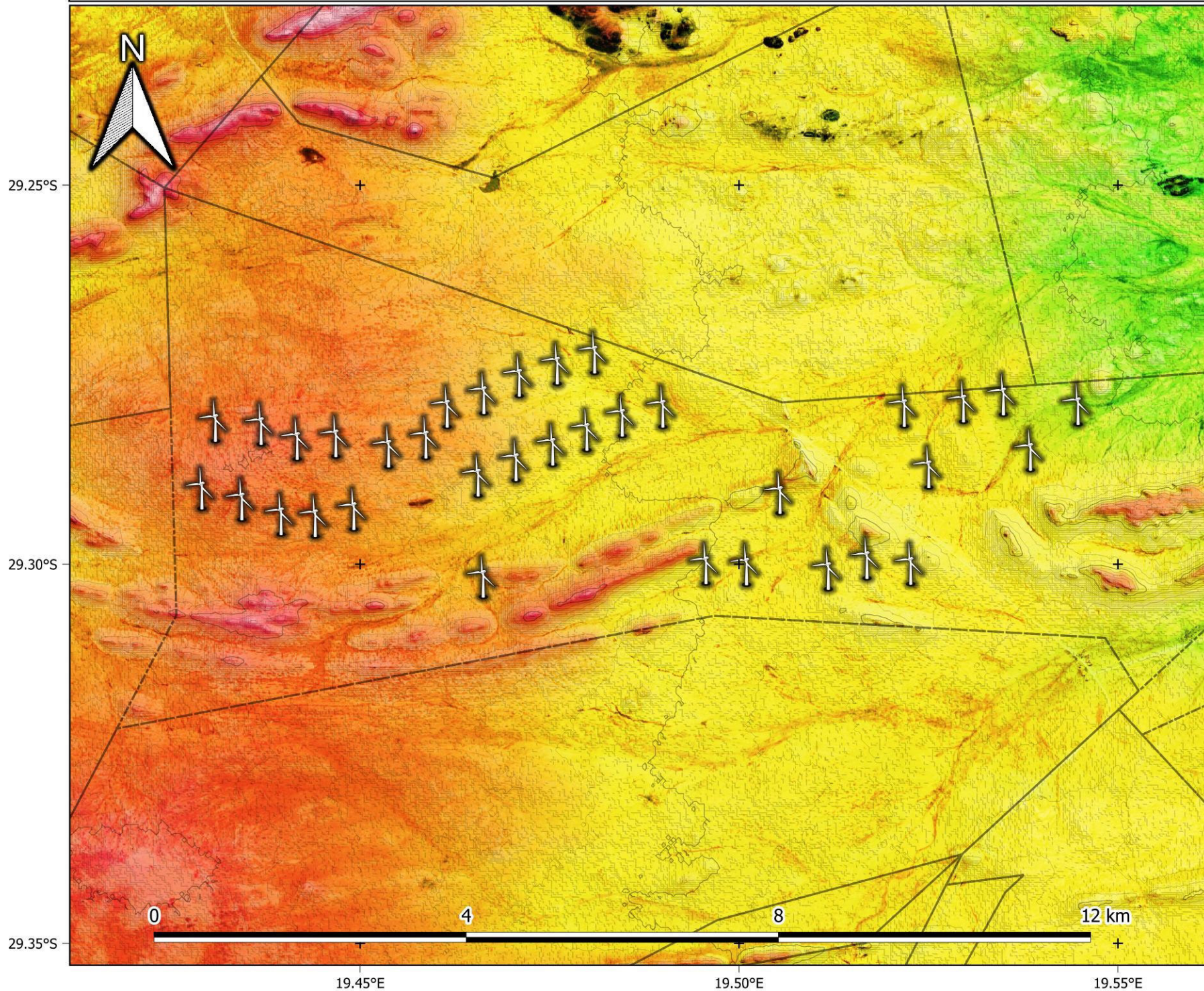


Appendix A1:

Preliminary Mapping



De Rust: WEF South - Topography





Legend








 Turbine layout

 Farm portions

Contours

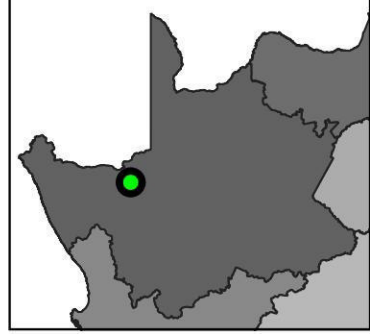
 10 m
 50 m

Elevation (masl)

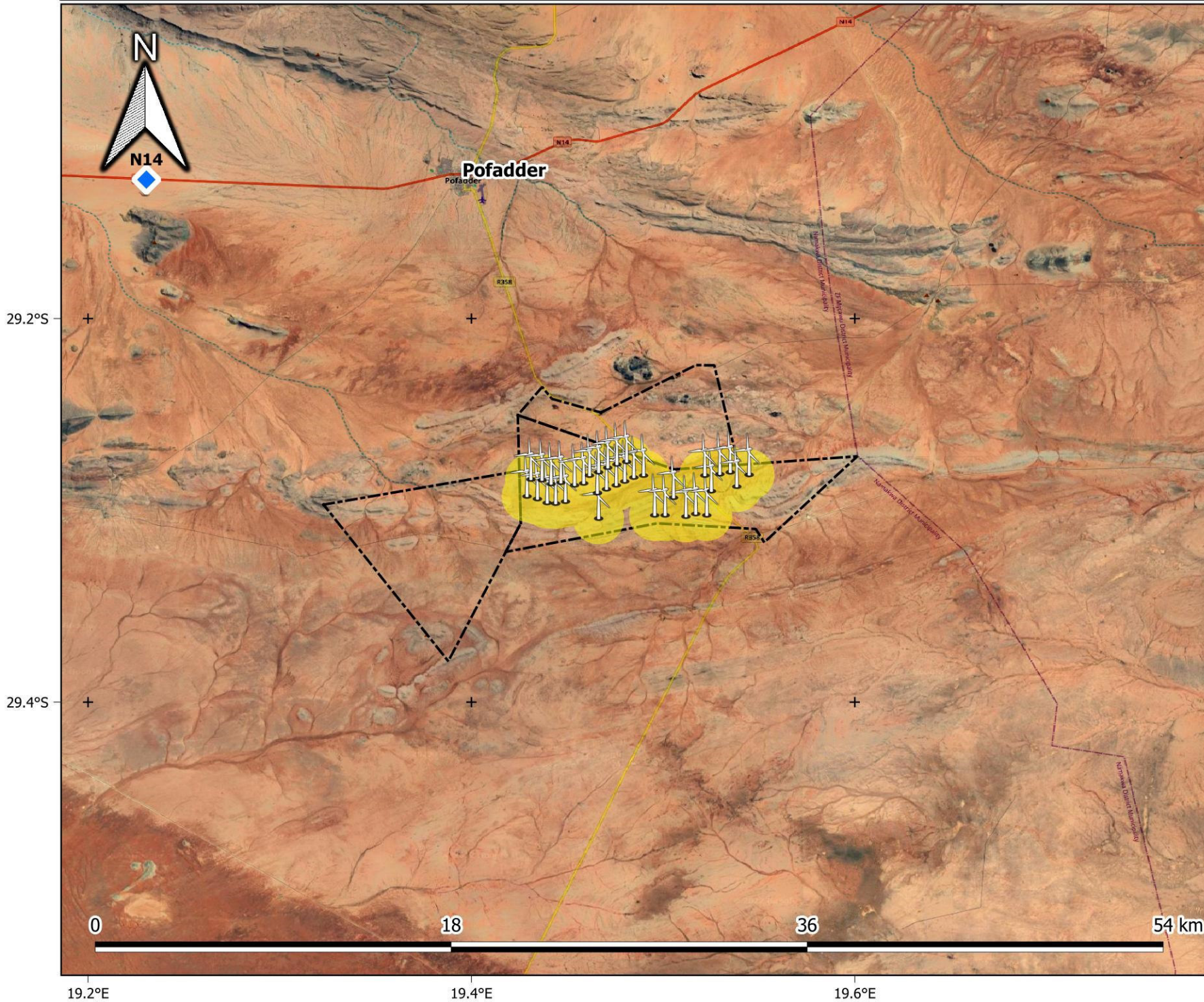
 950
 1000
 1022
 1046
 1077
 1111
 1130

1:50 000



Provincial Context



De Rust: WEF South - Aerial

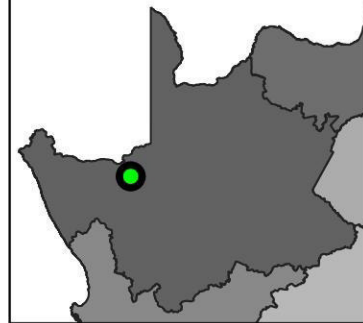


Legend

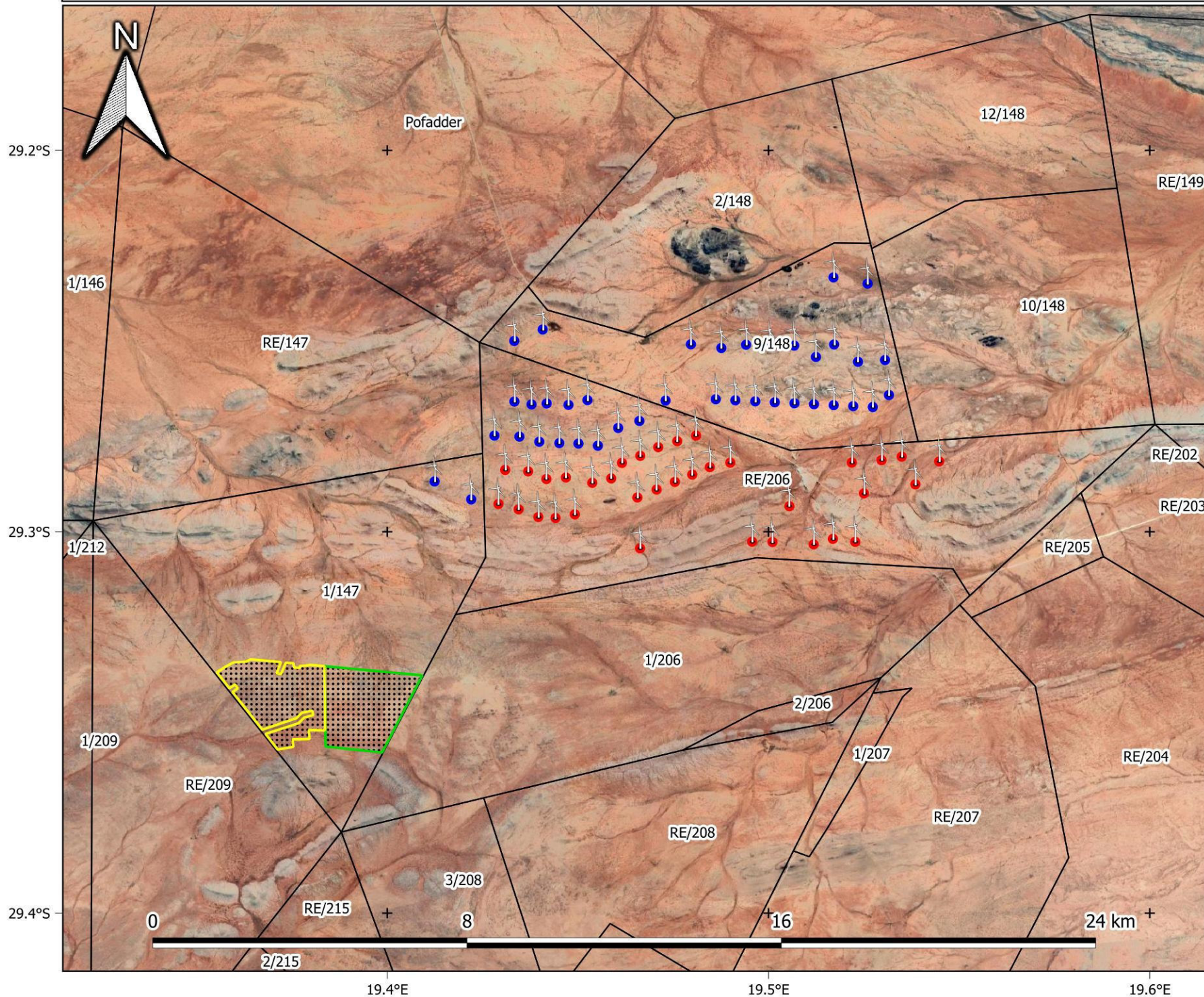
-  Turbine layout (alternative 1)
-  Farm portions

1:200 000

Provincial Context



De Rust: combined projects and farm portions (alternative 1)



Legend

- Farm portions
- Turbines**
 - North WEF
 - South WEF
- Solar**
 - Solar PV1
 - Solar PV2

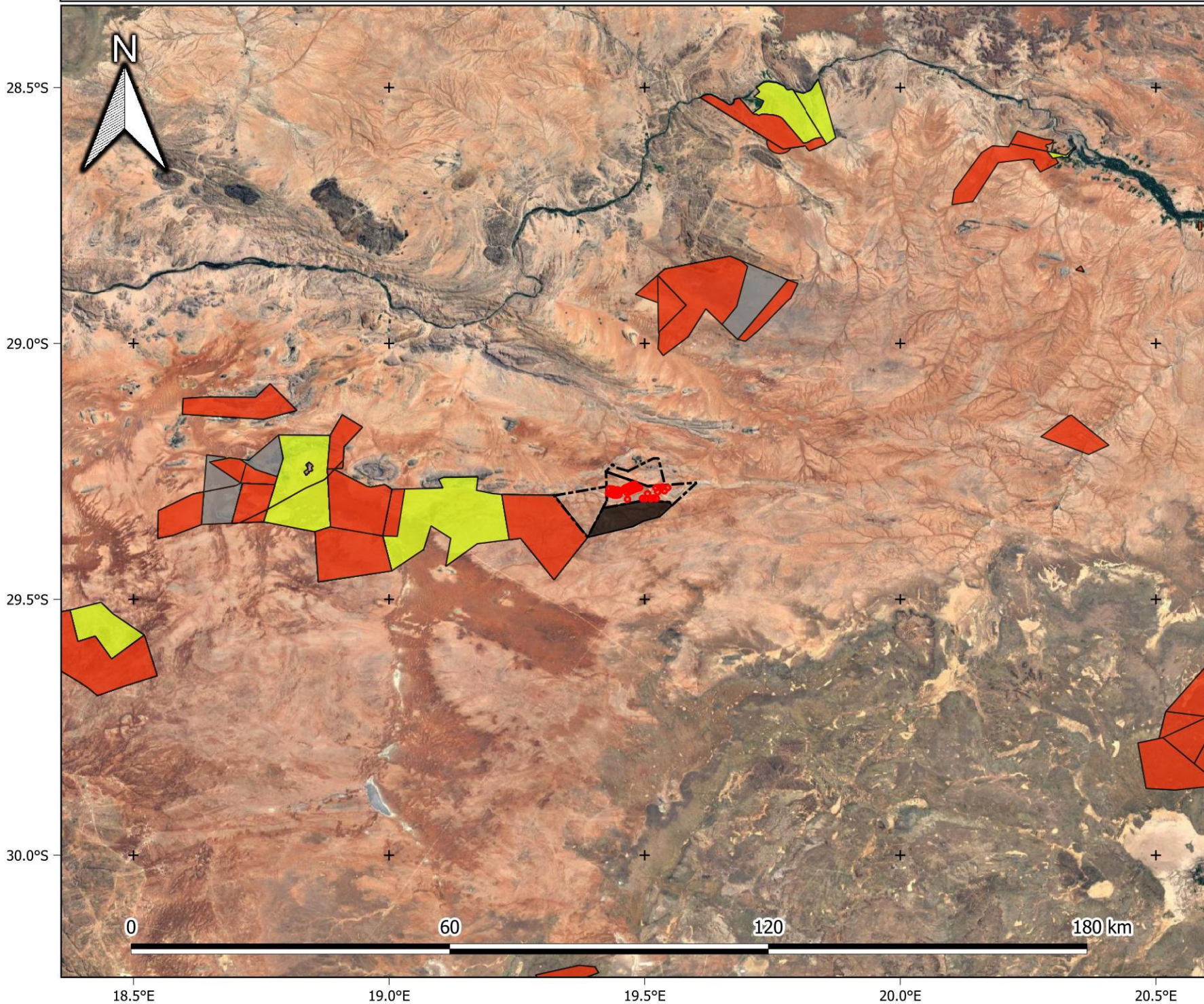
1:100 000

Provincial Context

A map of South Africa showing provincial boundaries. A green dot is placed in the Western Cape province to indicate the location of the De Rust project area.

EnviroINSIGHT
environmental impact assessments

De Rust: WEF South - Renewable energy developments in proximity



Legend

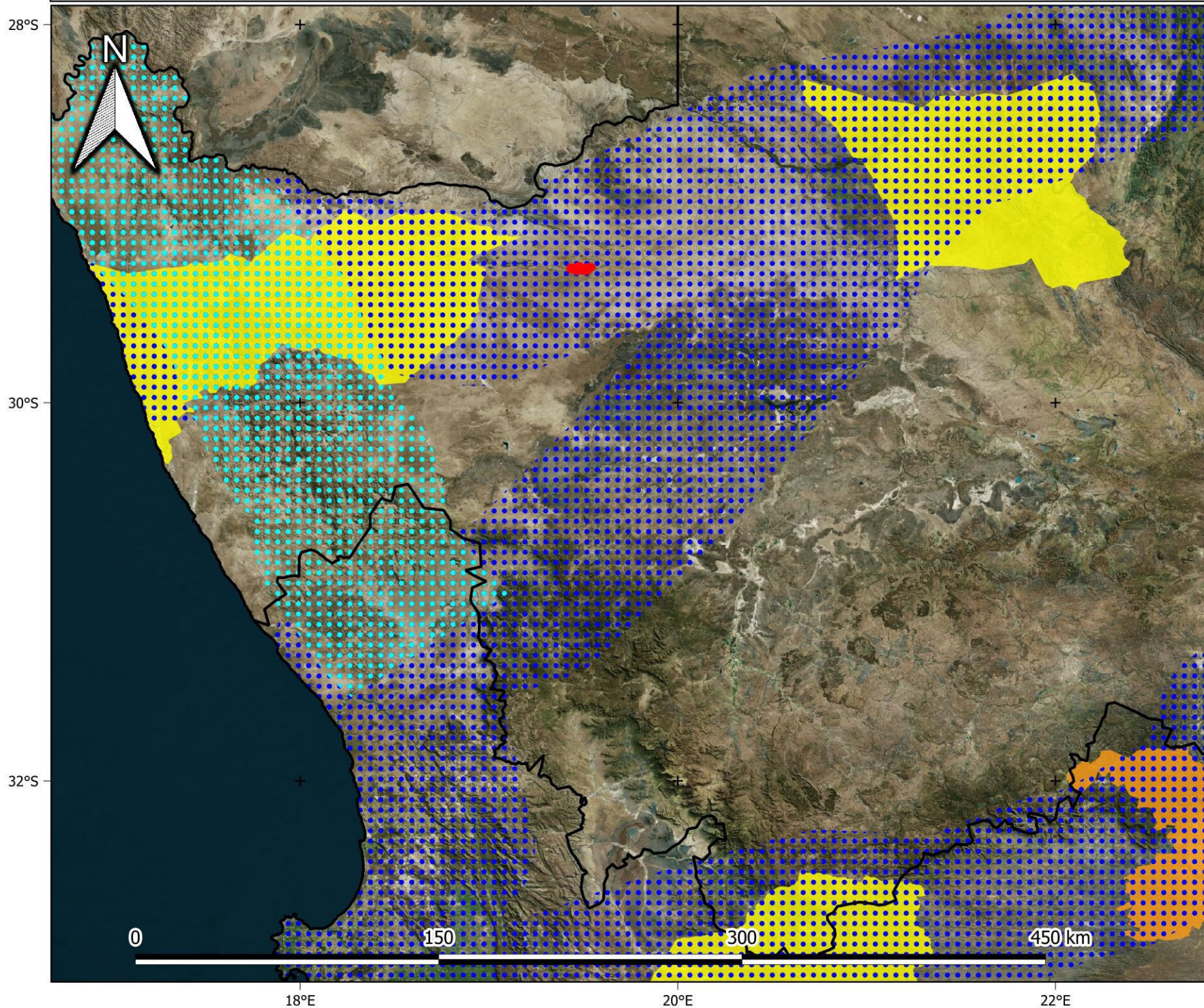
- Turbine layout
- ▭ Farm portions
- Renewable Energy Application database (REEA 2022 Q1)**
 - Approved
 - In process
 - Withdrawn/Lapsed
 - Houmoed WEF (pre-application)

1:750 000

Provincial Context



De Rust: WEF South - REDZ and Energy Corridor

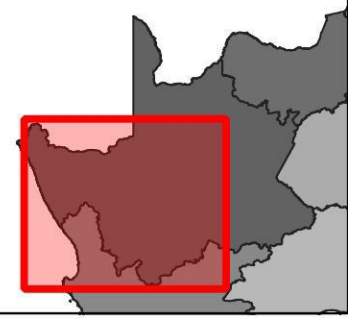


Legend

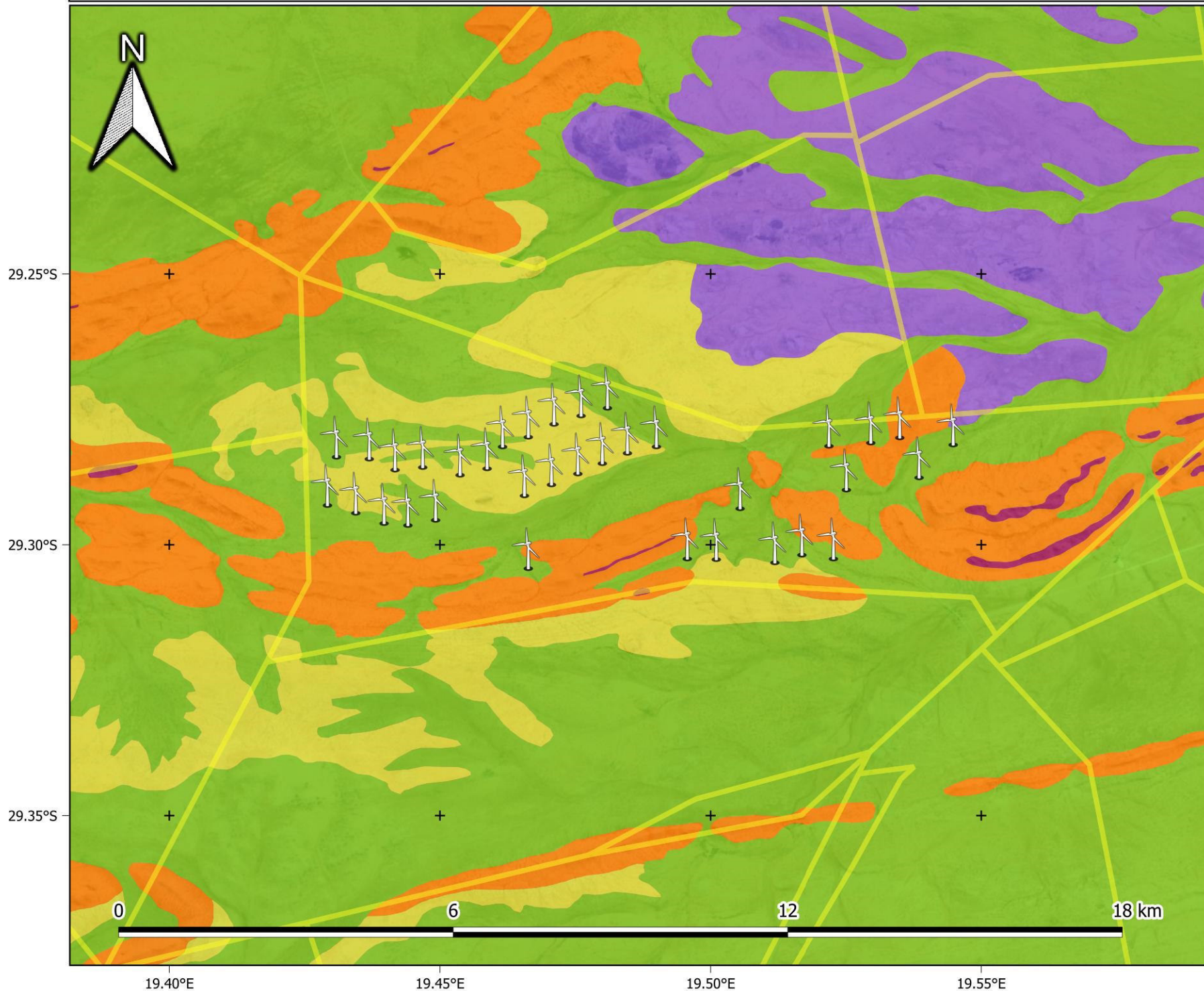
- Turbine layout
- ▭ Provinces
- Strategic transmission corridor
- Expanded transmission corridor
- REDZs phase 2
- REDZs phase 1

1:1 999 801.588035

Provincial Context



De Rust: WEF South - Vegetation



Legend

- Turbine layout
- Farm portions

VegMap (2018)

- Aggeneys Gravel Vygieveld
- Bushmanland Arid Grassland
- Bushmanland Basin Shrubland
- Bushmanland Inselberg Shrubland
- Namaqualand Klipkoppe Shrubland

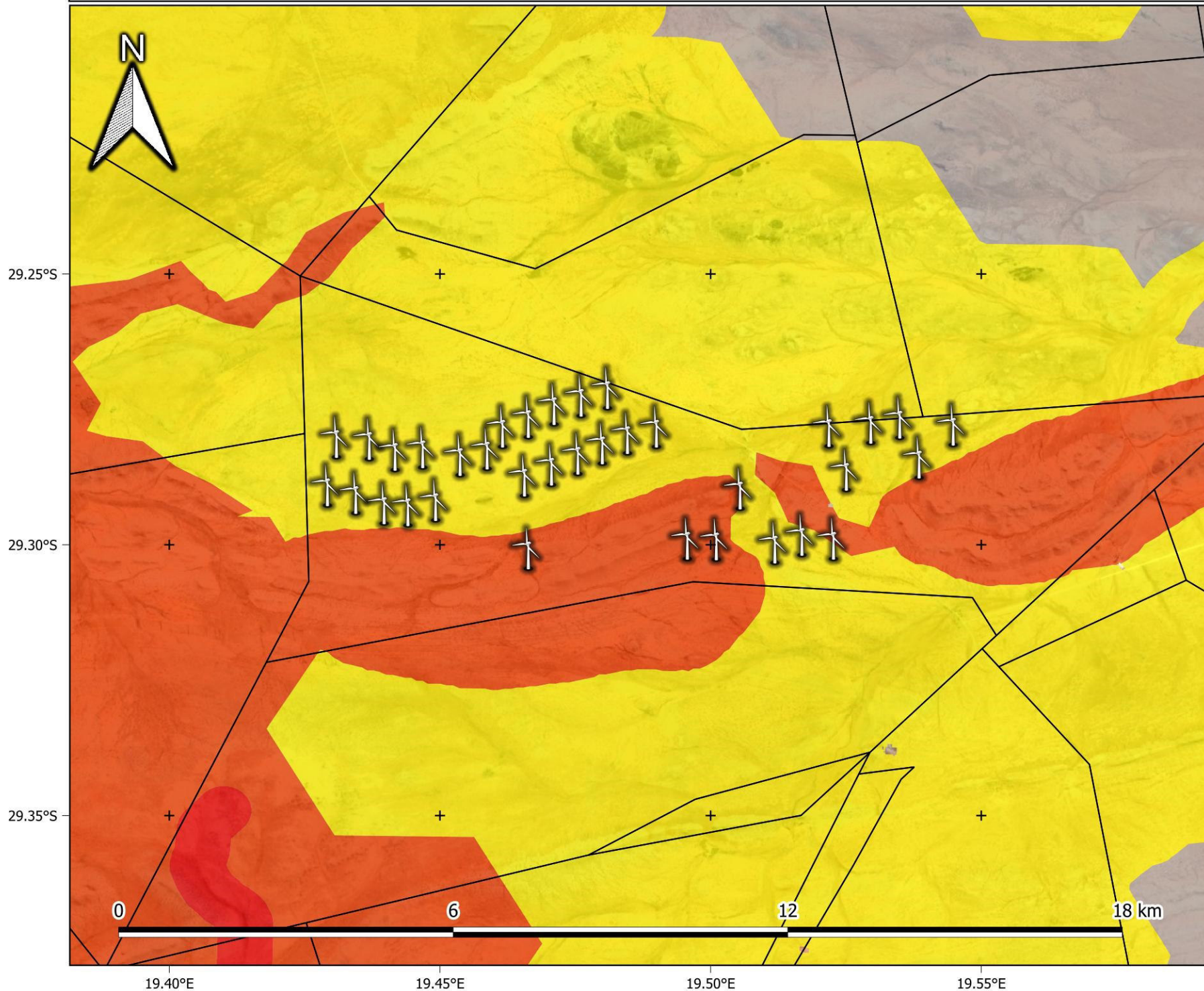
1:70 000

Provincial Context

A map of South Africa showing the provincial boundaries. A green dot is placed in the Northern Cape province to indicate the location of the De Rust wind farm.

EnviroINSIGHT
environmental impact assessments

De Rust: WEF South - Critical Biodiversity Areas



Legend

- Turbine layout
- Farm portions

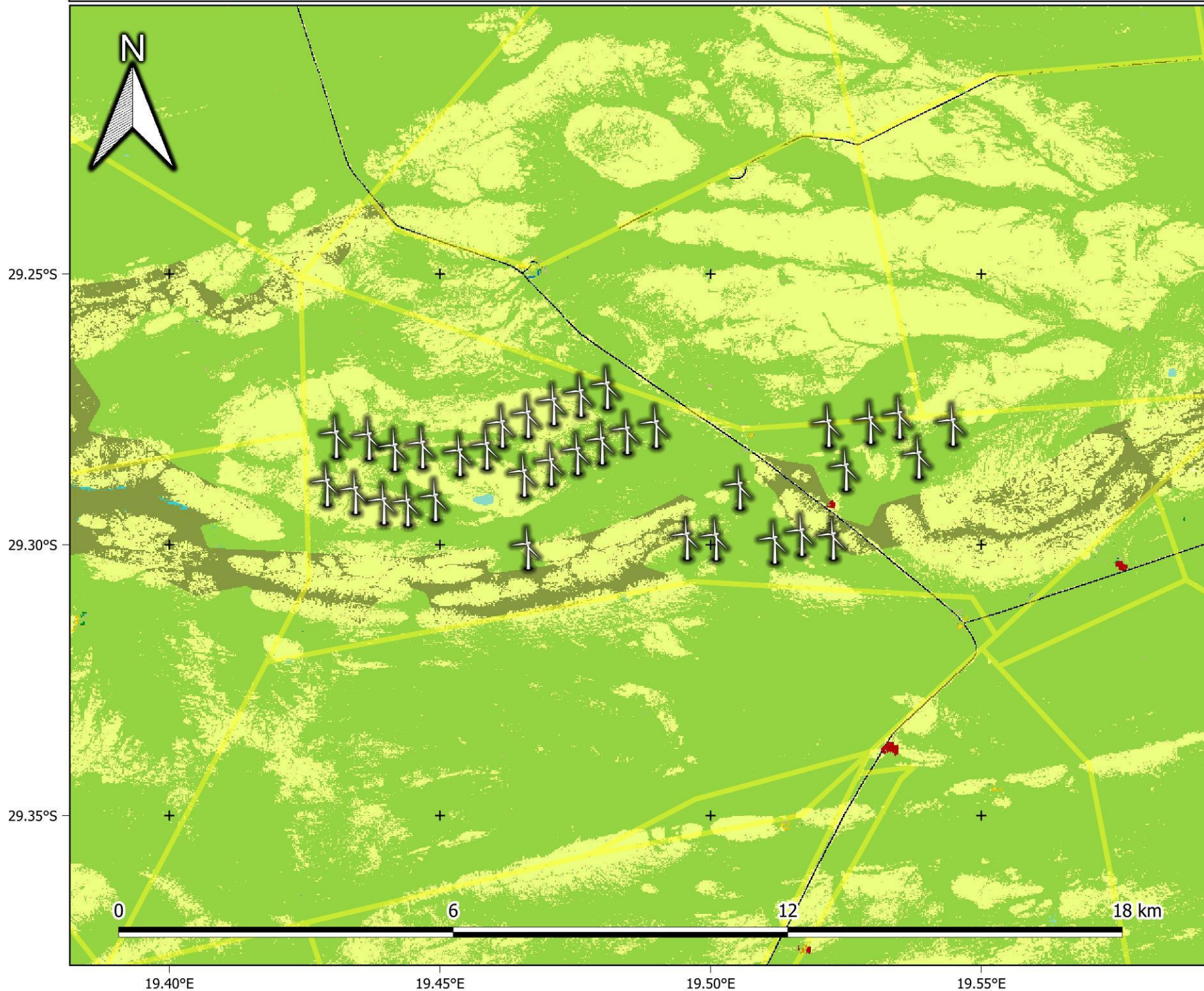
Critical Biodiversity Areas (NC 2018)

- CBA 1
- CBA 2
- ESA
- ONA

1:70 000

Provincial Context

De Rust: WEF South - Land Cover



Legend

- Turbine layout
- Farm portions

National Land Cover (SA NLC 2018)

- Low Shrubland (other regions)
- Low Shrubland (Succulent Karoo)
- Low Shrubland (Nama Karoo)
- Dry Pans
- Bare Riverbed Material
- Bare Ground
- Roads and Rail
- Mines

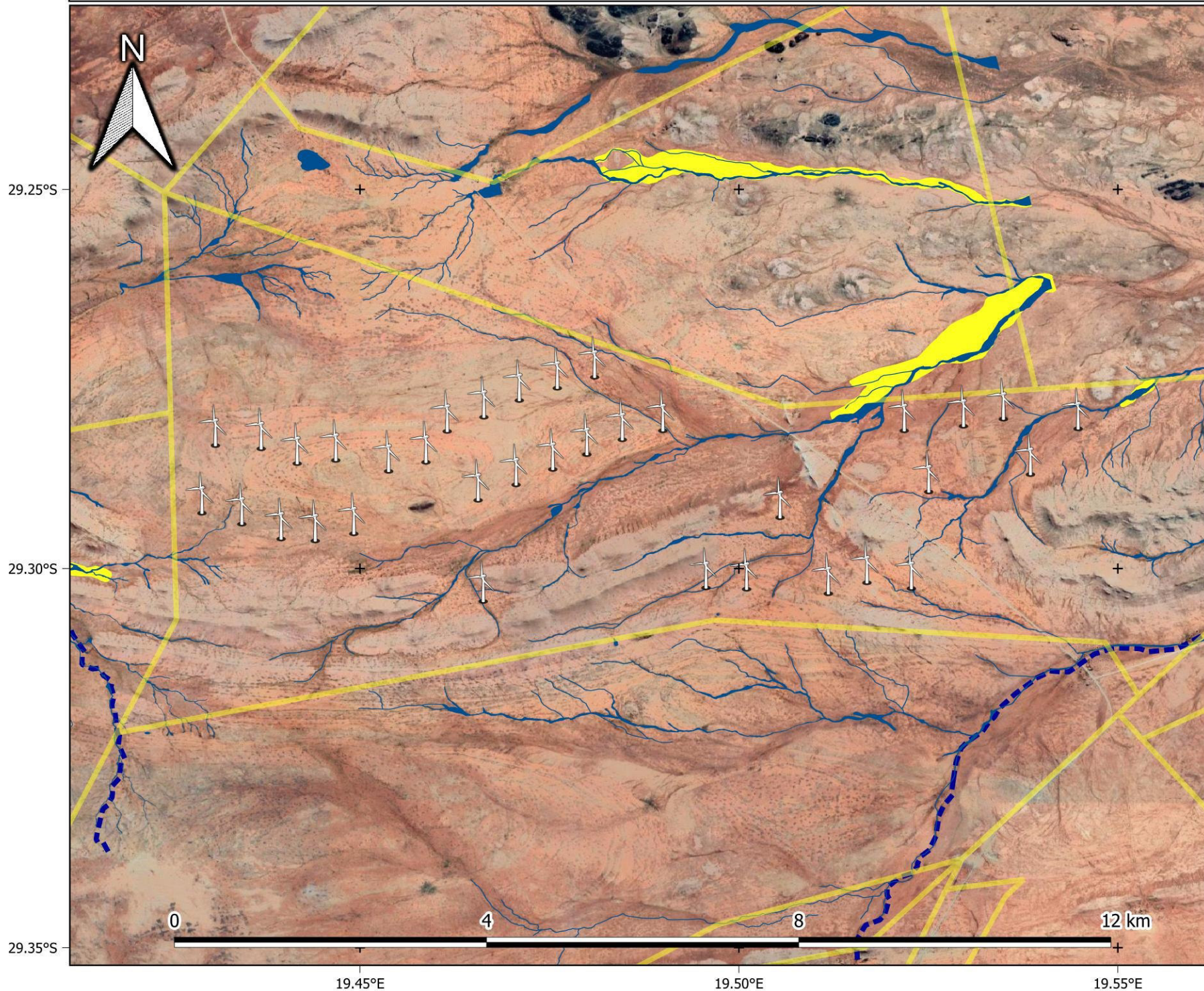
1:70 000

Provincial Context

A map of South Africa with the Western Cape province highlighted in a darker shade. A green dot is placed within the Western Cape province to indicate the specific location of the De Rust Wind Energy Facility.

EnviroINSIGHT
environmental impact assessments

De Rust: WEF South - Hydrology



Legend

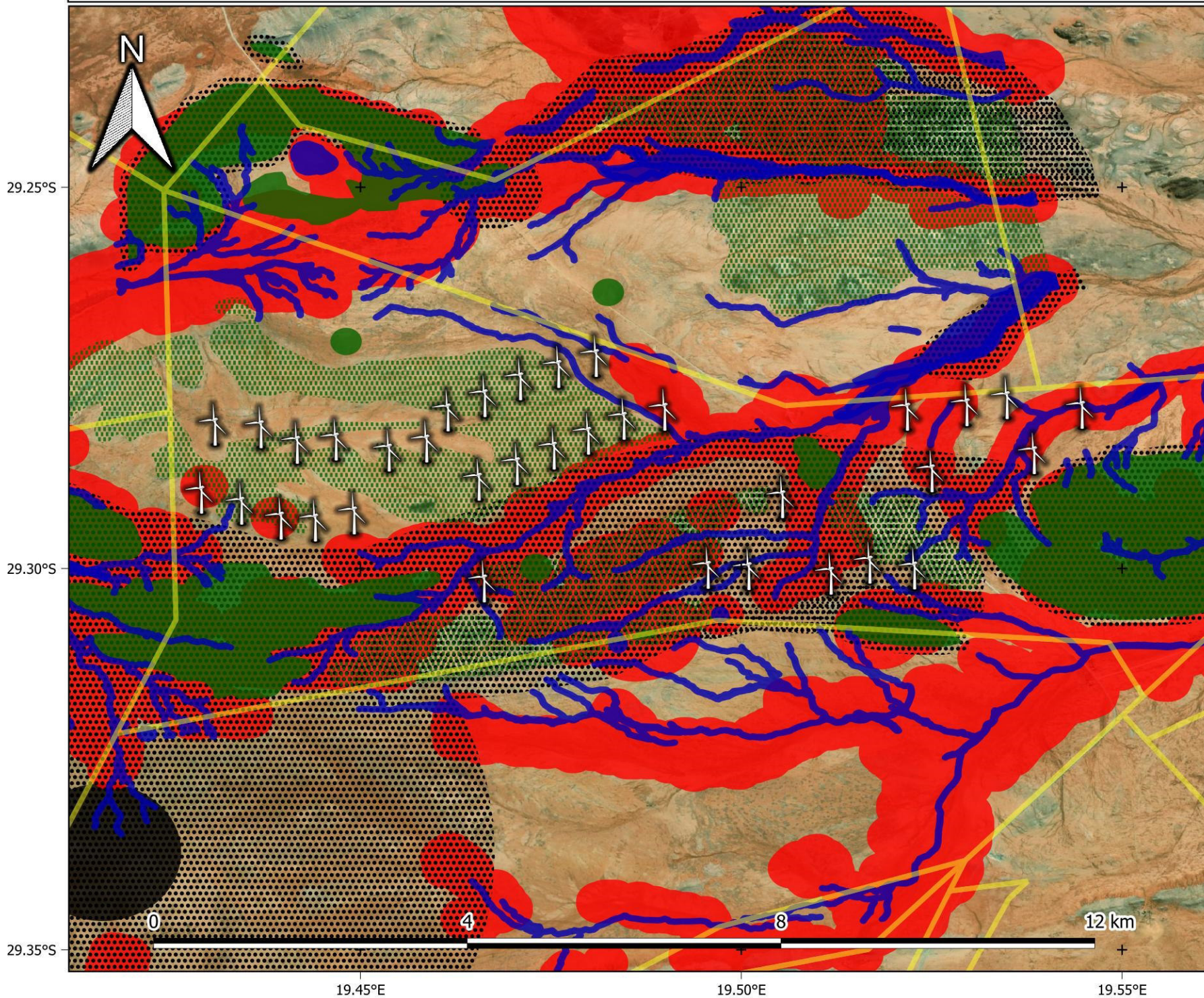
- Turbine layout
- Farm portions
- Aquatic ecologist's delineations**
 - Watercourses
 - Alluvial plains
- NFEPA (2012)**
 - Rivers
 - Wetlands

1:50 000

Provincial Context

Enviro
INSIGHT
environmental impact assessments

De Rust: WEF South - Habitat Sensitivity



Legend

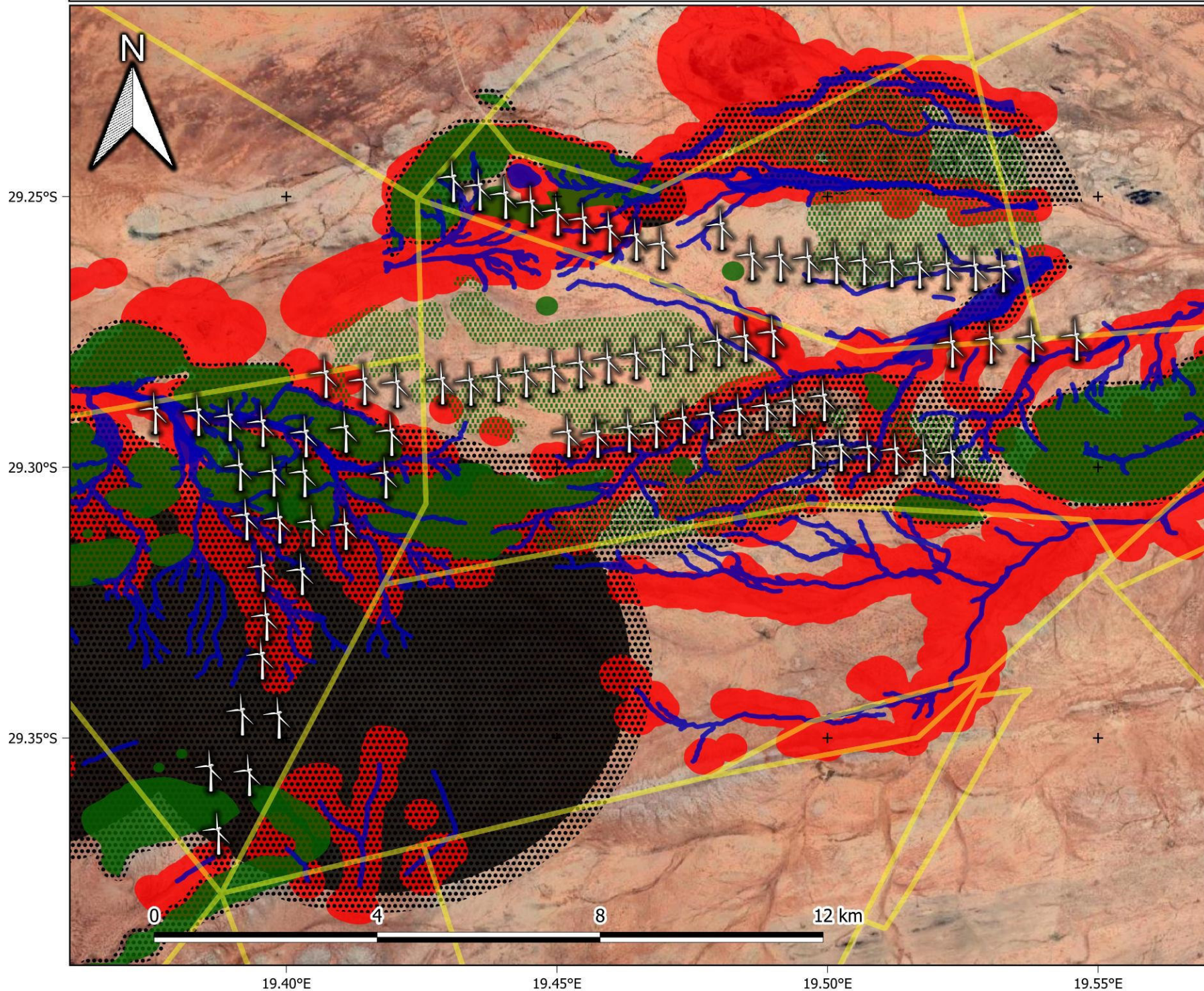
- Turbine layout (alternative 1)
- Farm portions
- Aquatics no-go
- Avifauna no-go
- Avifauna high sensitivity
- Bats no-go
- Terrestrial no-go
- Terrestrial medium sensitivity

1:50 000

Provincial Context



De Rust: WEF - Habitat Sensitivity (Alternative Layout)



Legend

- Turbine layout (alternative 2)
- Farm portions
- Aquatics no-go
- Avifauna no-go
- Avifauna high sensitivity
- Bats no-go
- Terrestrial no-go
- Terrestrial medium sensitivity

1:70 000

Provincial Context

A map of South Africa with a green dot indicating the location of De Rust in the Western Cape province.

EnviroINSIGHT
environmental impact assessments

Appendix A2:

Photographs



De Rust South WEF





