

Appendix A:

Preliminary Mapping and Photographs



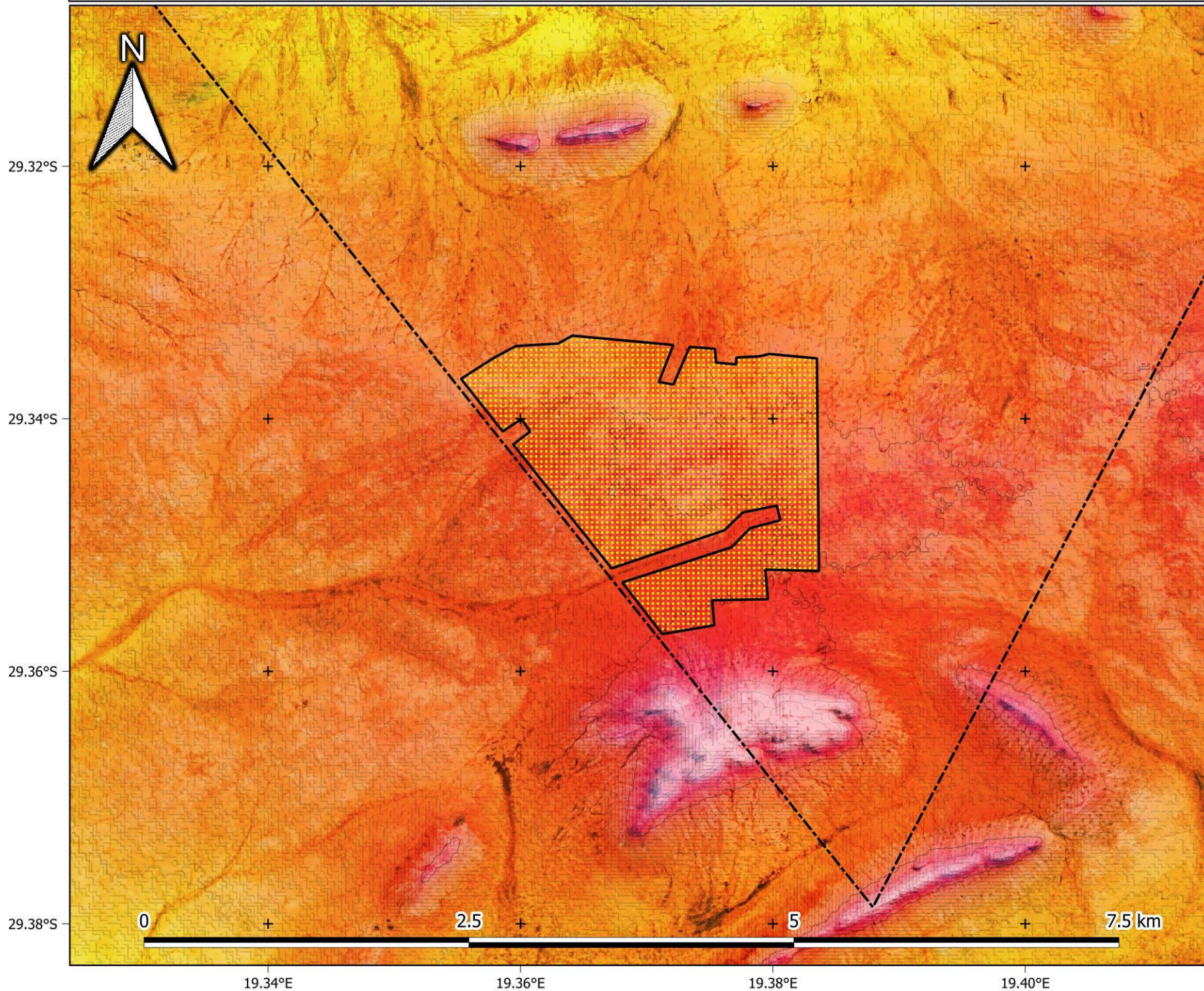
Mobile: Sam - 072 437 1742
Mobile: Luke - 083 784 1997
Email: info@enviro-insight.co.za
Website: www.enviro-insight.co.za

Appendix A1:

Preliminary Mapping



De Rust: Solar PV1 - Topography



Legend

- Solar PV area
- Farm portion

Farm portions

Contours

- 10 m
- 50 m

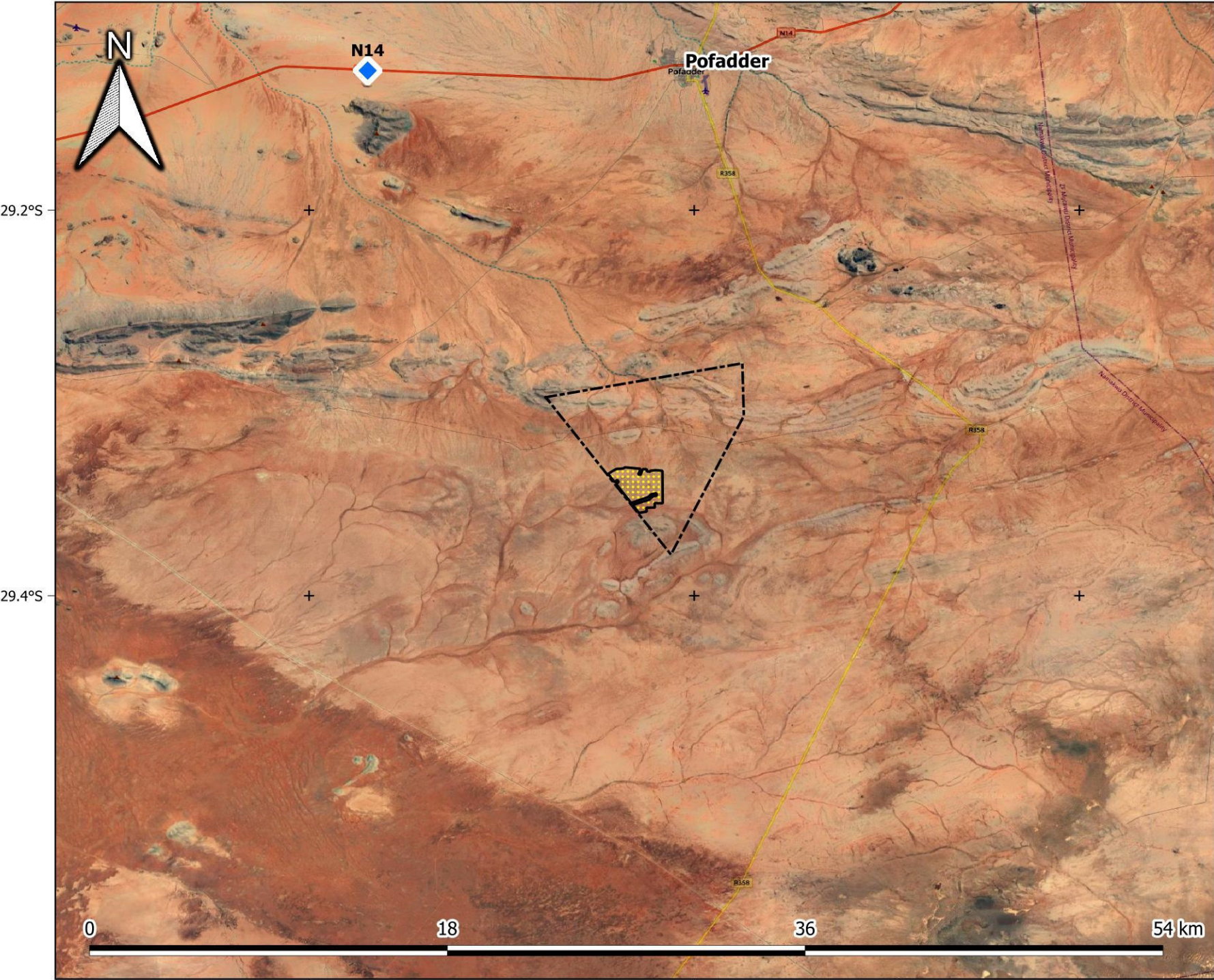
Elevation (masl)

- 950
- 1000
- 1022
- 1046
- 1077
- 1111
- 1130

1:30 000



De Rust: Solar PV1 - Aerial

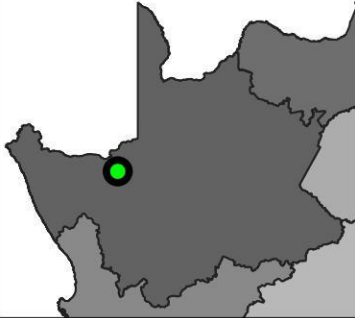


Legend

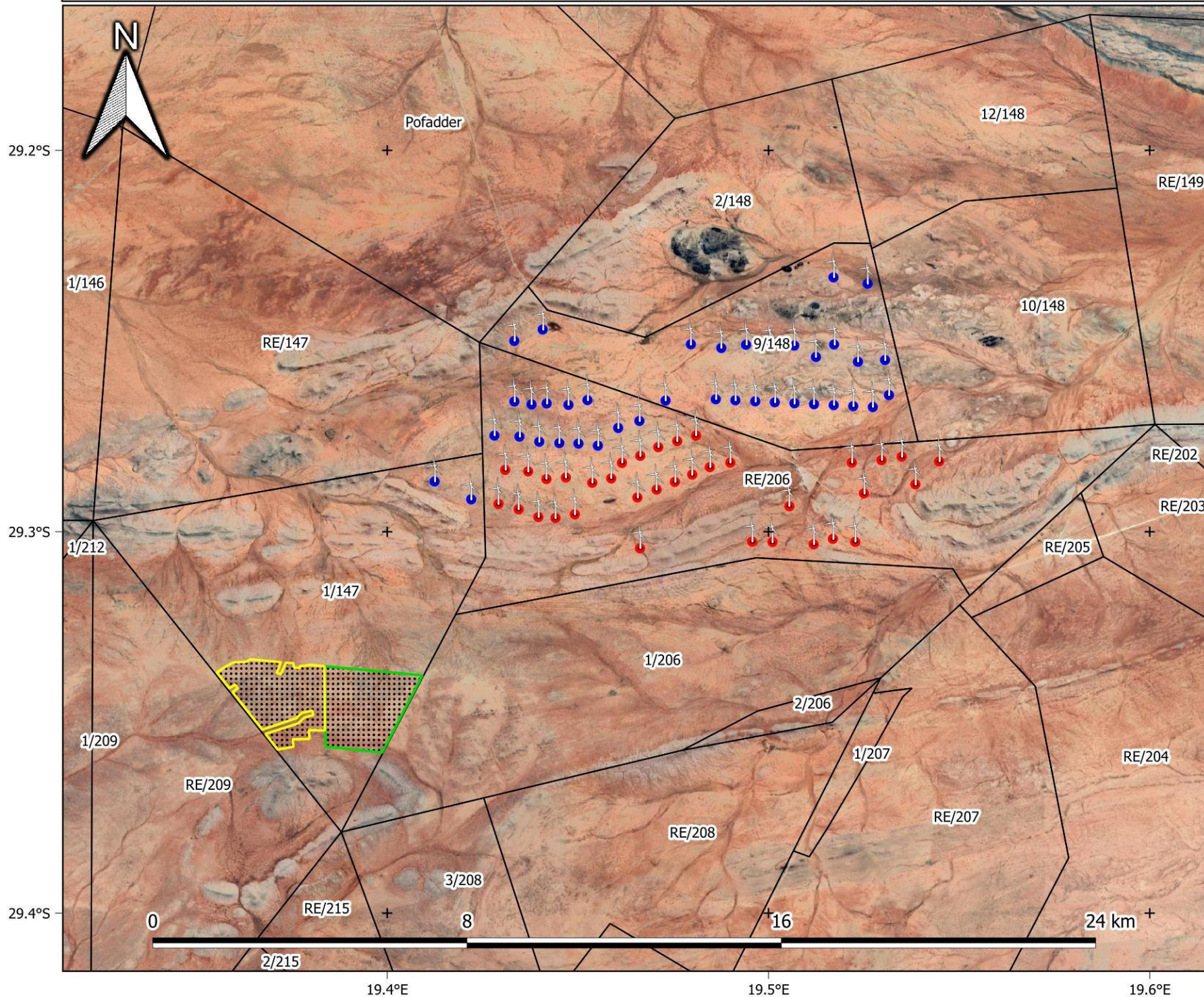
-  Solar PV1 area (alternative 1)
-  Farm portion

1:200 000

Provincial Context



De Rust: combined projects and farm portions (alternative 1)



Legend

□ Farm portions

Turbines

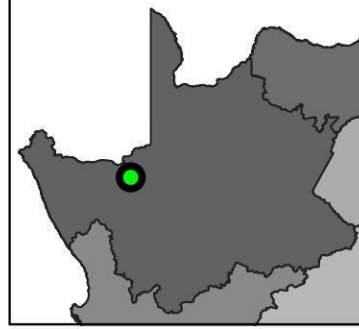
- North WEF
- South WEF

Solar

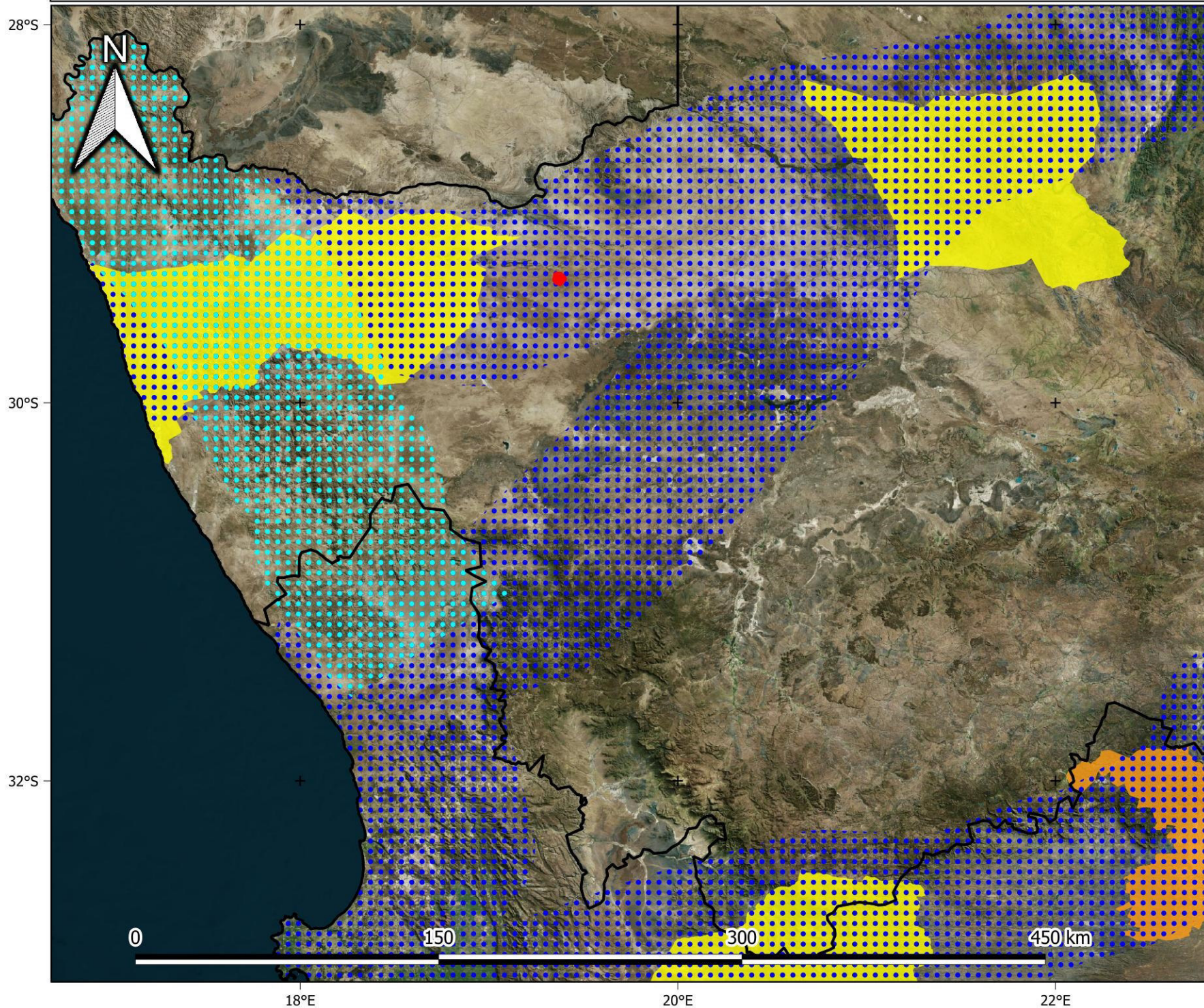
- Solar PV1
- Solar PV2

1:100 000

Provincial Context



De Rust: Solar PV1 - REDZ and Energy Corridor

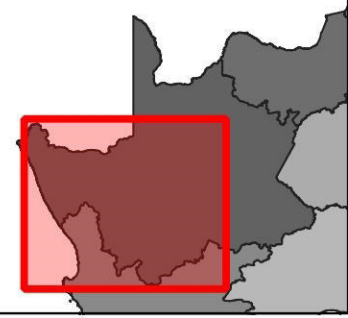


Legend

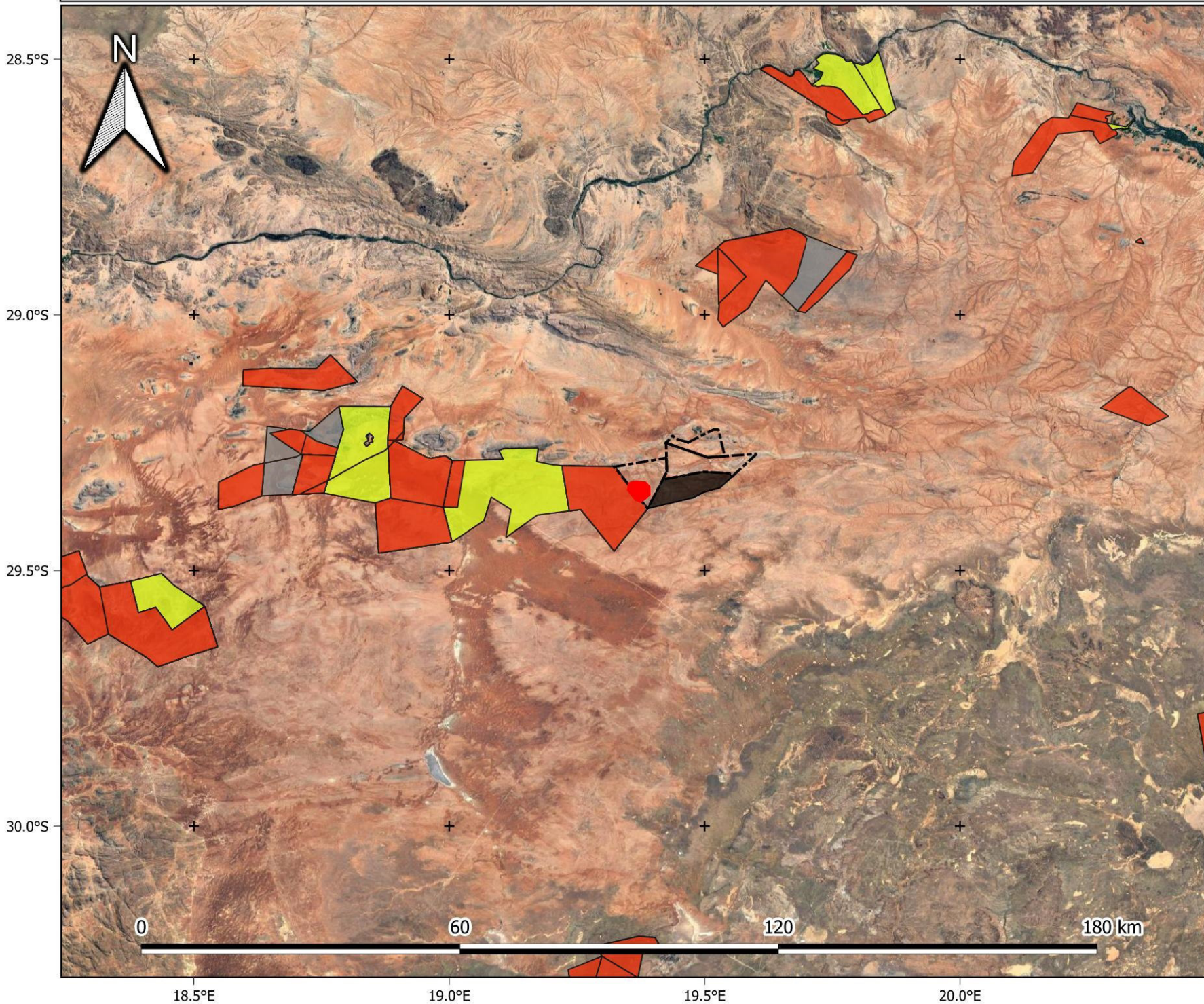
- Solar PV area
- Provinces
- Strategic transmission corridor
- Expanded transmission corridor
- REDZs phase 2
- REDZs phase 1

1:2 000 000

Provincial Context



De Rust: Solar PV1 - Renewable energy developments in proximity

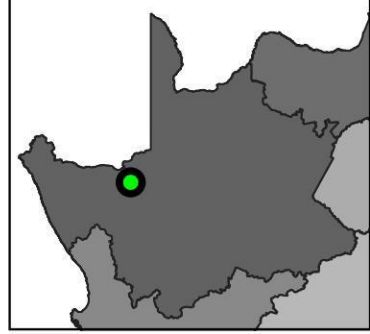


Legend

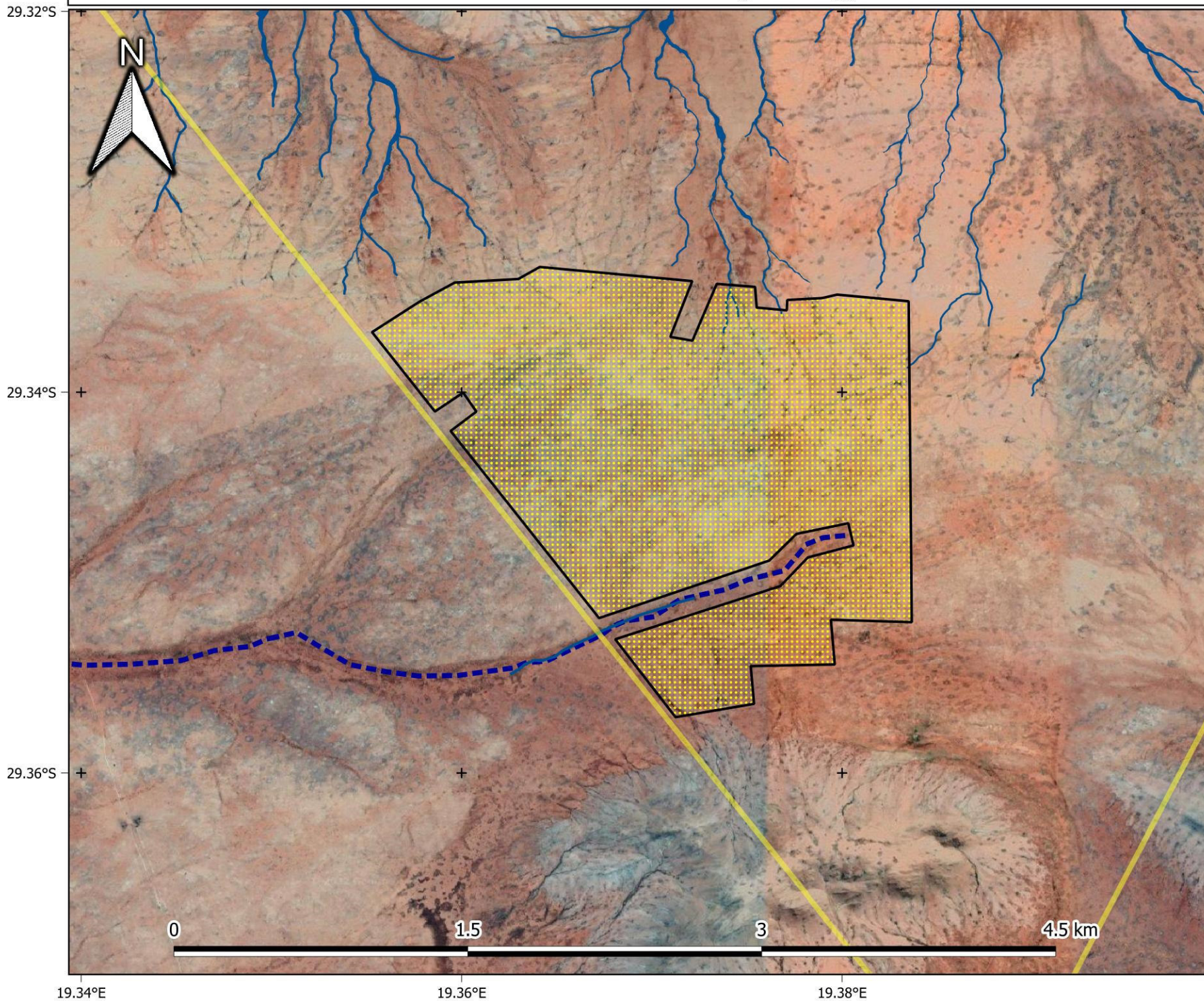
- Solar PV areas
- Farm portions
- Renewable Energy Application database (REEA 2022 Q1)**
 - Approved
 - In process
 - Withdrawn/Lapsed
 - Houmoed WEF (pre-application)

1:750 000

Provincial Context



De Rust: Solar PV1 - Hydrology



Legend

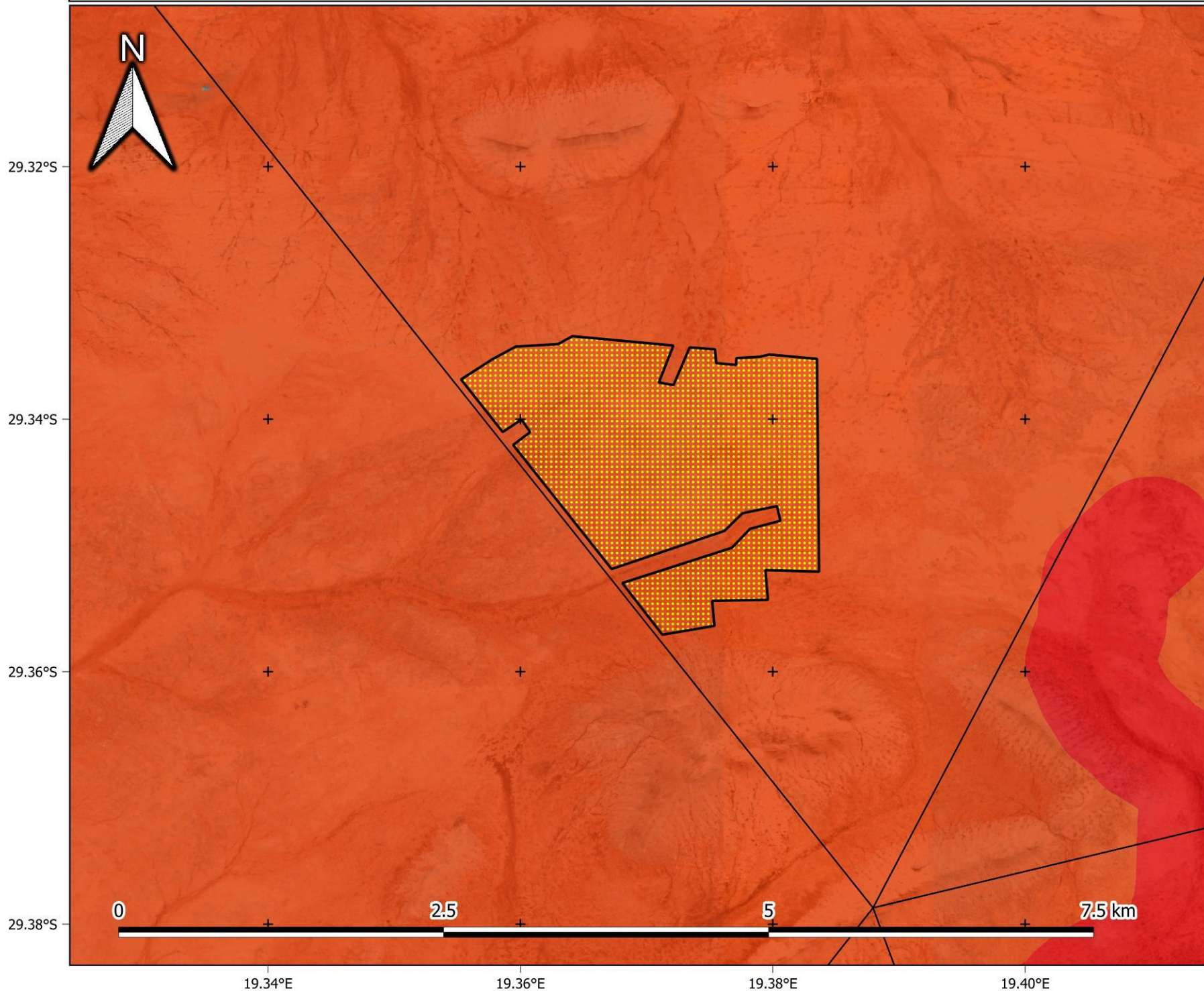
- Solar PV area
- Farm portions
- Aquatic ecologist's delineations**
 - Watercourses
- NFEPA (2012)**
 - Rivers
 - Wetlands

1:20 000

Provincial Context



De Rust: Solar PV1 - Critical Biodiversity Areas

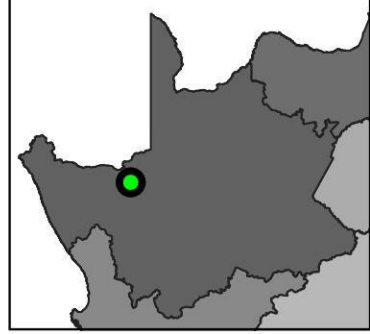


Legend

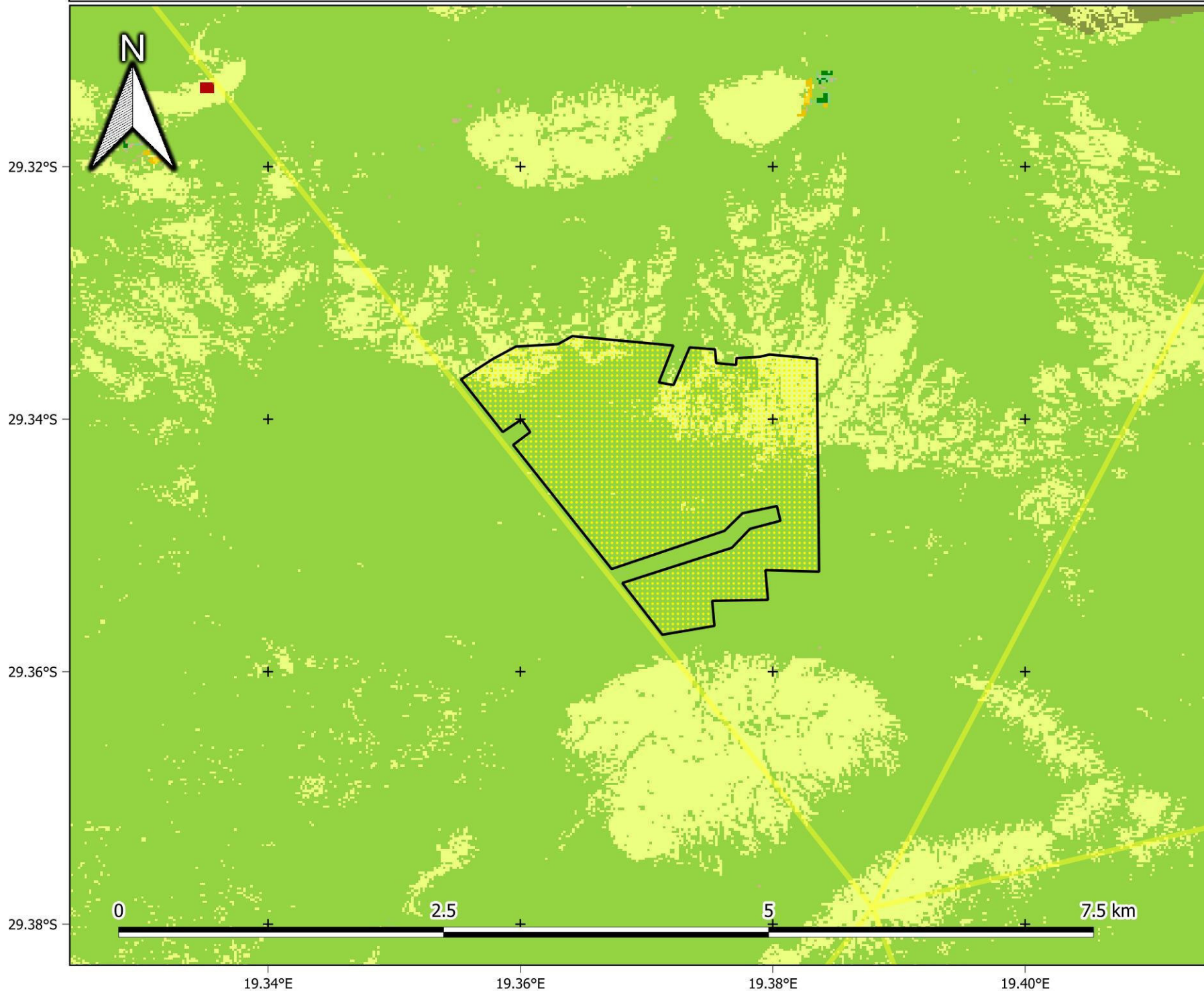
- Solar PV area
- Farm portions
- Critical Biodiversity Areas (NC 2018)**
 - CBA 1
 - CBA 2
 - ESA
 - ONA

1:30 000

Provincial Context



De Rust: Solar PV1 - Land Cover

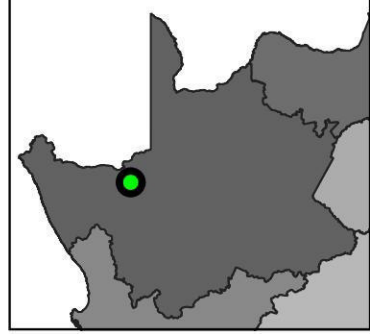


Legend

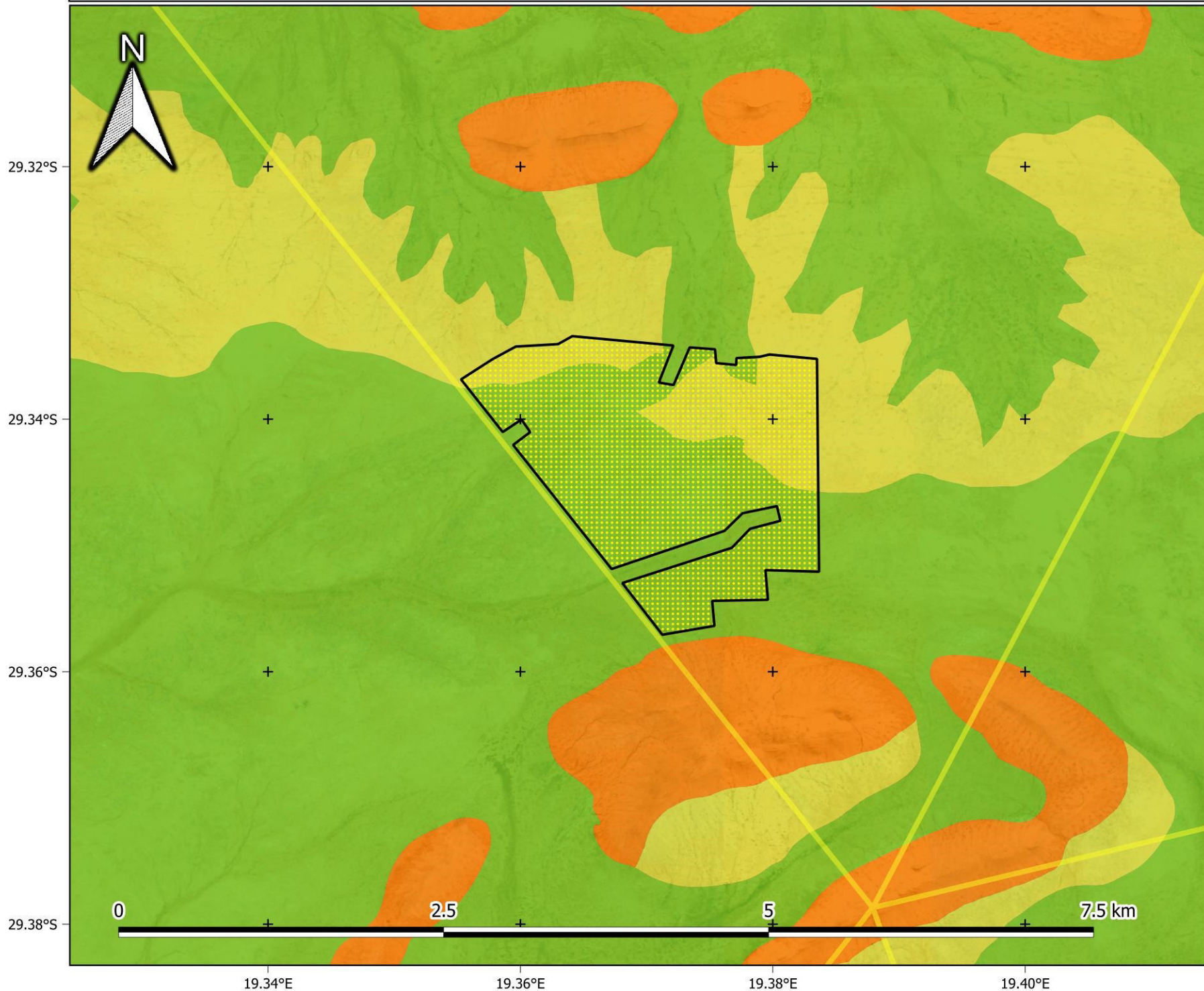
- Solar PV area
- Farm portions
- National Land Cover (SA NLC 2018)**
 - Low Shrubland (other regions)
 - Low Shrubland (Succulent Karoo)
 - Low Shrubland (Nama Karoo)
 - Dry Pans
 - Bare Riverbed Material
 - Bare Ground
 - Roads and Rail
 - Mines

1:30 000

Provincial Context



De Rust: Solar PV1 - Vegetation



Legend

- Solar PV area
- Farm portions

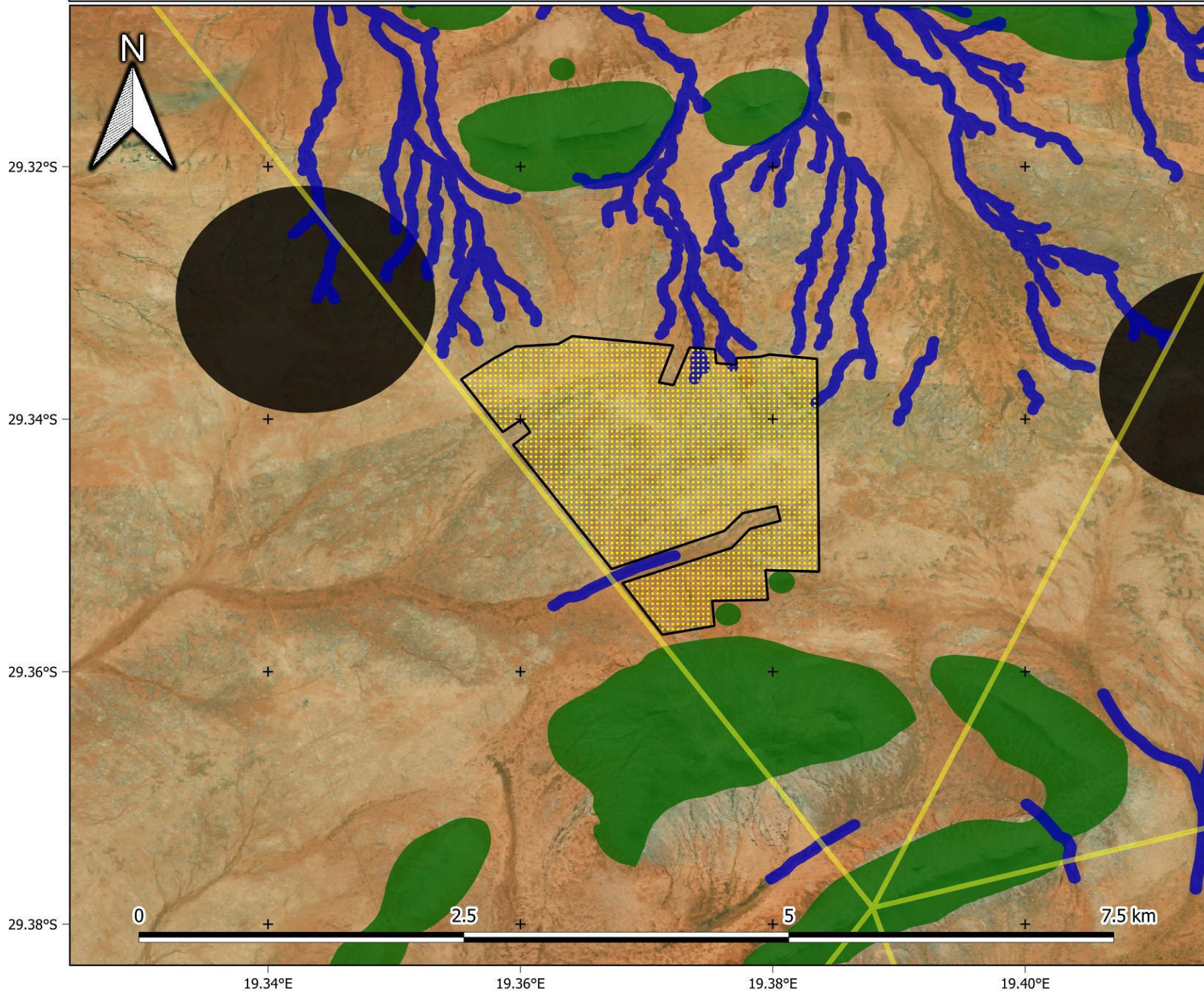
VegMap (2018)

- Aggeney's Gravel Vygieveld
- Bushmanland Arid Grassland
- Bushmanland Inselberg Shrubland
- Namaqualand Klipkoppe Shrubland

1:30 000

Provincial Context

De Rust: Solar PV1 - Habitat Sensitivity



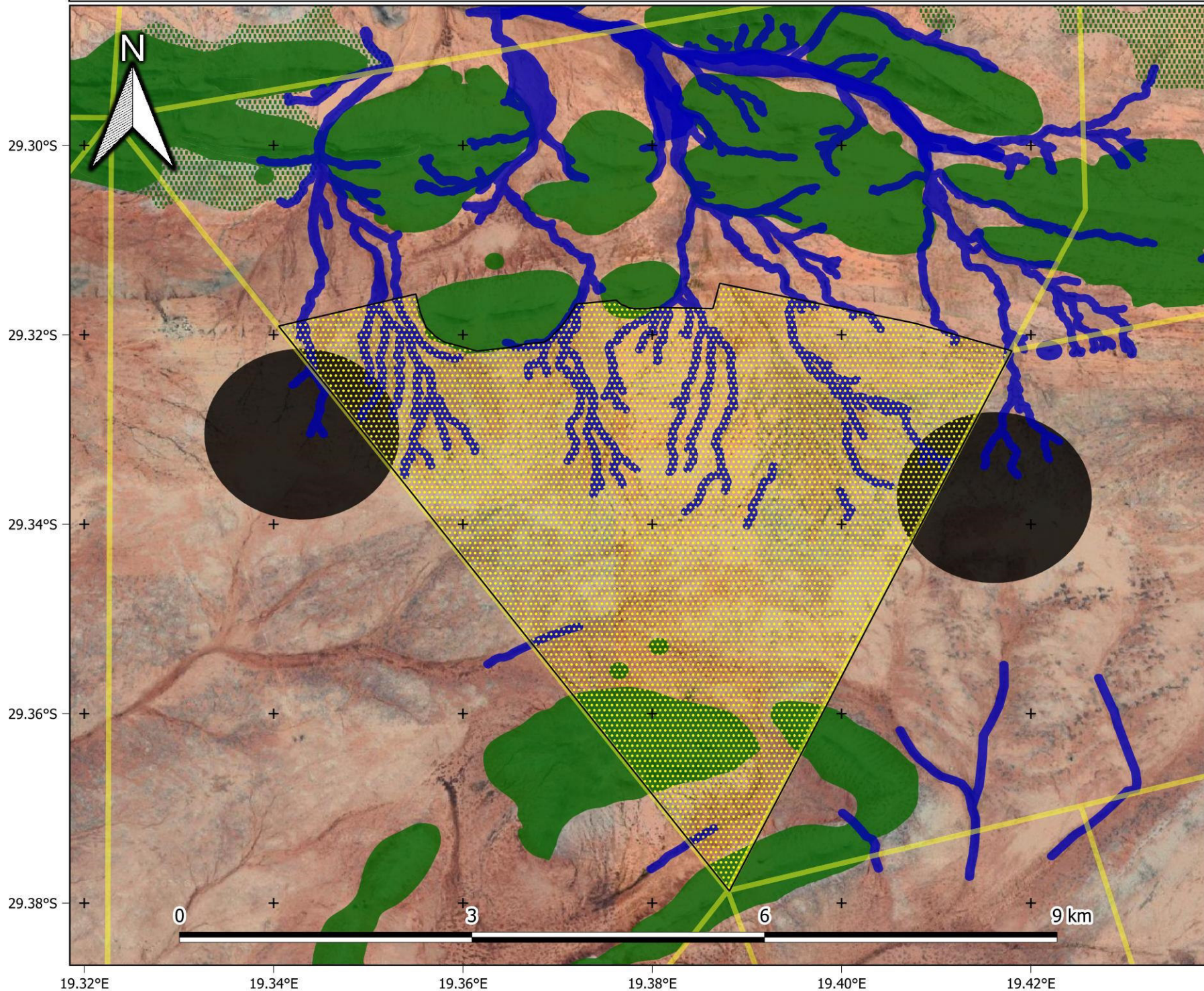
Legend

- Solar PV area (alternative 1)
- Farm portions
- Aquatics no-go
- Avifauna no-go
- Terrestrial no-go
- Terrestrial medium sensitivity

1:30 000

Provincial Context

De Rust: Solar PV - Habitat Sensitivity (Alternative Layout)

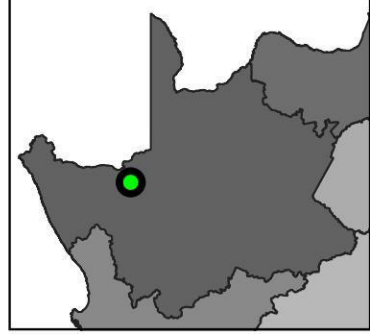


Legend

- Solar PV area (alternative 2)
- Farm portions
- Aquatics no-go
- Avifauna no-go
- Terrestrial no-go
- Terrestrial medium sensitivity

1:40 000

Provincial Context



Appendix A2:

Photographs



De Rust Solar PV1 and PV 2





