
Appendix A:

Preliminary Mapping and Photographs



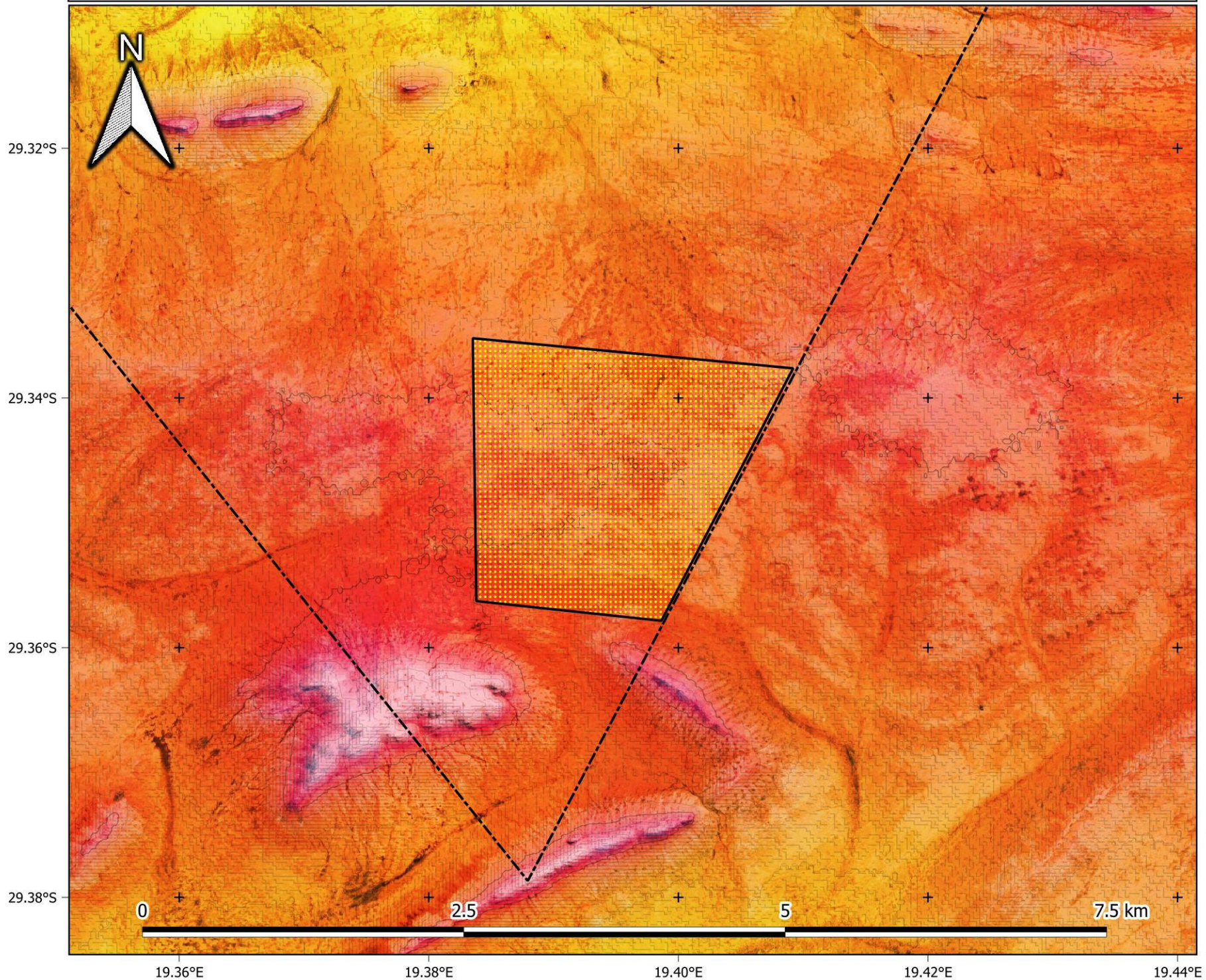
Mobile: Sam - 072 437 1742
Mobile: Luke - 083 784 1997
Email: info@enviro-insight.co.za
Website: www.enviro-insight.co.za

Appendix A1:

Preliminary Mapping



De Rust: Solar PV2 - Topography



Legend

- Solar PV area
- Farm portion

Farm portions

Contours

- 10 m
- 50 m

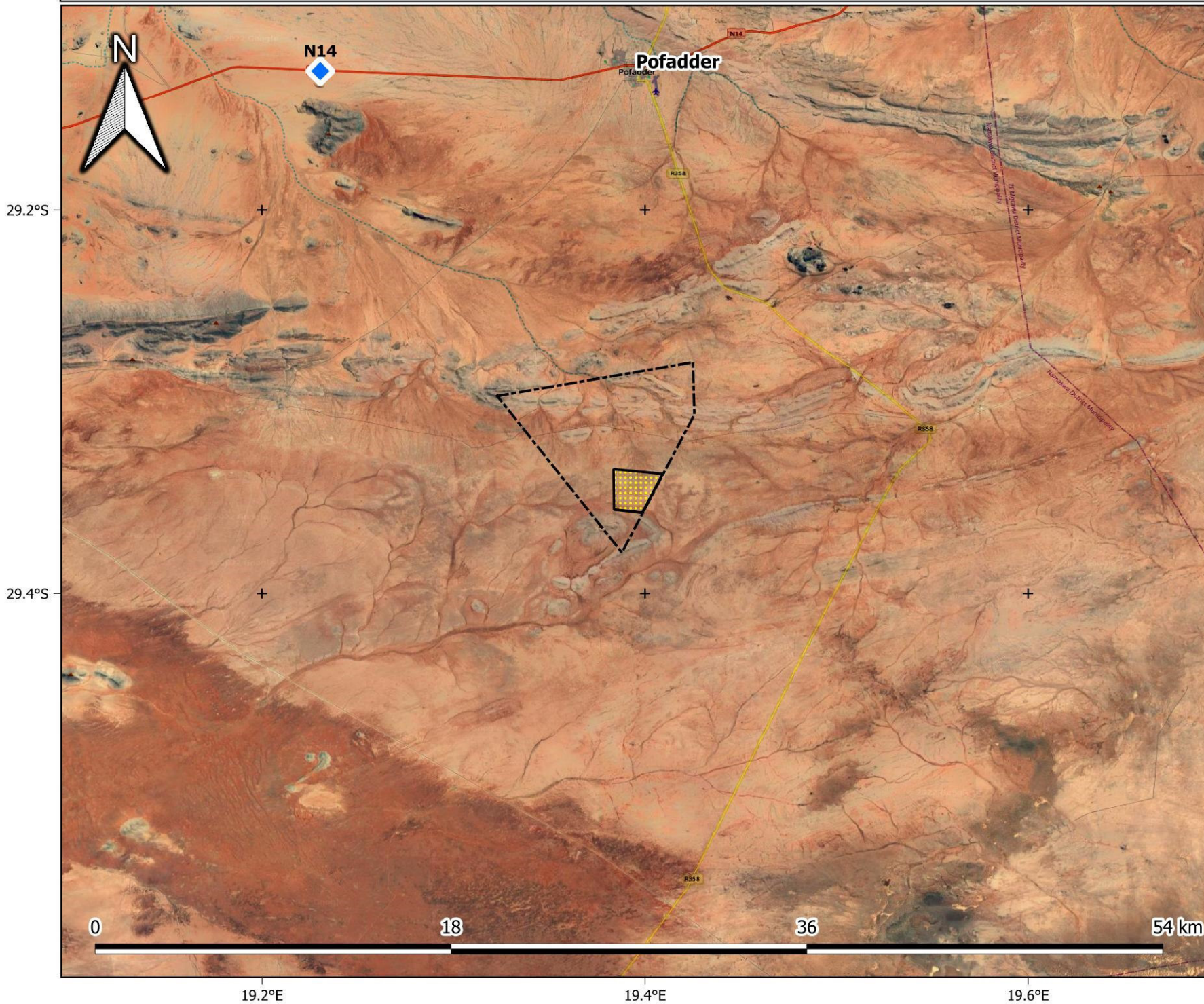
Elevation (masl)

- 950
- 1000
- 1022
- 1046
- 1077
- 1111
- 1130

1:30 000



De Rust: Solar PV2 - Aerial



Legend

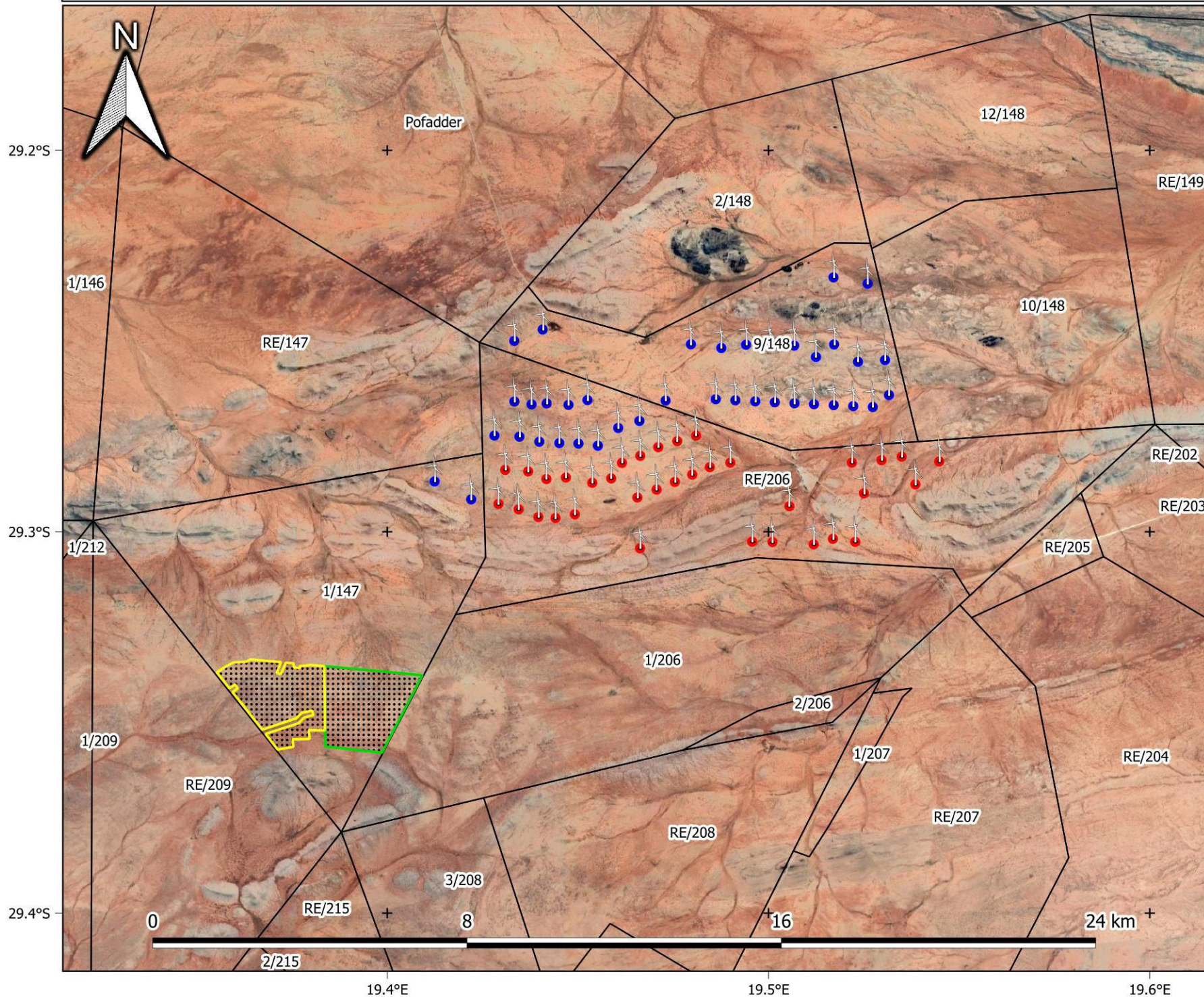
-  Solar PV2 area (alternative 1)
-  Farm portion

1:200 000

Provincial Context



De Rust: combined projects and farm portions (alternative 1)



Legend

- Farm portions
- Turbines**
 - North WEF
 - South WEF
- Solar**
 - Solar PV1
 - Solar PV2

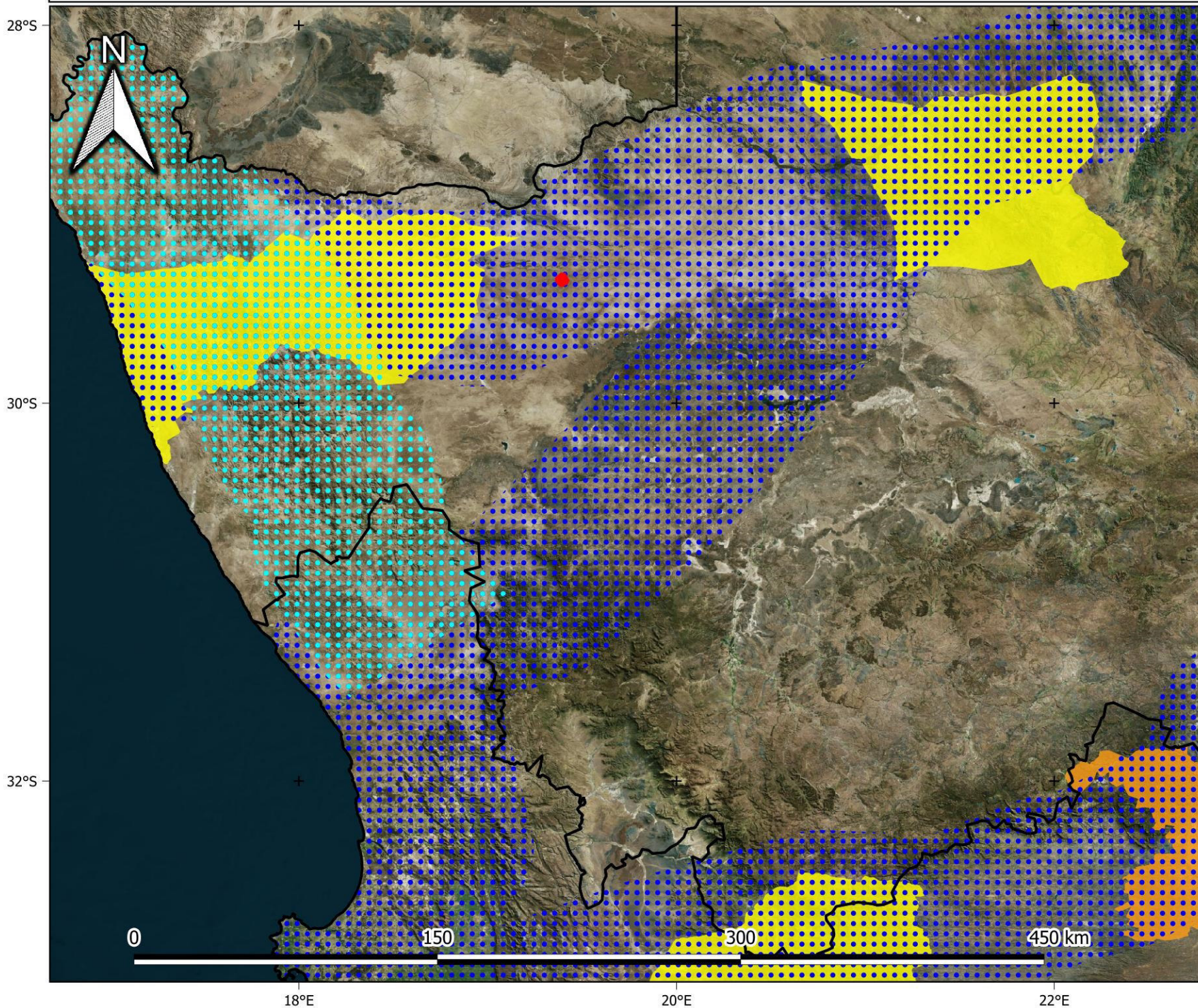
1:100 000

Provincial Context

This inset map shows the outline of South Africa, with the Western Cape province highlighted in a darker shade. A green dot is placed within the Western Cape province to indicate the specific location of the De Rust project area.

The logo for EnviroINSIGHT, featuring the word 'Enviro' in green and 'INSIGHT' in blue, with the tagline 'environmental impact assessments' in smaller green text below.

De Rust: Solar PV2 - REDZ and Energy Corridor

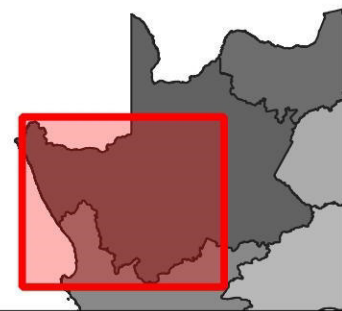


Legend

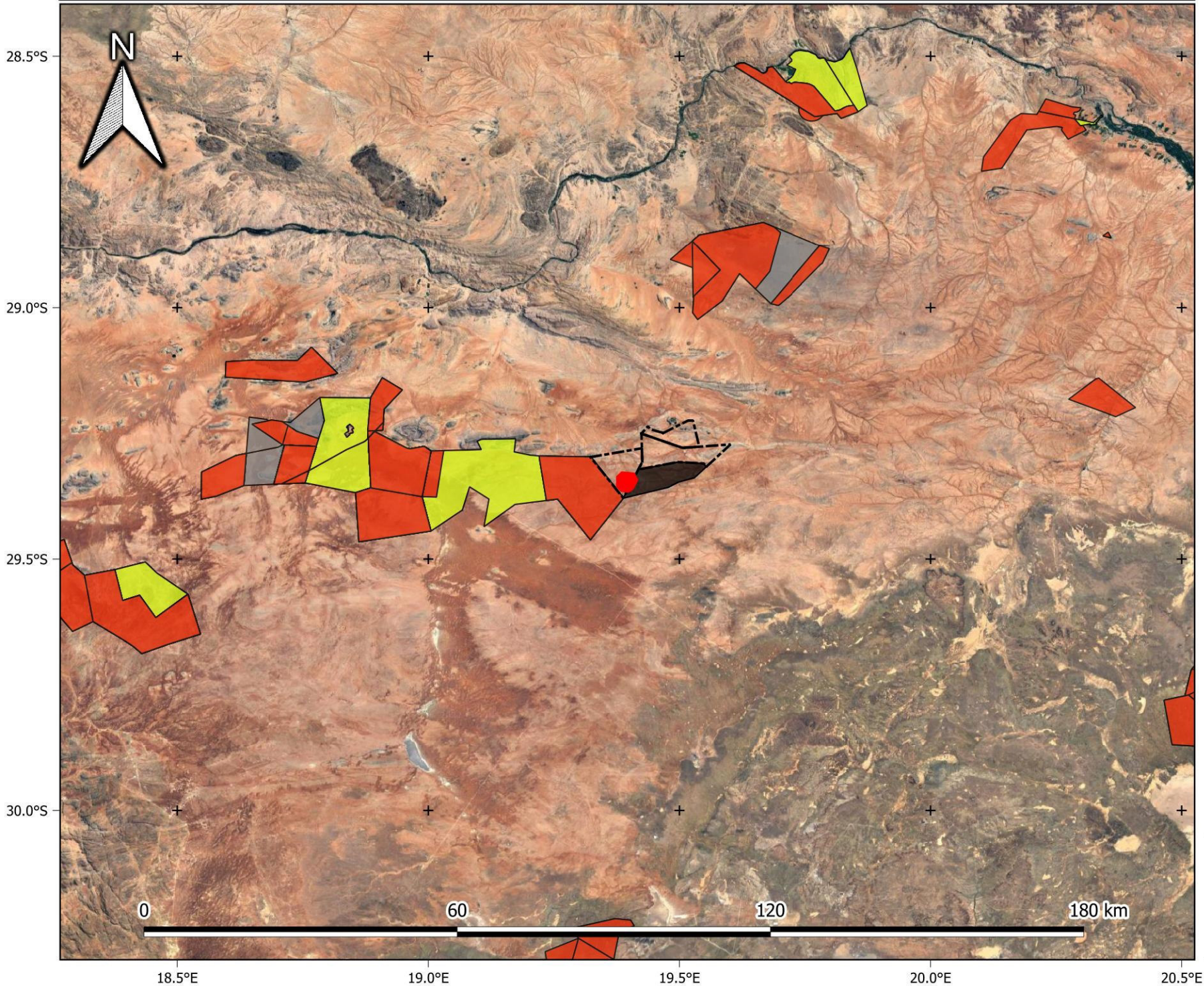
- Solar PV area
- Provinces
- Strategic transmission corridor
- Expanded transmission corridor
- REDZs phase 2
- REDZs phase 1

1:2 000 000

Provincial Context



De Rust: Solar PV2 - Renewable energy developments in proximity



Legend

- Solar PV areas
- Farm portions
- Renewable Energy Application database (REEA 2022 Q1)**
 - Approved
 - In process
 - Withdrawn/Lapsed
 - Houmoed WEF (pre-application)

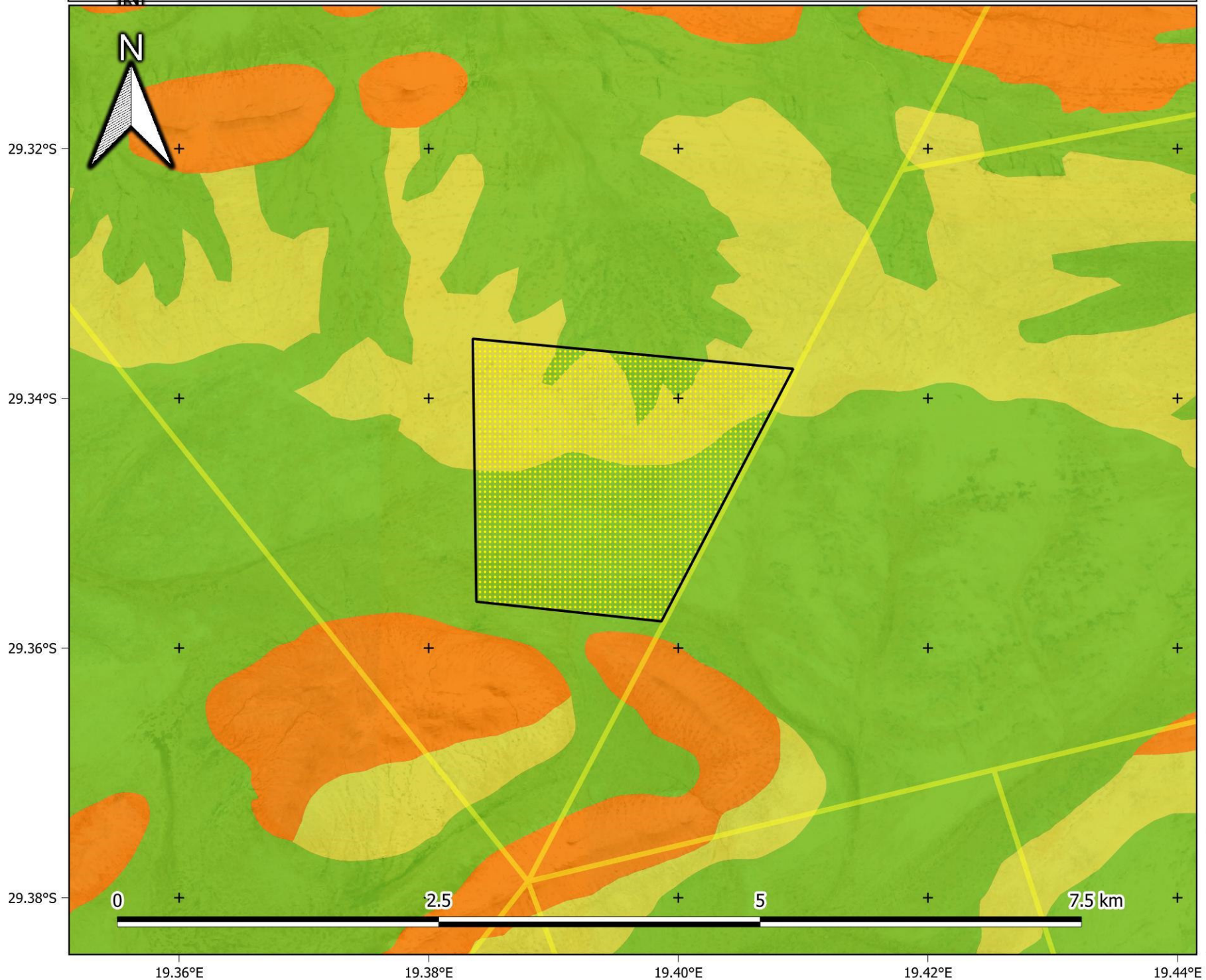
1:750 000

Provincial Context

A map of South Africa with the Western Cape province highlighted in a darker shade. A green dot is placed in the western part of the province, indicating the location of De Rust.

EnviroINSIGHT
environmental impact assessments

De Rust: Solar PV2 - Vegetation



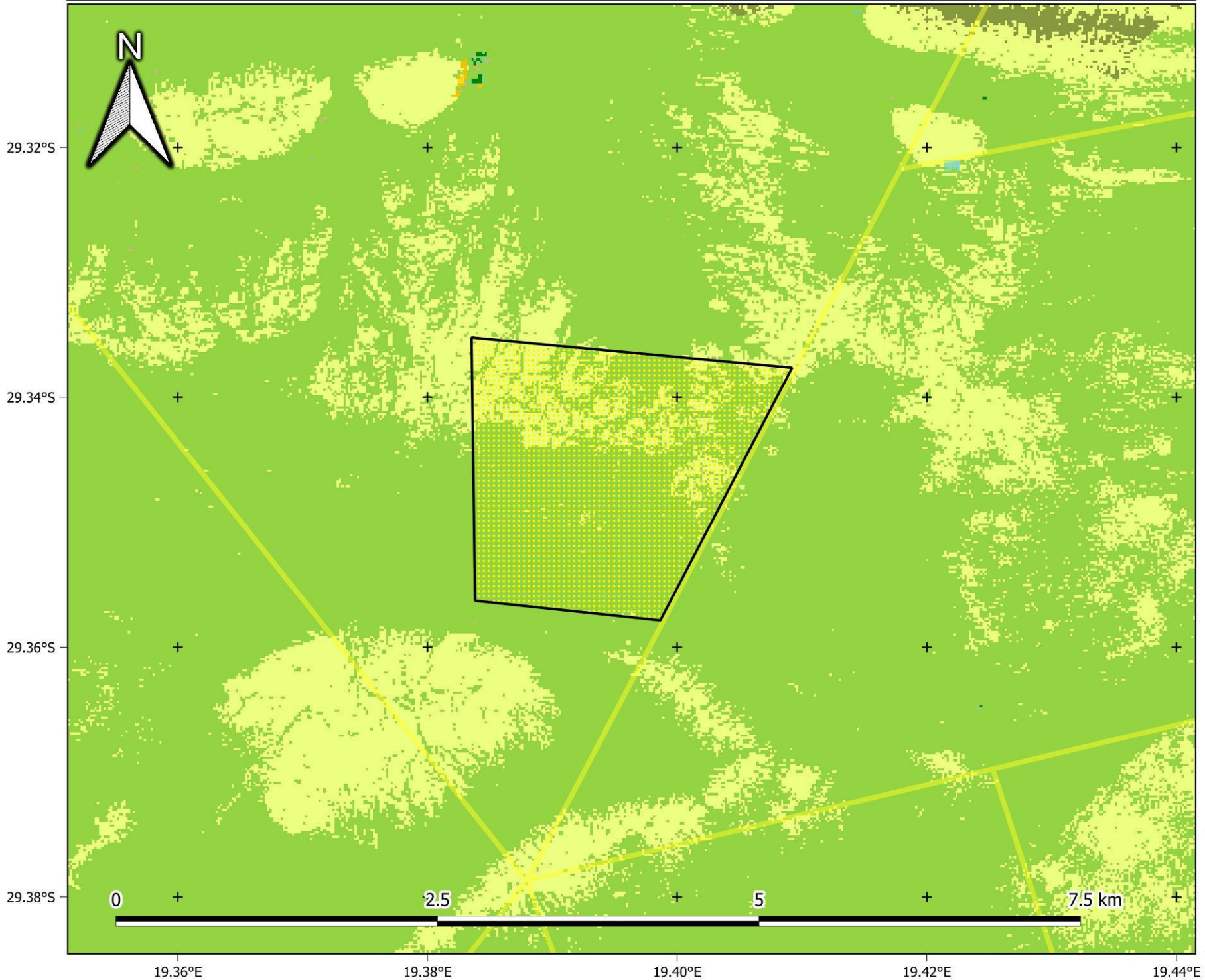
Legend

- Solar PV area
- Farm portions
- VegMap (2018)**
 - Aggeneys Gravel Vygieveld
 - Bushmanland Arid Grassland
 - Bushmanland Inselberg Shrubland

1:30 000

Provincial Context

De Rust: Solar PV2 - Land Cover



Legend

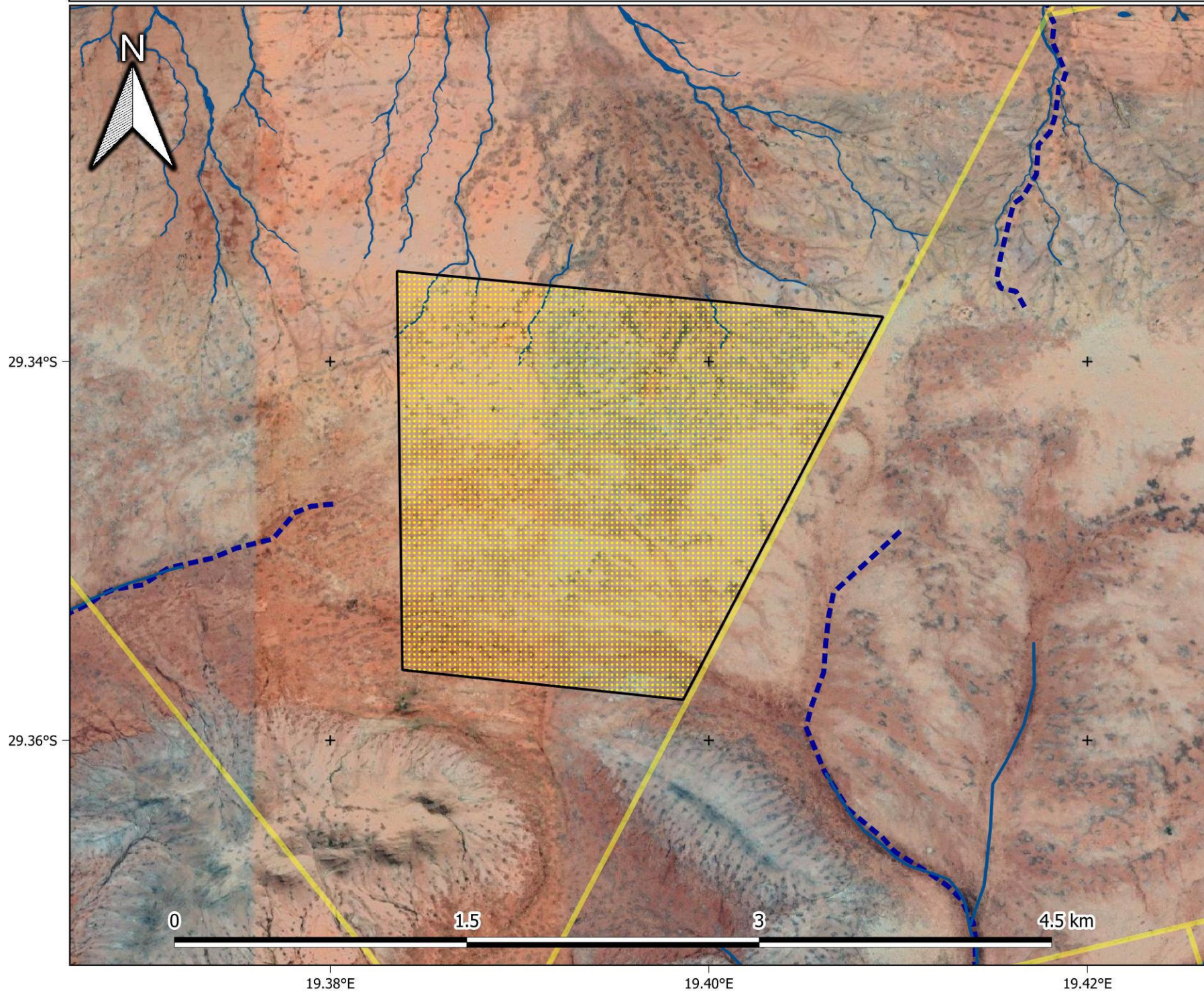
- Solar PV area
- Farm portions
- National Land Cover (SA NLC 2018)**
- Low Shrubland (other regions)
- Low Shrubland (Succulent Karoo)
- Low Shrubland (Nama Karoo)
- Dry Pans
- Bare Riverbed Material
- Bare Ground
- Roads and Rail
- Mines

1:30 000

Provincial Context



De Rust: Solar PV2 - Hydrology



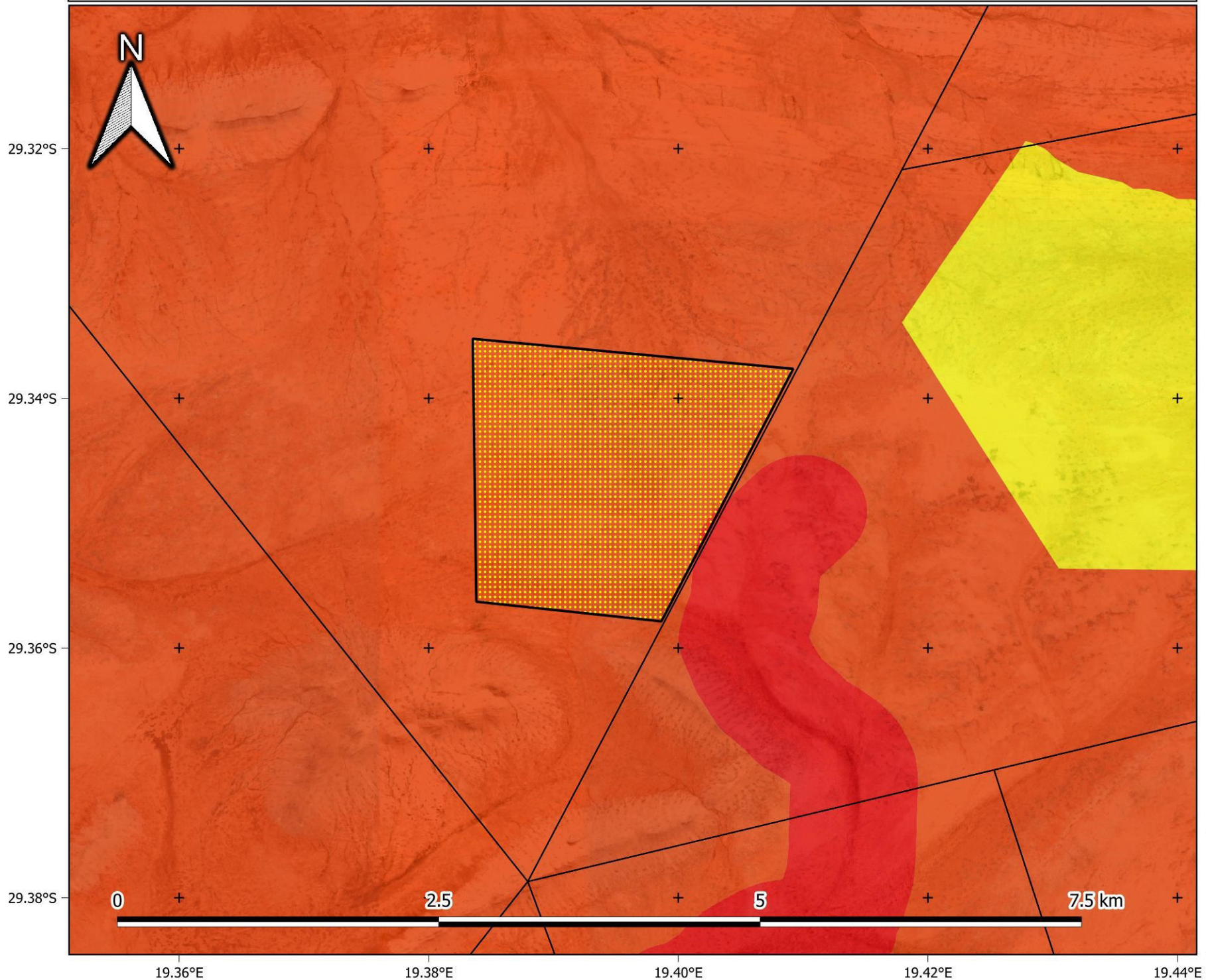
Legend

- Solar PV area
- Farm portions
- Aquatic ecologist's delineations**
 - Watercourses
- NFEPA (2012)**
 - Rivers
 - Wetlands

1:20 000

Provincial Context

De Rust: Solar PV2 - Critical Biodiversity Areas



Legend

- Solar PV area
- Farm portions

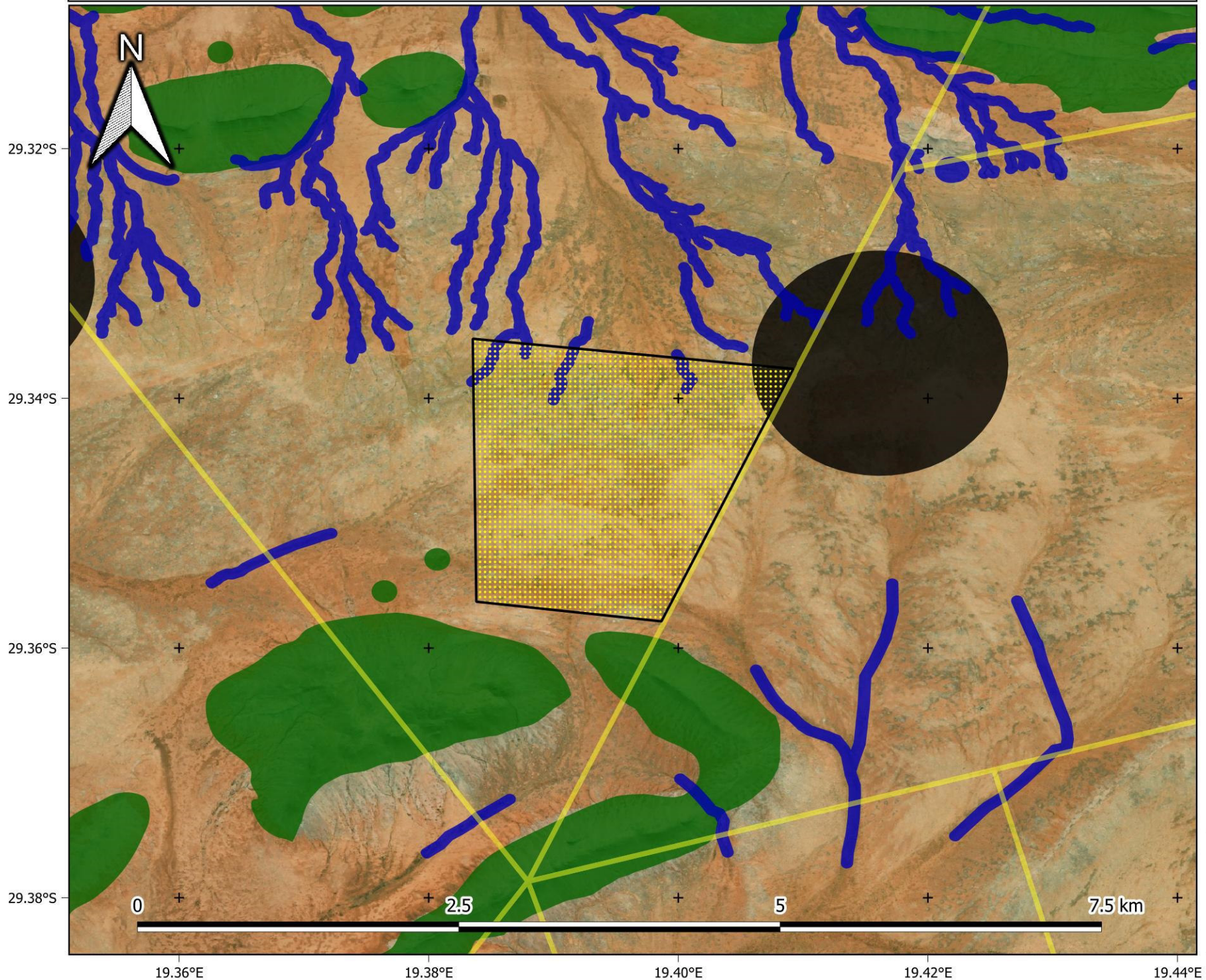
Critical Biodiversity Areas (NC 2018)

- CBA 1
- CBA 2
- ESA
- ONA

1:30 000



De Rust: Solar PV2 - Habitat Sensitivity



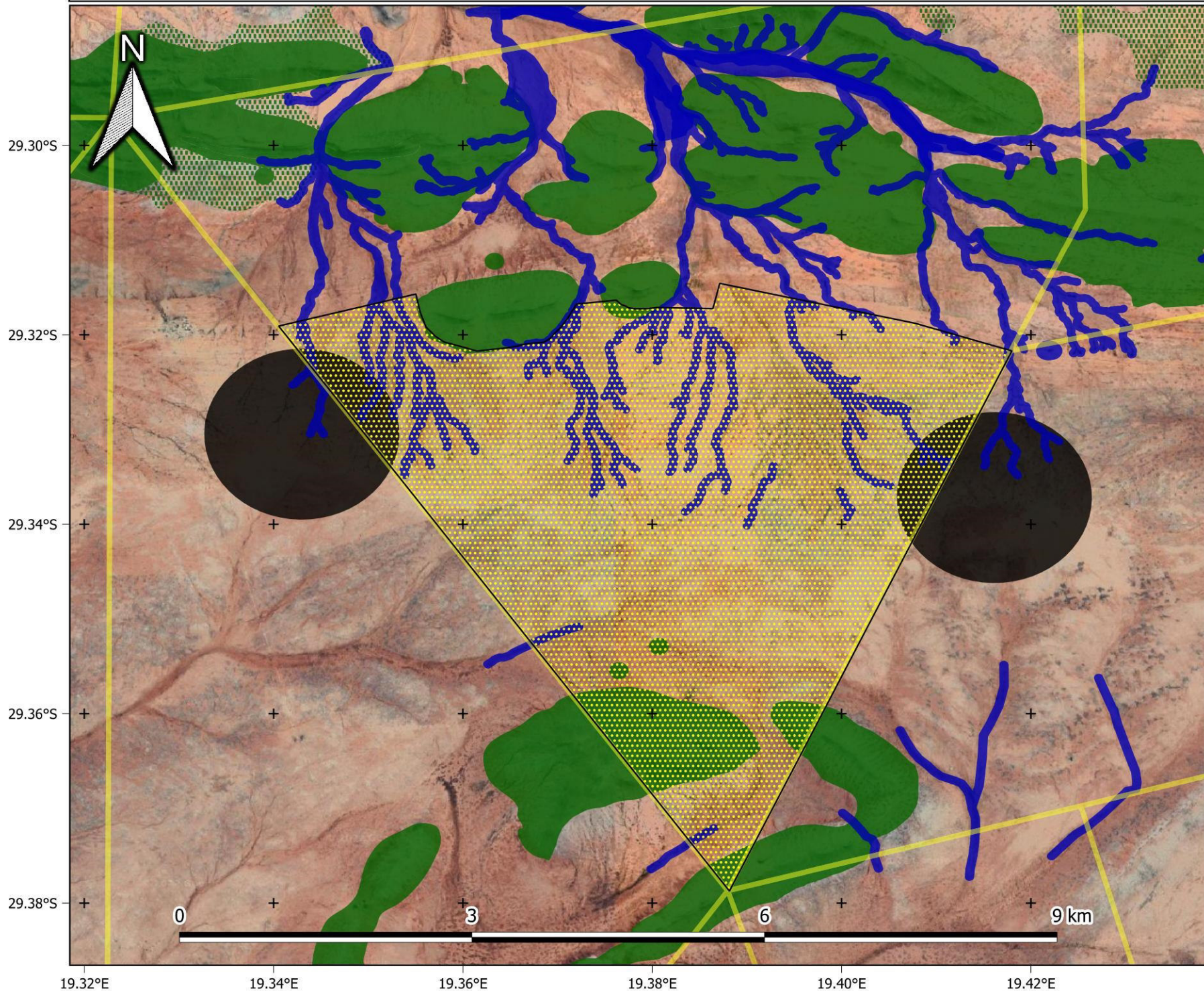
Legend

- Solar PV area (alternative 1)
- Farm portions
- Aquatics no-go
- Avifauna no-go
- Terrestrial no-go
- Terrestrial medium sensitivity

1:30 000

Provincial Context

De Rust: Solar PV - Habitat Sensitivity (Alternative Layout)

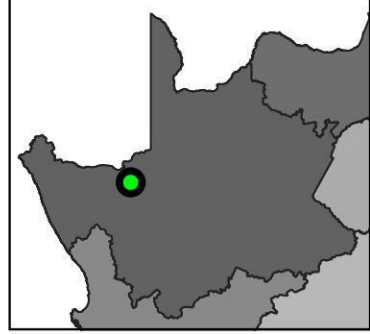


Legend

- Solar PV area (alternative 2)
- Farm portions
- Aquatics no-go
- Avifauna no-go
- Terrestrial no-go
- Terrestrial medium sensitivity

1:40 000

Provincial Context



Appendix A2:

Photographs



De Rust Solar PV1 and PV 2





