

PROPOSED DOORN RIVIER 1 SOLAR PV FACILITY AND GRID CONNECTION, PORTION 21 OF FARM DOORN RIVER NO. 330, VIRGINIA



SITE CO-ORDINATES:
(Approximate centre point)

**28° 09' 54.10" S,
26° 48' 58.50" E.**

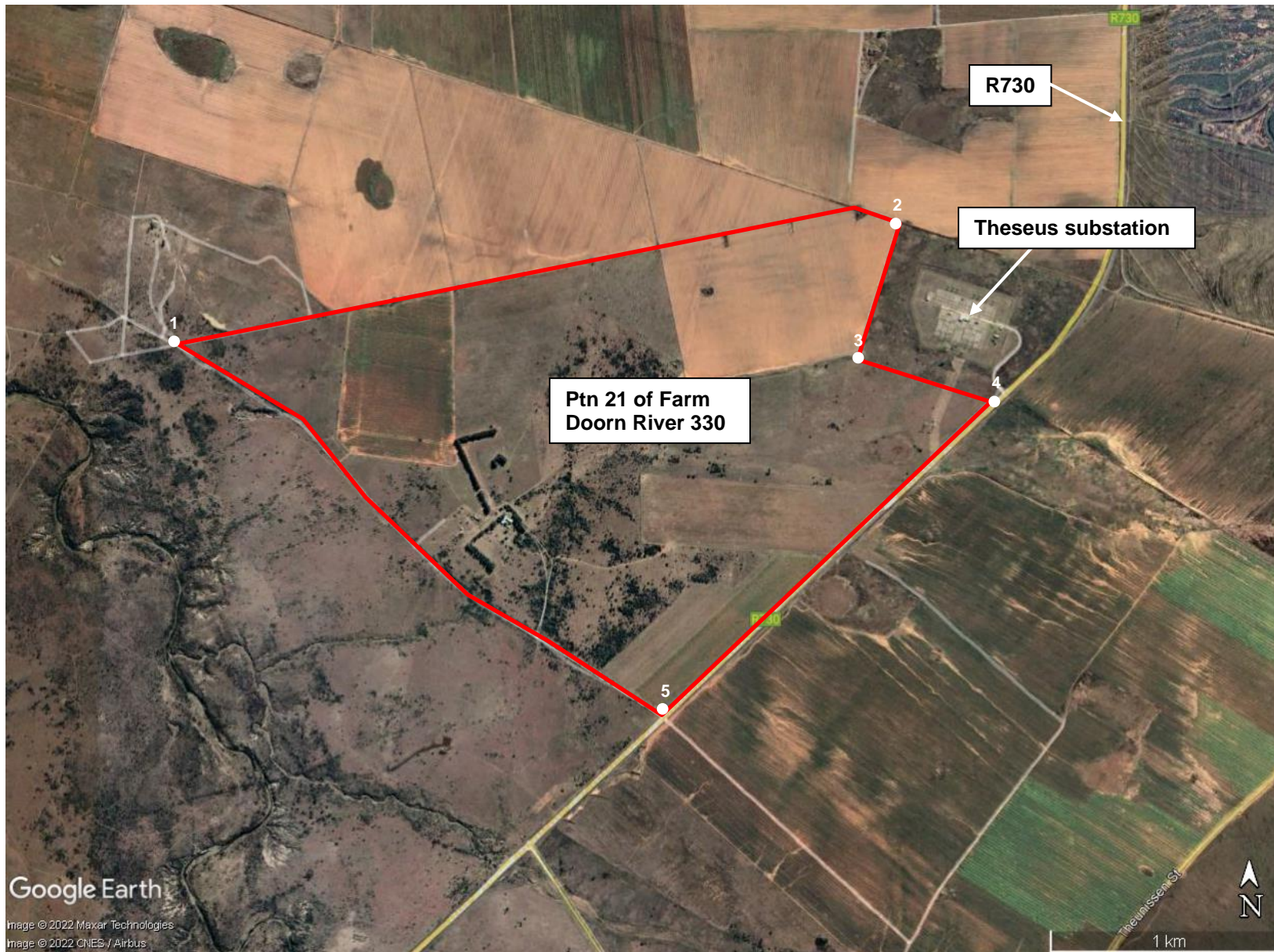
 **PROPOSED SITE**

DFFE REF:
TBC

ENVIROAFRICA REF:
0545
August 2022



PROPOSED DOORNRIVIER 1 SOLAR PV FACILITY AND GRID CONNECTION, PORTION 21 OF FARM DOORN RIVER NO. 330, VIRGINIA



- SITE CO-ORDINATES:**
- Point 1: 28° 09' 38.20" S, 26° 47' 42.30" E.
 - Point 2: 28° 09' 22.00" S, 26° 49' 34.40" E.
 - Point 3: 28° 09' 40.00" S, 26° 49' 27.60" E.
 - Point 4: 28° 09' 46.40" S, 26° 49' 48.60" E.
 - Point 5: 28° 10' 29.20" S, 26° 48' 57.60" E.

 **PROPOSED DOORNRIVIER 1 SOLAR PV FACILITY**

DFFE REF:
TBC

ENVIROAFRICA REF:
0545

August 2022



Google Earth

Image © 2022 Maxar Technologies
Image © 2022 CNES / Airbus

1 km