

PROPOSED DOORNRIVIER 2 SOLAR PV FACILITY AND GRID CONNECTION, PORTION 5 OF FARM DOORN RIVER NO. 330, VIRGINIA



SITE CO-ORDINATES:
(Approximate centre point)

28° 10' 33.00" S,
26° 47' 54.00" E.

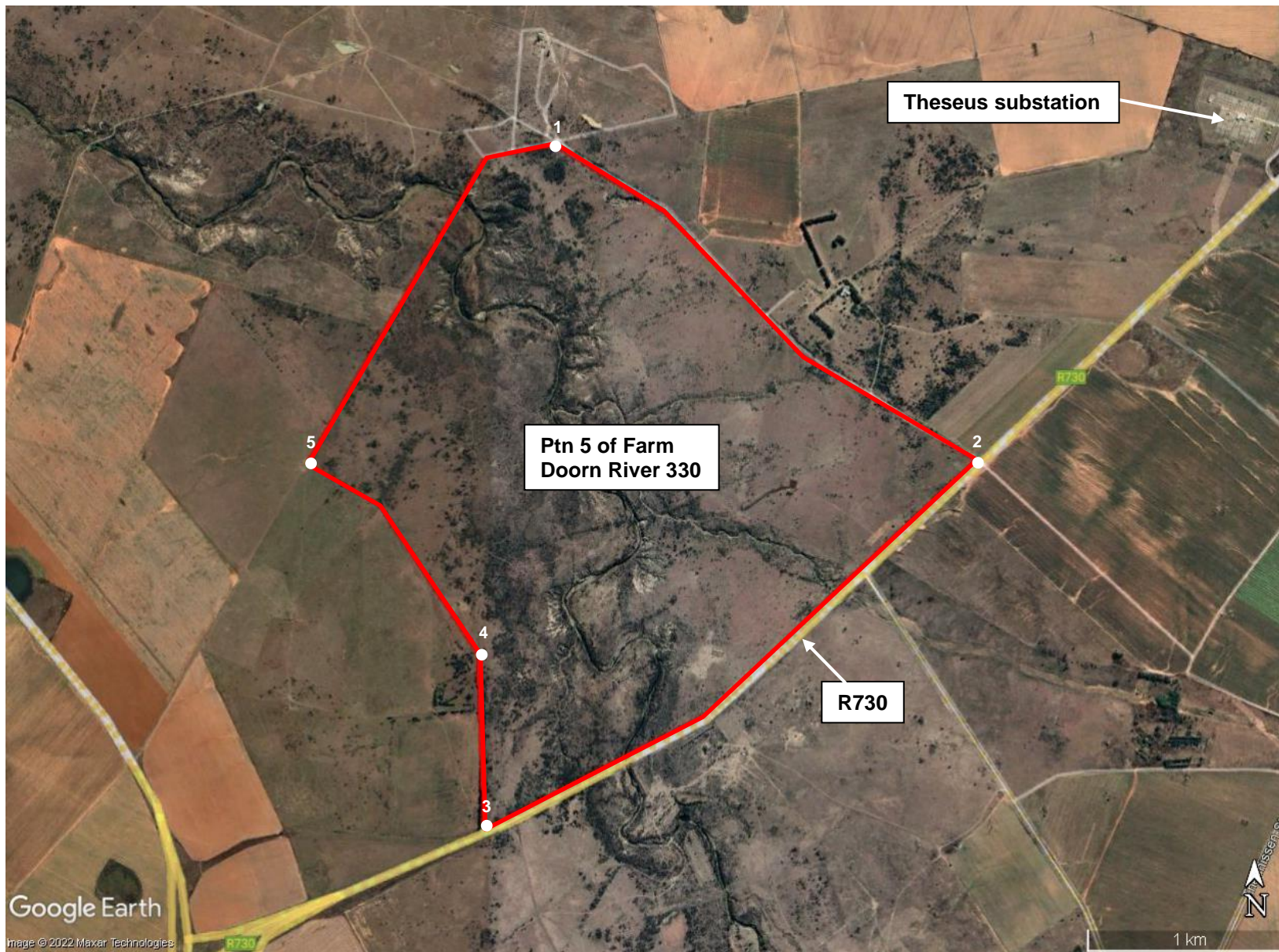
 **PROPOSED SITE**

DFFE REF:
TBC

ENVIROAFRICA REF:
0545
August 2022



PROPOSED DOORNRIVIER 2 SOLAR PV FACILITY AND GRID CONNECTION, PORTION 5 OF FARM DOORN RIVER NO. 330, VIRGINIA



- SITE CO-ORDINATES:**
- Point 1: 28° 09' 38.70" S,
26° 47' 41.00" E.
 - Point 2: 28° 10' 29.35" S,
26° 48' 56.60" E.
 - Point 3: 28° 11' 27.75" S,
26° 47' 27.75" E.
 - Point 4: 28° 10' 59.70" S,
26° 47' 26.90" E.
 - Point 5: 28° 10' 29.35" S,
26° 46' 56.25" E.

 **PROPOSED DOORNRIVIER 2 SOLAR PV FACILITY**

DFFE REF:
TBC

ENVIROAFRICA REF:
0545

August 2022

