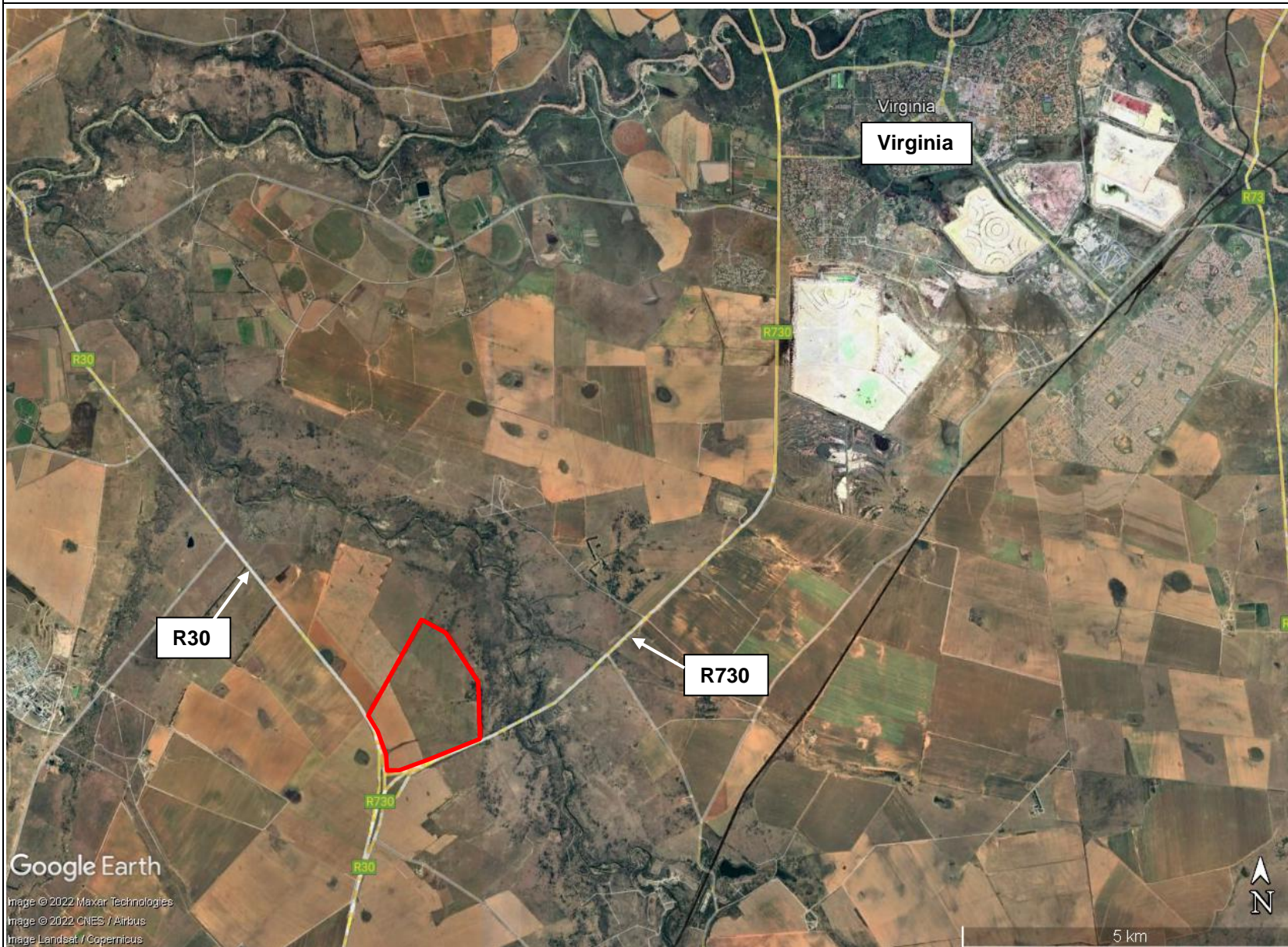


PROPOSED DOORNRIVIER 3 SOLAR PV FACILITY, REMAINDER OF FARM DOORN RIVER NO. 330, VIRGINIA



SITE CO-ORDINATES:
(Approximate centre point)

28° 11' 11.40" S,
26° 47' 00.50" E.

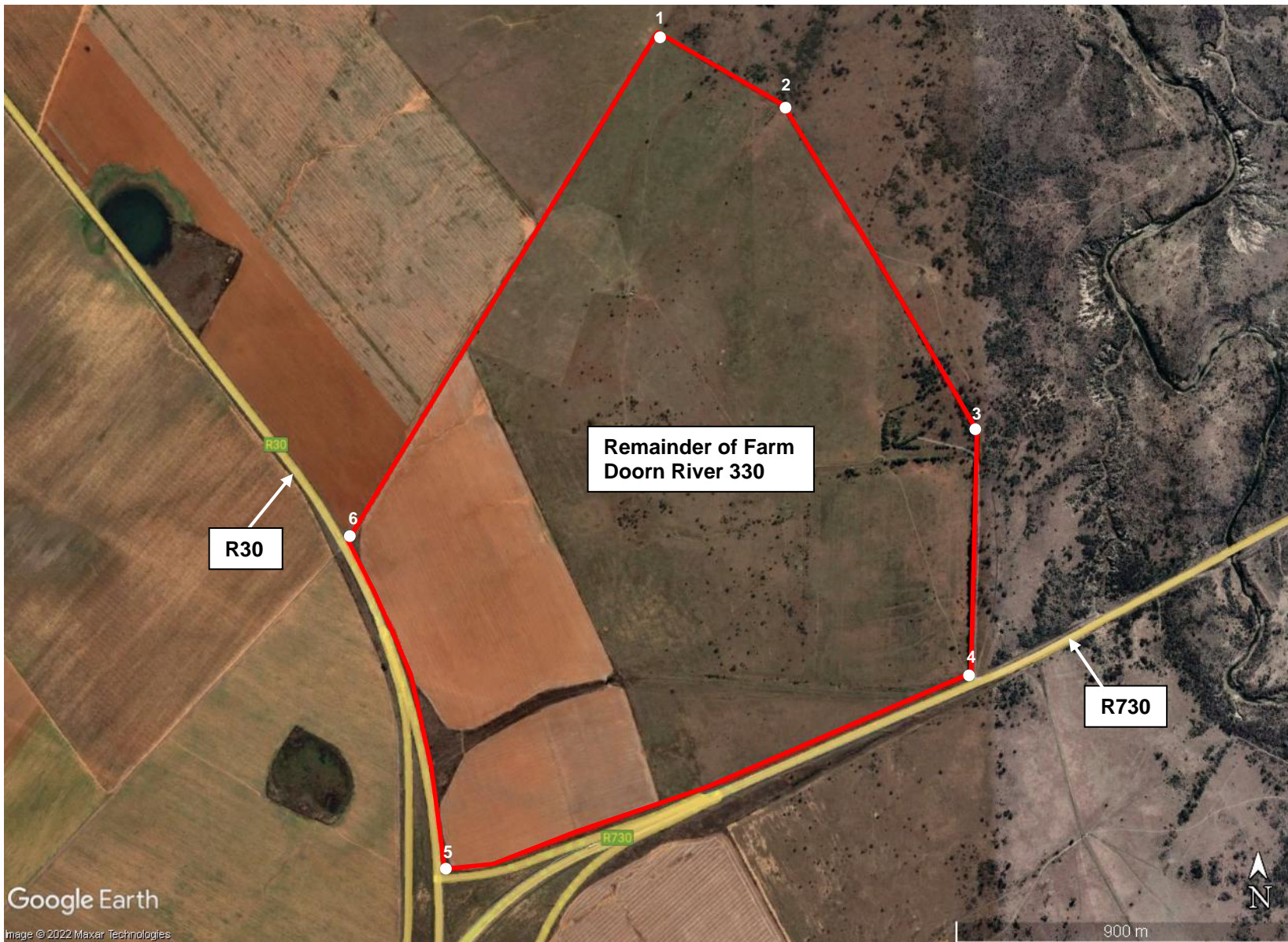
 **PROPOSED SITE**


DFFE REF:
TBC

ENVIROAFRICA REF:
0545
August 2022



PROPOSED DOORNRIVIER 3 SOLAR PV FACILITY, REMAINDER OF FARM DOORN RIVER NO. 330, VIRGINIA



SITE CO-ORDINATES:
Point 1: 28° 10' 29.60" S, 26° 46' 56.40" E.
Point 2: 28° 10' 36.70" S, 26° 47' 09.30" E.
Point 3: 28° 11' 06.60" S, 26° 47' 28.60" E.
Point 4: 28° 11' 27.80" S, 26° 47' 27.60" E.
Point 5: 28° 11' 44.20" S, 26° 46' 35.70" E.
Point 6: 28° 11' 16.40" S, 26° 46' 25.80" E.
 PROPOSED DOORNRIVIER 3 SOLAR PV FACILITY

DFFE REF:
TBC

ENVIROAFRICA REF:
0545

August 2022



enviroafrica@enviroafrica.com | 082 312 3123 | 082 312 3123 | 082 312 3123