

**SCREENING REPORT FOR AN ENVIRONMENTAL AUTHORIZATION AS  
REQUIRED BY THE 2014 EIA REGULATIONS – PROPOSED SITE  
ENVIRONMENTAL SENSITIVITY**

**EIA Reference number:** TBC

**Project name:** PROVISION OF ENVIRONMENTAL CONSULTANCY AND SPECIALIST SERVICES FOR  
THE PORT OF PORT ELIZABETH IN THE EASTERN CAPE

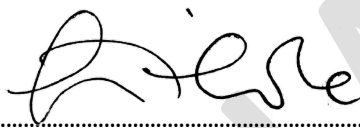
**Project title:** PROPOSED REHABILITATION OF THE OLD TUG JETTY AT THE PORT OF PORT  
ELIZABETH IN THE EASTERN CAPE

**Date screening report generated:** 03/08/2022 13:14:23

**Applicant:** TRANSNET SOC LTD

**Compiler:** DR PATRICK SITHOLE

**Compiler signature:**



.....

**Application Category:** Infrastructure | Localised infrastructure | Infrastructure in the  
Sea\_Estuary\_Littoral Active Zone\_Development Setback\_100M Inland or coastal public property

# Table of Contents

- Proposed Project Location ..... 3
  - Orientation map 1: General location ..... 3
- Map of proposed site and relevant area(s) ..... 4
  - Cadastral details of the proposed site ..... 4
  - Wind and Solar developments with an approved Environmental Authorisation or applications under consideration within 30 km of the proposed area ..... 4
  - Environmental Management Frameworks relevant to the application ..... 4
- Environmental screening results and assessment outcomes ..... 5
  - Relevant development incentives, restrictions, exclusions or prohibitions ..... 5
- Map indicating proposed development footprint within applicable development incentive, restriction, exclusion or prohibition zones ..... 6
  - Proposed Development Area Environmental Sensitivity ..... 6
  - Specialist assessments identified ..... 7
- Results of the environmental sensitivity of the proposed area ..... 9
  - MAP OF RELATIVE ANIMAL SPECIES THEME SENSITIVITY ..... 9
  - MAP OF RELATIVE AQUATIC BIODIVERSITY THEME SENSITIVITY ..... 10
  - MAP OF RELATIVE ARCHAEOLOGICAL AND CULTURAL HERITAGE THEME SENSITIVITY ..... 11
  - MAP OF RELATIVE CIVIL AVIATION THEME SENSITIVITY ..... 12
  - MAP OF RELATIVE DEFENCE THEME SENSITIVITY ..... 13
  - MAP OF RELATIVE PALEONTOLOGY THEME SENSITIVITY ..... 14
  - MAP OF RELATIVE PLANT SPECIES THEME SENSITIVITY ..... 15
  - MAP OF RELATIVE TERRESTRIAL BIODIVERSITY THEME SENSITIVITY ..... 16

# Proposed Project Location

## Orientation map 1: General location

### General Orientation: PROVISION OF ENVIRONMENTAL CONSULTANCY AND SPECIALIST SERVICES FOR THE PORT OF PORT ELIZABETH IN THE EASTERN CAPE



## Map of proposed site and relevant area(s)



## Cadastral details of the proposed site

Property details:

No	Farm Name	Farm/ Erf No	Portion	Latitude	Longitude	Property Type
1	HUMEWOOD	1051	0	33°58'0.66S	25°37'56.5E	Erven

Development footprint<sup>1</sup> vertices:  
No development footprint(s) specified.

## Wind and Solar developments with an approved Environmental Authorisation or applications under consideration within 30 km of the proposed area

No nearby wind or solar developments found.

## Environmental Management Frameworks relevant to the application

No intersections with EMF areas found.

<sup>1</sup> "development footprint", means the area within the site on which the development will take place and includes all ancillary developments for example roads, power lines, boundary walls, paving etc. which require vegetation clearance or which will be disturbed and for which the application has been submitted.

## Environmental screening results and assessment outcomes

The following sections contain a summary of any development incentives, restrictions, exclusions or prohibitions that apply to the proposed development site as well as the most environmental sensitive features on the site based on the site sensitivity screening results for the application classification that was selected. The application classification selected for this report is:

**Infrastructure | Localised infrastructure | Infrastructure in the Sea\_Estuary\_Littoral Active Zone\_Development Setback\_100M Inland or coastal public property.**

### Relevant development incentives, restrictions, exclusions or prohibitions

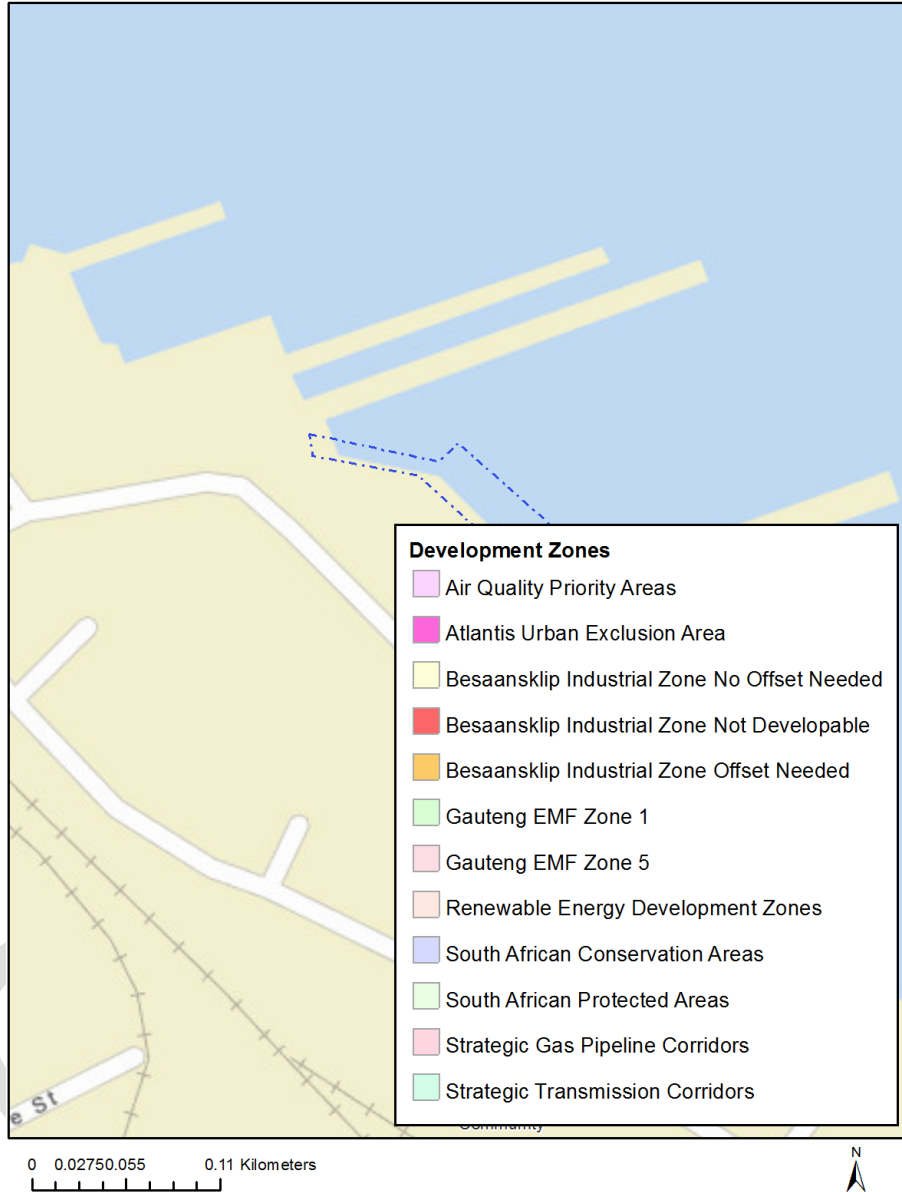
The following development incentives, restrictions, exclusions or prohibitions and their implications that apply to this site are indicated below.

No intersection with any development zones found.

OFFICIAL

Map indicating proposed development footprint within applicable development incentive, restriction, exclusion or prohibition zones

**Project Location: PROVISION OF ENVIRONMENTAL CONSULTANCY AND SPECIALIST SERVICES FOR THE PORT OF PORT ELIZABETH IN THE EASTERN CAPE**



**Proposed Development Area Environmental Sensitivity**

The following summary of the development site environmental sensitivities is identified. Only the highest environmental sensitivity is indicated. The footprint environmental sensitivities for the proposed development footprint as identified, are indicative only and must be verified on site by a suitably qualified person before the specialist assessments identified below can be confirmed.

Theme	Very High sensitivity	High sensitivity	Medium sensitivity	Low sensitivity
-------	-----------------------	------------------	--------------------	-----------------

Animal Species Theme			X	
Aquatic Biodiversity Theme				X
Archaeological and Cultural Heritage Theme	X			
Civil Aviation Theme	X			
Defence Theme	X			
Paleontology Theme	X			
Plant Species Theme				X
Terrestrial Biodiversity Theme				X

### Specialist assessments identified

Based on the selected classification, and the environmental sensitivities of the proposed development footprint, the following list of specialist assessments have been identified for inclusion in the assessment report. It is the responsibility of the EAP to confirm this list and to motivate in the assessment report, the reason for not including any of the identified specialist study including the provision of photographic evidence of the site situation.

N o	Specialist assessment	Assessment Protocol
1	Landscape/Visual Impact Assessment	<a href="https://screening.environment.gov.za/ScreeningDownloads/AssessmentProtocols/Gazetted_General_Requirement_Assessment_Protocols.pdf">https://screening.environment.gov.za/ScreeningDownloads/AssessmentProtocols/Gazetted_General_Requirement_Assessment_Protocols.pdf</a>
2	Archaeological and Cultural Heritage Impact Assessment	<a href="https://screening.environment.gov.za/ScreeningDownloads/AssessmentProtocols/Gazetted_General_Requirement_Assessment_Protocols.pdf">https://screening.environment.gov.za/ScreeningDownloads/AssessmentProtocols/Gazetted_General_Requirement_Assessment_Protocols.pdf</a>
3	Palaeontology Impact Assessment	<a href="https://screening.environment.gov.za/ScreeningDownloads/AssessmentProtocols/Gazetted_General_Requirement_Assessment_Protocols.pdf">https://screening.environment.gov.za/ScreeningDownloads/AssessmentProtocols/Gazetted_General_Requirement_Assessment_Protocols.pdf</a>
4	Terrestrial Biodiversity Impact Assessment	<a href="https://screening.environment.gov.za/ScreeningDownloads/AssessmentProtocols/Gazetted_Terrestrial_Biodiversity_Assessment_Protocols.pdf">https://screening.environment.gov.za/ScreeningDownloads/AssessmentProtocols/Gazetted_Terrestrial_Biodiversity_Assessment_Protocols.pdf</a>
5	Aquatic Biodiversity Impact Assessment	<a href="https://screening.environment.gov.za/ScreeningDownloads/AssessmentProtocols/Gazetted_Aquatic_Biodiversity_Assessment_Protocols.pdf">https://screening.environment.gov.za/ScreeningDownloads/AssessmentProtocols/Gazetted_Aquatic_Biodiversity_Assessment_Protocols.pdf</a>
6	Marine Impact Assessment	<a href="https://screening.environment.gov.za/ScreeningDownloads/AssessmentProtocols/Gazetted_General_Requirement_Assessment_Protocols.pdf">https://screening.environment.gov.za/ScreeningDownloads/AssessmentProtocols/Gazetted_General_Requirement_Assessment_Protocols.pdf</a>
7	Avian Impact	<a href="https://screening.environment.gov.za/ScreeningDownloads/AssessmentProtocols">https://screening.environment.gov.za/ScreeningDownloads/AssessmentProtocols</a>

	Assessment	<a href="#">/Gazetted_Avifauna_Assessment_Protocols.pdf</a>
8	Geotechnical Assessment	<a href="https://screening.environment.gov.za/ScreeningDownloads/AssessmentProtocols/Gazetted_General_Requirement_Assessment_Protocols.pdf">https://screening.environment.gov.za/ScreeningDownloads/AssessmentProtocols/Gazetted_General_Requirement_Assessment_Protocols.pdf</a>
9	Socio-Economic Assessment	<a href="https://screening.environment.gov.za/ScreeningDownloads/AssessmentProtocols/Gazetted_General_Requirement_Assessment_Protocols.pdf">https://screening.environment.gov.za/ScreeningDownloads/AssessmentProtocols/Gazetted_General_Requirement_Assessment_Protocols.pdf</a>
10	Plant Species Assessment	<a href="https://screening.environment.gov.za/ScreeningDownloads/AssessmentProtocols/Gazetted_Plant_Species_Assessment_Protocols.pdf">https://screening.environment.gov.za/ScreeningDownloads/AssessmentProtocols/Gazetted_Plant_Species_Assessment_Protocols.pdf</a>
11	Animal Species Assessment	<a href="https://screening.environment.gov.za/ScreeningDownloads/AssessmentProtocols/Gazetted_Animal_Species_Assessment_Protocols.pdf">https://screening.environment.gov.za/ScreeningDownloads/AssessmentProtocols/Gazetted_Animal_Species_Assessment_Protocols.pdf</a>

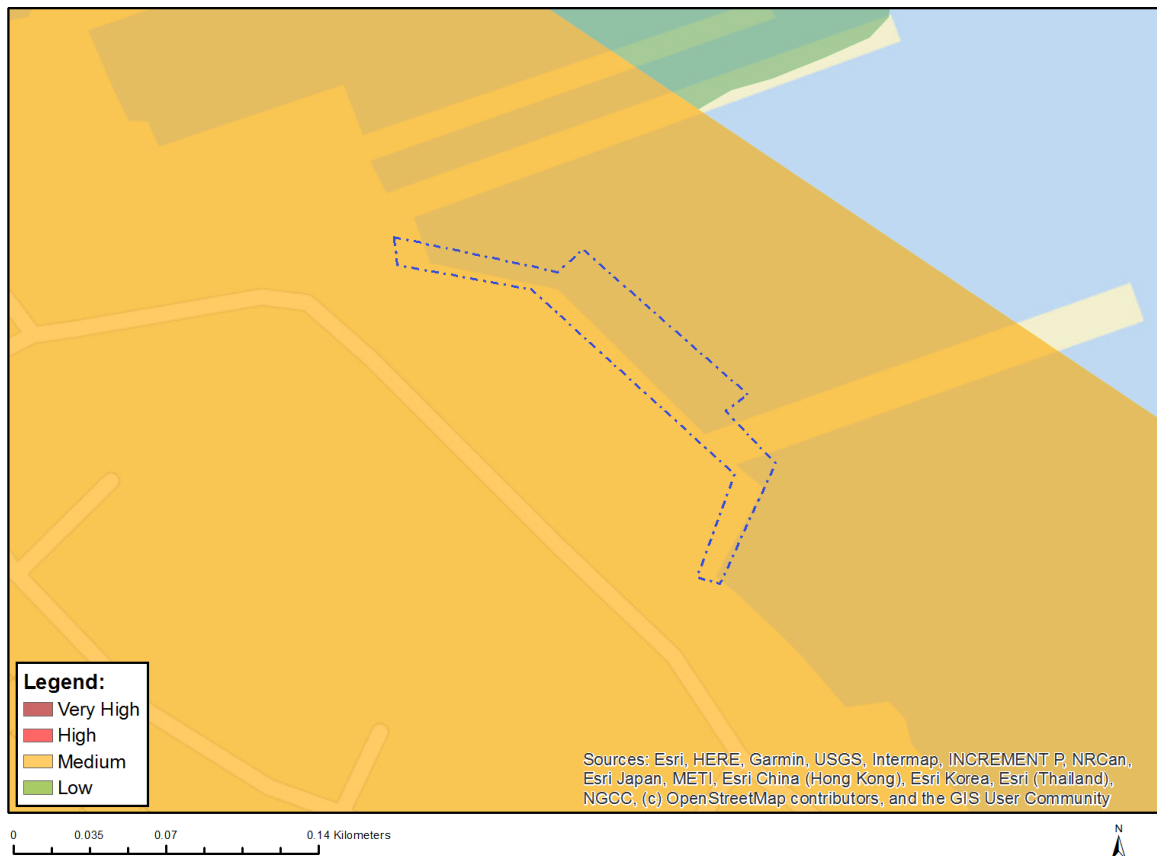
OFFICIAL



## Results of the environmental sensitivity of the proposed area.

The following section represents the results of the screening for environmental sensitivity of the proposed site for relevant environmental themes associated with the project classification. It is the duty of the EAP to ensure that the environmental themes provided by the screening tool are comprehensive and complete for the project. Refer to the disclaimer.

### MAP OF RELATIVE ANIMAL SPECIES THEME SENSITIVITY



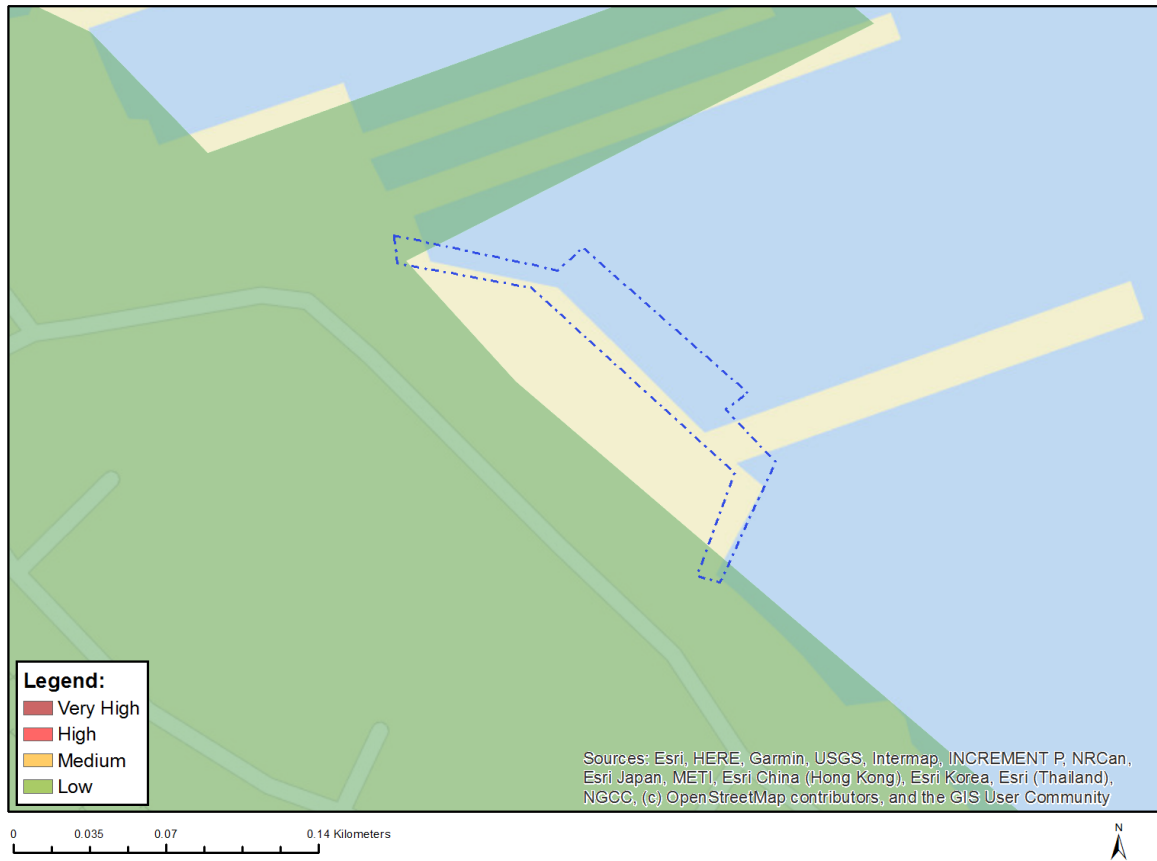
Where only a sensitive plant unique number or sensitive animal unique number is provided in the screening report and an assessment is required, the environmental assessment practitioner (EAP) or specialist is required to email SANBI at [eiadatarequests@sanbi.org.za](mailto:eiadatarequests@sanbi.org.za) listing all sensitive species with their unique identifiers for which information is required. The name has been withheld as the species may be prone to illegal harvesting and must be protected. SANBI will release the actual species name after the details of the EAP or specialist have been documented.

Very High sensitivity	High sensitivity	Medium sensitivity	Low sensitivity
		X	

#### Sensitivity Features:

Sensitivity	Feature(s)
Medium	Mammalia-Chlorotalpa duthieae
Medium	Sensitive species 8
Medium	Invertebrate-Aneuryphymus montanus

## MAP OF RELATIVE AQUATIC BIODIVERSITY THEME SENSITIVITY

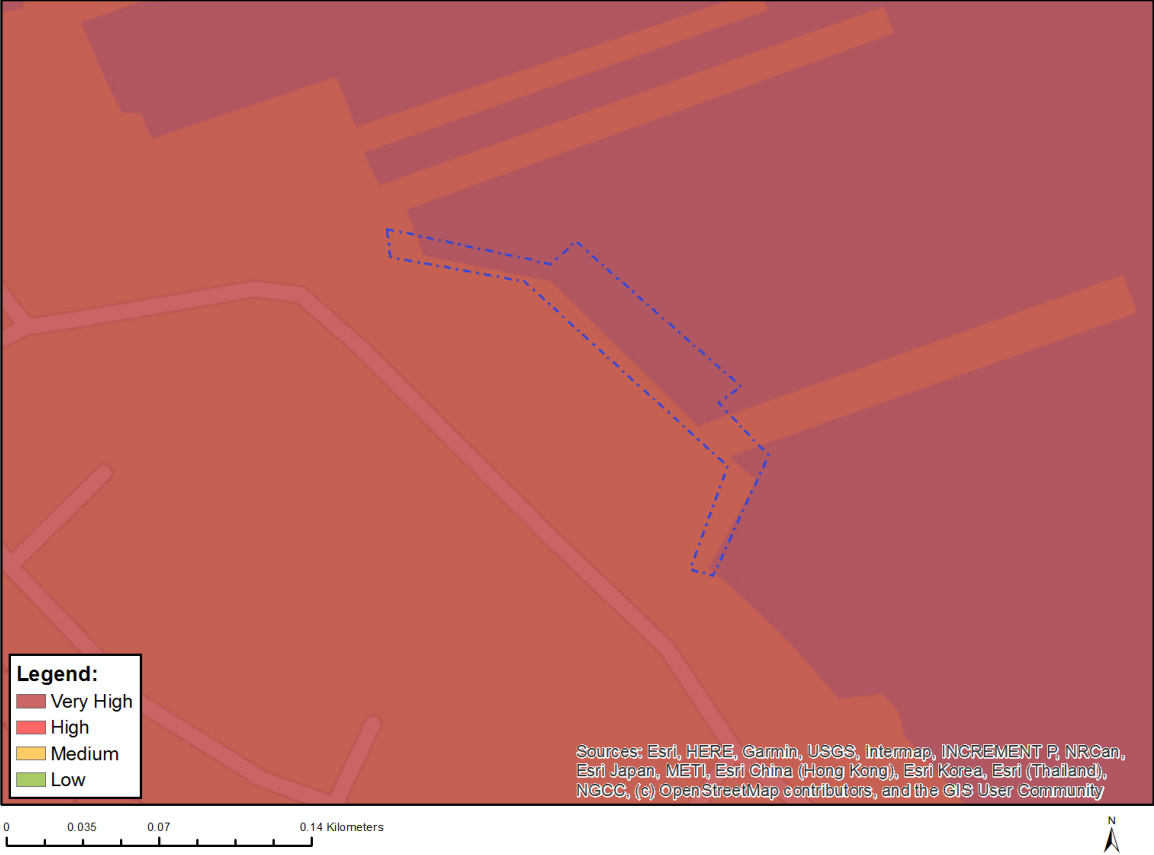


Very High sensitivity	High sensitivity	Medium sensitivity	Low sensitivity
			X

### Sensitivity Features:

Sensitivity	Feature(s)
Low	Low sensitivity

# MAP OF RELATIVE ARCHAEOLOGICAL AND CULTURAL HERITAGE THEME SENSITIVITY

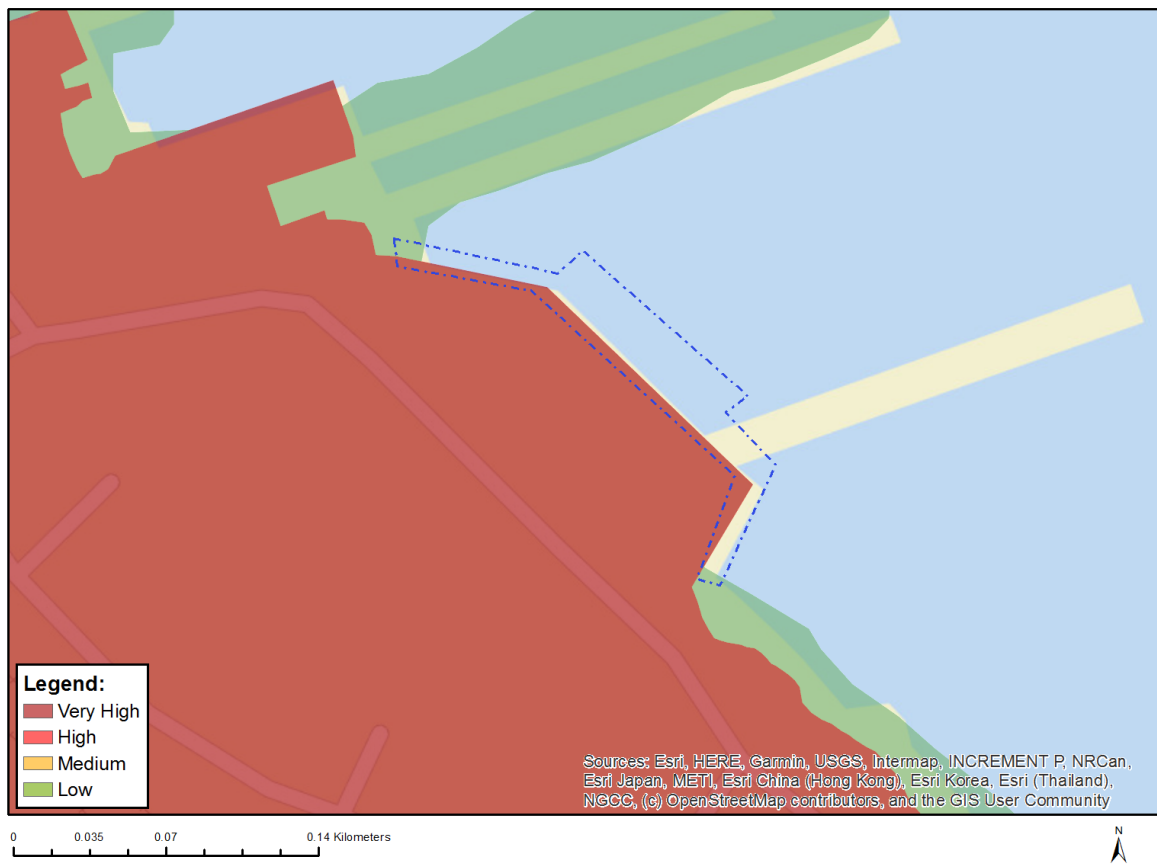


Very High sensitivity	High sensitivity	Medium sensitivity	Low sensitivity
X			

**Sensitivity Features:**

Sensitivity	Feature(s)
Very High	Within 2km of a Grade II Heritage site

## MAP OF RELATIVE CIVIL AVIATION THEME SENSITIVITY

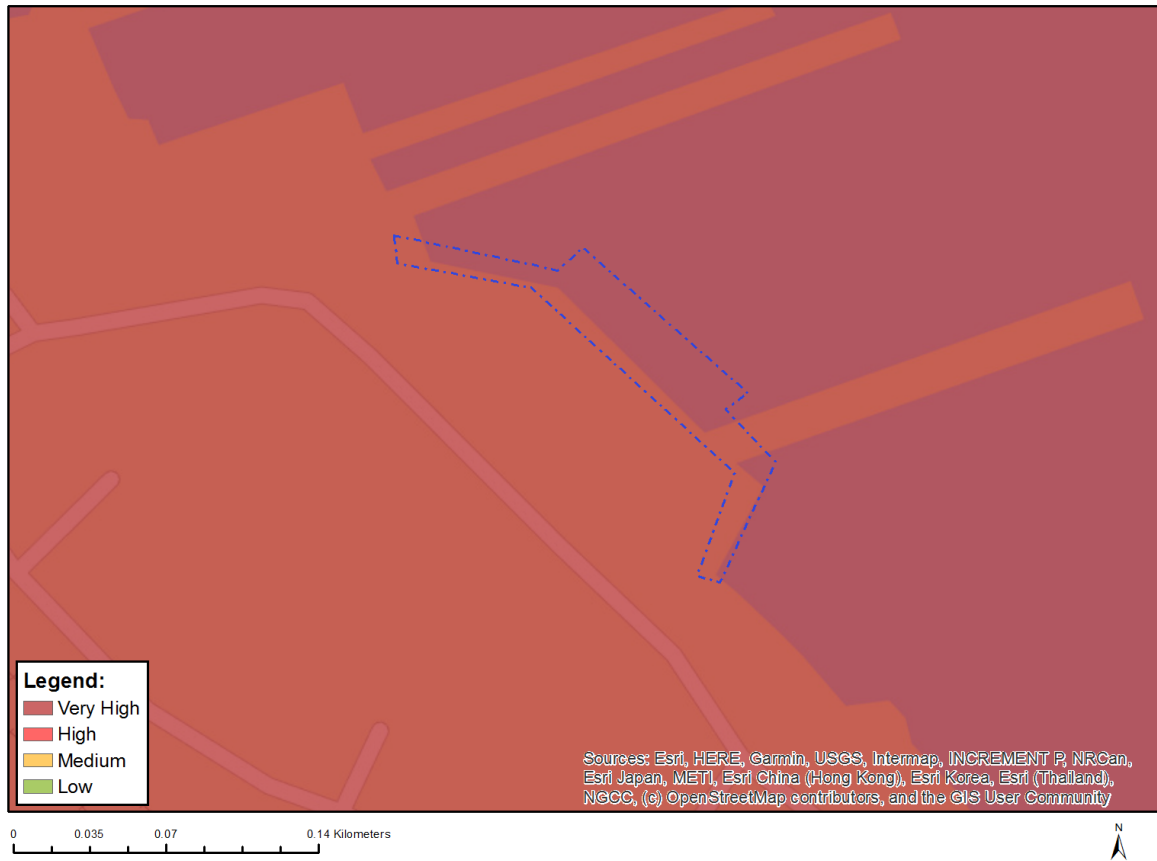


Very High sensitivity	High sensitivity	Medium sensitivity	Low sensitivity
X			

### Sensitivity Features:

Sensitivity	Feature(s)
High	Within 15 km of a civil aviation radar
High	Dangerous and restricted airspace as demarcated
Low	Low sensitivity
Medium	Within 5 km of an air traffic control or navigation site
Very High	Within 8 km of a major civil aviation aerodrome

## MAP OF RELATIVE DEFENCE THEME SENSITIVITY

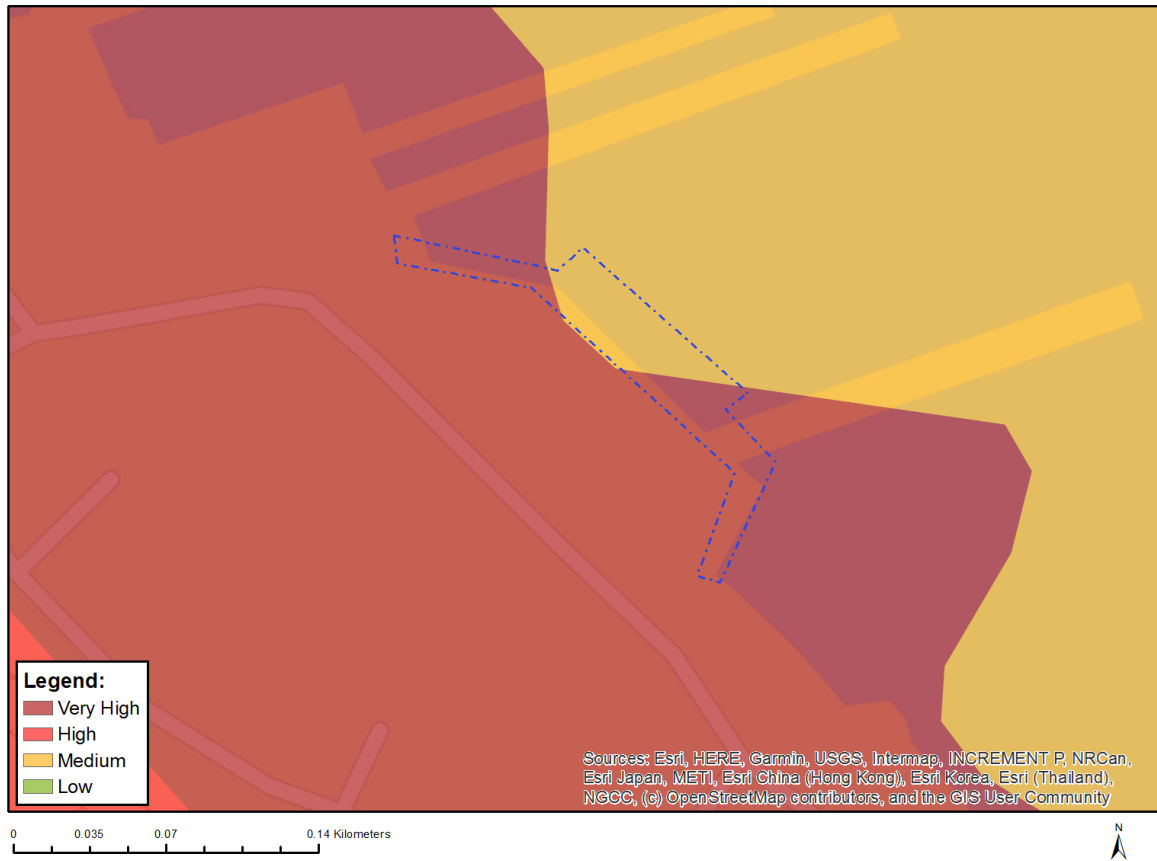


Very High sensitivity	High sensitivity	Medium sensitivity	Low sensitivity
X			

### Sensitivity Features:

Sensitivity	Feature(s)
Very High	Military and Defence Site

## MAP OF RELATIVE PALEONTOLOGY THEME SENSITIVITY

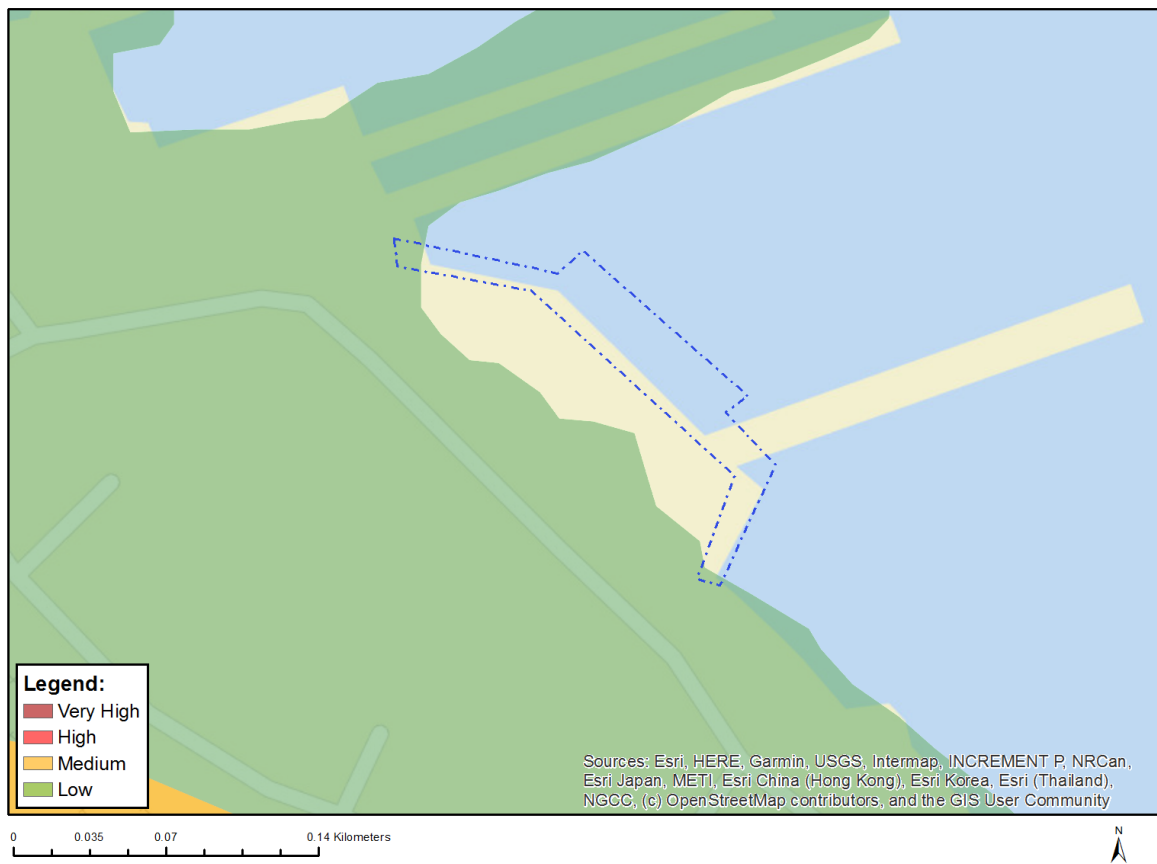


Very High sensitivity	High sensitivity	Medium sensitivity	Low sensitivity
X			

### Sensitivity Features:

Sensitivity	Feature(s)
Medium	Features with a Medium paleontological sensitivity
Very High	Features with a Very High paleontological sensitivity

## MAP OF RELATIVE PLANT SPECIES THEME SENSITIVITY



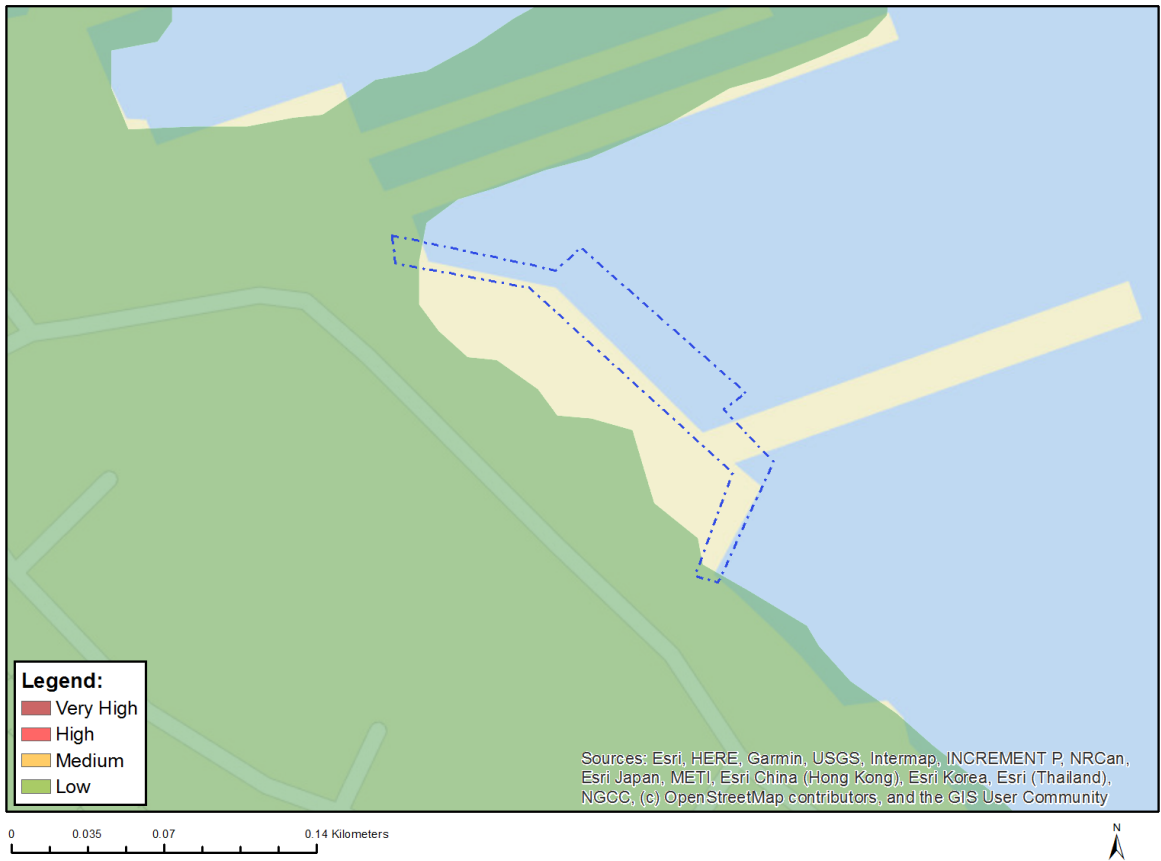
Where only a sensitive plant unique number or sensitive animal unique number is provided in the screening report and an assessment is required, the environmental assessment practitioner (EAP) or specialist is required to email SANBI at [eiadatarequests@sanbi.org.za](mailto:eiadatarequests@sanbi.org.za) listing all sensitive species with their unique identifiers for which information is required. The name has been withheld as the species may be prone to illegal harvesting and must be protected. SANBI will release the actual species name after the details of the EAP or specialist have been documented.

Very High sensitivity	High sensitivity	Medium sensitivity	Low sensitivity
			X

### Sensitivity Features:

Sensitivity	Feature(s)
Low	Low Sensitivity

# MAP OF RELATIVE TERRESTRIAL BIODIVERSITY THEME SENSITIVITY



Very High sensitivity	High sensitivity	Medium sensitivity	Low sensitivity
			X

### Sensitivity Features:

Sensitivity	Feature(s)
Low	Low Sensitivity