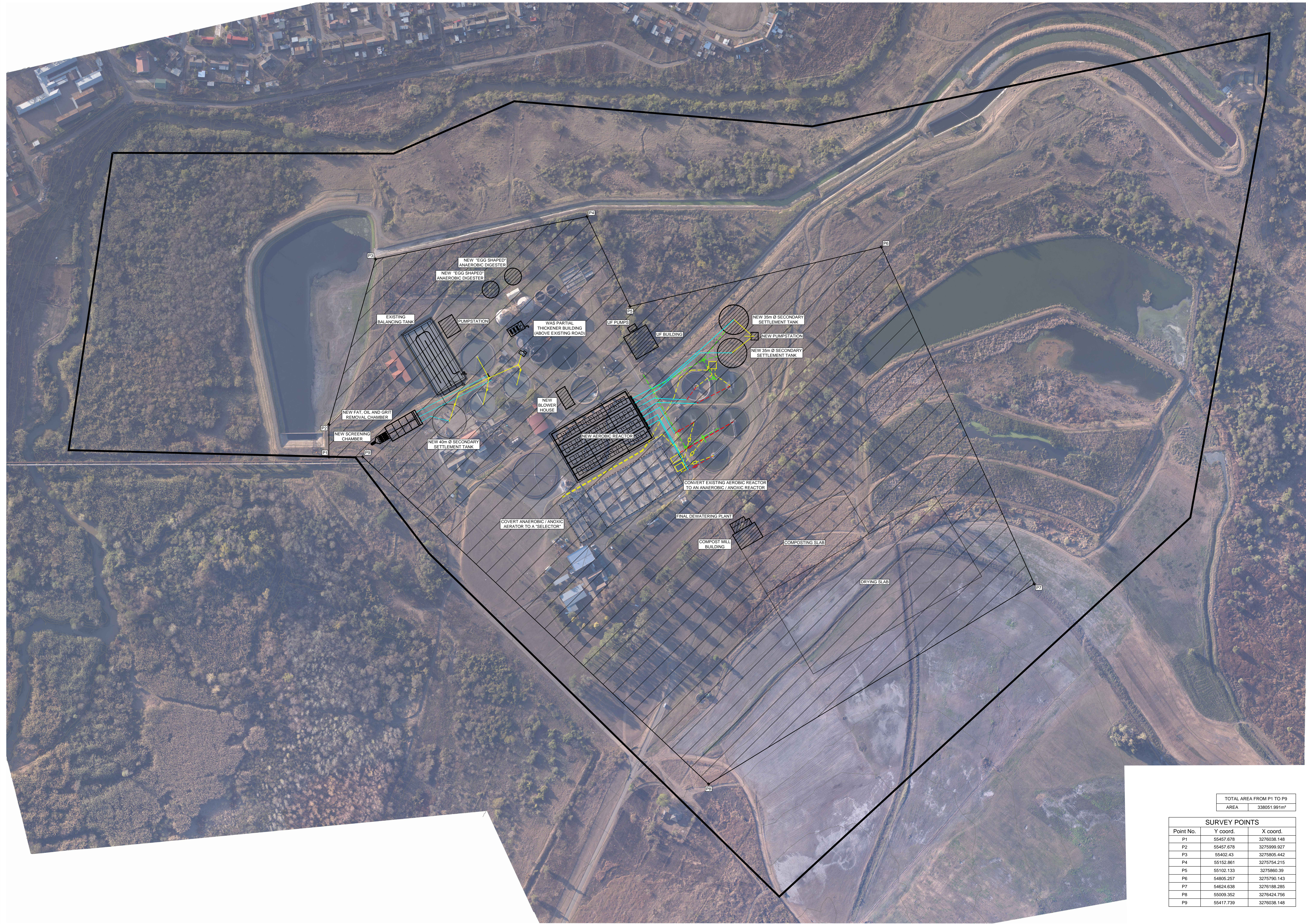


REFERENCE DRAWINGS		
DRAWING No.	TITLE/DESCRIPTION	SOURCE
021642-100-001	SURVEY_EXTENT	GOBA

NOTES:



REV	DATE	DESCRIPTION	NAME	SIGNATURE	APPROVED
A	2013/10	INTERNAL REVIEW			

CONSULTING ENGINEER APPROVAL			
CONSULTING ENGINEER DRAWING No.		1053/03/	
DESIGNED	T WESTGATE	DRAWN	S LABUSCHAGNE
CHECKED	T WESTGATE	CIVIL ENGINEER	
STRUCTURAL ENGINEER		MECHANICAL ENGINEER	
ELECTRICAL ENGINEER		COORDINATION ENGINEER	

consulting engineers & project managers
KwaZulu-Natal
 25 Richelmond Circle
 Ridgside Office Park
 Umhlanga
 +27 31 536 9400 Tel
 +27 31 536 9500 Fax

BOSCH STEMELE
 Consulting Engineers - Project Managers
 BOSCH STEMELE (PTY) LTD.
 P.O. BOX 2009, DURBAN, 4000.
 1 HOLLYWOOD PARK, 5 GANAGATE ROAD,
 LA LUCIA RIDGE OFFICE ESTATE.
 KWAZULU-NATAL, RSA
 TELEPHONE: (031) 536 6000
 TELEFAX: (031) 536 6011
 E-mail: info@boschstemele.co.za
 www.boschstemele.co.za
 REGIONAL OFFICES IN:
 CAPE TOWN • EAST LONDON • PORT ELIZABETH • JOHANNESBURG

UMGENI WATER APPROVAL		
ENGINEERING SERVICES		
DESIGN ENGINEER	NAME	SIGNATURE
ENGINEERING MANAGER	ALAN KOCKOTT	
OPERATIONS		
MANTENANCE MANAGER	NAME	SIGNATURE
ASSET MANAGER	NTSHI BANI	
ASSET MANAGER	ERIC NENE	
ASSET MANAGER	NTSHI BANI	
GENERAL MANAGER	EDMUND MBELE	

UMGENI
 Managing Water for Life
 WATER • AMANZI
 310 BURGER STREET
 PIETERMARITZBURG
 3201
 TEL. (033) 341 1111

DARVILL SPW EXTENSIONS

SURVEY EXTENT

FILE No.	SCALE	SHEET SIZE	SHEET
UI0665A/DARVILL/SPW	AS SHOWN	A0	1 OF 1
CONTRACT No.	DRAWING No.	REVISION	
2012/053	I-A06-CIV-UI0665A-001	A	

TOTAL AREA FROM P1 TO P9	
AREA	338051.991m ²

SURVEY POINTS		
Point No.	Y coord.	X coord.
P1	55457.678	3276038.148
P2	55457.678	3275999.927
P3	55402.43	3275805.442
P4	55152.861	3275754.215
P5	55102.133	3275860.39
P6	54805.257	3275790.143
P7	54624.638	3276188.285
P8	55009.352	3276424.756
P9	55417.739	3276038.148

SITE LAYOUT
 SCALE 1:1500