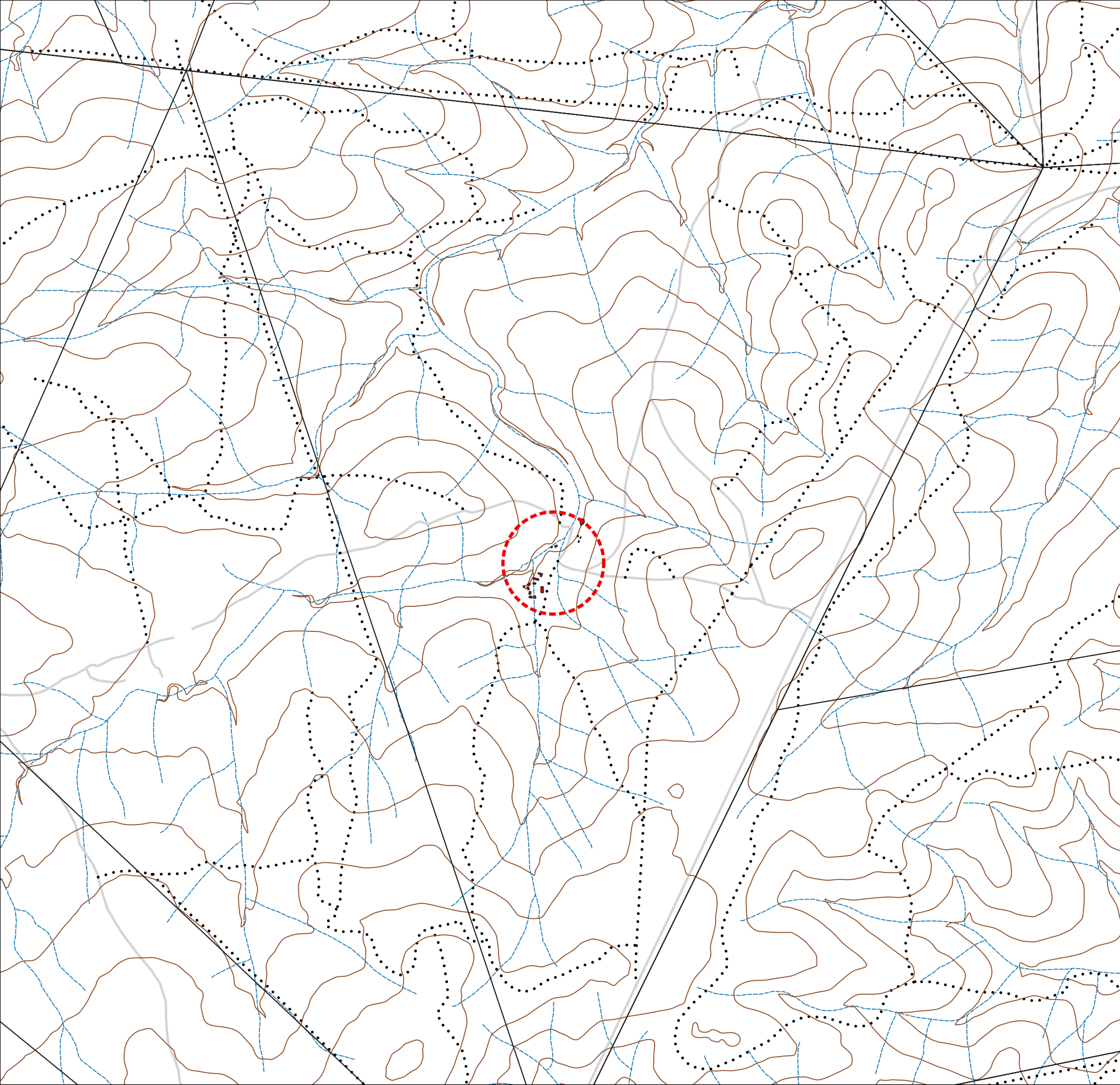


**APPENDIX A: SITE PLAN(S)**

ANNEXURE A: Locality Map.

# Locality map - Proposed upgrading and expansion of Mafunyane Camp Portion 4 of Fife 44 KU, in the Klaserie Private Nature Reserve.



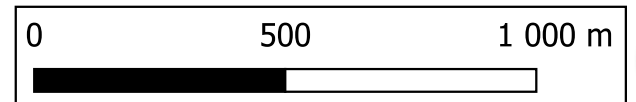
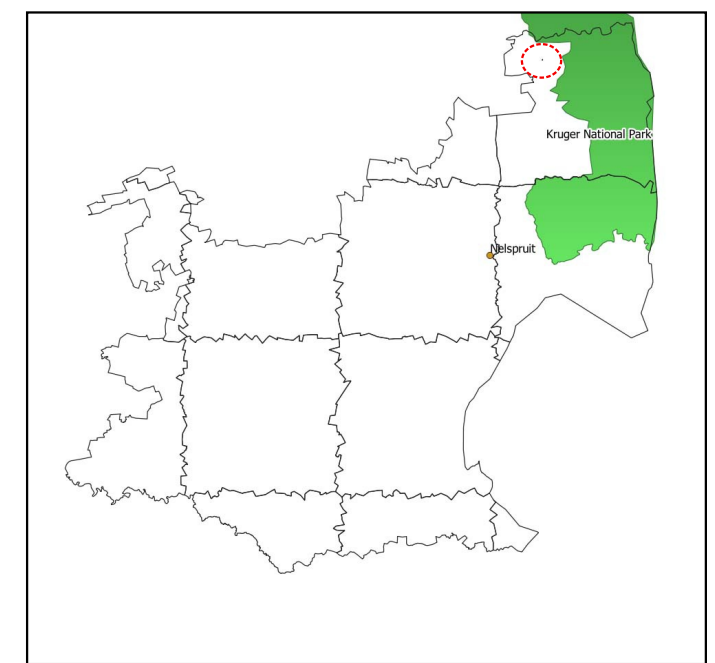
**Proposed Development**  
■ Proposed Infrastructure

**Cadastral**  
□ Farms & Portions

**Additional Information**  
— Contours (5m)

**Roads**  
— Gravel Road  
···· Track/Footpath

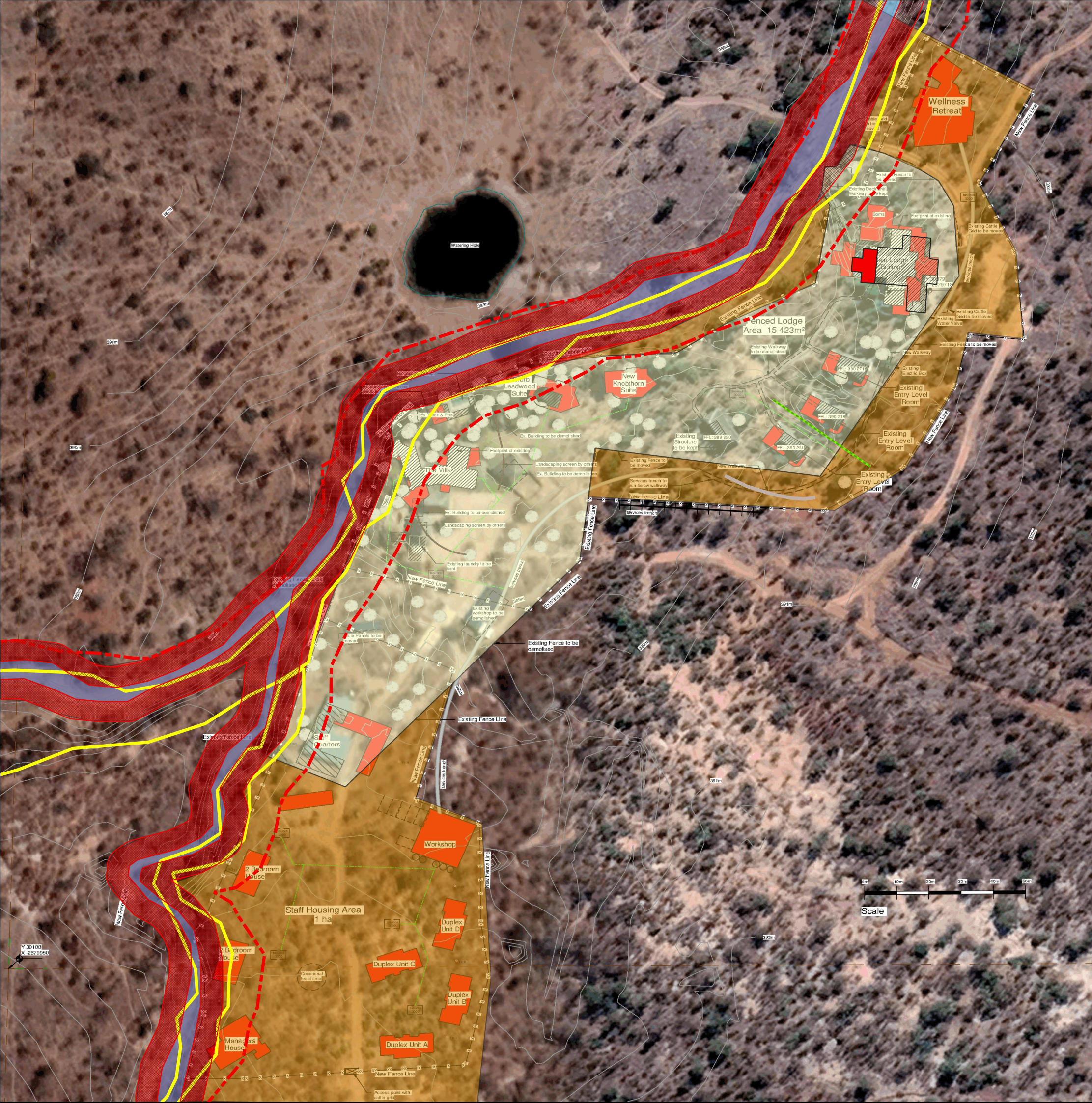
**Sensitivities**  
--- River Lines  
■ River Area



ANNEXURE B: Preferred Layout including onsite sensitivities



# Ecological Sensitivity Map - Proposed upgrading and expansion of Kateka Camp Portion 4 of Fife 44 KU, in the Klaserie Private Nature Reserve.



**Proposed Development**

**Buildings**

- Existing Structure
- New Structure

**Services**

- Fence
- Sewer Line
- Walkway

**Cadastral**

- Farms & Portions

**Additional Information**

- Contours (5m)

**Roads**

- Gravel Road
- Track/Footpath

**Sensitivities**

- River Area
- Ecological Buffer (10m)

**Ecological Sensitivity**

- High
- Moderate
- Moderate - Low

**Version\_01**  
**20 February 2022**

