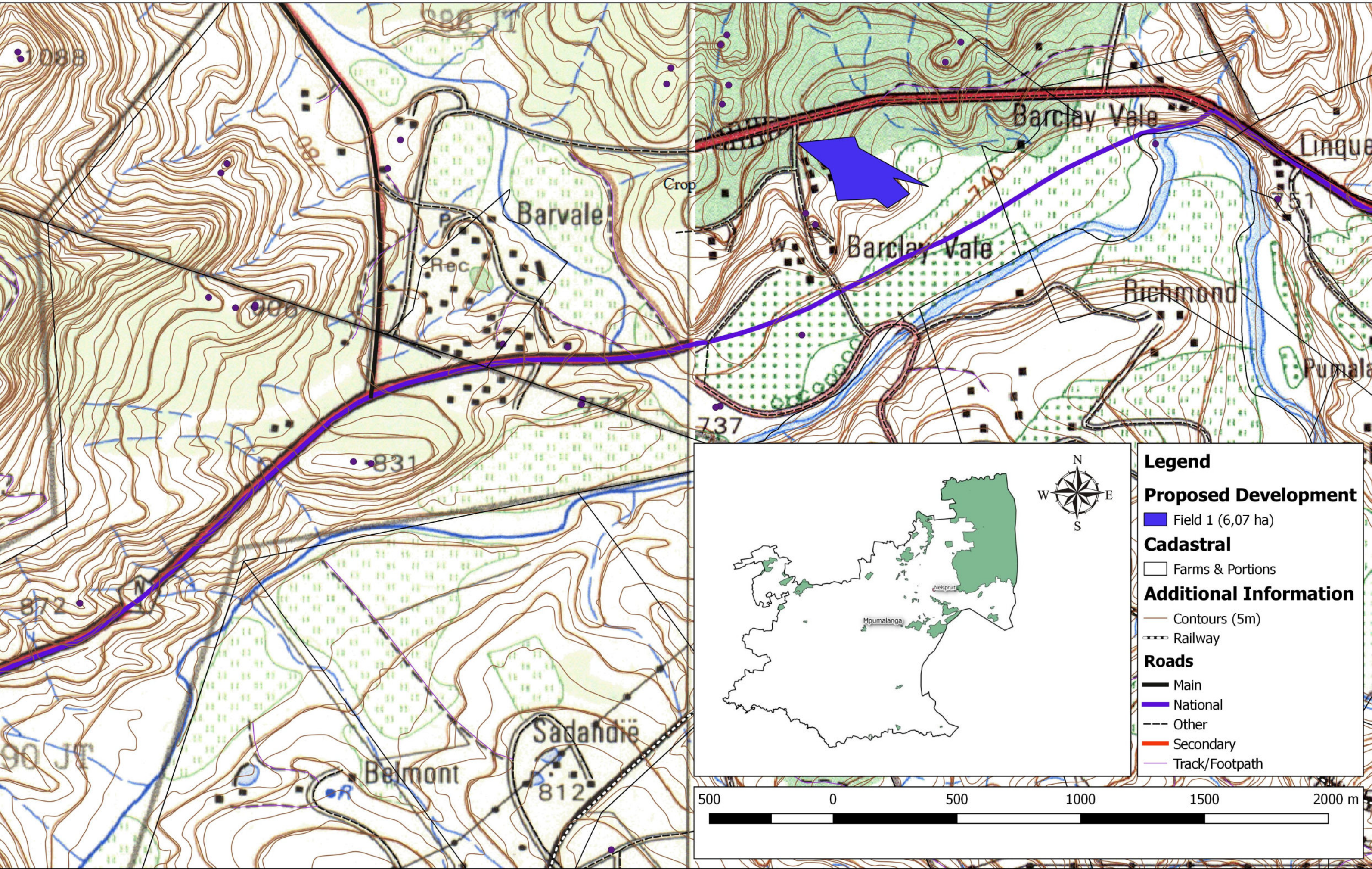


APPENDIX A: SITE PLAN(S)

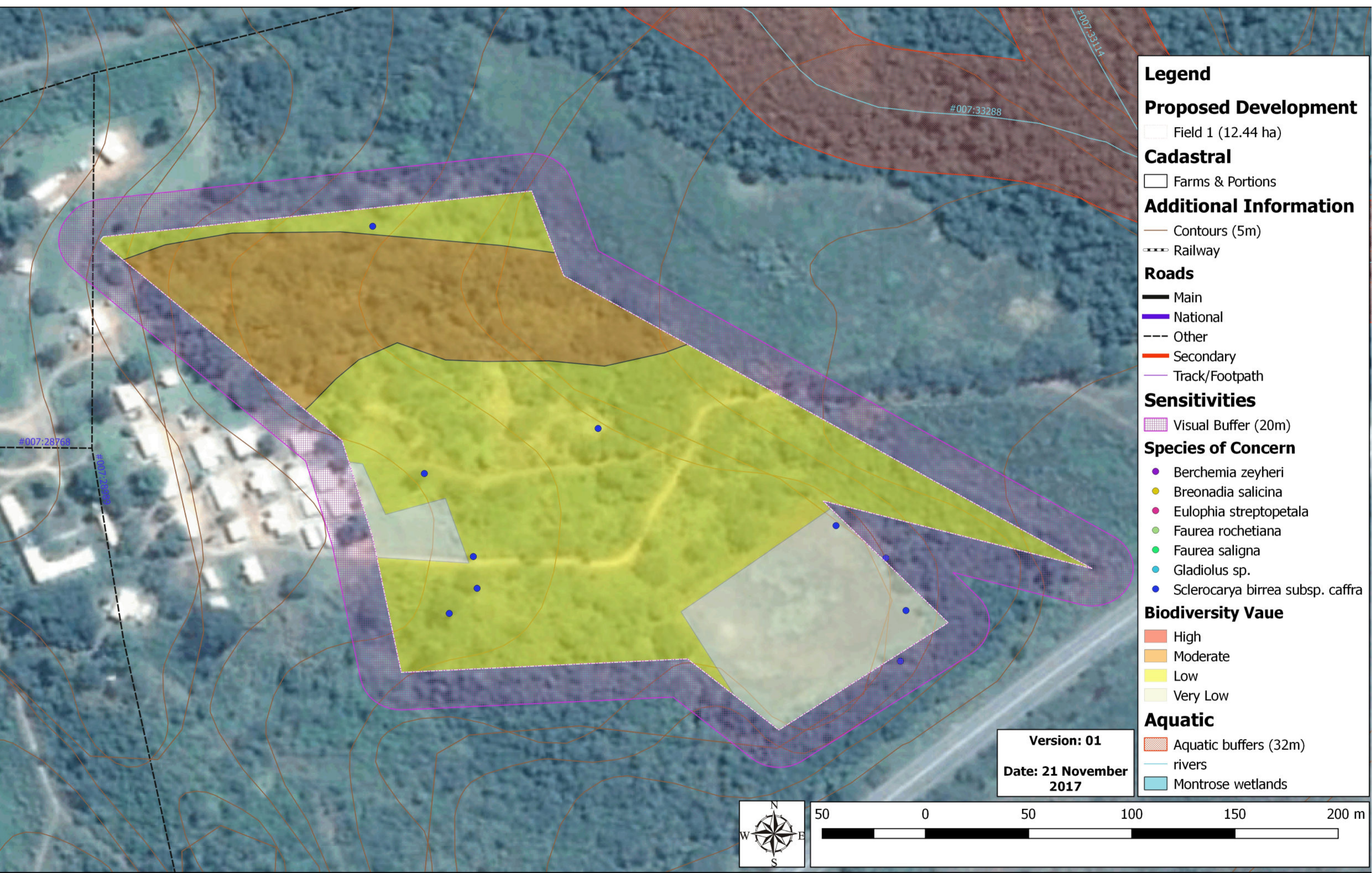
Annexure A: Locality Map

Locality Map - The clearing and cultivation of approximately 6.07 ha on the farm Barclay Vale 288 JT.



Annexure B: Preferred layout including onsite sensitivities

Locality Map - The clearing and cultivation of approximately 6.07 ha on the farm Barcaly Vale 288 JT.



Legend

Proposed Development
 Field 1 (12.44 ha)

Cadastral
 Farms & Portions

Additional Information
 Contours (5m)
 Railway

Roads
 Main
 National
 Other
 Secondary
 Track/Footpath

Sensitivities
 Visual Buffer (20m)

Species of Concern

- Berchemia zeyheri
- Breonadia salicina
- Eulophia streptopetala
- Faurea rochetiana
- Faurea saligna
- Gladiolus sp.
- Sclerocarya birrea subsp. caffra

Biodiversity Vaue

- High
- Moderate
- Low
- Very Low

Aquatic

- Aquatic buffers (32m)
- rivers
- Montrose wetlands

Version: 01
 Date: 21 November 2017

