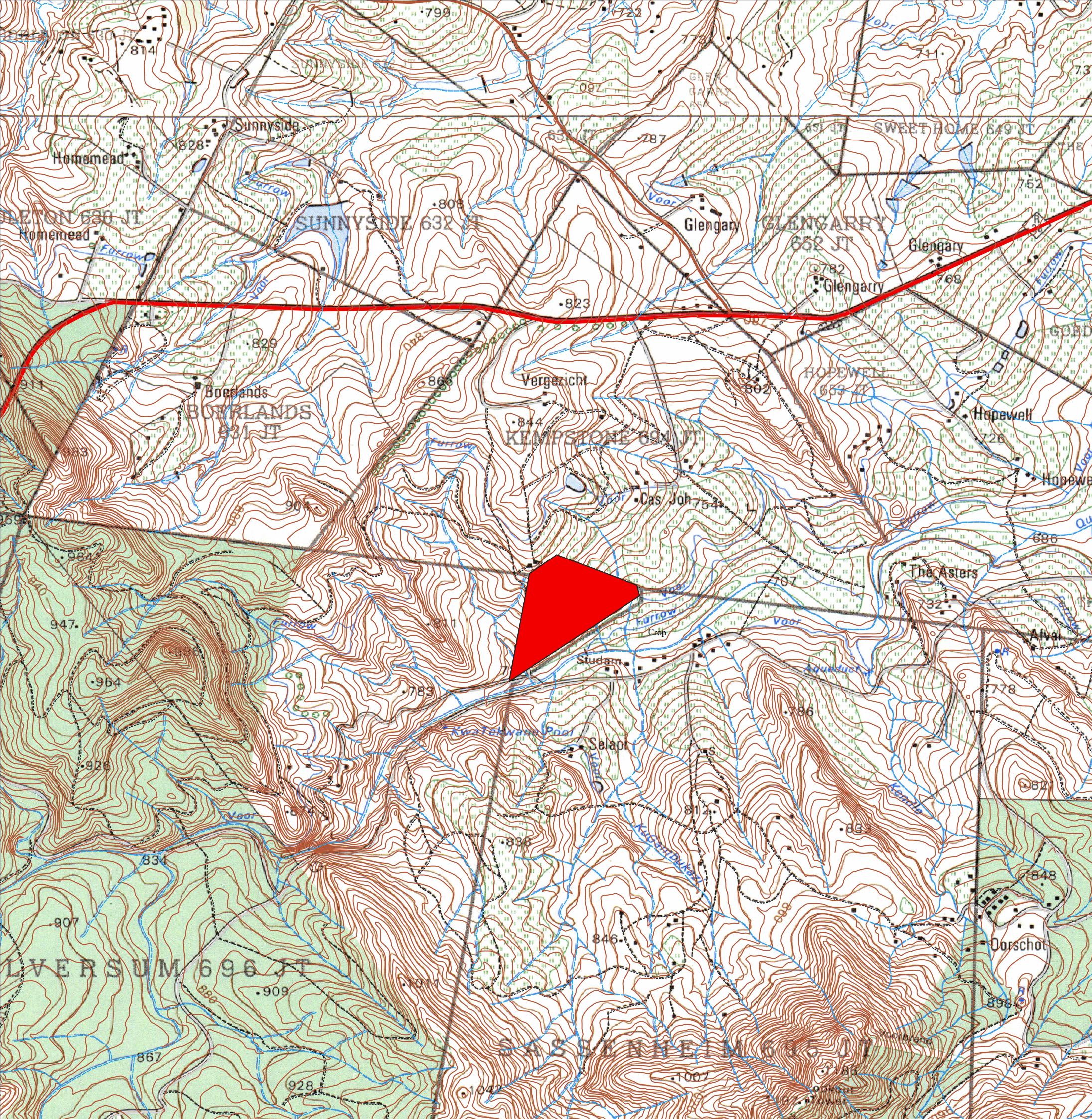


**APPENDIX A: SITE PLAN(S)**

Annexure A: Locality Map



# Locality Map for the proposed clearing of indigenous vegetation and cultivation on the Farm Uguhleni 698 JT.

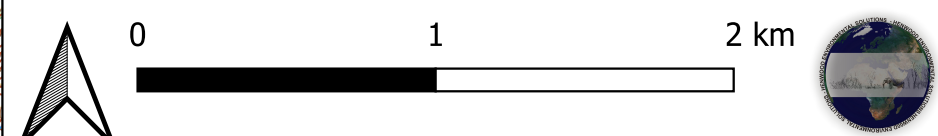
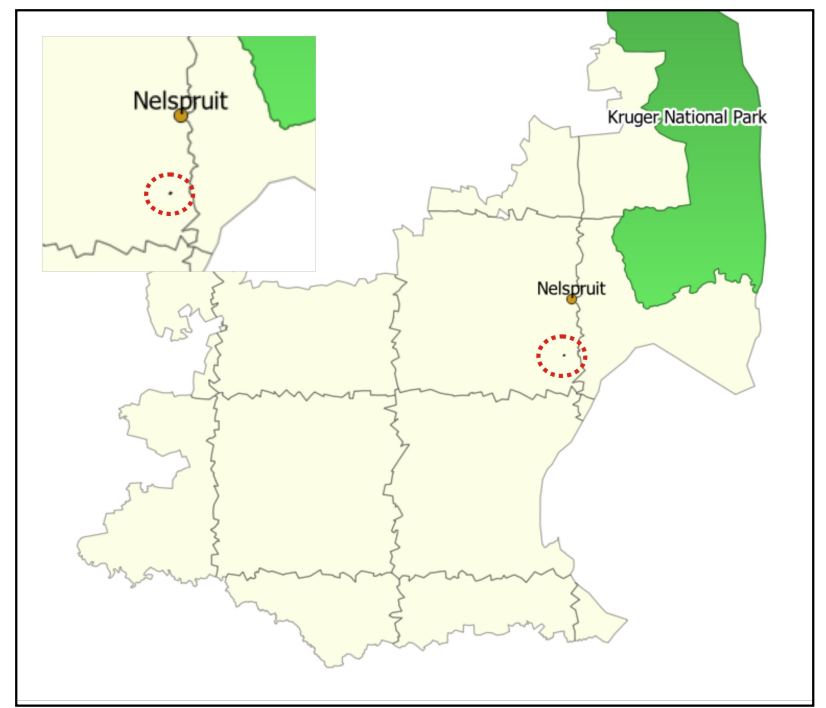


**Proposed Development**  
■ Property to cultivate

**Cadastral**  
□ Uguhleni 698 JT

**Sensitivities**  
--- Rivers  
--- Contours (5m)

**Roads**  
— Arterial  
— Secondary  
— Road  
- - - Track/Footpath





Annexure B: Preferred layout including onsite sensitivities



## Legend

### Proposed Development

 Proposed Agriculture

### Cadastral

 Uguhleni 698 JT

 Contours (5m)

### Roads

 Arterial

 Secondary

 Street

 Track/Footpath

### Sensitivities

 Combined Terrestrial & Aquatic 30m Buffer

### Aquatic Delineation

 Farm Dam

 Seep

 Upper Foothill

 Valley Bottom

### Ecological Sensitivity

 High

 Medium

 Low

 Very Low

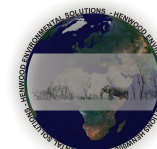
 River lines

Project:

**PROPOSED CLEARING OF  
INDIGENOUS VEGETATION  
AND CULTIVATION ON THE  
FARM UGUHLENI 698 JT.**

Title:

**Version\_02  
15 October 2022**



Henwood Environmental Solutions (Pty) Ltd  
P.O. Box 12340, Steiltes, Nelspruit, 1213

Email: shenwood@mweb.co.za

