



**Scatec Solar**  
Improving our future™

# **BASIC ASSESSMENT REPORT**

Basic Assessment for the proposed development of a 115 MW Solar Photovoltaic (PV) Facility and associated electrical infrastructure (i.e. Kenhardt PV 4), north-east of Kenhardt, in the Northern Cape

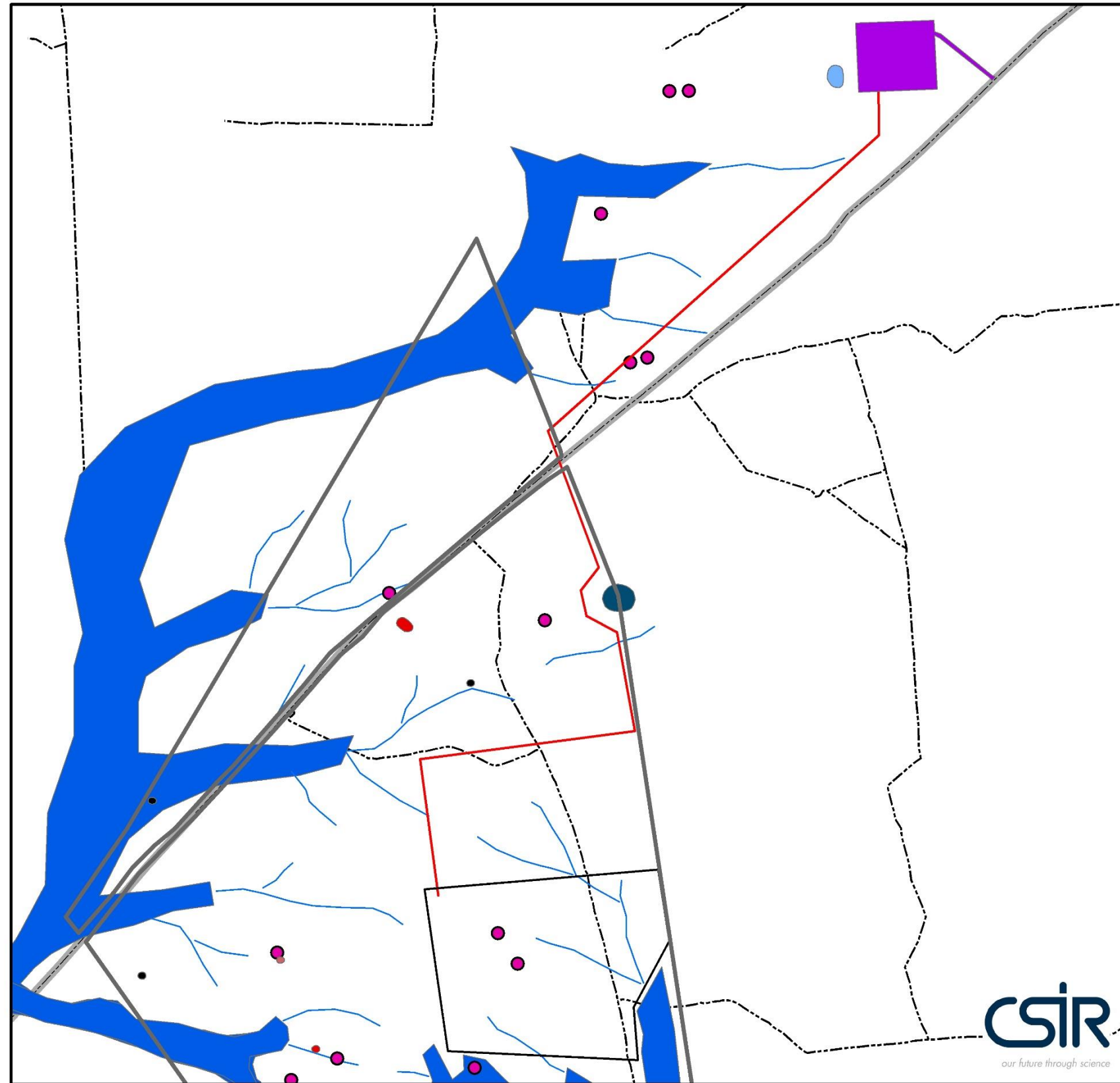


## **APPENDIX A: MAPS**

**SECTION F: APPENDICES**

Basic Assessment for the for the Proposed Development of the Scatec Kenhardt Solar PV4 project and associated electrical infrastructure, Kenhardt, Northern Cape.

**Map 1 - Environmental sensitivity map**



**Legend**

Remaining extent Onder Rugzeer Farm Nr 168

**Kenhardt PV development**

PV4 - Proposed development footprint

Nieuwehoop substation

PV4 - HV line routing

**Heritage sensitivities**

Later Stone Age site on quartz outcrop

Koppie

Pan

Graves

Later Stone Age artefact scatter

**Ecological sensitivities**

Aloes

Minor drainage lines

Major drainage lines

**Roads**

Arterial route

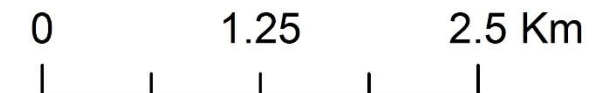
Main road

Other access

Secondary road

Street

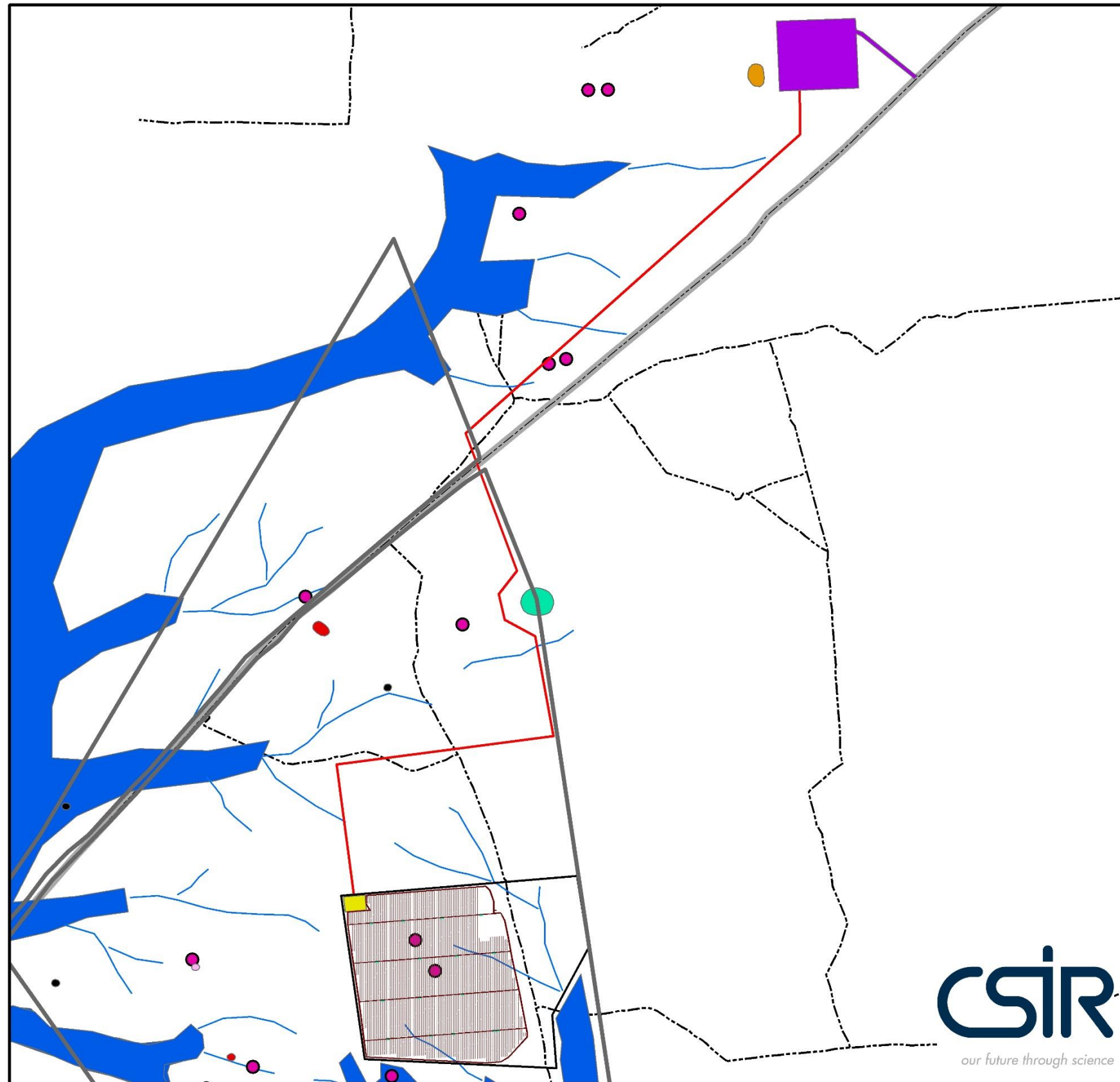
Gravel access road



**SECTION F: APPENDICES**

Basic Assessment for the for the Proposed Development of the Scatec Kenhardt Solar PV4 project and associated electrical infrastructure, Kenhardt, Northern Cape.

**Map 2 - Environmental sensitivity map overlain with preferred layout**



**Legend**

□ Remaining extent Onder Rugzeer Farm Nr 168

**Kenhardt PV development**

□ PV4 - Proposed development footprint

■ Nieuwehoop substation

**Kenhardt PV4 development infrastructure**

■ Substation

■ Power stations

■ PV structures

— PV4 - HV line routing

**Heritage sensitivities**

■ Later Stone Age site on quartz outcrop

■ Koppie

■ Pan

■ Graves

■ Later Stone Age artefact scatter

**Ecological sensitivities**

● Aloes

— Minor drainage lines

— Major drainage lines

**Roads**

— Arterial route

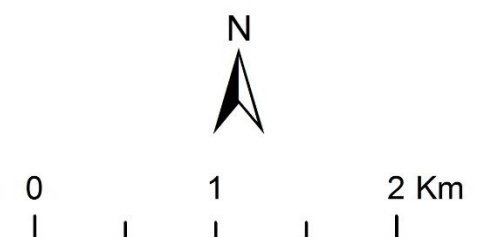
— Main road

— Other access

— Secondary road

— Street

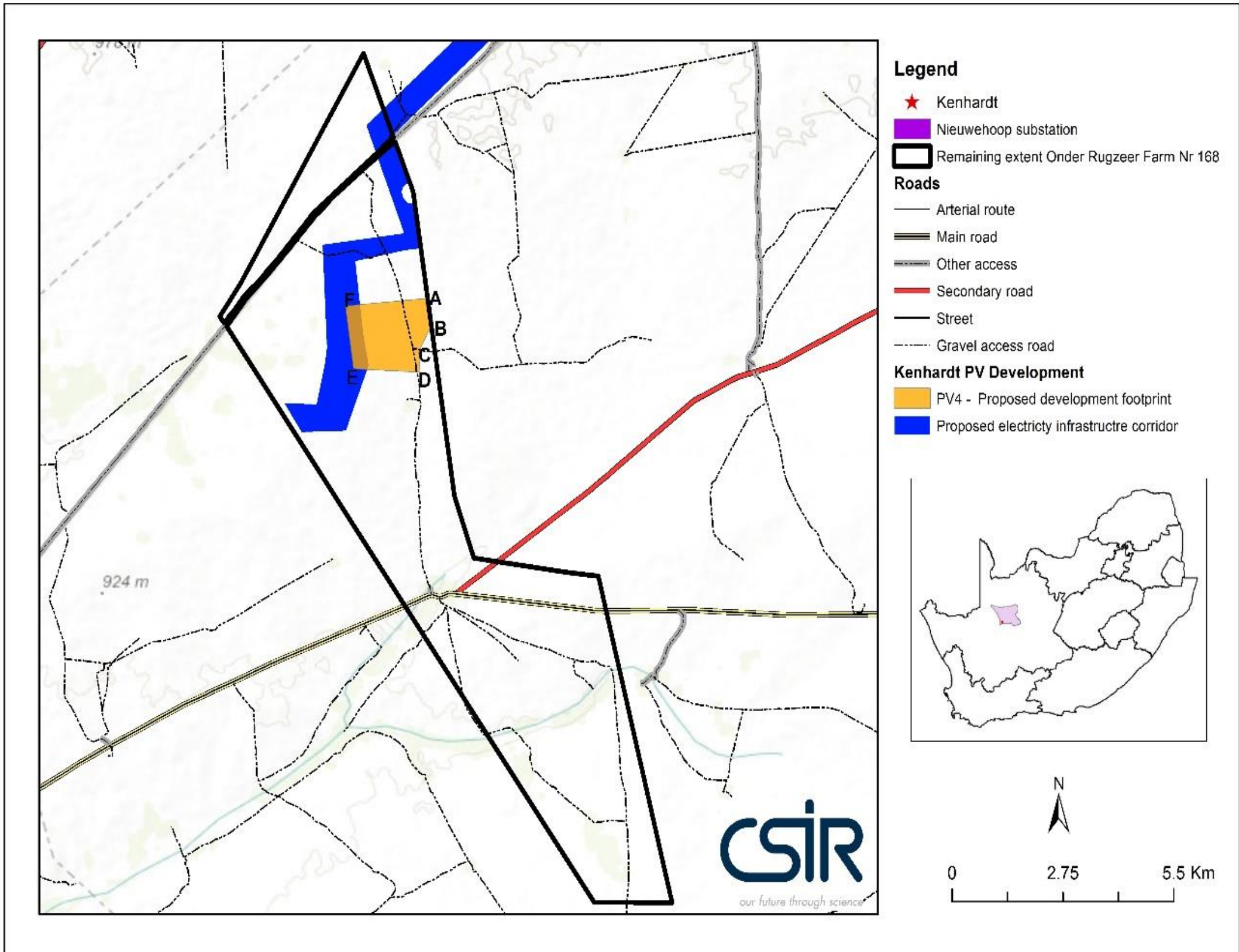
--- Gravel access road



## SECTION F: APPENDICES

Basic Assessment for the for the Proposed Development of the Scatec Kenhardt Solar PV4 project and associated electrical infrastructure, Kenhardt, Northern Cape.

**Map 3 and 4 – Corner and line-co-ordinates for the PV footprint and power corridor**



| Point | Latitude      | Longitude     |
|-------|---------------|---------------|
|       | Solar Field   |               |
| A     | 29°12'46.12"S | 21°19'9.82"E  |
| B     | 29°13'6.21"S  | 21°19'12.91"E |
| C     | 29°13'24.83"S | 21°19'2.88"E  |
| D     | 29°13'39.65"S | 21°19'4.04"E  |
| E     | 29°13'37.17"S | 21°18'10.64"E |
| F     | 29°12'51.65"S | 21°18'4.07"E  |

## SECTION F: APPENDICES

Basic Assessment for the for the Proposed Development of the Scatec Kenhardt Solar PV4 project and associated electrical infrastructure, Kenhardt, Northern Cape.

