

BASIC ASSESSMENT REPORT

Basic Assessment for the proposed development of a 115 MW Solar Photovoltaic (PV) Facility and associated electrical infrastructure (i.e. Kenhardt PV 5), north-east of Kenhardt, in the Northern Cape

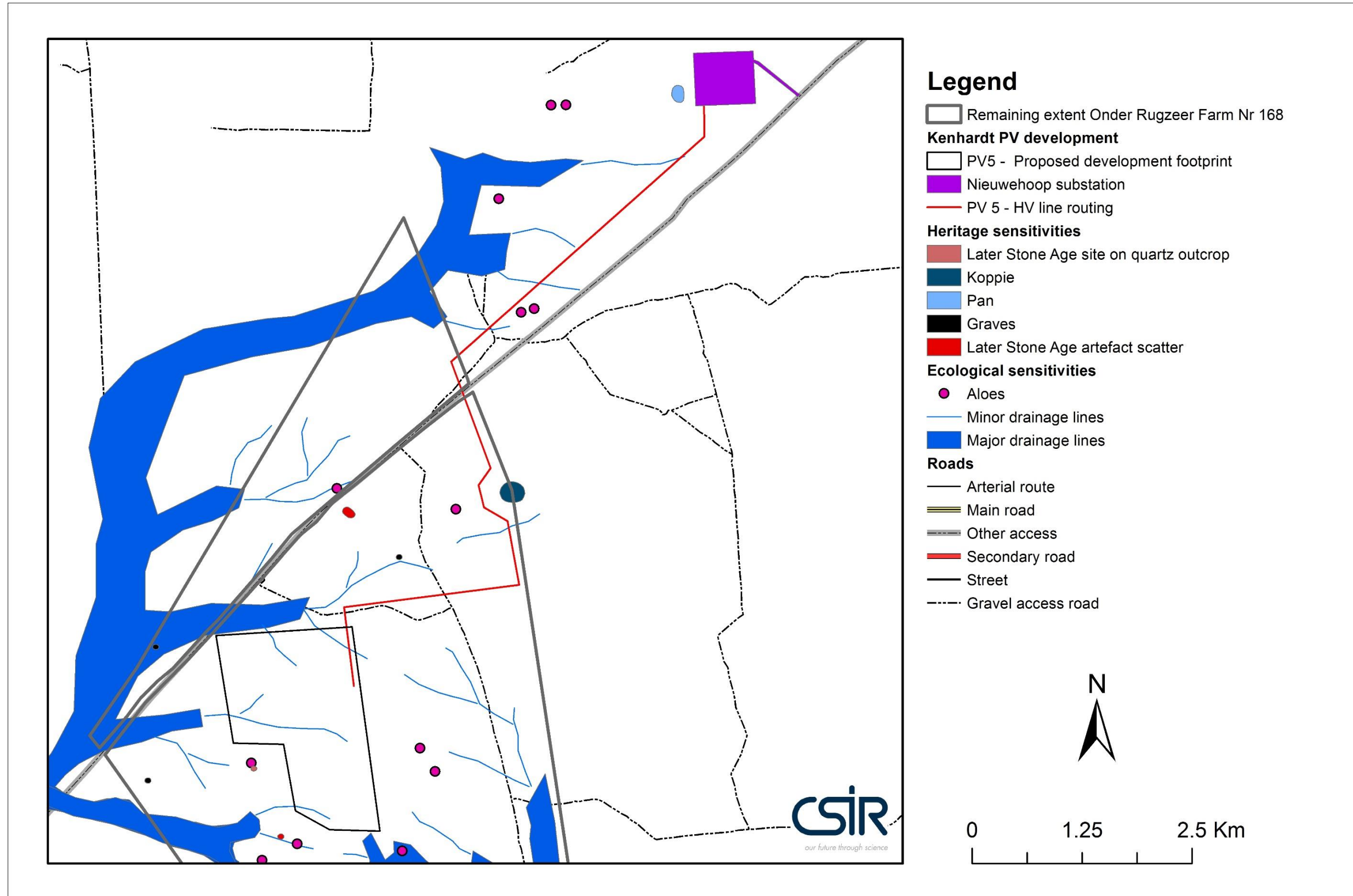


APPENDIX A: MAPS

SECTION F: APPENDICES

Basic Assessment for the for the Proposed Development of the Scatec Kenhardt Solar PV5 project and associated electrical infrastructure, Kenhardt, Northern Cape.

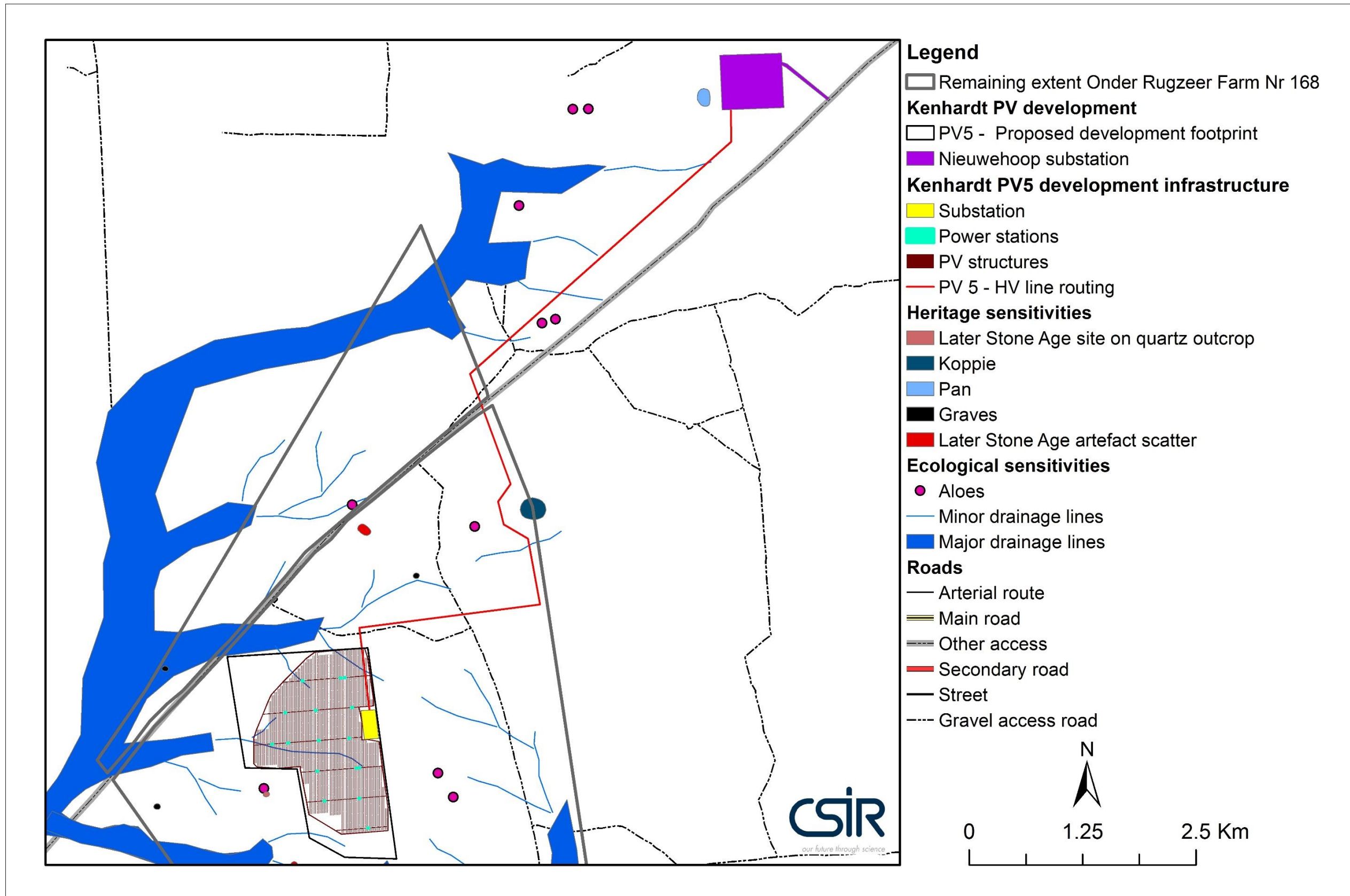
Map 1 - Environmental sensitivity map



SECTION F: APPENDICES

Basic Assessment for the for the Proposed Development of the Scatec Kenhardt Solar PV5 project and associated electrical infrastructure, Kenhardt, Northern Cape.

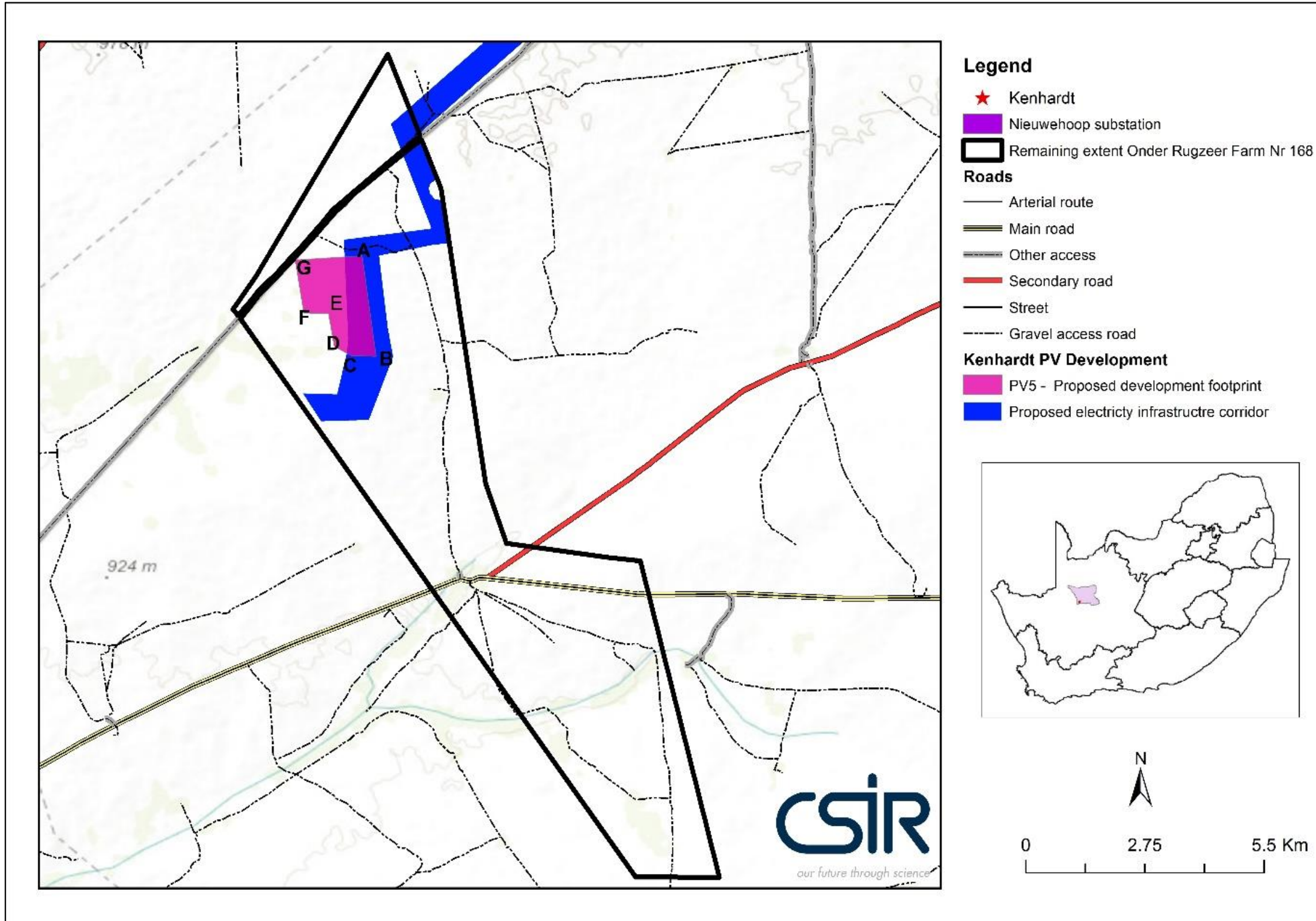
Map 2 - Environmental sensitivity map overlain with preferred layout



SECTION F: APPENDICES

Basic Assessment for the for the Proposed Development of the Scatec Kenhardt Solar PV5 project and associated electrical infrastructure, Kenhardt, Northern Cape.

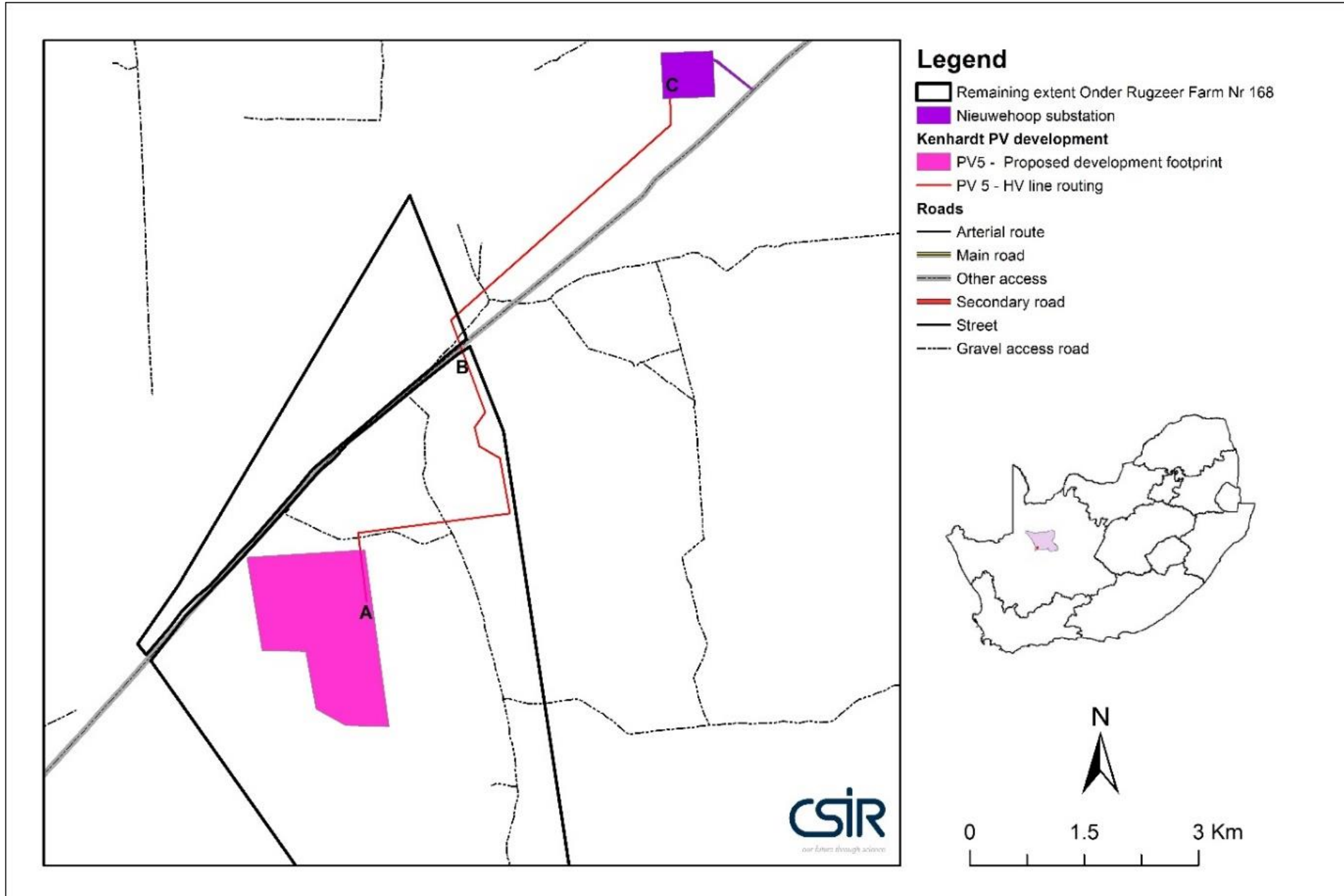
Map 3 & 4 – Corner and line co-ordinates for the PV area and power corridor



Point	Latitude	Longitude
Solar Field		
A	29°12'19.40"S	21°17'59.68"E
B	29°13'34.55"S	21°18'9.96"E
C	29°13'34.03"S	21°17'51.46"E
D	29°13'27.08"S	21°17'38.87"E
E	29°13'2.57"S	21°17'34.48"E
F	29°13'2.17"S	21°17'15.94"E
G	29°12'22.55"S	21°17'9.56"E

SECTION F: APPENDICES

Basic Assessment for the for the Proposed Development of the Scatec Kenhardt Solar PV5 project and associated electrical infrastructure, Kenhardt, Northern Cape.



Point	Latitude	Longitude
	Line routing	
A	29°12'41.19"S	21°18'0.32"E
B	29°11'1.87"S	21°18'43.61"E
C	29° 9'1.60"S	21°20'9.24"E