

BASIC ASSESSMENT REPORT

Basic Assessment for the proposed development of a 115 MW Solar Photovoltaic (PV) Facility and associated electrical infrastructure (i.e. Kenhardt PV 6), north-east of Kenhardt, in the Northern Cape

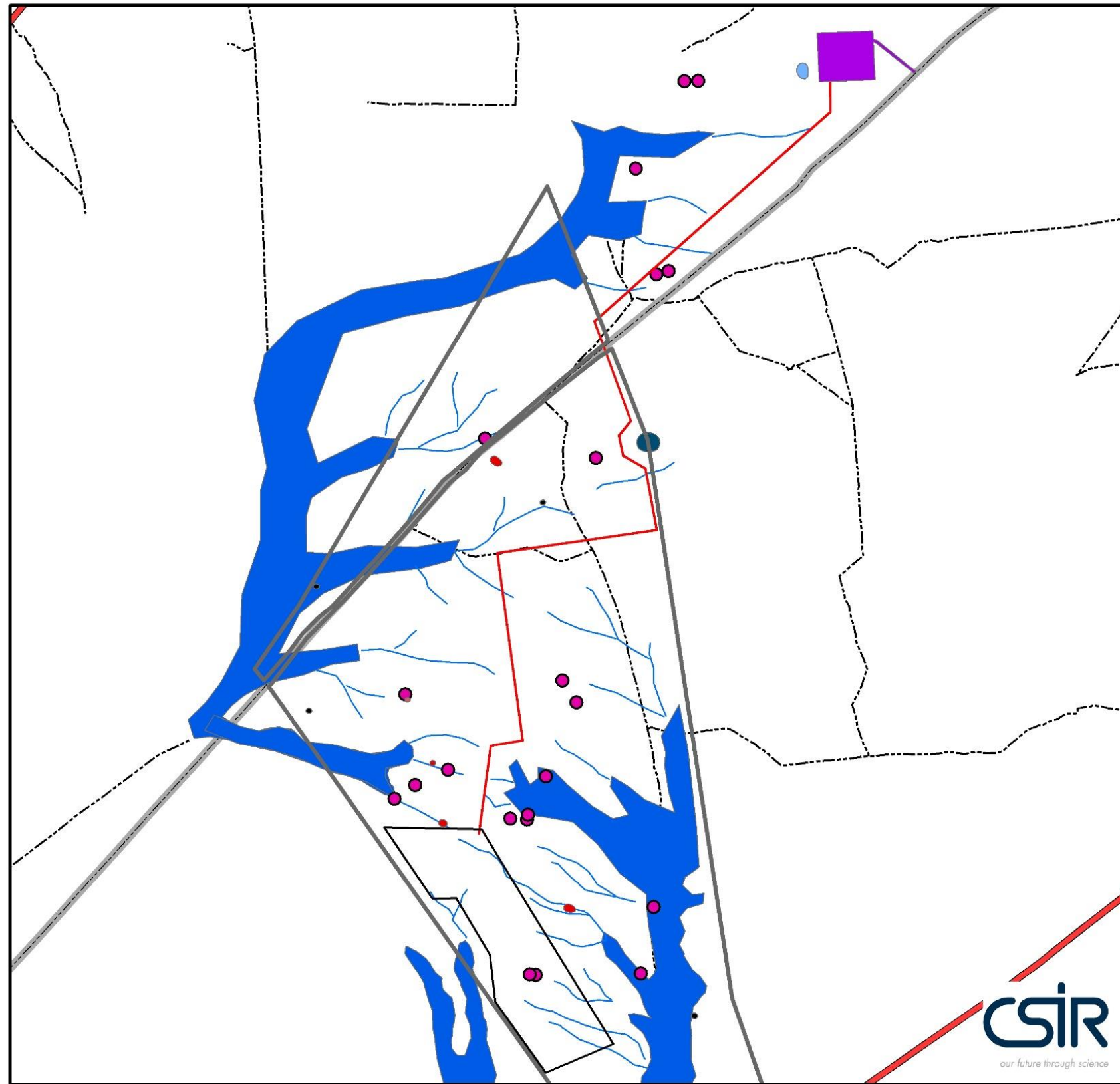


APPENDIX A: MAPS

SECTION F: APPENDICES

Basic Assessment for the for the Proposed Development of the Scatec Kenhardt Solar PV6 project and associated electrical infrastructure, Kenhardt, Northern Cape.

Map 1 - Environmental sensitivity map



Legend

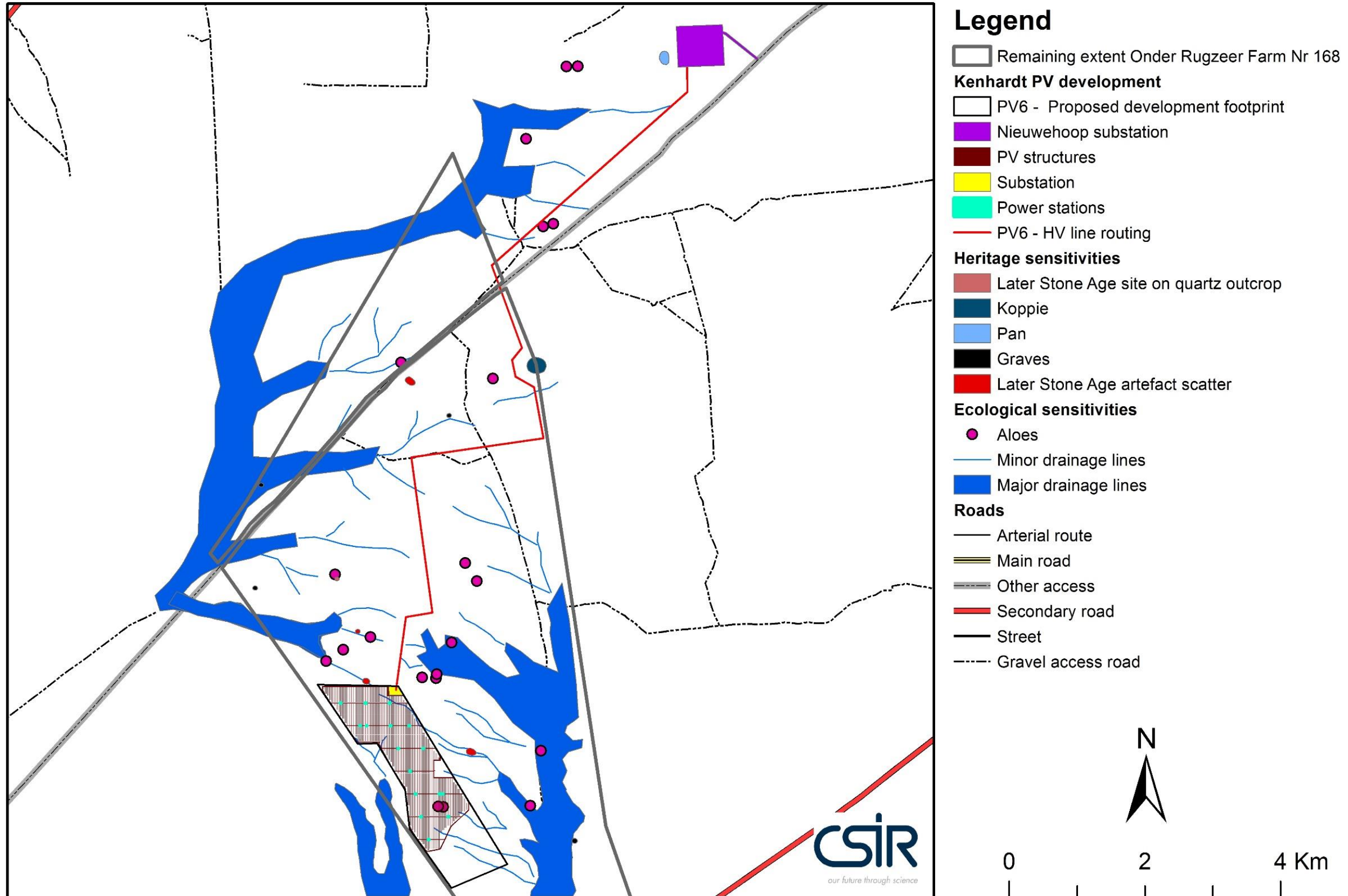
- Remaining extent Onder Rugzeer Farm Nr 168
- Kenhardt PV development**
- PV6 - Proposed development footprint
- Nieuwehoop substation
- PV6 - HV line routing
- Heritage sensitivities**
- Later Stone Age site on quartz outcrop
- Koppie
- Pan
- Graves
- Later Stone Age artefact scatter
- Ecological sensitivities**
- Aloes
- Minor drainage lines
- Major drainage lines
- Roads**
- Arterial route
- Main road
- Other access
- Secondary road
- Street
- Gravel access road



SECTION F: APPENDICES

Basic Assessment for the for the Proposed Development of the Scatec Kenhardt Solar PV6 project and associated electrical infrastructure, Kenhardt, Northern Cape.

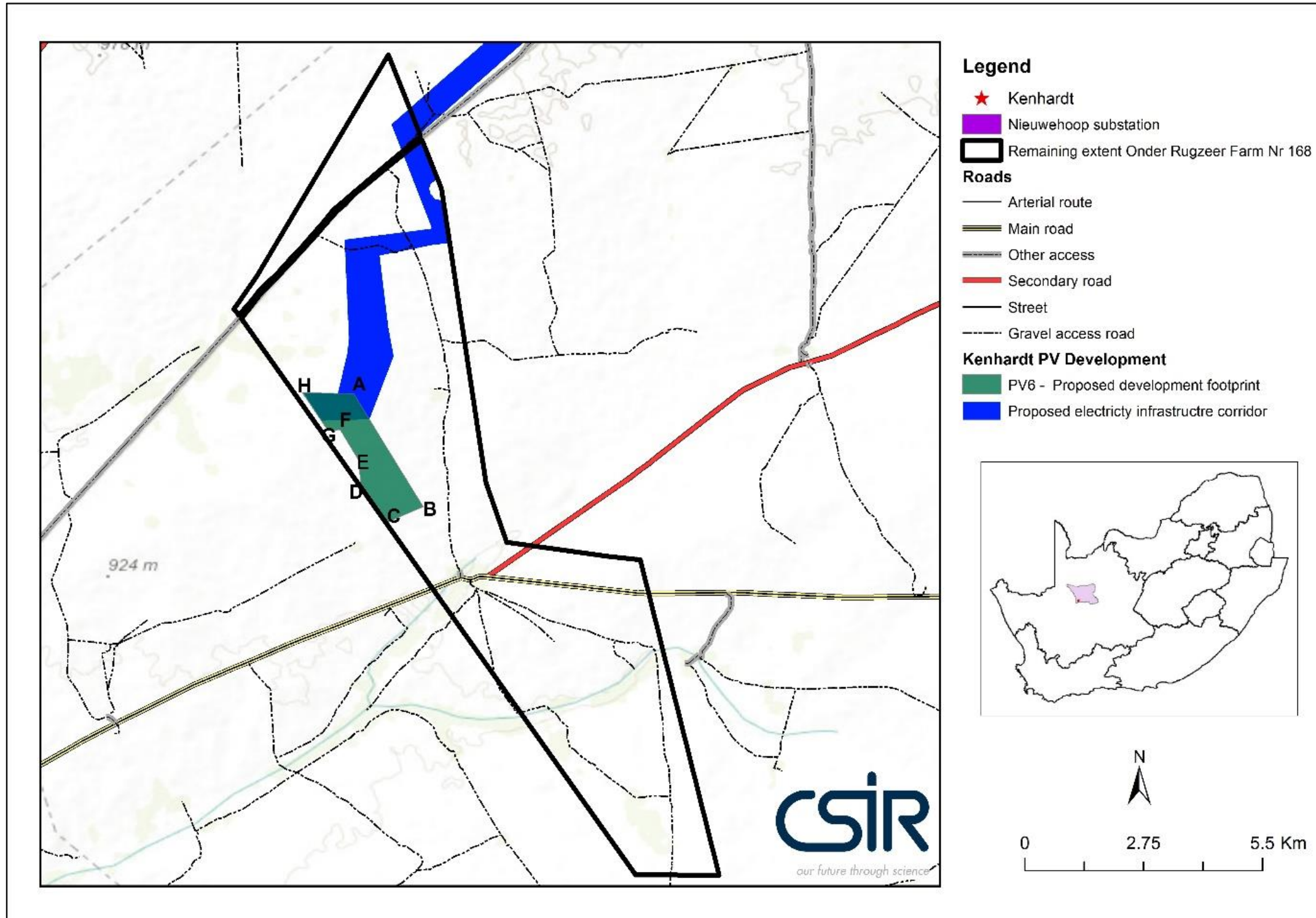
Map 2 - Environmental sensitivity map overlain with preferred layout



SECTION F: APPENDICES

Basic Assessment for the for the Proposed Development of the Scatec Kenhardt Solar PV6 project and associated electrical infrastructure, Kenhardt, Northern Cape.

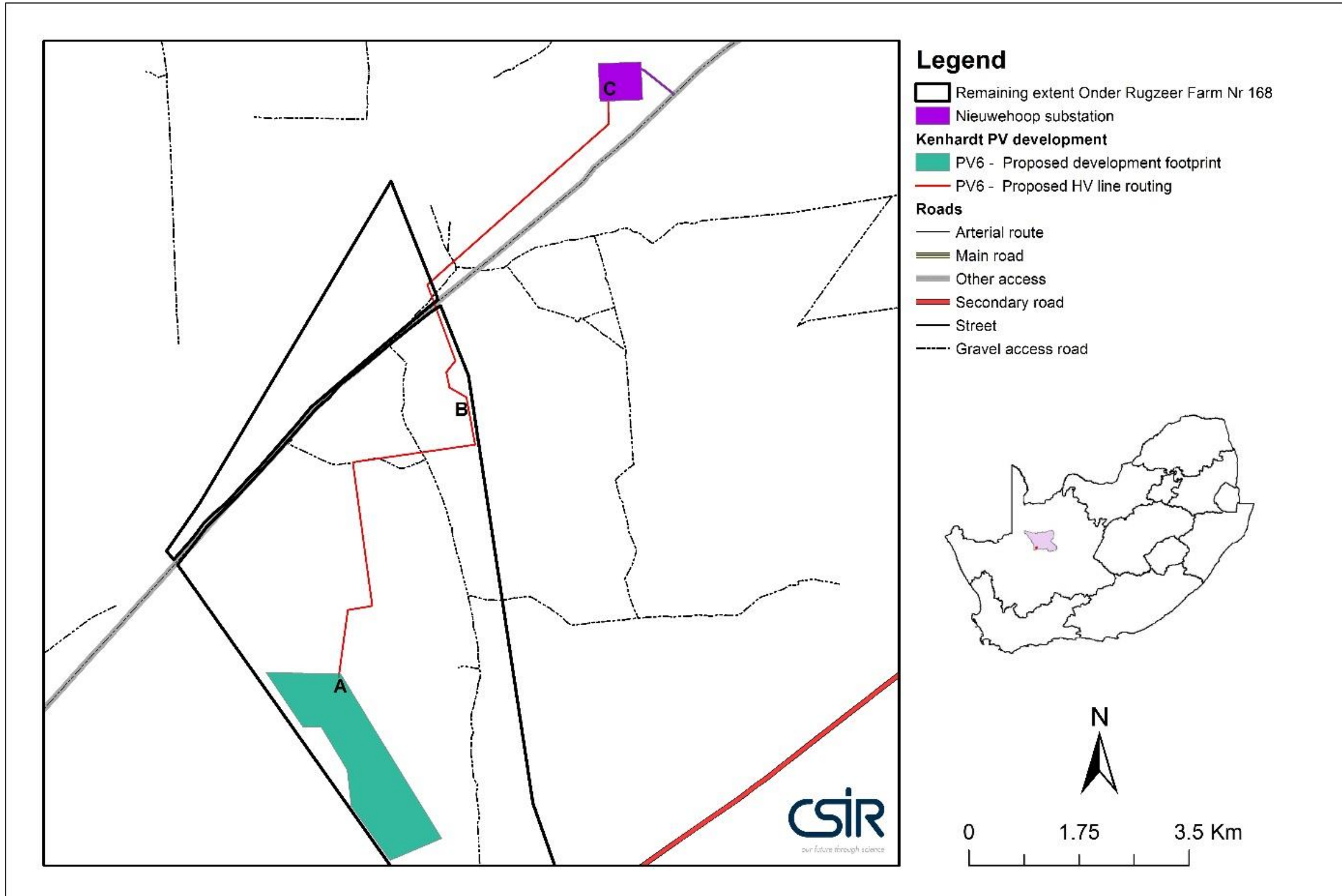
Map 3 & 4 – Co-ordinates of the corner poitns of the PV area and power corridor



Point	Latitude	Longitude
Solar Field		
A	29°14'2.72"S	21°17'52.80"E
B	29°15'27.48"S	21°18'44.84"E
C	29°15'38.84"S	21°18'18.16"E
D	29°15'10.73"S	21°17'58.16"E
E	29°14'52.21"S	21°17'56.08"E
F	29°14'29.93"S	21°17'42.69"E
G	29°14'30.17"S	21°17'33.41"E
H	29°14'1.99"S	21°17'14.34"E

SECTION F: APPENDICES

Basic Assessment for the for the Proposed Development of the Scatec Kenhardt Solar PV6 project and associated electrical infrastructure, Kenhardt, Northern Cape.



Point	Latitude	Longitude
	Line routing	
A	29°14'4.48"S	21°17'51.72"E
B	29°11'41.03"S	21°18'57.71"E
C	29° 9'0.93"S	21°20'10.34"E