

**EMTHANJENI LOCAL MUNICIPALITY
NORTHERN CAPE**

**BRITSTOWN PV CLUSTER
-
SOYUZ 4 PV
SOLAR PARK**

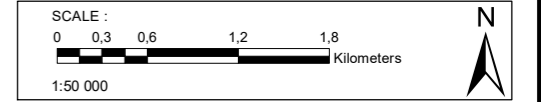
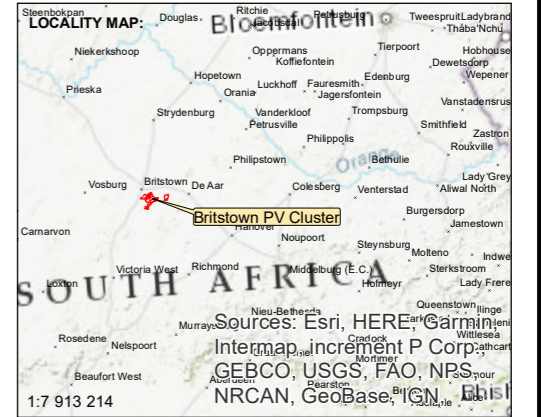
CADASTRAL MAP

Legend

- Electrical serviture line
- SOYUZ 4 proposed access road
- SOYUZ 4 proposed development area
- Britstown PV Cluster

- Central Places**

- National Route
- Arterial Route
- Secondary Road




DATE: MARCH 2023

MAP REFERENCE/ VERSION NUMBER:

COORDINATE SYSTEM : Municipal WGS84 (Lo31)

PREPARED BY:

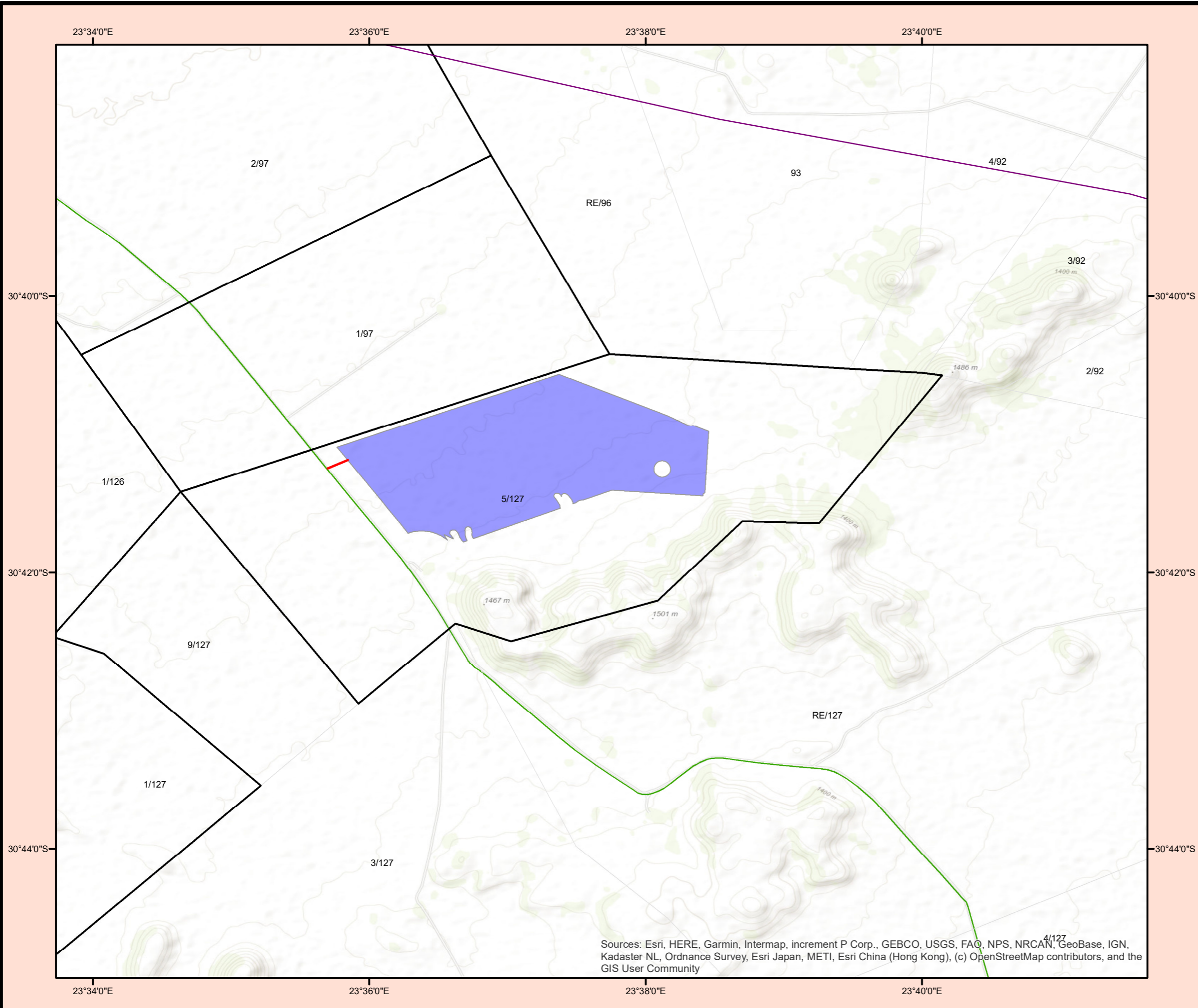


WPP
TOWN AND REGIONAL PLANNING CONSULTANTS

Warren Petterson Planning
1 Bridgeway, Business Centre
Century City, Cape Town
Matrix Building, 3rd Floor, Office 3H
7411

PO Box 152
Century City
7446

Tel : + 27 (0) 21 552 5255
Fax : + 27 (0) 86 537 9187
E-mail: andries@wppanning.co.za



Sources: Esri, HERE, Garmin, Intermap, increment P Corp., GEBCO, USGS, FAO, NPS, NRCAN, GeoBase, IGN, Kadaster NL, Ordnance Survey, Esri Japan, METI, Esri China (Hong Kong), (c) OpenStreetMap contributors, and the GIS User Community