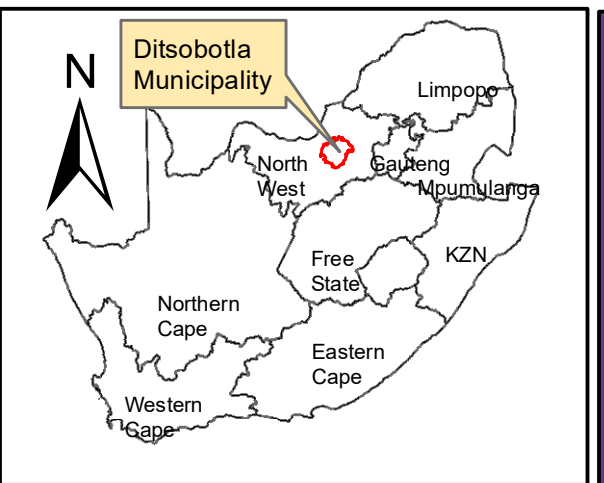


Critical Biodiversity Areas (CBA)

Aquatic CBA		Terrestrial CBA	
	CBA1		CBA1
	CBA2		CBA2
	ESA1		ESA1
	ESA2		ESA2



Aristida PV Portions 7 of Farm 34 Elandsfontein

Legend

- Portion_7_of_34
- Site Access
- Aristida PV
- Aristida Substation
- MAIN ROAD
- OTHER ACCESS
- Perennial Rivers
- Non-Perennial Rivers

Notes

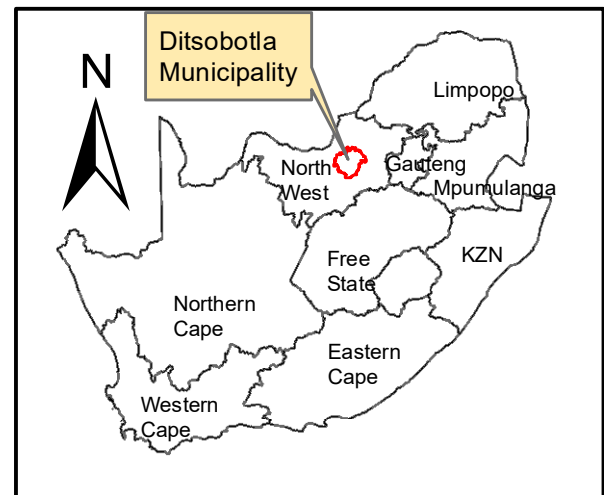
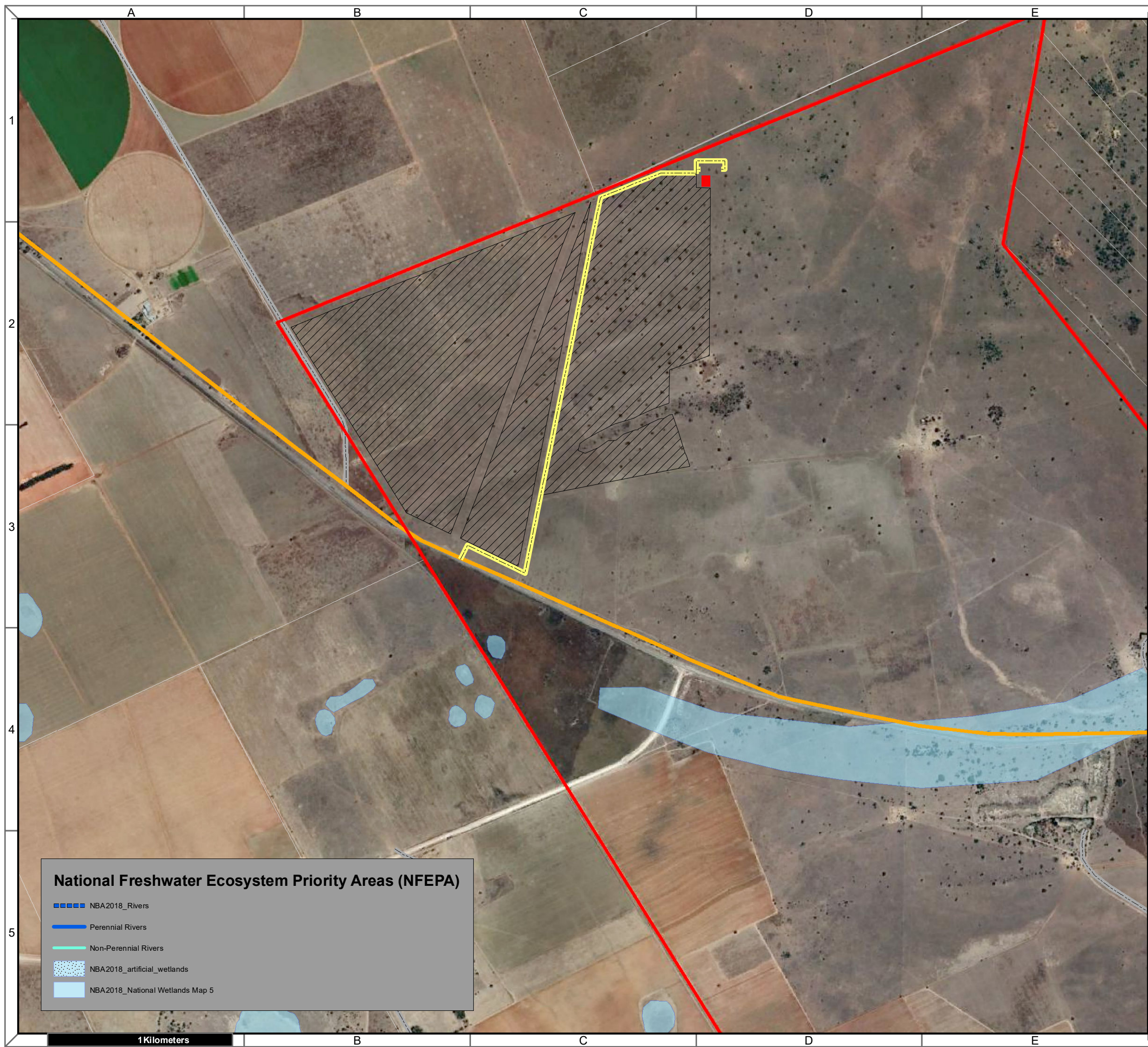
- Map Scale is 1: 20 000 when printed on A3
- Aerial image courtesy of Google Earth Pro 2021
- Imagery date September 2021
- Biodiversity data courtesy of SANBI BGIS 2020
- North West CBA 2015 dataset

Map Drawn By:	Date	Reference
Melissa Mackay	2022/08/13	DIT725

Cape Environmental Assessment Practitioners (Pty) Ltd
 Reg. No. 2008/004627/07
 Telephone: +27 44 874 0365
 Facsimile: +27 44 874 0432
 Web: www.cape-eaprac.co.za
 17 Progress St
 PO Box 2070
 George 6530

CRITICAL BIODIVERSITY AREAS

1Kilometers



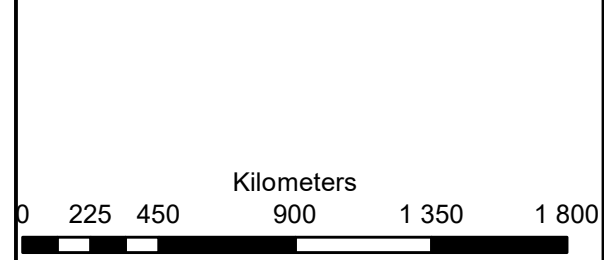
Aristida PV
Portions 7 of Farm 34
Elandsfontein

Legend

- Portion_7_of_34
- Site Access
- Aristida PV
- Aristida Substation
- MAIN ROAD
- OTHER ACCESS

Notes

- Map Scale is 1: 20 000 when printed on A3
- Aerial image courtesy of Google Earth Pro 2022
- Imagery date September 2021
- Biodiversity data courtesy of SANBI BGIS 2020



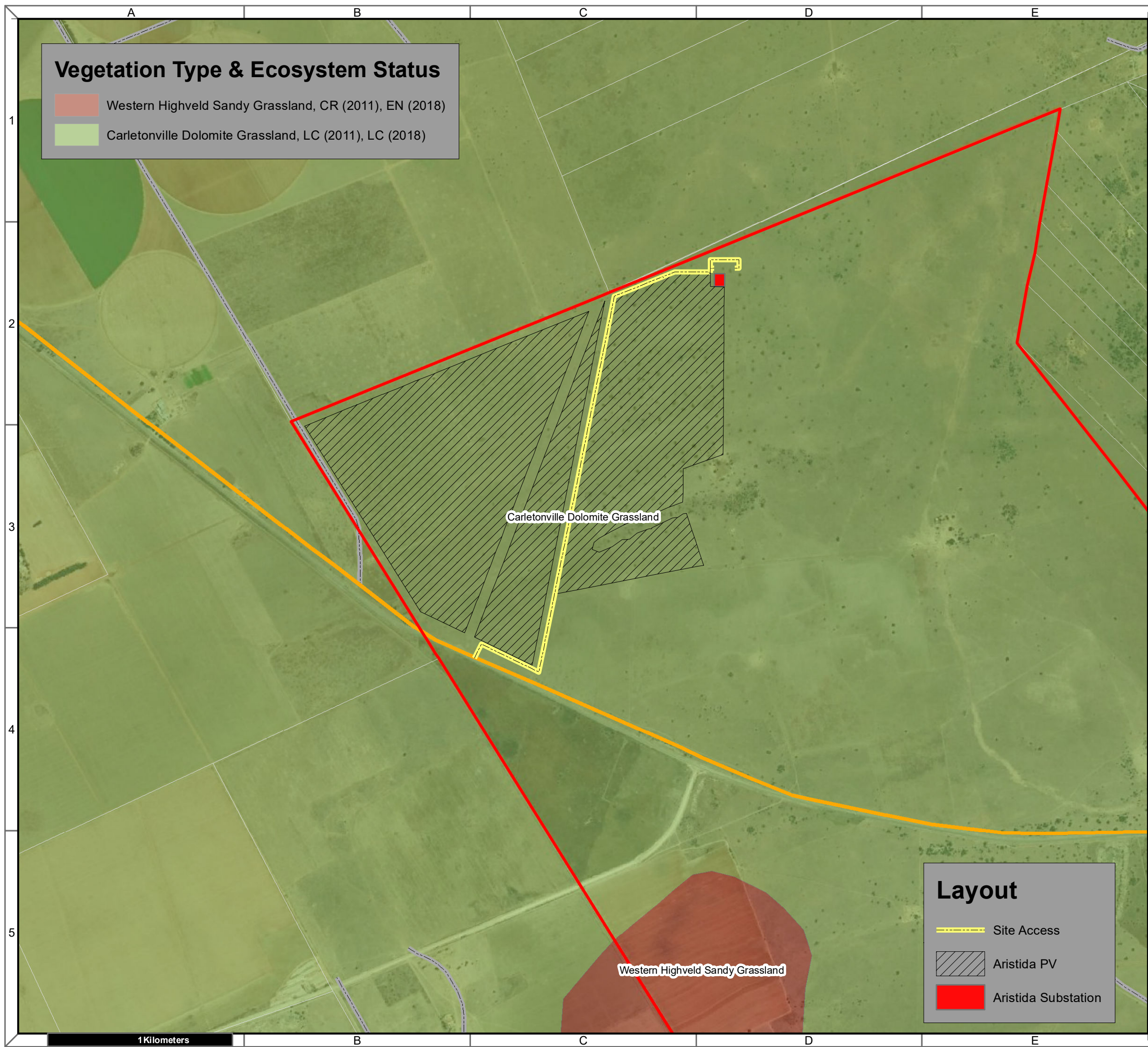
Map Drawn By:	Date	Reference
Melissa Mackay	2022/08/13	DIT725

Cape Environmental Assessment Practitioners (Pty) Ltd
 Reg. No. 2008/004627/07

Telephone: +27 44 874 0365
 Facsimile: +27 44 874 0432
 Web: www.cape-eaprac.co.za

17 Progress St
 PO Box 2070
 George 6530

NATIONAL FRESHWATER ECOSYSTEM PRIORITY AREAS (NFEPA)

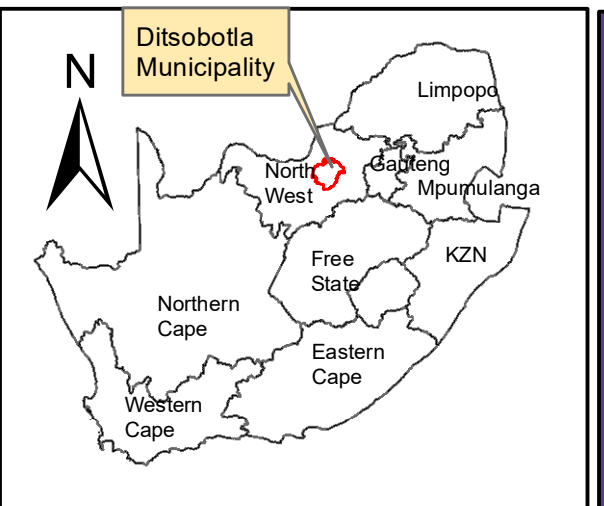


Vegetation Type & Ecosystem Status

- Western Highveld Sandy Grassland, CR (2011), EN (2018)
- Carletonville Dolomite Grassland, LC (2011), LC (2018)

Layout

- Site Access
- Aristida PV
- Aristida Substation



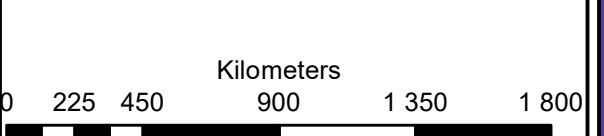
Aristida PV
Portions 7 of Farm 34
Elandsfontein

Legend

- Portion_7_of_34
- Perennial Rivers
- Non-Perennial Rivers
- MAIN ROAD
- OTHER ACCESS

Notes

- Map Scale is 1: 20 000 when printed on A3
- Aerial image courtesy of Google Earth Pro 2021
- Imagery date September 2021
- Biodiversity data courtesy of SANBI BGIS 2020
- 2018 Threat Status Assessment (Skowno, A et al August 2019)
- LC (Least Concern), VU (Vulnerable), EN (Endangered), CR (Critically Endangered)



Map Drawn By:	Date	Reference
Melissa Mackay	2022/08/13	DIT725

Cape Environmental Assessment Practitioners (Pty) Ltd
 Reg. No. 2008/004627/07
 Telephone: +27 44 874 0365
 Facsimile: +27 44 874 0432
 Web: www.cape-eaprac.co.za
 17 Progress St
 PO Box 2070
 George 6530

VEGETATION TYPE & ECOSYSTEM STATUS