

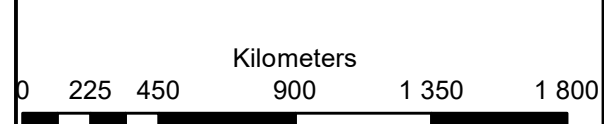
**Doornhoek PV 1
Portion 18 of Farm Doornhoek 372
Klerksdorp**

Legend

- Doornhoek PV 1
- Portion_18_of_372
- Perennial Rivers
- Non-Perennial Rivers
- SECONDARY ROAD
- OTHER ACCESS
- POWER LINE SINGLE

Notes

- Map Scale is 1: 20 000 when printed on A3
- Aerial image courtesy of Google Earth Pro 2021
- Imagery date Junel 2021
- Biodiversity data courtesy of SANBI BGIS 2020
- North West CBA 2015 dataset



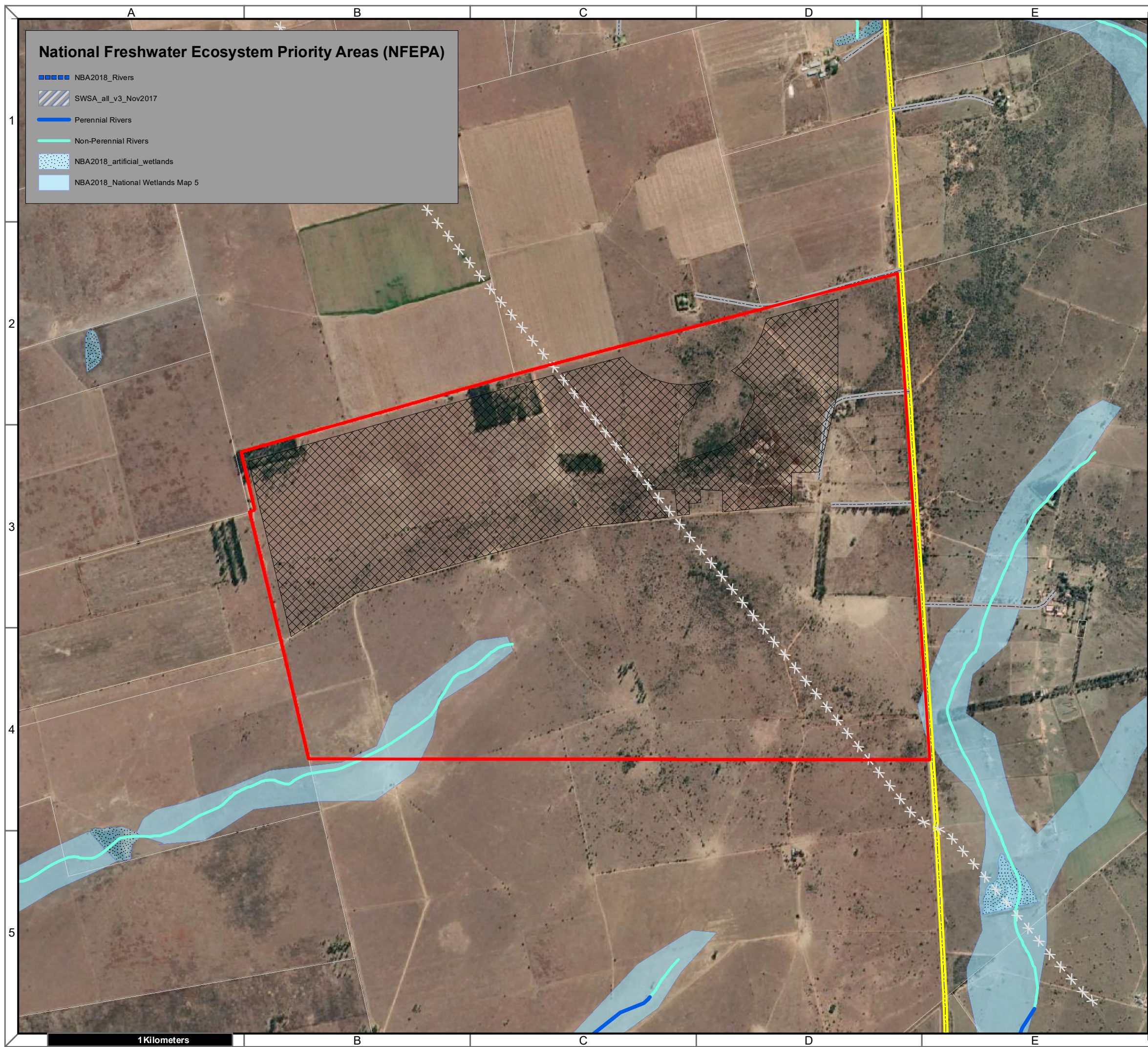
Map Drawn By:	Date	Reference
Melissa Mackay	2022/04/20	CML734

Critical Biodiversity Areas (CBA)

Aquatic CBA	Terrestrial CBA
CBA1	CBA1
CBA2	CBA2
ESA1	ESA1
ESA2	ESA2

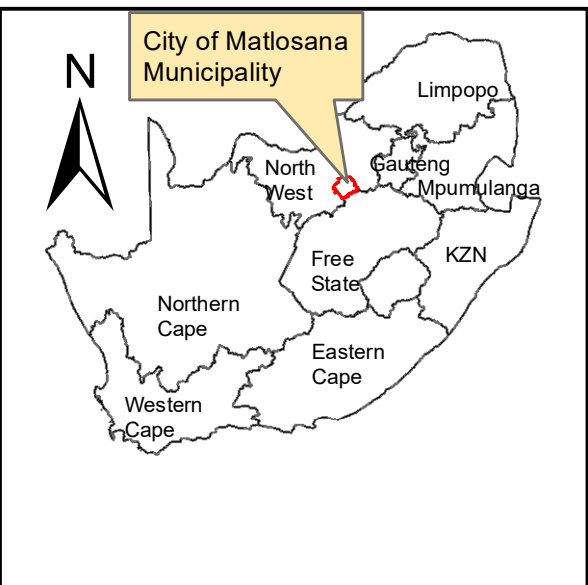
CRITICAL BIODIVERSITY AREAS

Cape Environmental Assessment Practitioners (Pty) Ltd
 Telephone: +27 44 874 0365
 Facsimile: +27 44 874 0432
 Web: www.cape-eaprac.co.za
 17 Progress St
 PO Box 2070
 George 6530



National Freshwater Ecosystem Priority Areas (NFEPA)

- NBA2018_Rivers
- SWSA_all_v3_Nov2017
- Perennial Rivers
- Non-Perennial Rivers
- NBA2018_artificial_wetlands
- NBA2018_National Wetlands Map 5



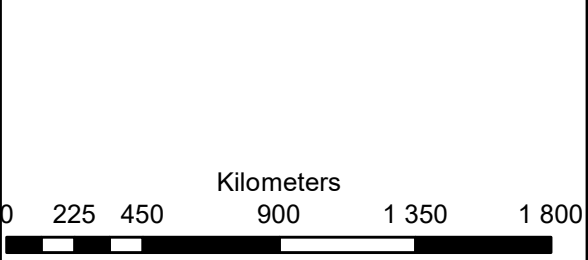
Doornhoek PV 1
Portion 18 of Farm Doornhoek 372
Klerksdorp

Legend

- Doornhoek PV 1
- Portion_18_of_372
- POWER LINE SINGLE
- SECONDARY ROAD
- OTHER ACCESS

Notes

- Map Scale is 1: 20 000 when printed on A3
- Aerial image courtesy of Google Earth Pro 2021
- Imagery date June 2021
- Biodiversity data courtesy of SANBI BGIS 2020



Map Drawn By:	Date	Reference
Melissa Mackay	2022/04/20	CML734

Cape Environmental Assessment Practitioners (Pty) Ltd
 Reg. No. 2008/004627/07

Telephone: +27 44 874 0365
 Facsimile: +27 44 874 0432
 Web: www.cape-eaprac.co.za

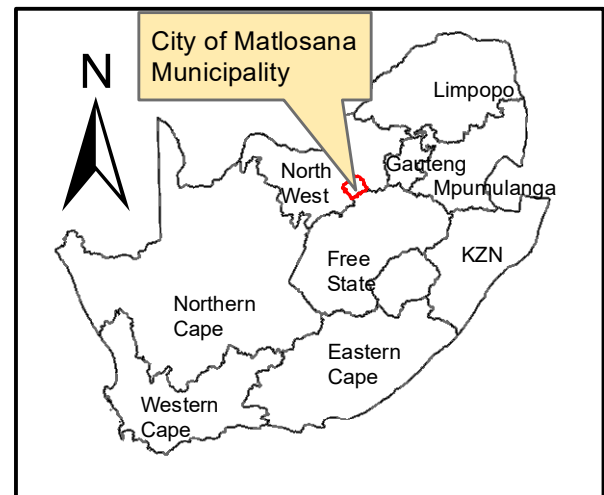
17 Progress St
 PO Box 2070
 George 6530

NATIONAL FRESHWATER ECOSYSTEM PRIORITY AREAS (NFEPA)

1Kilometers

Vegetation Type & Ecosystem Status

- Klerksdorp Thornveld, LC (2011), LC (2018)
- Vaal-Vet Sandy Grassland, EN (2011), EN (2018)



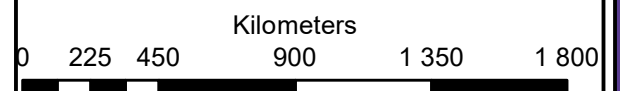
Doornhoek PV 1 Portion 18 of Farm Doornhoek 372 Klerksdorp

Legend

- Doornhoek PV 1
- Portion_18_of_372
- Perennial Rivers
- Non-Perennial Rivers
- SECONDARY ROAD
- OTHER ACCESS
- POWER LINE SINGLE

Notes

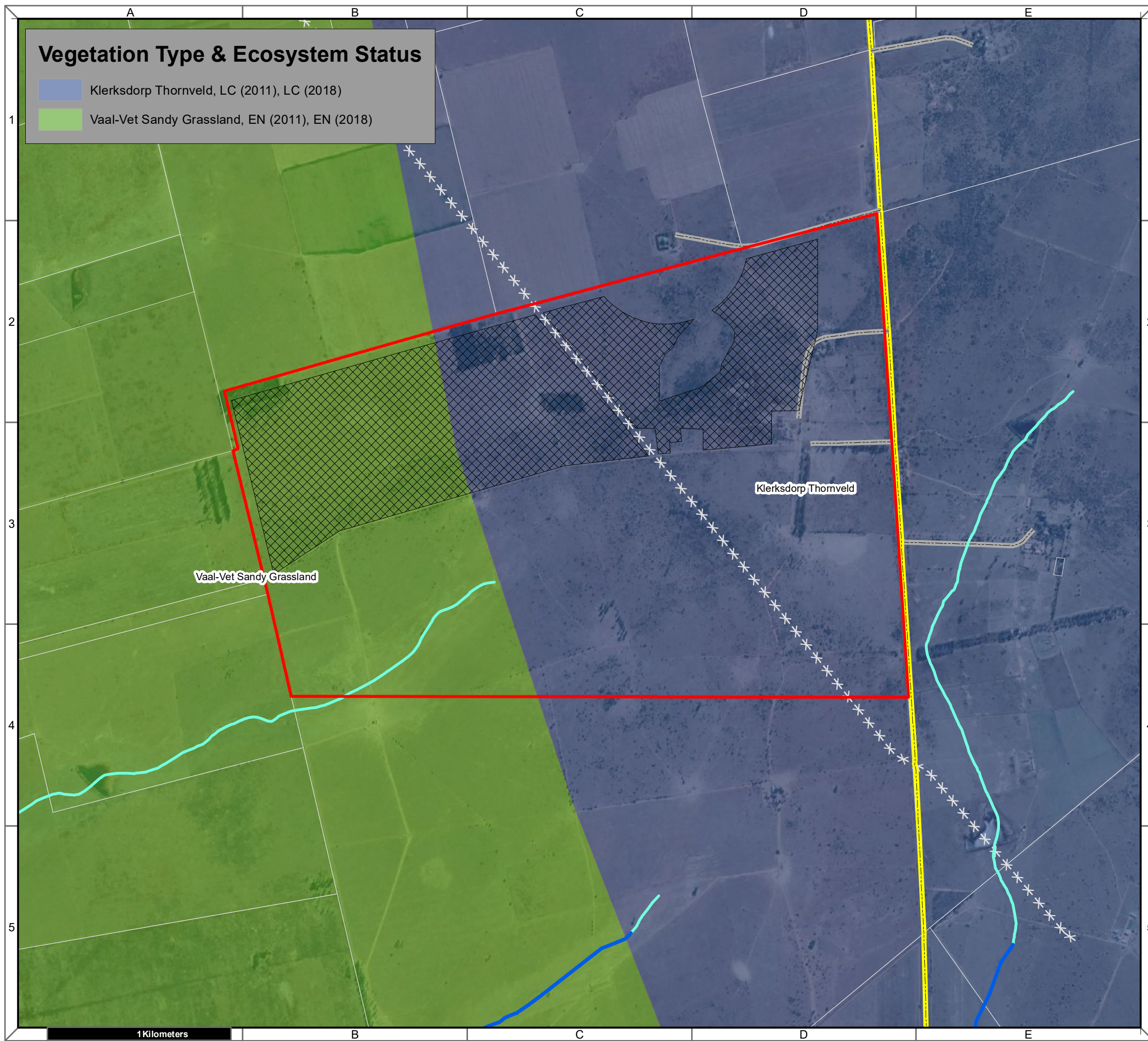
- Map Scale is 1: 20 000 when printed on A3
- Aerial image courtesy of Google Earth Pro 2021
- Imagery date June 2021
- Biodiversity data courtesy of SANBI BGIS 2020
- 2018 Threat Status Assessment (Skowno, A et al August 2019)
- LC (Least Concern), VU (Vulnerable), EN (Endangered), CR (Critically Endangered)



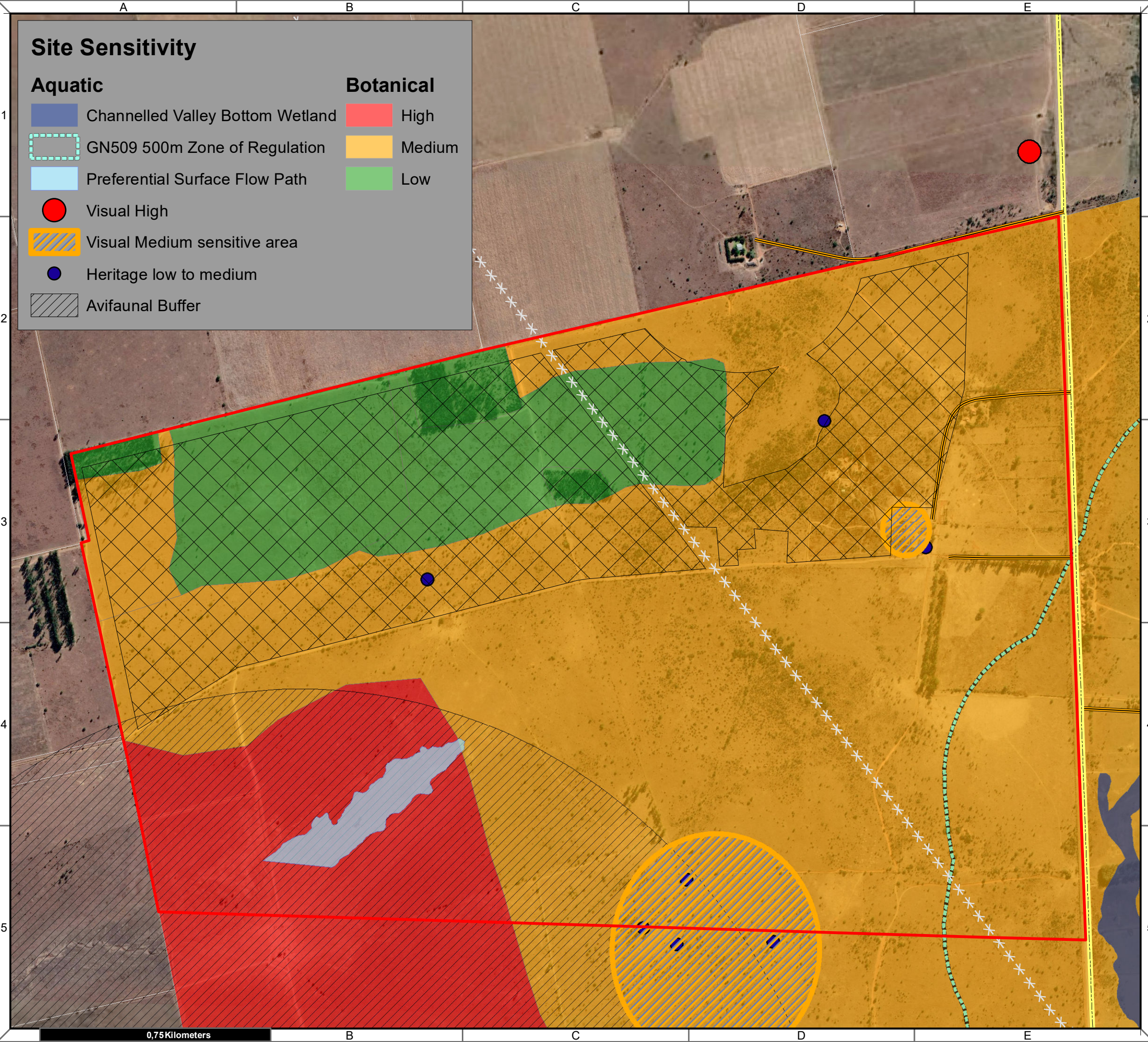
Map Drawn By:	Date	Reference
Melissa Mackay	2022/04/20	CML734

Cape Environmental Assessment Practitioners (Pty) Ltd
 Reg. No. 2008/004627/07
 Telephone: +27 44 874 0365
 Facsimile: +27 44 874 0432
 Web: www.cape-eaprac.co.za
 17 Progress St
 PO Box 2070
 George 6530

VEGETATION TYPE & ECOSYSTEM STATUS

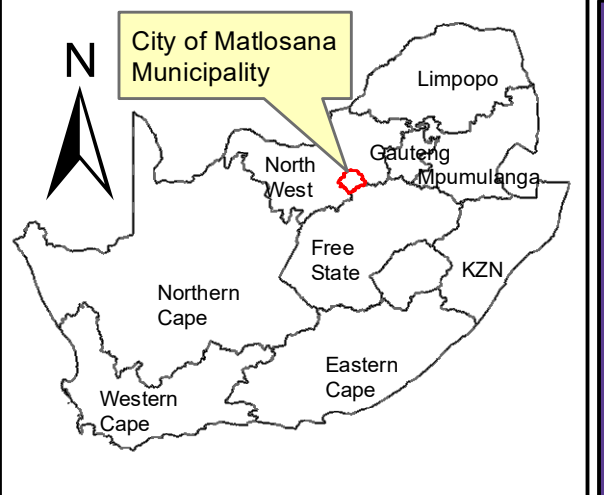


1 Kilometers



Site Sensitivity

Aquatic		Botanical	
	Channelled Valley Bottom Wetland		High
	GN509 500m Zone of Regulation		Medium
	Preferential Surface Flow Path		Low
	Visual High		
	Visual Medium sensitive area		
	Heritage low to medium		
	Avifaunal Buffer		



Doornhoek PV 1
Portion 18 of Farm Doornhoek 372
Klerksdorp

Legend

	Doornhoek PV 1
	Portion_18_of_372
	Perennial Rivers
	OTHER ACCESS
	SECONDARY ROAD
	POWER LINE SINGLE

Notes

- Map Scale is 1: 12 000 when printed on A3
- Aerial image courtesy of Google Earth Pro 2022
- Imagery date June 2021
- Sensitivity data provided by EIA specialists

Kilometers

Map Drawn By:	Date	Reference
Melissa Mackay	2022/05/05	CML734

Cape Environmental Assessment Practitioners (Pty) Ltd
 Reg. No. 2008/004627/07

Telephone: +27 44 874 0365
 Facsimile: +27 44 874 0432
 Web: www.cape-eaprac.co.za

17 Progress St
 PO Box 2070
 George 6530

SITE SENSITIVITIES