




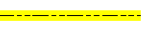



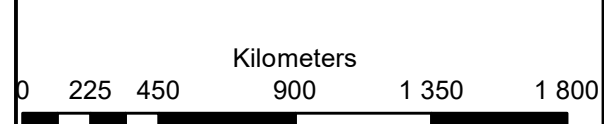
**Doornhoek PV 2**  
**Portion 18 of Farm Doornhoek 372**  
**Klerksdorp**

### Legend

-  Doornhoek PV 2
-  Portion\_18\_of\_372
-  Perennial Rivers
-  Non-Perennial Rivers
-  POWER LINE SINGLE
-  SECONDARY ROAD
-  OTHER ACCESS

### Notes

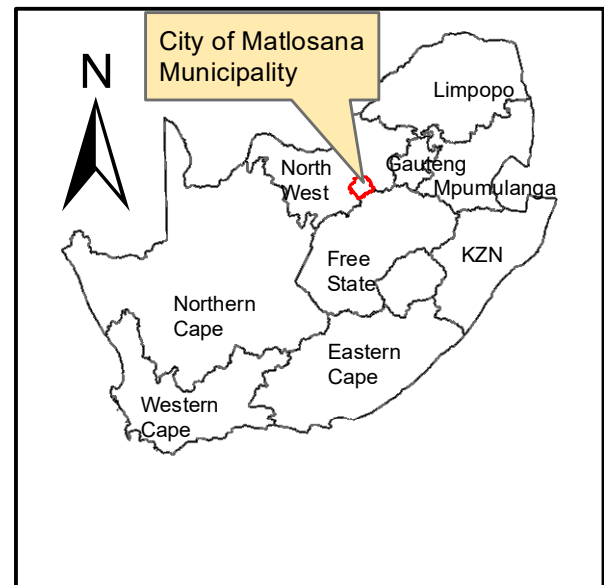
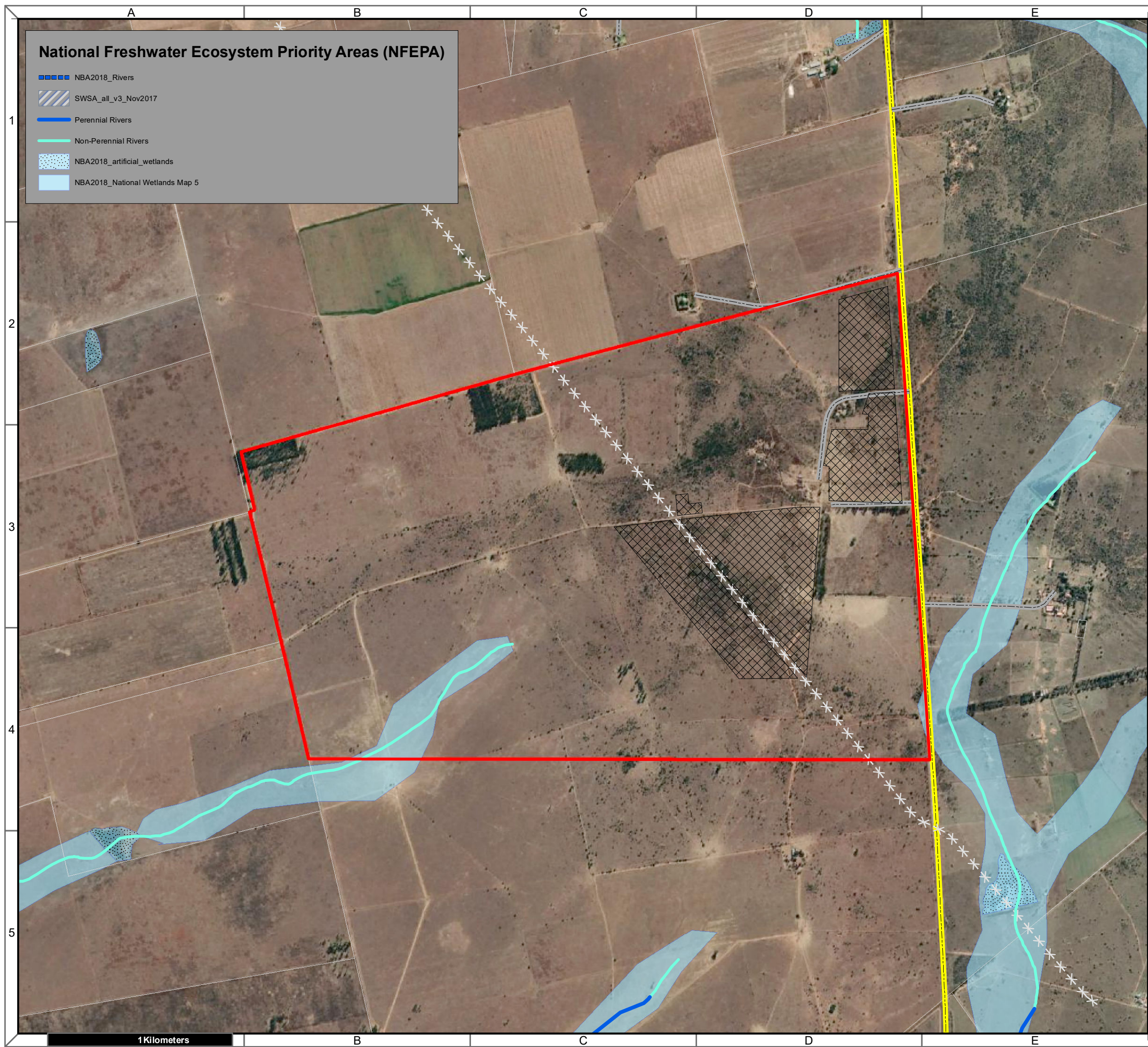
- Map Scale is 1: 20 000 when printed on A3
- Aerial image courtesy of Google Earth Pro 2021
- Imagery date Junel 2021
- Biodiversity data courtesy of SANBI BGIS 2020
- North West CBA 2015 dataset



Map Drawn By:	Date	Reference
Melissa Mackay	2022/04/20	CML734






**Cape Environmental Assessment Practitioners (Pty) Ltd**  
 Reg. No. 2008/004627/07  
 Telephone: +27 44 874 0365  
 Facsimile: +27 44 874 0432  
 Web: www.cape-eaprac.co.za  
 17 Progress St  
 PO Box 2070  
 George 6530

**CRITICAL BIODIVERSITY AREAS**



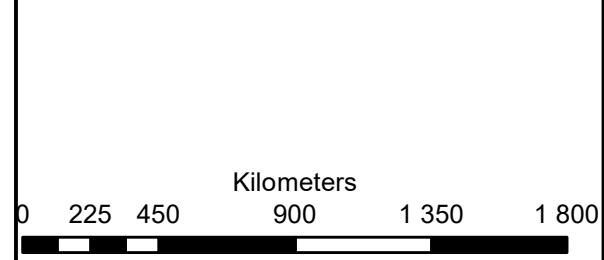
**Doornhoek PV 2**  
**Portion 18 of Farm Doornhoek 372**  
**Klerksdorp**

**Legend**

-  Doornhoek PV 2
-  Portion\_18\_of\_372
-  POWER LINE SINGLE
-  SECONDARY ROAD
-  OTHER ACCESS

**Notes**

- Map Scale is 1: 20 000 when printed on A3
- Aerial image courtesy of Google Earth Pro 2021
- Imagery date June 2021
- Biodiversity data courtesy of SANBI BGIS 2020



Map Drawn By:	Date	Reference
Melissa Mackay	2022/04/20	CML734

**Cape Environmental Assessment Practitioners (Pty) Ltd**  
 Reg. No. 2008/004627/07

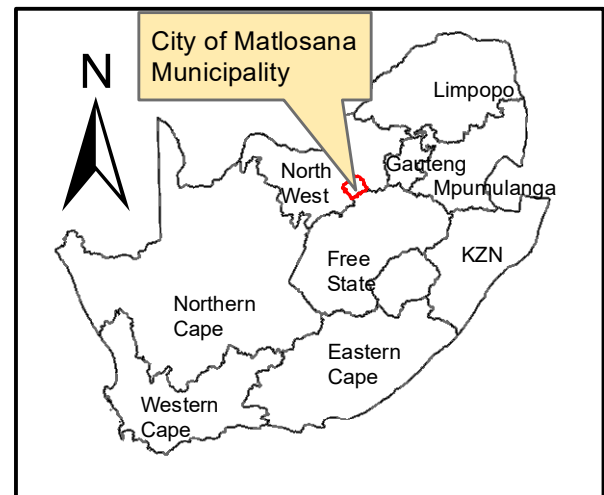
Telephone: +27 44 874 0365  
 Facsimile: +27 44 874 0432  
 Web: www.cape-eaprac.co.za

17 Progress St  
 PO Box 2070  
 George 6530

**NATIONAL FRESHWATER ECOSYSTEM PRIORITY AREAS (NFEPA)**

### Vegetation Type & Ecosystem Status

- Klerksdorp Thornveld, LC (2011), LC (2018)
- Vaal-Vet Sandy Grassland, EN (2011), EN (2018)



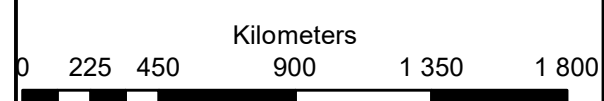
### Doornhoek PV 2 Portion 18 of Farm Doornhoek 372 Klerksdorp

#### Legend

- Doornhoek PV 2
- Portion\_18\_of\_372
- Perennial Rivers
- Non-Perennial Rivers
- POWER LINE SINGLE
- SECONDARY ROAD
- OTHER ACCESS

**Notes**

- Map Scale is 1: 20 000 when printed on A3
- Aerial image courtesy of Google Earth Pro 2021
- Imagery date June 2021
- Biodiversity data courtesy of SANBI BGIS 2020
- 2018 Threat Status Assessment (Skowno, A et al August 2019)
- LC (Least Concern), VU (Vulnerable), EN (Endangered), CR (Critically Endangered)



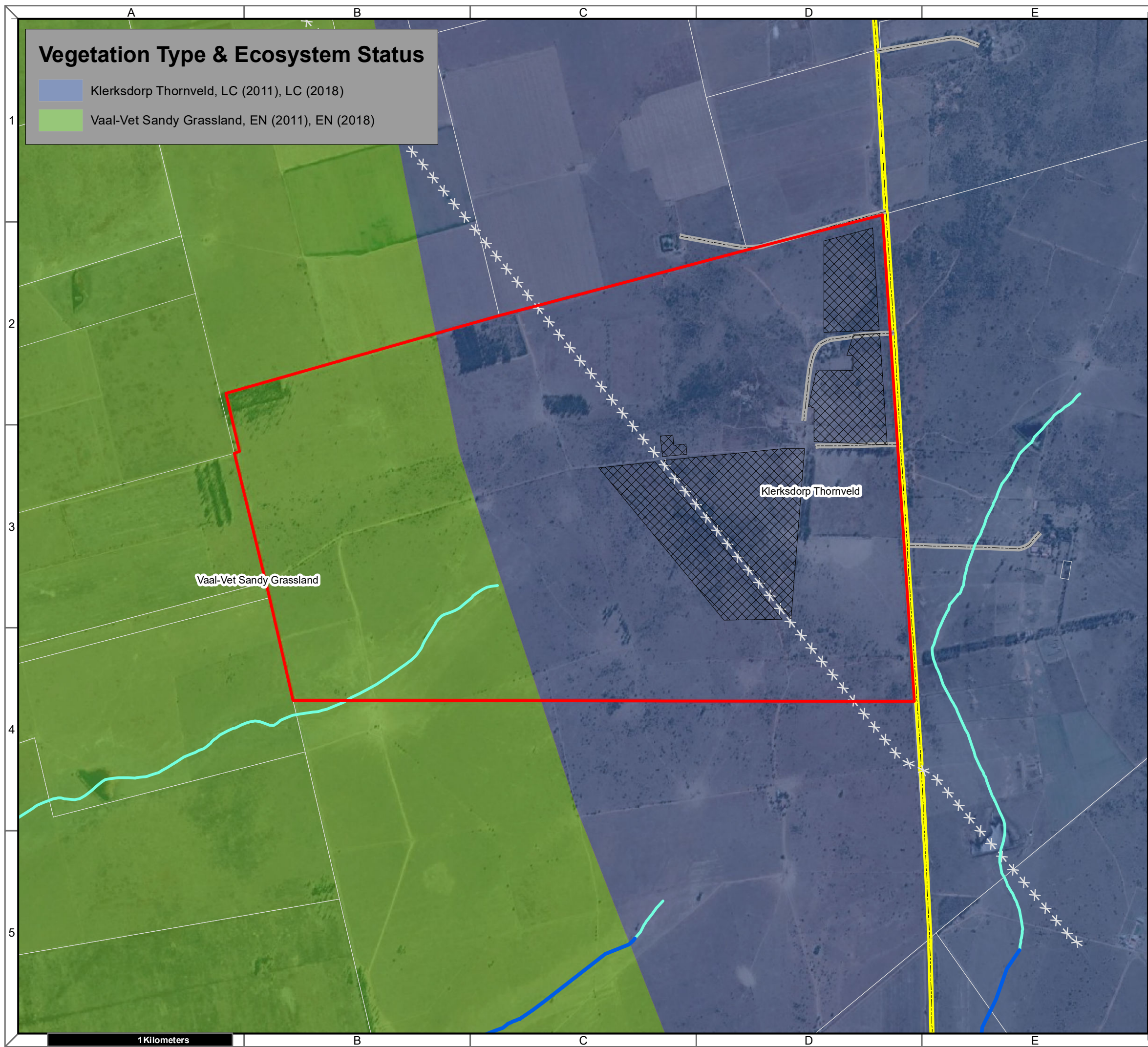
Map Drawn By:	Date	Reference
Melissa Mackay	2022/04/20	CML734

**Cape Environmental Assessment Practitioners (Pty) Ltd**  
 Reg. No. 2008/004627/07

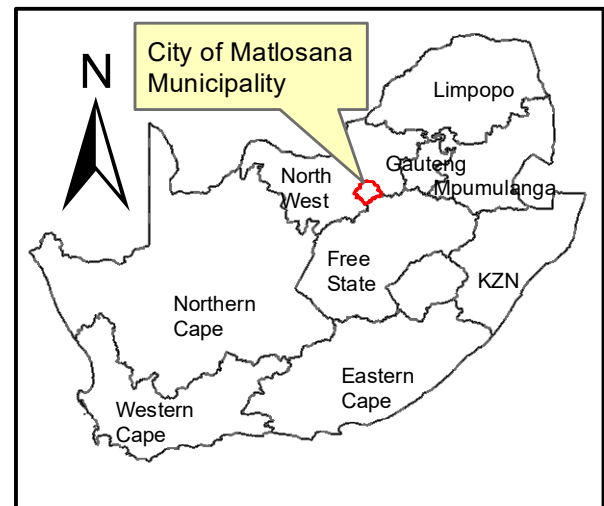
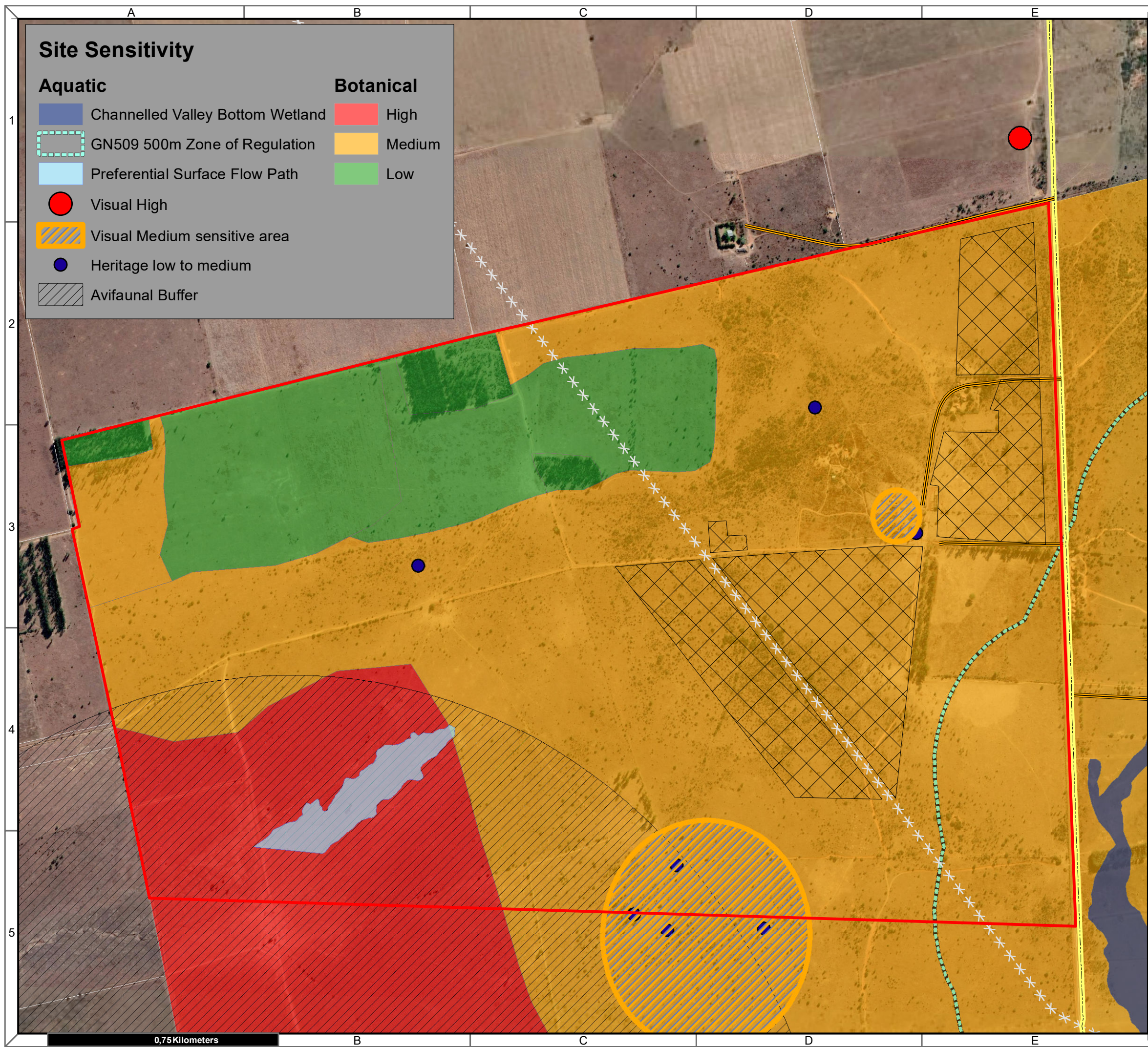
Telephone: +27 44 874 0365  
 Facsimile: +27 44 874 0432  
 Web: www.cape-eaprac.co.za

17 Progress St  
 PO Box 2070  
 George 6530

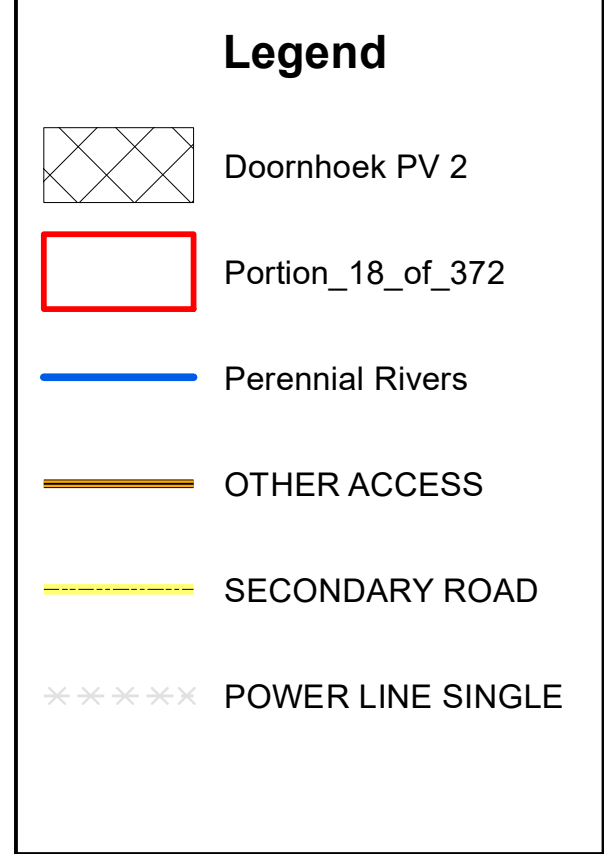
**VEGETATION TYPE & ECOSYSTEM STATUS**



1 Kilometers



**Doornhoek PV 2**  
**Portion 18 of Farm Doornhoek 372**  
**Klerksdorp**



**Notes**

- Map Scale is 1: 12 000 when printed on A3
- Aerial image courtesy of Google Earth Pro 2022
- Imagery date June 2021
- Sensitivity data provided by EIA specialists

Kilometers

0 0,1 0,2 0,4 0,6 0,8

Map Drawn By:	Date	Reference
Melissa Mackay	2022/05/05	CML734

**Cape Environmental Assessment Practitioners (Pty) Ltd**  
 Reg. No. 2008/004627/07

Telephone: +27 44 874 0365  
 Facsimile: +27 44 874 0432  
 Web: www.cape-eaprac.co.za

17 Progress St  
 PO Box 2070  
 George 6530

**SITE SENSITIVITY**