

**Roan PV 1
Farm 337
Hartbeesfontein**

Legend

- Roan PV Site
- Roan 1 Access Road
- Roan 1 PV
- Perennial Rivers
- Non-Perennial Rivers
- SECONDARY ROAD
- OTHER ACCESS

Notes

- Map Scale is 1: 25 000 when printed on A3
- Aerial image courtesy of Google Earth Pro 2021
- Imagery date April 2021
- Biodiversity data courtesy of SANBI BGIS 2020
- North West CBA 2015 dataset

Kilometers

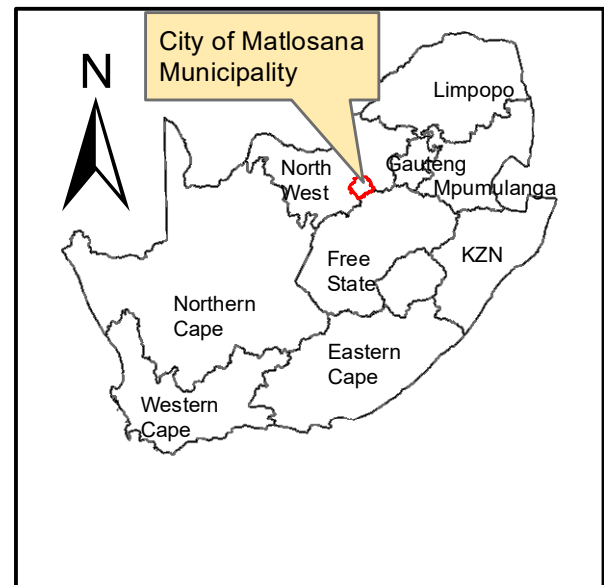
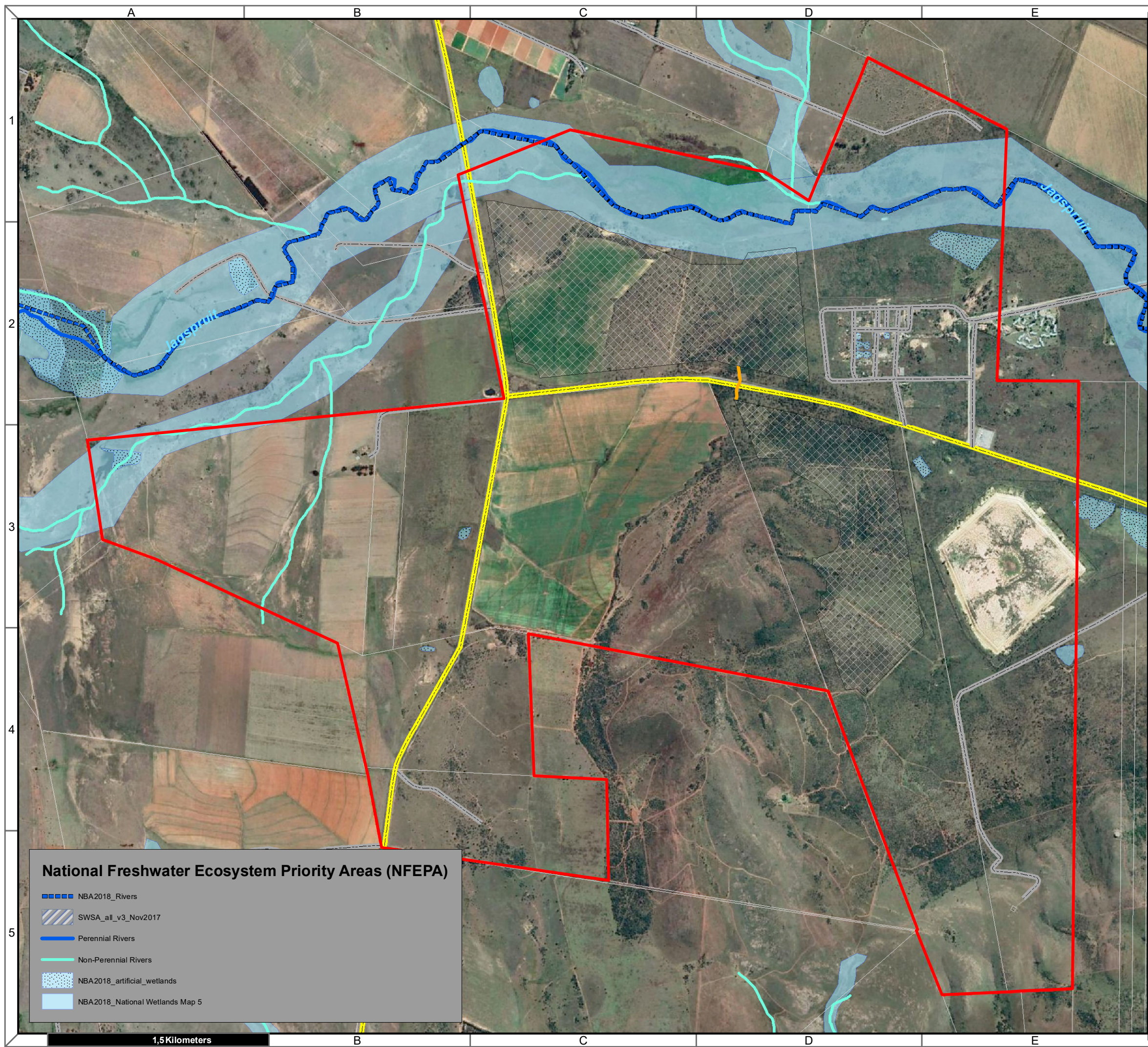
0 225 450 900 1 350 1 800

Map Drawn By:	Date	Reference
Melissa Mackay	2022/04/14	CML715

Critical Biodiversity Areas (CBA)

Aquatic CBA	Terrestrial CBA
CBA1	CBA1
CBA2	CBA2
ESA1	ESA1
ESA2	ESA2

CRITICAL BIODIVERSITY AREAS



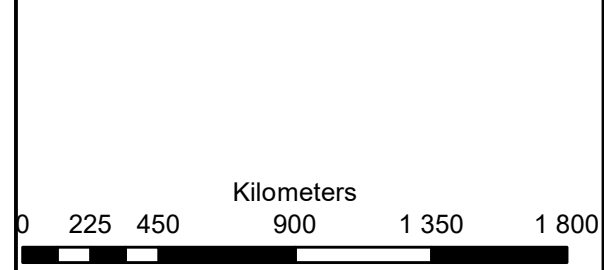
**Roan PV 1
Farm 337
Hartbeesfontein**

Legend

- Roan PV Site
- Roan 1 Access Road
- Roan 1 PV
- SECONDARY ROAD
- OTHER ACCESS

Notes

- Map Scale is 1: 25 000 when printed on A3
- Aerial image courtesy of Google Earth Pro 2021
- Imagery date April 2021
- Biodiversity data courtesy of SANBI BGIS 2020



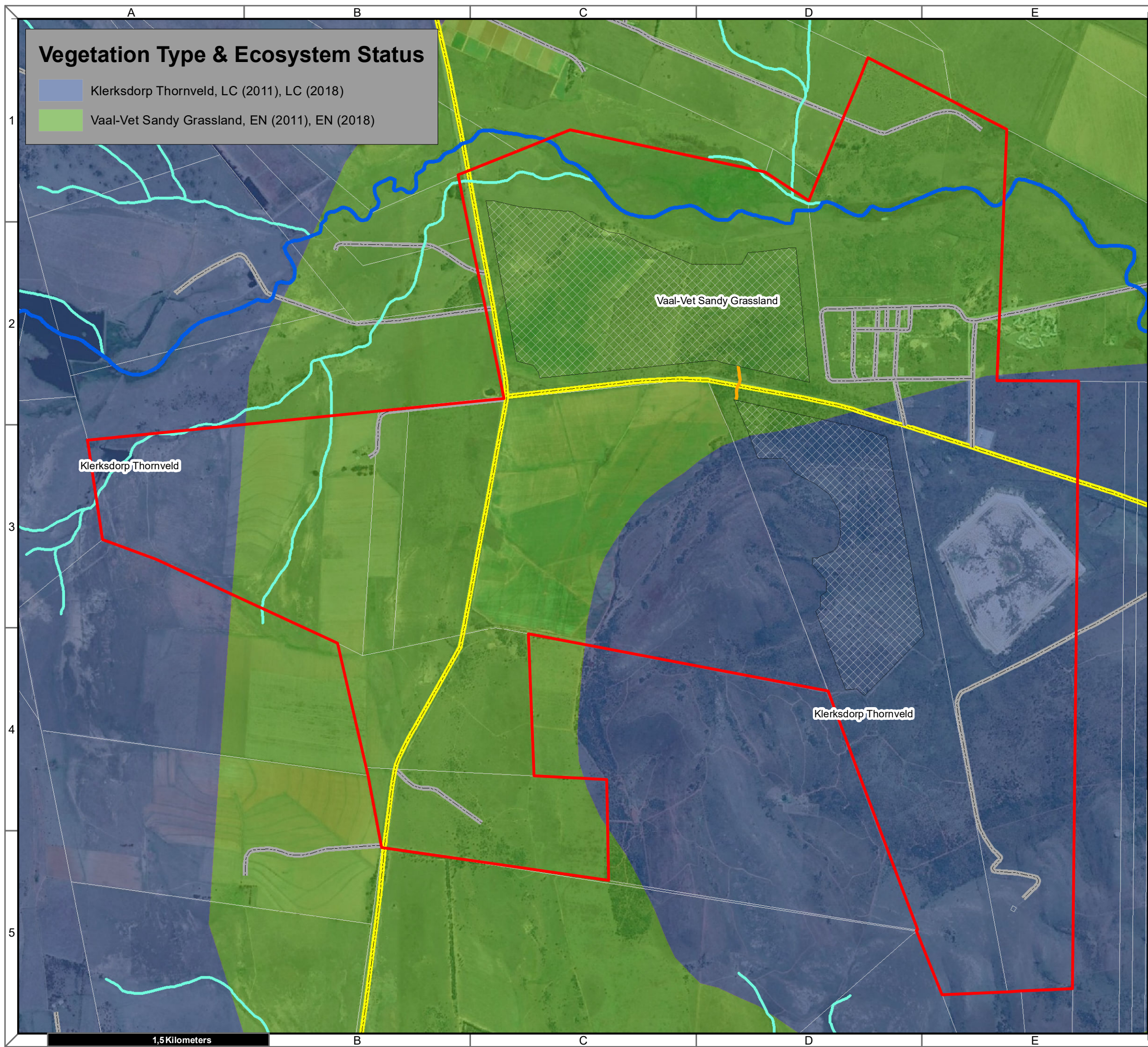
Map Drawn By:	Date	Reference
Melissa Mackay	2022/04/14	CML715

National Freshwater Ecosystem Priority Areas (NFEPA)

- NBA2018_Rivers
- SWSA_all_v3_Nov2017
- Perennial Rivers
- Non-Perennial Rivers
- NBA2018_artificial_wetlands
- NBA2018_National Wetlands Map 5

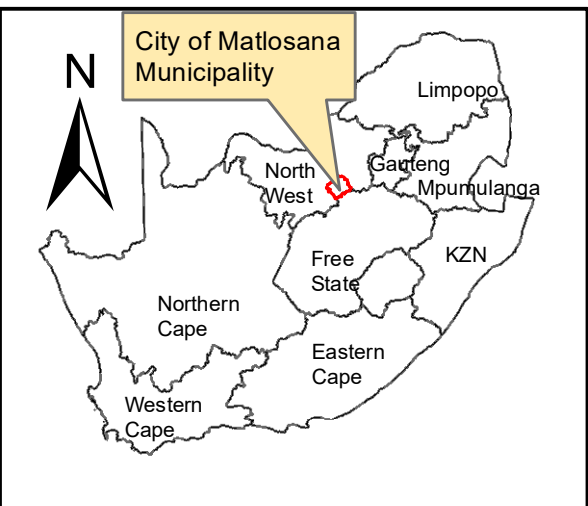
Cape Environmental Assessment Practitioners (Pty) Ltd
 Reg. No. 2008/004627/07
 Telephone: +27 44 874 0365
 Facsimile: +27 44 874 0432
 Web: www.cape-eaprac.co.za
 17 Progress St
 PO Box 2070
 George 6530

NATIONAL FRESHWATER ECOSYSTEM PRIORITY AREAS (NFEPA)



Vegetation Type & Ecosystem Status

- Klerksdorp Thornveld, LC (2011), LC (2018)
- Vaal-Vet Sandy Grassland, EN (2011), EN (2018)



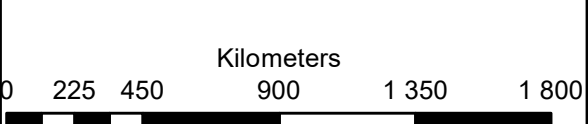
**Roan PV 1
Farm 337
Hartbeesfontein**

Legend

- Roan PV Site
- Roan 1 Access Road
- Roan 1 PV
- Perennial Rivers
- Non-Perennial Rivers
- SECONDARY ROAD
- OTHER ACCESS

Notes

- Map Scale is 1: 25 000 when printed on A3
- Aerial image courtesy of Google Earth Pro 2021
- Imagery date April 2021
- Biodiversity data courtesy of SANBI BGIS 2020
- 2018 Threat Status Assessment (Skowno, A et al August 2019)
- LC (Least Concern), VU (Vulnerable), EN (Endangered), CR (Critically Endangered)



Map Drawn By:	Date	Reference
Melissa Mackay	2022/04/14	CML715

Cape Environmental Assessment Practitioners (Pty) Ltd
 Reg. No. 2008/004627/07
 Telephone: +27 44 874 0365
 Facsimile: +27 44 874 0432
 Web: www.cape-eaprac.co.za
 17 Progress St
 PO Box 2070
 George 6530

VEGETATION TYPE & ECOSYSTEM STATUS