

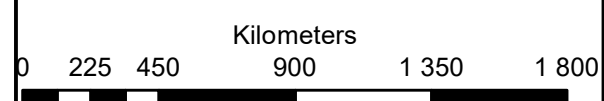
Roan PV 2
Portions 4, 5, 9 & 16 of Farm 299
Hartbeesfontein

Legend

- Roan PV Site
- Roan PV 2 Access
- Roan PV 2
- Perennial Rivers
- Non-Perennial Rivers
- SECONDARY ROAD
- OTHER ACCESS

Notes

- Map Scale is 1: 25 000 when printed on A3
- Aerial image courtesy of Google Earth Pro 2021
- Imagery date April 2021
- Biodiversity data courtesy of SANBI BGIS 2020
- North West CBA 2015 dataset



Map Drawn By:	Date	Reference
Melissa Mackay	2022/04/14	CML715

Cape Environmental Assessment Practitioners (Pty) Ltd
 Reg. No. 2008/004627/07

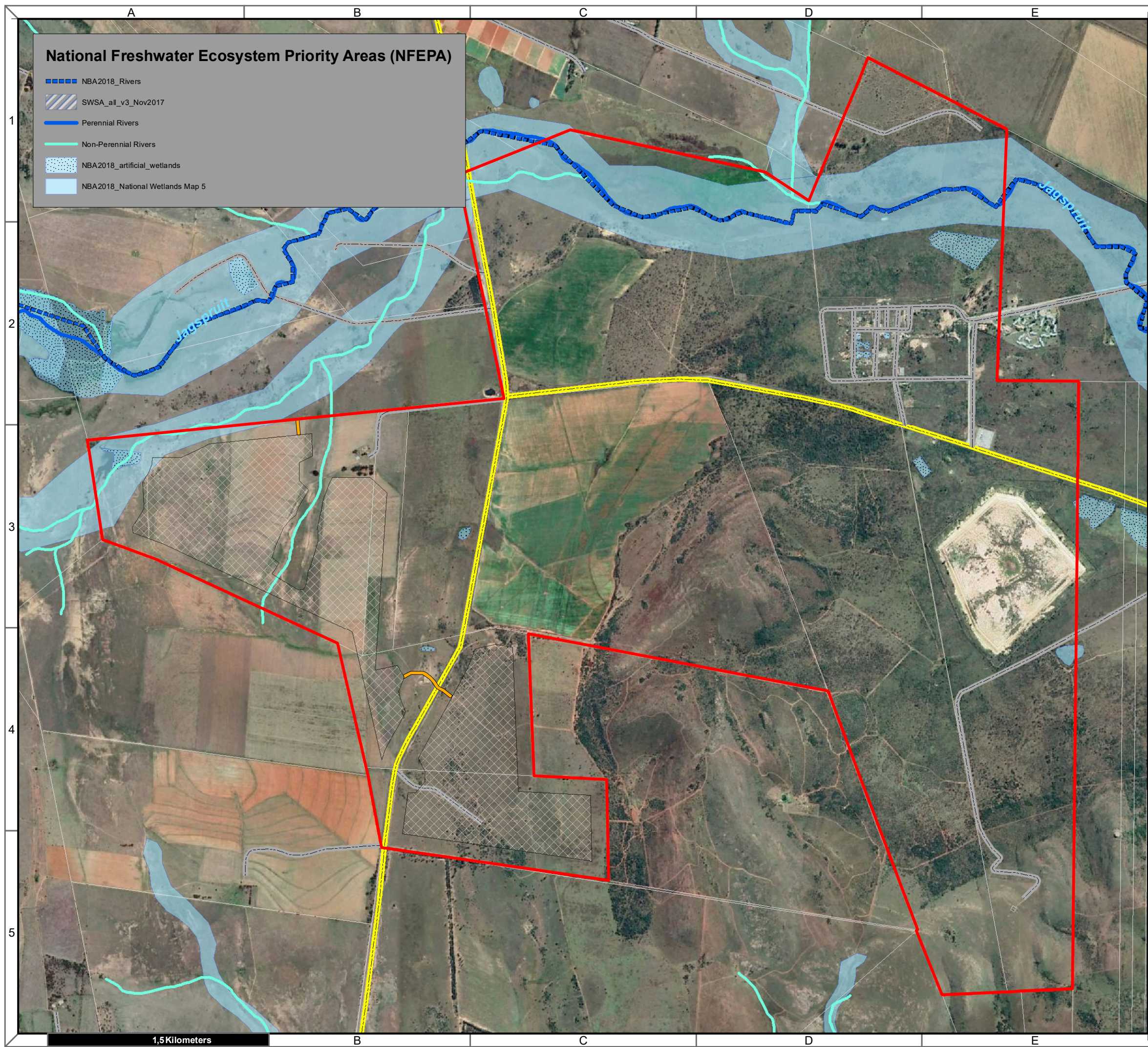
Telephone: +27 44 874 0365
 Facsimile: +27 44 874 0432
 Web: www.cape-eaprac.co.za

17 Progress St
 PO Box 2070
 George 6530

CRITICAL BIODIVERSITY AREAS

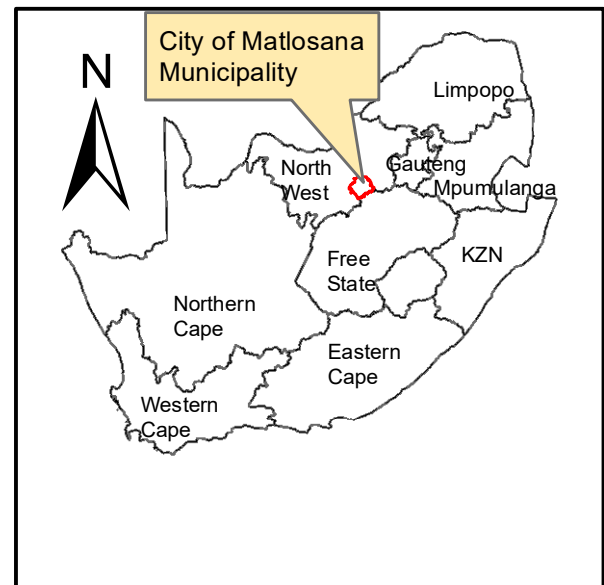
Critical Biodiversity Areas (CBA)

Aquatic CBA	Terrestrial CBA
CBA1	CBA1
CBA2	CBA2
ESA1	ESA1
ESA2	ESA2



National Freshwater Ecosystem Priority Areas (NFEPA)

- NBA2018_Rivers
- SWSA_all_v3_Nov2017
- Perennial Rivers
- Non-Perennial Rivers
- NBA2018_artificial_wetlands
- NBA2018_National Wetlands Map 5



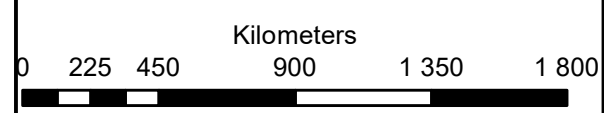
Roan PV 2
Portions 4, 5, 9 & 16 of Farm 299
Hartbeesfontein

Legend

- Roan PV Site
- Roan PV 2 Access
- Roan PV 2
- SECONDARY ROAD
- OTHER ACCESS

Notes

- Map Scale is 1: 25 000 when printed on A3
- Aerial image courtesy of Google Earth Pro 2021
- Imagery date April 2021
- Biodiversity data courtesy of SANBI BGIS 2020



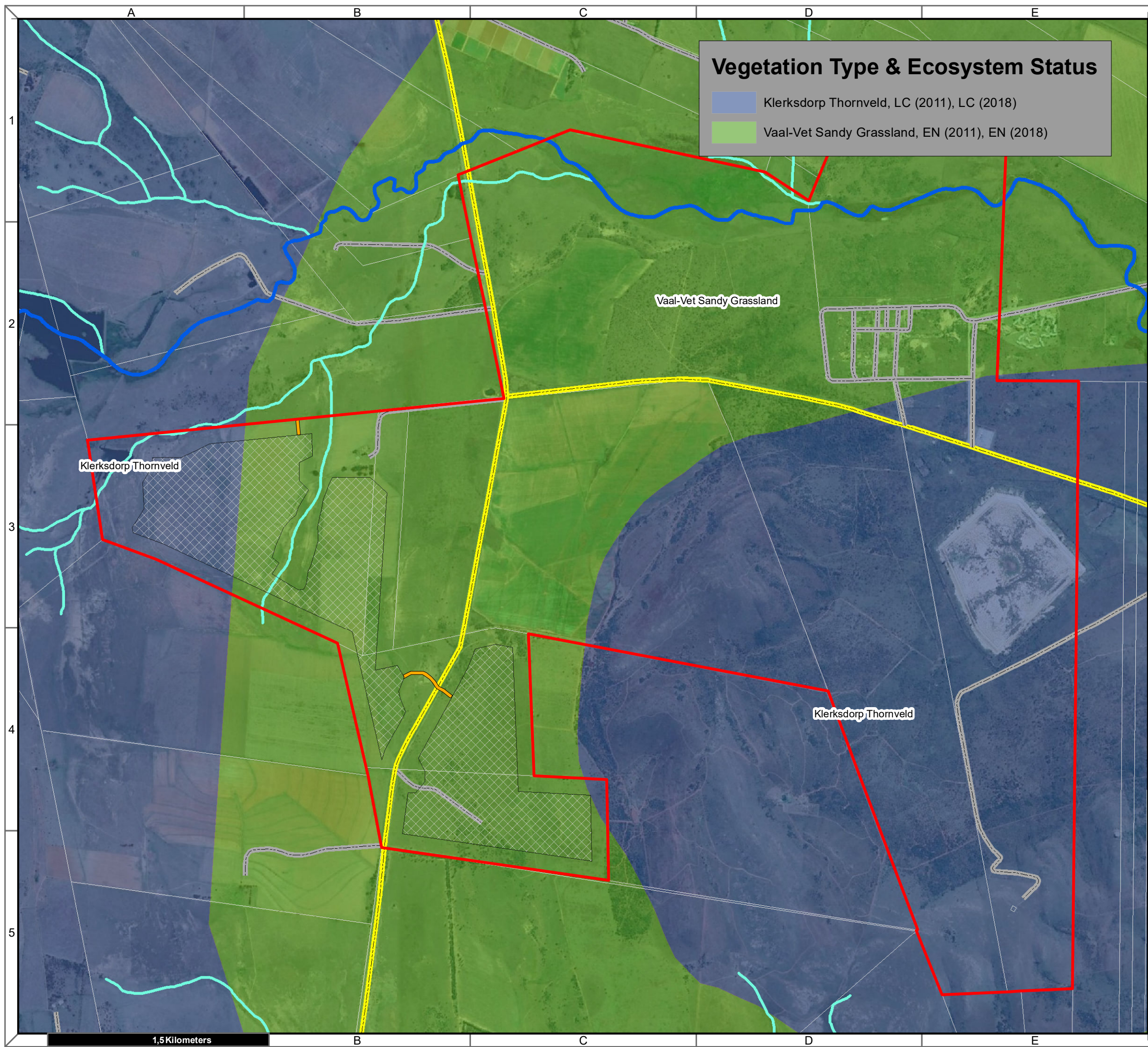
Map Drawn By:	Date	Reference
Melissa Mackay	2022/04/14	CML715

Cape Environmental Assessment Practitioners (Pty) Ltd
 Reg. No. 2008/004627/07

Telephone: +27 44 874 0365
 Facsimile: +27 44 874 0432
 Web: www.cape-eaprac.co.za

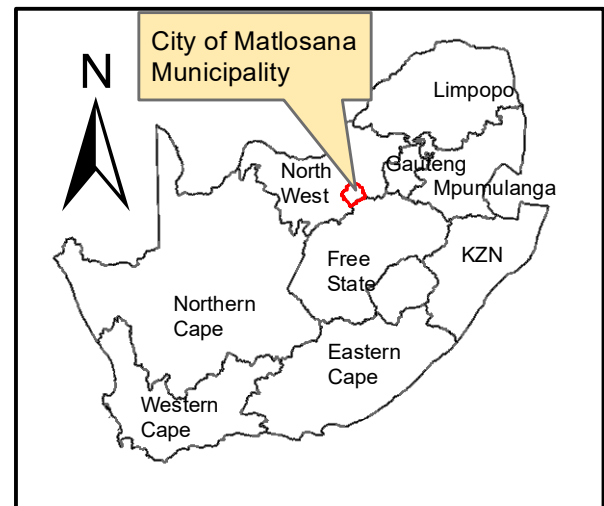
17 Progress St
 PO Box 2070
 George 6530

NATIONAL FRESHWATER ECOSYSTEM PRIORITY AREAS (NFEPA)



Vegetation Type & Ecosystem Status

- Klerksdorp Thornveld, LC (2011), LC (2018)
- Vaal-Vet Sandy Grassland, EN (2011), EN (2018)



Roan PV 2
Portions 4, 5, 9 & 16 of Farm 299
Hartbeesfontein

Legend

- Roan PV Site
- Roan PV 2 Access
- Roan PV 2
- Perennial Rivers
- Non-Perennial Rivers
- SECONDARY ROAD
- OTHER ACCESS

Notes

- Map Scale is 1: 25 000 when printed on A3
- Aerial image courtesy of Google Earth Pro 2021
- Imagery date April 2021
- Biodiversity data courtesy of SANBI BGIS 2020
- 2018 Threat Status Assessment (Skowno, A et al August 2019)
- LC (Least Concern), VU (Vulnerable), EN (Endangered), CR (Critically Endangered)

Kilometers

0 225 450 900 1 350 1 800

Map Drawn By:	Date	Reference
Melissa Mackay	2022/04/14	CML715

Cape Environmental Assessment Practitioners (Pty) Ltd
 Reg. No. 2008/004627/07

Telephone: +27 44 874 0365
 Facsimile: +27 44 874 0432
 Web: www.cape-eaprac.co.za

17 Progress St
 PO Box 2070
 George 6530

VEGETATION TYPE & ECOSYSTEM STATUS