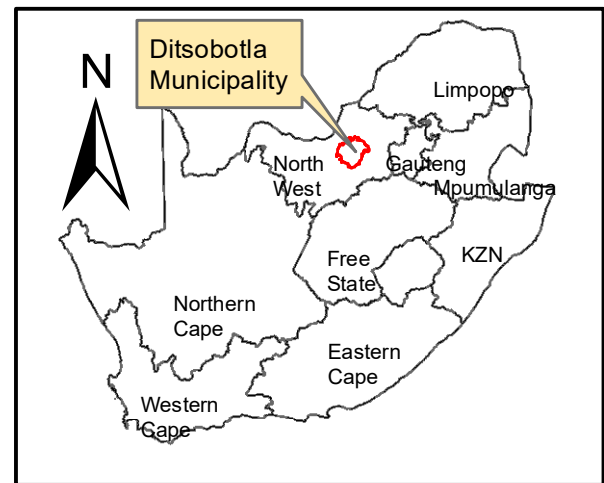


### Critical Biodiversity Areas (CBA)

Aquatic CBA		Terrestrial CBA	
	CBA1		CBA1
	CBA2		CBA2
	ESA1		ESA1
	ESA2		ESA2



**Themeda PV  
Portions 7 of Farm 34  
Elandsfontein**

### Legend

- Portion\_7\_of\_34
- MAIN ROAD
- OTHER ACCESS
- Perennial Rivers
- Non-Perennial Rivers

### Notes

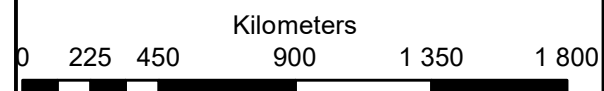
- Map Scale is 1: 20 000 when printed on A3
- Aerial image courtesy of Google Earth Pro 2021
- Imagery date September 2021
- Biodiversity data courtesy of SANBI BGIS 2020
- North West CBA 2015 dataset

Map Drawn By:	Date	Reference
Melissa Mackay	2022/08/13	DIT725

**Cape Environmental Assessment Practitioners (Pty) Ltd**  
 Telephone: +27 44 874 0365  
 Facsimile: +27 44 874 0432  
 Web: www.cape-eaprac.co.za  
 17 Progress St  
 PO Box 2070  
 George 6530

**CRITICAL BIODIVERSITY AREAS**

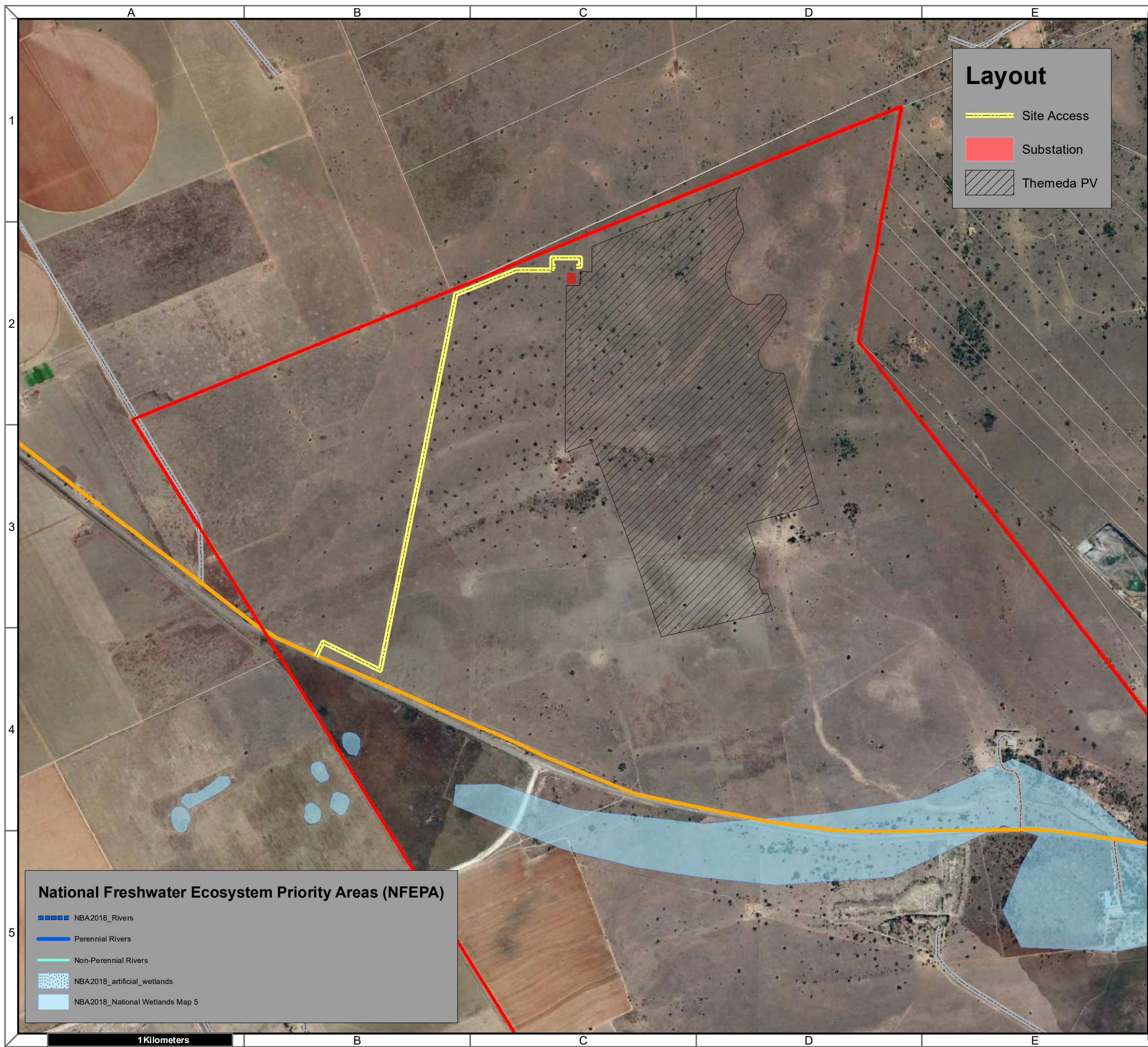
1Kilometers



### Layout

- Site Access
- Substation
- Themeda PV



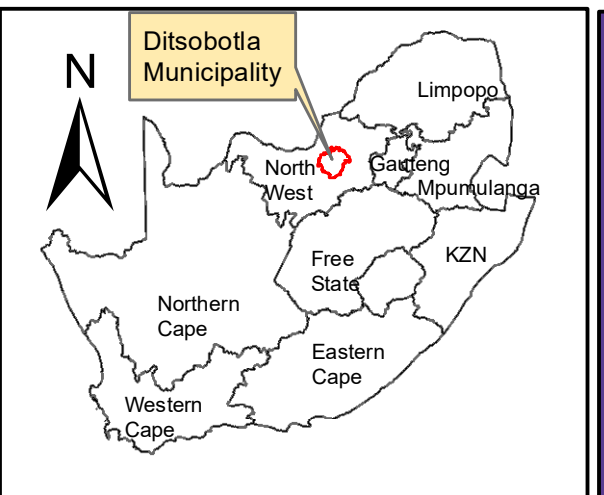


**Layout**

- Site Access
- Substation
- Themeda PV

**National Freshwater Ecosystem Priority Areas (NFEPA)**

- NBA2018\_Rivers
- Perennial Rivers
- Non-Perennial Rivers
- NBA2018\_artificial\_wetlands
- NBA2018\_National Wetlands Map 5



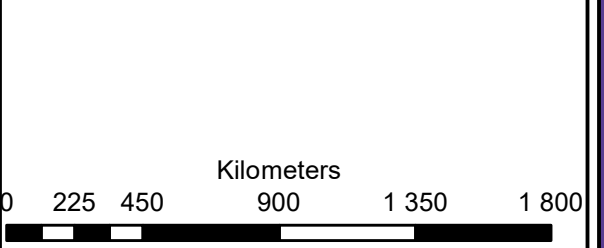
**Themeda PV  
Portions 7 of Farm 34  
Elandsfontein**

**Legend**

- Portion\_7\_of\_34
- MAIN ROAD
- OTHER ACCESS
- Perennial Rivers
- Non-Perennial Rivers

**Notes**

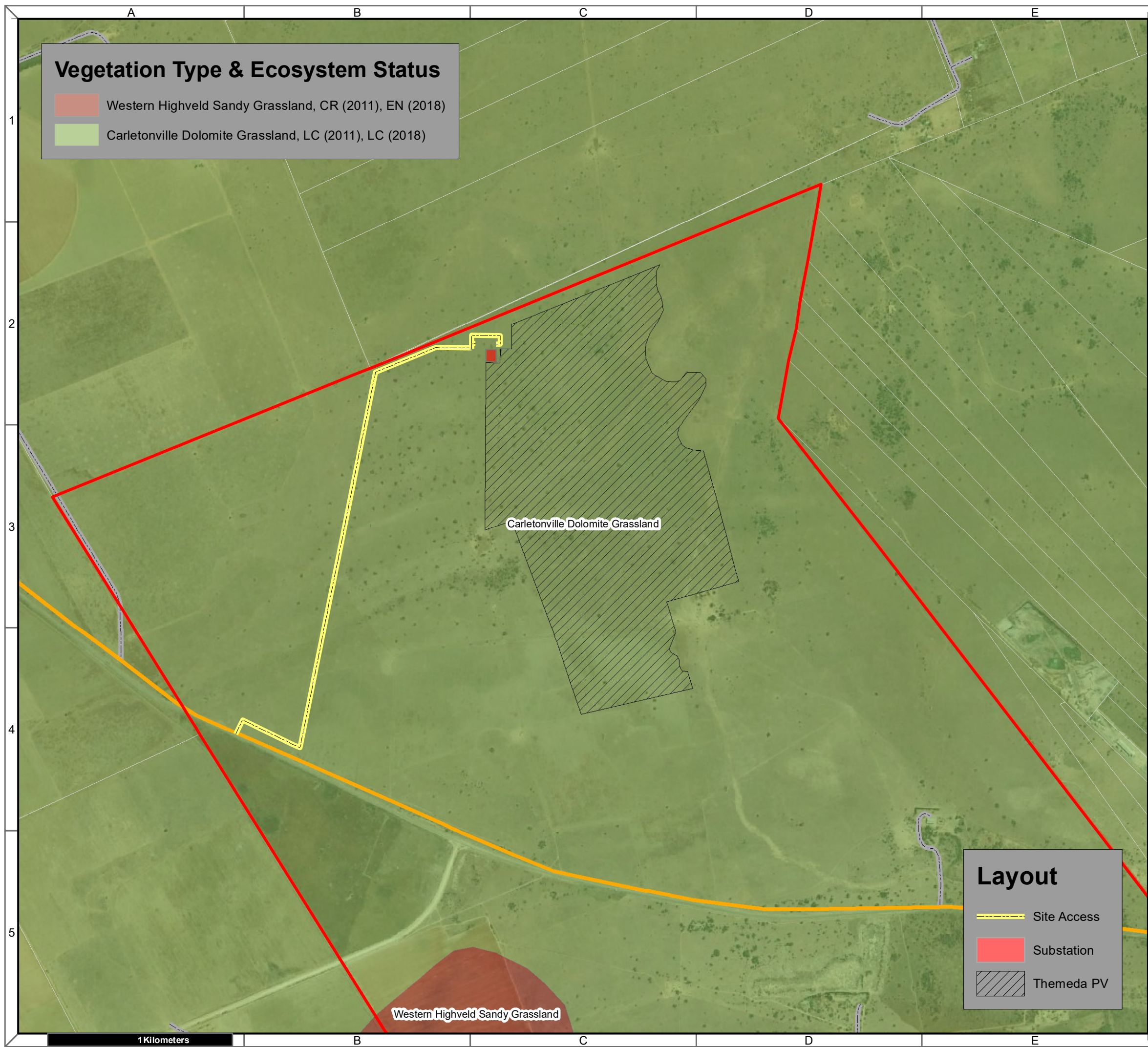
- Map Scale is 1: 20 000 when printed on A3
- Aerial image courtesy of Google Earth Pro 2022
- Imagery date September 2021
- Biodiversity data courtesy of SANBI BGIS 2020



Map Drawn By:	Date	Reference
Melissa Mackay	2022/08/13	DIT725

**Cape Environmental Assessment Practitioners (Pty) Ltd**  
 Telephone: +27 44 874 0365  
 Facsimile: +27 44 874 0432  
 Web: www.cape-eaprac.co.za  
 17 Progress St  
 PO Box 2070  
 George 6530



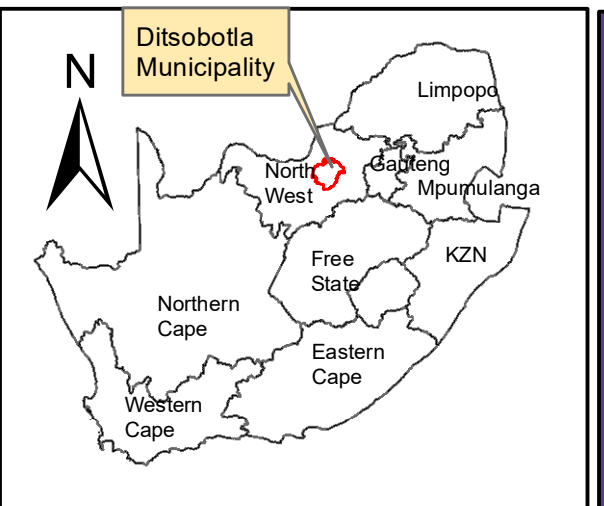


### Vegetation Type & Ecosystem Status

- Western Highveld Sandy Grassland, CR (2011), EN (2018)
- Carletonville Dolomite Grassland, LC (2011), LC (2018)

### Layout

- Site Access
- Substation
- Themeda PV



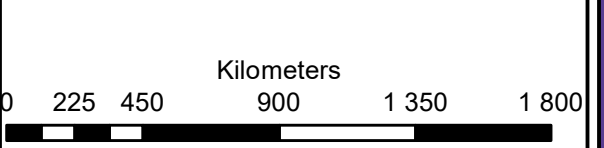
**Themeda PV  
Portions 7 of Farm 34  
Elandsfontein**

### Legend

- Portion\_7\_of\_34
- Perennial Rivers
- Non-Perennial Rivers
- MAIN ROAD
- OTHER ACCESS

### Notes

- Map Scale is 1: 20 000 when printed on A3
- Aerial image courtesy of Google Earth Pro 2021
- Imagery date Septebmer 2021
- Biodiversity data courtesy of SANBI BGIS 2020
- 2018 Threat Status Assessment (Skowno, A et al August 2019)
- LC (Least Concern), VU (Vulnerable), EN (Endangered), CR (Critically Endangered)



Map Drawn By:	Date	Reference
Melissa Mackay	2022/08/13	DIT725

**Cape Environmental Assessment Practitioners (Pty) Ltd**  
 Reg. No. 2008/004627/07  
 Telephone: +27 44 874 0365  
 Facsimile: +27 44 874 0432  
 Web: www.cape-eaprac.co.za  
 17 Progress St  
 PO Box 2070  
 George 6530

**VEGETATION TYPE & ECOSYSTEM STATUS**