

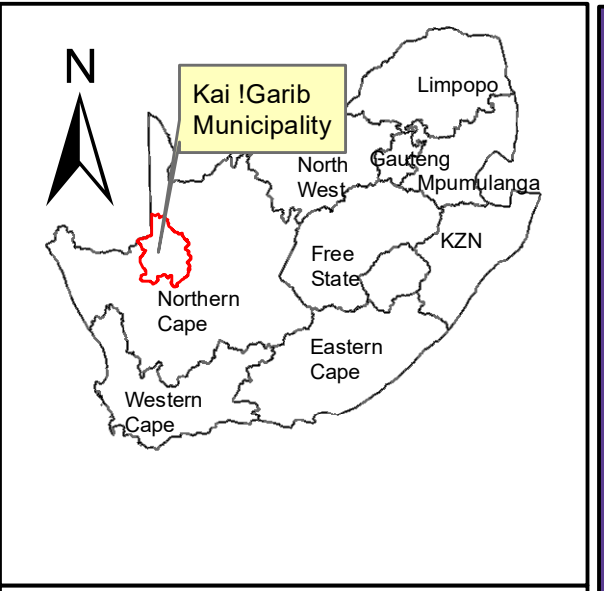
DK 5 Layout

	SS Alt 1 (preferred)		Alt 1.2 Grid
	Access Roads		Alt 1.2 Corridor
	Alt 1.1 Grid		Alt 1.3 Grid
	Alt 1.1 Corridor		Alt 1.3 Corridor

Vegetation Types & Ecosystem Status

SANBI Veg 2018

- Bushmanland Arid Grassland, Least Threatened
- Gordonia Duneveld, Least Threatened
- Kalahari Karroid Shrubland, Least Threatened
- Lower Gariep Alluvial Vegetation, Endangered
- Lower Gariep Broken Veld, Least Threatened



Dyasonsklip 5 Solar PV Farm 454 Dyasonsklip Upington

Legend

- Farm_454
- Access Roads
- Grid_Corridor_Properties

Notes

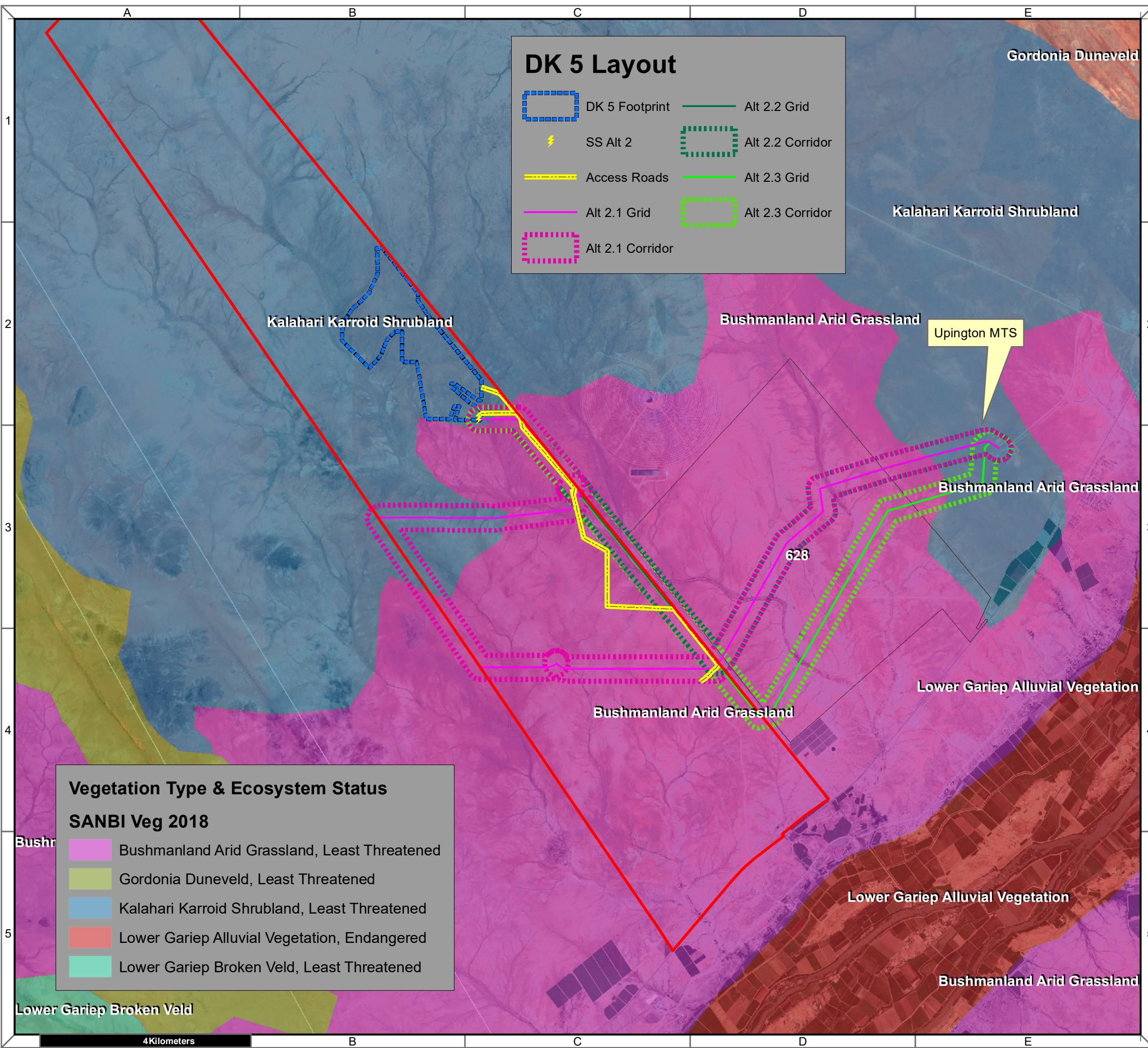
- Map Scale is 1: 70 000 when printed on A3
- Imagery date 2019
- Biodiversity data courtesy of SANBI BGIS 2019

Kilometers
0 0,5 1 2 3 4

Map Drawn By:	Date	Reference
Melissa Mackay	2020/05/25	KAI633

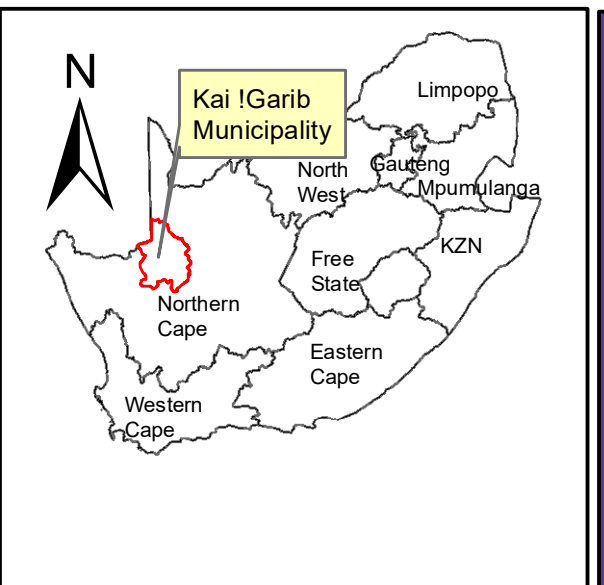
Cape Environmental Assessment Practitioners (Pty) Ltd
 Reg. No. 2008/004627/07
 Telephone: +27 44 874 0365
 Facsimile: +27 44 874 0432
 Web: www.cape-eaprac.co.za
 17 Progress St
 PO Box 2070
 George 6530

VEGETATION TYPE & ECOSYSTEM STATUS WITH ALT 1 GRID CONNECTIONS



DK 5 Layout

	DK 5 Footprint		Alt 2.2 Grid
	SS Alt 2		Alt 2.2 Corridor
	Access Roads		Alt 2.3 Grid
	Alt 2.1 Grid		Alt 2.3 Corridor
	Alt 2.1 Corridor		



Dyasonsklip 5 Solar PV Farm 454 Dyasonsklip Upington

Legend

- Farm_454
- Access Roads
- Grid_Corridor_Properties

Vegetation Type & Ecosystem Status

SANBI Veg 2018

	Bushmanland Arid Grassland, Least Threatened
	Gordonia Duneveld, Least Threatened
	Kalahari Karroid Shrubland, Least Threatened
	Lower Gariep Alluvial Vegetation, Endangered
	Lower Gariep Broken Veld, Least Threatened

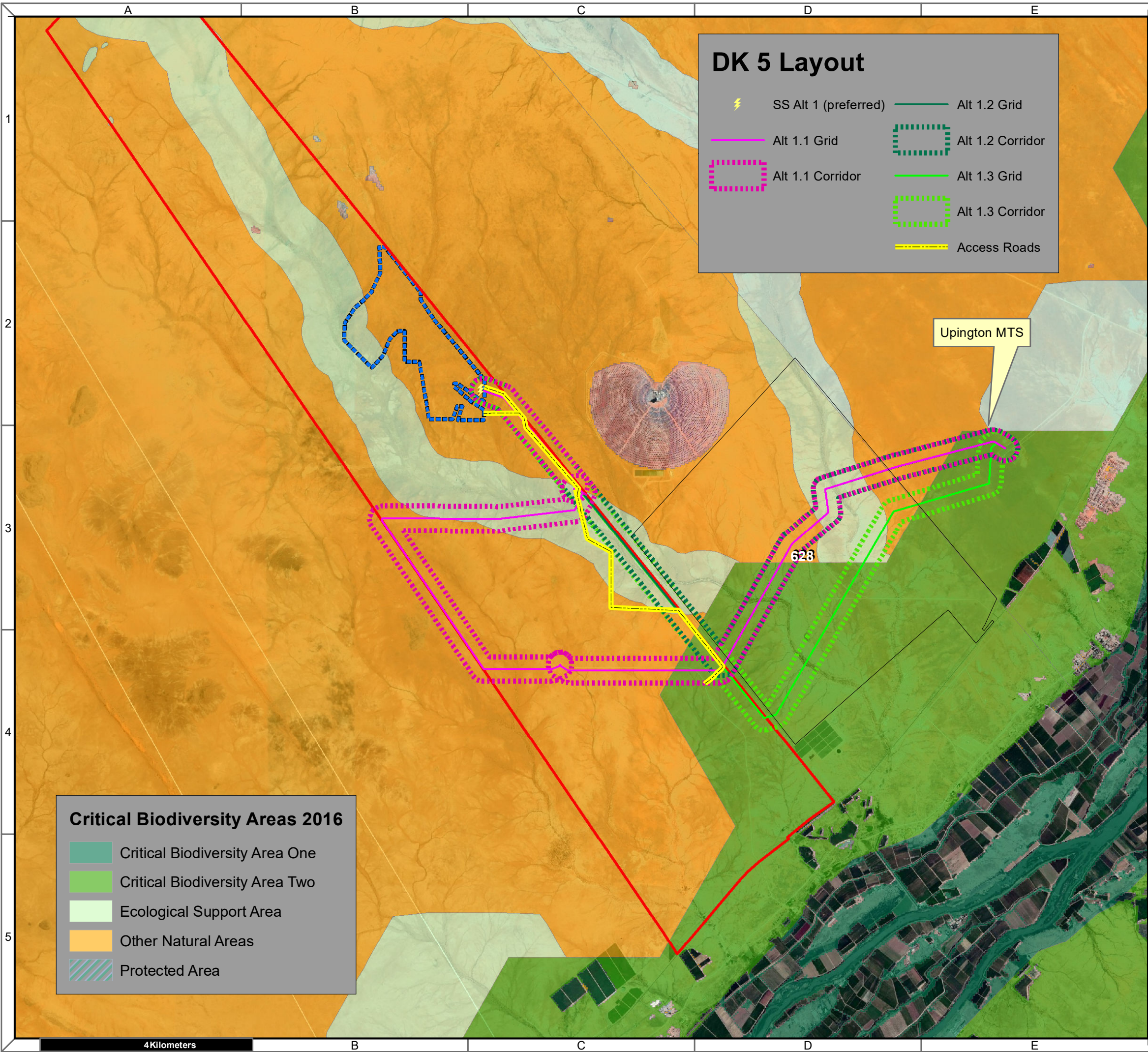
Notes

- Map Scale is 1: 70 000 when printed on A3
- Imagery date 2019
- Biodiversity data courtesy of SANBI BGIS 2019

Map Drawn By:	Date	Reference
Melissa Mackay	2020/05/25	KAI633

Cape Environmental Assessment Practitioners (Pty) Ltd
 Reg. No. 2008/004627/07
 Telephone: +27 44 874 0365
 Facsimile: +27 44 874 0432
 Web: www.cape-eaprac.co.za
 17 Progress St
 PO Box 2070
 George 6530

4Kilometers

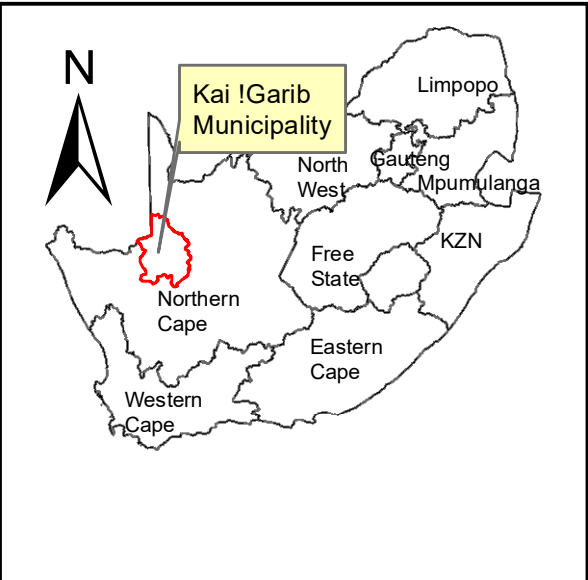


DK 5 Layout

- ⚡ SS Alt 1 (preferred)
- Alt 1.1 Grid
- Alt 1.1 Corridor
- Alt 1.2 Grid
- Alt 1.2 Corridor
- Alt 1.3 Grid
- Alt 1.3 Corridor
- Access Roads

Critical Biodiversity Areas 2016

- Critical Biodiversity Area One
- Critical Biodiversity Area Two
- Ecological Support Area
- Other Natural Areas
- Protected Area



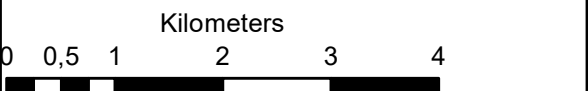
**Dyasonsklip 5 Solar PV
Farm 454 Dyasonsklip
Upington**

Legend

- Farm_454
- Access Roads
- Grid_Corridor_Properties

Notes

- Map Scale is 1: 70 000 when printed on A3
- Imagery date 2019
- Biodiversity data courtesy of SANBI BGIS 2019

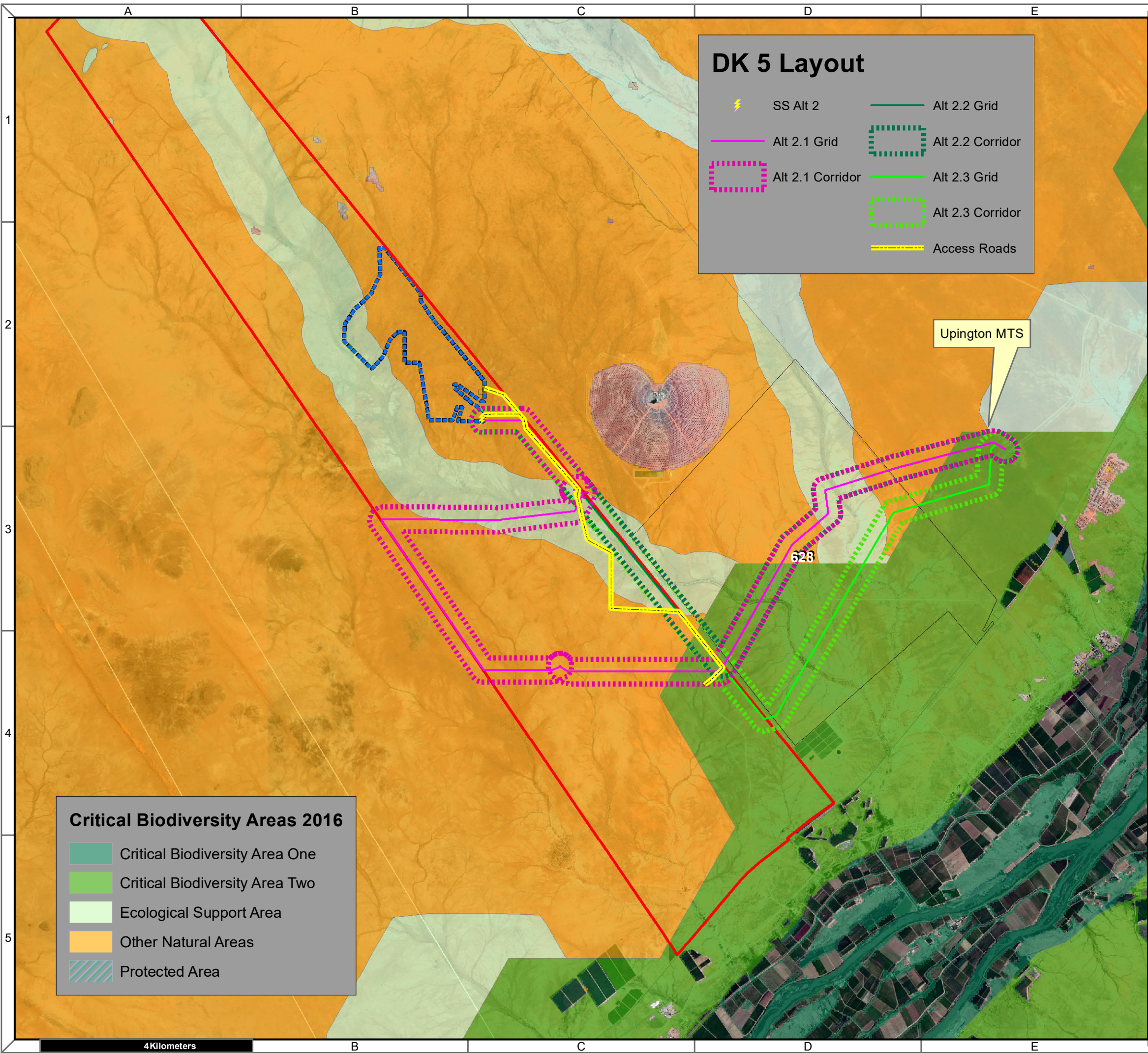


Map Drawn By:	Date	Reference
Melissa Mackay	2020/05/25	KAI633

Cape Environmental Assessment Practitioners (Pty) Ltd
 Telephone: +27 44 874 0365
 Facsimile: +27 44 874 0432
 Web: www.cape-eaprac.co.za

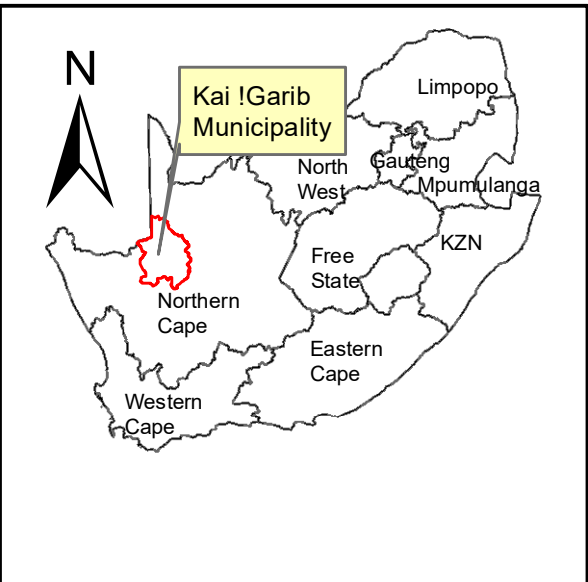
17 Progress St
 PO Box 2070
 George 6530

CRITICAL BIODIVERSITY AREAS (CBA) WITH ALT 1 GRID CONNECTIONS



DK 5 Layout

	SS Alt 2		Alt 2.2 Grid
	Alt 2.1 Grid		Alt 2.2 Corridor
	Alt 2.1 Corridor		Alt 2.3 Grid
			Alt 2.3 Corridor
			Access Roads



**Dyasonsklip 5 Solar PV
Farm 454 Dyasonsklip
Upington**

Legend

	Farm_454
	Access Roads
	Grid_Corridor_Properties

Notes

- Map Scale is 1: 70 000 when printed on A3
- Imagery date 2019
- Biodiversity data courtesy of SANBI BGIS 2019

Kilometers

Map Drawn By:	Date	Reference
Melissa Mackay	2020/05/25	KAI633

Critical Biodiversity Areas 2016

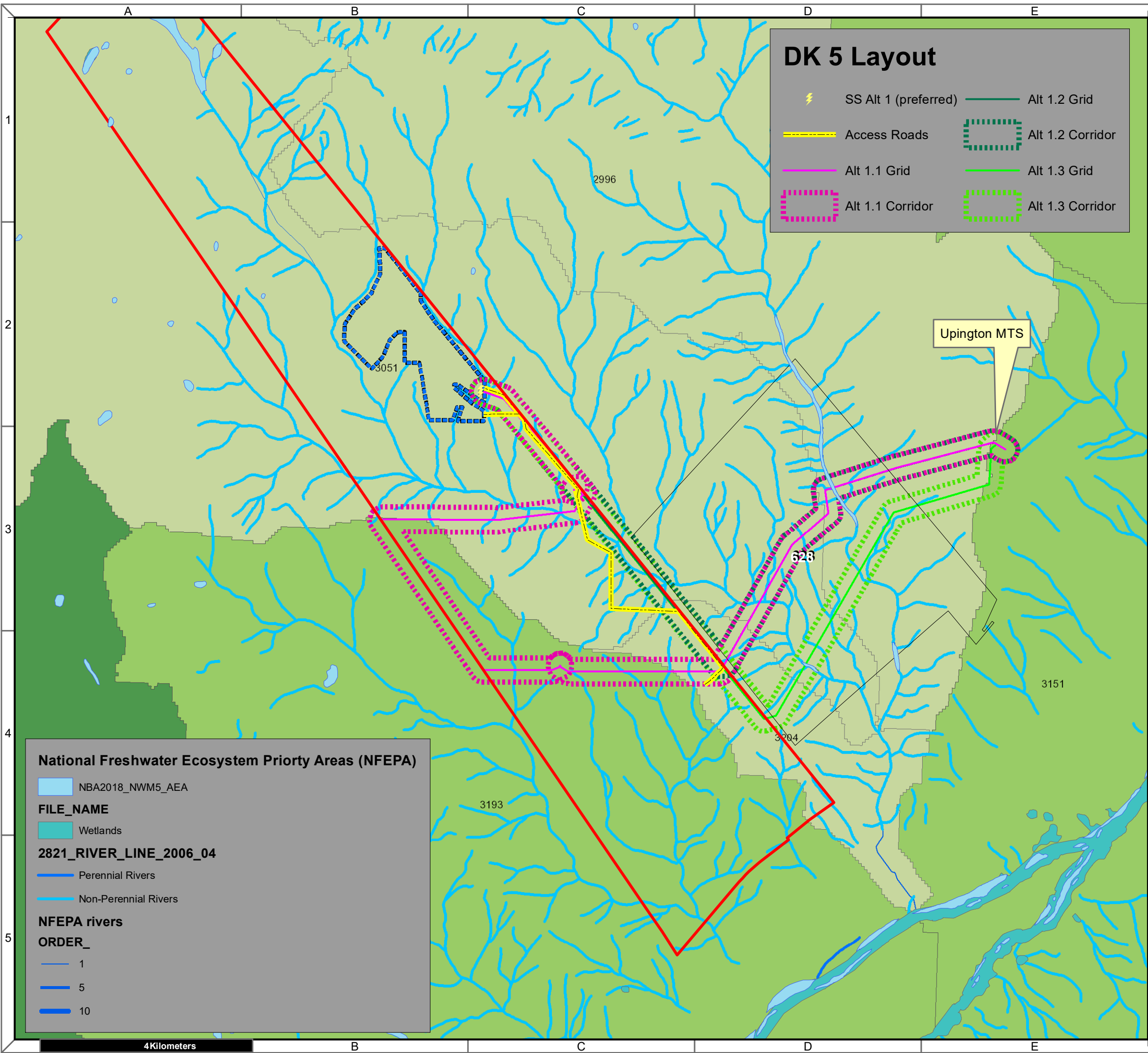
	Critical Biodiversity Area One
	Critical Biodiversity Area Two
	Ecological Support Area
	Other Natural Areas
	Protected Area

Cape Environmental Assessment Practitioners (Pty) Ltd
 Reg. No. 2008/004627/07
 Telephone: +27 44 874 0365
 Facsimile: +27 44 874 0432
 Web: www.cape-eaprac.co.za

17 Progress St
 PO Box 2070
 George 6530

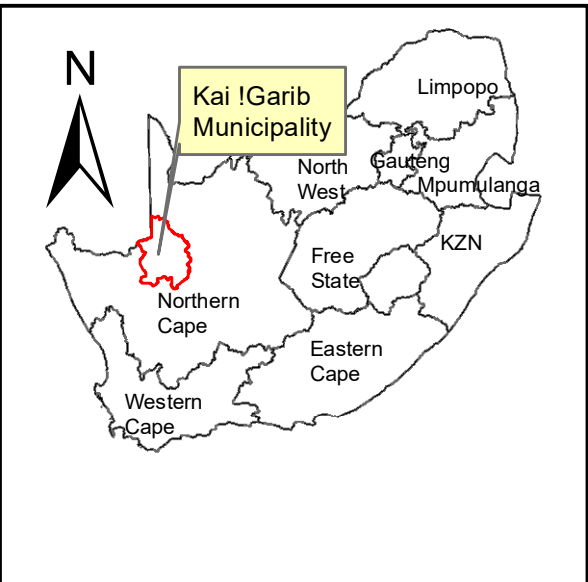
CRITICAL BIODIVERSITY AREAS (CBA) WITH ALT 2 GRID CONNECTIONS

4 Kilometers



DK 5 Layout

- ⚡ SS Alt 1 (preferred)
- Access Roads
- Alt 1.1 Grid
- Alt 1.1 Corridor
- Alt 1.2 Grid
- Alt 1.2 Corridor
- Alt 1.3 Grid
- Alt 1.3 Corridor



**Dyasonsklip 5 Solar PV
Farm 454 Dyasonsklip
Upington**

Legend

- Farm_454
- Access Roads
- Grid_Corridor_Properties
- Perennial Rivers
- Non-Perennial Rivers

National Freshwater Ecosystem Priority Areas (NFEPA)

NBA2018_NWM5_AEA

FILE_NAME

Wetlands

2821_RIVER_LINE_2006_04

- Perennial Rivers
- Non-Perennial Rivers

NFEPA rivers

ORDER_

- 1
- 5
- 10

Notes

- Map Scale is 1: 70 000 when printed on A3
- Imagery date 2019
- Biodiversity data courtesy of SANBI BGIS 2019

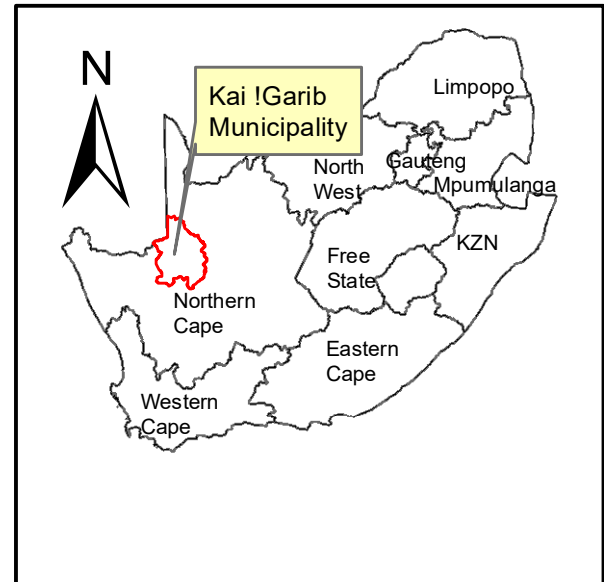
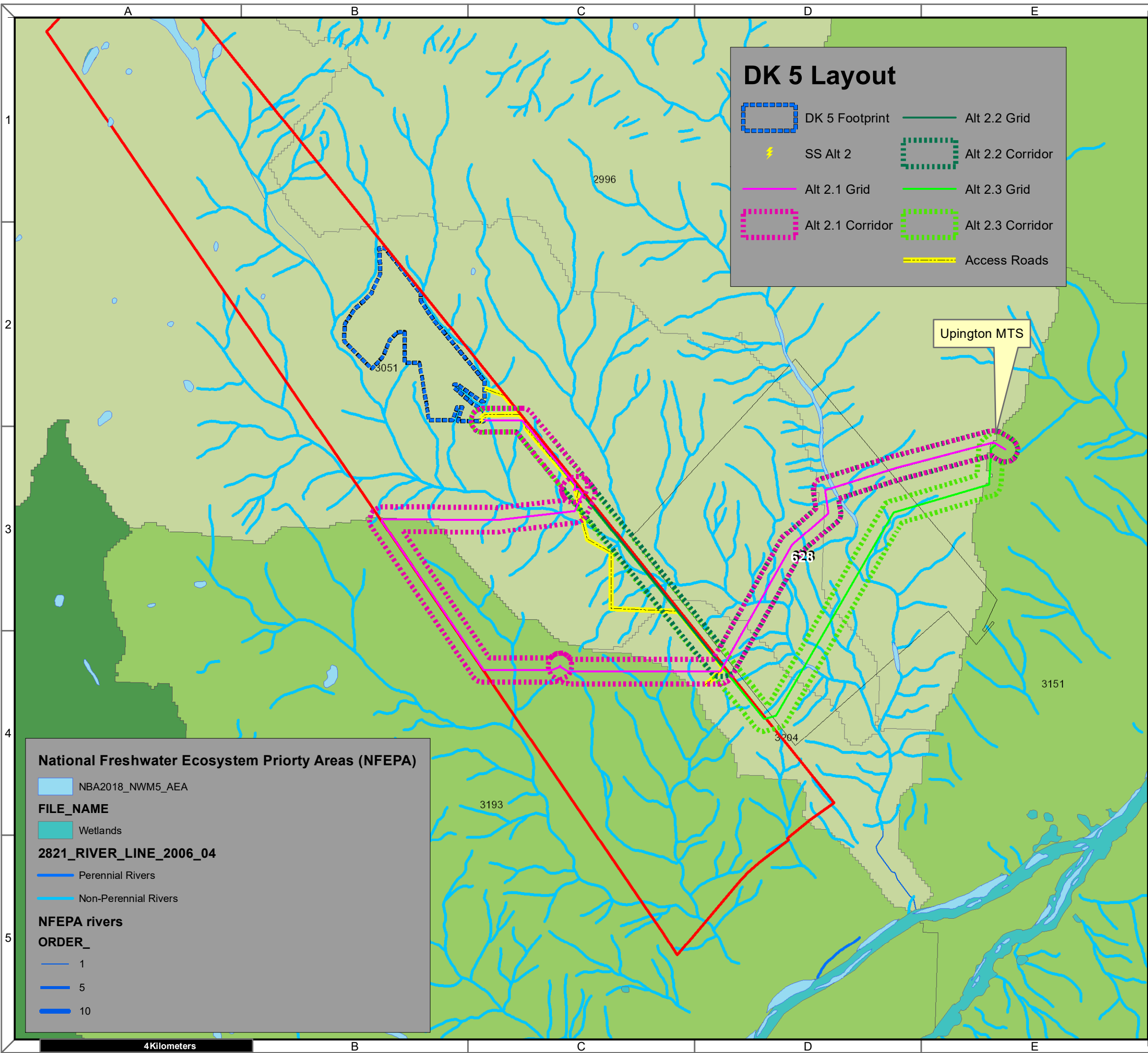
Kilometers

0 0,5 1 2 3 4

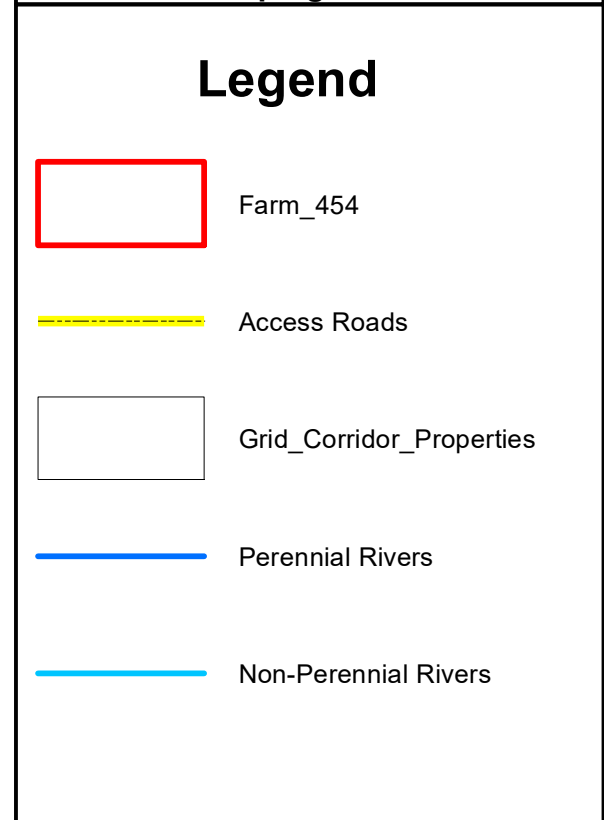
Map Drawn By:	Date	Reference
Melissa Mackay	2020/05/25	KAI633

Cape Environmental Assessment Practitioners (Pty) Ltd
 Reg. No. 2008/004627/07
 Telephone: +27 44 874 0365
 Facsimile: +27 44 874 0432
 Web: www.cape-eaprac.co.za
 17 Progress St
 PO Box 2070
 George 6530

NFEPA WITH ALT 1 GRID CONNECTIONS



Dyasonsklip 5 Solar PV Farm 454 Dyasonsklip Upington



Notes

- Map Scale is 1: 70 000 when printed on A3
- Imagery date 2019
- Biodiversity data courtesy of SANBI BGIS 2019

Kilometers

0 0,5 1 2 3 4

Map Drawn By:	Date	Reference
Melissa Mackay	2020/05/25	KAI633

Cape Environmental Assessment Practitioners (Pty) Ltd

Reg. No. 2008/004627/07

Telephone: +27 44 874 0365
 Facsimile: +27 44 874 0432
 Web: www.cape-eaprac.co.za

17 Progress St
 PO Box 2070
 George 6530