

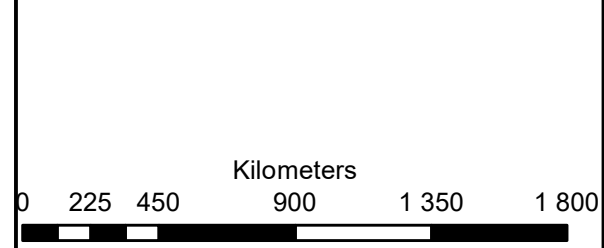
**Humansrus 4  
Farm 147 Humansrus  
Copperton**

**Legend**

- Farm 147 Humansrus
- Approved Footprint
- Proposed BESS
- Perennial River
- Non-Perennial River
- MAIN ROAD

**Notes**

- Map Scale is 1: 6 000 when printed on A3
- Aerial image courtesy of Google Earth Pro 2020
- Imagery date January 2019
- Biodiversity data courtesy of SANBI BGIS 2020 and the WCBSP 2017



Map Drawn By:	Date	Reference
Melissa Mackay	2020/10/15	SIY407

**National Freshwater Ecosystem Priority Areas (NFEPA)**

- SIY NWMS 2018
- National Wetland Management 2018

**NFEPA rivers**

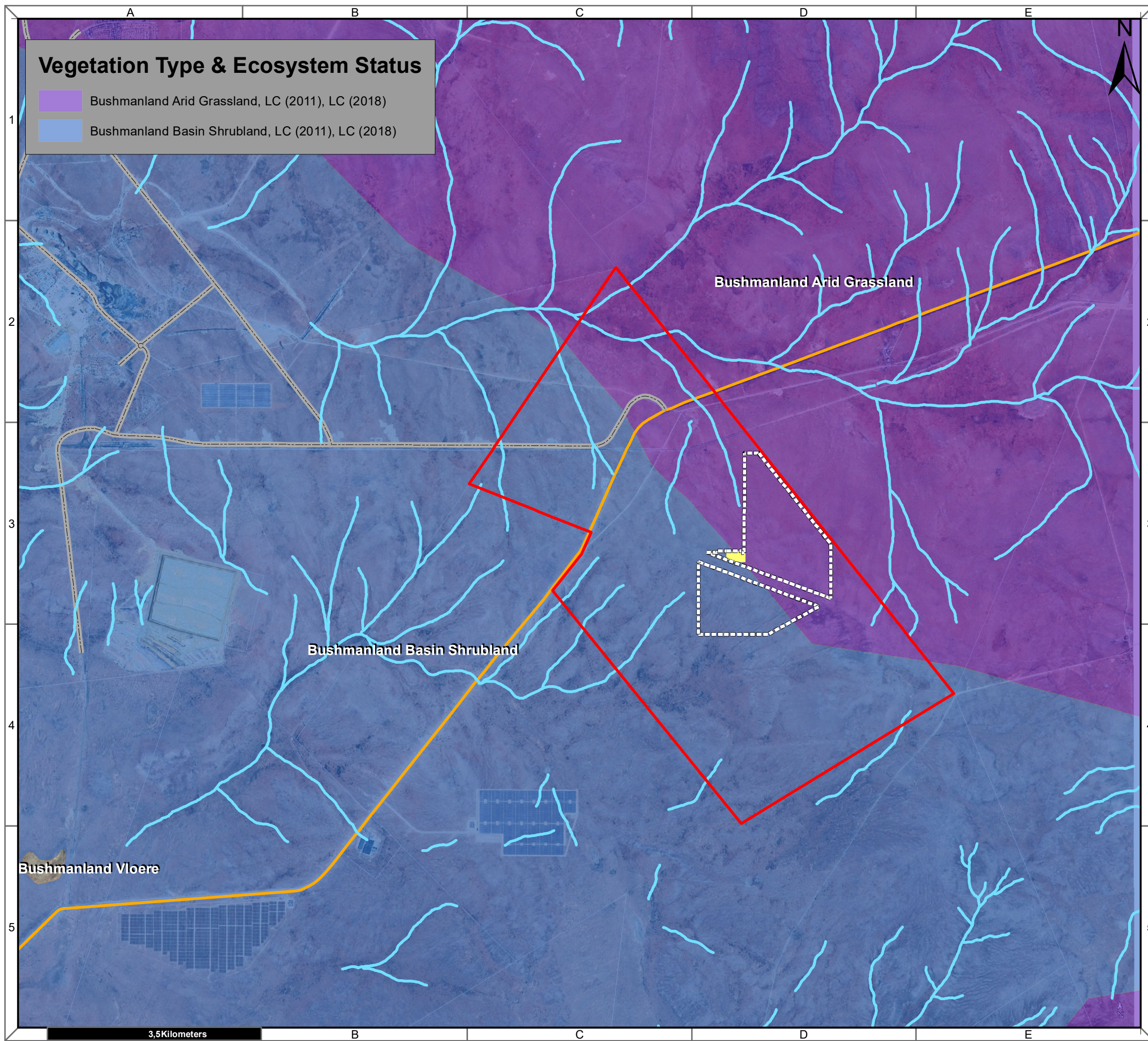
**ORDER\_**

- 1
- 5
- 10

**Cape Environmental Assessment Practitioners (Pty) Ltd**  
 Reg. No. 2008/004627/07

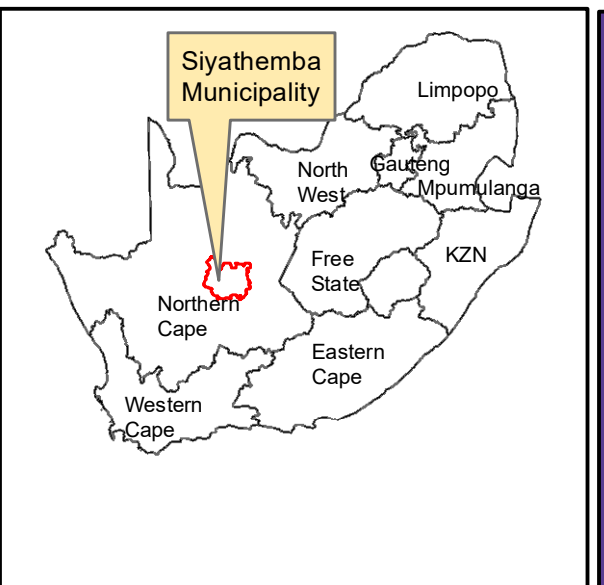
Telephone: +27 44 874 0365  
 Facsimile: +27 44 874 0432  
 Web: www.cape-eaprac.co.za

17 Progress St  
 PO Box 2070  
 George 6530



### Vegetation Type & Ecosystem Status

- Bushmanland Arid Grassland, LC (2011), LC (2018)
- Bushmanland Basin Shrubland, LC (2011), LC (2018)



## Humansrus 4 Farm 147 Humansrus Copperton

### Legend

- Farm 147 Humansrus
- Approved Footprint
- Proposed BESS
- Perennial River
- Non-Perennial River
- MAIN ROAD
- SECONDARY ROAD

### Notes

- Map Scale is 1: 60 000 when printed on A3
- Aerial image courtesy of Google Earth Pro 2020
- Imagery date December 2018
- Biodiversity data courtesy of SANBI BGIS 2020
- 2018 Threat Status Assessment (Skowno, A et al August 2019)
- LC (Least Concern), VU (Vulnerable), EN (Endangered), CR (Critically Endangered)

Kilometers

0    225    450    900    1 350    1 800

Map Drawn By:	Date	Reference
Melissa Mackay	2020/10/15	SIY407

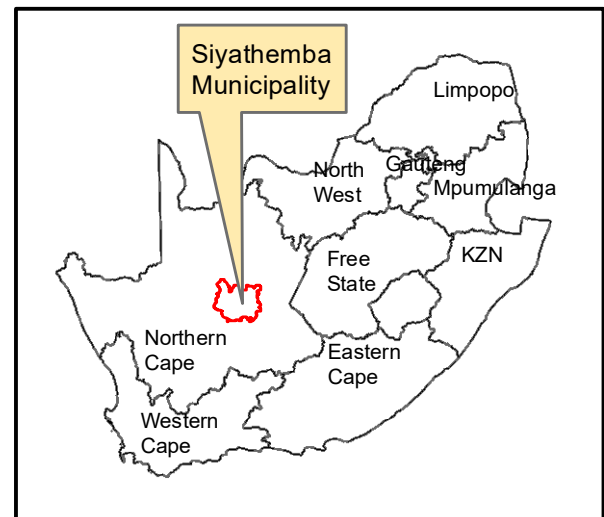
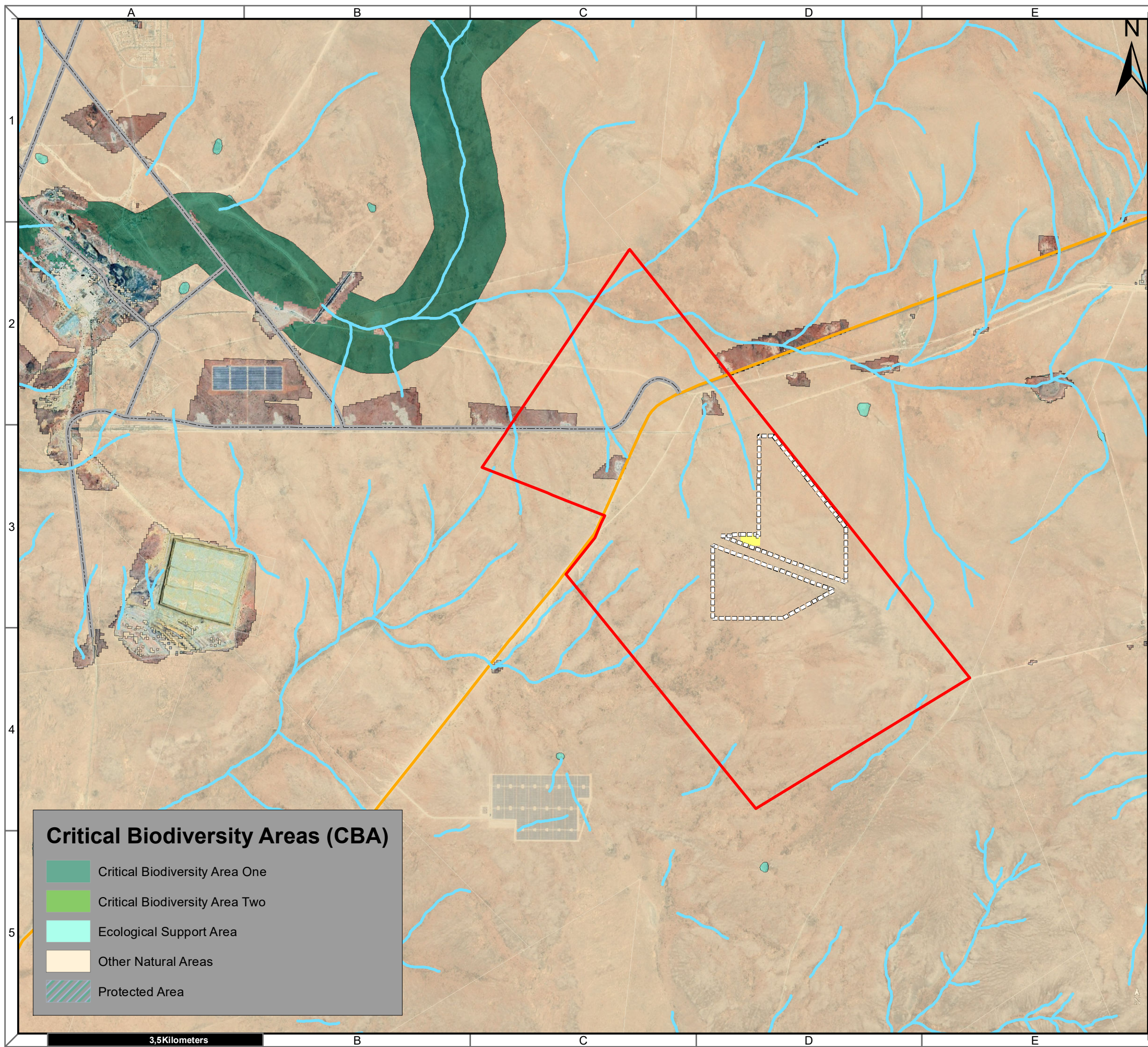
**Cape Environmental Assessment Practitioners (Pty) Ltd**  
 Reg. No. 2008/004627/07

Telephone: +27 44 874 0365  
 Facsimile: +27 44 874 0432  
 Web: www.cape-eaprac.co.za

17 Progress St  
 PO Box 2070  
 George 6530

**VEGETATION TYPE & ECOSYSTEM STATUS**

3,5 Kilometers



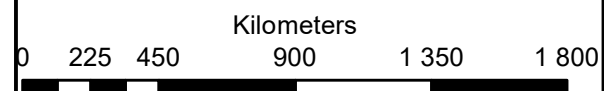
**Humansrus 4  
Farm 147 Humansrus  
Copperton**

**Legend**

- Farm 147 Humansrus
- Approved Footprint
- Proposed BESS
- Perennial River
- Non-Perennial River
- MAIN ROAD
- SECONDARY ROAD

**Notes**

- Map Scale is 1: 60 000 when printed on A3
- Aerial image courtesy of Google Earth Pro 2020
- Imagery date December 2018
- Biodiversity data courtesy of SANBI BGIS 2020



Map Drawn By:	Date	Reference
Melissa Mackay	2020/10/15	SIY407

**Cape Environmental Assessment Practitioners (Pty) Ltd**  
 Reg. No. 2008/004627/07  
 Telephone: +27 44 874 0365  
 Facsimile: +27 44 874 0432  
 Web: www.cape-eaprac.co.za  
 17 Progress St  
 PO Box 2070  
 George 6530

**CRITICAL BIODIVERSITY AREAS**

**Critical Biodiversity Areas (CBA)**

- Critical Biodiversity Area One
- Critical Biodiversity Area Two
- Ecological Support Area
- Other Natural Areas
- Protected Area

3,5 Kilometers