

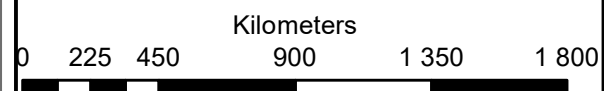
**Postmasburg Solar PV Energy Facility2  
Remaining Extent of Farm 436**

**Legend**

- Remaining\_Extent\_Farm\_436
- BESS
- Approved Footprint
- Perennial River
- Non Perennial River
- OTHER ACCESS

**Notes**

- Map Scale is 1: 22 000 when printed on A3
- Aerial image courtesy of Google Earth Pro 2020
- Imagery date March 2019
- Biodiversity data courtesy of SANBI BGIS 2020
- 2018 Threat Status Assessment (Skowno, A et al August 2019)
- LC (Least Concern), VU (Vulnerable), EN (Endangered), CR (Critically Endangered)

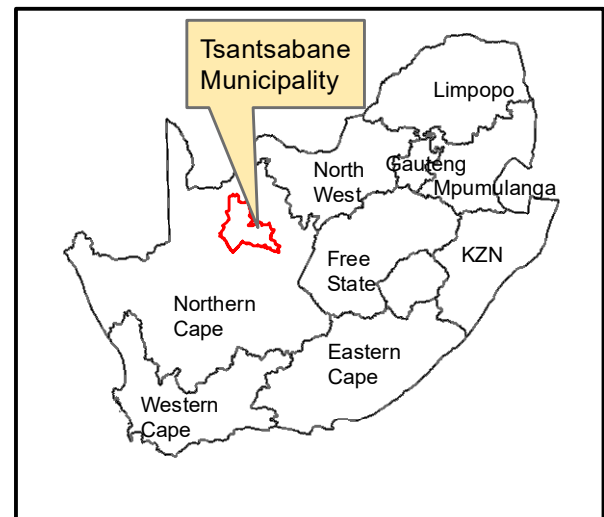
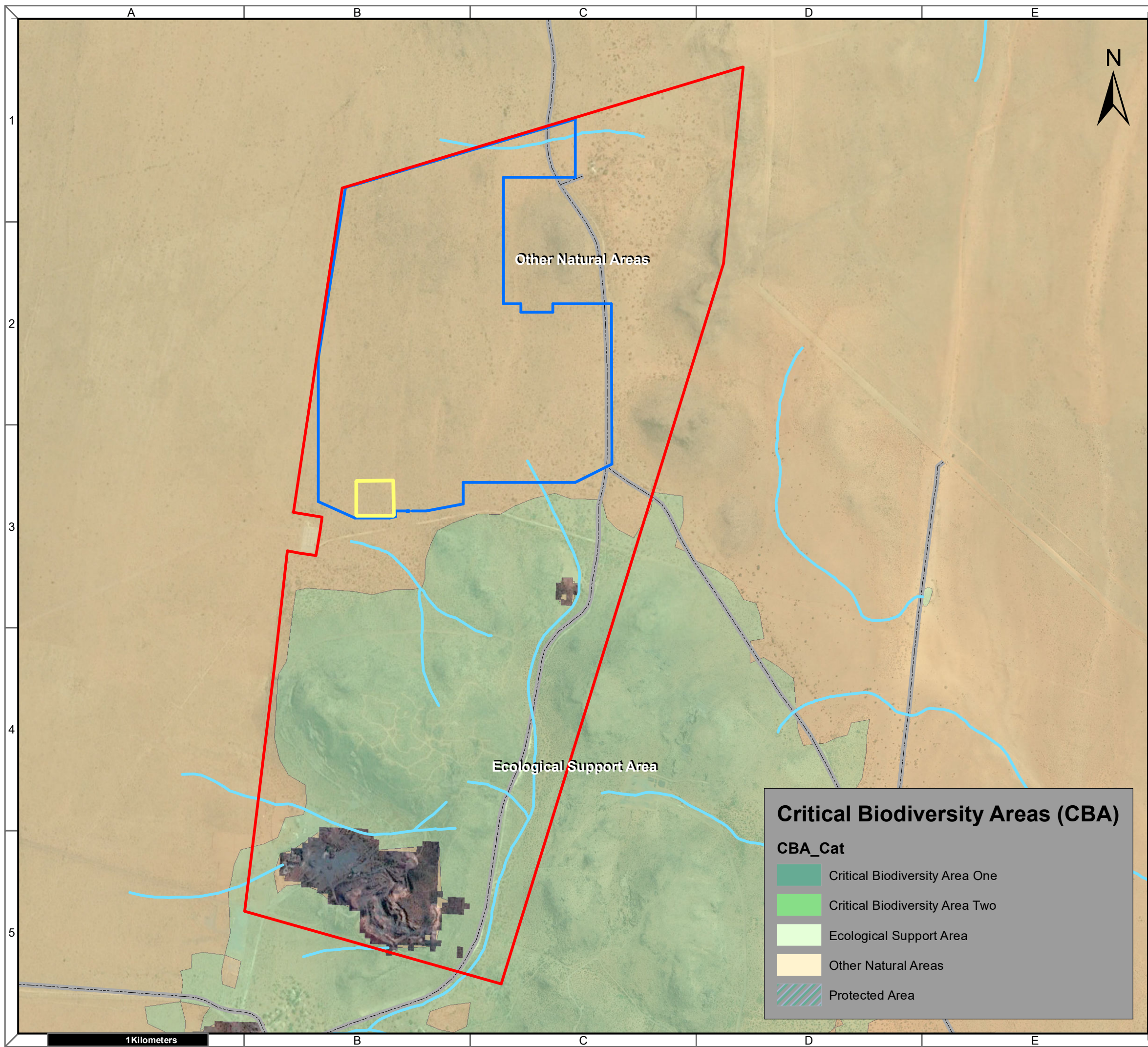


Map Drawn By:	Date	Reference
Melissa Mackay	2020/09/22	TSA309

**Vegetation Type & Ecosystem Status**

- Kuruman Mountain Bushveld, LC (2011), LC (2018)
- Kuruman Thornveld, LC (2011), LC (2018)

**Cape Environmental Assessment Practitioners (Pty) Ltd**  
 Reg. No. 2008/004627/07  
 Telephone: +27 44 874 0365  
 Facsimile: +27 44 874 0432  
 Web: www.cape-eaprac.co.za  
 17 Progress St  
 PO Box 2070  
 George 6530



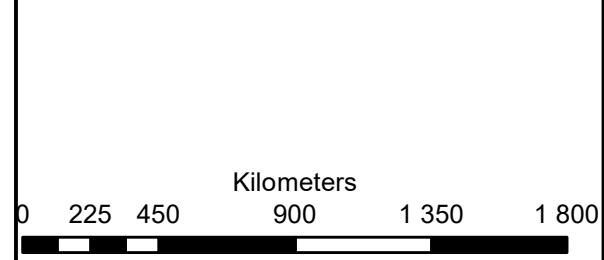
**Postmasburg Solar PV Energy Facility2  
Remaining Extent of Farm 436**

**Legend**

- Remaining\_Extent\_Farm\_436
- BESS
- Approved Footprint
- Perennial River
- Non Perennial River
- OTHER ACCESS

**Notes**

- Map Scale is 1: 23 000 when printed on A3
- Aerial image courtesy of Google Earth Pro 2020
- Imagery date March 2019
- Biodiversity data courtesy of SANBI BGIS 2020

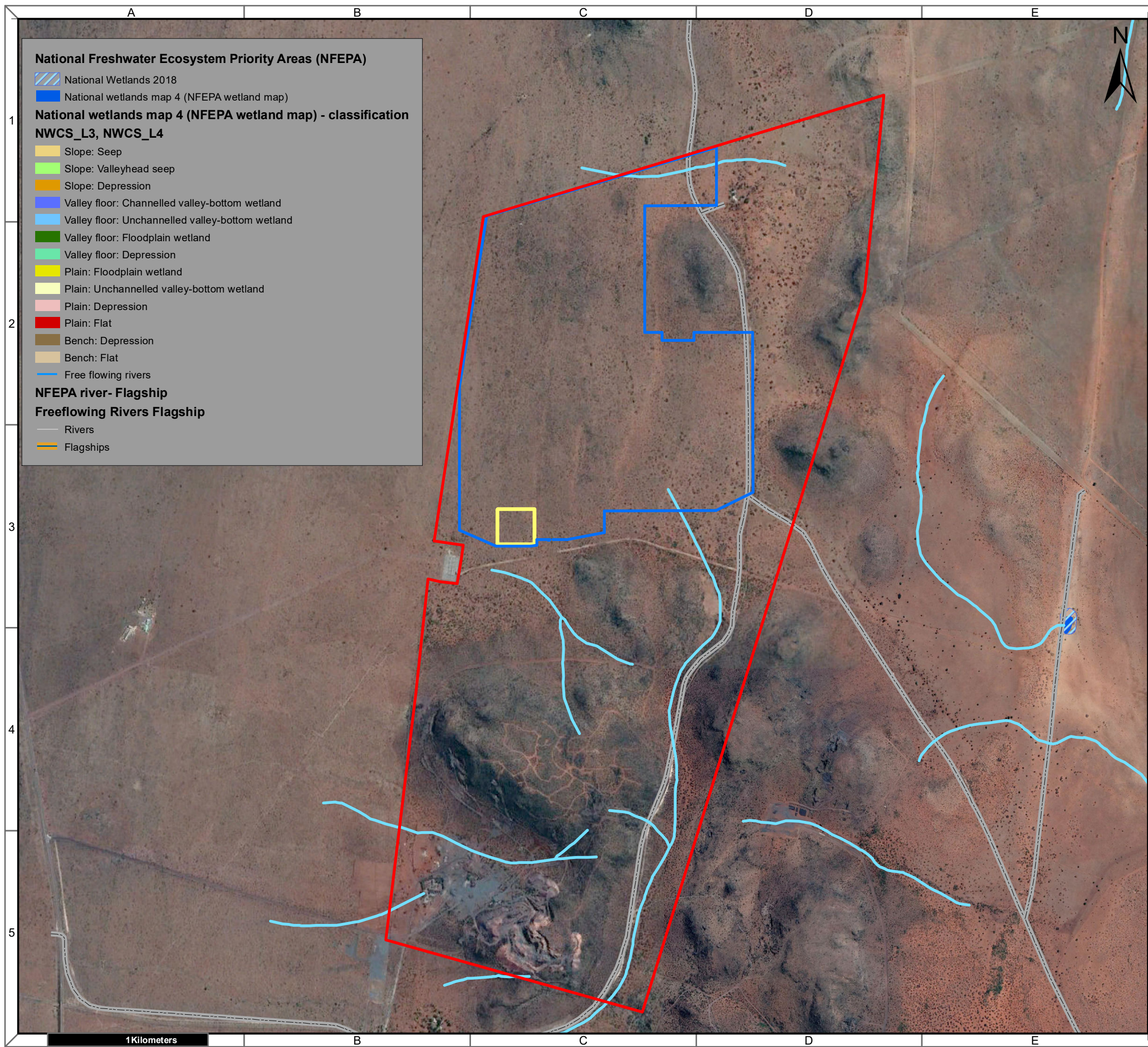


Map Drawn By:	Date	Reference
Melissa Mackay	2020/09/22	TSA309

**Critical Biodiversity Areas (CBA)**

**CBA\_Cat**

- Critical Biodiversity Area One
- Critical Biodiversity Area Two
- Ecological Support Area
- Other Natural Areas
- Protected Area



**National Freshwater Ecosystem Priority Areas (NFEPA)**

- National Wetlands 2018
- National wetlands map 4 (NFEPA wetland map)

**National wetlands map 4 (NFEPA wetland map) - classification**

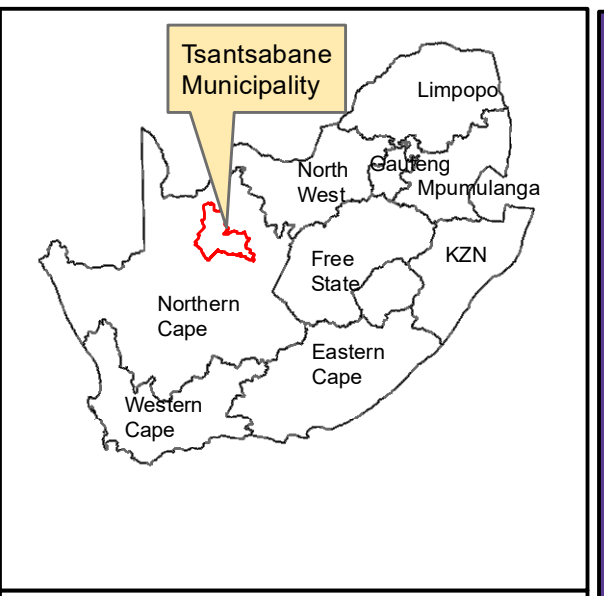
**NWCS\_L3, NWCS\_L4**

- Slope: Seep
- Slope: Valleyhead seep
- Slope: Depression
- Valley floor: Channelled valley-bottom wetland
- Valley floor: Unchannelled valley-bottom wetland
- Valley floor: Floodplain wetland
- Valley floor: Depression
- Plain: Floodplain wetland
- Plain: Unchannelled valley-bottom wetland
- Plain: Depression
- Plain: Flat
- Bench: Depression
- Bench: Flat
- Free flowing rivers

**NFEPA river- Flagship**

**Freeflowing Rivers Flagship**

- Rivers
- Flagships



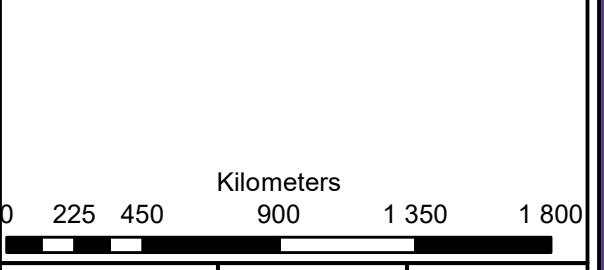
**Postmasburg Solar PV Energy Facility2**  
**Remaining Extent of Farm 436**

**Legend**

- Remaining\_Extent\_Farm\_436
- Approved Footprint
- BESS
- Perennial River
- Non Perennial River
- OTHER ACCESS

**Notes**

- Map Scale is 1: 23 000 when printed on A3
- Aerial image courtesy of Google Earth Pro 2020
- Imagery date March 2019
- Biodiversity data courtesy of SANBI BGIS 2020



Map Drawn By:	Date	Reference
Melissa Mackay	2020/09/22	TSA309

**Cape Environmental Assessment Practitioners (Pty) Ltd**  
 Telephone: +27 44 874 0365  
 Facsimile: +27 44 874 0432  
 Web: www.cape-eaprac.co.za

17 Progress St  
 PO Box 2070  
 George 6530

**NATIONAL FRESHWATER ECOSYSTEM PRIORITY AREAS (NFEPA)**