

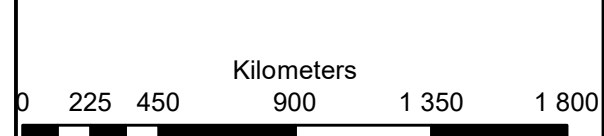
**Euphorbia PV
Houthaalboomen North
Portions 2, 3 & 4 of Farm 31
Lichtenburg**

Legend

- Portion_2_of_Farm_31
- Portion_3_of_Farm_31
- Portion_4_of_Farm_31
- Access Roads
- Euphorbia PV
- MAIN ROAD
- OTHER ACCESS
- Perennial Rivers
- Non-Perennial Rivers

Notes

- Map Scale is 1: 40 000 when printed on A3
- Aerial image courtesy of Google Earth Pro 2021
- Imagery date April 2021
- Biodiversity data courtesy of SANBI BGIS 2020
- North West CBA 2015 dataset



Map Drawn By:	Date	Reference
Melissa Mackay	2022/03/02	DIT724

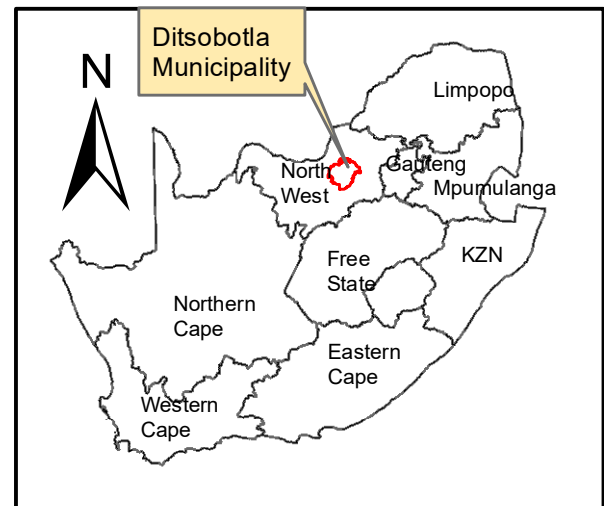
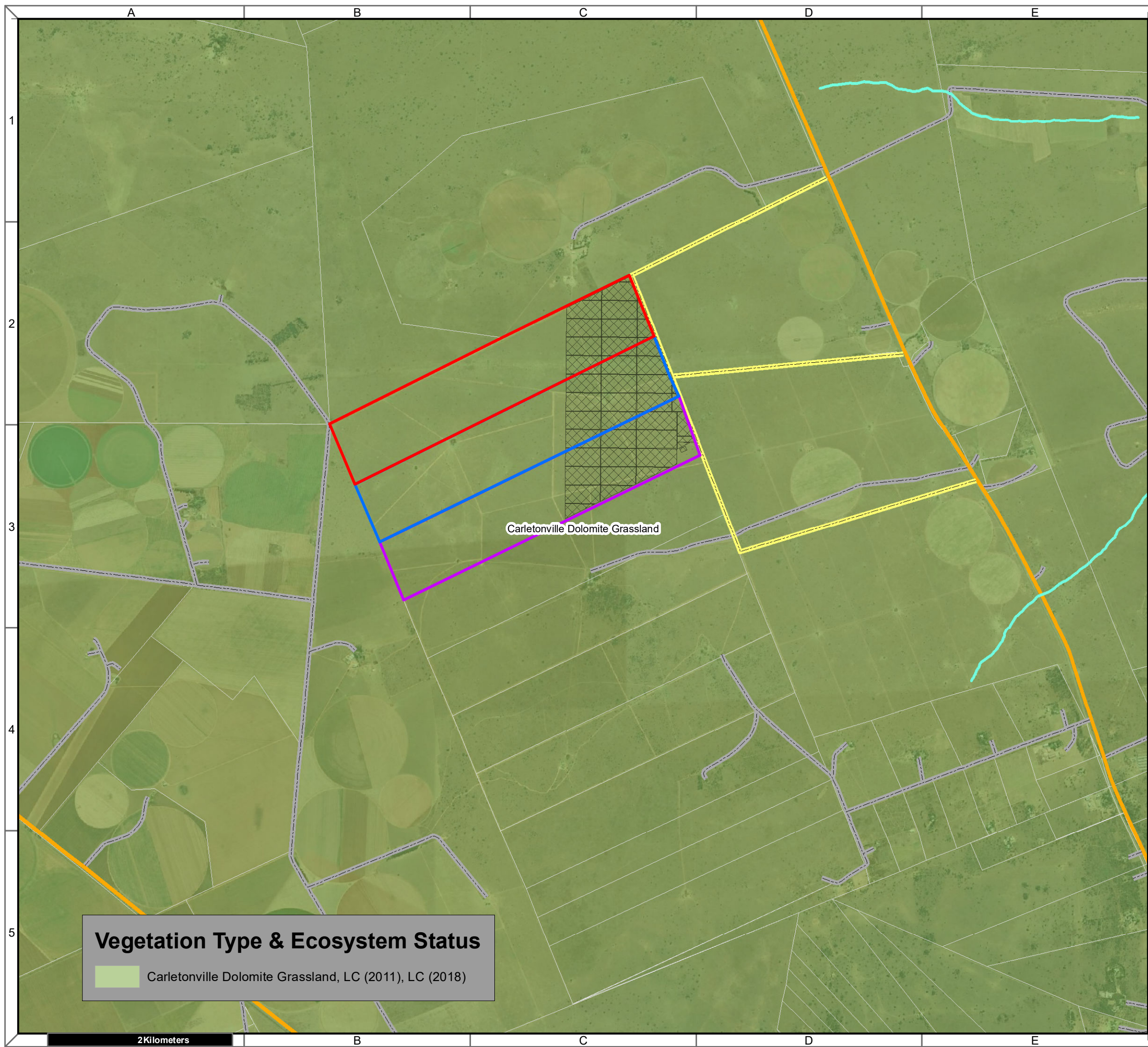
Cape Environmental Assessment Practitioners (Pty) Ltd
 Reg. No. 2008/004627/07
 Telephone: +27 44 874 0365
 Facsimile: +27 44 874 0432
 Web: www.cape-eaprac.co.za
 17 Progress St
 PO Box 2070
 George 6530

CRITICAL BIODIVERSITY AREAS

Critical Biodiversity Areas (CBA)

Aquatic CBA	Terrestrial CBA
 CBA1	 CBA1
 CBA2	 CBA2
 ESA1	 ESA1
 ESA2	 ESA2

2Kilometers



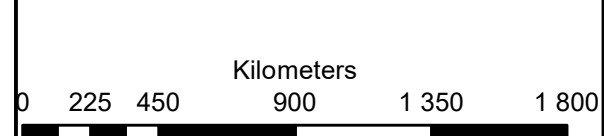
**Euphorbia PV
Houthaalboomen North
Portions 2, 3 & 4 of Farm 31
Lichtenburg**

Legend

- Portion_2_of_Farm_31
- Portion_3_of_Farm_31
- Portion_4_of_Farm_31
- Access Roads
- Euphorbia PV
- Perennial Rivers
- Non-Perennial Rivers
- MAIN ROAD
- OTHER ACCESS

Notes

- Map Scale is 1: 40 000 when printed on A3
- Aerial image courtesy of Google Earth Pro 2021
- Imagery date May 2021
- Biodiversity data courtesy of SANBI BGIS 2020
- 2018 Threat Status Assessment (Skowno, A et al August 2019)
- LC (Least Concern), VU (Vulnerable), EN (Endangered), CR (Critically Endangered)

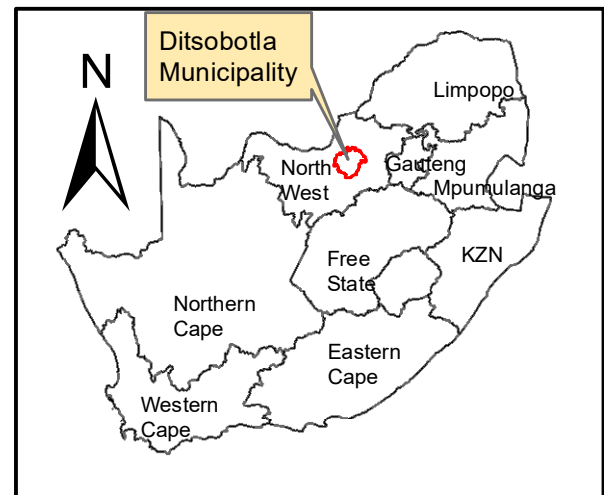
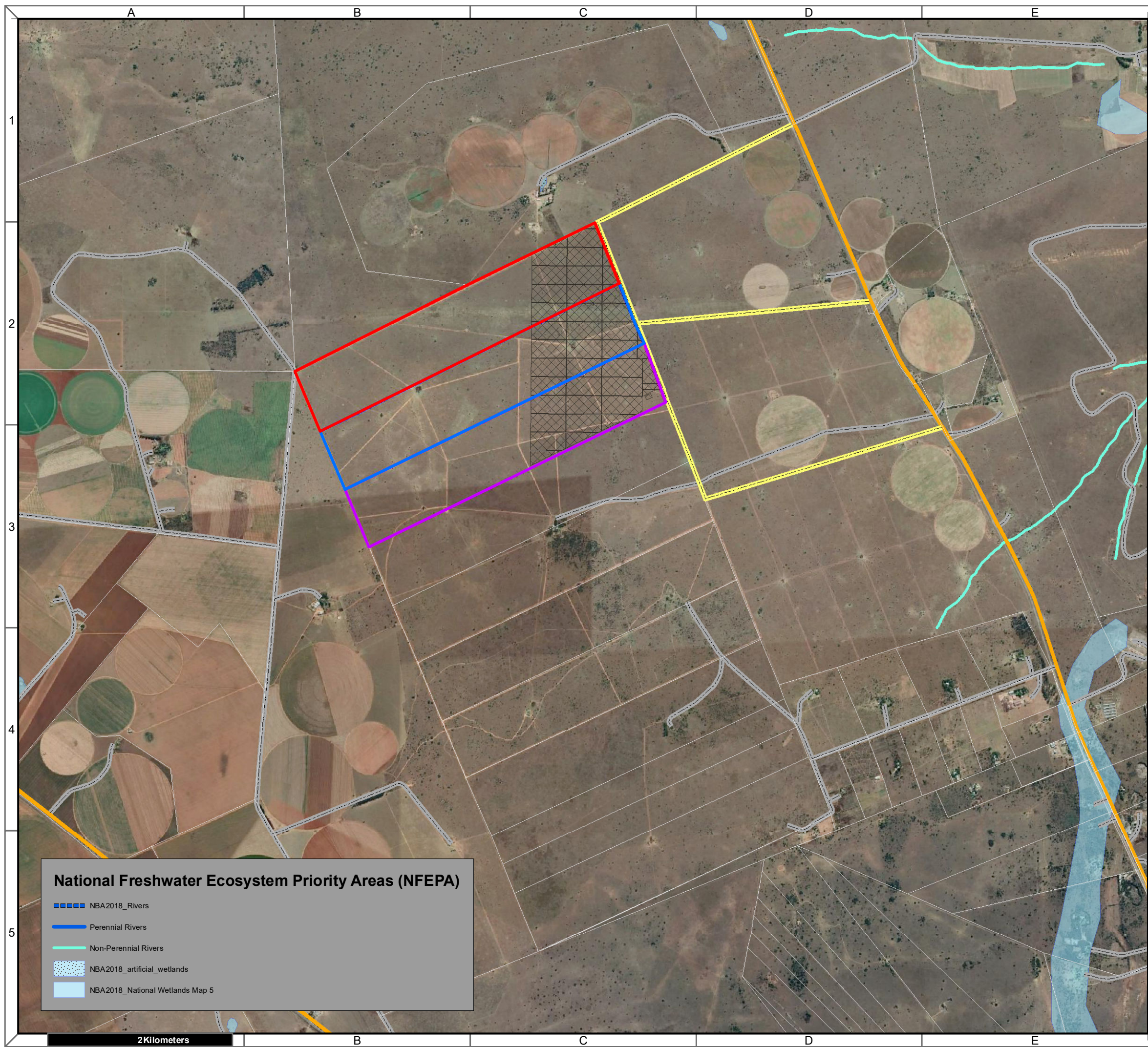


Vegetation Type & Ecosystem Status

- Carletonville Dolomite Grassland, LC (2011), LC (2018)

Map Drawn By:	Date	Reference
Melissa Mackay	2022/03/02	DIT724

Cape Environmental Assessment Practitioners (Pty) Ltd
 Reg. No. 2008/004627/07
 Telephone: +27 44 874 0365
 Facsimile: +27 44 874 0432
 Web: www.cape-eaprac.co.za
 17 Progress St
 PO Box 2070
 George 6530



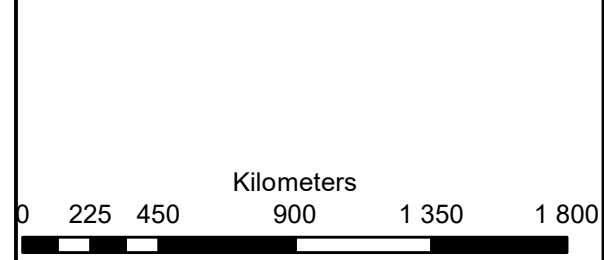
**Euphorbia PV
Houthaalboomen North
Portions 2, 3 & 4 of Farm 31
Lichtenburg**

Legend

- Portion_2_of_Farm_31
- Portion_3_of_Farm_31
- Portion_4_of_Farm_31
- Access Roads
- Euphorbia PV
- MAIN ROAD
- OTHER ACCESS

Notes

- Map Scale is 1: 40 000 when printed on A3
- Aerial image courtesy of Google Earth Pro 2022
- Imagery date May 2021
- Biodiversity data courtesy of SANBI BGIS 2020



Map Drawn By:	Date	Reference
Melissa Mackay	2022/03/02	DIT724

National Freshwater Ecosystem Priority Areas (NFEPA)

- NBA2018_Rivers
- Perennial Rivers
- Non-Perennial Rivers
- NBA2018_artificial_wetlands
- NBA2018_National Wetlands Map 5

Cape Environmental Assessment Practitioners (Pty) Ltd
 Reg. No. 2008/004627/07
 Telephone: +27 44 874 0365
 Facsimile: +27 44 874 0432
 Web: www.cape-eaprac.co.za
 17 Progress St
 PO Box 2070
 George 6530

NATIONAL FRESHWATER ECOSYSTEM PRIORITY AREAS (NFEPA)