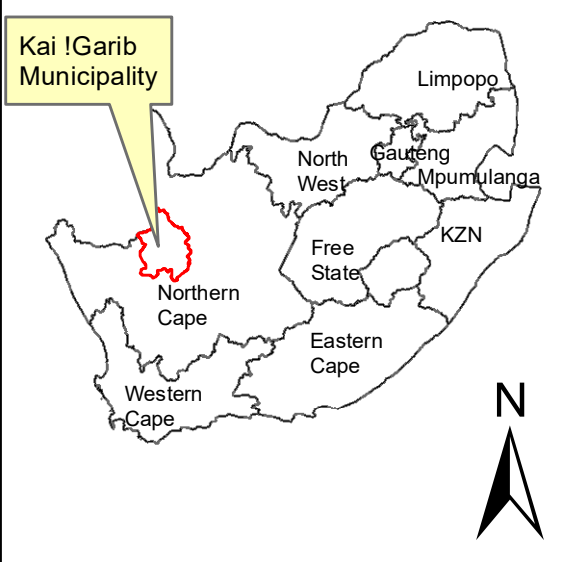


**Vegetation Type. Ecosystem Status**

- Bushmanland Arid Grassland, LC (2011), LC (2018)
- Gordonia Duneveld, LC (2011), LC (2018)
- Kalahari Karroid Shrubland, LC (2011), LC (2018)
- Lower Gariep Alluvial Vegetation, EN (2011), LC (2018)
- Lower Gariep Broken Veld, LC (2011), LC (2018)



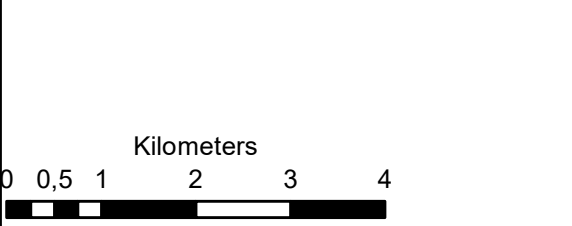
**Grid Connection  
Farm 456 Geelkop**

**Legend**

- Farm\_456
- 300m Grid Preferred Alternative
- Facility Footprint
- Corridor\_properties

**Notes**

- Map Scale is 1: 80 000 when printed on A3
- Imagery date 2009
- Biodiversity data courtesy of SANBI BGIS 2020 - 2018 Threat Status Assessment (Skowno, A et al August 2019)
- LC (Least Concern), VU (Vulnerable), EN (Endangered), CR (Critically Endangered)

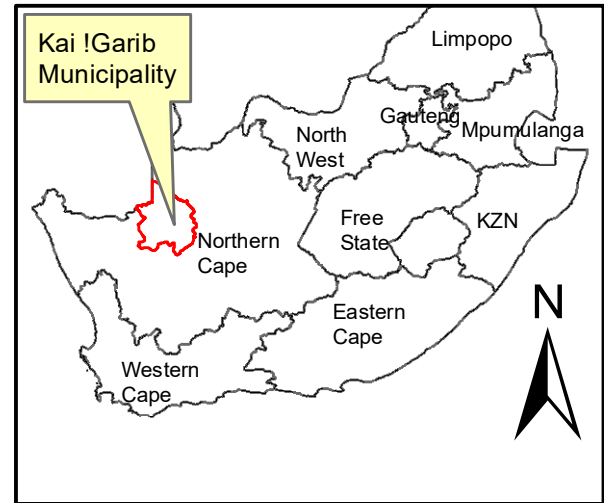
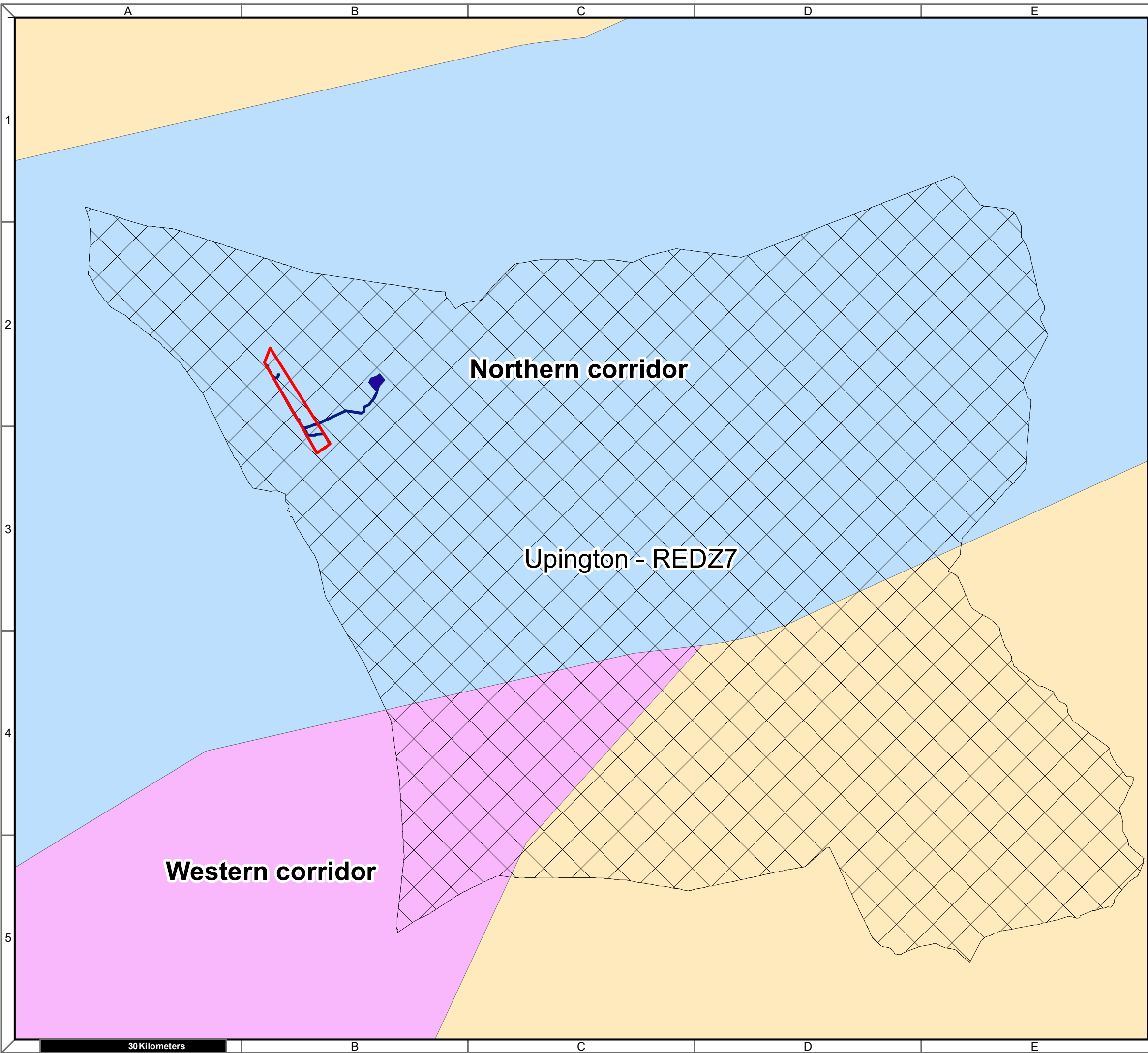


Map Drawn By:	Date	Reference
Melissa Mackay	2020/12/08	KAI632

**Cape Environmental Assessment Practitioners (Pty) Ltd**  
 Reg. No. 2008/004627/07  
 Telephone: +27 44 874 0365  
 Facsimile: +27 44 874 0432  
 Web: www.cape-eaprac.co.za  
 17 Progress St  
 PO Box 2070  
 George 6530

**VEGETATION TYPE & ECOSYSTEM STATUS**





**Grid Connection  
Farm 456 Geelkop**

**Legend**

- Farm\_456
- 300m Grid Preferred Alternative

**REDZ**

- Upington - REDZ7

**Power\_corridors**

**Corridor**

- Northern corridor
- Western corridor

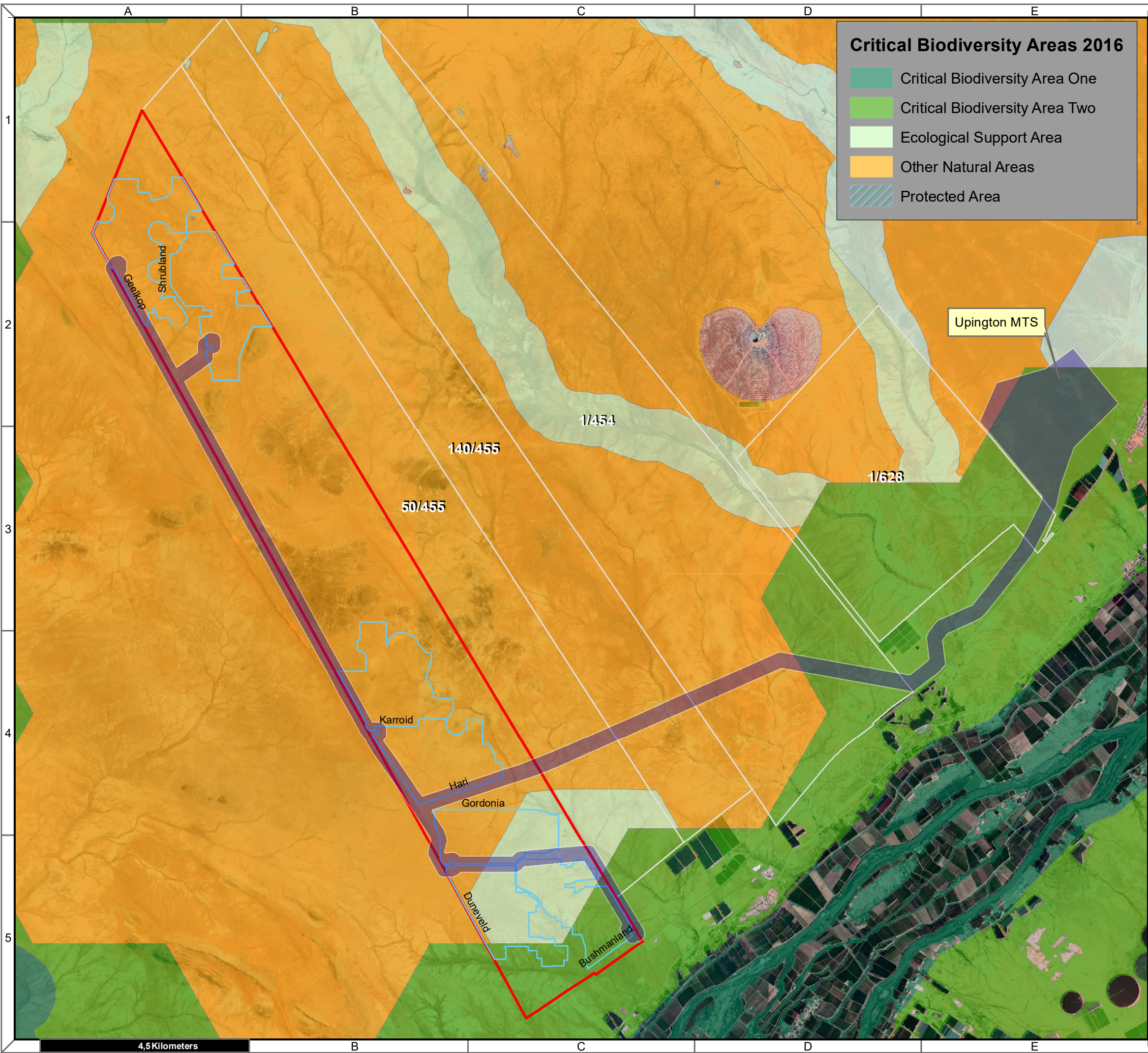
**Notes**

- Map Scale is 1: 600 000 when printed on A3
- REDZ data as per DEA unpublished 2015

Kilometers

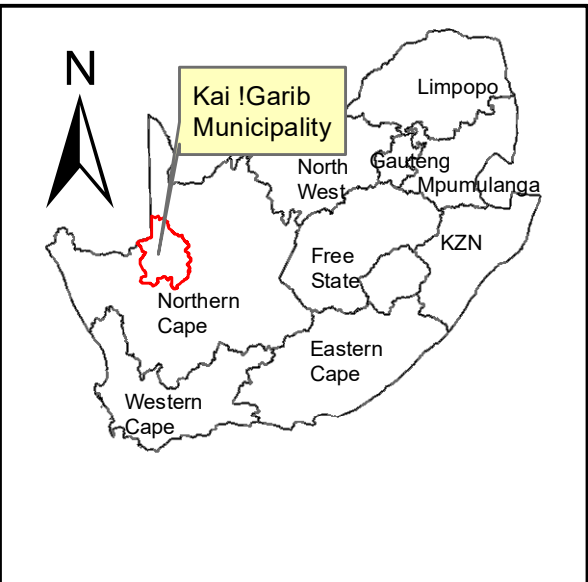
Map Drawn By:	Date	Reference
Melissa Mackay	2020/11/25	KAI582





**Critical Biodiversity Areas 2016**

- Critical Biodiversity Area One
- Critical Biodiversity Area Two
- Ecological Support Area
- Other Natural Areas
- Protected Area



**Grid Connection  
Farm 456 Geelkop**

**Legend**

- Farm\_456
- 300m Grid Preferred Alternative
- Facility Footprint
- Corridor\_properties

**Notes**

- Map Scale is 1: 80 000 when printed on A3
- Imagery date 2009
- Biodiversity data courtesy of SANBI BGIS 2019



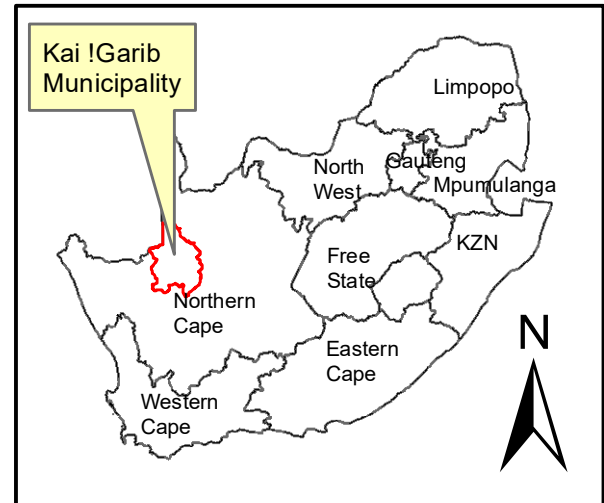
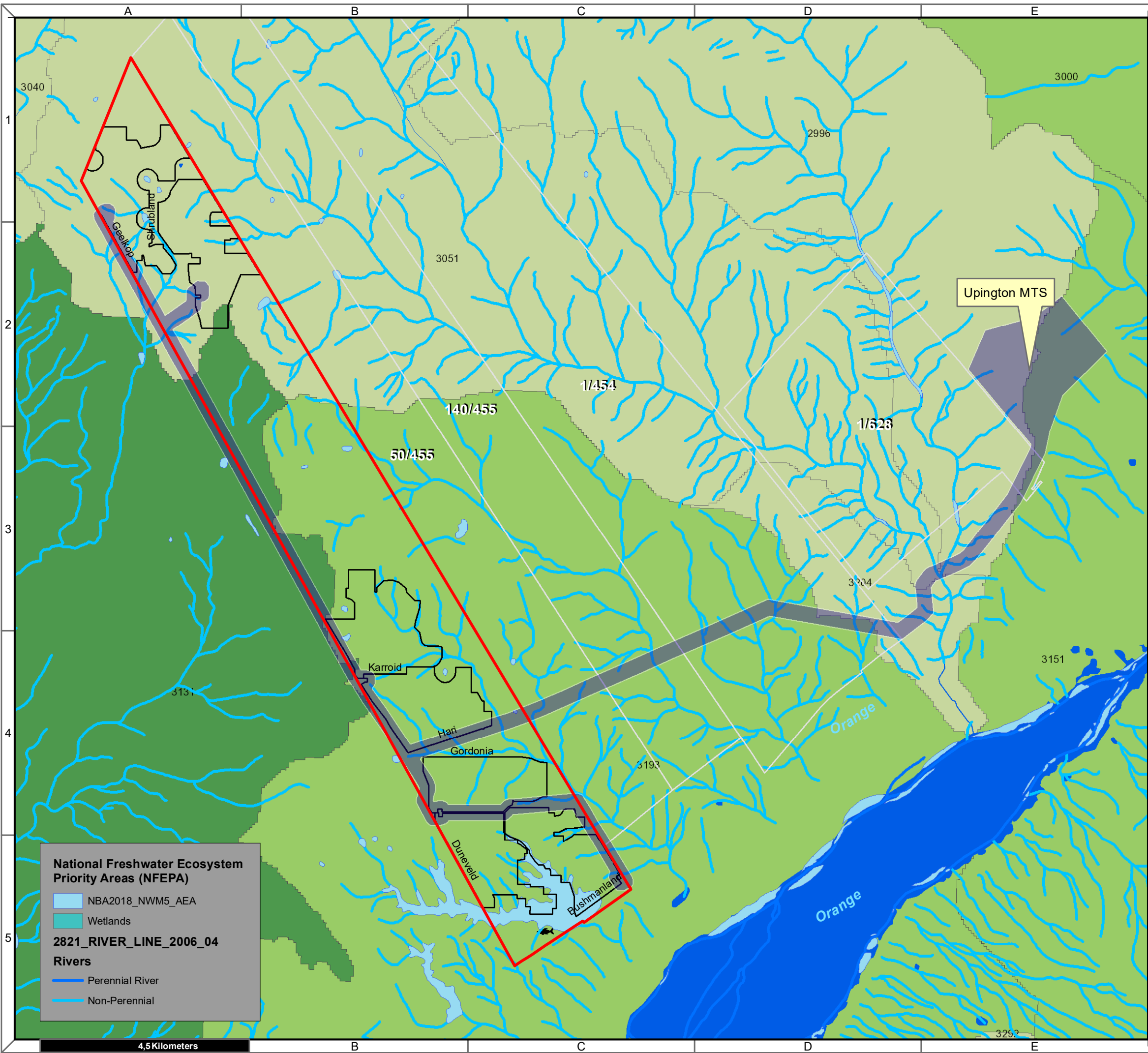
Map Drawn By:	Date	Reference
Melissa Mackay	2020/11/25	KAI632

**Cape Environmental Assessment Practitioners (Pty) Ltd**  
 Reg. No. 2008/004627/07  
 Telephone: +27 44 874 0365  
 Facsimile: +27 44 874 0432  
 Web: www.cape-eaprac.co.za  
 17 Progress St  
 PO Box 2070  
 George 6530

**CRITICAL BIODIVERSITY AREAS (CBA)**

4,5 Kilometers





**Grid Connection  
Farm 456 Geelkop**

**Legend**

- Farm\_456
- 300m Grid Preferred Alternative
- Facility Footprint
- Corridor\_properties

**Notes**

- Map Scale is 1: 80 000 when printed on A3
- Imagery date 2009
- Biodiversity data courtesy of SANBI BGIS 2019

Kilometers

Map Drawn By:	Date	Reference
Melissa Mackay	2020/11/25	KAI632

**Cape Environmental Assessment Practitioners (Pty) Ltd**  
 Reg. No. 2008/004627/07  
 Telephone: +27 44 874 0365  
 Facsimile: +27 44 874 0432  
 Web: www.cape-eaprac.co.za

17 Progress St  
 PO Box 2070  
 George 6530

**National Freshwater Ecosystem Priority Areas (NFEPA)**

- NBA2018\_NWM5\_AEA
- Wetlands

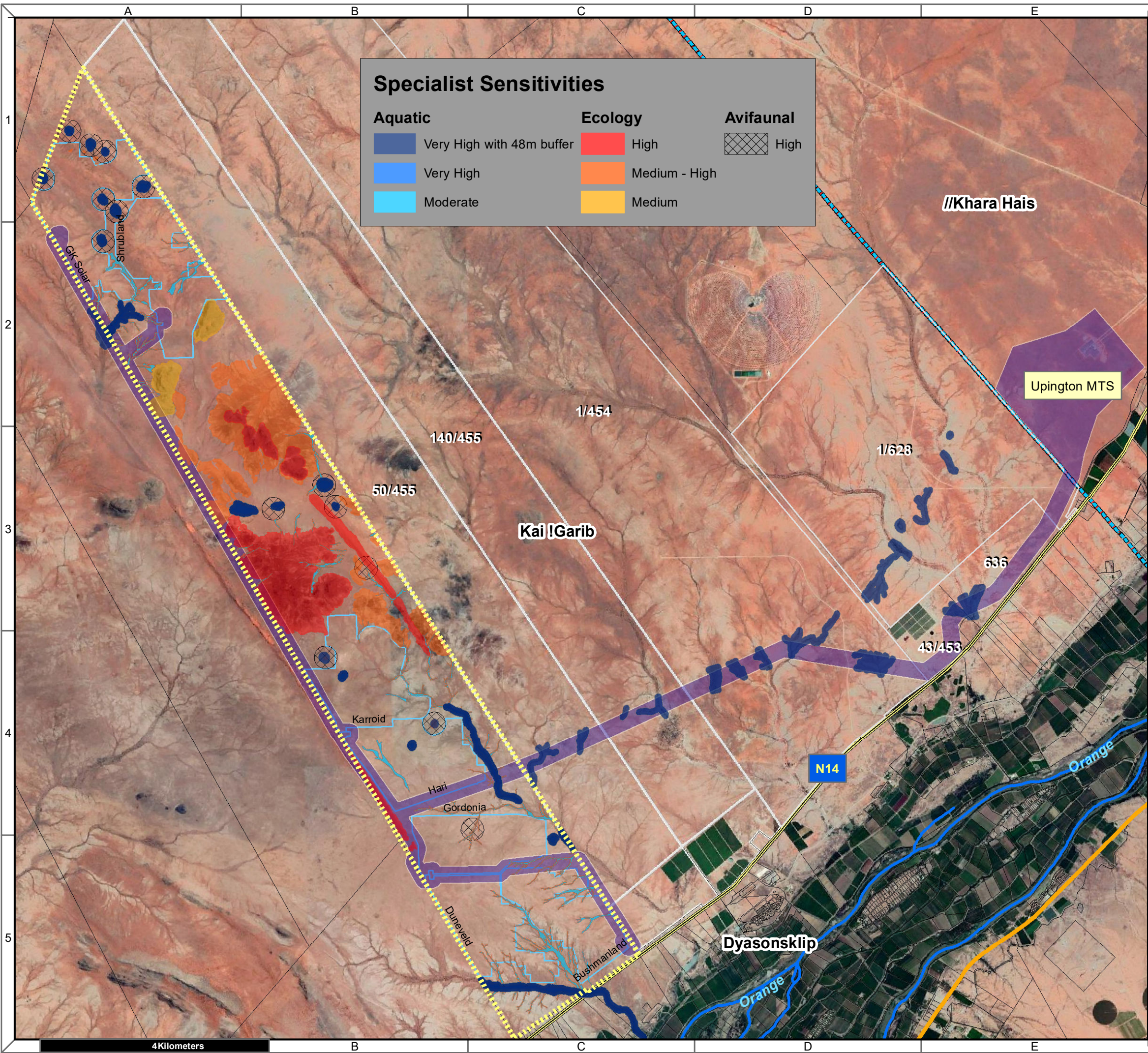
**2821\_RIVER\_LINE\_2006\_04**

**Rivers**

- Perennial River
- Non-Perennial

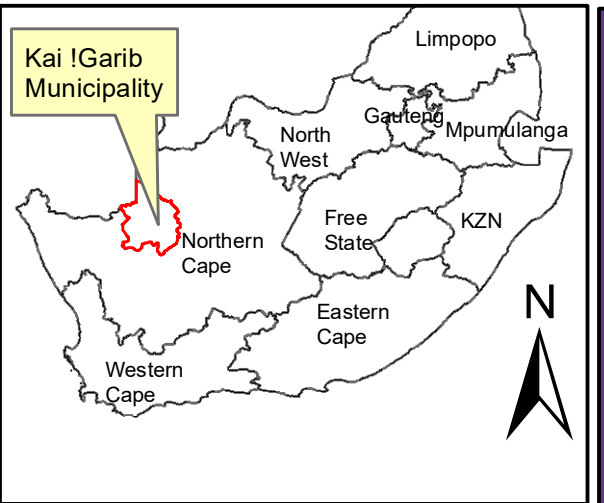
4,5 Kilometers





### Specialist Sensitivities

Aquatic	Ecology	Avifaunal
Very High with 48m buffer	High	High
Very High	Medium - High	
Moderate	Medium	



**Grid Connection  
Farm 456 Geelkop**

### Legend

- Farm\_456
- 300m Grid Preferred Alternative
- Facility Footprint
- ARTERIAL ROUTE
- MAIN ROAD
- NATIONAL ROUTE
- Perennial River

### Notes

- Map Scale is 1: 65 000 when printed on A3
- Aerial image courtesy of Google Earth Pro 2020
- Imagery date December 2018
- Sensitivity layers provided by specialists

Kilometers

Map Drawn By:	Date	Reference
Melissa Mackay	2020/12/08	KAI632

**Cape Environmental Assessment Practitioners (Pty) Ltd**  
 Telephone: +27 44 874 0365  
 Facsimile: +27 44 874 0432  
 Web: www.cape-eaprac.co.za

17 Progress St  
 PO Box 2070  
 George 6530

**SITE SENSITIVITY**